

Acts Cyrene Apartments

Dear Oakland Housing Authority:

We are also pleased to announce our latest affordable housing community – ***Acts Cyrene Apartments***.

We are reaching out to interested parties in the community to announce an affordable housing opportunity that will be of interest to your clients/constituents. Beginning on Friday, July 21st, 2017, the application acceptance period opens and will close on Saturday August 11th, 2017. Specific income and occupancy requirements are attached to this notice.

These brand new units will be available for occupancy approximately sometime in September 2017. The newly built community is being developed by Related California in partnership with Acts Community Development Corporation, the Oakland Housing Authority and the City of Oakland.

Acts Cyrene Apartments at 9400 International Blvd., Oakland, CA 94603



Nearest Cross Streets: 94th Avenue / International Blvd., Oakland, CA

Acts Cyrene Apartments will feature 59 brand new one, two and three bedroom apartment homes. Rents will vary by Low Income Housing Tax Credit (LIHTC) income levels. Maximum income limits do apply up to 50% of the area median income. Rents for Section 8 Project-Based units will be about 30% of adjusted household income.

Some of the fantastic Acts Cyrene Apartments amenities include:

Elevator Access
On-Site Service Coordinator
Computer Learning Center
Professional On-Site Staff

Spacious Floor plans
On-Site Laundry Facilities
Picnic Area with BBQs
Close to Public Transportation

Some Fully Accessible Units
Community and Lounge Rooms
Controlled Access Parking
Tot Lot / Children's Play Area

PLEASE SEE THE REVERSE SIDE FOR SOME TYPICAL FLOOR PLANS:

Acts Cyrene Apartments

MAXIMUM LIHTC GROSS ANNUAL INCOME LIMITS:

Effective 4/17/2017

NUMBER OF PERSONS	MAX INCOME LIMIT
1	\$36,550
2	\$41,750
3	\$46,950
4	\$52,150
5	\$56,350
6	\$60,500
7	\$64,700

Individual Rents will be based upon Low Income Housing Tax Credit Rent Limits, except for 14 units that will have Project Based Section 8 Rental Assistance where rents are based upon household income.

Due to the limited number of apartments, the filing of an application in no way guarantees you an apartment.

NOW ACCEPTING APPLICATIONS FOR Acts Cyrene Apartments

9400 International Blvd., Oakland, CA 94603

We are pleased to announce that we will begin accepting applications for Acts Cyrene Apartments on July 21st, 2017. The open application period will run from July 21st, 2017 to August 11th, 2017. You may submit an application electronically by visiting us at www.LiveAtActsCyrene.com. Printed applications can be obtained from our website or our leasing office must be mailed to the address below and postmarked no later than August 11th, 2017 or turned in Monday thru Friday between 9:00 am to 6:00 pm at 885 69th Avenue Suite #102 Oakland, CA 94621 by August 11th, 2017.

COMPLETED APPLICATIONS may be mailed to **Acts Cyrene Apartments PO Box 6099, Oakland, CA 94603**, turned in Monday thru Friday between 9:00 am to 6:00 pm at Acts Cyrene Leasing Office 885 69th Avenue Suite #102 Oakland, CA 94621 OR completed on-line at www.LiveAtActsCyrene.com.

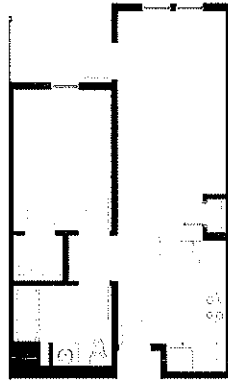
Applications will be ranked by lottery; this is not a first come, first serve process. **To be included in the lottery your application must be received by August 11th, 2017. Mailed applications must be postmarked by August 11th, 2017.**

Applicants to Acts Cyrene Apartments that are living in Oakland, working in Oakland, a member of the military or former member of the military, or being displaced from their housing in Oakland will receive a priority preference. Additionally, there are 14 units that have a preference for those that are currently homeless.

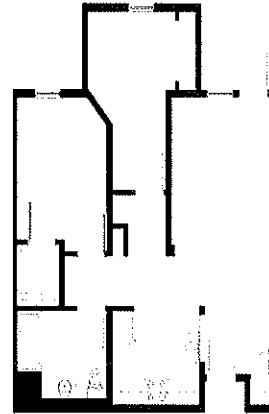
There will be an applicant workshop on Saturday July 22nd, 2017 from 10:00 am to 3:00 pm at the Radisson Hotel at 8400 Edes Avenue Oakland, CA 94621 for those seeking help filling out an application.



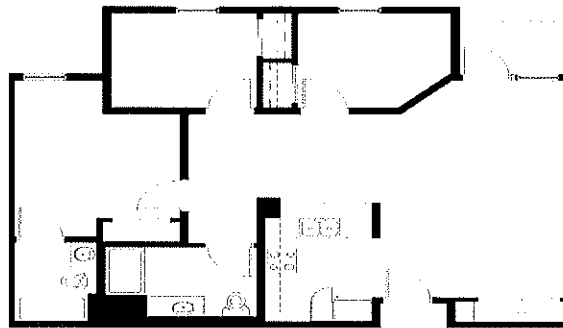
Acts Cyrene Apartments



1 BEDROOM/1 BATH - 624 SQ. FT.



2 BEDROOM/1 BATH - 865 SQ. FT.



3 BEDROOM/2 BATH - 1144 SQ. FT.

LIHTC OCCUPANCY STANDARDS ARE AS FOLLOWS:

BEDROOM SIZE	MIN # OF PEOPLE	MAX # OF PEOPLE
1	1	2
2	2	4
3	3	6

PBV OCCUPANCY STANDARDS ARE AS FOLLOWS:

BEDROOM SIZE	MIN # OF PEOPLE	MAX # OF PEOPLE
1	1	3
2	2	5
3	4	7