



# ELEVATE AWARENESS

**Easy Access Autism Screening**

No Costs. No Appointments. Just Answers.



Made possible by a  
generous grant from



**Community  
Foundation**  
for Southern Arizona





WE'RE  
HERE TO  
EMPOWER  
PARENTS

---





# EASY ACCESS AUTISM SCREENING PROGRAM

Southwest Autism Research & Resource Center (SARRC) is bringing parents the Easy Access Autism Screening program, making it easier than ever to either have their child's developmental delay concerns validated or to put their minds at ease.

## **No Costs. No Appointments. Just Answers.**

Before this project, the only opportunity for parents to discuss their concerns about their child was on their well-visit to their pediatrician. We still encourage parents to share concerns with their medical provider, but now they have another option: they can call SARRC.


Now, screening is as easy as making a phone call. There's no more commitment than that, and thanks to generous funding from the Southern Arizona Community Foundation, there is no cost to families.

Parents can speak to an experienced staff member who will rely on a standardized valid procedure to determine if they should seek a formal autism evaluation.

## **This procedure may have several advantages for the family.**

- *Early intervention is key when it comes to autism.*
- *A critical advantage of this new project is that families no longer have to wait for their next pediatrician visit to discuss what could be timely developmental concerns.*
- *The time spent on the phone with our staff will be focused on evaluating your concerns and guiding them through their results and next steps.*



A woman with blonde hair tied back, wearing a white lab coat, is holding a young child. They are both looking down and to the right, with their foreheads touching in a tender moment. The child is wearing a white long-sleeved shirt with a small red tractor pattern and grey and white striped pants. The background is a bright, out-of-focus indoor setting.

EARLY  
SCREENING  
LEADS TO  
EARLY  
DIAGNOSIS

---



# WHY SCREEN?

Early screening leads to early diagnosis, which, in turn leads to early intervention – the most important thing we can do to help people with autism reach their full potential. Early intervention is effective because it occurs during a time when the brain is still developing. It's critically important that we identify and treat autism during this early developmental time period, which is why screening needs to be available to everyone, easily.

**This program allows parents to access early screening without waiting for their next pediatrician visit.**

## Participation Details

If you have any questions about your child's development, notice that your child is not doing things other children are doing, or see behaviors that seem different or odd, we recommend you call for a screening.

## This screening program is best suited for children ages 12 months to 3 years.


The Easy Access Autism Screening is completed over the phone using a tool called the Communication and Symbolic Behavior Scales: Infant-Toddler Checklist. Generally, this is a parent report questionnaire, but we are conducting it in an interview format for this project. This specific assessment was chosen because it asks questions regarding the development of a child's communication and play behavior, which are known to be the primary indicators of developmental delays. This interview consists of 24 questions assessing the way your child interacts socially, his/her speech, and his/her play behavior.

After completing the screening, our team may recommend you seek a formal diagnostic evaluation for your child. Or, they may recommend that a formal evaluation is not needed.

**PLEASE NOTE:** Participating in this screening does not result in an autism diagnosis.



**CONTACT OUR TEAM TO ENROLL TODAY**

 602.218.8204

 [EZscreen@autismcenter.org](mailto:EZscreen@autismcenter.org)



A photograph of a man and a woman embracing warmly. The man, on the left, has a beard and glasses, is wearing a light blue button-down shirt, and has his eyes closed with a joyful smile. The woman, on the right, has long brown hair tied back and is wearing a bright yellow top. They are sitting on a patterned rug. The background is softly blurred, showing a green plant and a white wall.

SCREENING  
IS AS EASY  
AS MAKING  
A PHONE  
CALL

---



# WHAT IS AUTISM?

---

Autism spectrum disorder (ASD) is a neurodevelopmental disorder characterized by symptoms in two core areas:

- **Challenges with social communication**
- **Restricted and repetitive behaviors and interests**

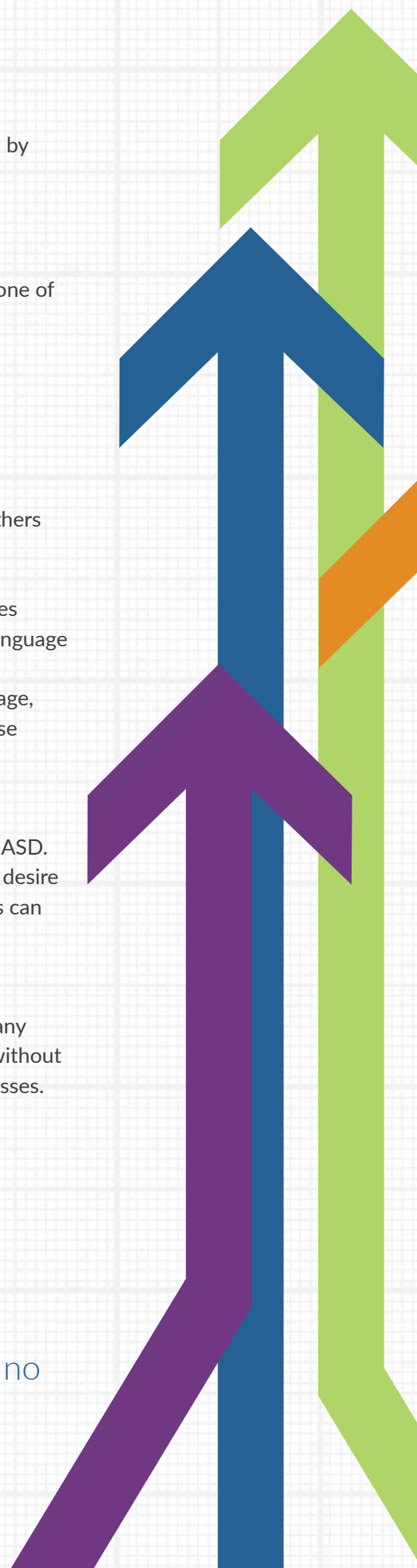
ASD is a developmental disorder so individuals must demonstrate symptoms in one of these core areas during the early developmental period.

## The Presentation of ASD Can Vary Widely from Person-to-Person

- **COGNITION** Some people may have significant cognitive impairment, while others are gifted in some areas. Many have average or near-average IQ.
- **COMMUNICATION** Individuals with ASD may experience a variety of difficulties using and understanding all different kinds of communication. For example, language development may be significantly delayed in some, while others will develop language on time, but have difficulty with social conversations. Beyond language, there can be similar challenges with intonation and gestures. Collectively, these impairments can present additional barriers to developing social skills.
- **SOCIALIZATION** Social challenges are a hallmark feature of ASD. Like communication, there is variability in these challenges across individuals with ASD. Some may have little or no desire to socialize, while others may have a strong desire to socialize, but may not know how to engage appropriately. These challenges can affect a person's ability to develop and maintain relationships.
- **NO ONE PRESENTATION FITS EVERYONE WITH ASD** It's important to avoid stereotypes like, "All people with autism do..." Remember, there are just as many individual differences among people with autism as there are among people without autism. Each person has his or her own combination of strengths and weaknesses.

16

One current early indicator of ASD is no single words by 16 months.





ONE IN  
FIFTY-  
FOUR  
CHILDREN  
HAVE ASD

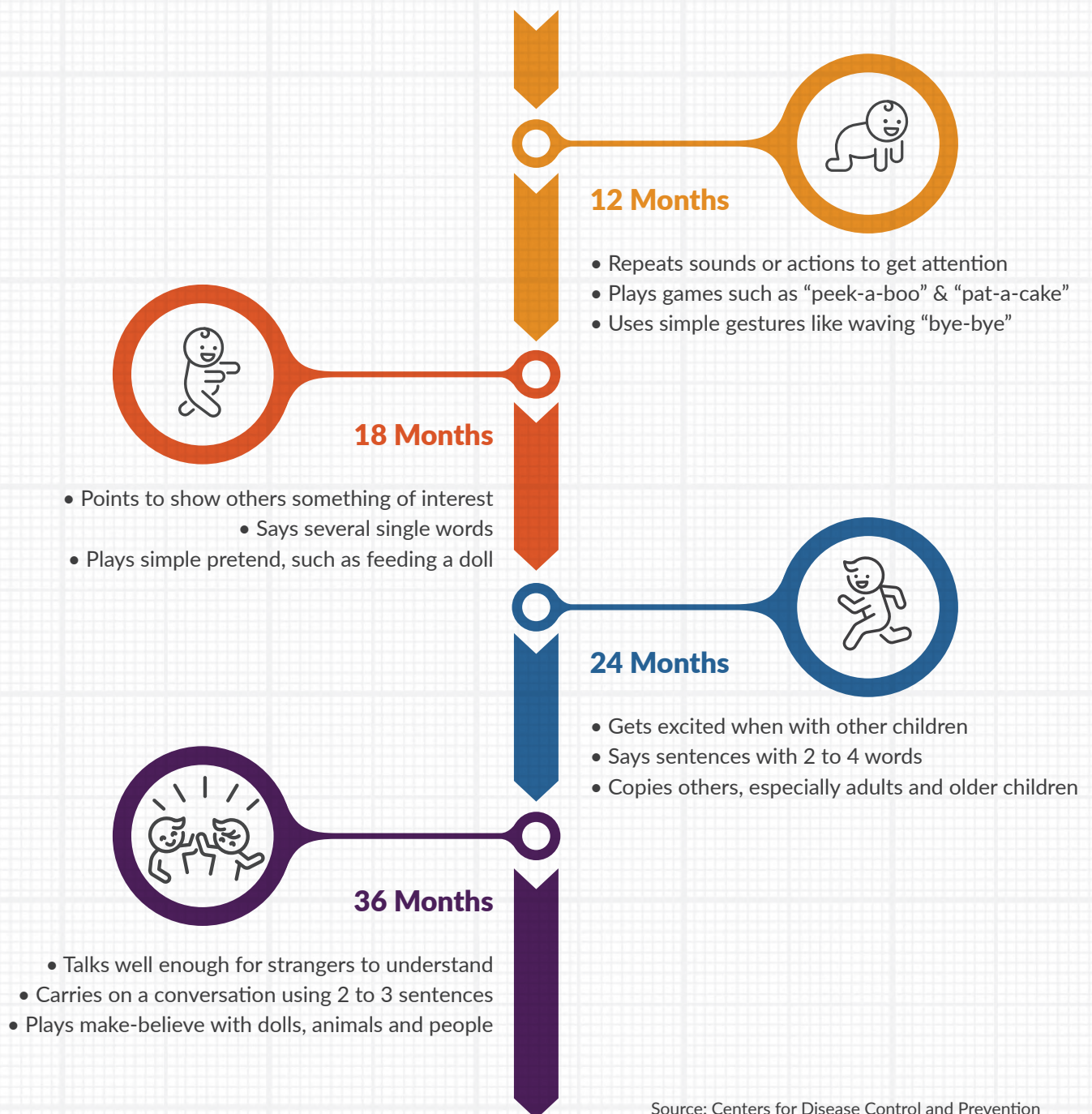
---





# DEVELOPMENTAL MILESTONES

As babies grow, they develop new skills relatively easily and quickly. Developmental milestones are skills that most children perform within a certain age range. To determine if your child's development is on track, review the developmental milestones listed below.





A smiling man with dark hair, wearing a dark blue t-shirt and jeans, is holding a baby in his arms. The baby is wearing a white onesie with small polka dots. They are in a bright, modern living room with a white bookshelf in the background containing books and a small plant. A window is visible on the right, and a striped rug is on the floor. The overall atmosphere is warm and affectionate.

# MONITOR YOUR BABY'S MILESTONES

---



# EARLY INTERVENTION RESOURCES AT SARRC



The autism journey can be confusing and difficult to navigate. Our goal is to provide a clear path for families seeking a diagnosis, starting treatment or facing a new life transition.

SARRC offers support to individuals and families who are concerned about autism spectrum disorder. Depending on where you are on your journey, we are here to help you:

- Monitor your infant's developmental milestones
- Obtain a diagnostic evaluation to determine if developmental or social differences are due to autism
- Learn about Applied Behavior Analysis (ABA) and early intervention treatment options
- Gain skills for teaching your young child early social communication
- Prepare for your child, teen or adult's next transition
- Discover resources available at SARRC and in your community

## SARRC Services & Programs



### Diagnostic Services

Autism evaluations for all ages



### Milestones Program

Support for parents of infants ages 6-18 months to help keep a child's development on track



### Family Orientation

Navigating autism treatment options for children, teens and adults



### Jumpstart Program

Empowering parents of young children with a new diagnosis of autism

## CONTACT OUR TEAM

SARRC's Intake Specialists are ready to speak with you regarding your diagnostic and treatment needs.

➔ To speak with a member of our team, contact us at 602.606.9806

➔ Para hablar con alguien en Español llame al 480.603.3283 o [autismcenter.org/se-habla-espanol](https://autismcenter.org/se-habla-espanol)



# UNDERSTAND YOUR TREATMENT OPTIONS

---





# FREQUENTLY ASKED QUESTIONS

---



## What is an autism screening?

The Easy Access Autism Screening is for parents who might have concerns about their young child's development or functioning. These parents have not yet sought any guidance from their pediatrician or another professional, or they have already, but they do not agree with the results.

The screening is a simple process that will determine the need for an autism diagnosis. The results are entirely based on your responses to our questions.

## How is an autism screening different than an autism diagnosis?

An autism screening is brief and based on just one source of information, usually the parent. The results can only suggest that parents seek an evaluation for more definitive information.

### **DIAGNOSTIC EVALUATIONS ARE BASED ON MULTIPLE SOURCES OF INFORMATION INCLUDING:**

- *In-depth historical information from the parent*
- *A direct observation or interaction with the child*
- *Skills-based assessments*

The process can result in a formal diagnosis from a licensed practitioner, a diagnostic report and guidance on treatment.

## What is the Communication and Symbolic Behavior Scales (CSBS) assessment?

Generally, this is a parent report questionnaire, but we are conducting the screening in an interview format for this project. The CSBS is strictly a screening tool and the only outcome will be a recommendation to seek a formal diagnostic evaluation for your child, or not. This specific assessment was chosen because it asks questions regarding the development of typical social, communication, and play behavior. The assessment consists of 24 questions and can be completed in about 10 minutes.

## Who will conduct the screening?

While our screening will be conducted by staff members who have a great deal of experience working with individuals with autism and their parents, it is important to note they are not licensed professionals that can provide feedback regarding your child's functioning. The information you get from this process will be completely dependent upon your responses and the results of the screening questionnaire.

An autism screening can be completed over the phone in about 10 minutes.

10



THERE  
ARE NO  
COSTS TO  
PARTICIPATE

---





# FREQUENTLY ASKED QUESTIONS

---

## How long does the autism screening take?

Approximately 10-30 minutes, depending on the age of your child and the responses to our questions.

## What is the cost?

There is no cost to participate in the Easy Access Autism Screening program.

## How do I know if I should participate?

A parent may be concerned about their child's development for many reasons. If you have any questions about your child's development, notice that your child is not doing things other children are doing, or you see behaviors that seem different or odd, you should call for a screening. This screening process may support your concerns or put your mind at ease. It can also make you aware of behaviors and developmental milestones to monitor.

## Are there age limitations to receiving an autism screening at SARRC?

This screening is best suited for children ages 12 months to 3 years. For children outside of this range, parents should pursue an autism evaluation. Please contact a SARRC Intake Specialist for evaluation options.

Contact our team at **602.606.9806** or learn more at [autismcenter.org/diagnosis](https://autismcenter.org/diagnosis).

## What are the benefits of completing an autism screening?

- **Accessibility:** More accessible than a formal evaluation.
- **Low commitment:** It's easy to make a phone call, no appointment is necessary.
- **Dedicated attention:** There is no other purpose to the call.
- **Free:** There are no costs or insurance involved.
- **Important results:** Puts you on a track to pursue a formal diagnosis, if necessary.
- **Peace of mind:** Screening will validate your concerns or let you know there is nothing to worry about at this time.

## If the screener indicates signs and symptoms of autism, what is next?

Parents will receive a resource packet that outlines the steps for seeking a formal evaluation through SARRC or another community provider. The staff member who completes the screening will offer to connect parents with our diagnostic network coordinator to assist with the process of scheduling a formal evaluation.

The next steps are up to the parents who can choose to pursue a direct evaluation at SARRC, in the community, get a second opinion, or do nothing. Parents will be provided with resources and contact information if needed.





GET  
SOME  
PEACE  
OF  
MIND

---





# DIAGNOSTIC SERVICE PROVIDERS

---

## Ascend Behavior Partners

3420 E Shea Blvd  
Phoenix, AZ 85028  
520.485.8846  
[ascendbehavior.com](http://ascendbehavior.com) | [hello@ascendbehavior.com](mailto:hello@ascendbehavior.com)

## Child and Adolescent Psychology Professionals

Dr. Lisa Outhier  
7330 North 16th Street, Suite C-200  
Phoenix, Arizona 85020  
602.910.2292 | [childpsychaz.com/index.html](http://childpsychaz.com/index.html)

## Developmental & Educational Psychological Services (DEPS)

Dr. Carol McLean evaluates children; priority is ages 18m-5y  
8687 E Via de Ventura, Suite 214  
Scottsdale, AZ 85258  
480.659.5563  
[depassessment.com](http://depassessment.com) | [info@depassessment.com](mailto:info@depassessment.com)

## Dr. Allison Cuoco at Milestones

34225 N 27th Drive, Building 4B, Suite 130  
Phoenix, AZ 85085  
602.456.1528  
[Drcuoco@milestonesllc.com](mailto:Drcuoco@milestonesllc.com)  
[milestonesclinicalservices.com](http://milestonesclinicalservices.com)

## Dr. Drake Duane at Developmental Discovery Center

8585 E Bell Road Suite 101-A, Scottsdale, AZ 85260  
480.860.1222  
[developmentaldiscoverycenter.com](http://developmentaldiscoverycenter.com)

## Gentry Foundation

Offers financial assistance for ASD eval to children under age 5 with no health insurance or who have AHCCCS  
602.312.1911 | [thegentryfoundation.org](http://thegentryfoundation.org)  
Application: [thegentryfoundation.org/wp-content/uploads/2019/05/Gentry-Foundation-Application.pdf](http://thegentryfoundation.org/wp-content/uploads/2019/05/Gentry-Foundation-Application.pdf)

## Gentry Pediatric Behavioral Services

7600 N 16th Street, Suite 218  
Phoenix, AZ 85020  
602.312.1911 | [gentrypbs.com](http://gentrypbs.com)

## InBloom Autism Services

Serves 18m - 5y  
4602 E University Drive, Suite 130  
Phoenix, AZ 85034  
877.779.6149 ext. 2 | [inbloomautism.com/diagnosing](http://inbloomautism.com/diagnosing)

## The Melmed Center

4848 E Cactus Road, Suite 940  
Scottsdale, AZ 85254  
480-443-0050 | [melmedcenter.com](http://melmedcenter.com)  
Can accommodate Spanish speaking families for appointment setting if they have translator available

## The Nicholls Group

9965 N 95th Street, Suite 101  
Scottsdale, AZ 85254  
480.998.3169  
[thenichollsgroup.com](http://thenichollsgroup.com) | [info@thenichollsgroup.com](mailto:info@thenichollsgroup.com)

## Phoenix Children's Hospital

1919 E Thomas Road  
Phoenix, AZ 85016  
602.933.2327  
[phoenixchildrens.org/centers-programs/autism](http://phoenixchildrens.org/centers-programs/autism)

## Terry Matteo, Ph.D.

7600 N 15th Street  
Phoenix, AZ 85020  
480.382.4142 | [terrymatteophd.com](http://terrymatteophd.com)

## Southwest Autism Research & Resource Center

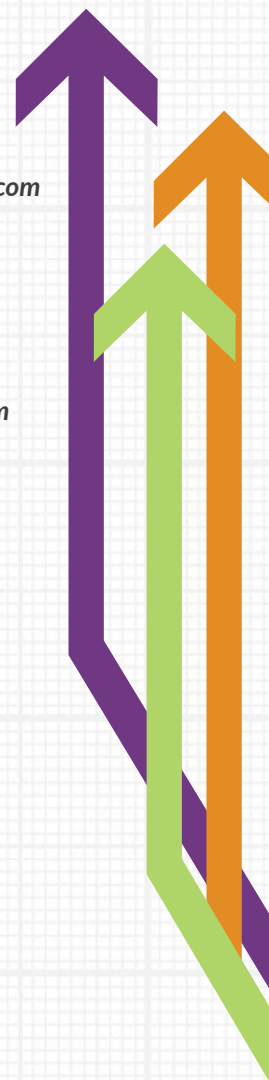
2225 N 16th Street  
Phoenix, AZ 85006  
602.606.9806 | [autismcenter.org/diagnosis](http://autismcenter.org/diagnosis)

## Southwest Human Development

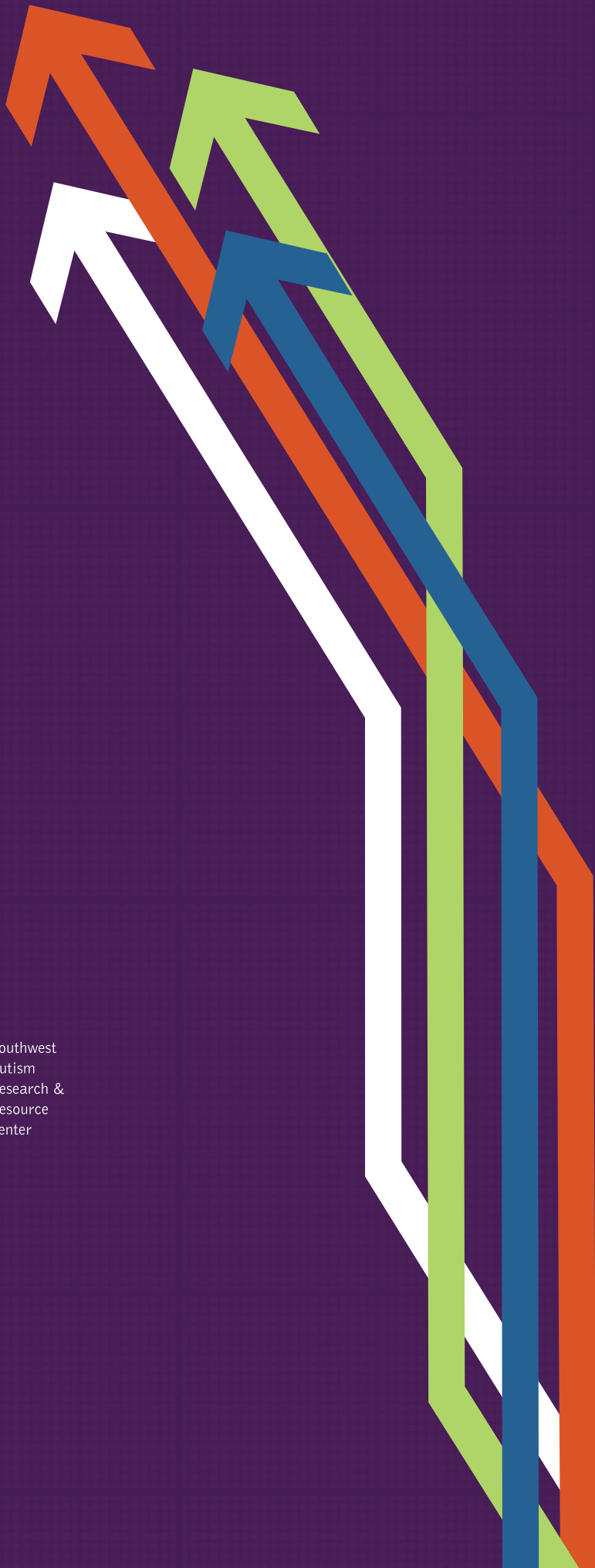
2850 N. 24th Street  
Phoenix, Arizona 85008  
602.468.3430 | [swhd.org](http://swhd.org)

## Young Mind Center

3202 E Mountain View Road  
Phoenix, AZ 85028  
602.237.6653  
[youngmindcommunity.org/clinical/evaluations/autism](http://youngmindcommunity.org/clinical/evaluations/autism)







SARRC

Southwest  
Autism  
Research &  
Resource  
Center



Community  
Foundation  
for Southern Arizona