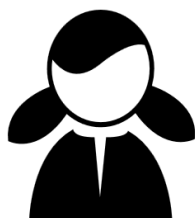


# WHO ARE ALASKA'S CTE STUDENTS?

2022-2023 STATEWIDE AVERAGES



**43%**

Of CTE participants are female

**40%** Are economically disadvantaged

**29%** Are NTO\*

**12%** Are in disabled

**10%** Are migrant

**7.4%** Are English Learners

\* Nontraditional Occupations

## DEMOGRAPHICS



👤 Caucasian— 52%; 
 👤 Alaska Native—16%; 
 👤 Two or more races—13%; 
 👤 Hispanic—7.6%; 
 👤 Asian—6.6%; 
 👤 Pacific Islander—2.6%; 
 👤 Black—2.2%;

## CTE IN ALASKA



**96% GRADUATION**

4-year cohort CTE concentrators<sup>‡</sup>. Concentration in a CTE pathway is associated with high-rates of HS graduation.

<sup>‡</sup> Students with  $\geq 2.0$  HS CTE credits



**16%**

Alaskan graduates are CTE concentrators



**32%**

Of students took at least one CTE class in high school

**74%**

Of CTE concentrators go on to postsecondary, adv. training, the military, or employment.

	2018	2019	2020	2021	2022	2023	5 year trend
<b>Female participants</b>	42.77%	43.02%		41.22%	42.88%	42.71%	→
<b>Economically disadvantaged</b>	40.74%	40.57%		33.88%	34.37%	39.50%	↗
<b>NTO</b>	31.89%	30.72%		34.15%	31.99%	28.86%	↘
<b>ELL &amp; Migrant</b>	14.06%	15.15%		16.79%	16.42%	17.25%	↗
<b>Disabled</b>	13.96%	13.80%		12.11%	11.30%	11.75%	→
	2018	2019	2020	2021	2022	2023	5 year trend
<b>Caucasian</b>	54.69%	55.34%		53.59%	52.34%	51.46%	→
<b>Alaska Native</b>	15.00%	14.88%		16.56%	16.69%	16.44%	→
<b>Asian</b>	7.60%	7.22%		6.00%	6.43%	6.56%	→
<b>Multiracial</b>	9.21%	9.64%		12.22%	12.72%	13.10%	↗
<b>Hispanic</b>	6.84%	6.38%		7.15%	7.43%	7.63%	→
<b>Black</b>	3.13%	2.80%		1.99%	2.12%	2.21%	→
<b>Pacific Islander</b>	2.22%	2.60%		2.49%	2.27%	2.61%	→
	2018	2019	2020	2021	2022	2023	5 year trend
<b>CTE Concentrator graduation rate</b>	94.43%	94.79%		96.91%	97.72%	96.30%	→
<b>CTE Participants</b>	33.56%	30.08%		20.57%	30.33%	31.50%	→
<b>% of AK grads who are CTE Concentrators</b>	17.38%	17.50%		25.93%	42.75%	15.46%	↘
<b>Placement rate</b>	69.45%	72.69%		67.62%	73.80%	73.64%	→