



DEPARTMENT OF CODES AND REGULATIONS  
DIVISION OF PLANNING & DESIGN SERVICES  
LOUISVILLE, KENTUCKY

GREG FISCHER  
MAYOR

PHILLIP C. BILLS, AICP, DIRECTOR

## Planning Director's Interpretation Number 01-12

### Automobile Storage Facilities

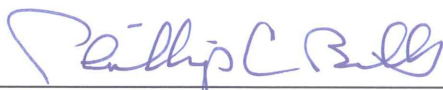
An application was recently filed for a Conditional Use Permit for an "auto salvage yard" for Copart off Stonestreet Road near I-265 (3100 Pond Station Road). In reviewing the operation of the facility it is the opinion of the Director of Planning and Design Services that this operation is not a "Scrap Metal Processing Facilities and Junkyards" as listed in Chapter 4, Part 2 of the Land Development Code. Facilities of this type are for the purpose of processing of scrap metals, frequently including old vehicles or those damaged beyond repair for the recycling of the metals for shipment to facilities that reuse the steel products.

The Copart operation is, effectively, a temporary storage facility for automobiles that have been involved in accidents and damaged. The vehicles are parked in a fashion that permits easy access to the vehicles. The vehicles are not stacked nor are they "parted out," that is, parts are not removed for resale. The vehicles are sold "as is" and removed from the property for repair and reuse.

Therefore, it is the opinion of the Director that a Conditional Use Permit is not required for this operation and that it qualifies as a permitted use under the provisions of the M-2 Industrial District under the category of **USES, MANUFACTURE, PROCESSING, TREATMENT OR STORAGE OF THE FOLLOWING: Assembly and repair of automobiles, bicycles, carriages, engines (new and rebuilt, motorcycles, trailers, trucks, wagons, including parts"**

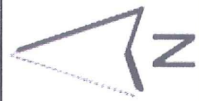
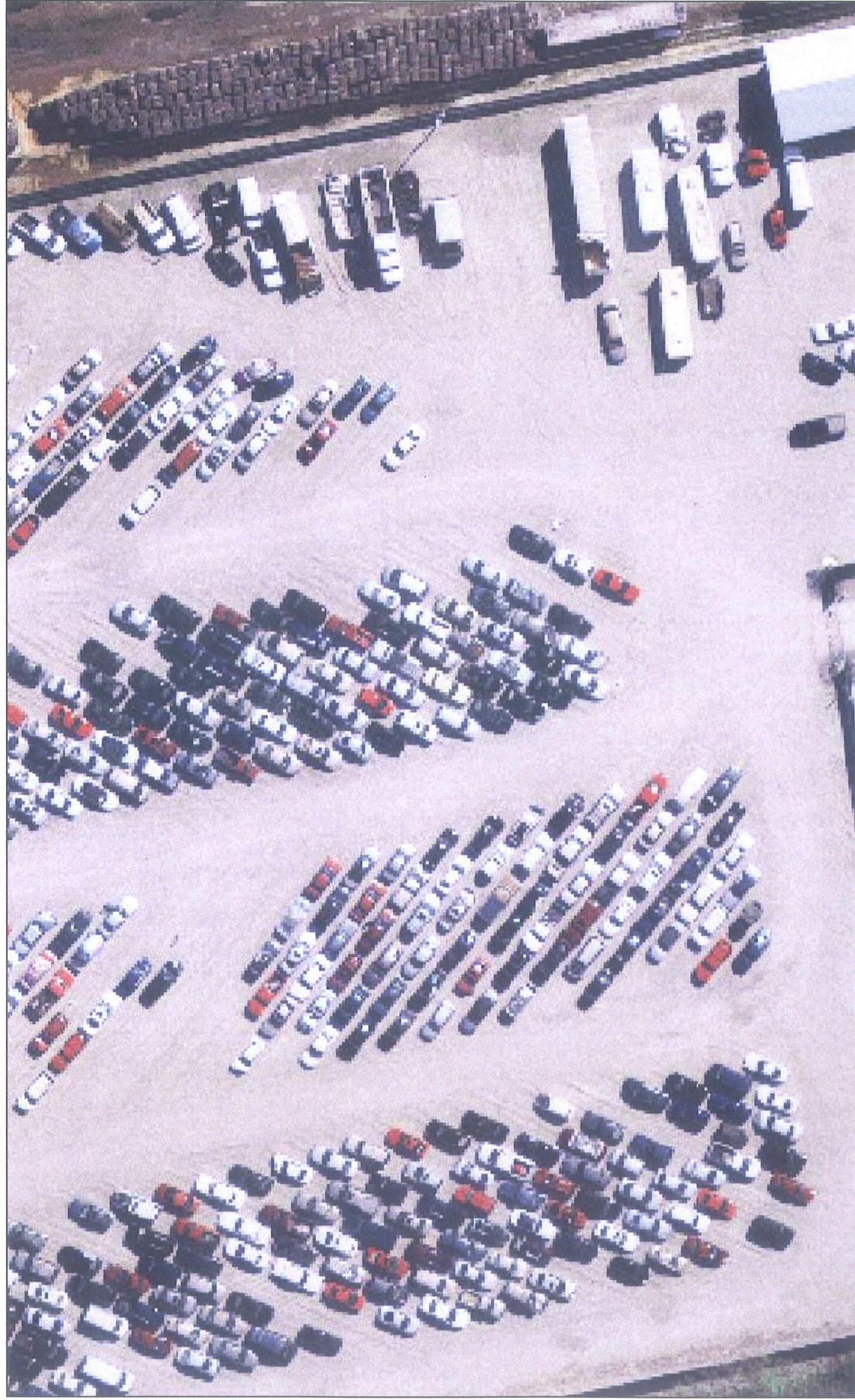
The attached aerial photo of the Copart site located at 1049 Outer Loop depicts the typical design and operation of Copart facilities.

Approved By:

  
Phillip C. Bills, AICP  
Director

Effective Date: July 12, 2012





0 30 60ft

## 1049 OUTER LOOP

Thursday, July 12, 2012 9:26:20 AM



Louisville Metro, MSD, LWC & PVA © 2012  
This map is not a legal document and should only be used  
for general reference and identification.