



FREMONT SIPHON

replacement project



King County

Department of
Natural Resources and Parks
Wastewater Treatment Division

Project Update

July 1, 2015

Burke-Gilman Trail detour begins week of July 6

King County's contractor for the Fremont Siphon Replacement Project finished building the watertight ring around the tunnel launch shaft at the Fremont site. The ring will control groundwater to protect against settlement of nearby buildings, streets and utilities when the tunnel shaft is dug. Crews will begin digging out the shaft next week.

The contractor will also begin work to move a City of Seattle Combined Sewer Overflow drain pipe during the week of Monday July 6. To allow safe passage around the project site, the Burke-Gilman Trail will

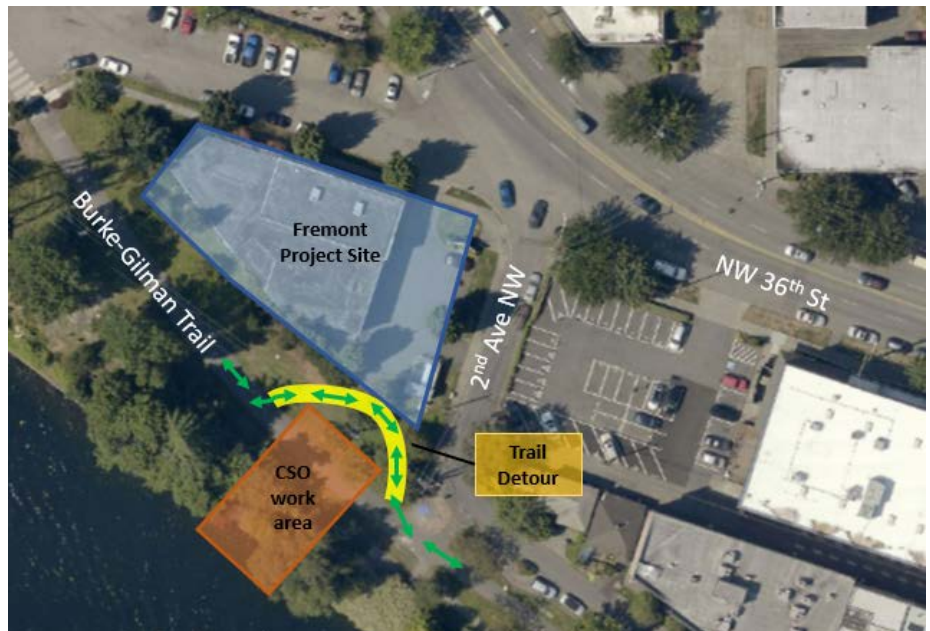
be **detoured on to a temporary paved path**, just north of the existing trail (see map). The detour will be **in effect through mid-August**.

Construction equipment such as backhoes and dump trucks will occasionally cross the trail to the work area between the Ship Canal and Burke-Gilman Trail. Flaggers will direct trail traffic near the project area to keep trail traffic away from construction equipment working in the trail. Brief delays may occur. The detour route responds to community requests that trail traffic not be detoured to nearby streets.

Part of Fremont Canal Park south of the Fremont project site will be fenced and closed to the public during this phase of the project.

What to expect:

- Work from 7 a.m. – 6 p.m. on weekdays
- Burke-Gilman Trail detour at project site in effect at all times
- Construction equipment and vehicles crossing the Burke-Gilman Trail
- Flaggers and signs to direct trail traffic to detour path
- Crews and equipment on and around the Fremont project site
- Fencing and no public access to Fremont Trail Park south of the Fremont project site
- Increased noise and activity near the Fremont project site
- No work at either project site on Friday, July 3



For more information

Call the 24-hour project information line:

206-205-5428

Visit: www.kingcounty.gov/fremontsiphon

Email: doug.marsano@kingcounty.gov

ALTERNATIVE FORMATS AVAILABLE

206-477-5371/ 711 (TTY Relay)