



## Employment Facts and Statistics

Office of Economic Opportunity  
Veterans Benefits Administration  
BLS Figures (non-seasonally adjusted)

### August-15

#### Unemployment

Cohort (% of total)	Rate	Change	Level	Change	Non-Vets
<b>National</b>	<b>5.1%</b>	<b>-0.2%</b>	<b>8.0M</b>	<b>-300,000</b>	<b>-</b>
>27 Weeks			2.2M	0	-
<b>All Veterans (100%)</b>	<b>4.2%</b>	<b>-0.5%</b>	<b>449,000</b>	<b>-52,000</b>	<b>5.1%</b>
Male	4.1%	-0.6%	385,000	-57,000	4.8%
Female	5.2%	0.2%	64,000	5,000	5.3%
<b>Post-9/11 Veterans (38%)</b>	<b>4.7%</b>	<b>-2.0%</b>	<b>134,000</b>	<b>-56,000</b>	<b>-</b>
Male	4.6%	-2.0%	112,000	-49,000	-
Female	5.0%	-2.0%	22,000	-7,000	-
<b>18-24 Veterans (4%)</b>	<b>9.2%</b>	<b>-0.6%</b>	<b>18,000</b>	<b>1,000</b>	<b>10.1%</b>
Male	9.9%	0.4%	15,000	2,000	10.7%
Female*	7.0%	-4.1%	3,000	-1,000	9.4%
<b>25-34 Veterans (21%)</b>	<b>6.6%</b>	<b>-1.0%</b>	<b>95,000</b>	<b>-14,000</b>	<b>5.2%</b>
Male	6.6%	-0.8%	80,000	-9,000	4.8%
Female	6.8%	-2.2%	15,000	-4,000	5.7%
<b>35-44 Veterans (10%)</b>	<b>2.3%</b>	<b>-1.9%</b>	<b>46,000</b>	<b>-38,000</b>	<b>4.0%</b>
Male	1.6%	-2.1%	28,000	-34,000	3.5%
Female	5.7%	-1.1%	18,000	-4,000	4.5%
<b>45-54 Veterans (23%)</b>	<b>3.7%</b>	<b>0.4%</b>	<b>104,000</b>	<b>11,000</b>	<b>4.0%</b>
Male	3.7%	0.0%	90,000	-1,000	3.4%
Female	3.7%	3.2%	14,000	12,000	4.5%
<b>55+ Veterans (42%)</b>	<b>4.4%</b>	<b>-0.3%</b>	<b>187,000</b>	<b>-12,000</b>	<b>3.9%</b>
Male	4.4%	-0.3%	173,000	-13,000	3.5%
Female	5.2%	0.4%	14,000	2,000	4.2%

\* Does not meet BLS publication criteria

- 50,000 (19%) of all 18-54 Veterans (263,000) are enrolled in school either part time or full time

#### Unemployed by State Data

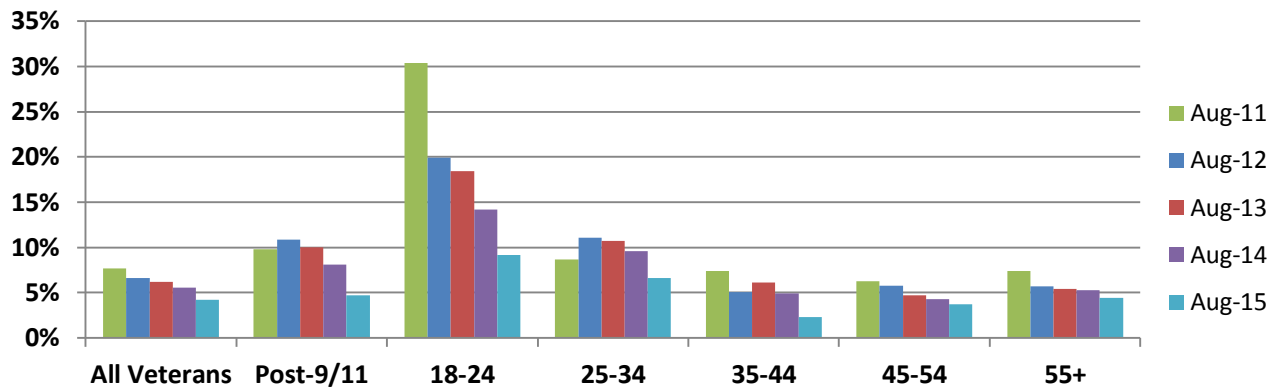
Highest Levels (45% of total)	Level	Highest Rates	Rate
California	75,000	Rhode Island	9.6%
Florida	48,000	California	8.8%
Texas	31,000	Washington, DC	*8.6%
Michigan	28,000	Michigan	8.6%
Maryland/Pennsylvania	21,000	Idaho	8.5%

\* Does not meet BLS publication criteria

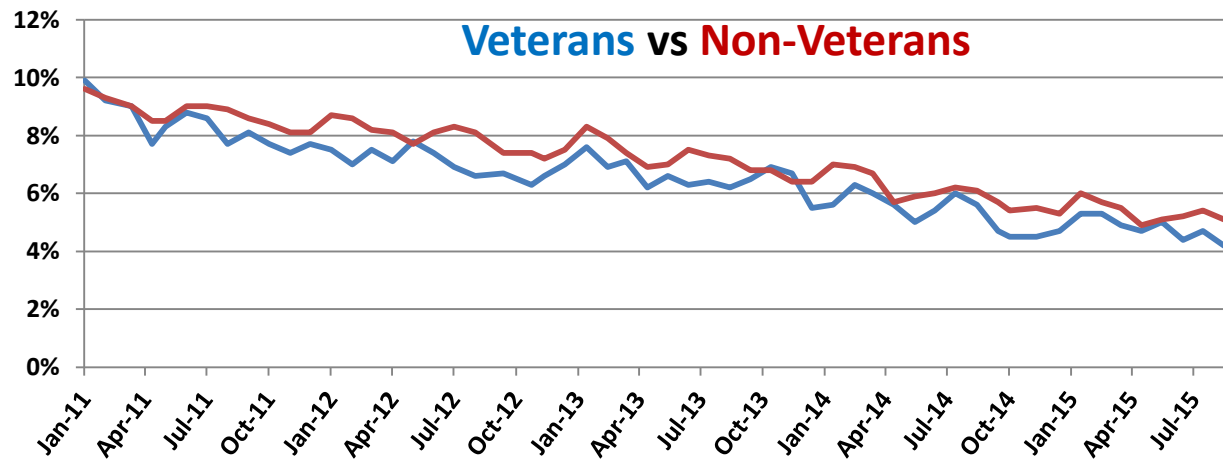
#### Employment Sectors

Sector	+/-	Sector	+/-
Healthcare	41,000	Wholesale Trade	Even
Professional/Business	33,000	Transportation/Warehousing	Even
Leisure & Hospitality	26,000	Construction	Even
Financial	19,000	Government	Even
Retail	Even	Manufacturing	17,000

## Year-Over-Year Comparison



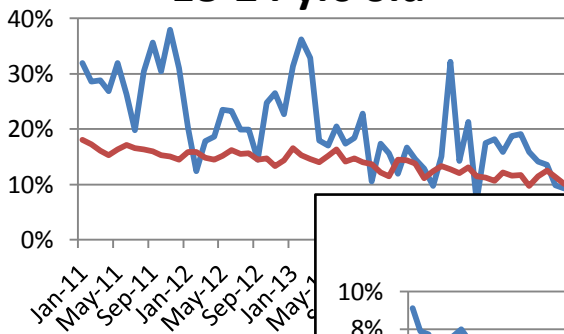
## Veterans vs Non-Veterans



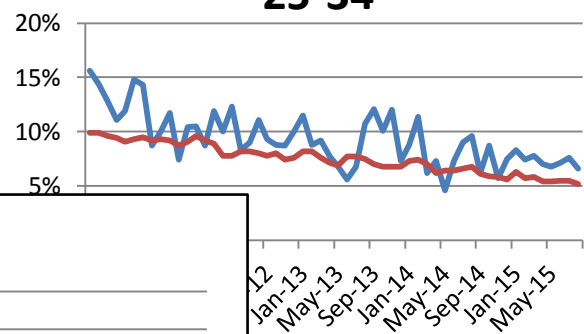
Vets / Non-Vets

Vets / Non-Vets

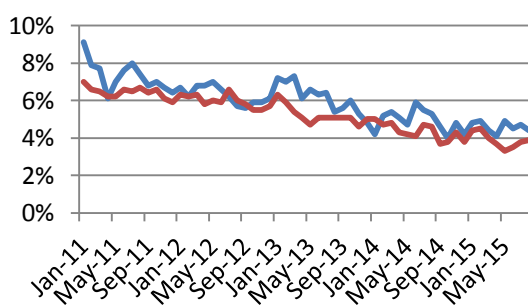
### 18-24 yrs old



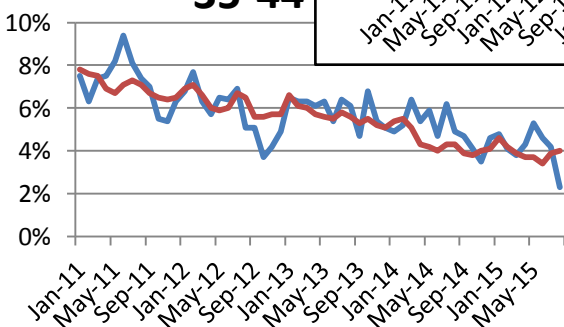
### 25-34



### 55+



### 35-44



### 45-54

