



## Employment Facts and Statistics

Office of Economic Opportunity  
 Veterans Benefits Administration  
 BLS Figures (non-seasonally adjusted)

### 1st Quarter 2015

#### Unemployment

Cohort (% of total)	Rate	Change	Level	Change	Non-Vets
<b>All Veterans (100%)</b>	<b>5.2%</b>	<b>0.6%</b>	<b>561,000</b>	<b>68,000</b>	<b>5.7%</b>
Male	5.1%	0.7%	485,000	71,000	6.2%
Female	5.9%	-0.1%	76,000	-4,000	5.2%
<b>Post-9/11 Veterans (35%)</b>	<b>7.0%</b>	<b>0.4%</b>	<b>197,000</b>	<b>17,000</b>	-
Male	7.3%	1.2%	174,000	34,000	-
Female	5.6%	-3.1%	24,000	-17,000	-
<b>18-24 Veterans (7%)</b>	<b>17.9%</b>	<b>2.9%</b>	<b>39,000</b>	<b>12,000</b>	<b>11.8%</b>
Male	18.7%	2.7%	32,000	8,000	13.5%
Female*	14.9%	4.3%	7,000	4,000	10.1%
<b>25-34 Veterans (20%)</b>	<b>7.8%</b>	<b>0.5%</b>	<b>114,000</b>	<b>12,000</b>	<b>5.9%</b>
Male	8.1%	0.9%	100,000	17,000	6.3%
Female	6.3%	-1.5%	14,000	-5,000	5.5%
<b>35-44 Veterans (16%)</b>	<b>4.2%</b>	<b>0.2%</b>	<b>87,000</b>	<b>7,000</b>	<b>4.7%</b>
Male	4.0%	0.9%	70,000	18,000	4.9%
Female	5.4%	-3.2%	17,000	-11,000	4.5%
<b>45-54 Veterans (21%)</b>	<b>4.2%</b>	<b>0.9%</b>	<b>117,000</b>	<b>24,000</b>	<b>4.2%</b>
Male	4.0%	0.7%	97,000	17,000	4.4%
Female	5.2%	1.6%	20,000	7,000	4.0%
<b>55+ Veterans (36%)</b>	<b>4.7%</b>	<b>0.4%</b>	<b>203,000</b>	<b>12,000</b>	<b>4.3%</b>
Male	4.6%	0.3%	185,000	11,000	4.7%
Female	5.6%	0.9%	18,000	1,000	3.9%

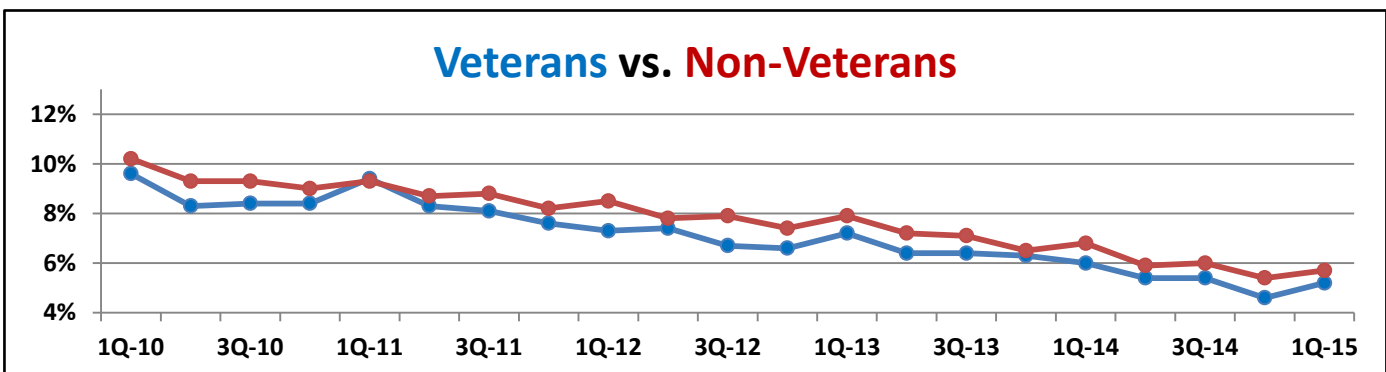
\* Does not meet BLS publication criteria

- 40,000 (11.2%) of all 18-54 Veterans (357,000) are enrolled in school either part time or full time

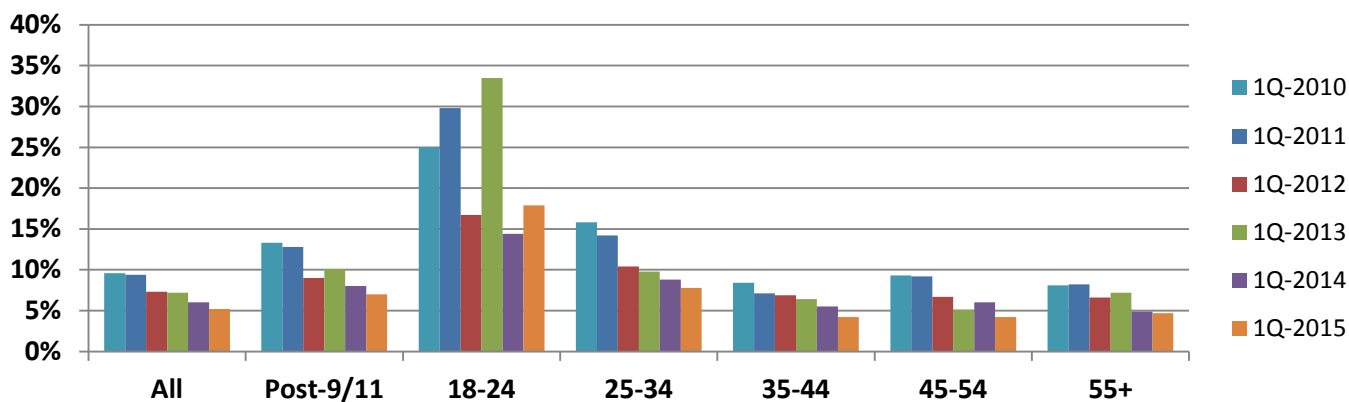
#### Unemployment by State

Highest Levels (37% of total)	Level	Highest Rates	Rate
California	75,000	District of Columbia	11.3%
Florida	48,000	Massachusetts	10.1%
Texas	34,000	Mississippi	10.1%
Georgia	26,000	Kansas	8.8%
Illinois	26,000	New Jersey	8.7%

\* Does not meet BLS publication criteria



## Year-Over-Year Comparison Veteran Unemployment

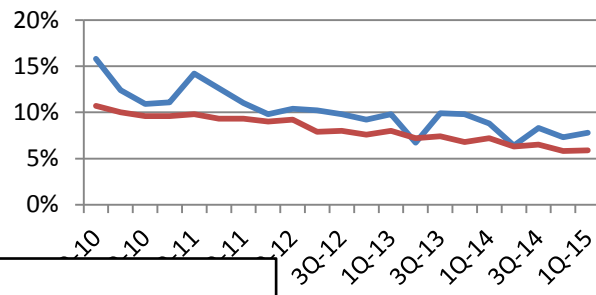
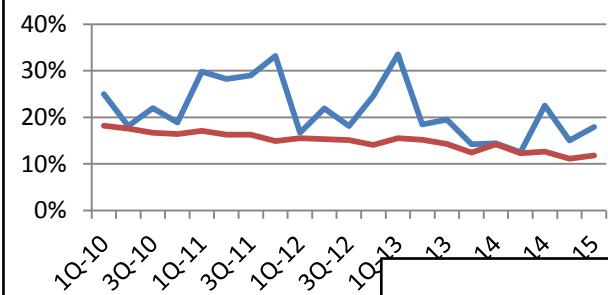


Vets/Non-Vets

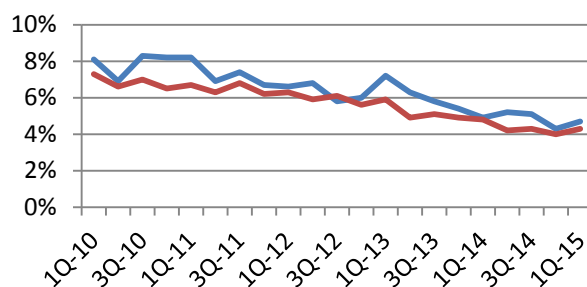
Vets/Non-Vets

### 18-24 yrs old

### 25-34



### 55+



### 35-44

### 45-54

