



## Employment Facts and Statistics

Office of Economic Opportunity  
 Veterans Benefits Administration  
 BLS Figures (non-seasonally adjusted)

### December-14

#### Unemployment

Cohort (% of total)	Rate	Change	Level	Change	Non-Vets
<b>National</b>	<b>5.6%</b>	<b>-0.2%</b>	8.7M	<b>-400,000</b>	-
>27 Weeks			2.8M	-	-
<b>All Veterans (100%)</b>	<b>4.7%</b>	<b>0.2%</b>	<b>507,000</b>	<b>15,000</b>	<b>5.3%</b>
Male	4.4%	0.0%	420,000	3,000	5.7%
Female	6.8%	0.9%	87,000	12,000	4.8%
<b>Post-9/11 Veterans (33%)</b>	<b>6.9%</b>	<b>1.2%</b>	<b>191,000</b>	<b>29,000</b>	-
Male	7.0%	1.7%	161,000	37,000	-
Female	6.6%	-1.5%	30,000	-8,000	-
<b>18-24 Veterans (7%)</b>	<b>18.2%</b>	<b>0.7%</b>	<b>34,000</b>	<b>-3,000</b>	<b>10.6%</b>
Male	18.1%	0.2%	30,000	-2,000	12.2%
Female*	19.0%	0.0%	4,000	0	9.0%
<b>25-34 Veterans (21%)</b>	<b>7.5%</b>	<b>1.8%</b>	<b>108,000</b>	<b>27,000</b>	<b>5.6%</b>
Male	7.5%	2.2%	89,000	26,000	5.6%
Female	7.5%	0.4%	19,000	1,000	5.6%
<b>35-44 Veterans (18%)</b>	<b>4.6%</b>	<b>1.1%</b>	<b>91,000</b>	<b>23,000</b>	<b>4.3%</b>
Male	3.9%	1.2%	65,000	20,000	4.6%
Female	8.4%	0.1%	25,000	2,000	4.0%
<b>45-54 Veterans (17%)</b>	<b>3.2%</b>	<b>-0.2%</b>	<b>88,000</b>	<b>-7,000</b>	<b>4.1%</b>
Male	2.9%	-0.6%	72,000	-15,000	4.4%
Female	5.2%	2.9%	16,000	8,000	3.7%
<b>55+ Veterans (37%)</b>	<b>4.2%</b>	<b>-0.6%</b>	<b>187,000</b>	<b>-24,000</b>	<b>3.8%</b>
Male	4.1%	-0.6%	165,000	-26,000	4.3%
Female	5.7%	-0.2%	22,000	2,000	3.3%

\* Does not meet BLS publication criteria

- 61,000 (19%) of all 18-54 Veterans (321,000) are enrolled in school either part time or full time

#### Unemployed by State Data

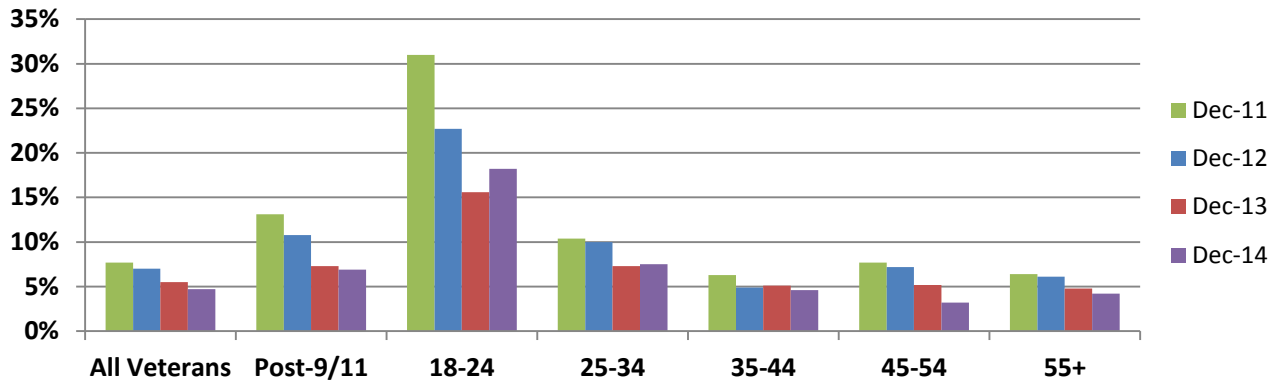
Highest Levels (37% of total)	Level	Highest Rates	Rate
California	57,000	New Jersey	13.2%
Florida	52,000	Massachusetts	11.3%
Washington	32,000	Washington	11.2%
Georgia	27,000	District of Columbia*	10.2%
Pennsylvania	22,000	Nevada	8.6%

\* Does not meet BLS publication criteria

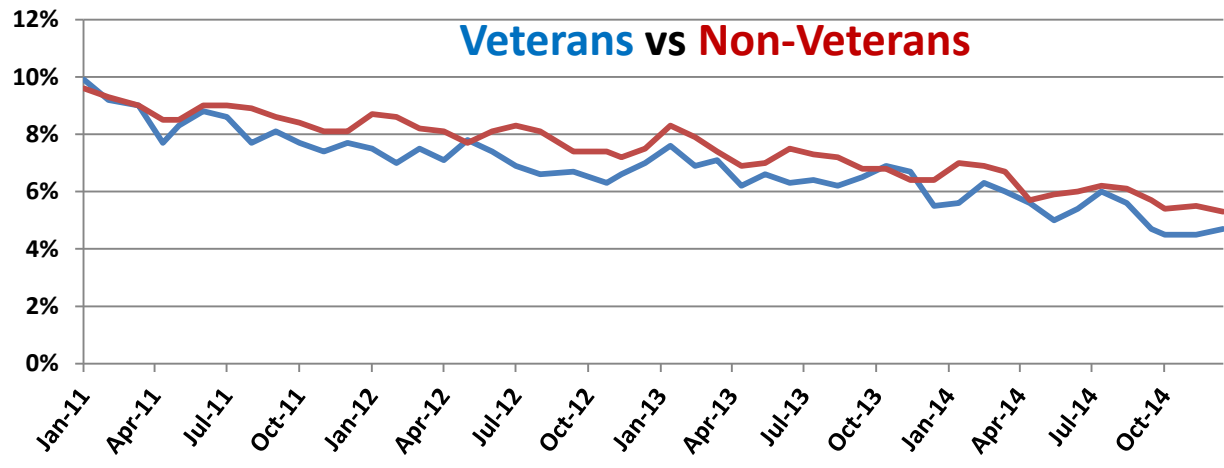
#### Employment Sectors

Sector	+/-	Sector	+/-
Professional/Business	52,000	Financial	Even
Construction	48,000	Transportation/Warehousing	Even
Food Services & Drinking Est.	44,000	Retail	Even
Healthcare	34,000	Government	Even
Manufacturing	17,000	Wholesale Trade	Even

## Year-Over-Year Comparison



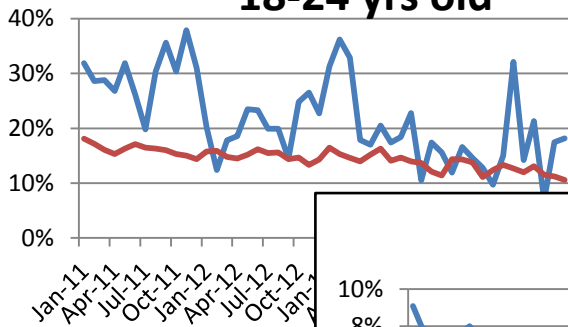
## Veterans vs Non-Veterans



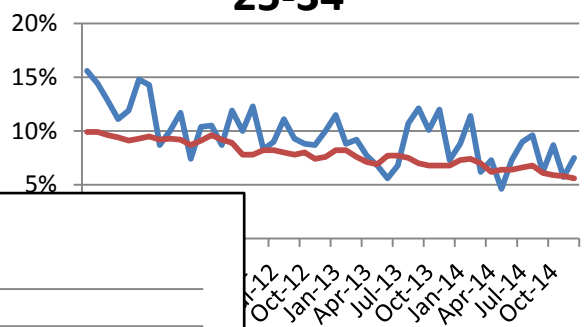
Vets / Non-Vets

Vets / Non-Vets

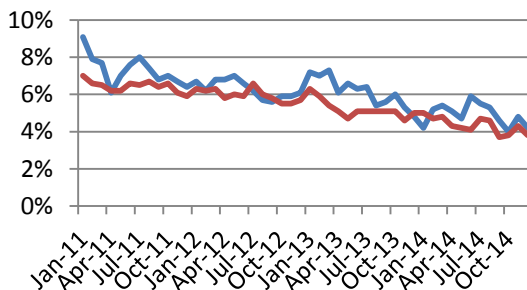
### 18-24 yrs old



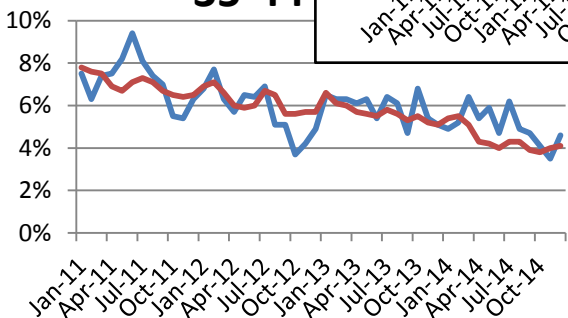
### 25-34



### 55+



### 35-44



### 45-54

