



Employment Facts and Statistics

Office of Economic Opportunity
 Veterans Benefits Administration
 BLS Figures (non-seasonally adjusted)

July-14

Unemployment

Cohort (% of total)	Rate	Change	Level	Change	Non-Vets
National	6.2%	0.1%	9.7M	200,000	-
>27 Weeks			3.2M	100,000	-
All Veterans (100%)	6.0%	0.6%	638,000	60,000	6.2%
Male	5.9%	0.8%	541,000	67,000	5.9%
Female	7.0%	-0.5%	97,000	-7,000	6.6%
Post-9/11 Veterans (36%)	9.2%	2.2%	228,000	53,000	-
Male	8.8%	2.5%	178,000	47,000	-
Female	10.7%	0.4%	50,000	6,000	-
18-24 Veterans (7%)	32.1%	17.1%	44,000	28,000	12.7%
Male	37.3%	20.3%	38,000	23,000	13.6%
Female*	17.4%	11.5%	6,000	5,000	11.8%
25-34 Veterans (19%)	9.0%	1.7%	122,000	18,000	6.6%
Male	8.6%	2.0%	98,000	20,000	6.1%
Female	11.2%	0.5%	24,000	-1,000	7.3%
35-44 Veterans (21%)	6.2%	1.5%	133,000	33,000	4.8%
Male	6.2%	2.7%	105,000	46,000	4.3%
Female	6.4%	-3.3%	28,000	-13,000	5.3%
45-54 Veterans (17%)	4.0%	0.0%	110,000	1,000	4.3%
Male	4.1%	-0.1%	97,000	-4,000	3.4%
Female	3.3%	1.0%	13,000	4,000	5.2%
55+ Veterans (36%)	5.5%	-0.4%	230,000	-19,000	4.7%
Male	5.2%	-0.5%	203,000	-18,000	4.1%
Female	8.6%	0.0%	26,000	-2,000	5.3%

* Does not meet BLS publication criteria

- 31,000 (7.6%) of all 18-54 Veterans (409,000) are enrolled in school either part time or full time

Unemployed by State Data

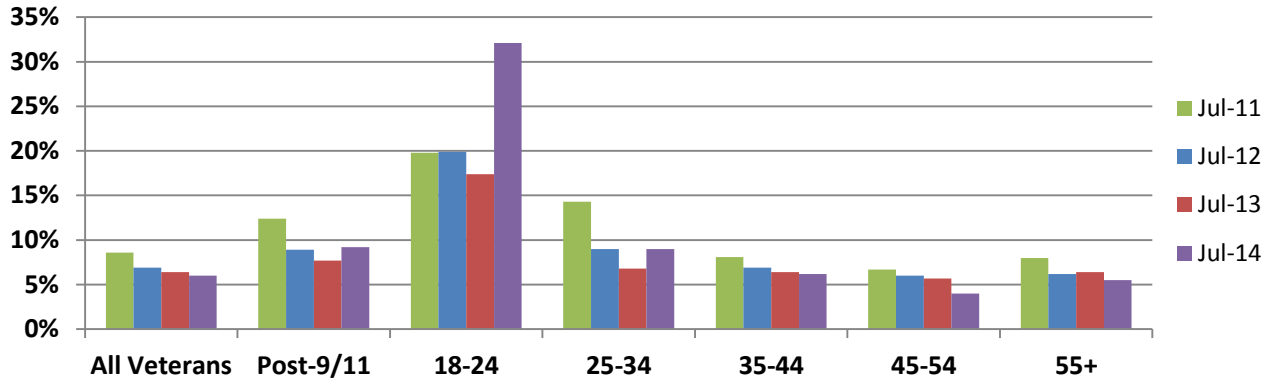
Highest Levels (39% of total)	Level	Highest Rates	Rate
California	77,000	Kansas	15.5%
Georgia	43,000	Nevada	13.4%
Texas	43,000	Georgia	10.9%
Florida	34,000	Delaware*	10.9%
New York	25,000	Massachusetts	10.4%

*Does not meet BLS Publication Criteria

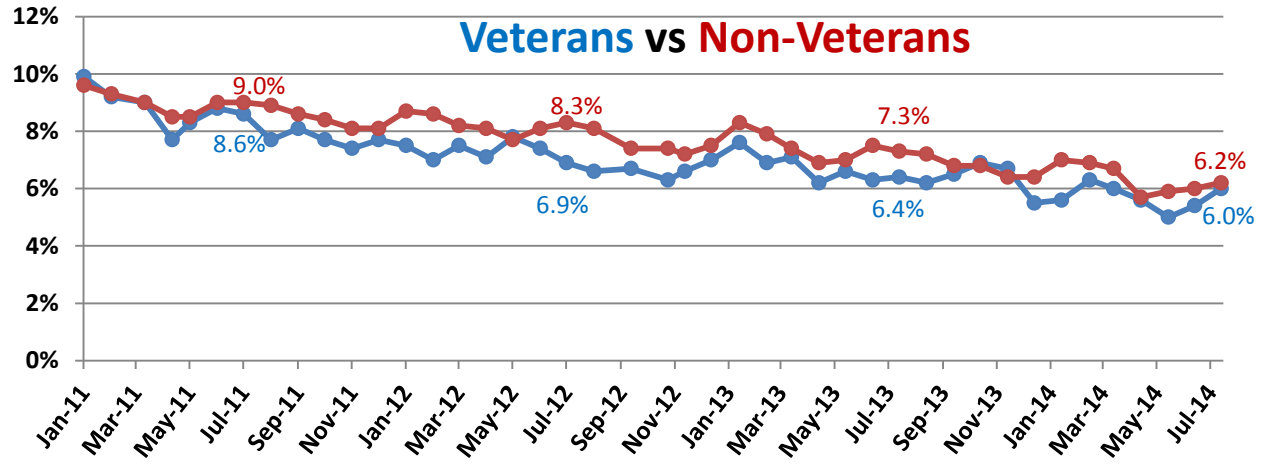
Employment Sectors

Sector	+/-	Sector	+/-
Professional/Business	47,000	Healthcare	Even
Manufacturing	28,000	Transportation/Warehousing	Even
Retail	27,000	Financial	Even
Construction	22,000	Wholesale Trade	Even
Mining	8,000	Government	Even

Year-Over-Year Comparison



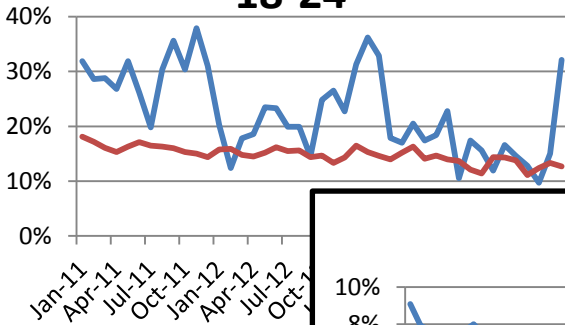
Veterans vs Non-Veterans



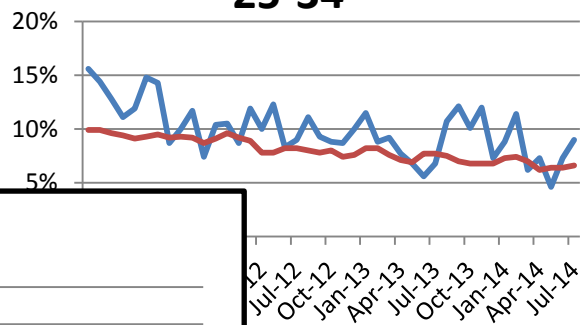
Vets / Non-Vets

Vets / Non-Vets

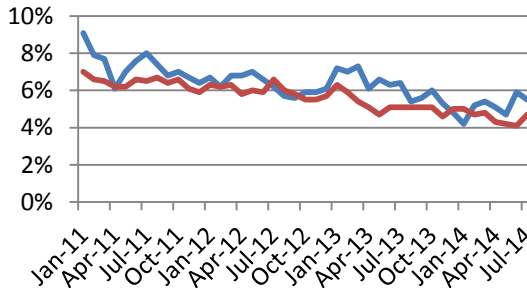
18-24



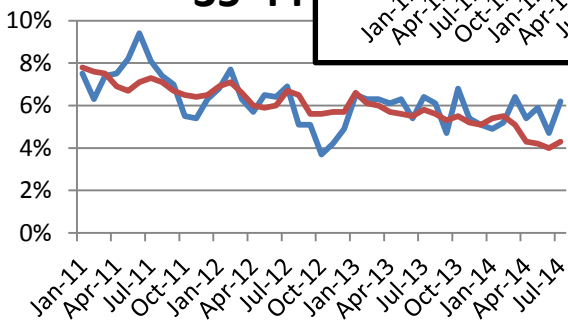
25-34



55+



35-44



45-54

