



## Employment Facts and Statistics

Office of Economic Opportunity  
 Veterans Benefits Administration  
 BLS Figures (non-seasonally adjusted)

### May-14

#### Unemployment

Cohort (% of total)	Rate	Change	Level	Change	Non-Vets
<b>National</b>	<b>6.3%</b>	0.0%	9.8M	0	-
>27 Weeks			3.4M	-100,000	-
<b>All Veterans (100%)</b>	<b>5.0%</b>	<b>-0.6%</b>	<b>538,000</b>	<b>-65,000</b>	<b>5.9%</b>
Male	4.9%	-0.7%	459,000	-63,000	6.1%
Female	5.8%	0.0%	79,000	-2,000	5.7%
<b>Post-9/11 Veterans (24%)</b>	<b>5.3%</b>	<b>-1.5%</b>	<b>130,000</b>	<b>-33,000</b>	-
Male	5.0%	-1.6%	102,000	-32,000	-
Female	7.3%	-0.4%	28,000	-2,000	-
<b>18-24 Veterans (2%)</b>	<b>9.7%</b>	<b>-3.1%</b>	<b>11,000</b>	<b>-3,000</b>	<b>12.4%</b>
Male	7.0%	-6.6%	7,000	-6,000	13.2%
Female*	25.6%	17.5%	4,000	3,000	11.5%
<b>25-34 Veterans (12%)</b>	<b>4.6%</b>	<b>-2.7%</b>	<b>64,000</b>	<b>-37,000</b>	<b>6.4%</b>
Male	4.0%	-3.3%	47,000	-37,000	6.7%
Female	7.8%	0.5%	17,000	0	6.0%
<b>35-44 Veterans (23%)</b>	<b>5.9%</b>	<b>0.5%</b>	<b>125,000</b>	<b>9,000</b>	<b>4.7%</b>
Male	5.3%	0.3%	91,000	4,000	4.7%
Female	8.4%	1.2%	34,000	5,000	4.8%
<b>45-54 Veterans (25%)</b>	<b>4.9%</b>	<b>-0.6%</b>	<b>135,000</b>	<b>-15,000</b>	<b>4.2%</b>
Male	5.0%	-1.0%	119,000	-20,000	4.0%
Female	4.2%	1.4%	16,000	5,000	4.4%
<b>55+ Veterans (38%)</b>	<b>4.7%</b>	<b>-0.4%</b>	<b>204,000</b>	<b>-18,000</b>	<b>4.2%</b>
Male	5.0%	0.1%	196,000	-4,000	4.2%
Female	2.3%	-4.3%	8,000	-14,000	4.3%

\* Does not meet BLS publication criteria

- 30,000 (9.0%) of all 18-54 Veterans (335,000) are enrolled in school either part time or full time

#### Unemployed by State Data

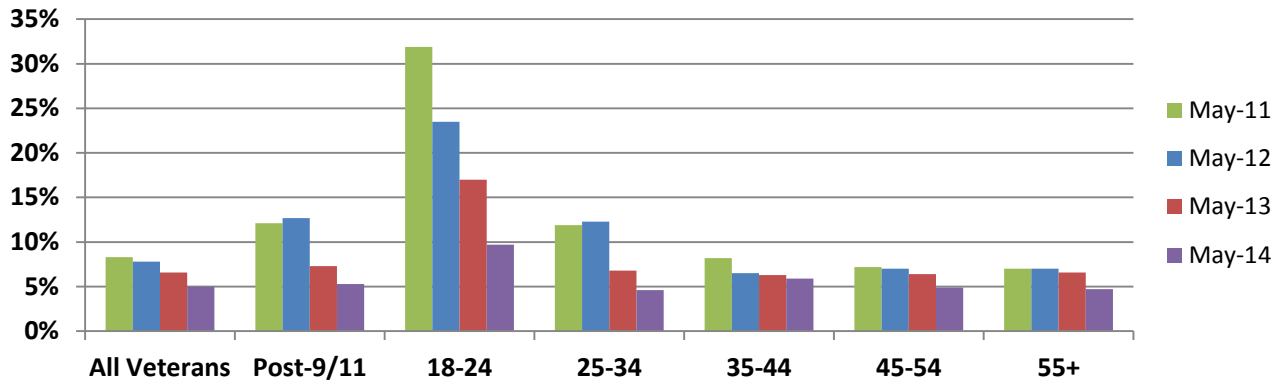
Highest Levels (39% of total)	Level	Highest Rates	Rate
Florida	63,000	Maryland	12.3%
California	56,000	Maine	9.3%*
Texas	37,000	Alaska	9%*
Illinois	28,000	Oklahoma	8.1%
North Carolina	27,000	IL & MT	7.9%

\*Does not meet BLS Publication Criteria

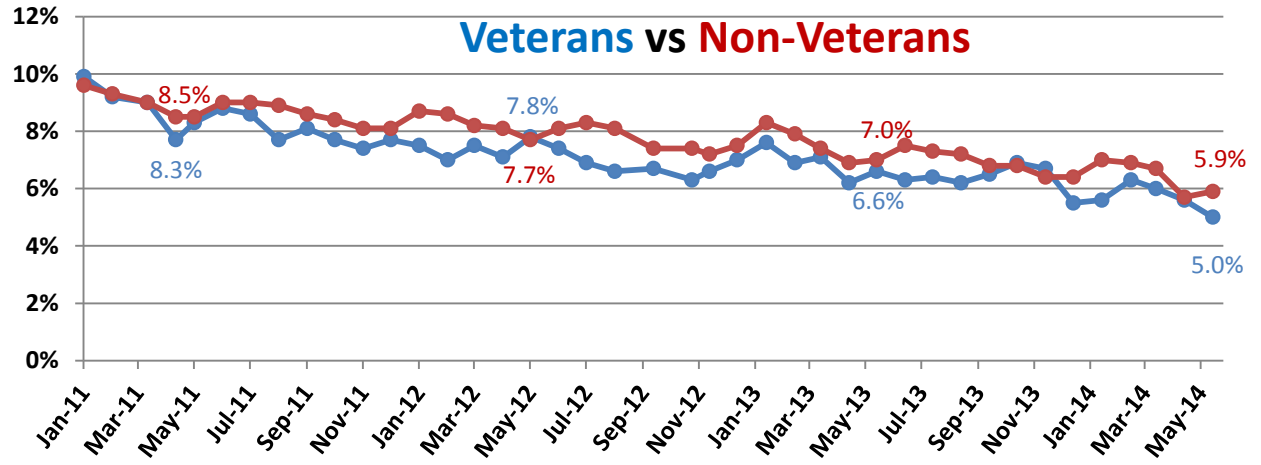
#### Employment Sectors

Sector	+/-	Sector	+/-
Professional/Business	55,000	Wholesale Trade	Even
Healthcare	55,000	Mining	Even
Transportation/Warehousing	16,000	Government	Even
Retail	Even	Financial	Even
Construction	Even	Manufacturing	Even

## Year-Over-Year Comparison



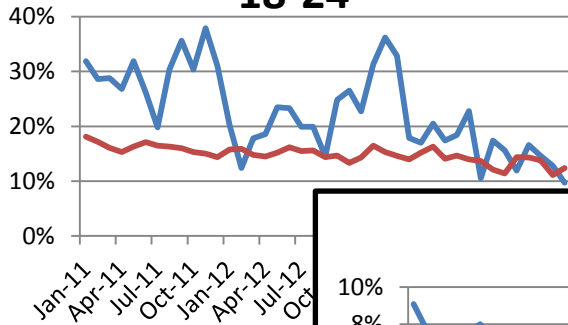
## Veterans vs Non-Veterans



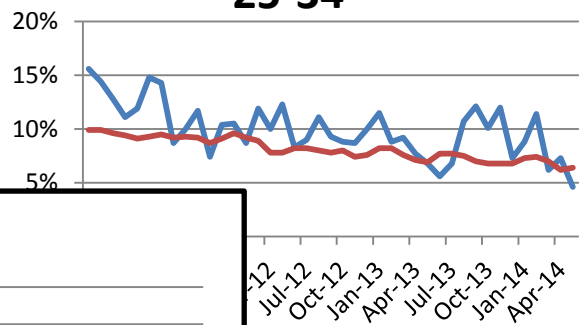
Vets / Non-Vets

Vets / Non-Vets

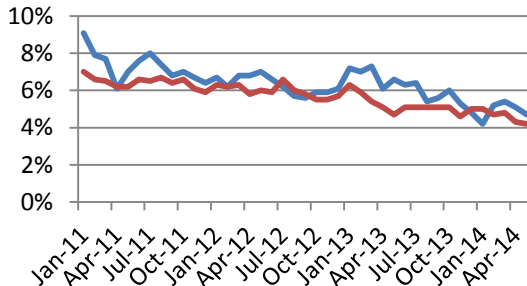
### 18-24



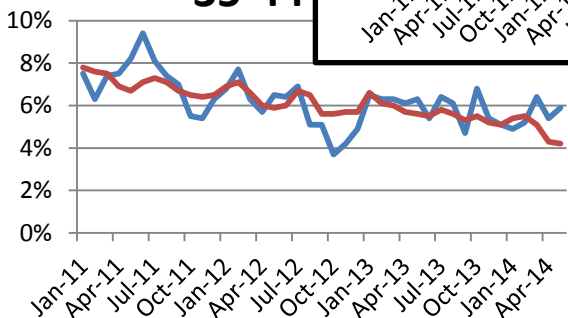
### 25-34



### 55+



### 35-44



### 45-54

