



## Employment Facts and Statistics

Office of Economic Opportunity  
Veterans Benefits Administration  
BLS Figures (non-seasonally adjusted)

### 1st Quarter 2014

#### Unemployment

Cohort (% of total)	Rate	Change	Level	Change	Non-Vets
<b>All Veterans (100%)</b>	<b>6.0%</b>	<b>-0.3%</b>	<b>644,000</b>	<b>-44,000</b>	<b>6.8%</b>
Male	6.2%	-0.2%	578,000	-20,000	7.4%
Female	4.6%	-1.7%	66,000	-24,000	6.3%
<b>Post-9/11 Veterans (30%)</b>	<b>8.0%</b>	<b>-1.1%</b>	<b>195,000</b>	<b>-27,000</b>	-
Male	8.1%	-1.3%	165,000	-19,000	-
Female	7.3%	-0.6%	30,000	-8,000	-
<b>18-24 Veterans (5%)</b>	<b>14.4%</b>	<b>0.2%</b>	<b>21,000</b>	<b>-1,000</b>	<b>14.2%</b>
Male	13.8%	-7.0%	14,000	-7,000	16.1%
Female*	16.0%	14.9%	7,000	6,000	12.1%
<b>25-34 Veterans (19%)</b>	<b>8.8%</b>	<b>-1.0%</b>	<b>123,000</b>	<b>-23,000</b>	<b>7.2%</b>
Male	9.2%	-0.5%	107,000	-9,000	7.5%
Female	6.7%	-3.7%	16,000	-14,000	6.9%
<b>35-44 Veterans (18%)</b>	<b>5.5%</b>	<b>-0.3%</b>	<b>118,000</b>	<b>-1,000</b>	<b>5.5%</b>
Male	5.5%	-0.8%	94,000	-14,000	5.7%
Female	5.7%	2.5%	23,000	12,000	5.2%
<b>45-54 Veterans (26%)</b>	<b>6.0%</b>	<b>0.0%</b>	<b>166,000</b>	<b>-1,000</b>	<b>5.3%</b>
Male	6.6%	1.0%	156,000	26,000	5.6%
Female	2.5%	-5.7%	10,000	-27,000	5.0%
<b>55+ Veterans (34%)</b>	<b>4.9%</b>	<b>-0.5%</b>	<b>217,000</b>	<b>-17,000</b>	<b>4.8%</b>
Male	5.1%	-0.4%	207,000	-16,000	5.1%
Female	2.9%	-0.8%	10,000	-1,000	4.6%

\* Does not meet BLS publication criteria

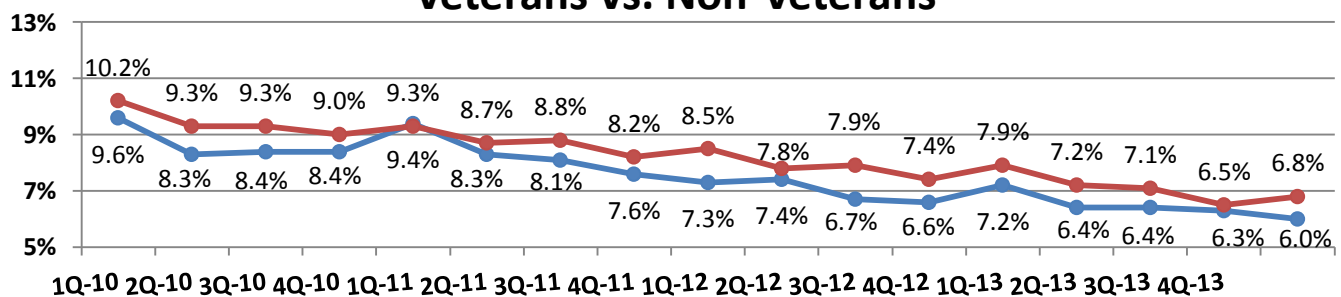
- 53,000 (12%) of all 18-54 Veterans (428,000) are enrolled in school either part time or full time

#### Unemployment by State

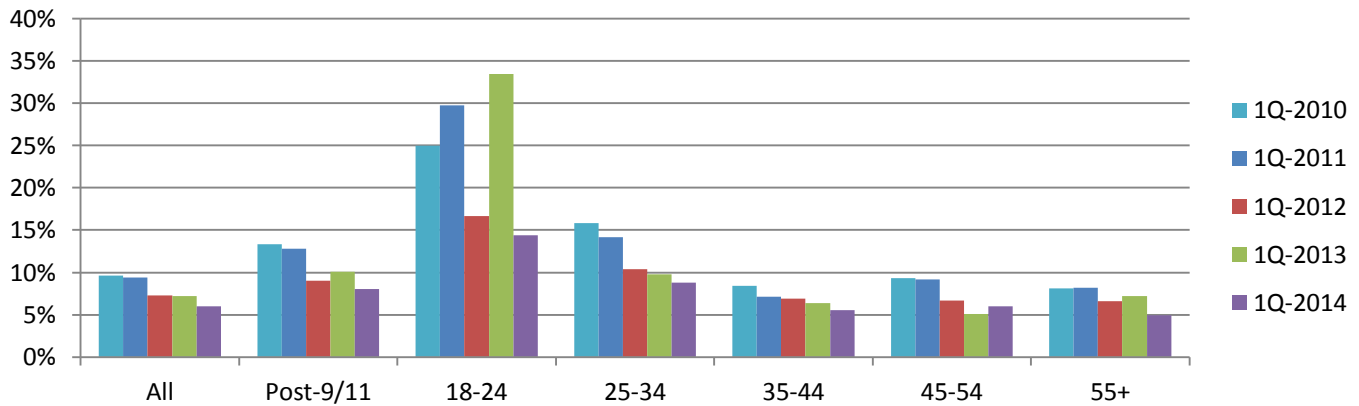
Highest Levels (29% of total)	Level	Highest Rates	Rate
California	66,000	Kentucky	10.8%
Georgia	37,000	West Virginia*	8.8%
Florida	34,000	Wisconsin	8.8%
Illinois	32,000	Illinois	8.7%
Texas	32,000	Alabama	8.6%

\* Does not meet BLS publication criteria

### Veterans vs. Non-Veterans

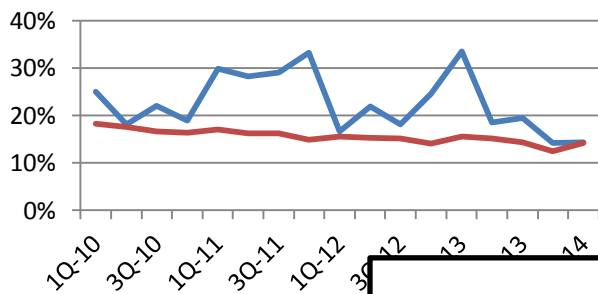


## Year-Over-Year Comparison Veteran Unemployment



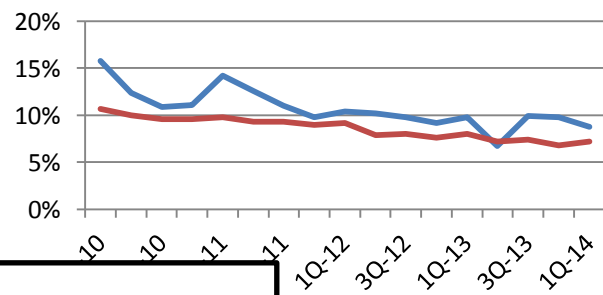
Vets/Non-Vets

**18-24**

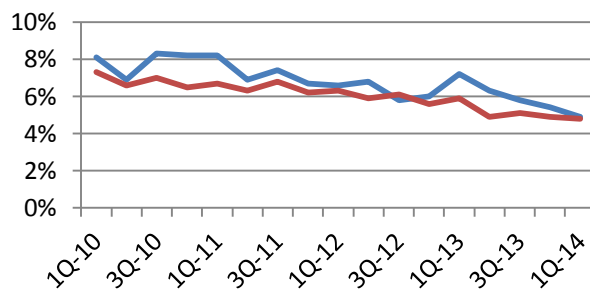


Vets/Non-Vets

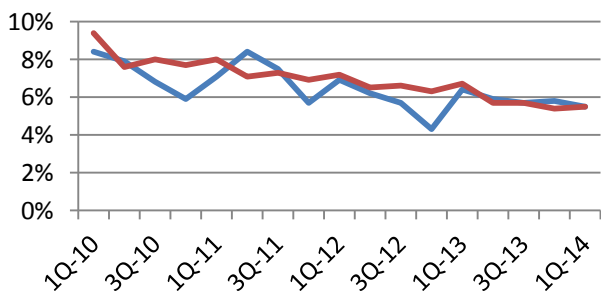
**25-34**



**55+**



**35-44**



**45-54**

