



# **FEMA**

## **Daily Operations Briefing**

**Sunday, January 3, 2016**

**8:30 a.m. EST**

# Significant Activity: Jan 2 – 3



## **Significant Events:**

- Flooding – Central U.S.

## **Significant Weather:**

- Flood Warnings Continue – Middle/Lower Mississippi Valleys
- Snow – Northern Intermountain, Northern California, Central Great Basin, Great Lakes and Northeast
- Rain – Pacific Northwest, Northern California, Southern Plains, Lower Mississippi Valley and Southeast
- Rain and Snow – Pacific Northwest and Northern California
- Red Flag Warnings: None; Elevated Fire Weather conditions: Southern California
- Space Weather: Past 24 hours – Minor with S1 Solar radiation storms occurred; Next 24 hours – Moderate with G2 Geomagnetic storms and S1 Solar radiation storms are likely

## **Declaration Activity:**

- FEMA-3374-EM-MO Approved on Jan 2

# Flooding – Central U.S.



## Situation:

Major flooding continues, and is forecast to persist into next week, for portions of the Mississippi, Illinois, Ohio and Arkansas Rivers. Many river gauges of concern have crested; however, areas remain threatened by weak, but stable levees.

The latest NWS forecast indicates no significant, widespread precipitation expected across this region through Tuesday. Another storm system is projected to produce moderate precipitation from eastern Texas through the Lower Mississippi Valley on Wednesday into Thursday; NWS does not project significant impact on river forecasts in the area. Massive cleanup and recovery efforts have begun in Illinois and Missouri.



**Cape Girardeau sandbagging efforts**  
Source: [www.twitter.com](http://www.twitter.com)

## Impacts:

### Illinois

- IL EOC at Partial Activation
- Governor declared State of Emergency Dec 29 (12 counties)
- IL NG soldiers/air assets activated
- 9 fatalities (1-unconfirmed; 8-confirmed)
- Levee monitoring continues along the Mississippi and Illinois Rivers
- East Cape Girardeau and Grand Tower levees are holding and the river has crested at Thebes, Cape Girardeau, and Murphysboro
- Evacuations are ongoing for the following counties: Alexander, Iroquois, Jackson, LaSalle, Lawrence and Watseka
- Multiple highways remain closed

### Tennessee

- TN EOC at Partial Activation
- Mississippi River reached its 34-foot flood stage in Memphis on Jan 02
- Memphis preparing for Mississippi River crest; flood warning issued

### Missouri

- POTUS approved Emergency Declaration (FEMA-3374-EM)
- EOC at Full Activation
- MO NG personnel activated; set up 2 water purification systems in Jefferson County
- Boil water advisory still in effect for High Ridge
  - MO & IA NG continue to provide clean water to cities of High Ridge and Murphy, MO
- 7 Levees overtopped (1-intentional) and 19 others being monitored
- Approximately 107 roads remain closed due to flooding

### Mississippi

- EOC at Partial Activation
- Governor declared a State of Emergency Dec 30
- Governor requested a major disaster declaration for 5 counties
- Joint PDAs completed for IA (5 counties) and PA (3 counties)

# Flooding – FEMA Response



## Region IV:

- RRCC not activated; RWC at Watch/Steady State
- IMAT personnel identified and available

## Region V

- RWC at Enhanced Watch (day shift)
- IMAT personnel identified and available
- LNO deployed to IL EOC

## Region VI

- RRCC resumes Level III (Dayshift) activation Monday Jan 4; RWC at Enhanced Watch (Night Shift)
- LNOs deployed to NM (1), TX (2), OK (1), and AR (1) State EOCs
- IMAT Team 1 is available
- IMAT Team 2 remains deployed to Austin, TX for previous declarations
- ESF 3 TL deployed to Regional Office

## Region VII

- RRCC activated to Level III (24/7); RWC returned to Watch/Steady State
- LNO deployed to MO EOC
- IMAT is deployed to MO to support FEMA-4238-DR-MO

## Headquarters

- NWC at Watch/Steady State (24/7)
- ISB Team (6 personnel) deployed to Norman, OK
  - 30 generators staged in Norman, OK



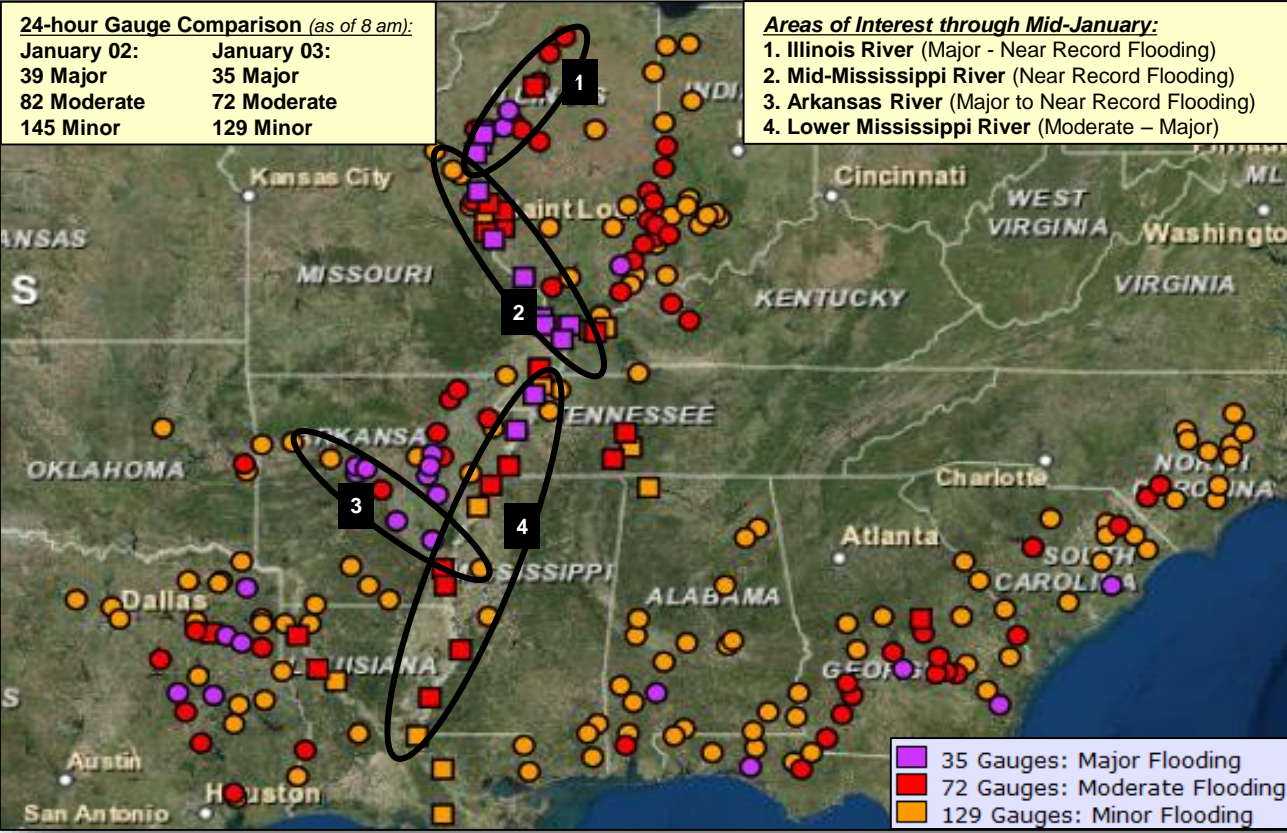
Illinois sandbag efforts Source: America.Aljazeera.com

# River Flood Forecast – National

**24-hour Gauge Comparison (as of 8 am):**

January 02:	January 03:
39 Major	35 Major
82 Moderate	72 Moderate
145 Minor	129 Minor

- Areas of Interest through Mid-January:**
1. Illinois River (Major - Near Record Flooding)
  2. Mid-Mississippi River (Near Record Flooding)
  3. Arkansas River (Major to Near Record Flooding)
  4. Lower Mississippi River (Moderate – Major)



Mississippi River Forecast Gauge	Estimated Peak Crest	Estimated Peak Flood Stage
Memphis, TN	Late Next Week	Moderate
Tunica Park, MS	Late Next Week	Near Major
Arkansas City, AR	Week of Jan 10	Major
Greenville, MS	Week of Jan 10	Major
Vicksburg, MS	Week of Jan 10	Major
Natchez, MS	Week of Jan 17	Major
Red River Landing, LA	Week of Jan 17	Moderate
Baton Rouge, LA	Week of Jan 17	Major
Donaldsonville, LA	Week of Jan 17	Moderate

# River Overview



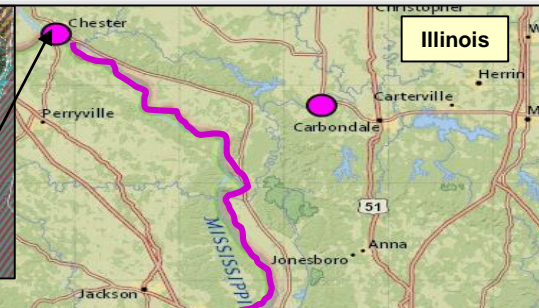
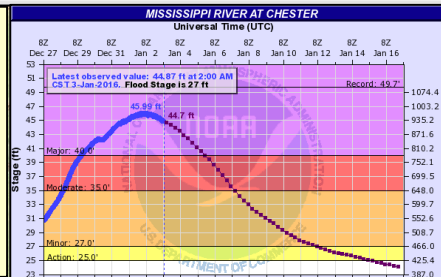
Forecast Gauge	Forecast Crest	Major Flood Stage	Estimated Peak Crest	Potential Impacts
Illinois River at Beardstown, IL	29.0	28.0	Sunday Night	Coal Creek Levee overtops at boat landing. Damage begins at Frederick and Browning
Illinois River at Meredosia, IL	27.9	24.0	Tuesday or Wednesday	Flood fighting begins at several locations; Floodwaters overtop Little Creek Levee; Damage begins to buildings in Meredosia
Illinois River at Valley City, IL	25.8	23.0	Tuesday	Buildings in Montezuma are flooded
Ohio River at Grand Chain Lock and Dam, IL	55.5	53.0	Monday	Water reached the power house at Lock and Dam 53
Mississippi River at Chester, IL	46.0	40.0	Just Past Crest	Backwater flooding likely along Kaskaskia River at Baldwin and Evansville, IL
Mississippi River at Cape Girardeau, MO	48.9	42.0	Just Past Crest	Record Flooding; Homes and structures in southern Cape Girardeau are flooded with evacuations required
Mississippi River at Thebes, IL	47.8	42.0	Just Past Highest Crest	Record Flooding; Towns of Thebes and Gale begin to flood
Mississippi River at Caruthersville, MO	43.0	43.0	Monday Night	In Tennessee, the north end of the Dyer County Farmer Levee is topped; All businesses and homes protected by the levee is flooded
Mississippi River at Osceola, AR	41.0	35.0	Wednesday	In Tennessee, houses are flooded
Arkansas River at Pine Bluff, AR	46.5	45.0	Sunday	Residences in Inland Harbour flooded
Arkansas River at Pendleton, AR	33.5	33.0	Monday	Near Record Flooding; Residences inside the levee just upstream of Pendleton Bridge are affected

# Mississippi River



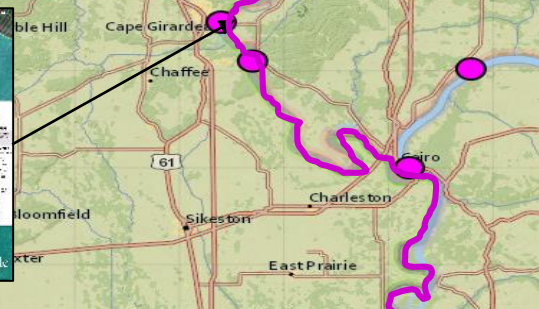
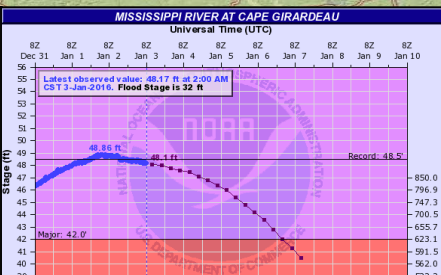
**Mississippi River:**  
**Chester Gauge (Record 49.7)**  
 Current level: **44.8'**

- Levees begin to overtop
- Railroad tracks & Baldwin Water Treatment Plant flooded; Hwy 155 & 51 closed **41 Housing units potentially impacted**



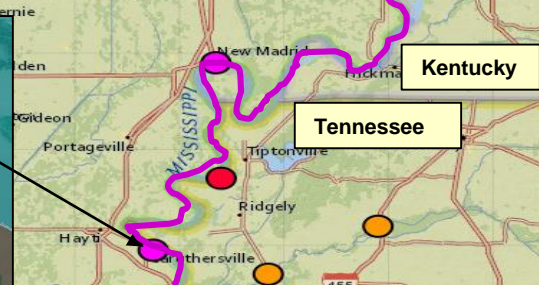
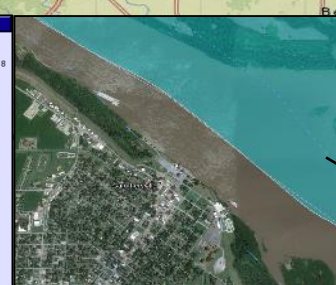
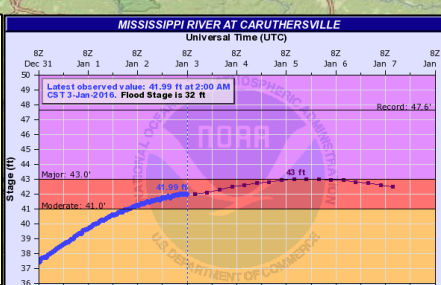
**Mississippi River:**  
**Cape Girardeau (Record 48.5)**  
 Current level: **48.17**

- 124 homes East of River Flood
- Several homes/structures in southern portions of County cut off by backwater flooding
- Numerous roads closed

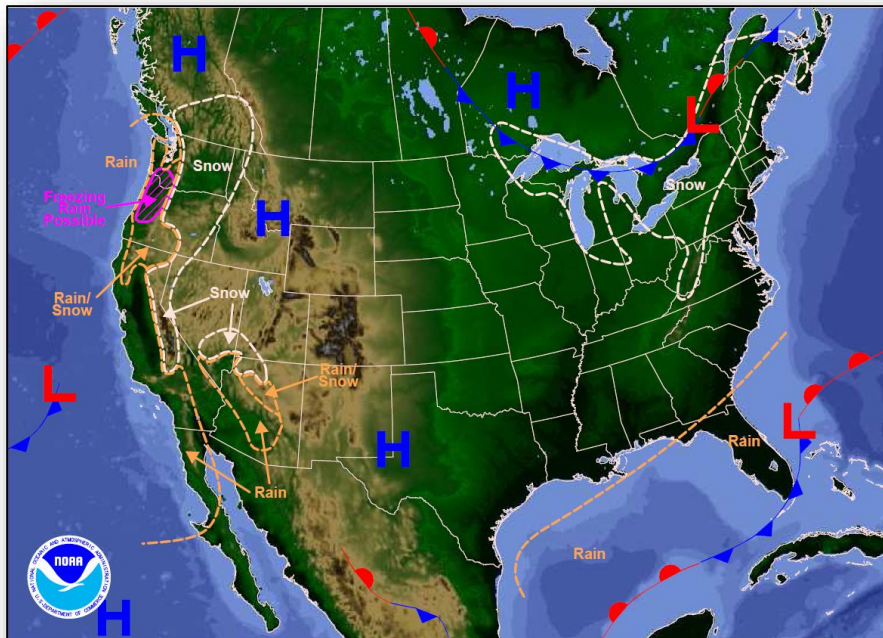


**Mississippi River:**  
**Caruthersville (Record 47.6)**  
 Current Level: **41.99**  
 Forecast Peak **43 (Jan 5)**

- At 43' levees topped at many locations
- Businesses, homes and farms by the Farmer Levee flood

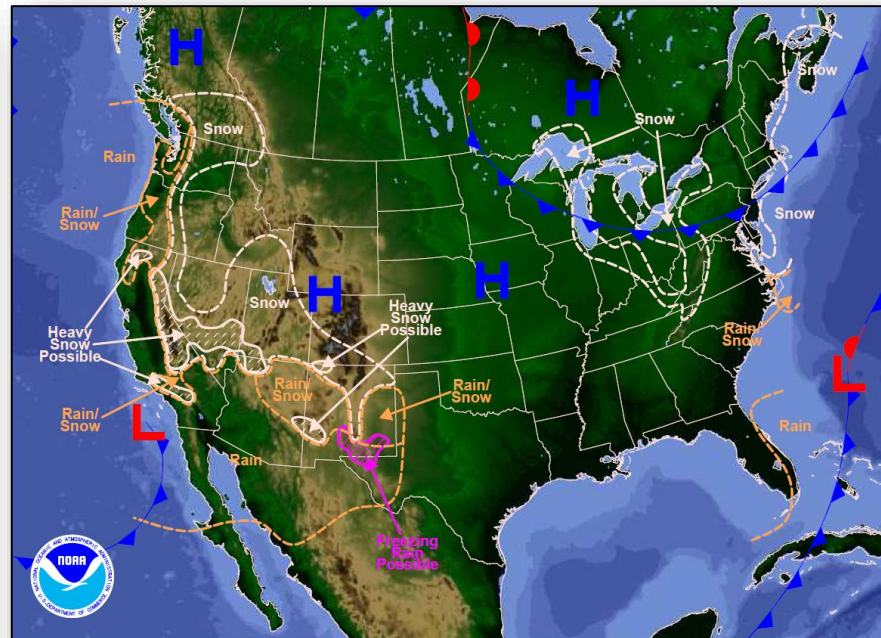


# National Weather Forecast



Weather Forecast for Sun, Jan 03, 2016, issued 3:46 AM EST  
DOC/NOAA/NWS/NCEP/Weather Prediction Center  
Prepared by Santorelli based on WFC, SFC and NHC forecasts

*Today*

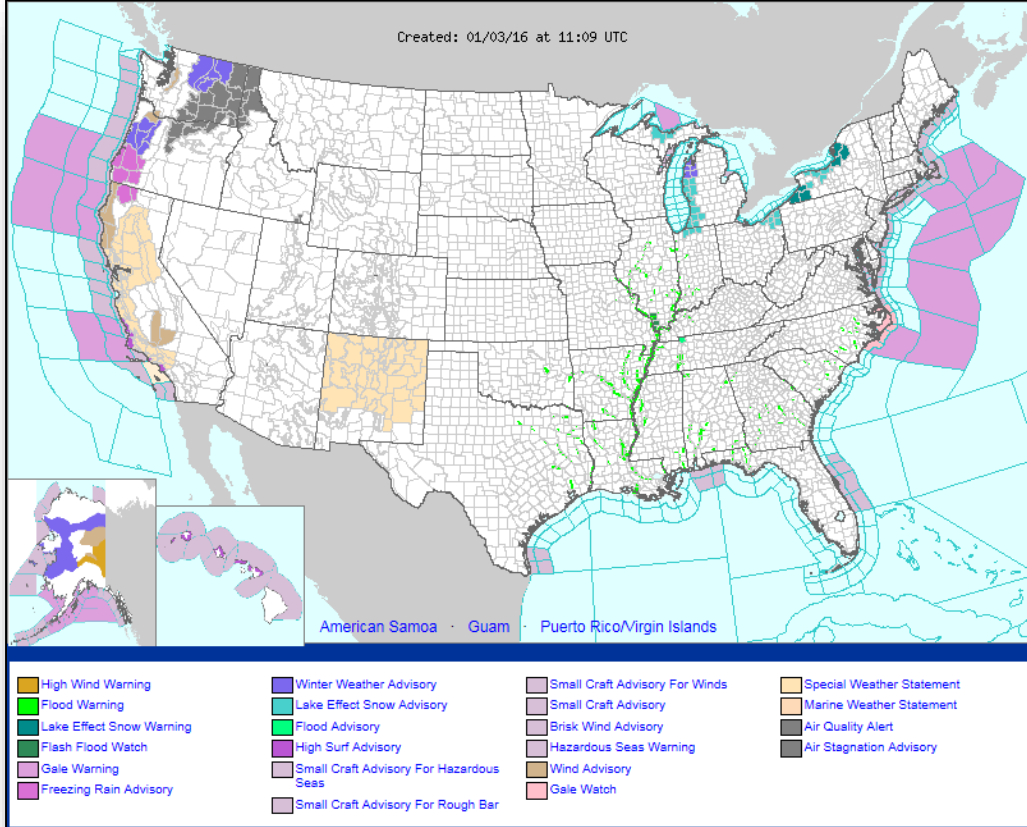


Weather Forecast for Mon, Jan 04, 2016, issued 3:50 AM EST Sun, Jan 03, 2016  
DOC/NOAA/NWS/NCEP/Weather Prediction Center  
Prepared by Santorelli based on WFC, SFC and NHC forecasts

*Tomorrow*



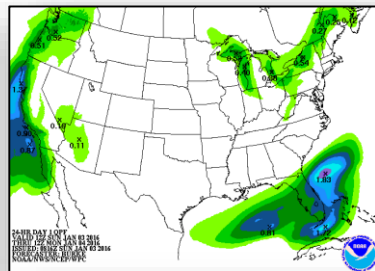
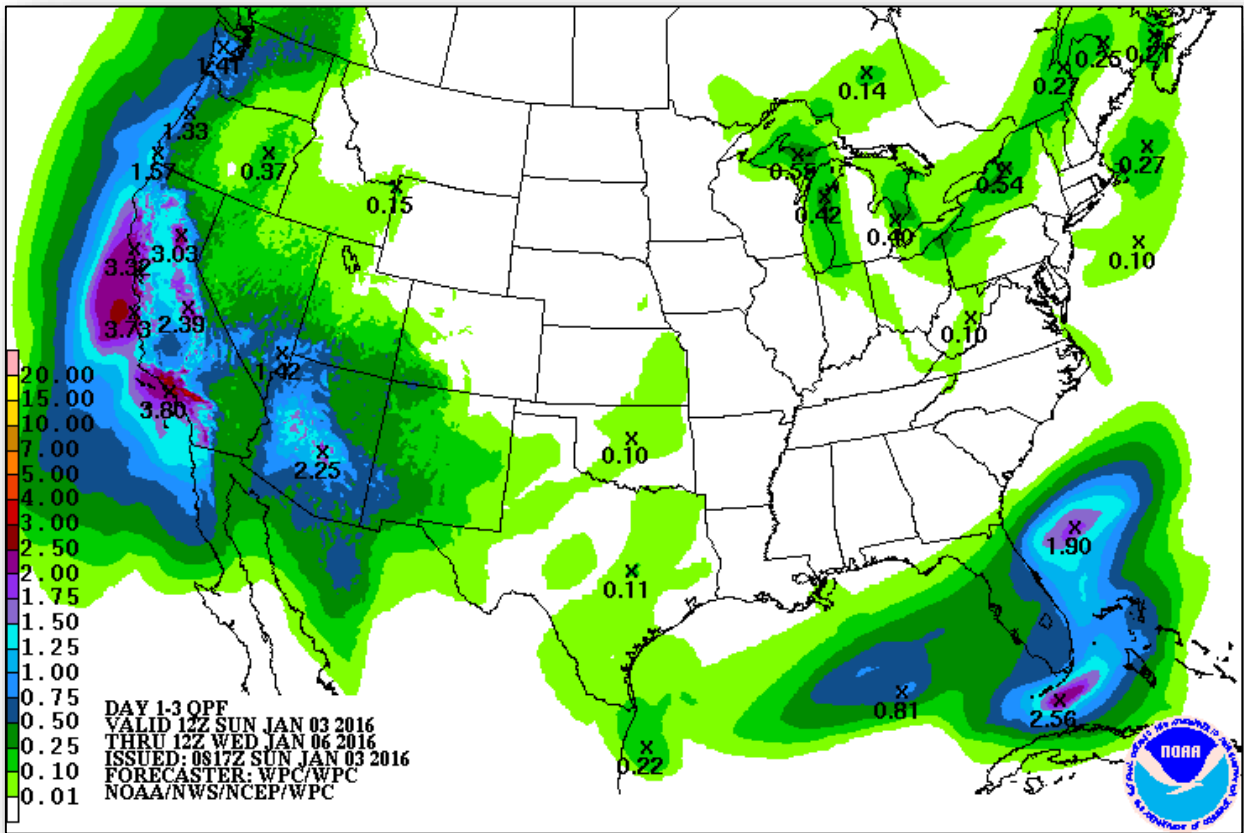
# Active Watches/Warnings



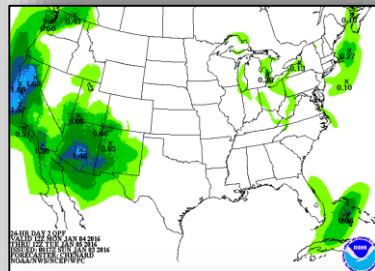
# Precipitation Forecast, 1-3 Day



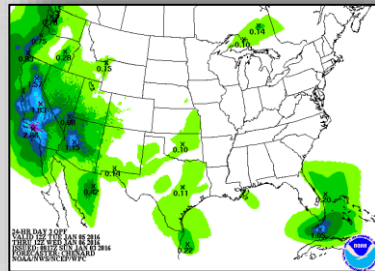
FEMA



Day 1



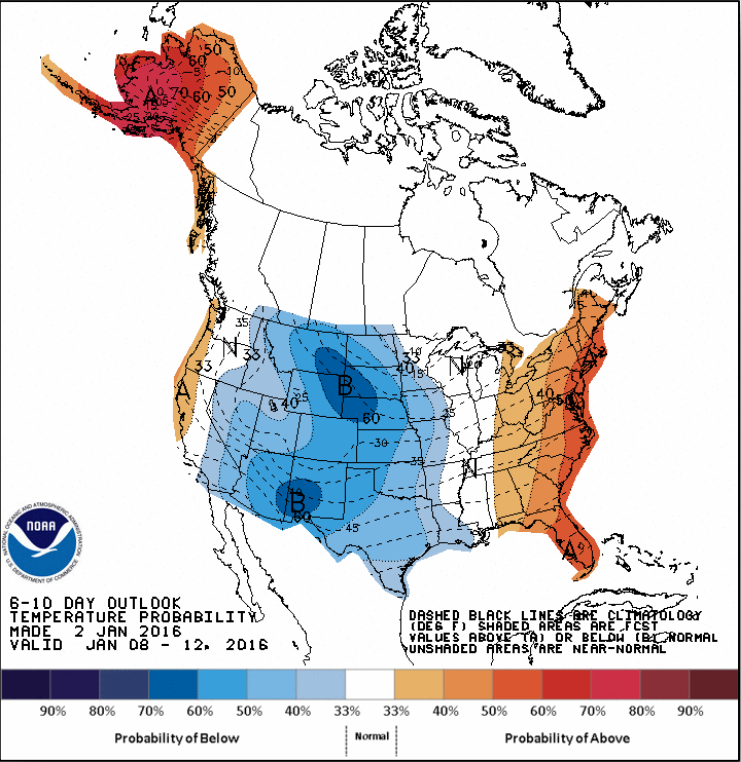
Day 2



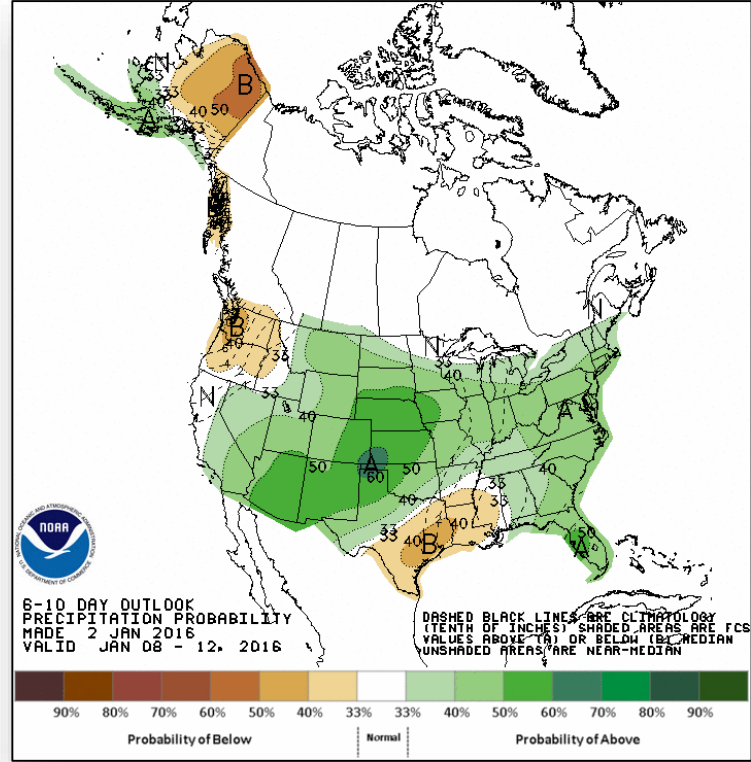
Day 3



# 6-10 Day Outlooks



**Temperature Probability**

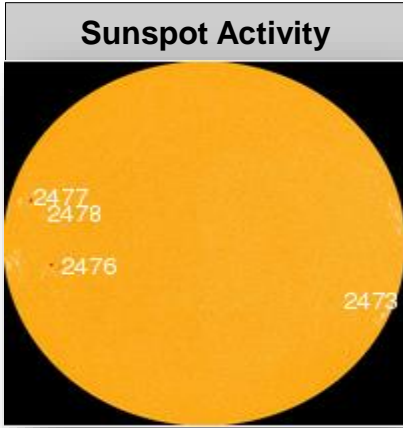
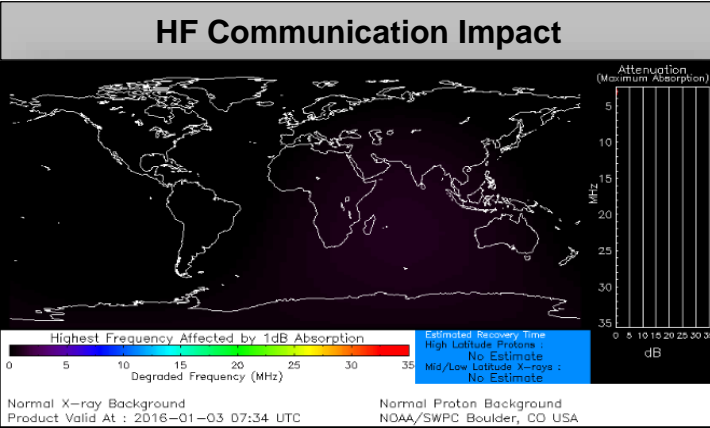


**Precipitation Probability**

# Space Weather



	Past 24 Hours	Current	Next 24 Hours
Space Weather Activity	Minor	None	Moderate
Geomagnetic Storms	None	None	G2
Solar Radiation Storms	S1	None	S1
Radio Blackouts	None	None	None



# Disaster Requests & Declarations



Declaration Requests in Process		Requests APPROVED (since last report)	Requests DENIED (since last report)
1	Date Requested	1	0
MS – DR – Severe Storms, Tornadoes, Straight-line winds and Flooding	December 31, 2015		
MO – EM – Severe Storms, Tornadoes, Straight-line winds and Flooding		January 2, 2016	

# Emergency Declaration – MO



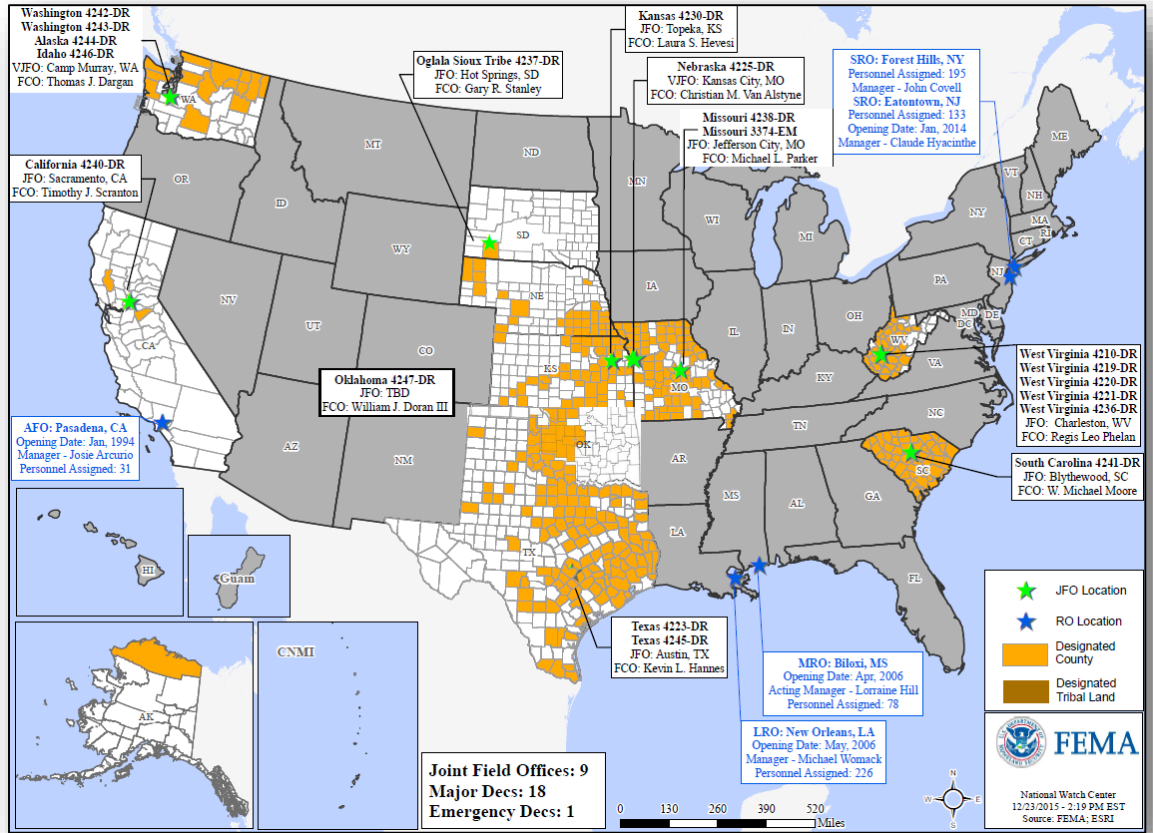
## FEMA-3374-EM-MO

- Emergency Declaration for State of Missouri approved Jan 02
- For Severe Storms, Tornadoes, Straight-line Winds, and Flooding during the period of December 22, 2015 and continuing
- Provides:
  - Debris removal and emergency protective measures (Cat A & B) limited to direct federal assistance under Public Assistance Program at 75% federal funding for 73 counties and the Independent City of St. Louis



- Counties approved for PA
- ★ Independent City of St. Louis approved for PA

# Open Field Offices as of January 3



# Joint Preliminary Damage Assessments



Region	State / Location	Event	IA/PA	Number of Counties		Start – End
				Requested	Complete	
IV	AL	Severe Weather & Flooding December 23, 2015 – continuing	PA	34	0	1/7 – TBD
VI	TX	Severe Weather & Tornadoes December 26, 2015 – continuing	IA	3	0	12/30 – TBD
VI	OK	Severe Weather & Tornadoes December 26, 2015 - continuing	IA	32	0	1/5 – TBD
VI	AR	Severe Weather & Flooding December 26, 2015 - continuing	PA	38	0	1/6 – TBD
X	WA	Severe Wind Storm November 30, 2015 – continuing	IA	23	0	1/5 – TBD
			PA	23	0	1/11 – TBD



# FEMA Readiness – Deployable Teams /Assets



Deployable Teams/Assets									
Resource	Status	Total	FMC Available		Partially Available	Not Available	Detailed, Deployed, Activated	Comments	Rating Criterion
FCO	Yellow	39	21	54%	0	3	15	Only 2 Type1 FCOs are available	OFDC Readiness: FCO Green Yellow Red Type 1 3+ 2 1 Type 2 4+ 3 2 Type 3 4 3 2
FDRC	Green	8	3	38%	0	0	5		FDRC 3 2 1 • Green = Available/FMC • Yellow = Available/PMC • Red = Out-of-Service • Blue = Assigned/Deployed
US&R	Green	28	26	92%	1	1	0	MO-TF1 (Yellow) – State activated NM-TF1 (Red) - Personnel shortages	• Green: 3 avail • Yellow: 1-2 avail • Red: 0 avail ( <i>Individual N-IMAT red if 50% of Section Chiefs and/or Team Leader is unavailable for deployment.</i> )
National IMAT	Green	3	3	100	0	0	0		
Regional IMAT	Yellow	13	6	46%	1	1	5	<b>Deployed:</b> RVI (Team 2) Deployed to TX RVII Deployed to MO RVIII Deployed to OST, SD (Available to re-deploy as needed) RIX (Team 2) Deployed to CA RX Deployed to WA <b>PMC:</b> RIX (Team 1) Reconstituting from CNMI <b>NMC:</b> RV (Team 1) Red – Personnel Shortages	• Green: 7 or more avail • Yellow: 4 - 6 teams available • Red: > 8 teams deployed/unavailable <i>R-IMAT also red if TL Ops/Log Chief is unavailable &amp; has no qualified replacement</i>
MCOV	Yellow	59	41	69%	0	12	6	2 MCOVs deployed to SC (FEMA-4241-DR) 4 MCOVs deployed to TX (FEMA-4245-DR)	• Green = 80 – 100% avail • Yellow = 60 – 79% avail • Red = 59% or below avail • Readiness remains 95%

# FEMA Readiness – National/Regional Teams



National/Regional Teams									
Resource	Status	Total	FMC Available		Partially Available	Not Available	Status	Comments	Rating Criterion
NWC		5	5	100%	0	0	Not Activated	Watch/Steady State (24/7)	<ul style="list-style-type: none"> <li>• Green = FMC</li> <li>• Yellow = PMC</li> <li>• Red = NMC</li> </ul>
NRCC		2	344	89%	0	44	Not Activated		
HLT		1	N/A	N/A	0	0	Not Activated		
DEST							Not Activated		
RRCCs		10	10	100%	0	0	Activated	Region VI Level III (Return to Day shift only 8 am EST Jan 4) Region VII Level III (24/7) for severe weather/flooding	
RWCs/MOCs		10	10	100%	0	0	Activated	Region V Enhanced Watch (Day shift) Region VI Enhanced Watch (24/7) through weekend Region VII returned to Watch/Steady State (24/7)	



# FEMA

**FEMA's mission is to support our citizens and first responders to ensure that as a nation we work together to build, sustain, and improve our capability to prepare for, protect against, respond to, recover from, and mitigate all hazards.**