



# **FEMA**

## **Daily Operations Briefing**

**Friday, January 1, 2016**

**8:30 a.m. EST**

# Flooding – Central U.S.



## Situation:

- Major Flooding occurring or forecast on the Mississippi and Ohio Rivers with record flooding at several locations
- Floodwaters to move downstream over next couple of weeks with significant river flooding for lower Mississippi into mid-January
- Latest NWS forecasts indicate no significant, widespread precipitation through Wednesday

## Impacts:

- 27 Storm related fatalities since Dec 31 (no new fatalities) (as of 8:30 am EST)

## Region IV (Mississippi– Flooding)

- No significant impacts reported

## Region V (Illinois – Flooding/Freezing Rain)

- A temporary levee in Green County failed; up to 20 homes may be affected, no reported life/safety issues
- Several retention ponds in Granite City overtopped and water is encroaching upon some low-lying streets and residential areas; sandbagging ops underway
- Impact to homes and business remain unknown

## Region VI

### Texas (Severe Weather) (FINAL)

- NOAA confirmed 6 tornadoes impacted central/eastern TX the afternoon and evening of Saturday Dec. 27



**Cumulative Precipitation: 12/28-01/01**

## Region VII (Missouri– Flooding)

- Evacuations occurred in West Alton (near St Louis) (est. pop 522) due to an over topping levee
- Evacuations occurred in Valley Park due to flooding on the Meramec River
  - Meramec River has crested and is receding
- At least 302 roads have closed statewide
- High Ridge Water Treatment Plant (Jefferson County) inundated in flooding

# Flooding –FEMA Response



## Region IV:

### Mississippi

- MS EOC is Partially Activated
- Governor declared a State of Emergency
- Preliminary damage assessments are completed for Individual Assistance (5 counties) and Public Assistance (3 counties)

### Alabama

- AL EOC is at Normal Operations
- AL Governor declared State of Emergency (all counties)

### Kentucky

- KY EOC is at Partial Activation

### Tennessee

- TN EOC is at Partial Activation

## Region V

- RWC at Enhanced Watch
- IMAT personnel identified and available
- LNO deploying to IL EOC today

## Region VI

- RRCC activated to Level III (Dayshift); RWC at Enhanced Watch (Night Shift)
- LNOs deployed to NM (1), TX (2), OK (1), and AR (1) State EOCs
- IMAT Team 1 is available
- IMAT Team 2 remains deployed to Austin, TX for previous declarations

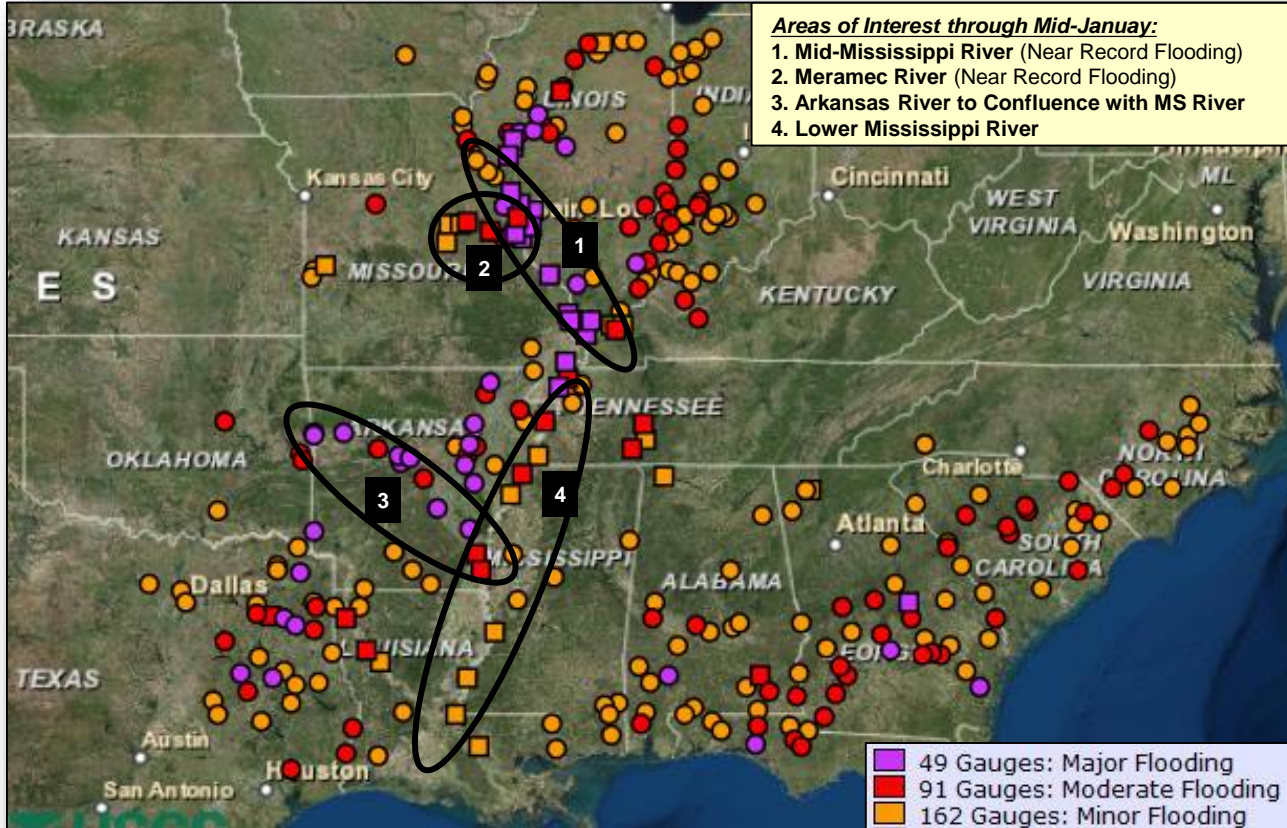
## Region VII

- RRCC activated to Level III (Dayshift); RWC is at Enhanced Watch (Nightshift)
- LNO deployed to MO State EOC
- IMAT is deployed to MO to support FEMA-4238-DR-MO

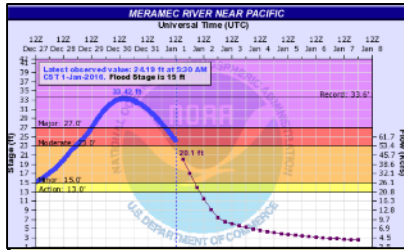
## Headquarters

- NWC at Watch/Steady State (24/7); transitioning to Enhanced Watch Jan 1 (9:00 am – 9:00 pm) for the Rose Bowl
- ISB Team (6 personnel) deployed to Norman, OK
  - 30 generators staged in Norman, OK

# River Flood Forecast – National

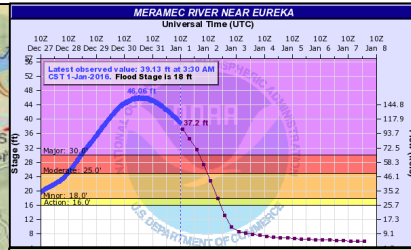


# Meramec River



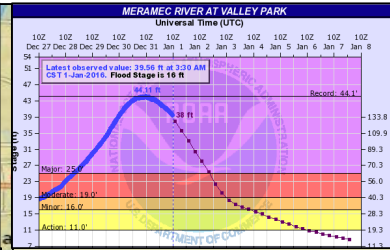
**Meramec River near Pacific, MO**  
**Observed Peak: 33.6'** Record: 33.6

River currently receding in this area



**Meramec River near Eureka, MO**  
**Observed Peak: 39.1'** Record: 42.9  
**At 34':**

Residential and small businesses are flooded near the river along with highway closures along the river.

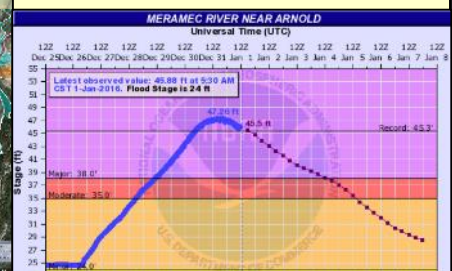
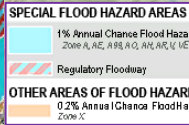
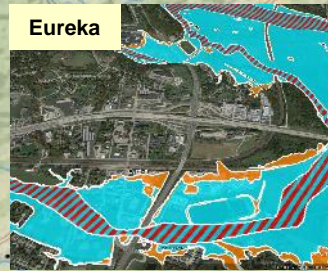


**Meramec River near Valley Park, MO**  
**Observed Peak: 39.6'** Record: 39.7  
**At 27':**

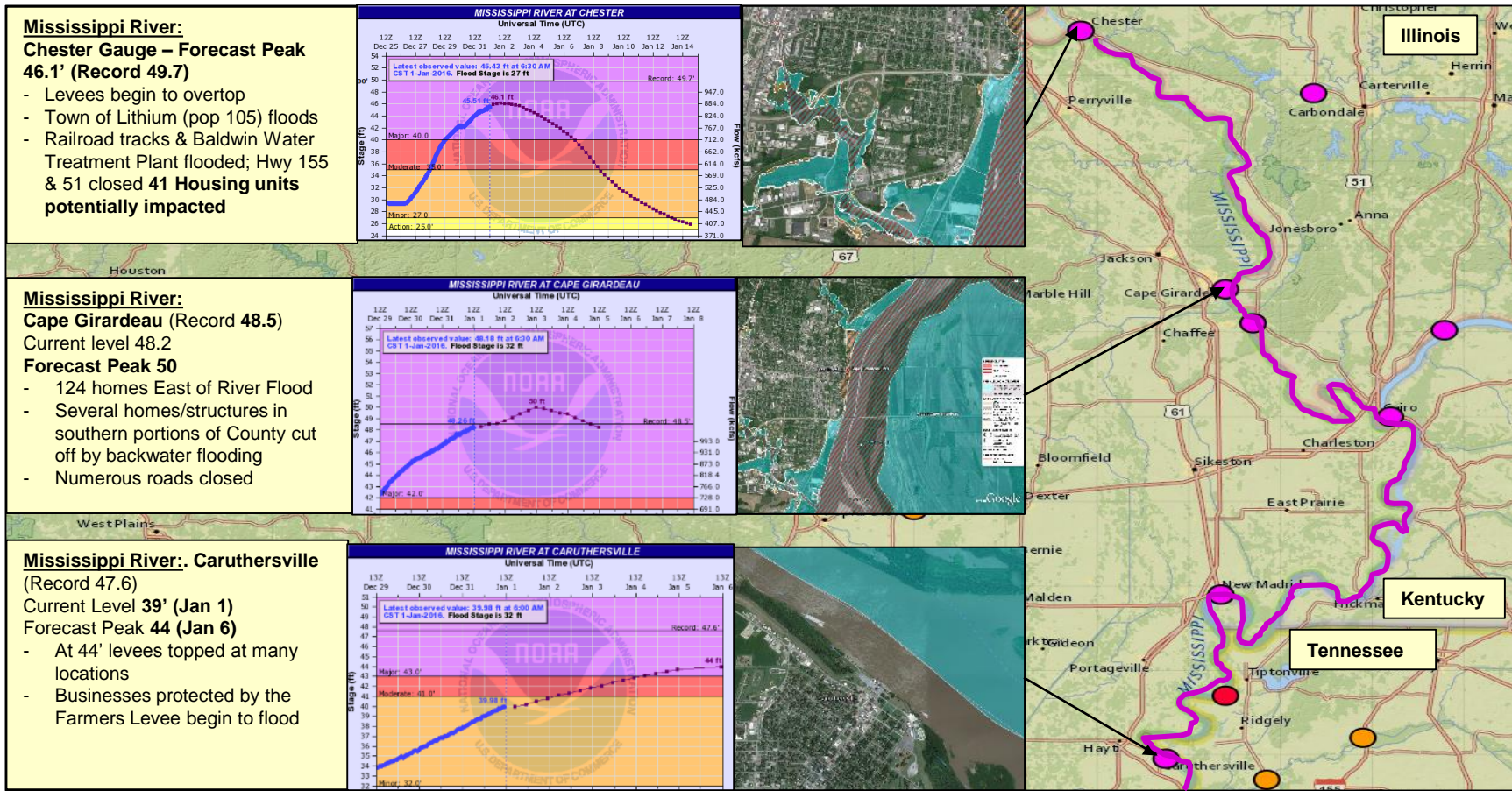
Main impact to the area are road closures to include highways. Some flooding to businesses and residences may occur.



**Meramec River near Arnold, MO**  
**Observed Peak: 47.2.'** Record: 47.2  
**At 45.5':**  
Record flooding continues to impact homes and businesses along the river in Arnold



# Mississippi River

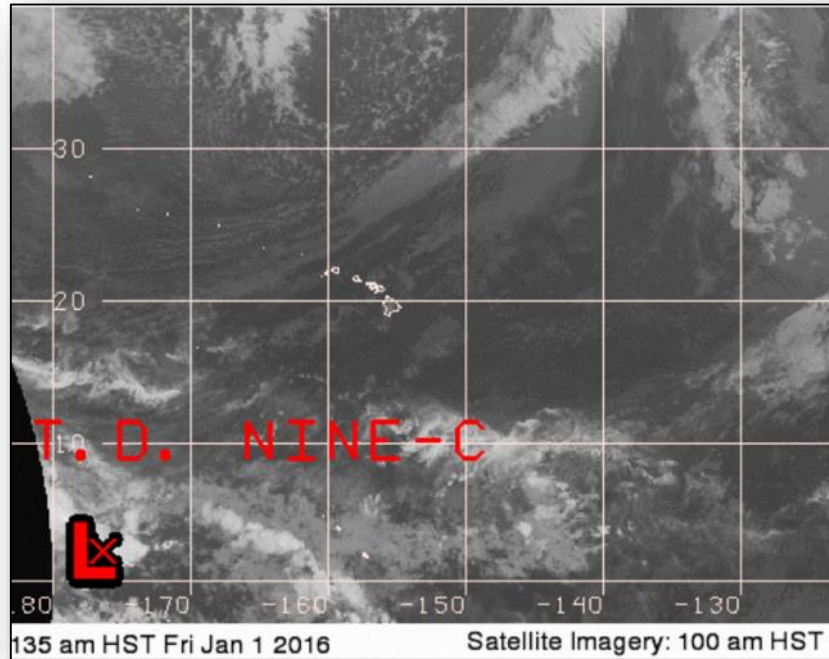


# Central Pacific – Tropical Depression 09C

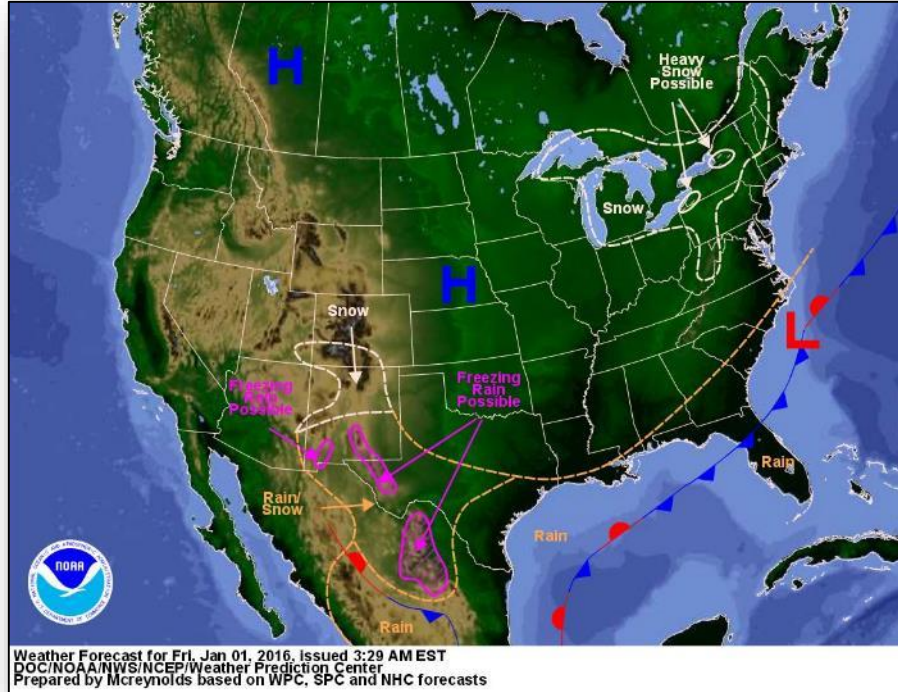


## Tropical Depression (09C) (*Warning #6 as of 6:30 am EST*)

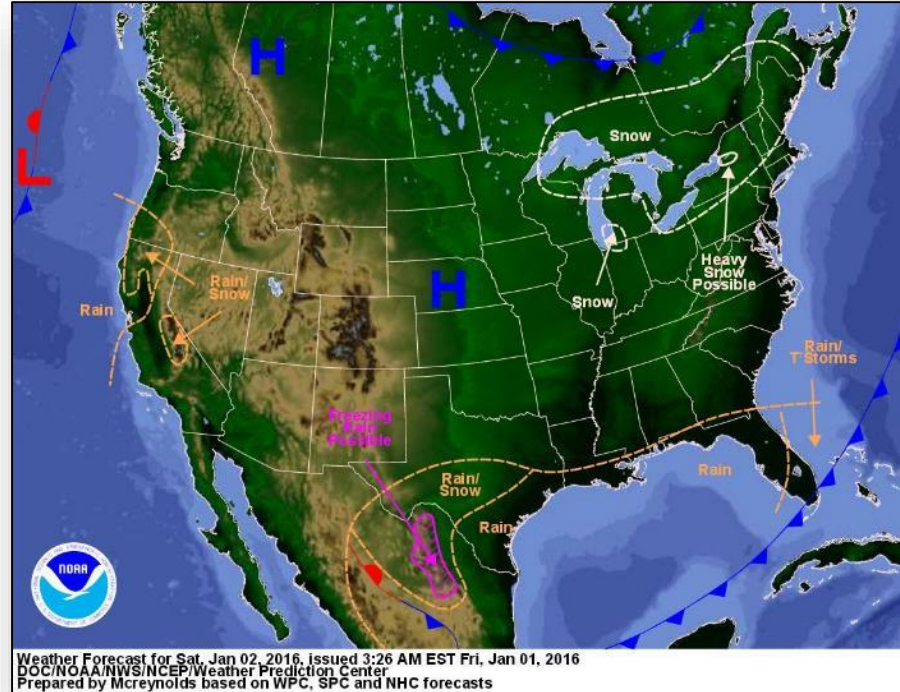
- 1,825 miles southwest of Honolulu; moving west at 2 mph
- Maximum sustained winds near 35 MPH
- Little change in intensity over next couple of days
- No anticipated threats to U.S. territories during the next 5 days



# National Weather Forecast

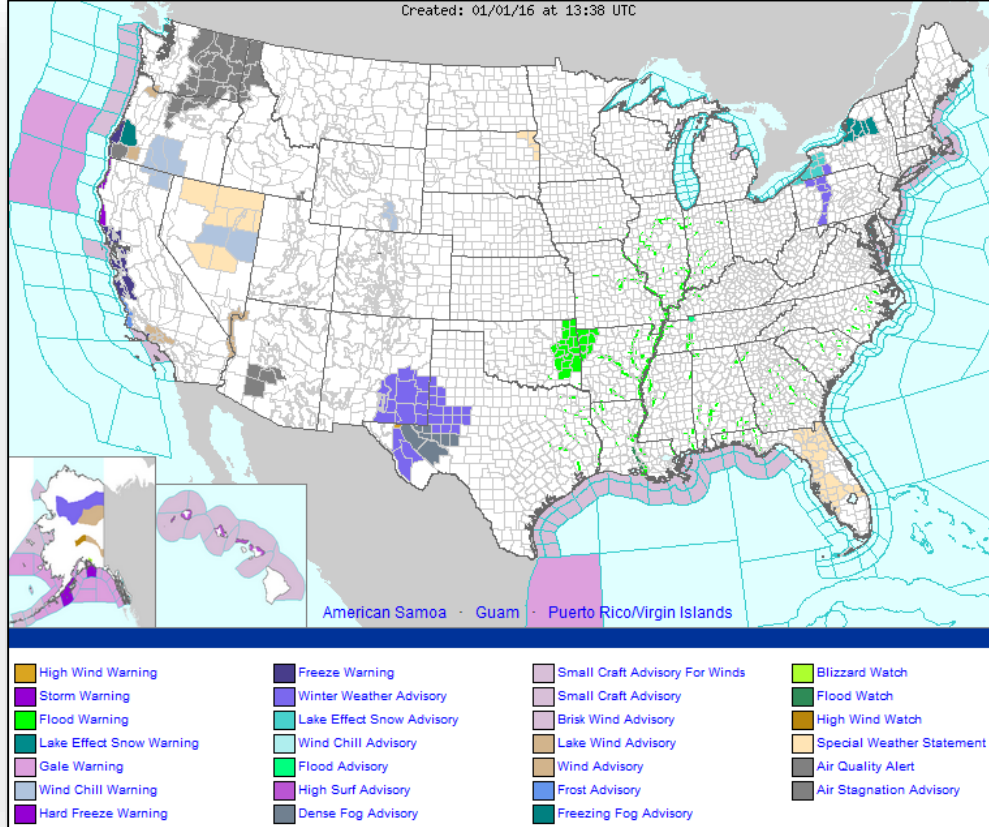


*Today*

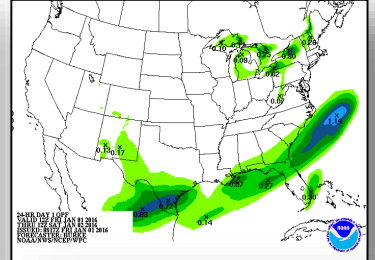
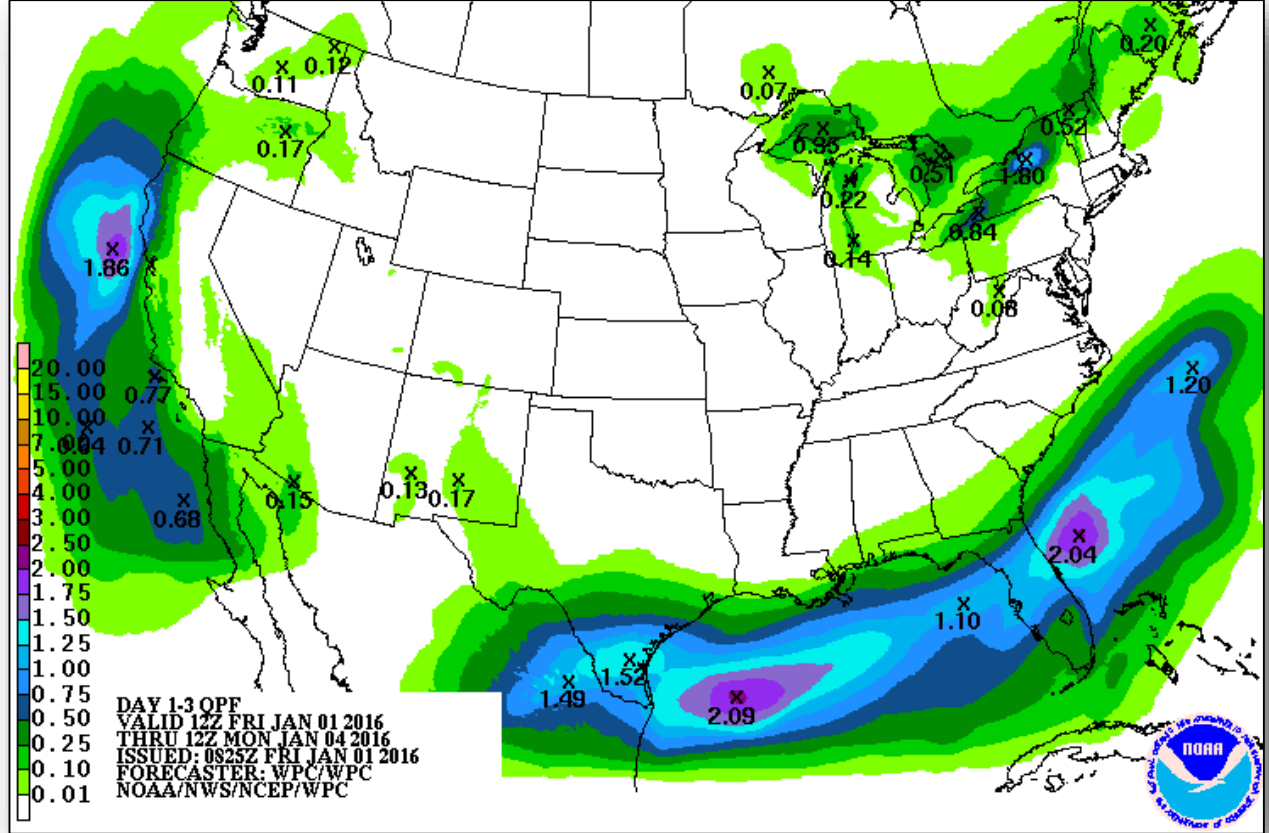


*Tomorrow*

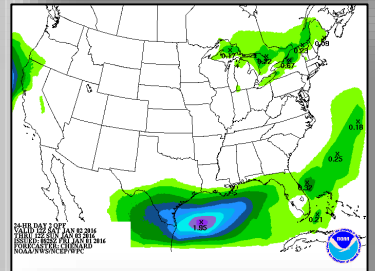
# Active Watches/Warnings



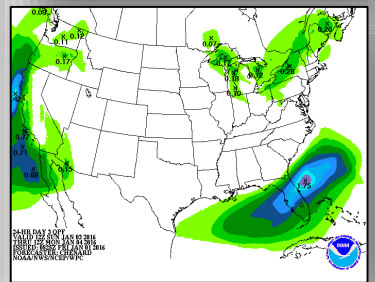
# Precipitation Forecast, 1-3 Day



Day 1

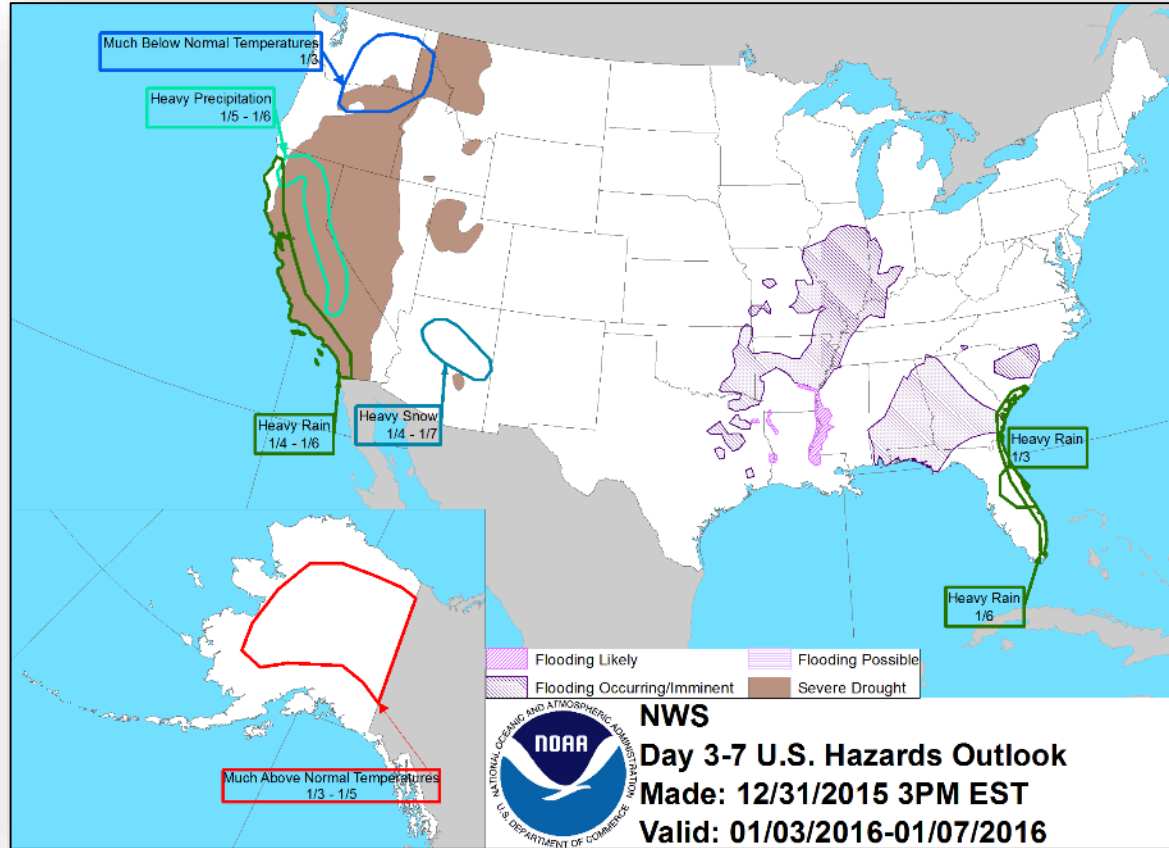


Day 2

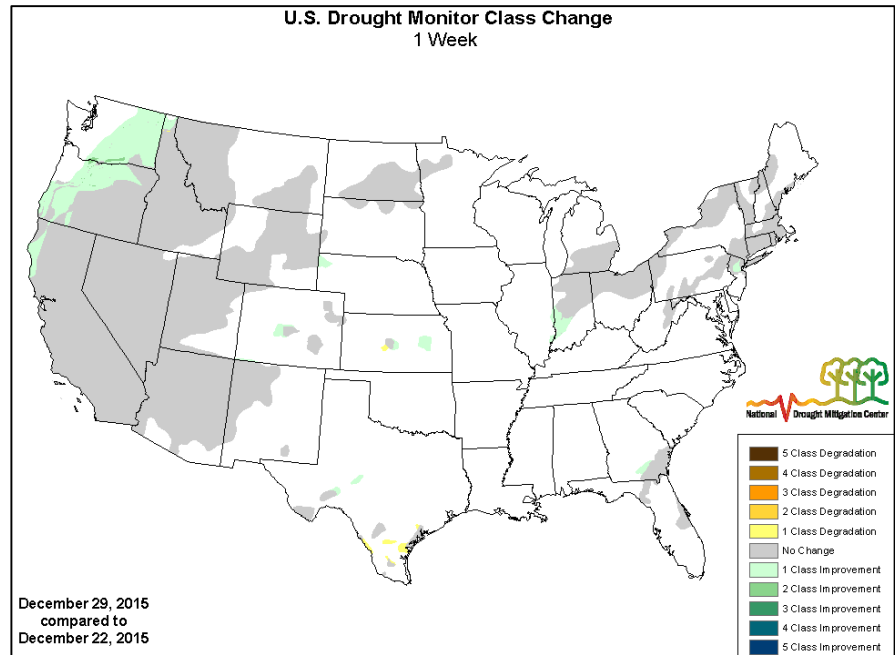
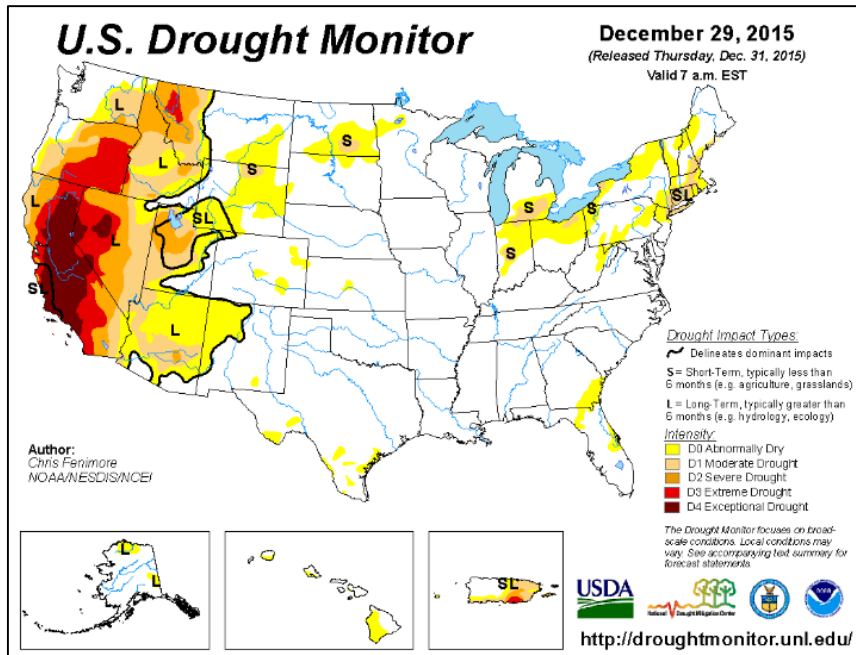


Day 3

# Hazard Outlook, Jan 3-7

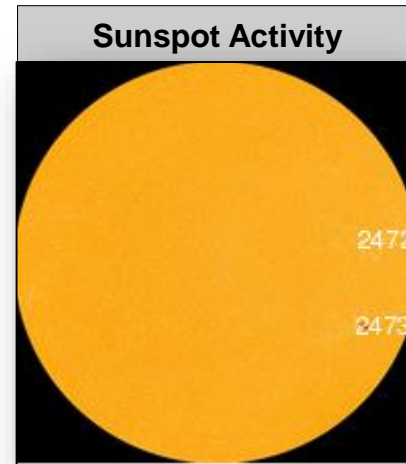
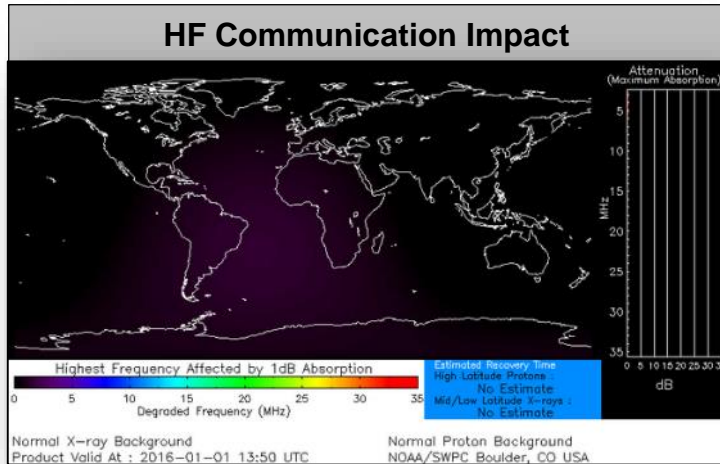


# U.S. Drought Monitor



# Space Weather

	Past 24 Hours	Current	Next 24 Hours
<b>Space Weather Activity</b>	Moderate	None	Minor
Geomagnetic Storms	G2	None	G1
Solar Radiation Storms	None	None	None
Radio Blackouts	None	None	None



# Major Disaster Declaration Request – MS

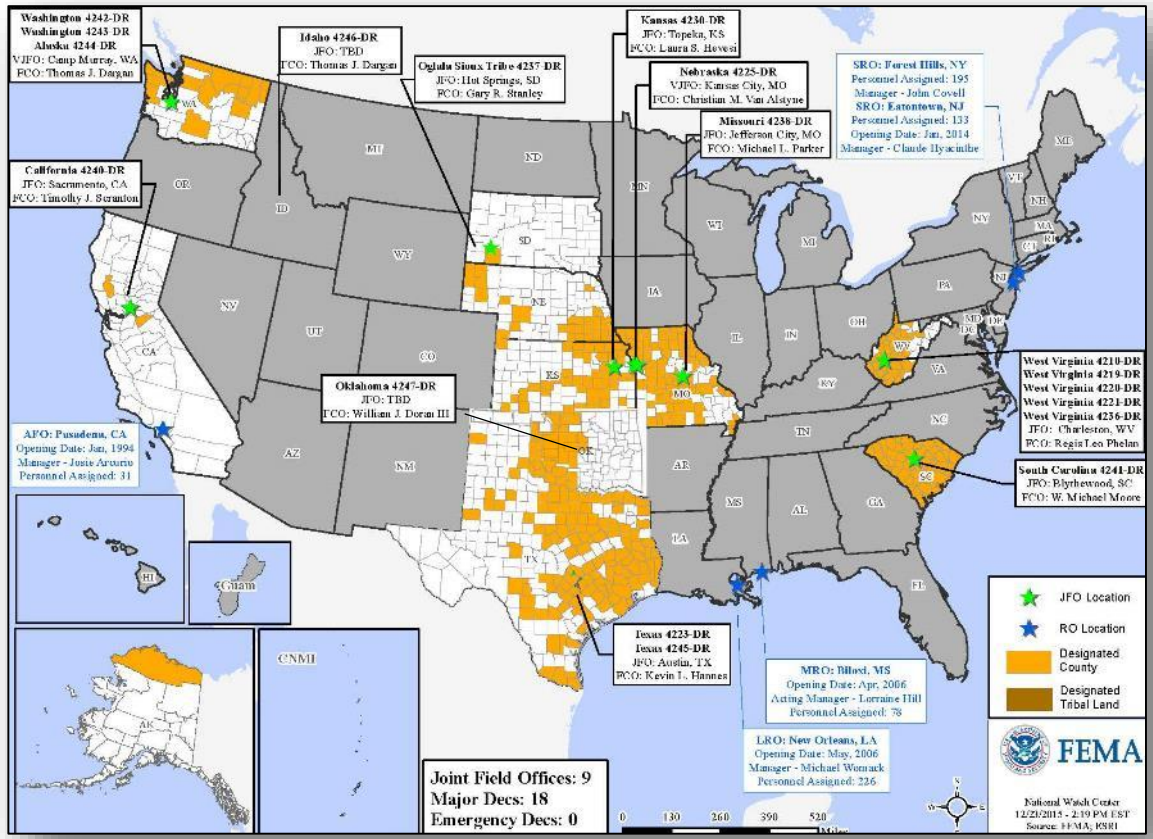


## December 31, 2015

- Governor requests Major Disaster Declaration for State of Mississippi
- For severe storms, tornadoes, straight-line winds, and flooding during the period of December 23-28, 2015
- Requesting:
  - Individual Assistance for five Counties
  - Public Assistance for three Counties
  - Hazard Mitigation statewide



# Open Field Offices as of January 1



# Joint Preliminary Damage Assessments



Region	State / Location	Event	IA/PA	Number of Counties		Start – End
				Requested	Complete	
IV	MS	Severe Weather & Flooding December 23, 2015 – continuing	IA	5	5 (+2)	12/28 – 12/31
			PA	3	3	12/28 – 12/30
VI	TX	Severe Storms December 26, 2015 – continuing	IA	3	0	12/30 – TBD
			PA	3	0	12/30 – TBD
X	WA	Wind Storm, Landslides, Mudslides, & Flooding December 1-14, 2015	IA	23	0	1/5 – TBD
			PA	23	0	1/11 – TBD

# FEMA Readiness – Deployable Teams /Assets



Deployable Teams/Assets									
Resource	Status	Total	FMC Available		Partially Available	Not Available	Detailed, Deployed, Activated	Comments	Rating Criterion
FCO	Yellow	39	21	54%	0	3	15	Only 2 Type1 FCOs are available	OFDC Readiness: FCO Green Yellow Red Type 1 3+ 2 1 Type 2 4+ 3 2 Type 3 4 3 2
FDRC	Green	8	3	38%	0	0	5		FDRC 3 2 1 • Green = Available/FMC • Yellow = Available/PMC • Red = Out-of-Service • Blue = Assigned/Deployed
US&R	Green	28	26	92%	1	1	0	MO-TF1 (Yellow) – State activated NM-TF1 (Red) - Personnel shortages	• Green: 3 avail • Yellow: 1-2 avail • Red: 0 avail ( <i>Individual N-IMAT red if 50% of Section Chiefs and/or Team Leader is unavailable for deployment.</i> )
National IMAT	Green	3	3	100	0	0	0		
Regional IMAT	Yellow	13	6	46%	1	1	5	<b>Deployed:</b> RVI (Team 2) Deployed to TX RVII Deployed to MO RVIII Deployed to OST, SD (Available to re-deploy as needed) RIX (Team 2) Deployed to CA RX Deployed to WA <b>PMC:</b> RIX (Team 1) Reconstituting from CNMI <b>NMC:</b> RV (Team 1) Red – Personnel Shortages	• Green: 7 or more avail • Yellow: 4 - 6 teams available • Red: > 8 teams deployed/unavailable R-IMAT also red if TL Ops/Log Chief is unavailable & has no qualified replacement
MCOV	Yellow	59	40	67%	0	12	7	3 MCOVs deployed to SC (FEMA-4241-DR) 4 MCOVs deployed to TX (FEMA-4245-DR)	• Green = 80 – 100% avail • Yellow = 60 – 79% avail • Red = 59% or below avail • Readiness remains 95%

# FEMA Readiness – National/Regional Teams



National/Regional Teams									
Resource	Status	Total	FMC Available		Partially Available	Not Available	Status	Comments	Rating Criterion
NWC		5	5	100%	0	0	Enhanced Watch	Rose Bowl 9 a.m. – 9 p.m.	<ul style="list-style-type: none"> <li>• Green = FMC</li> <li>• Yellow = PMC</li> <li>• Red = NMC</li> </ul>
NRCC		2	344	89%	0	44	Not Activated		
HLT		1	N/A	N/A	0	0	Not Activated		
DEST							Not Activated		
RRCCs		10	10	100%	0	0	Activated	Region VI Level III (Day shift) for severe weather/flooding Region VII Level III (Day shift) for severe weather/flooding	
RWCs/MOCs		10	10	100%	0	0	Activated	Region V Enhanced Watch (Day shift) Region VI Enhanced Watch (Night shift) Region VII Enhanced Watch (Night Shift) Region IX Enhanced Watch (9 a.m. – 9 p.m.)	



# FEMA

**FEMA's mission is to support our citizens and first responders to ensure that as a nation we work together to build, sustain, and improve our capability to prepare for, protect against, respond to, recover from, and mitigate all hazards.**