



FEMA

Daily Operations Briefing

Monday, November 2, 2015

8:30 a.m. EST

Significant Activity: Oct 30-Nov 2



Significant Event: Severe Weather/Flooding – Southern Plains (*FINAL*)

Tropical Activity:

- Atlantic: Tropical cyclone activity is not expected during the next 48 hours
- Eastern Pacific: Tropical cyclone activity not expected during the next 48 hours
- Central Pacific: No tropical cyclones expected through Wednesday morning
- Western Pacific: No activity affecting U.S. territories

Significant Weather:

- Flash flooding – Florida Panhandle to the Carolinas
- Snow/Rain – Intermountain, Central Great Basin, Northern/Central Rockies & Northern/Central Plains
- Rain/Thunderstorms – Pacific Northwest to California, portion of Central Great Basin & Southeast
- Red Flags Warnings – None
- Critical/Elevated Fire Weather Areas – None
- Space weather: Minor, R1 radio blackouts occurred past 24 hours; Strong, G3 geomagnetic storms, R1 radio blackouts expected next 24 hours

Declaration Activity:

- Disaster Declaration for FEMA-4244-DR-Alaska

Severe Weather/Flooding – Southern Plains (FINAL)



Current Situation:

- The heaviest rainfall has ended across south-central Texas where 36-hour rain totals were 14-18" between the Austin and San Antonio area
- River flooding and flash flooding impacts improve slowly as a drying trend develops
- Local damage assessments are ongoing from Waco, west of San Antonio & in to LA
- Texas SOC received an initial report of a tornado in Brazoria County; mobile homes in the City of Alvin (pop 25k) sustained damage
- 10 - 30 homes reported damaged due to severe weather in Harris County, TX (NWS)

Impacts:

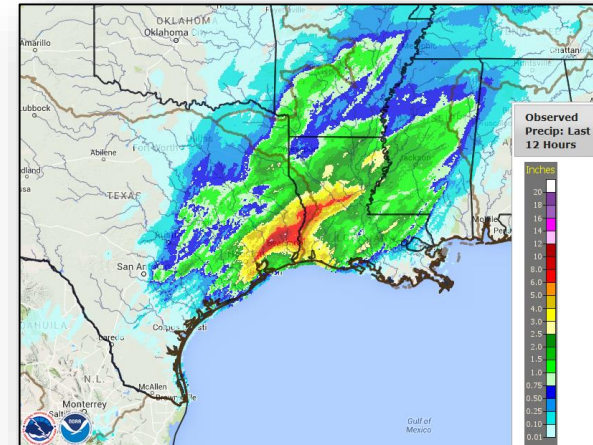
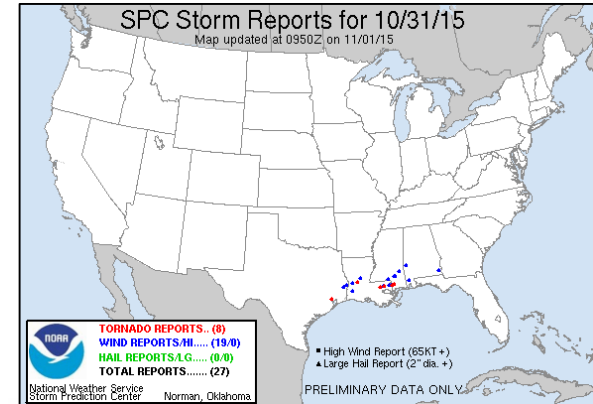
- Texas confirmed (1) fatality and (2) missing citizens as a result of flooding
- 5 ARC/Independent shelters are open with 101 (-8) occupants (ARC 5:00 a.m. EST)
- Power outages TX – 3K (peak 71K - EAGLE-I 7:15 a.m. EST)
- There has been no request for FEMA assistance

State/Local Response:

- TX EOC returned to normal operations
- LA EOC is at Level III (Monitoring)

FEMA Region VI:

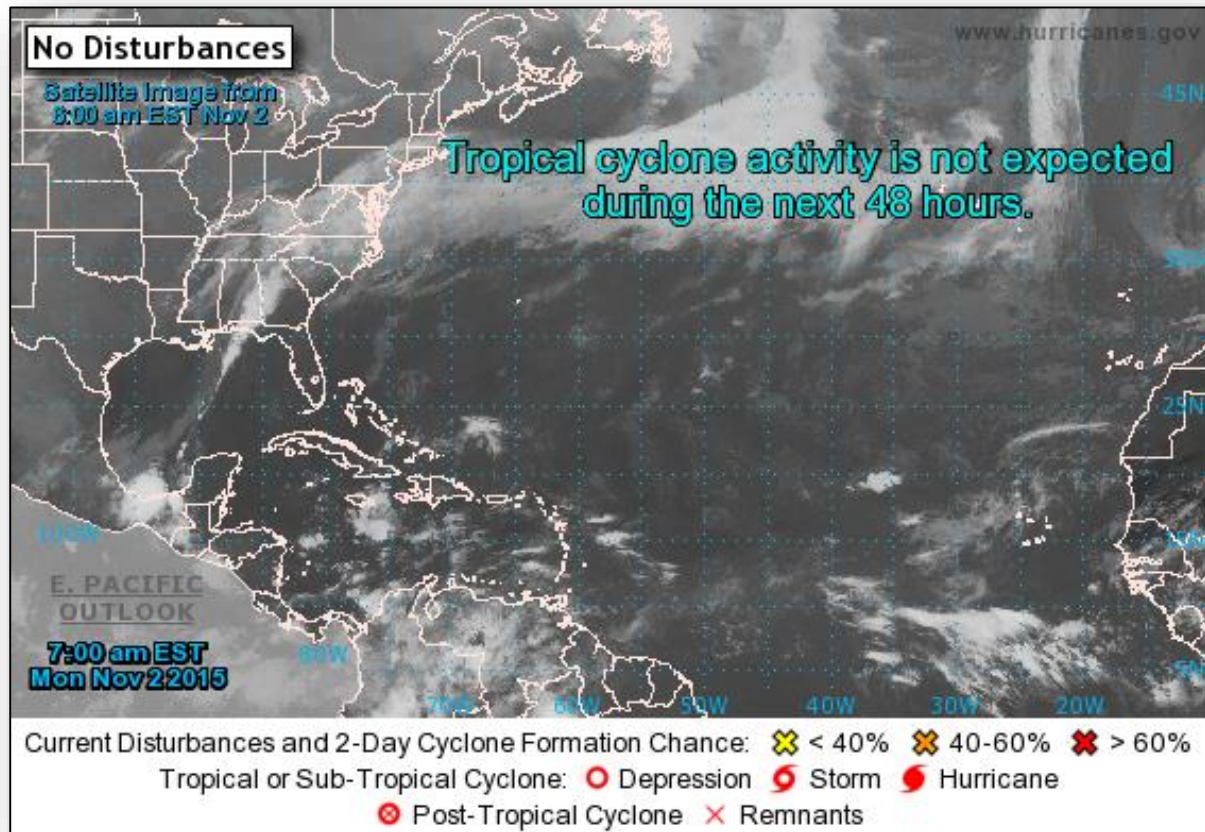
- RWC returned to Watch/Steady State; LNOs were released from TX SEOC
- IMAT remains deployed to Austin supporting FEMA-4223-DR-TX



2 Day Tropical Outlook – Atlantic



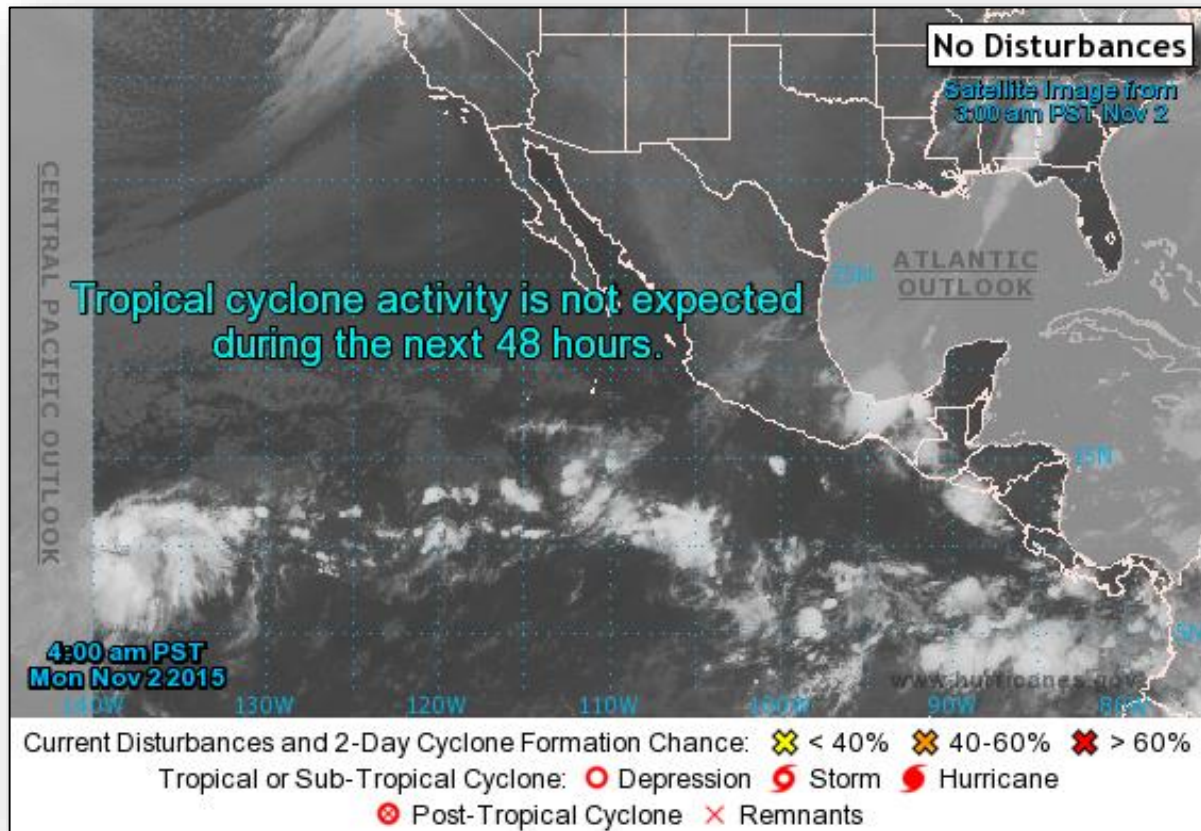
FEMA



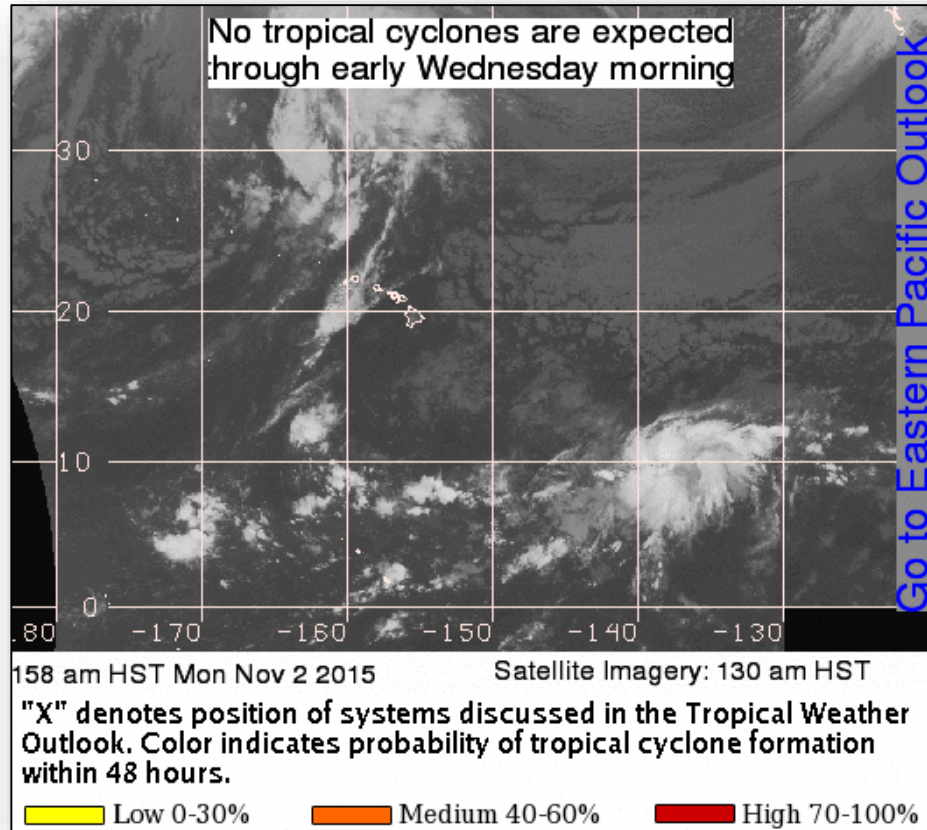
2 Day Tropical Outlook – Eastern Pacific



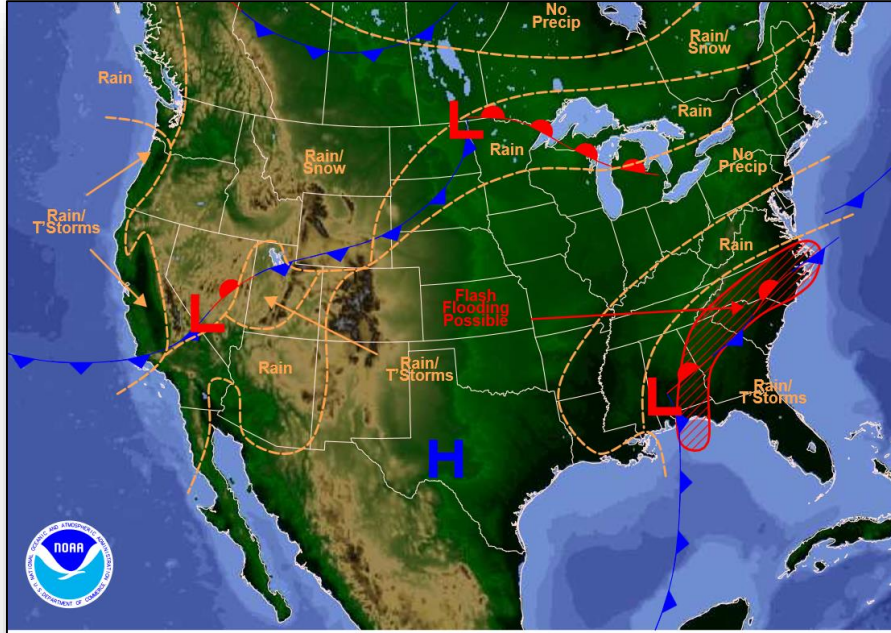
FEMA



2 Day Tropical Outlook – Central Pacific

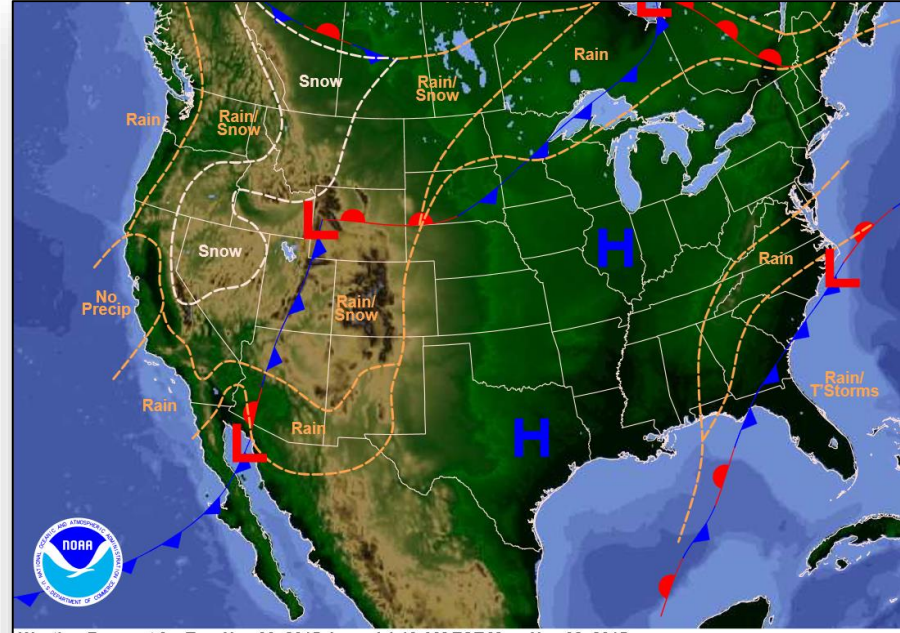


National Weather Forecast



Weather Forecast for Mon, Nov 02, 2015, issued 4:09 AM EST
DOC/NOAA/NWS/NCEP/Weather Prediction Center
Prepared by McReynolds based on WPC, SPC and NHC forecasts

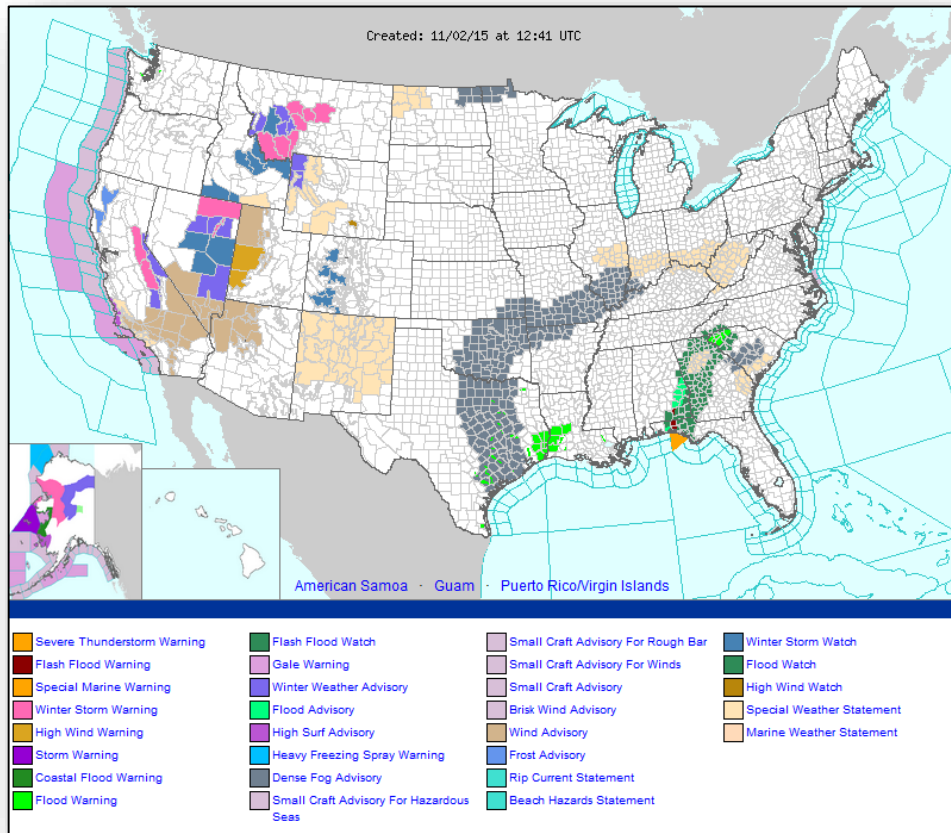
Today



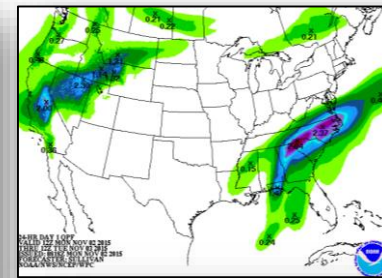
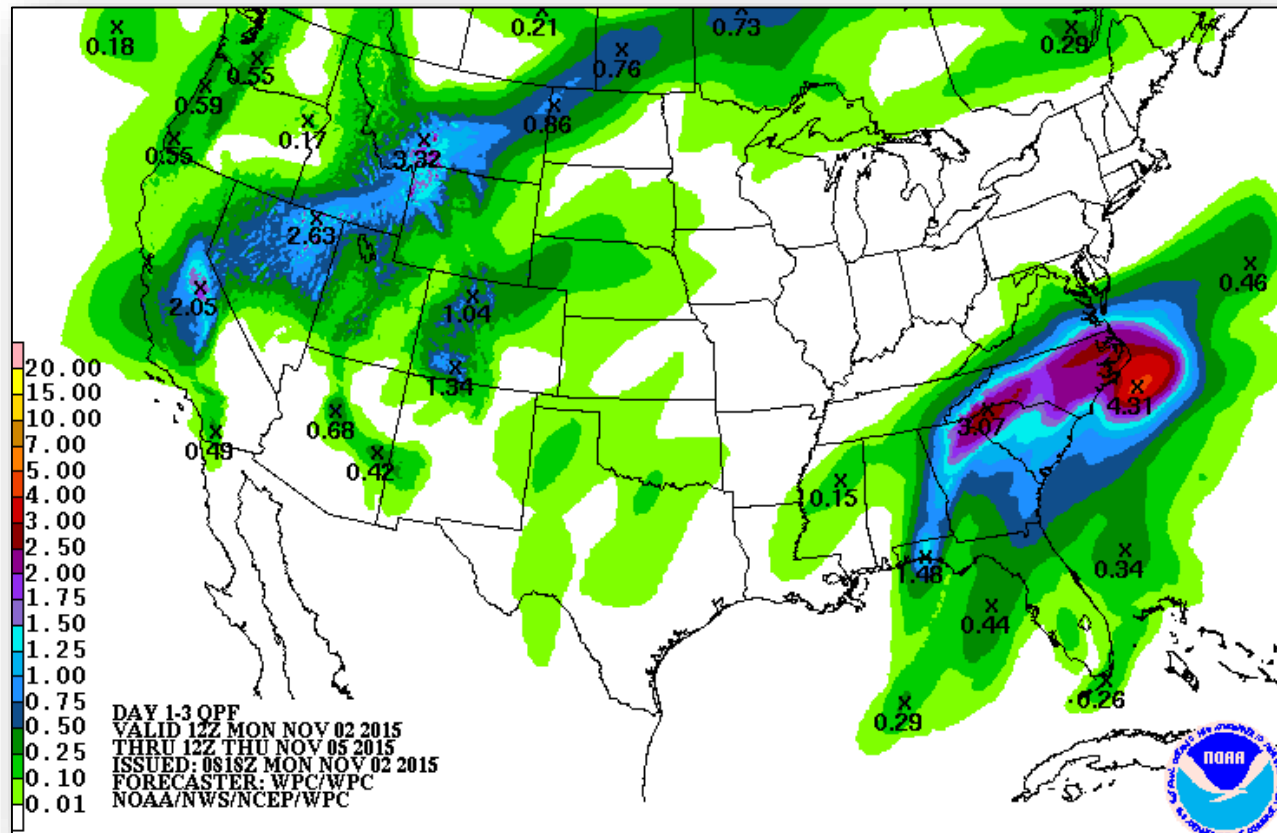
Weather Forecast for Tue, Nov 03, 2015, issued 4:13 AM EST Mon, Nov 02, 2015
DOC/NOAA/NWS/NCEP/Weather Prediction Center
Prepared by McReynolds based on WPC, SPC and NHC forecasts

Tomorrow

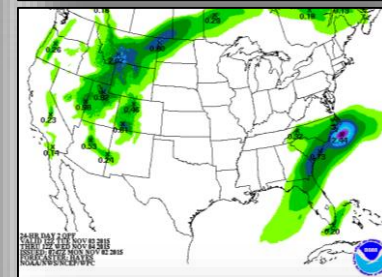
Active Watches/Warnings



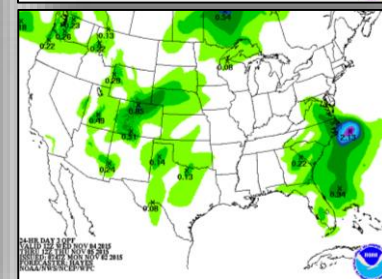
Precipitation Forecast, 1-3 Day



Day 1

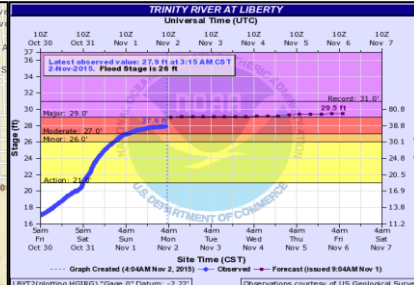
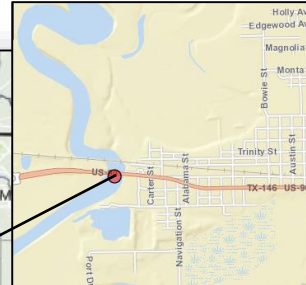
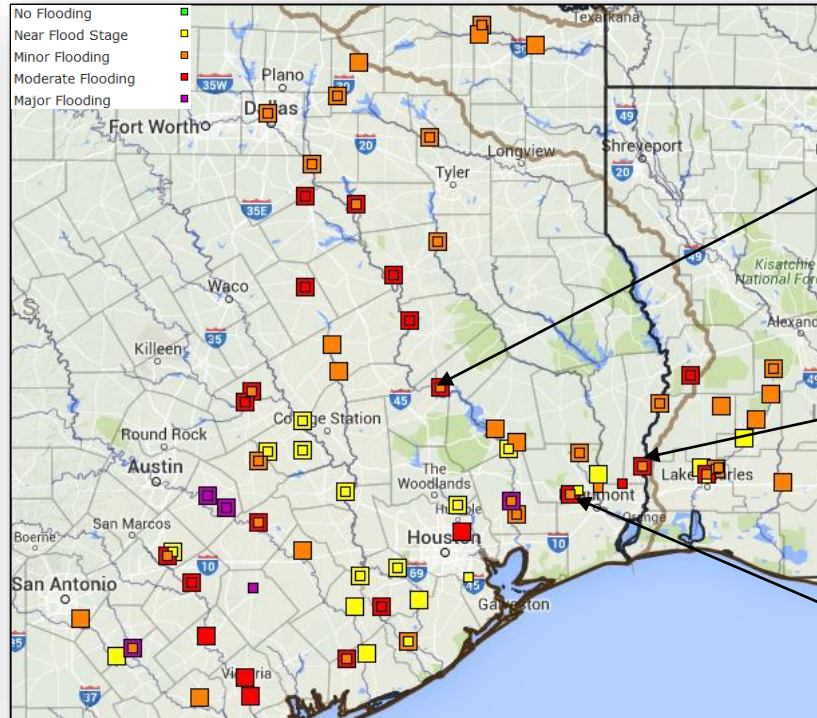


Day 2



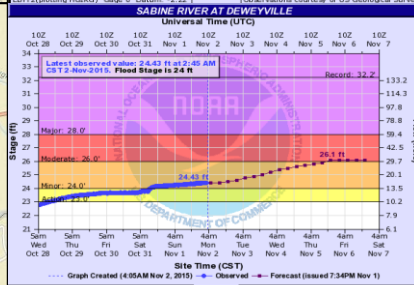
Day 3

River Forecast



Trinity River at Liberty:
Expected to crest at 29.5

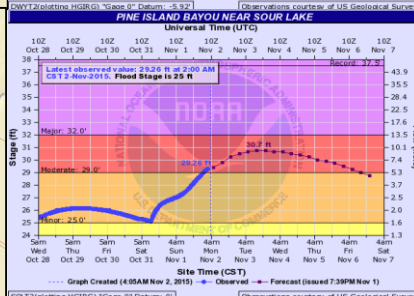
At 29 ft: Major lowland flooding; homes in several subdivisions begin flooding. Extensive flooding over much of Liberty County can be expected



Sabine River at Deweyville:
Expected to crest at 26.2

At 26 ft: Lowland flooding blocking road access to local schools & homes

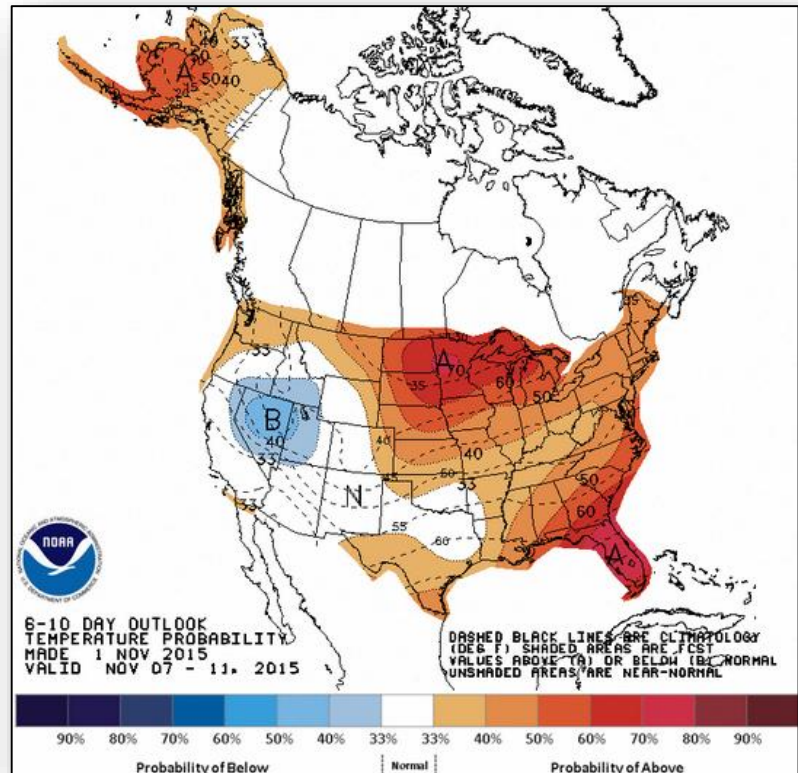
Homes in lowland areas flood in communities nearest river



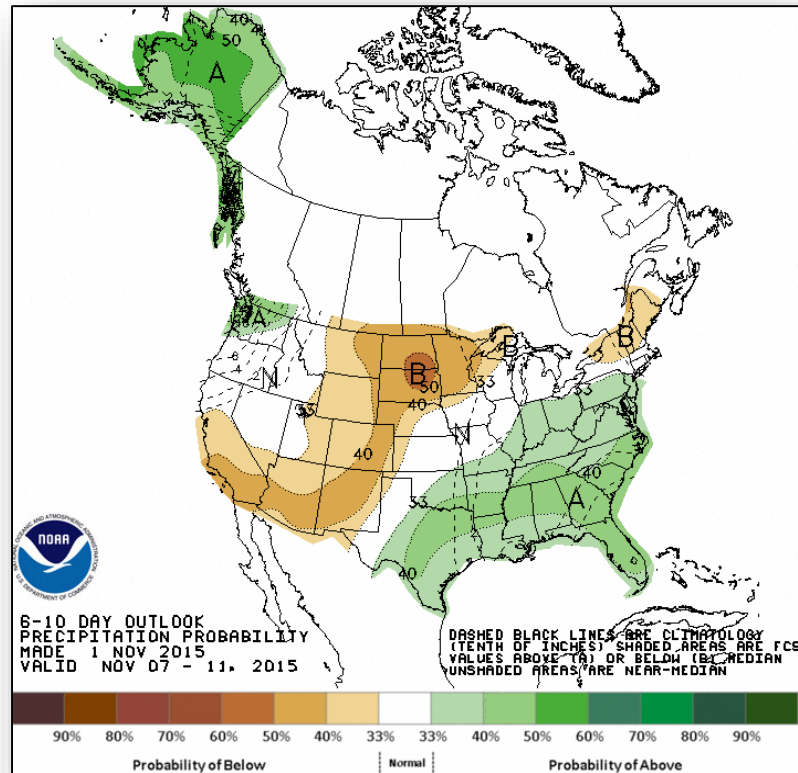
Pine Island Bayou at Sour Lake:
Expected to crest at 38.5

At 38.5 ft: Homes near the bayou have water in them. Local roads blocked due to flooding

6-10 Day Outlooks



Temperature Probability

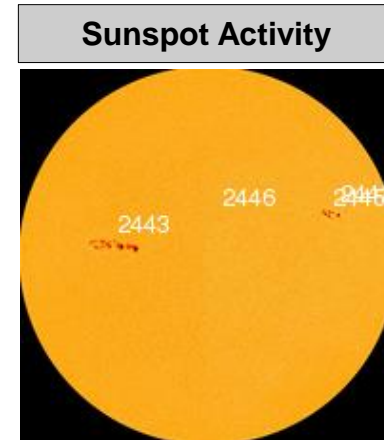
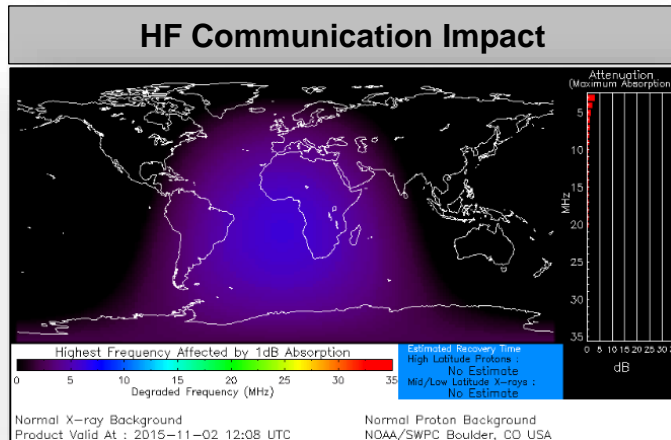


Precipitation Probability

Space Weather

	Past 24 Hours	Current	Next 24 Hours
Space Weather Activity:	None	None	Strong
• Geomagnetic Storms	None	None	G3
• Solar Radiation Storms	None	None	None
• Radio Blackouts	None	None	R1

**** Space Weather Watch is in effect:** Impacts for G3/Strong: Power Systems: Voltage corrections may be required, false alarms triggered on some protection devices; Intermittent satellite navigation and low frequency radio navigation problems may occur, HF radio may be intermittent. (SWPC)



Disaster Requests & Declarations



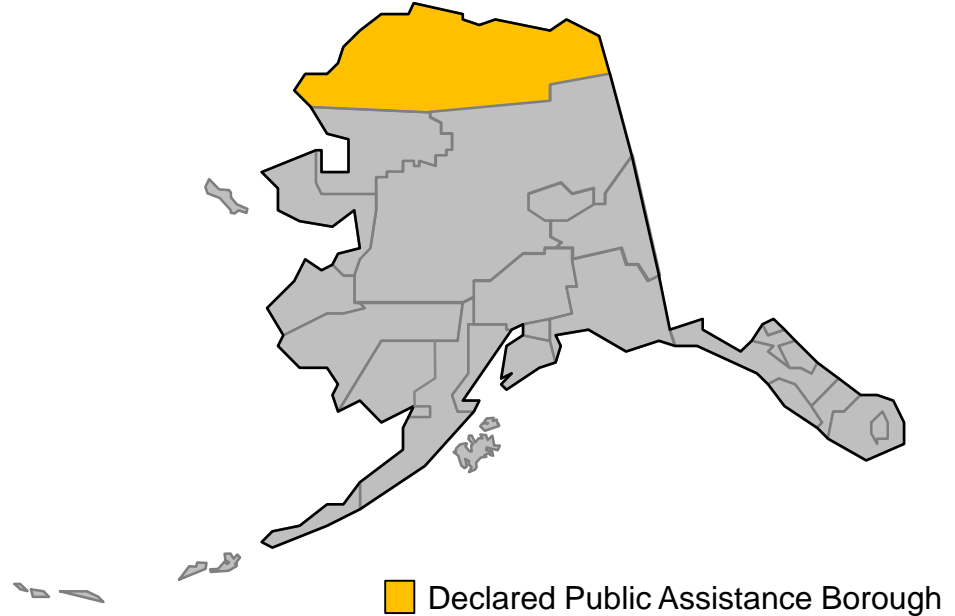
Declaration Requests in Process		Requests APPROVED (since last report)	Requests DENIED (since last report)
1	Date Requested	1	0
Alaska – DR Severe Storm	October 26, 2015	Declared October 30, 2015	
North Carolina – Severe Storms, Flooding	October 28, 201		

Major Disaster Declaration – Alaska

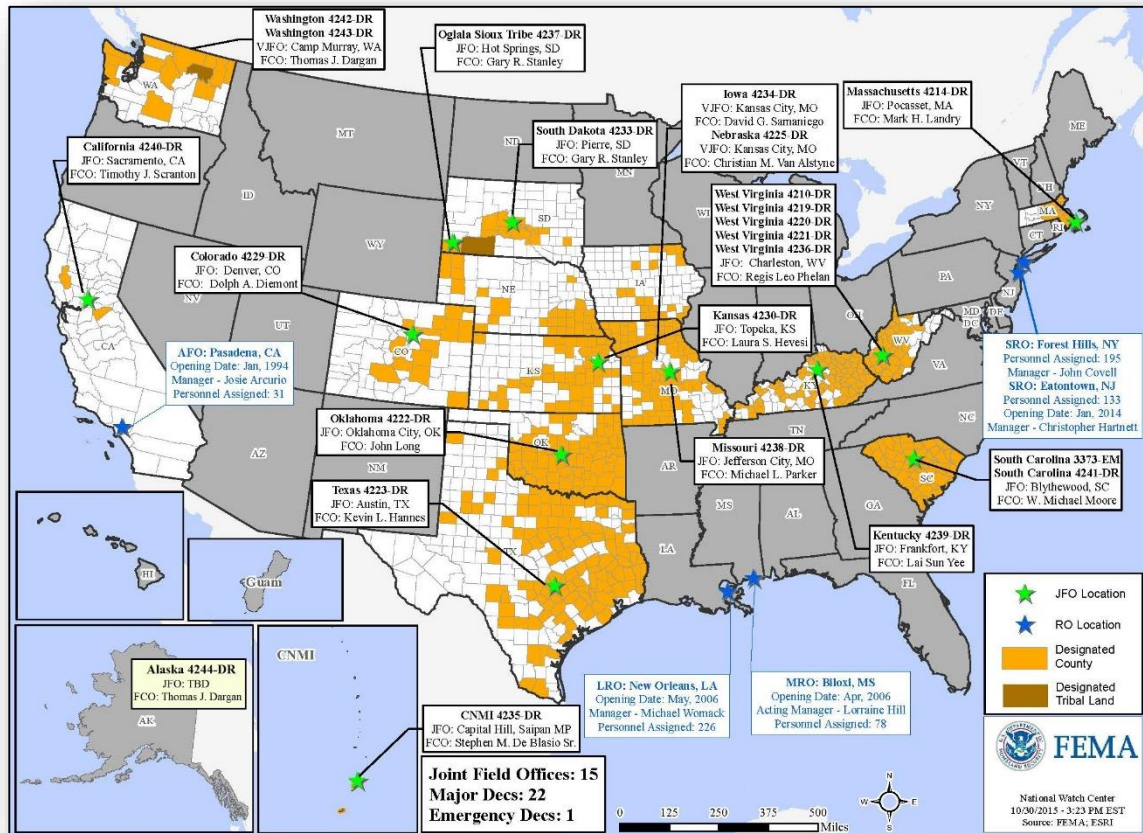


FEMA-4244-DR-AK

- Major Disaster Declaration was declared on October 30, 2015, for the State of Alaska
- For a Severe Storm on August 27, 2015
- Provides:
 - Public Assistance for North Slope Borough
 - Hazard Mitigation statewide
- FCO is Thomas J. Dargan



Open Field Offices as of November 2



Joint Preliminary Damage Assessments



Region	State / Location	Event	IA/PA	Number of Counties		Start – End
				Requested	Complete	
VI	NM	Severe Storms October 30, 2015, and continuing	IA	2	0	TBD
XI	CNMI	Typhoon Champi October 15-19, 2015	PA	2	0	TBD

FEMA Readiness – Deployable Teams /Assets



Deployable Teams/Assets									
Resource	Status	Total	FMC Available		Partially Available	Not Available	Detailed, Deployed, Activated	Comments	Rating Criterion
FCO		35	12	34%	0	1	22		OFDC Readiness: FCO Green Yellow Red Type 1 3+ 2 1 Type 2 4+ 3 2 Type 3 4 3 2
FDRC		7	3	43%	0	0	4		FDRC 3 2 1
US&R		28	27	96%	0	1	0	NM-TF1 (Red) – Personnel shortages	• Green = Available/FMC • Yellow = Available/PMC • Red = Out-of-Service • Blue = Assigned/Deployed
National IMAT		3	1	33%	0	0	2	N-IMAT East-1 Deployed to SC N-IMAT West Demobilizing – FMC on 11/2/2015	• Green: 3 avail • Yellow: 1-2 avail • Red: 0 avail (Individual N-IMAT red if 50% of Section Chiefs and/or Team Leader is unavailable for deployment.)
Regional IMAT		13	3	23%	0	1	9	Deployed: RI (Team 1), RII, RIV (Teams 1) Deployed to SC RVI (Team 2) Deployed to TX RVII Deployed to MO RVIII (Team 1) Deployed to TX (Exercise) RIX (Team 1) Deployed to Saipan; (Team 2) Deployed to CA RX Deployed to WA NMC: RV (Team 1) Red – Personnel Shortages Returned: RIV (Team 2) Returned from SC	• Green: 7 or more avail • Yellow: 4 - 6 teams available • Red: > 8 teams deployed/unavailable R-IMAT also red if TL Ops/Log Chief is unavailable & has no qualified replacement
MCOV		59	22	37%	0	12	25	3 MCOVs deployed to CA (FEMA-4240-DR) 23 MCOVs deployed to SC (FEMA-4241-DR)	• Green = 80 – 100% avail • Yellow = 60 – 79% avail • Red = 59% or below avail • Readiness remains 95%

FEMA Readiness – National/Regional Teams



National/Regional Teams									
Resource	Status	Total	FMC Available		Partially Available	Not Available	Status	Comments	Rating Criterion
NWC		5	5	100%	0	0	Watch/Steady State		<ul style="list-style-type: none"> • Green = FMC • Yellow = PMC • Red = NMC
NRCC		2	344	89%	0	44	Not Activated		
HLT		1	N/A	N/A	0	0	Activated		
DEST							Not Activated		
RRCCs		10	10	100%	0	0	Not Activated		
RWCs/MOCs		10	10	100%	0	0	Not Activated		



FEMA

FEMA's mission is to support our citizens and first responders to ensure that as a nation we work together to build, sustain, and improve our capability to prepare for, protect against, respond to, recover from, and mitigate all hazards.