



FEMA

Daily Operations Briefing

Monday, October 26, 2015

8:30 a.m. EDT

Significant Activity: Oct 24-26



Significant Events:

- Heavy precipitation & flood threat – Southern Plains
- M 7.7 Earthquake in Afghanistan

Tropical Activity:

- Atlantic: None expected during the next 48 hours
- Eastern Pacific: Disturbance 1
- Central Pacific: Tropical Storm Olaf
- Western Pacific: No activity affecting U.S. territories

Significant Weather:

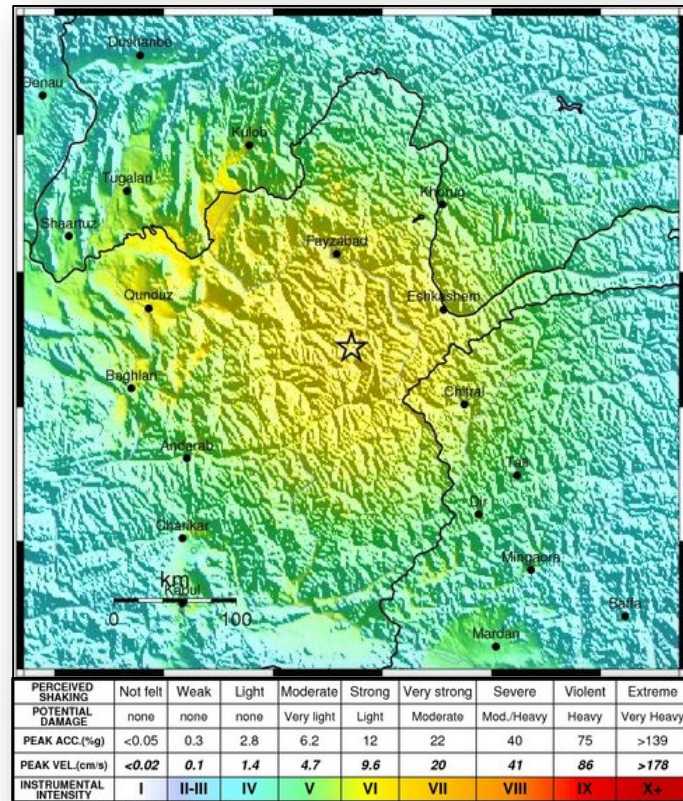
- Rain and thunderstorms – Southwest & The Plains to Great Lakes & Mid-Atlantic
- Flash flooding possible – Lower Mississippi Valley & Tennessee Valley
- Rain and snow – Central Basin & Northern Intermountain
- Red Flags Warnings – None
- Elevated Fire Weather Areas – None
- Space weather: past 24 hrs – none; next 24 hrs – None

Declaration Activity: None

Earthquake – Afghanistan

M7.5 Earthquake Hindu Kush, Afghanistan

- Occurred at 5:09 a.m. EDT on October 26, 2015
- 27 miles SSW of Jarm, Afghanistan
- At a depth of 132.7 miles
- Orange Pager alert issued; MMI VII
- Unconfirmed social media reports of injuries, fatalities, and damages
- No requests for assistance at this time



Flooding - Southern Plains (FINAL)



Situation:

- Conditions over eastern Texas continue to improve

Impacts:

- Flood waters will move down the Trinity River into Lake Livingston through the remainder of the week

State Response:

- TX EOC returned to Normal Operations; LA State EOCs are Partially Activated
- TX National Guard is providing 105 personnel for flood response operations

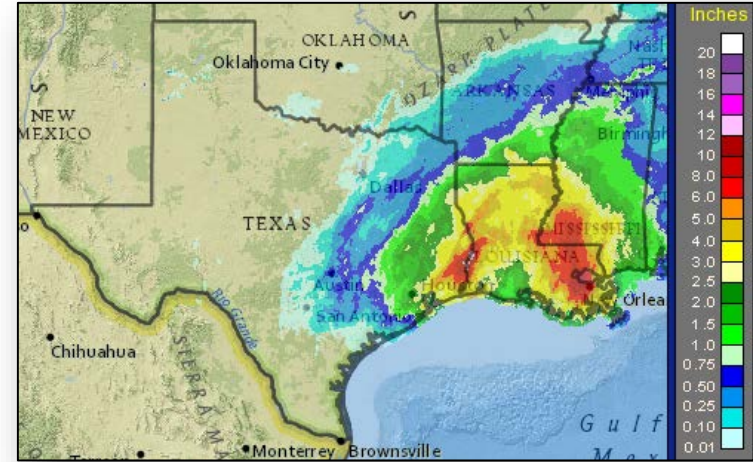
FEMA Response:

Region VI

- RRCC and RWC returned to Normal Operations
- Region VI IMAT-2 deployed to State EOC in support of FEMA-4223-DR-TX
- 2 FEMA LNOs to TX SEOC; Region VI IMAT-1 on standby in Denton, TX

HQ

- NRCC is not activated; NWC at Watch/Steady State
- Logistics ISB Team deployed to DC Ft. Worth



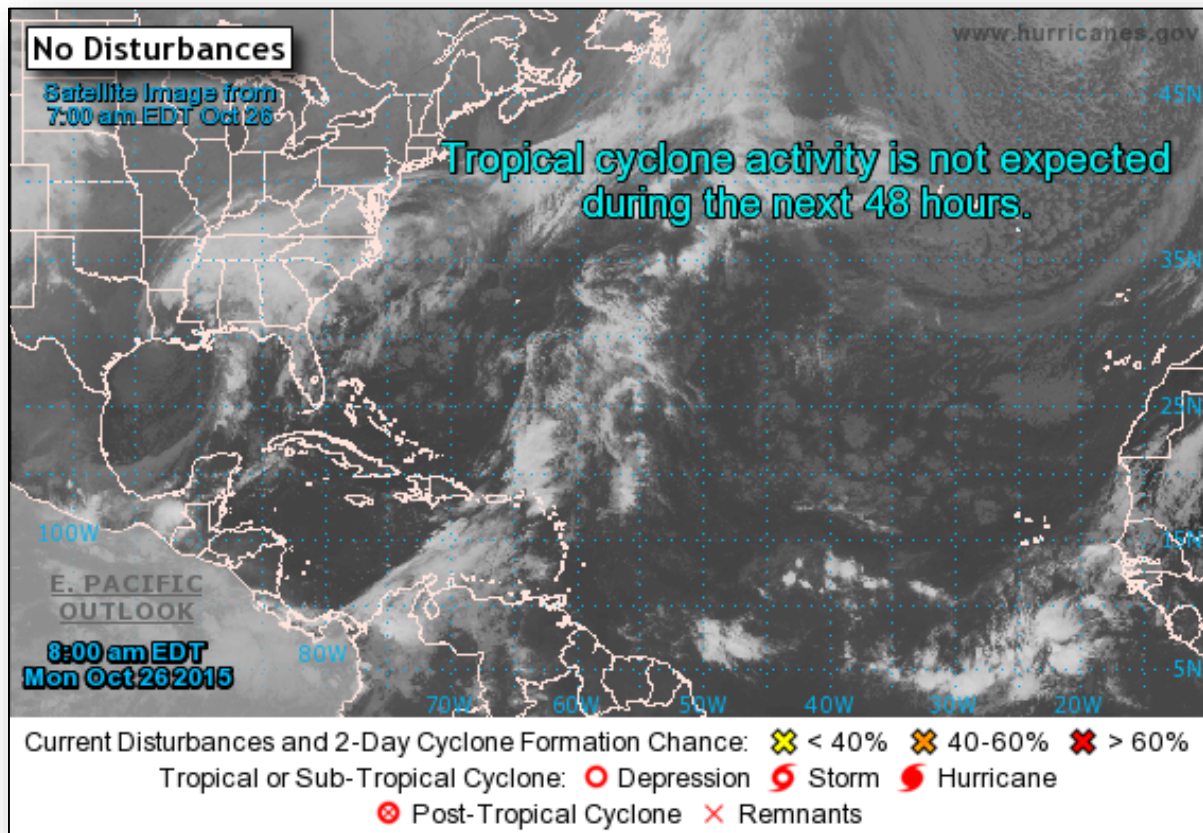
24-Hour Observed Precipitation



2 Day Tropical Outlook – Atlantic

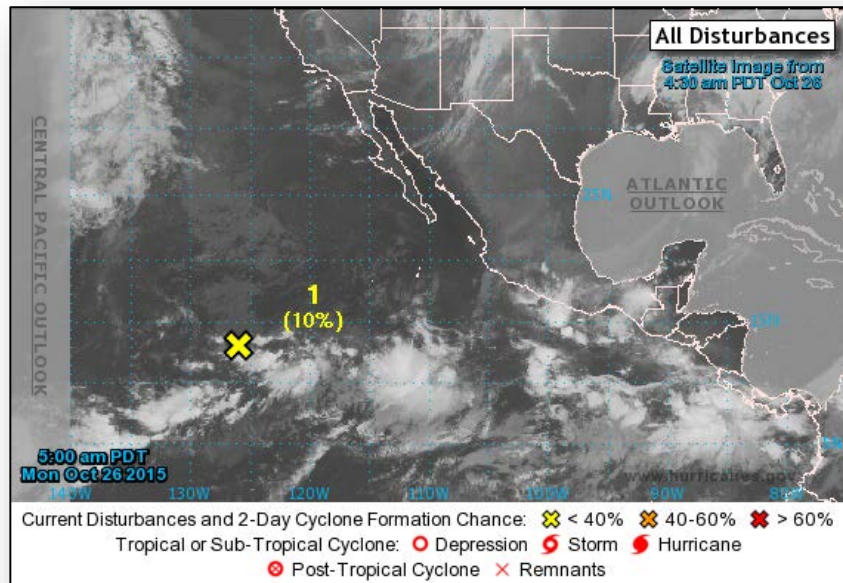


FEMA





2 Day Tropical Outlook – Eastern Pacific

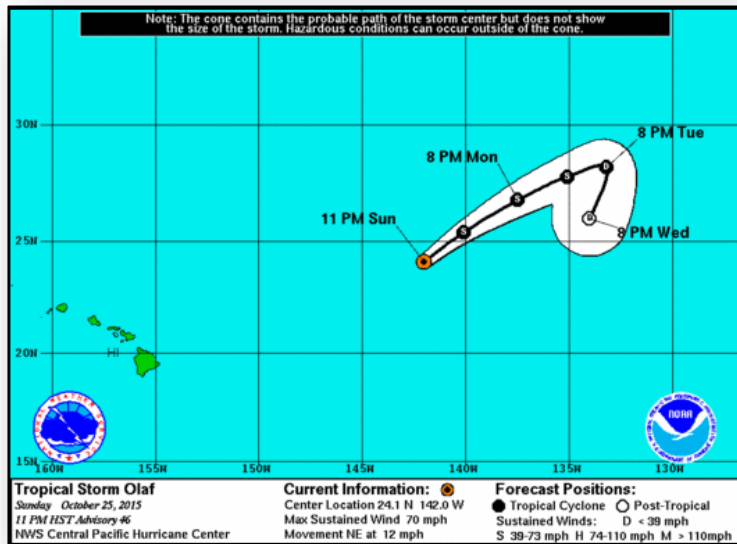


Disturbance 1 as of 8:00 a.m. EDT

- Located 1,300 miles SW of the southern tip of Baja California Peninsula
- Development of system is becoming less likely
- Formation chance through 48 hours – Low (10%)
- Formation chance through 5 days – Low (20%)



Central Pacific – Tropical Storm Olaf



Advisory #46 as of 5:00 a.m. EDT

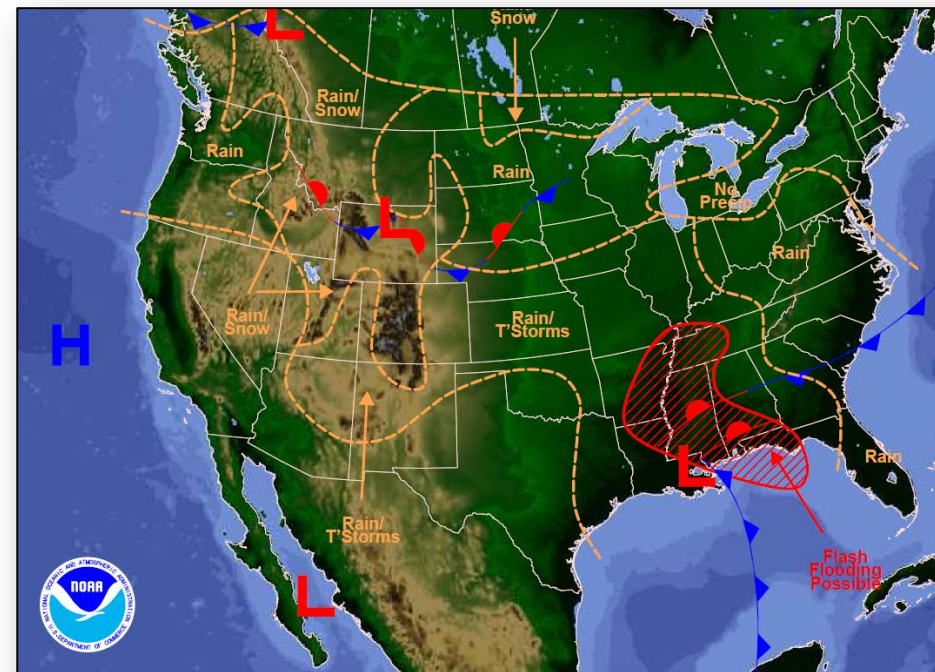
- Located 1,030 miles ENE of Honolulu, Hawaii
- Moving NE at 12 mph; increase in forward speed Monday and Monday night
- Maximum sustained winds at 70 mph
- Additional weakening is expected during the next couple days
- Tropical storm-force winds extend up to 175 miles
- No coastal watches or warning in effect



National Weather Forecast

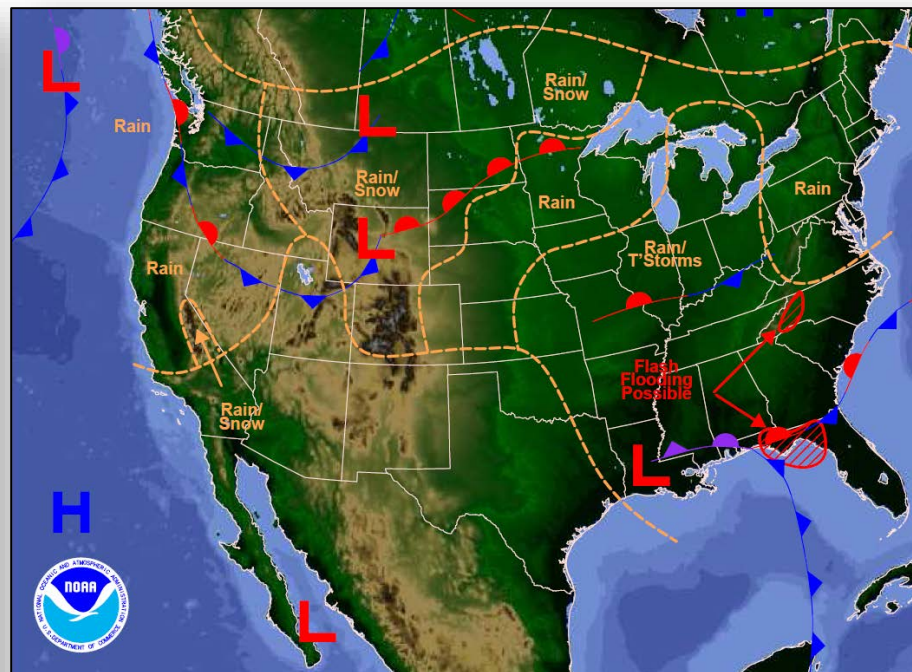


FEMA



Weather Forecast for Mon, Oct 26, 2015, issued 4:46 AM EDT
DOC/NOAA/NWS/NCEP/Weather Prediction Center
Prepared by McCreynolds based on WPC, SPC and NHC forecasts

Today



Weather Forecast for Tue, Oct 27, 2015, issued 4:55 AM EDT Mon, Oct 26, 2015
DOC/NOAA/NWS/NCEP/Weather Prediction Center
Prepared by McCreynolds based on WPC, SPC and NHC forecasts

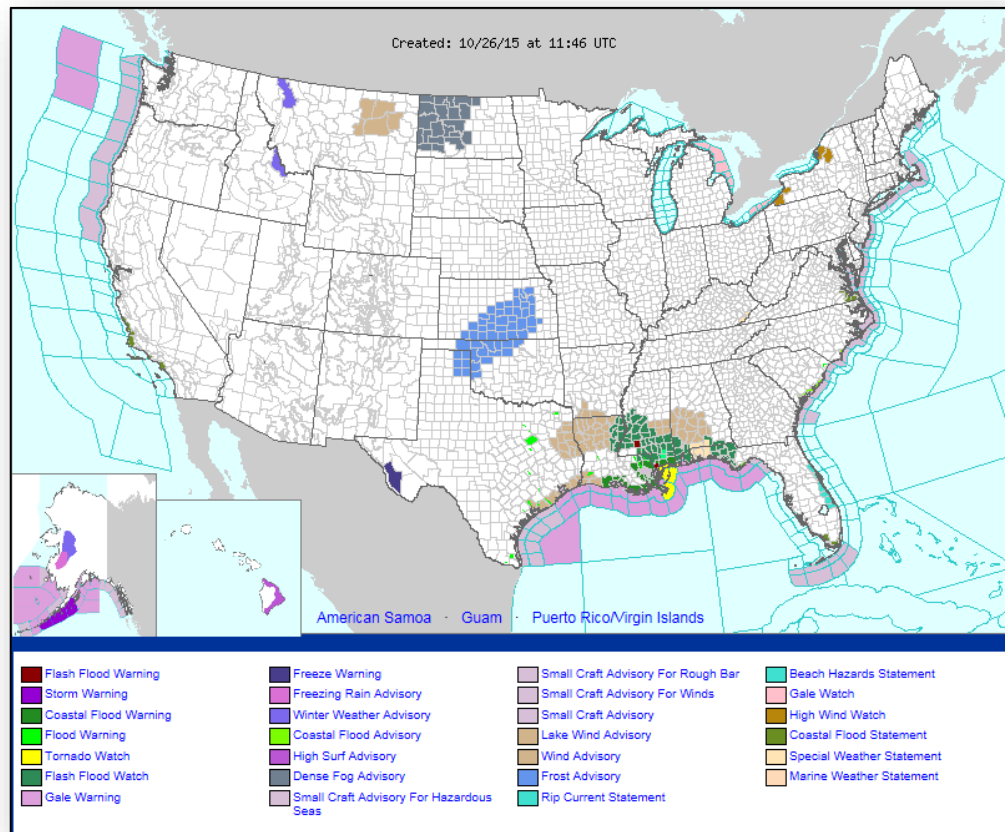
Tomorrow



Active Watches/Warnings



FEMA

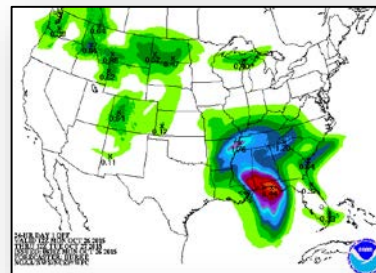
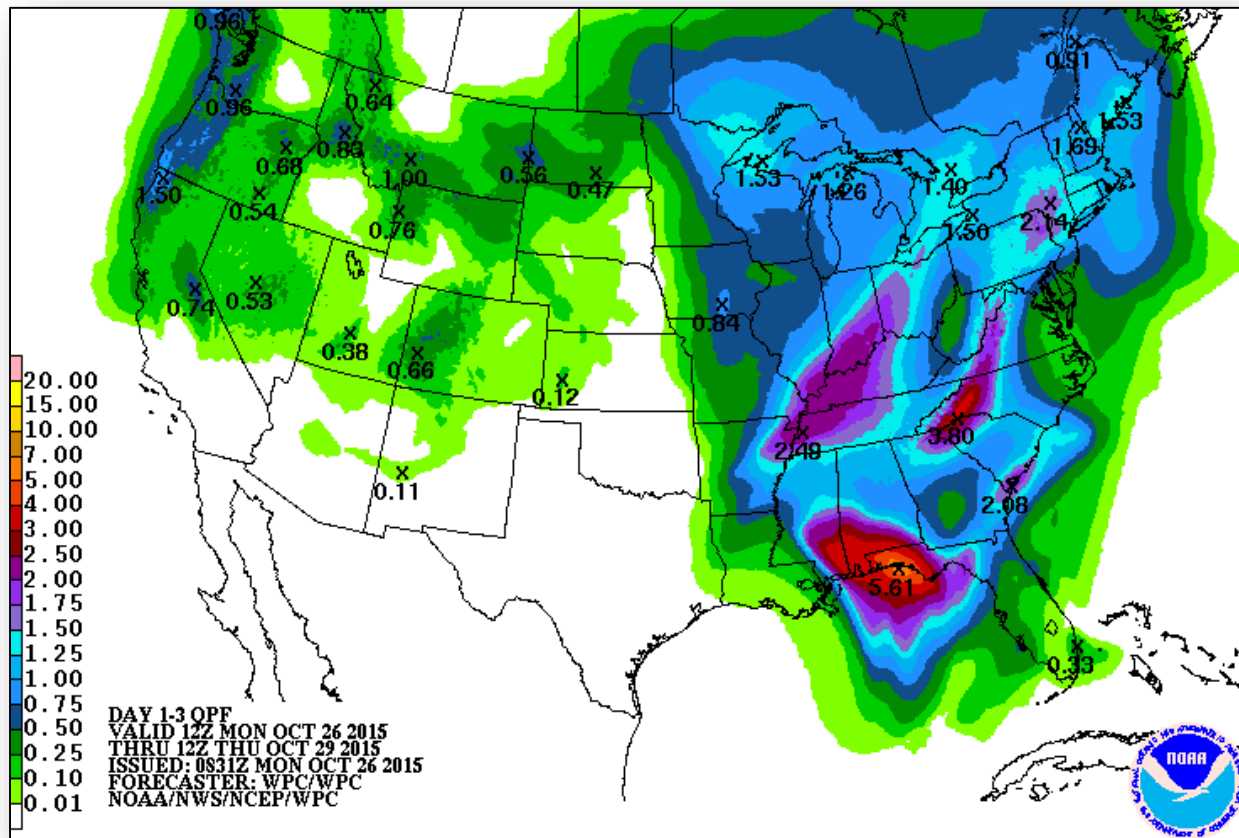




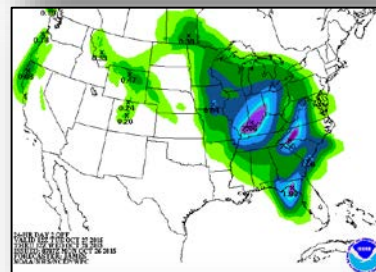
Precipitation Forecast, 1-3 Day



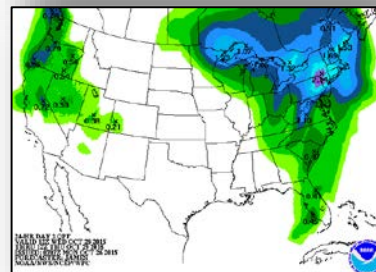
FEMA



Day 1

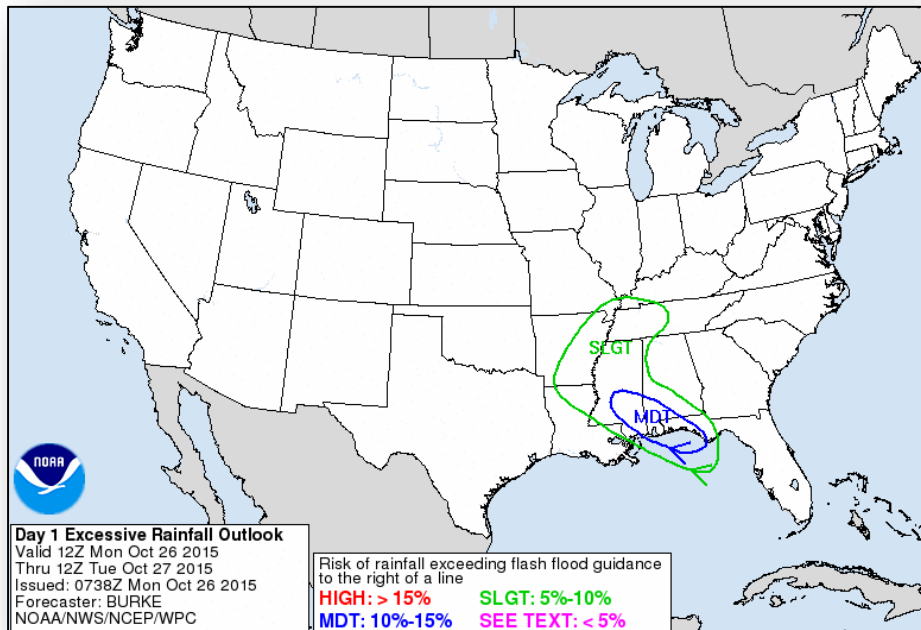


Day 2

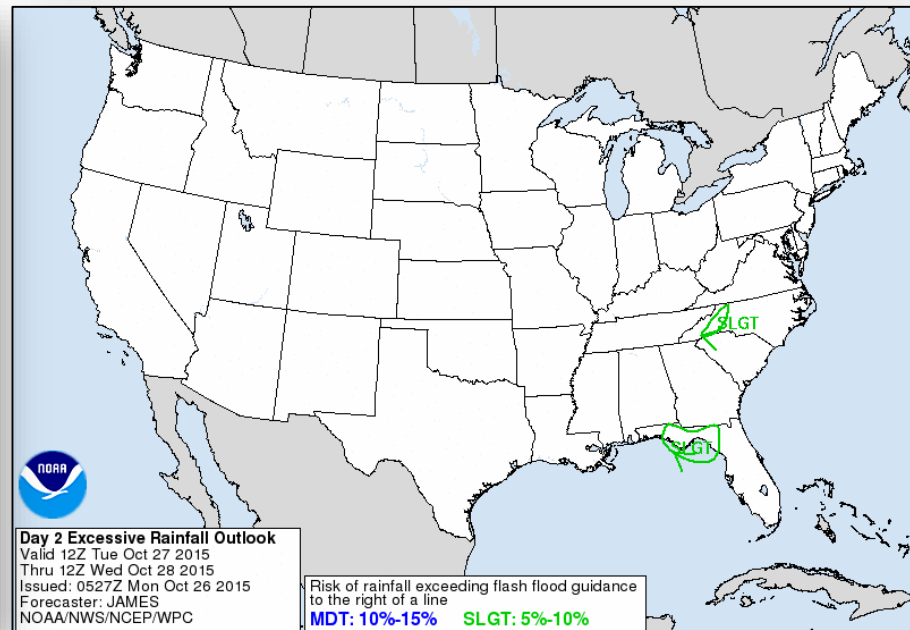


Day 3

Flash Flood Potential

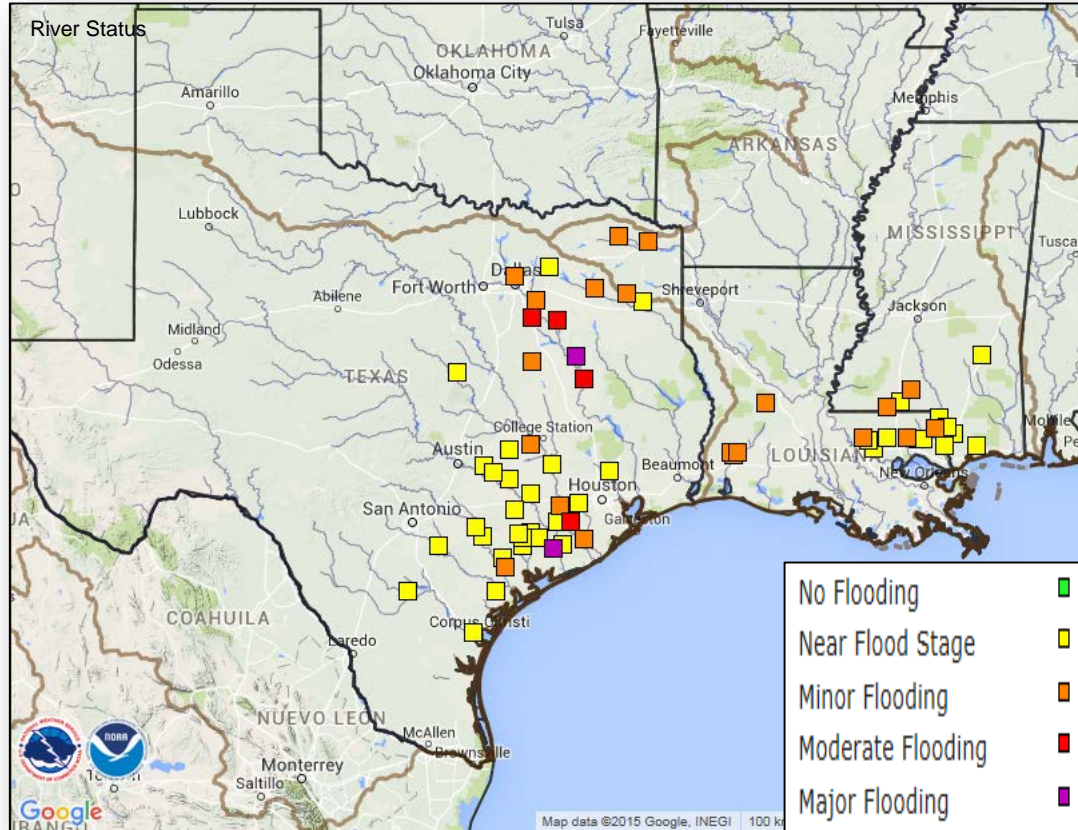


Day 1

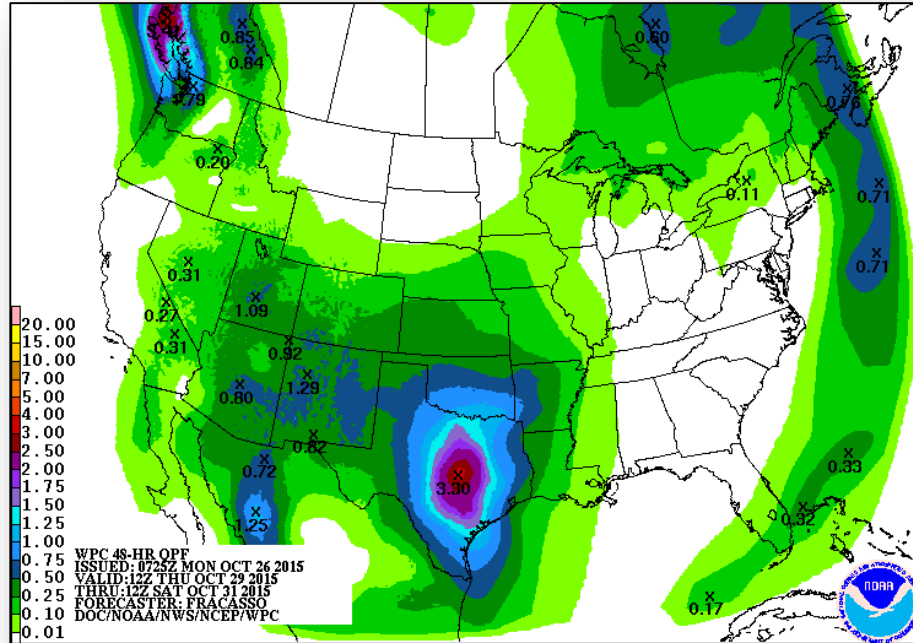


Day 2

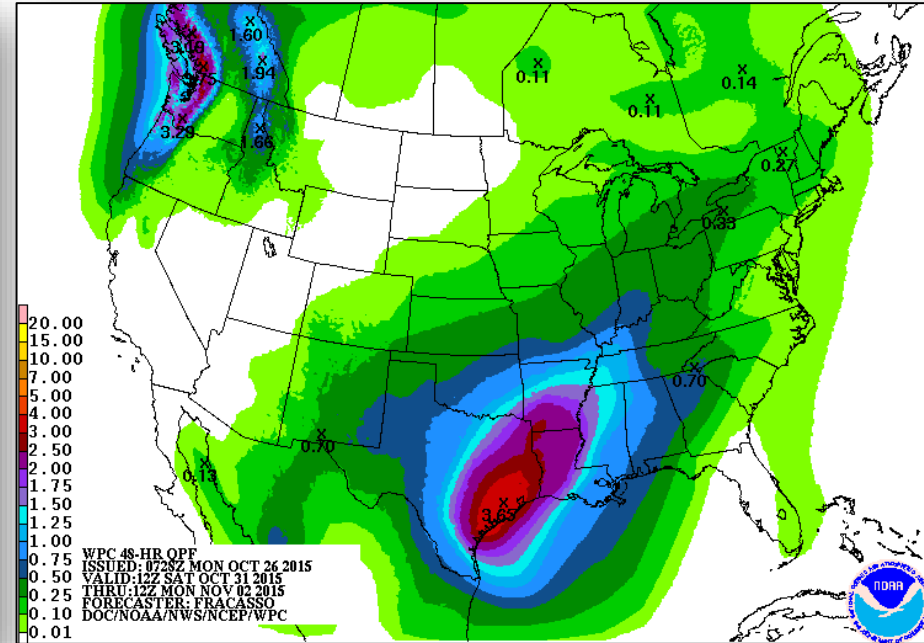
River Outlook



Precipitation Forecast

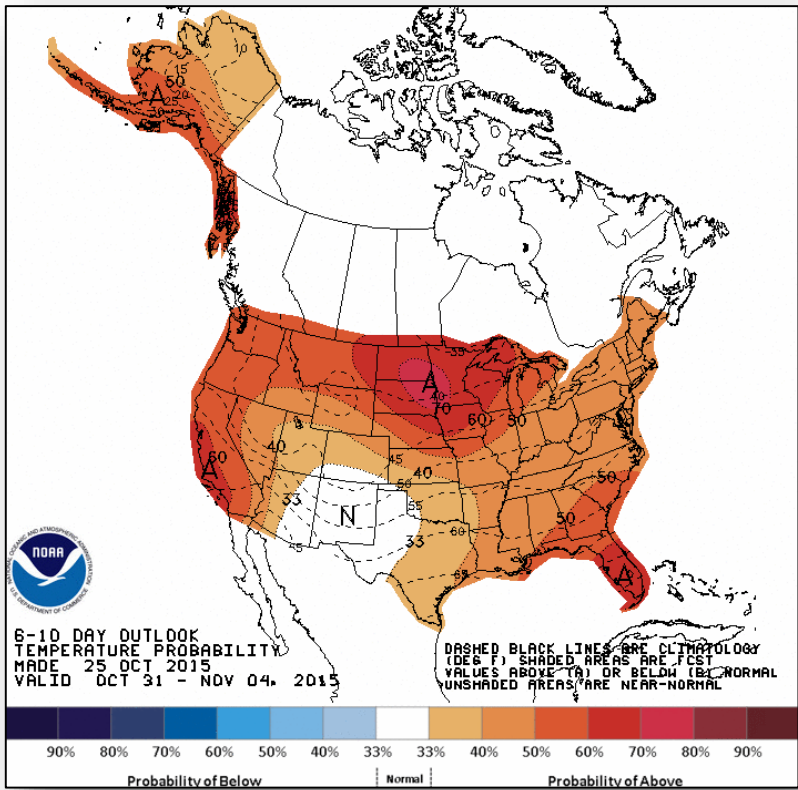


Day 4-5

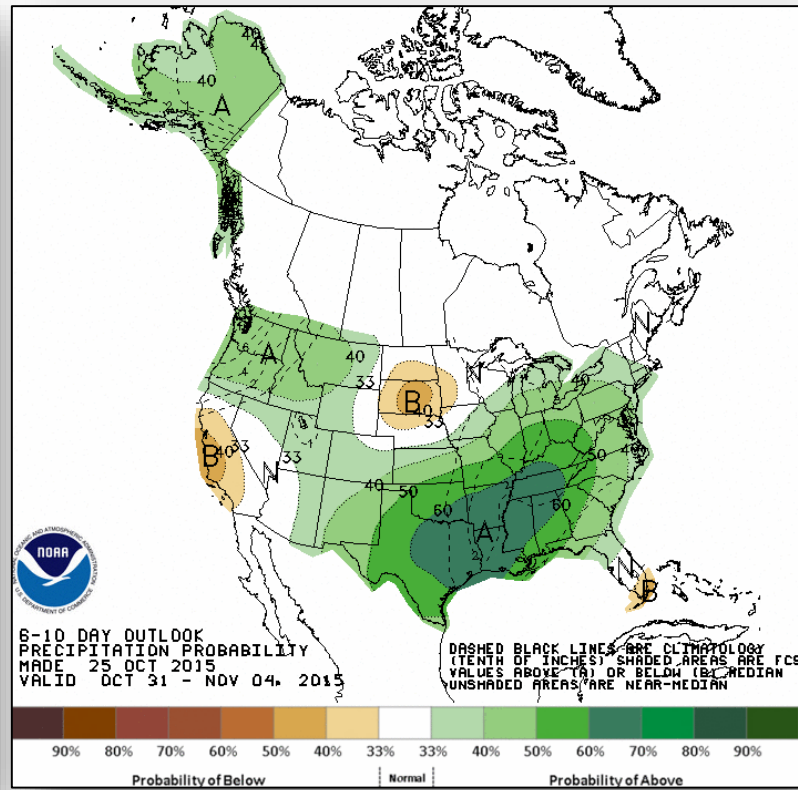


Day 6-7

6-10 Day Outlooks



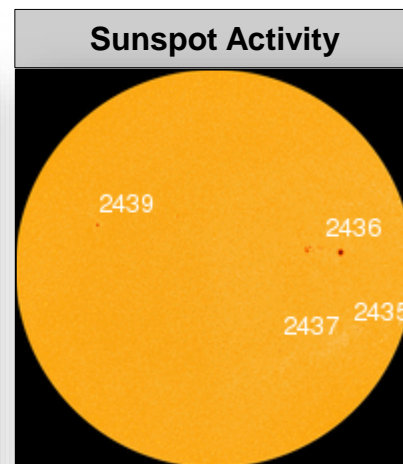
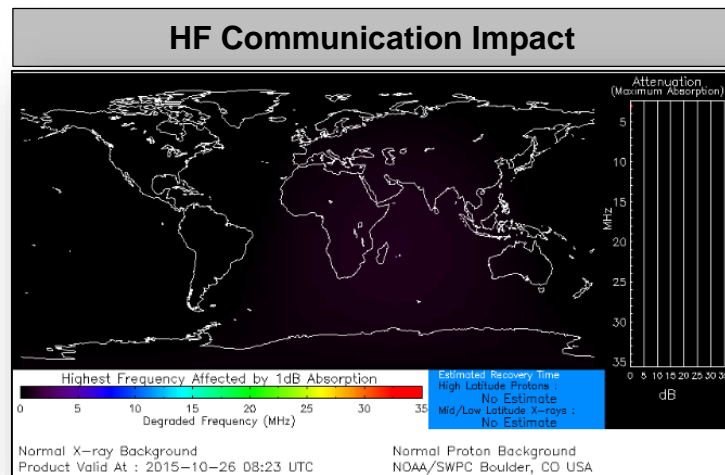
Temperature Probability



Precipitation Probability

Space Weather

	Past 24 Hours	Current	Next 24 Hours
Space Weather Activity:	None	None	None
• Geomagnetic Storms	None	None	None
• Solar Radiation Storms	None	None	None
• Radio Blackouts	None	None	None

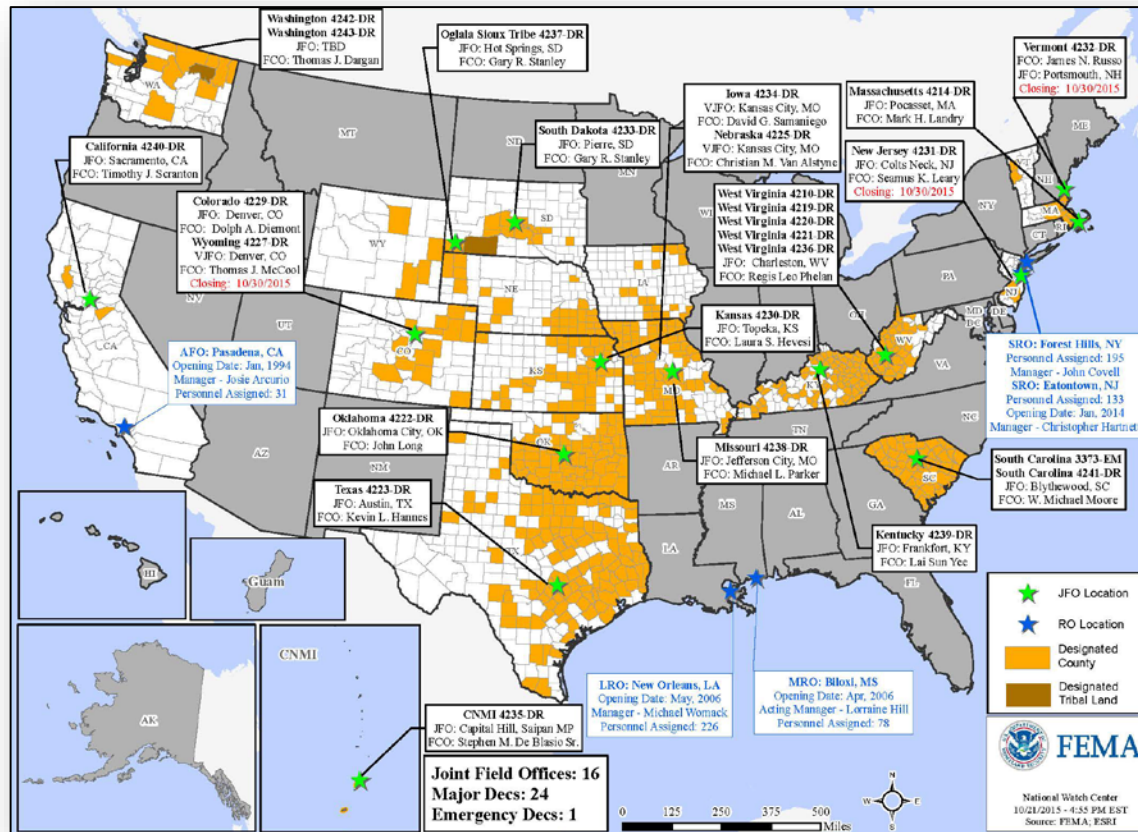




Open Field Offices as of October 26



FEMA





Joint Preliminary Damage Assessments



Region	State / Location	Event	IA/PA	Number of Counties		Start – End
				Requested	Complete	
II	NJ	Severe Coastal Storm Event & High Winds October 1-4, 2015	PA	3	0	10/26-TBD
X	AK	High Surf & Coastal Flooding August 26-28, 2015	PA	1	1	10/19-10/23



FEMA Readiness – Deployable Teams /Assets



Deployable Teams/Assets									
Resource	Status	Total	FMC Available		Partially Available	Not Available	Detailed, Deployed, Activated	Comments	Rating Criterion
FCO		35	9	26%	0	3	23		OFDC Readiness: FCO Green Yellow Red Type 1 3+ 2 1 Type 2 4+ 3 2 Type 3 4 3 2
FDRC		7	2	29%	0	0	5		FDRC 3 2 1
US&R		28	27	96%	0	1	0	NM-TF1 (Red) – Personnel shortages	• Green = Available/FMC • Yellow = Available/PMC • Red = Out-of-Service • Blue = Assigned/Deployed
National IMAT		3	1	33%	0	0	2	N-IMAT East-1 and N-IMAT West deployed to SC	• Green: 3 avail • Yellow: 1-2 avail • Red: 0 avail (<i>Individual N-IMAT red if 50% of Section Chiefs and/or Team Leader is unavailable for deployment.</i>)
Regional IMAT		13	2	15%	0	1	10	Deployed: RI (Team 1) Deployed to SC RII (Team 1) Demobilized; Fully Mission Capable RIV (Team 1) Deployed to SC; (Team 2) deployed to SC RV (Team 1) Red – Personnel Shortages RVI (Team 2) Deployed to TX RVII Deployed to MO RVIII (Team 1) Deployed to CO RIX (Team 1) Deployed to CNMI; (Team 2) Deployed to CA	• Green: 7 or more avail • Yellow: 4 - 6 teams available • Red: > 8 teams deployed/unavailable <i>R-IMAT also red if TL Ops/Log Chief is unavailable & has no qualified replacement</i>
MCOV		59	14	24%	0	15	30	7 MCOVs deployed to CA (FEMA-4240-DR) 23 MCOVs deployed to SC (FEMA-4241-DR)	• Green = 80 – 100% avail • Yellow = 60 – 79% avail • Red = 59% or below avail • Readiness remains 95%



FEMA Readiness – National/Regional Teams



National/Regional Teams									
Resource	Status	Total	FMC Available		Partially Available	Not Available	Status	Comments	Rating Criterion
NWC		5	5	100%	0	0	Watch/Steady State		<ul style="list-style-type: none">• Green = FMC• Yellow = PMC• Red = NMC
NRCC		2	344	89%	0	44	Not Activated		
HLT		1	N/A	N/A	0	0	Activated		
DEST							Not Activated		
RRCCs		10	10	100%	0	0	Not Activated		
RWCs/MOCs		10	10	100%	0	0	Not Activated		



FEMA

FEMA's mission is to support our citizens and first responders to ensure that as a nation we work together to build, sustain, and improve our capability to prepare for, protect against, respond to, recover from, and mitigate all hazards.