



# **FEMA**

## **Daily Operations Briefing**

**Thursday, October 15, 2015**

**8:30 a.m. EDT**

# Significant Activity: Oct 14-15



**Significant Events:** None

**Tropical Activity:**

- Atlantic: Tropical cyclone activity not expected next 48 hours
- Eastern Pacific: Disturbance 1 – Medium chance (70%)
- Central Pacific: Tropical Storm Nora
- Western Pacific: Tropical Depression 25

**Significant Weather:**

- Rain and Thunderstorms – Northern California stretching to the Southern Plains
- Red Flag Warnings – WY; Elevated fire Weather areas - WY
- Space weather: Past 24 hours – minor, G1 geomagnetic storms; next 24 hours – minor, G1 geomagnetic storms predicted

**Declaration Activity:** None

# Western Pacific - Tropical Storm Champi



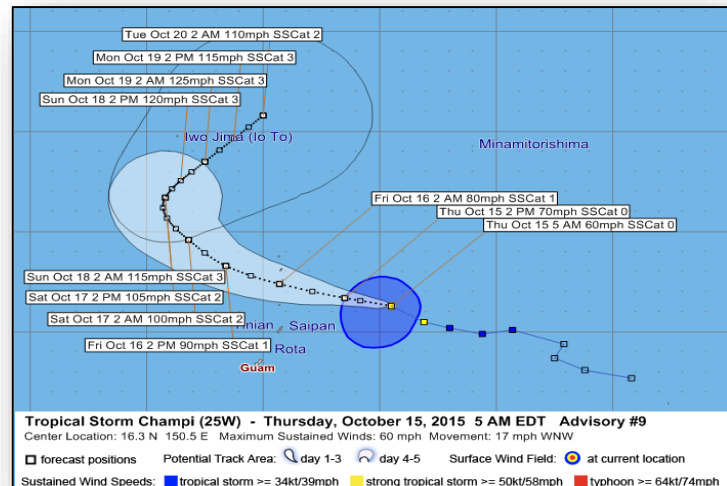
## **TS Champi – (Advisory # 9)**

- Located 380 miles E of Saipan; closest point of approach 145 miles N of Saipan
- Moving WNW at 17 mph; maximum sustained winds 60 mph
- Expected to intensify next 24 hours; could become a typhoon later today
- Rainfall: 4-7 inches possible through late Friday night
- Inundation: 2-3 feet along east facing reefs during times of high tide
- Typhoon Watches issued for Agrihan, Pagan and Alamagan
- Tropical Storm Warnings for Saipan, Tinian and Rota

**Impacts:** No significant impacts, at this time

## **Response:**

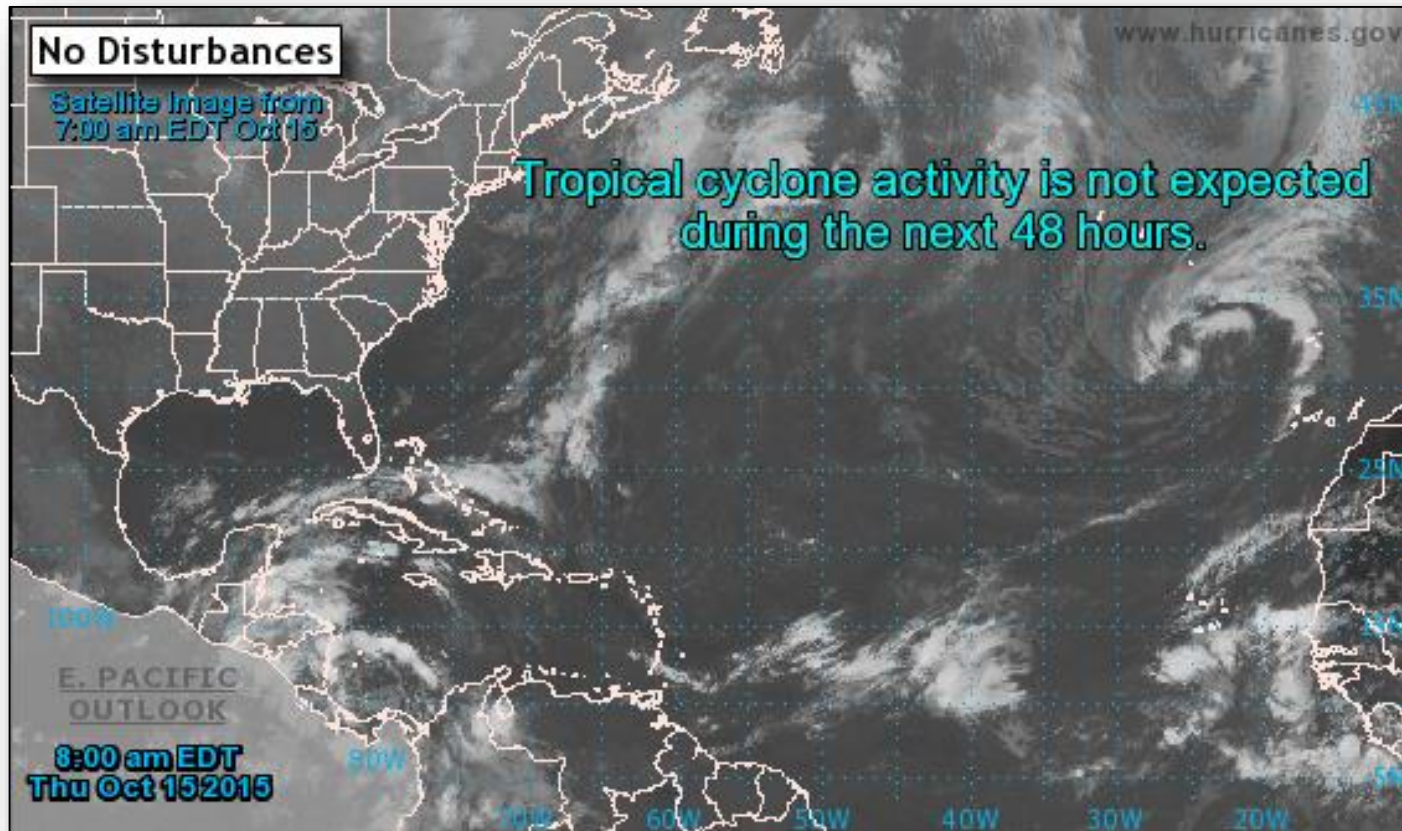
- CNMI EOC is Partially Activated; no unmet needs reported
- Region IX:
  - RRCC is not activated; RWC is at Normal Ops
  - RWC will transition to Enhanced Watch with HLT support at 0930 today
  - RIX IMAT deployed to CNMI for DR-4235 is monitoring
  - JFO staff for DR-4235 is providing an LNO to Tinian
- No requests for FEMA assistance



# 2 Day Tropical Outlook – Atlantic



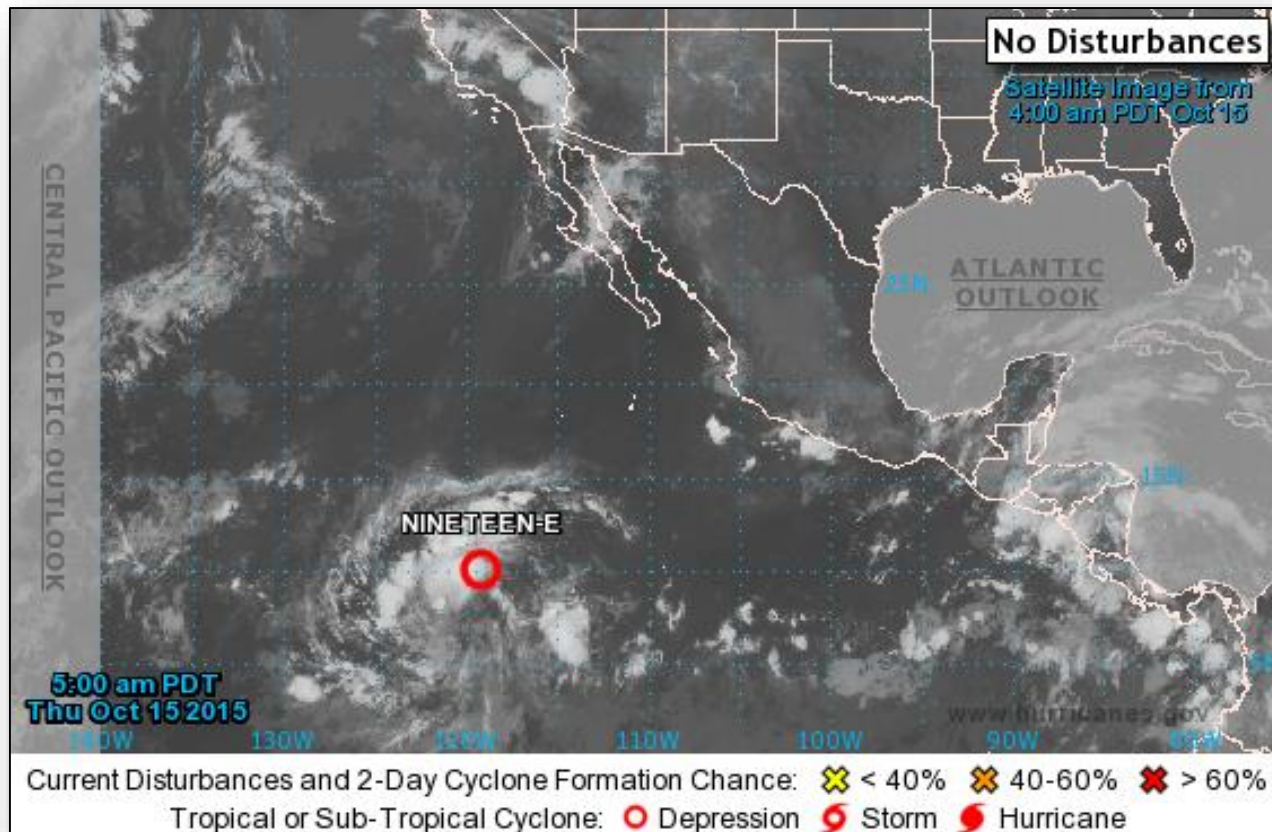
FEMA



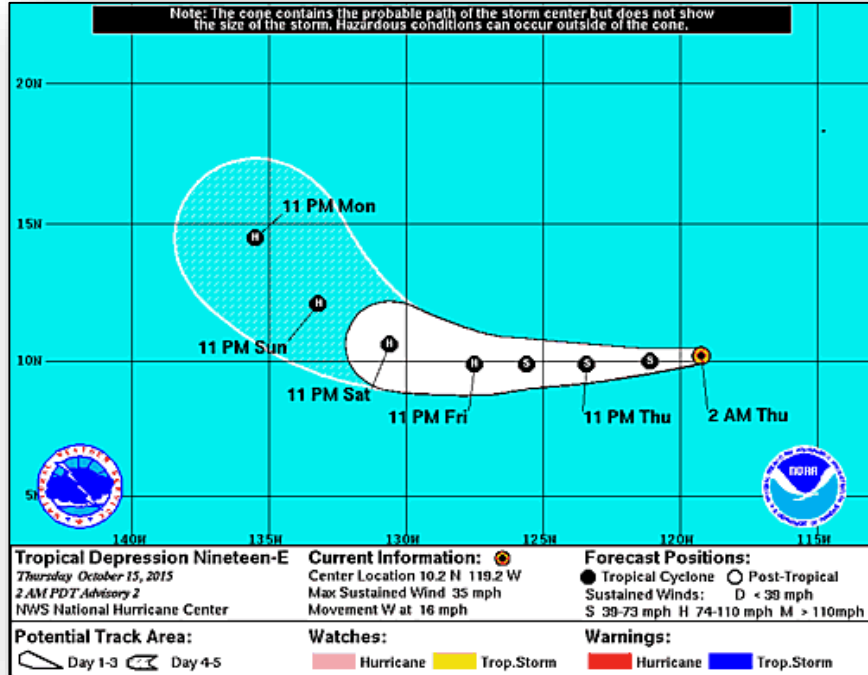
# 2 Day Tropical Outlook – Eastern Pacific



FEMA



# Eastern Pacific – TD Nineteen-E

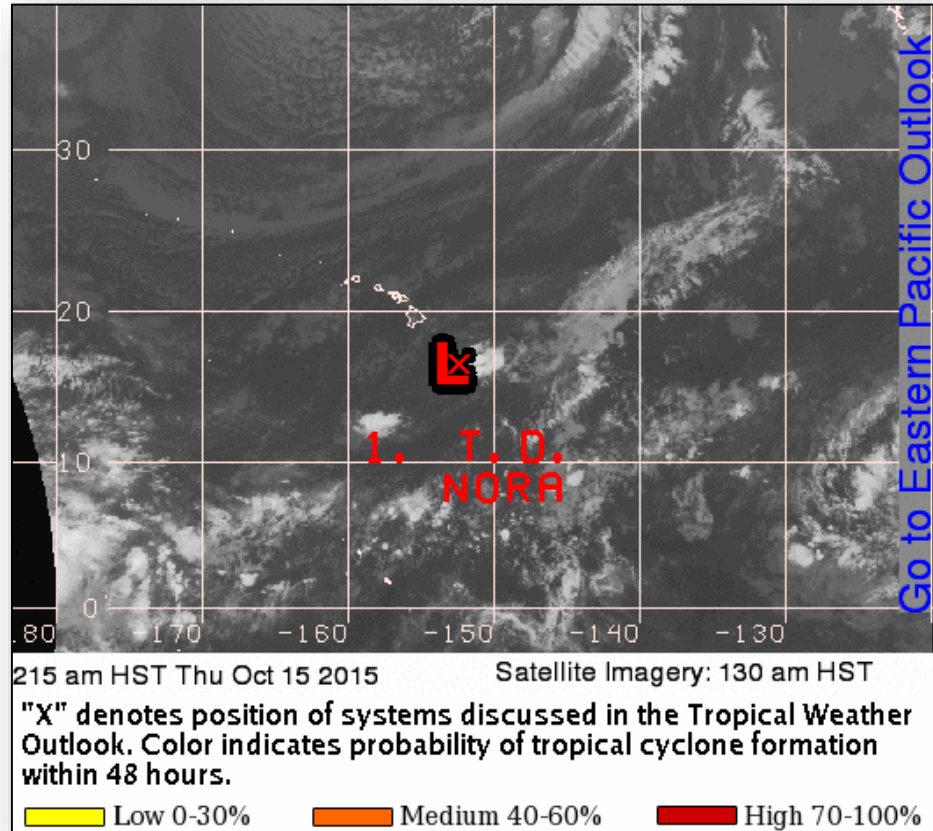


## TD NINETEEN-E Advisory #2 (As of 5:00 a.m. EDT)

- Located 1,070 miles SW of Baja California, Mexico
- Moving W near 16 mph; maximum sustained winds 35 mph
- Decrease in forward speed expected during the next few days
- Strengthening forecast over the next 48 hours; expected to become a tropical storm and a hurricane over the weekend
- No coastal watches or warnings in effect



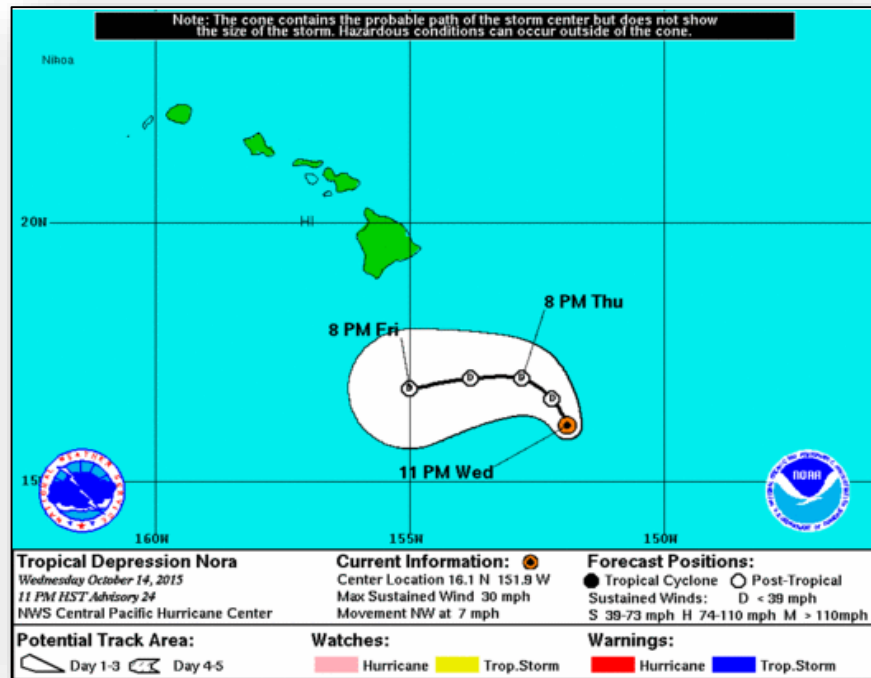
# 2 Day Tropical Outlook – Central Pacific



# Central Pacific – Tropical Depression Nora



FEMA

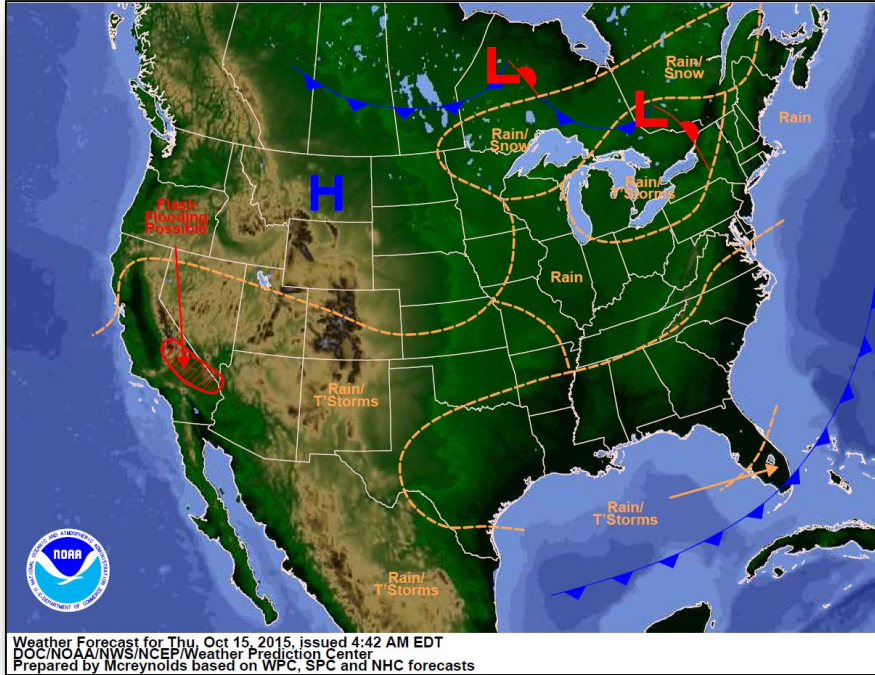


## TD Nora (Advisory #24 as of 5:00 a.m. EDT)

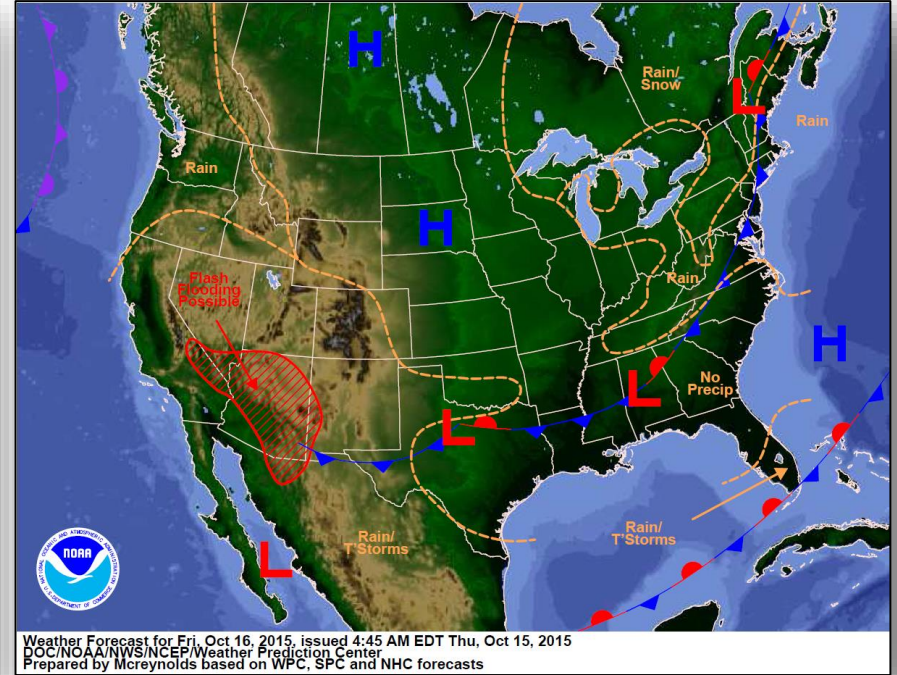
- Located 325 miles SE of Hilo, HI; moving NW at 7 mph
- Maximum sustained winds near 30 mph with higher gusts
- Continued weakening expected; remnant low today
- No coastal watched or warnings in effect



# National Weather Forecast

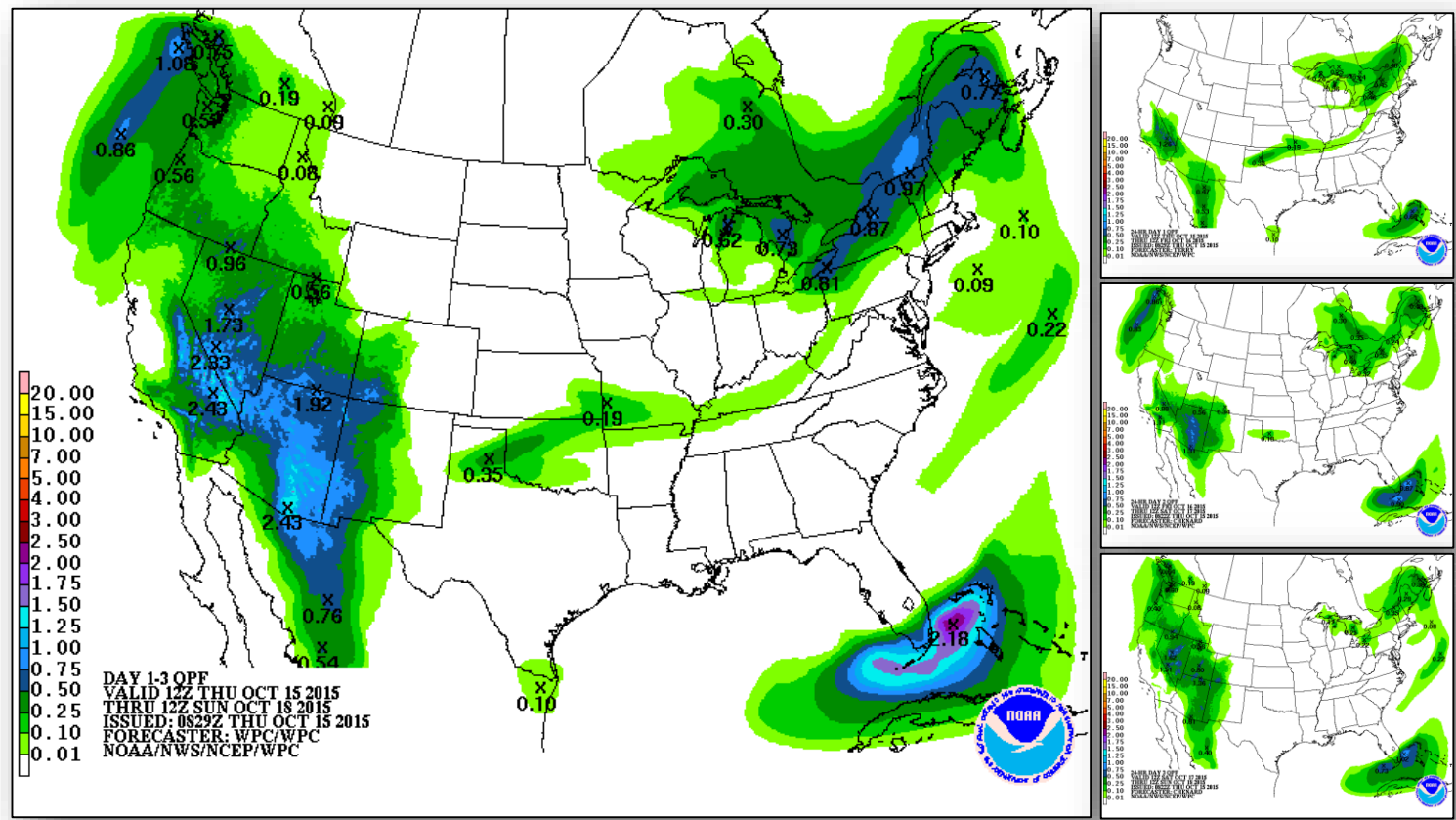


*Today*

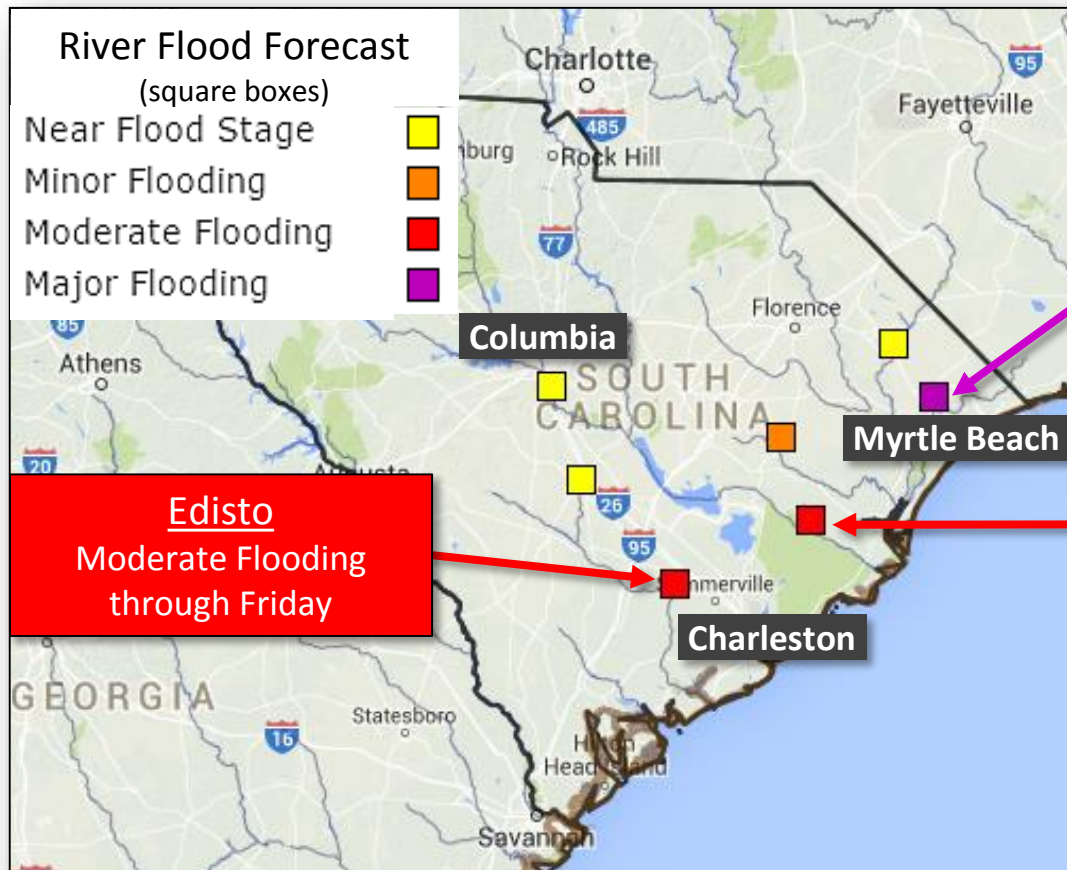


*Tomorrow*

# Precipitation Forecast, 1-3 Day



# River Floods – South Carolina



Waccamaw  
Major Flooding through the  
Weekend

Santee  
Moderate Flooding through  
early Friday

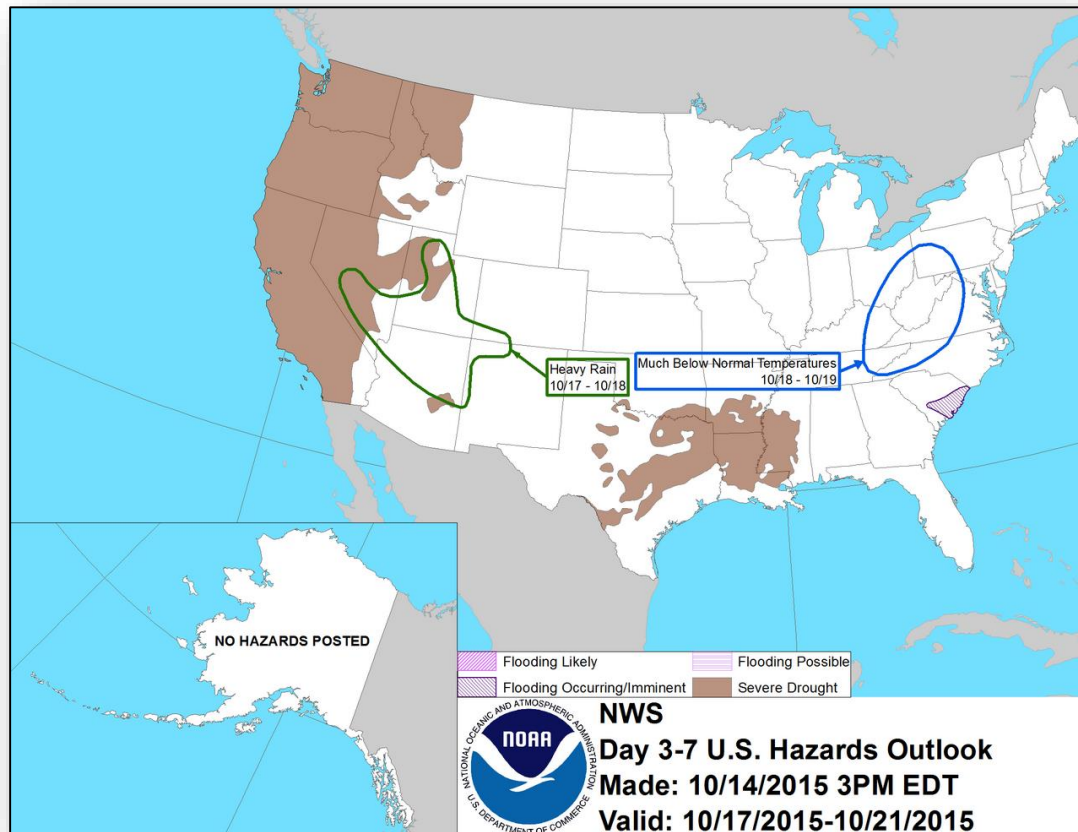
\*River flooding will persist  
for a few weeks, especially  
in eastern SC

Edisto  
Moderate Flooding  
through Friday

# Hazard Outlook, October 17-21



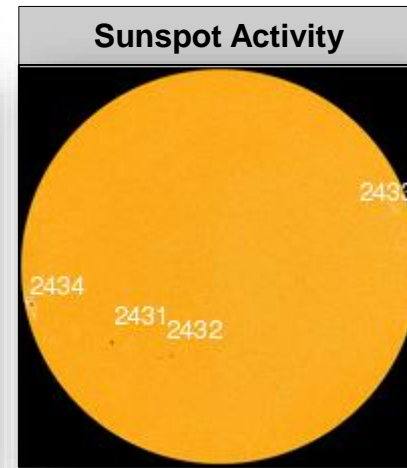
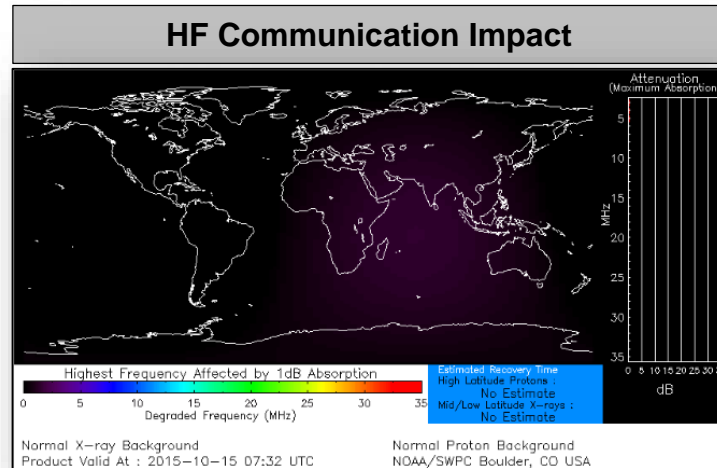
FEMA





# Space Weather

	Past 24 Hours	Current	Next 24 Hours
Space Weather Activity:	Minor	None	Minor
• Geomagnetic Storms	G1	None	G1
• Solar Radiation Storms	None	None	None
• Radio Blackouts	None	None	None



# Hidden Pines Fire – TX



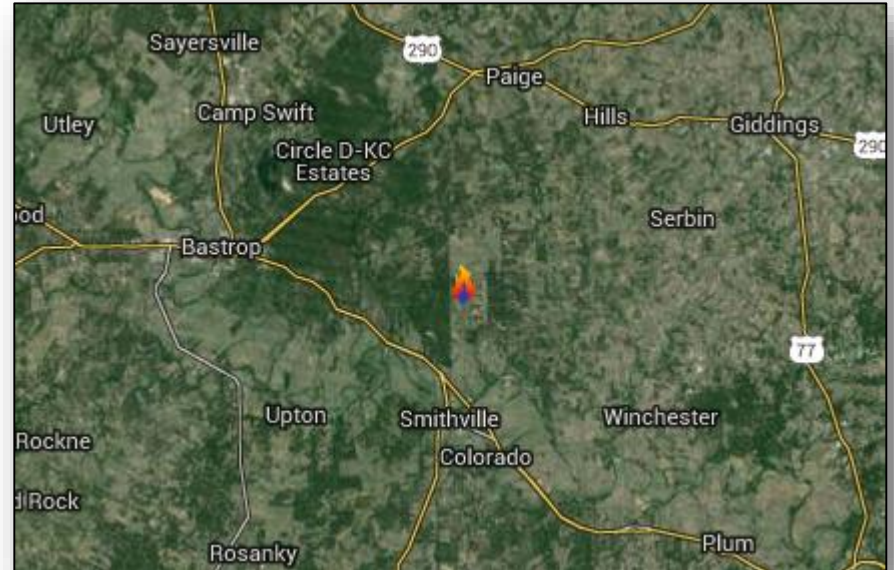
Fire Name (County)	Location	Acres burned	% Contained	FMAG	Evacuations	Structures Lost / Threatened	Fatalities / Injuries
Hidden Pines (Bastrop)	Smithville, TX (pop. 4,000)	2,500	10%	FEMA-XXXX-FM-TX Approved Oct 14	Mandatory/Voluntary (200)	9 homes / 180 (100 homes)	0/0

## Current Situation:

- The fire started on October 13, 2015
- 9 homes destroyed
- The fire is threatening 100 primary homes, 80 buildings, infrastructure, utilities, and equipment around Smithville, TX
- Voluntary/Mandatory evacuation orders issued

## Response:

- TX SEOC at Normal Operations
- FEMA Region VI at Normal Operations
- FMAG approved on October 14, 2015





# FMAG Requests and Declarations



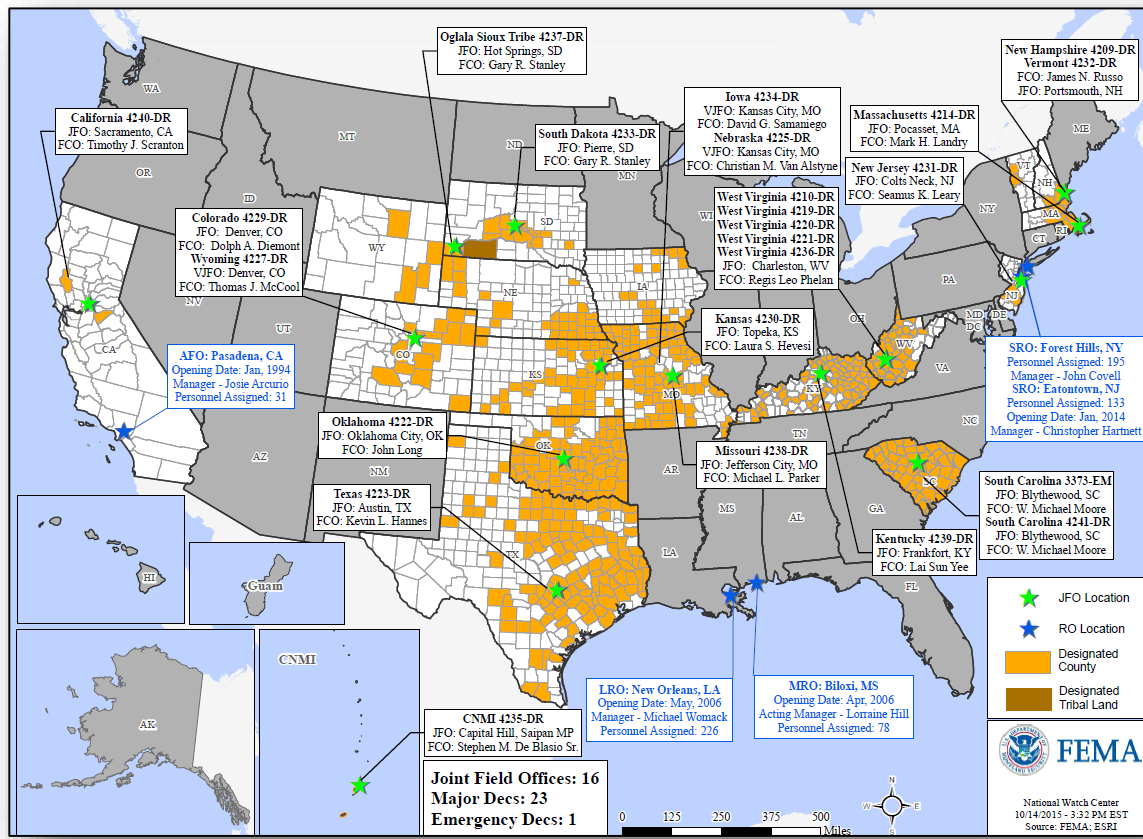
Action (since last report)			Total	FMAG No. and State	
Requests DENIED			0		
Requests APPROVED			1	FM-XXXX-TX Hidden Pines Fire	
Approved FMAG Data					
Year	Current YTD	MTD	Monthly Average	Cumulative Acres Burned YTD	Cumulative Denied FMAGs YTD
2016	2	2	≤ 1	3,000	0
Year	Total Previous FY	++ Yearly Average		Total Acres Burned Previous Year	Total Denied FMAGs Previous Year
2015	33	36		250,658	2
* Reflects the 3-year average for current month/ ** Reflects 3-year total average					

# Disaster Requests & Declarations



Declaration Requests in Process		Requests APPROVED (since last report)	Requests DENIED (since last report)
4	Date Requested	0	0
Navajo Nation – EM Chemical Spill	October 2, 2015		
WA – DR Windstorm	October 7, 2015		
WA – DR Wildfires	October 7, 2015		
IN – DR (Appeal) Severe Storms, Tornadoes, Straight-line Winds, & Flooding	October 7, 2015		

# Open Field Offices as of October 15



# Joint Preliminary Damage Assessments

Region	State / Location	Event	I/PA	Number of Counties		Start – End
				Requested	Complete	
IV	NC	Flooding September 25, 2015	PA	9 (-1)	0	10/14-TBD

# FEMA Readiness – Deployable Teams /Assets



Deployable Teams/Assets									
Resource	Status	Total	FMC Available		Partially Available	Not Available	Detailed, Deployed, Activated	Comments	Rating Criterion
FCO		34	13	38%	0	4	17		OFDC Readiness: FCO    Green    Yellow    Red Type 1   3+            2            1 Type 2   4+            3            2 Type 3   4              3            2 FDRC       3            2            1
FDRC		8	2	25%	0	1	5		
US&R		28	26	93%	1	1	0	VA TF2 (Yellow) – in post-deployment rehab NM-TF1 (Red) – Personnel shortages	<ul style="list-style-type: none"> <li>• Green = Available/FMC</li> <li>• Yellow = Available/PMC</li> <li>• Red = Out-of-Service</li> <li>• Blue = Assigned/Deployed</li> </ul>
National IMAT		3	1	33%	0	0	2	N-IMAT East-1 and N-IMAT West deployed to SC	<ul style="list-style-type: none"> <li>• Green: 3 avail</li> <li>• Yellow: 1-2 avail</li> <li>• Red: 0 avail (<i>Individual N-IMAT red if 50% of Section Chiefs and/or Team Leader is unavailable for deployment.</i>)</li> </ul>
Regional IMAT		13	3	23%	2	0	8	<u>Deployed:</u> RI (Team 1) Deployed to SC RIV (Team 1) Deployed to SC; IMAT (Team 2) deployed to SC RVI (Team 2) Deployed to TX RVII Deployed to MO RVIII (Team 1) Deployed to CO RIX (Team 1) Deployed to Guam/CNMI; (Team 2) Deployed to CA <u>Partially Mission Capable (PMC):</u> RV (Yellow) PMC for Personnel shortages) RX (Yellow) PMC	<ul style="list-style-type: none"> <li>• Green: 7 or more avail</li> <li>• Yellow: 4 - 6 teams available</li> <li>• Red: &gt; 8 teams deployed/unavailable</li> </ul> <i>R-IMAT also red if TL Ops/Log Chief is unavailable &amp; has no qualified replacement</i>
MCOV		59	25	42%	0	10	24	10 MCOVs deployed to CA (FEMA-4240-DR) 14 MCOVs deployed to SC; additional 6 requested (FEMA-4241-DR)	<ul style="list-style-type: none"> <li>• Green = 80 – 100% avail</li> <li>• Yellow = 60 – 79% avail</li> <li>• Red = 59% or below avail</li> <li>• Readiness remains 95%</li> </ul>

# FEMA Readiness – National/Regional Teams



National/Regional Teams									
Resource	Status	Total	FMC Available		Partially Available	Not Available	Status	Comments	Rating Criterion
NWC		5	5	100%	0	0	Not Activated		<ul style="list-style-type: none"> <li>• Green = FMC</li> <li>• Yellow = PMC</li> <li>• Red = NMC</li> </ul>
NRCC		2	344	89%	0	44	Not Activated		
HLT		1	N/A	N/A	0	0	Activated		
DEST							Not Activated		
RRCCs		10	10	100%	0	0	Activated	Region IV – Deactivated	
RWCs/MOCs		10	10	100%	0	0	Activated	Region IV – Returned to Watch Steady/State 24/7 Region IX – Enhanced Watch at 9:30 a.m. EDT today	





Great ShakeOut  
Earthquake Drills



FEMA

**Get Ready to ShakeOut at 10:15 a.m. EDT on October 15**

- All FEMA employees are asked to participate in the Great ShakeOut earthquake drill by taking action to **Drop**, **Cover**, and **Hold On**
- Practice and be ready if an earthquake happens!
- Individuals with disability/or access/functional needs are also encouraged to participate in the drill

**DROP** to the ground on your hands and knees

Take **COVER** under a table or desk

**HOLD ON** to your shelter as if a major earthquake were happening (stay down for at least 60 seconds)





# FEMA

**FEMA's mission is to support our citizens and first responders to ensure that as a nation we work together to build, sustain, and improve our capability to prepare for, protect against, respond to, recover from, and mitigate all hazards.**