



FEMA

Daily Operations Briefing

Monday, August 31, 2015

8:30 a.m. EDT

Significant Activity: Aug 30-31



Significant Events: Hurricane Ignacio

Tropical Activity:

- Atlantic: Hurricane Fred
- Eastern Pacific: Hurricane Jimena, Disturbance 1
- Central Pacific: Hurricane Kilo; Hurricane Ignacio
- Western Pacific: No significant activity affecting U.S. territories

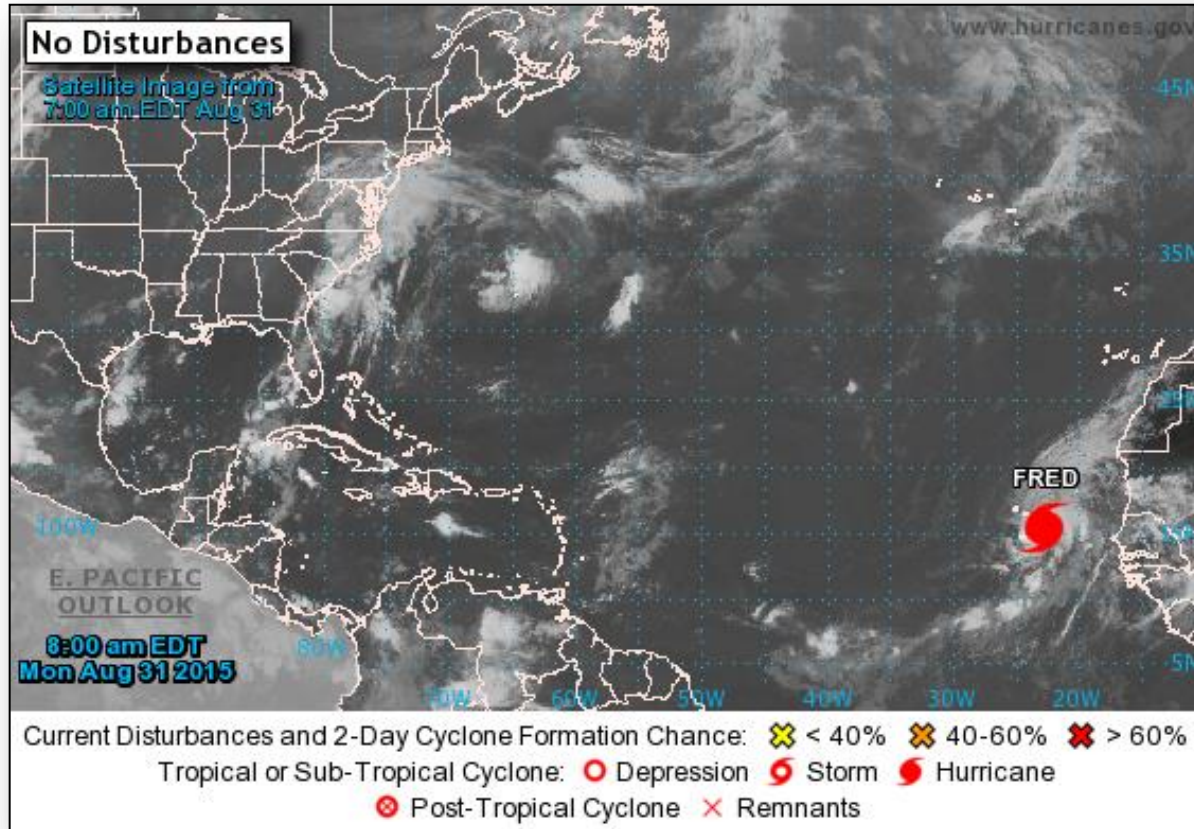
Significant Weather:

- Flash Flooding – Coastal Carolinas, Eastern Florida
- Red Flag Warnings – None
- Elevated/Critical Fire Weather areas – None
- Space weather: Space weather for the past 24 hours has been minor - radio blackouts reaching the R1 level occurred; No space weather for the next 24 hours is predicted

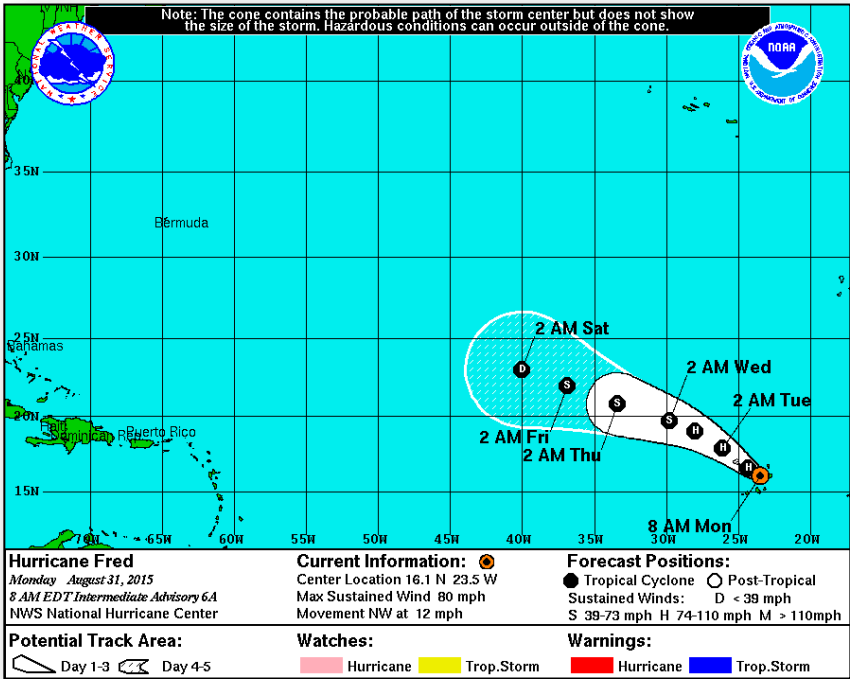
Declaration Activity:

- FMAG for Tepee Springs Fire, ID

2-Day Tropical Outlook – Atlantic



Atlantic – Hurricane Fred



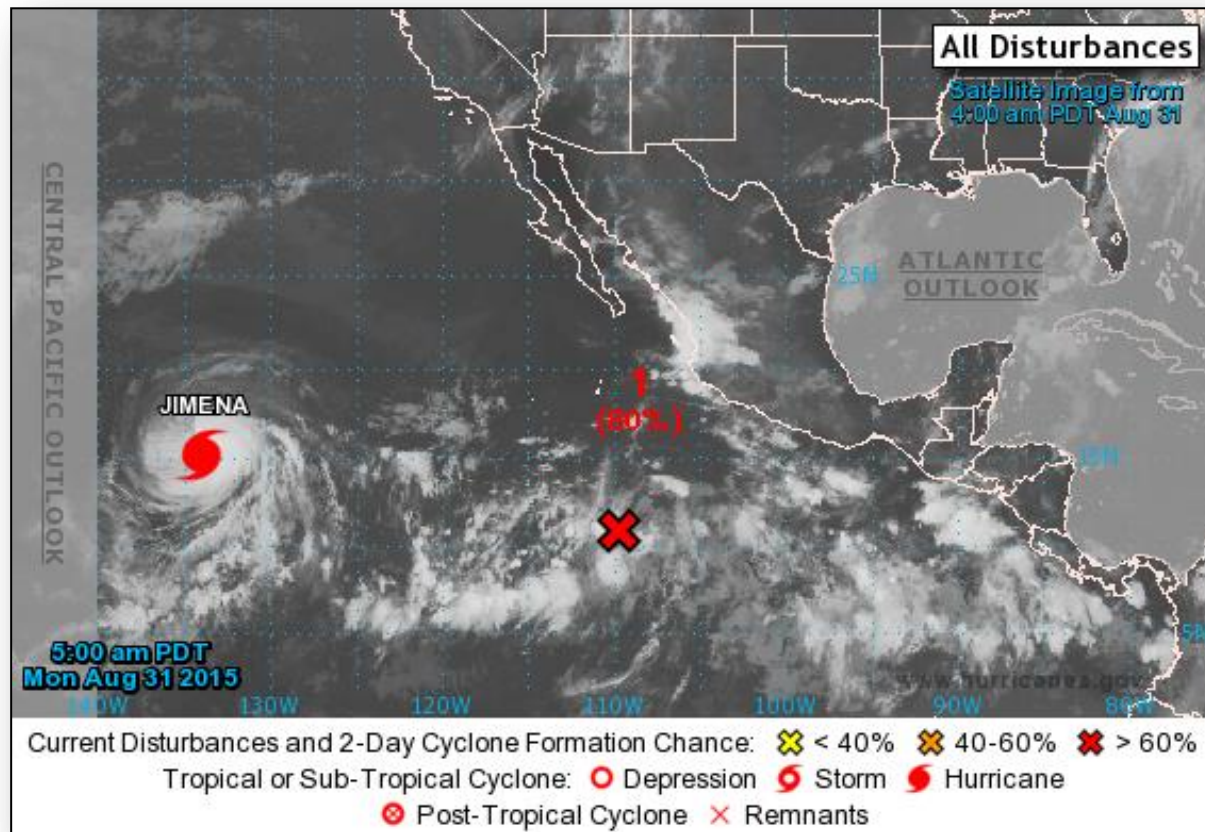
Advisory #6a: (As of 8:00 a.m. EDT)

- Located 40 miles S of the Cape Verde Islands
- Maximum sustained winds at 80 mph with higher gusts
- Moving NW at 12 mph
- NW is expected to continue through Tuesday
- Hurricane-force winds extend outward up to 15 miles from the center
- Tropical storm-force winds extend outwards up to 80 miles
- Hurricane Warning is in effect for the Cape Verde Islands

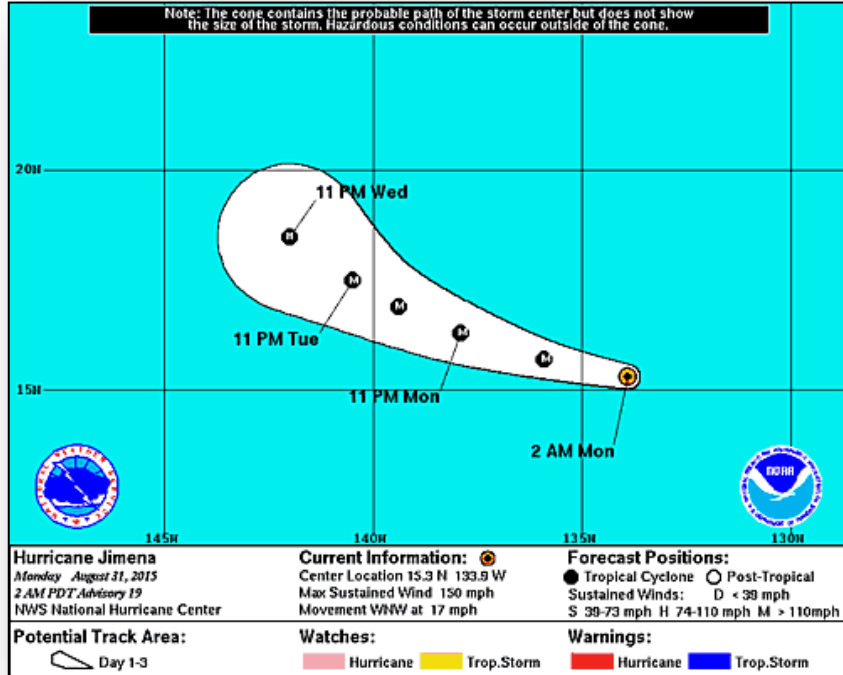
2-Day Tropical Outlook – Eastern Pacific



FEMA



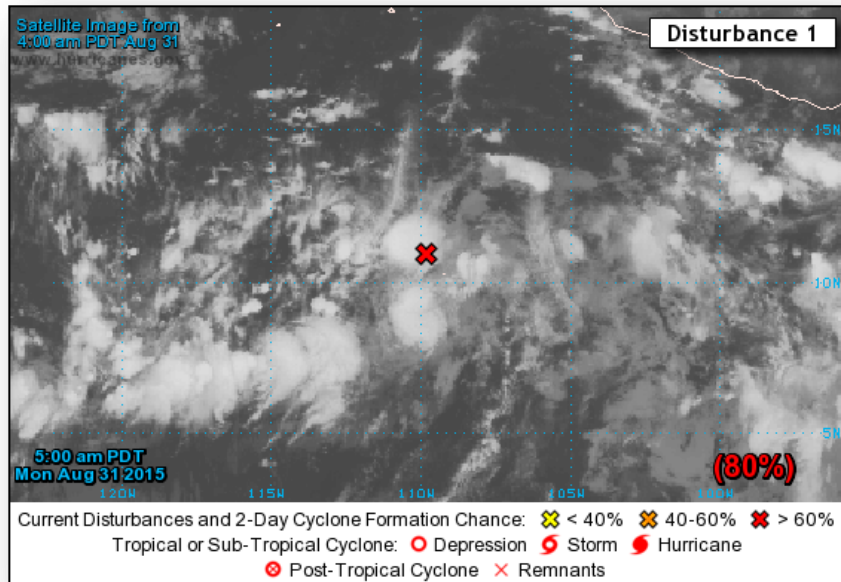
Eastern Pacific – Hurricane Jimena



Advisory #19: (as of 5:00 a.m. EDT)

- Located 1,430 miles E of Hilo, Hawaii
- Moving WNW at 17 mph
- Maximum sustained winds 150 mph (Cat 4)
- Hurricane expected to continue in same direction at slower forward speed
- Slow weakening is forecast during the next 48 hours
- Hurricane-force winds extend outward up to 60 miles
- Tropical storm-force winds extend outward up to 175 miles
- No coastal watches or warnings in effect

Two Day Tropical Outlook – Eastern Pacific



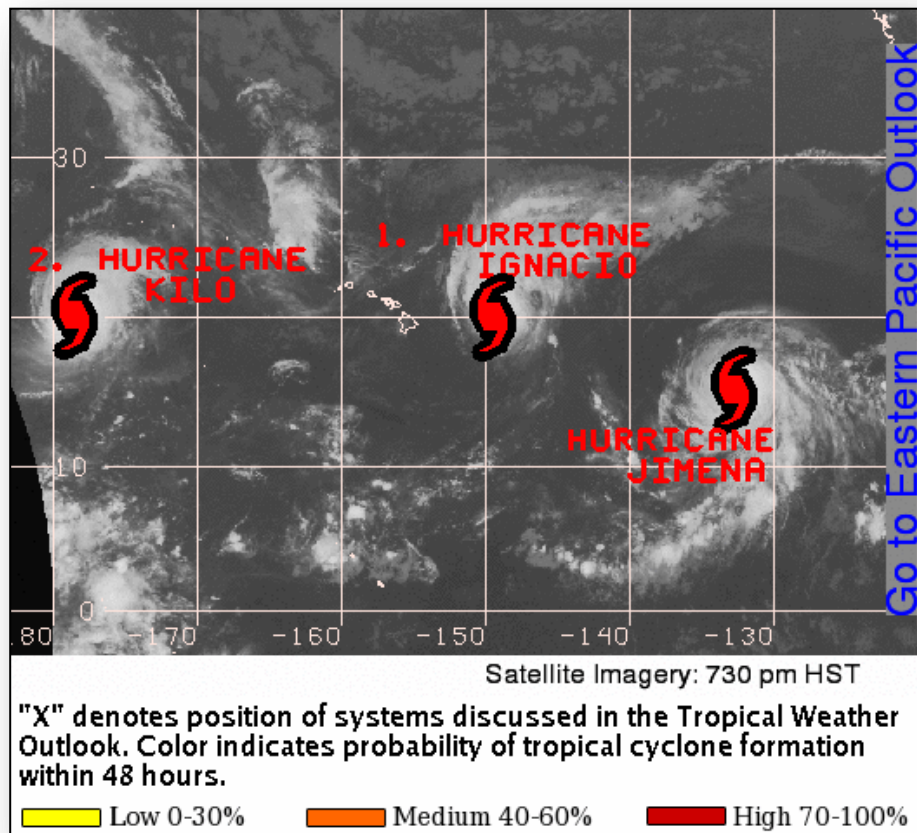
Disturbance 1: *(as of 8:00 a.m. EDT)*

- Located 650 miles SSW of Manzanillo, Mexico
- Moving NW at 10 mph
- Environmental conditions are conducive for development
- Likely to become a tropical depression during the next day or two
- Formation chance through 48 hours: High (80%)
- Formation chance through 5 days: High (90%)

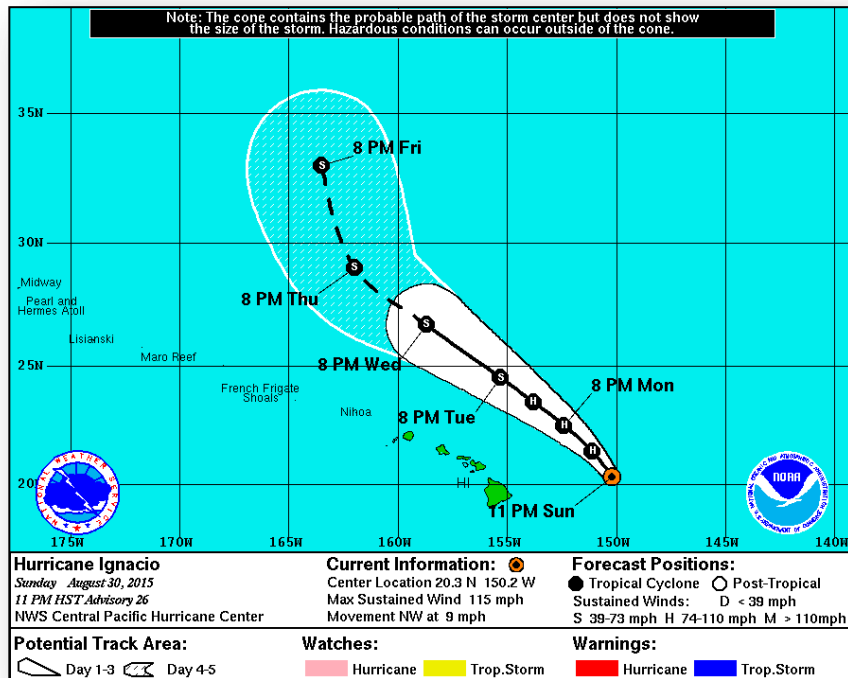
2-Day Tropical Outlook – Central Pacific



FEMA



Central Pacific – Hurricane Ignacio



Advisory #26: (as of 5:00 a.m. EDT)

- Located 320 miles E of Hilo, HI, moving NW at 9 mph
- Maximum sustained winds 115 mph (Cat 3)
- Motion expected to continue for the next couple of days
- Will pass E and NE of the main Hawaiian islands over the next couple of days
- Rapid weakening is expected through Monday
- Hurricane-force winds extend outward up to 45 miles from center
- Tropical storm-force winds extend 175 miles
- No watches and warnings for HI

State/Local Response:

- HI EOC at Watch/Steady State
- No unmet needs identified; no requests for FEMA assistance

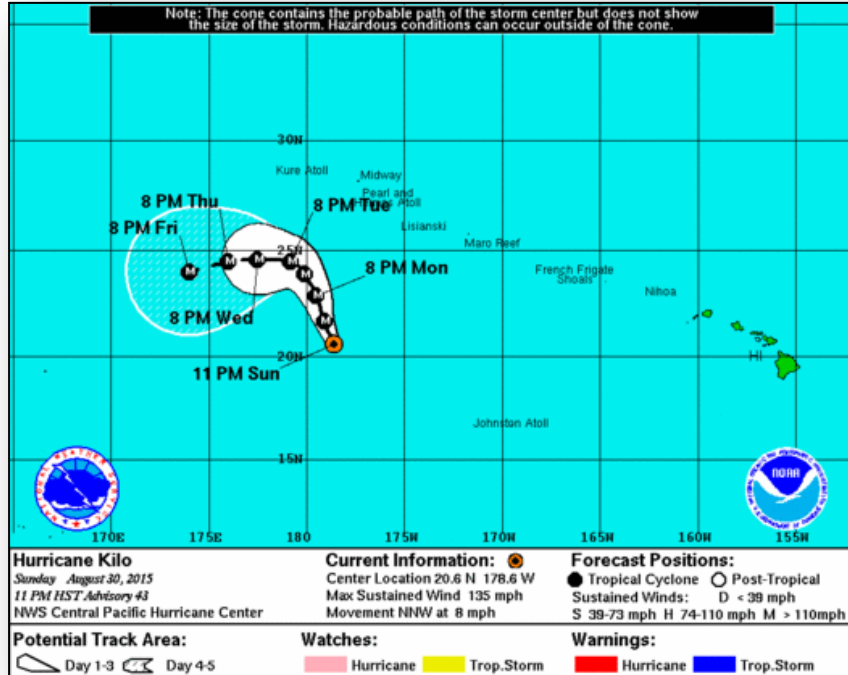
FEMA Region IX Response:

- RWC activated to Enhanced Watch
- RRCC at Watch/Steady State & will not activate today
- Specific IMAT personnel deployed

FEMA HQ Response:

- NRCC at Level III; NWC at Watch/Steady State (24/7)
- FEMA Logistics: ISB/FSA Advance Party ALPHA Team deployed to DC Hawaii

Central Pacific – Hurricane Kilo (*FINAL*)



Advisory #43: (As of 5:00 a.m. EDT)

- Located 530 miles S of Midway Island
- Maximum sustained winds of 135 mph (Cat 4)
- Moving NNW at 8 mph
- General motion expected to continue next 48 hours
- Slight decrease in forward speed
- Hurricane-force winds extend outward 35 miles from center
- Tropical storm-force winds extend outward 160 miles
- No coastal watches and warnings in effect

FMAG Requests and Declarations



Action (since last report)			Total	FMAG No. and State	
Requests DENIED			0		
Requests APPROVED			1	TePee Springs Fire FEMA-5110-FM-ID Approved Aug 29	
Approved FMAG Data					
Year	Current YTD	MTD	Monthly Average	Cumulative Acres Burned YTD	Cumulative Denied FMAGs YTD
2015	29	18	11	167,658	2
Year	Total Previous FY	++ Yearly Average		Total Acres Burned Previous Year	Total Denied FMAGs Previous Year
2014	31	37		152,648	2
* Reflects the 3-year average for current month/ ** Reflects 3-year total average					

TePee Springs Fire – ID



Fire Name (County)	Location	Acres burned	% Contained	FMAG	Evacuations	Structures Lost / Threatened	Fatalities / Injuries
TePee Springs (Idaho County)	Near Riggins, ID (pop. 413)	78,130 (+29,562)	25%	FEMA-5110-FM-ID Approved Aug 29	Mandatory/Voluntary 413 (w/60 displaced)	0/300 homes	0/0

Current Situation:

- Approximately 80 percent of the threatened homes are primary residences and 20 percent are secondary homes
- Potential impacts to critical public infrastructure to include roads, bridges, cell towers, radio towers, power distribution lines, water, sewer and various local businesses in the area
 - Also threatens wildlife habitat for salmon, steelhead trout, bull trout and big horn sheep
- Mandatory evacuation of 413 people (60 displaced)

Response:

- ID EOC is at Phase I (Standby) for Wildfire support (M-F; 10:00 a.m. to 6:30 p.m. EDT)



Wildfire Summary



Fire Name (County)	FMAG #	Acres burned	% Contained	Evacuations (Residents)	Structures Threatened	Structures Damaged/ Destroyed	Fatalities/ Injuries
Washington (3)							
Kettle Complex (Ferry County)	FEMA-5101-FM-WA Approved Aug 14 FEMA-5108-FM-WA (Renner Fire) Approved Aug 21	66,084	17%	Mandatory/ Voluntary 334	4,130 (2,600 homes)	0/2 (1 home)	0/4
Colville Complex (Stevens County)	FEMA-5103-FM-WA Approved Aug 14	11,522	45%	None	449 (294 homes)	22/ 18 (2 homes)	0/1
Okanogan Complex (Okanogan County)	FEMA-5104-FM-WA Approved Aug 14 FEMA-5106-FM-WA (Twisp River Fire) Approved Aug 19	344,772 (-160,603)	22-30%	Mandatory/ Voluntary 688	11,625 (10,400 homes)	0/318 (123 homes)	3/6
Oregon (1)							
Grizzly Bear Complex (Wallowa County)	FEMA-5107-FM-OR Approved Aug 21	74,471 (+2,512)	17% (+7)	Evacuations Lifted	470 (400 homes)	0/ 33 (5 homes)	0/6
Idaho (1)							
TePee Springs Fire (Idaho County)	FEMA-5110-FM-ID Approved Aug 29	78,130 (+29,562)	25%	Mandatory/ Voluntary 431	300 homes	0/0	0/0

Disaster Requests & Declarations



Declaration Requests in Process		Requests APPROVED (since last report)	Requests DENIED (since last report)
1	Date Requested	0	0
FL – DR Severe Storms and Flooding	August 25, 2015		

Disaster Amendments

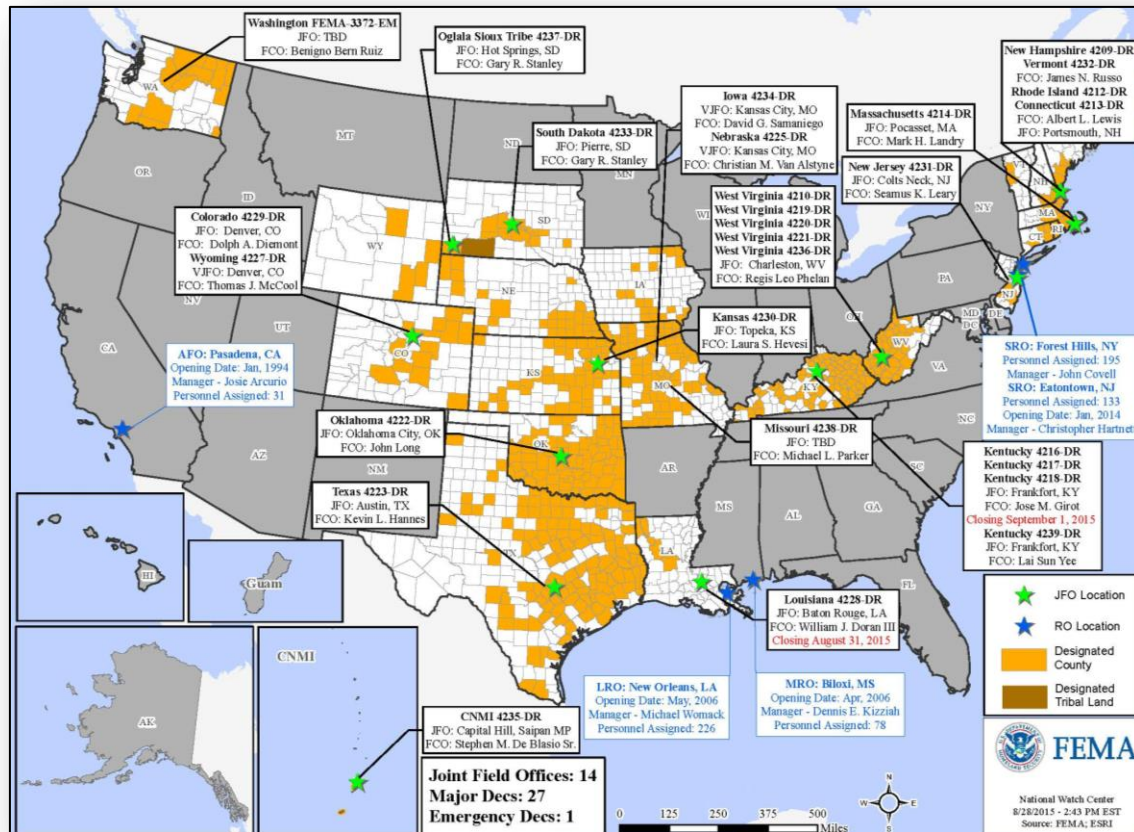


Amendment	Effective Date	Action
Amendment No. 1 to FEMA-4239-DR-KY	August 28, 2015	Adds 3 counties for Individual Assistance

Open Field Offices as of Aug 31



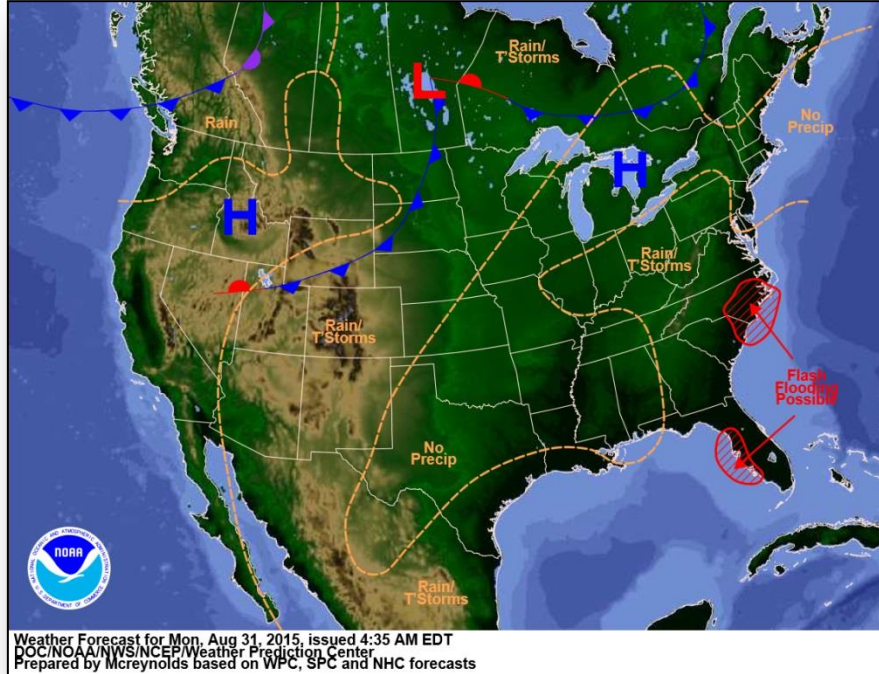
FEMA



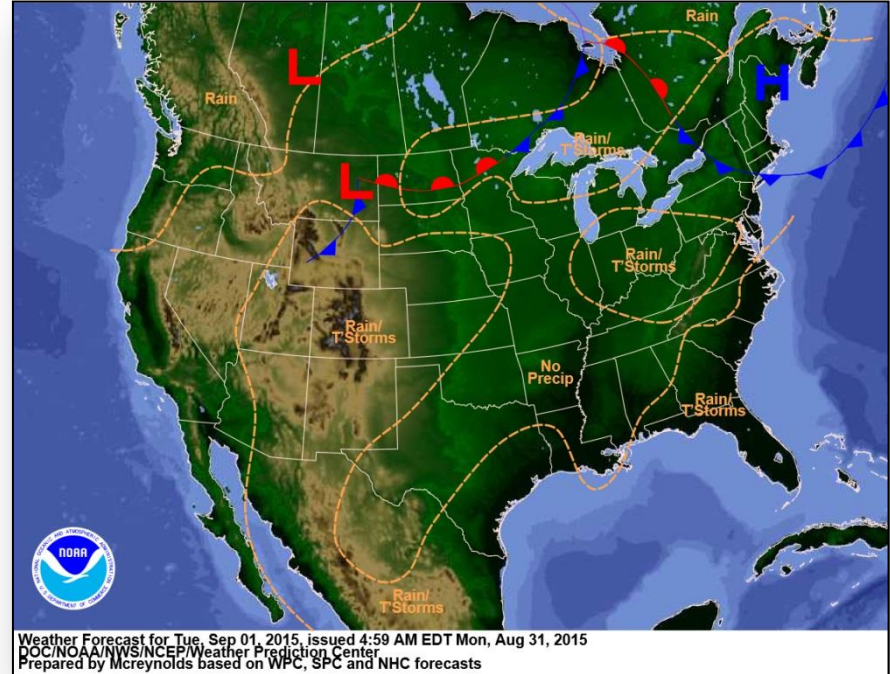
Joint Preliminary Damage Assessments

Region	State / Location	Event	I/PA	Number of Counties		Start – End
				Requested	Complete	
IV	FL	Heavy Rain & Flooding July 26, 2015 & continuing	IA	5	5	8/12 - 8/19
			PA	5	0	TBD

National Weather Forecast

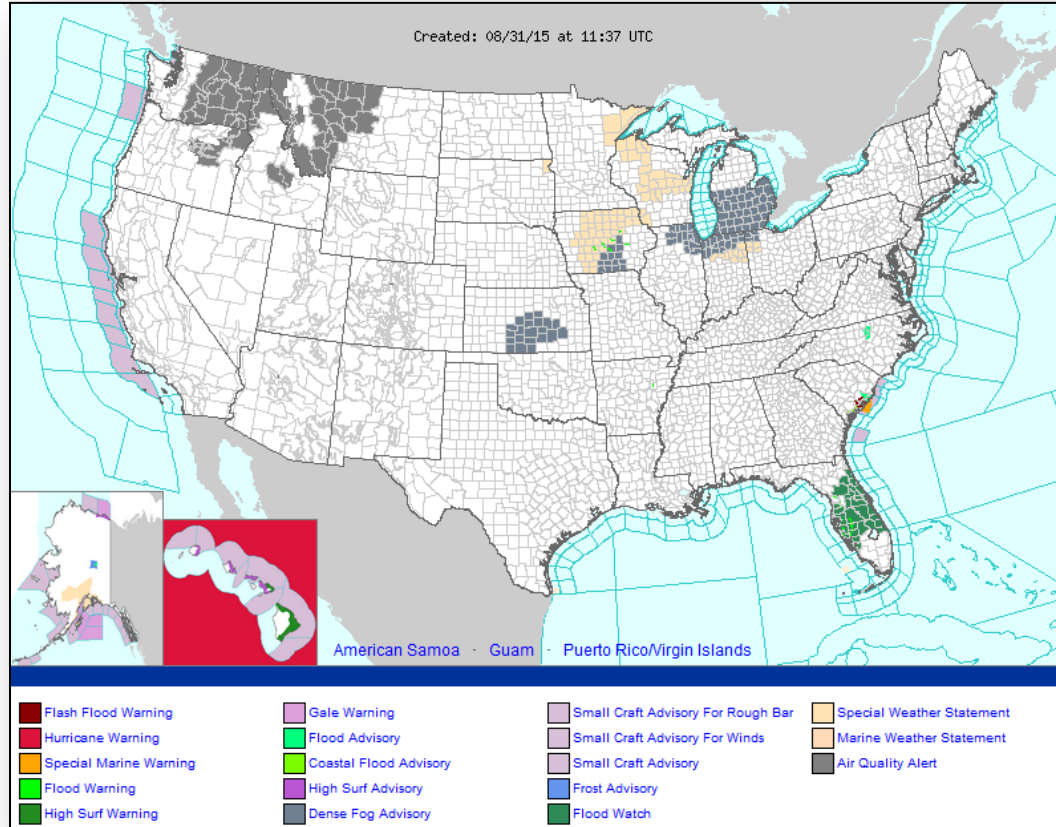


Today

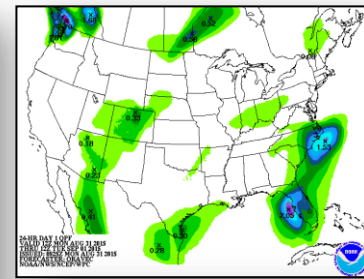
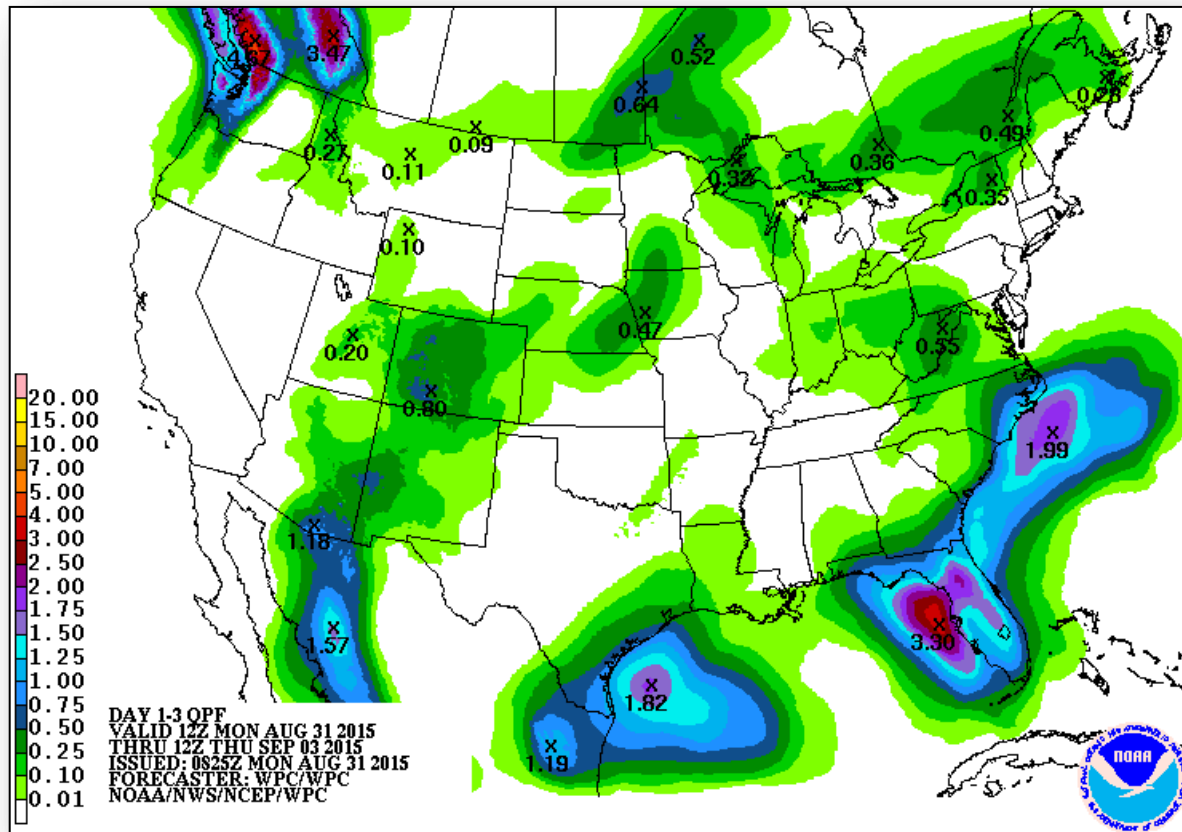


Tomorrow

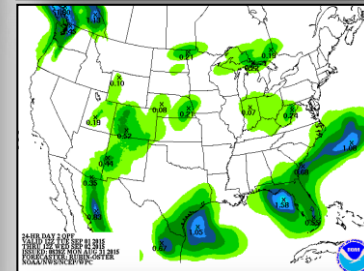
Active Watches/Warnings



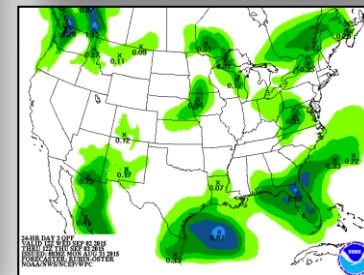
Precipitation Forecast, 1-3 Day



Day 1



Day 2

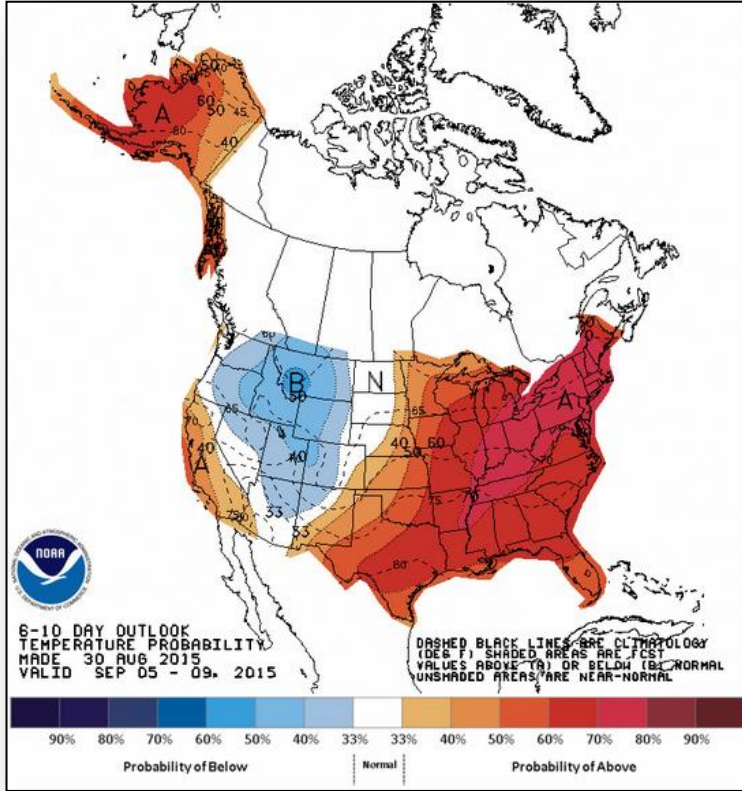


Day 3

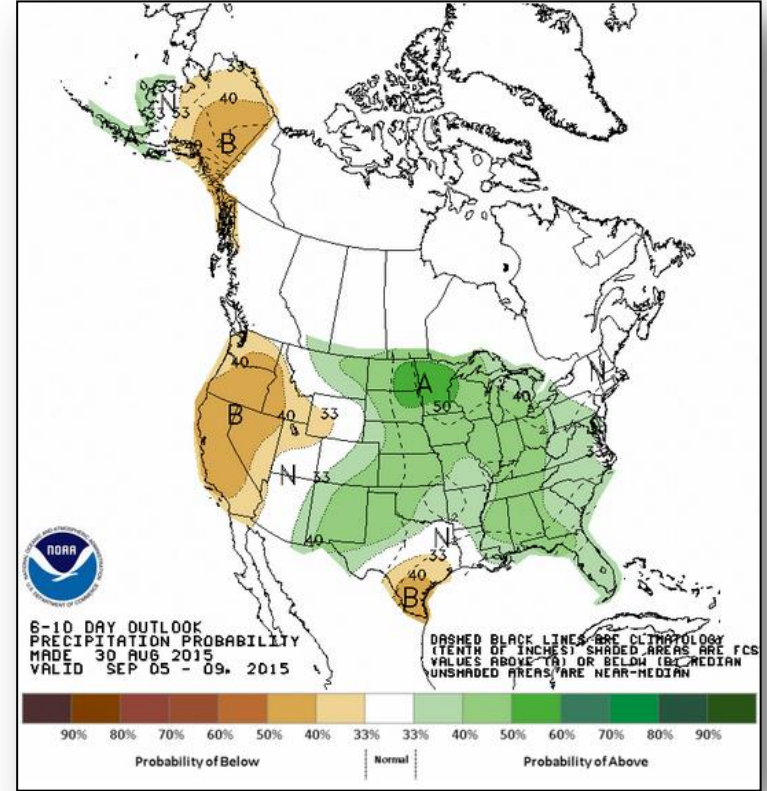
6-10 Day Outlooks



FEMA



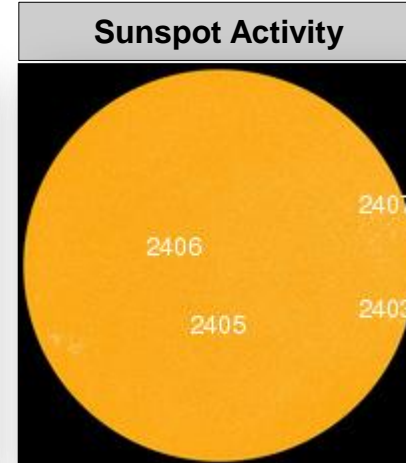
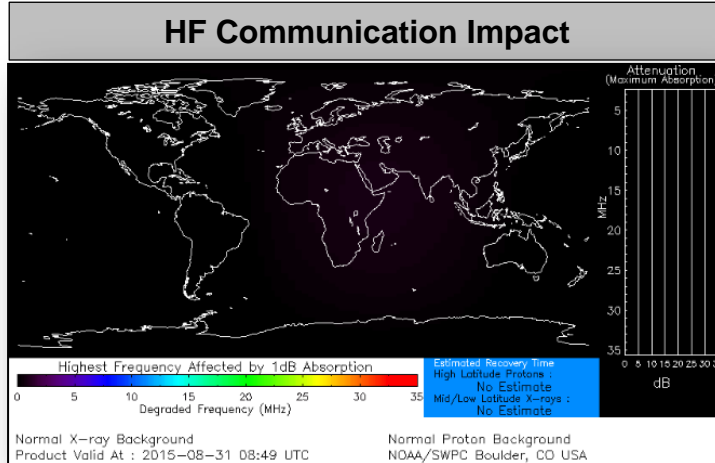
Temperature Probability



Precipitation Probability

Space Weather

	Past 24 Hours	Current	Next 24 Hours
Space Weather Activity:	Minor	None	None
• Geomagnetic Storms	None	None	None
• Solar Radiation Storms	None	None	None
• Radio Blackouts	R1	None	None



FEMA Readiness – Deployable Teams /Assets



Deployable Teams/Assets									
Resource	Status	Total	FMC Available		Partially Available	Not Available	Detailed, Deployed, Activated	Comments	Rating Criterion
FCO		35	9	26%	0	1	25		OFDC Readiness: FCO Green Yellow Red Type 1 3+ 2 1 Type 2 4+ 3 2 Type 3 4 3 2 FDRC 3 2 1
FDRC		9	5	56%	0	0	4		
US&R		28	27	96%	0	1	0	NM-TF1 (Red) – Personnel shortages	<ul style="list-style-type: none"> • Green = Available/FMC • Yellow = Available/PMC • Red = Out-of-Service • Blue = Assigned/Deployed
National IMAT		3	3	100%	0	0	0		<ul style="list-style-type: none"> • Green: 3 avail • Yellow: 1-2 avail • Red: 0 avail (<i>Individual N-IMAT red if 50% of Section Chiefs and/or Team Leader is unavailable for deployment.</i>)
Regional IMAT		13	4	31%	1	0	8	<p>Deployed: RI to NH/MA Aug 6 - TBD (training ,but FMC) RII IMAT-A detailed to Albany, NY, but available RIV (Team 1) deployed to KY RVI (Team 1 & 2) deployed to TX RVII deployed to MO RVIII (Team 1) deployed to SD & CO RIX (Teams 1 & 2) deployed to CNMI RX (Team 1) deployed to WA</p> <p>Partially Mission Capable: RV returned to region (Reconstituting)</p>	<ul style="list-style-type: none"> • Green: 7 or more avail • Yellow: 4 - 6 teams available • Red: > 8 teams deployed/unavailable <p><i>R-IMAT also red if TL Ops/Log Chief is unavailable & has no qualified replacement</i></p>
MCOV		59	47	80	0	12	0	MCOV unit returned from TX	<ul style="list-style-type: none"> • Green = 80 – 100% avail • Yellow = 60 – 79% avail • Red = 59% or below avail • Readiness remains 95%

FEMA Readiness – National/Regional Teams



National/Regional Teams									
Resource	Status	Total	FMC Available		Partially Available	Not Available	Status	Comments	Rating Criterion
NWC		5	5	100%	0	0	Not Activated		• Green = FMC • Yellow = PMC • Red = NMC
NRCC		2	344	89%	0	44	Activated	Level III (Blue Team)	
HLT		1	N/A	N/A	0	0	Activated		
DEST							Not Activated		
RRCCs		10	10	100%	0	0	Not Activated		
RWCs/MOCs		10	10	100%	0	0	Activated	Region IV Enhanced Watch Region IX Enhanced Watch	



FEMA

FEMA's mission is to support our citizens and first responders to ensure that as a nation we work together to build, sustain, and improve our capability to prepare for, protect against, respond to, recover from, and mitigate all hazards.