



FEMA

Daily Operations Briefing

Thursday, August 20, 2015

8:30 a.m. EDT

Significant Activity: August 19-20



Significant Events: None

Tropical Activity:

- Atlantic: Tropical Storm Danny; Disturbance 1 - Low (20%); Disturbance 2 - Low (near 0%)
- Eastern Pacific: Disturbance 1 – Low (near 0%)
- Central Pacific: Disturbance 1 – Medium (60%); Disturbance 2 – Low (10%); Disturbance 3 – Low (near 0%)
- Western Pacific: No significant activity affecting US territories or interests

Significant Weather:

- Flash flooding possible – portions of the Northeast, Mid-Atlantic, Southern Plains, and Lower Mississippi Valley
- Rain & thunderstorms: Possible for portions of the Southern Plains across to the Southeast up to the Northeast
- Red Flag Warnings: WA, OR, ID, MT, & CO
- Critical Fire Weather: WA & OR
- Space Weather: Past 24 hours – no space weather storms occurred; next 24 hours – none predicted

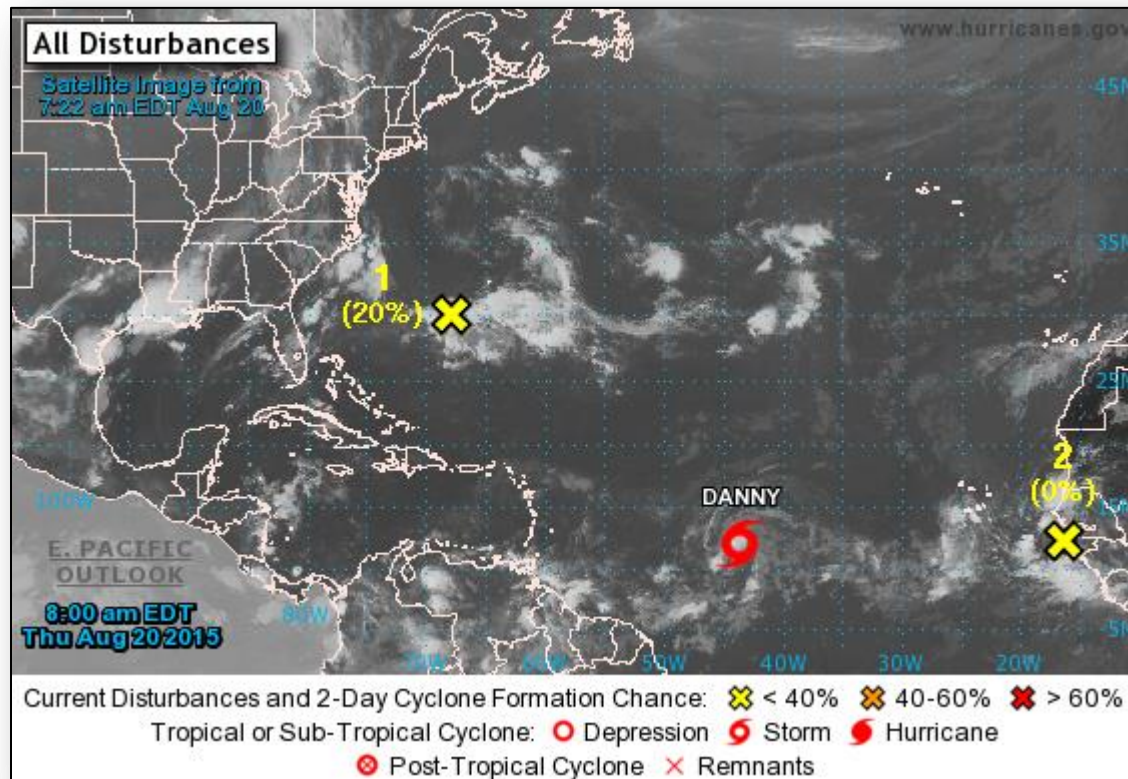
Declaration Activity

- FEMA-5106-FM-WA approved August 19, 2015
- Emergency Declaration Request for WA

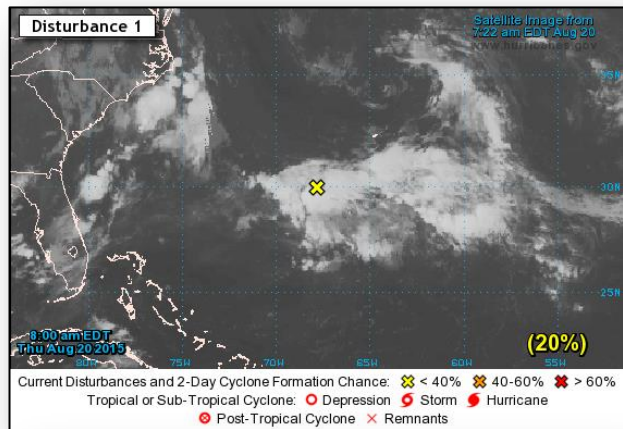
2-Day Tropical Outlook – Atlantic



FEMA

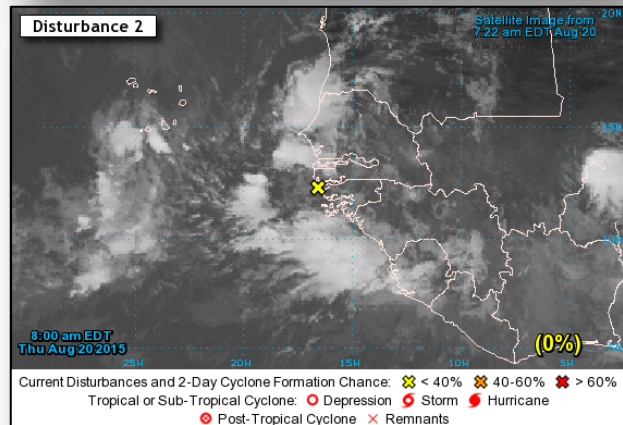


2-Day Tropical Outlook – Atlantic



Disturbance 1 (as of 8:00 a.m. EDT)

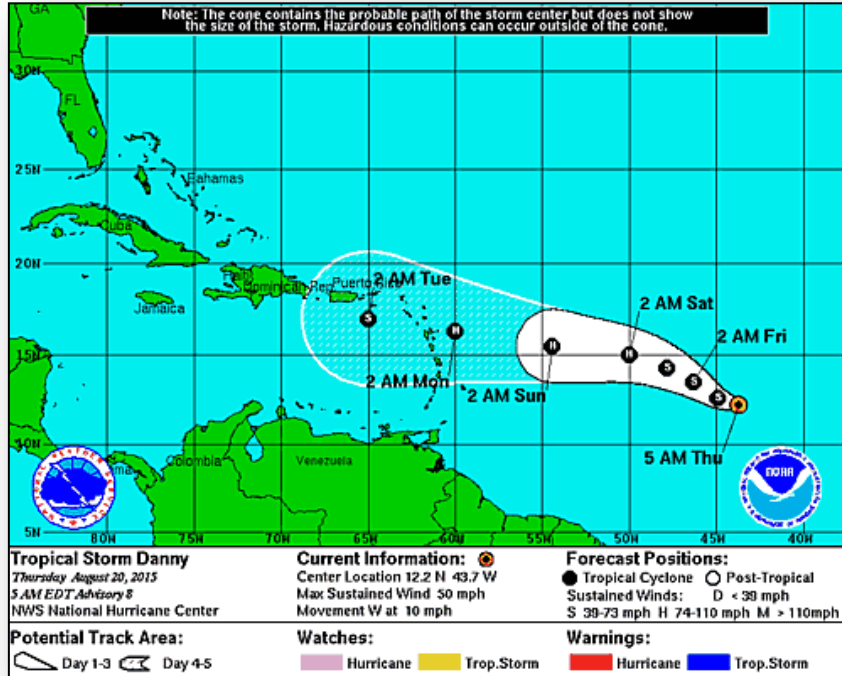
- A surface trough interacting with an upper-level low is producing an area of showers and thunderstorms
- Located to the southeast through southwest of Bermuda
- Moving slowly northward
- Environmental conditions support tropical or subtropical development over the weekend
- Formation chance through 48 hours: Low (20%)
- Formation chance through 5 days: Medium (60%)



Disturbance 2 (as of 8:00 a.m. EDT)

- A tropical wave near the coast of Africa is producing some disorganized showers and thunderstorms
- Moving west 15 to 20 mph
- Environmental conditions are forecast to become marginally favorable for some development
- Formation chance through 48 hours: Low (near 0%)
- Formation chance through 5 days: Low (20%)

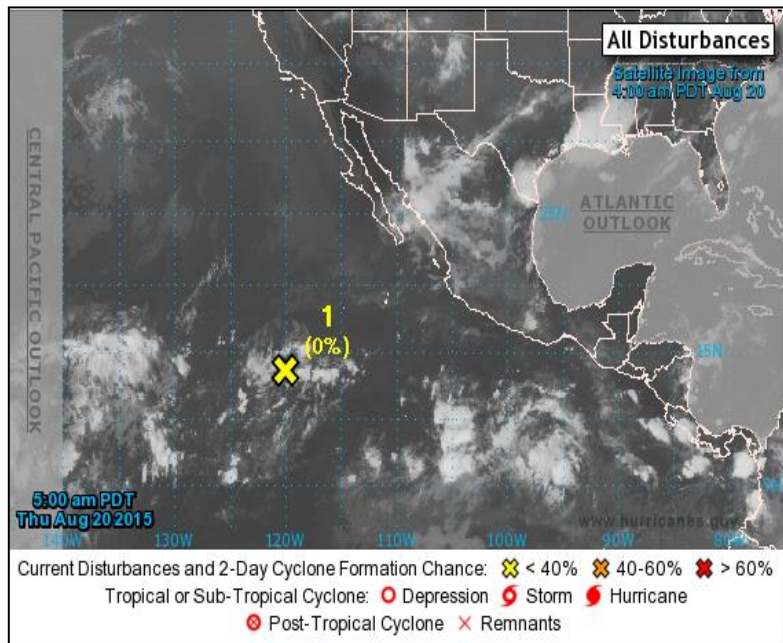
Atlantic – Tropical Storm Danny



Tropical Storm Danny: (Advisory #8 as of 5:00 a.m. EDT)

- Located about 1,200 miles E of the Lesser Antilles
- Maximum sustained winds near 50 mph; with higher gusts
- Moving toward the W at 10 mph
- System strengthening and could be a hurricane next 48 hours
- Tropical storm force winds extending outward 70 miles

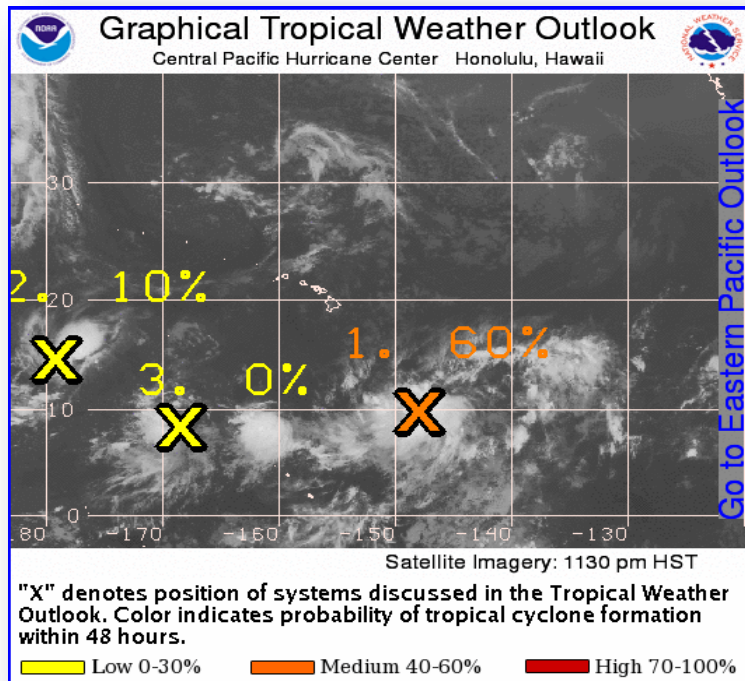
2-Day Tropical Outlook – Eastern Pacific



Disturbance 1: (as of 8:00 a.m. EDT)

- An area of disturbed weather moving W at about 10 MPH
- Located about 950 miles SW of the Southern tip of the Baja California peninsula
- Environmental conditions could become favorable for some development by the weekend
- Formation chance through 48 hours: Low (near 0%)
- Formation chance through 5 days: Low (30%)

Tropical Outlook – Central Pacific



Disturbance 1: (as of 5:00 a.m. EDT)

- Broad area of nearly stationary low pressure
- Located about 900 miles SSE of Hilo, Hawaii
- Formation chance through 48 hours: Medium (60%)

Disturbance 2: (as of 5:00 a.m. EDT)

- Broad area of nearly stationary pulsing convection
- Located about 1,500 miles WSW of Honolulu, Hawaii
- Formation chance through 48 hours: Low (10%)

Disturbance 3: (as of 5:00 a.m. EDT)

- Broad area of nearly stationary persistent convection
- Located about 1,200 miles SW of Honolulu, Hawaii
- Formation chance through 48 hours: Low (0%)

Twisp River Fire – WA



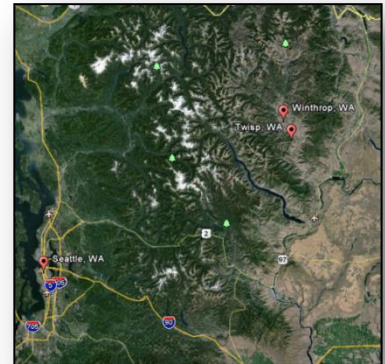
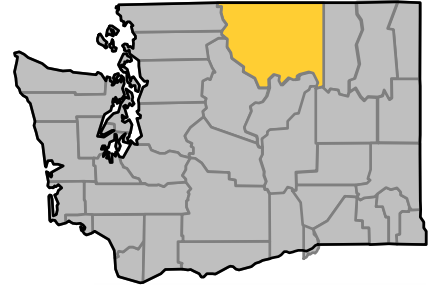
Fire Name (County)	Location	Acres burned	% Contained	FMAG	Evacuations	Structures Lost / Threatened	Fatalities / Injuries
Twisp River Fire (Okanogan County)	Twisp & Winthrop (pop. 2,600)	1,500	0%	FEMA-5106-FM-WA Approved Aug 19	Mandatory/ Voluntary (2,600)	0/1,200	3/4

August 19, 2015

- Fire impacting the communities of Twisp (pop. 939) and Winthrop (pop. 415)
- Approximately 95% of threatened homes are primary residences
- Threatening high value timberland, cultural resources, camp grounds, wildlife area, power lines, communications and community infrastructure
- 3 fatalities reported – Firefighters involved in a vehicle accident
- 7 shelters are open with 85 occupants (Statewide)

Response:

- WA EOC is Fully Activated
- FEMA Region X remains at Normal Operations; Region X IMAT will deploy to the RRCC later today



FMAG Requests and Declarations



Action (since last report)			Total	FMAG No. and State	
Requests DENIED			0		
Requests APPROVED			1	FEMA-5106-FM-WA Twisp Fire, WA	
Approved FMAG Data					
Year	Current YTD	MTD	Monthly Average	Cumulative Acres Burned YTD	Cumulative Denied FMAGs YTD
2015	25	14	11	150,940	2
Year	Total Previous FY	++ Yearly Average		Total Acres Burned Previous Year	Total Denied FMAGs Previous Year
2014	31	37		152,648	2
* Reflects the 3-year average for current month/ ** Reflects 3-year total average					

Wildfire Summary



Fire Name (County)	FMAG #	Acres burned	% Contained Est. Containment date	Evacuations (Residents)	Structures Threatened	Structures Damaged/ Destroyed	Fatalities / Injuries
Washington (5)							
Chelan (Reach) Complex (Chelan County)	FEMA-5100-FM-WA Approved Aug 14	68,465 (-980)	49% (-1)	Mandatory (800 (-1,950))	500 homes	0/29 (homes)	0/0
Stickpin (Ferry County)	FEMA-5101-FM-WA Approved Aug 15	41,586 (+4,269)	10% (+5)	Mandatory (50)	3,550 (2,400 homes)	0/0	0/0
Stevens County Complex (Stevens County)	FEMA-5103-FM-WA Approved Aug 15	13,308 (+2,872)	33% (+26)	Mandatory (75)	690 homes	0/19 (+1) (homes)	1/0
Okanogan Complex (Okanogan County)	FEMA-5104-FM-WA Approved Aug 14	54,838 (+23,911)	38% (+18)	Mandatory	145 homes (+30)	0/3	0/0
Twisp River Fire (Okanogan County)	FEMA-XXXX-FM-WA Approved Aug 19	1,500	0%	Mandatory/ Voluntary (2,600)	1,200 homes	0/0	3/4

Wildfire Summary



Fire Name (County)	FMA# #	Acres burned	% Contained Est. Containment date	Evacuations (Residents)	Structures Threatened	Structures Damaged/ Destroyed	Fatalities / Injuries
Idaho (1)							
Clearwater Complex (Lewis & Idaho counties)	FEMA-5099-FM-ID Approved Aug 14	39,200 (-32,950)	30% (+5)	Mandatory (400)	1,670 (600 (+40) homes & 20 multi- residences)	0/114 (44 homes)	0/0
Oregon (1)							
Canyon Creek Complex (Grant County)	FEMA-5102-FM-OR Approved Aug 15	48,201 (+4,463)	10% (+10)	Mandatory (50)	500 homes	50 homes/ 36 (+11) homes	0/2

Disaster Requests & Declarations



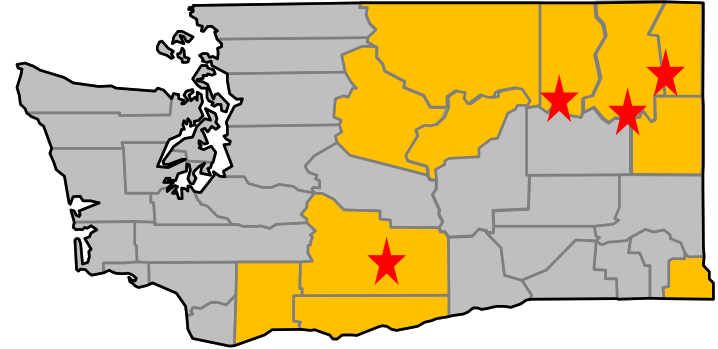
Declaration Requests in Process		Requests APPROVED (since last report)	Requests DENIED (since last report)
1	Date Requested	0	1
AK – DR Wildfires	July 24, 2015		Denied
WA – EM Wildfires	August 19, 2015		

Emergency Declaration Request – WA



August 19, 2015

- Governor requested an Emergency Declaration due to wildfires beginning August 13, 2015 and continuing
- Requesting:
 - Public Assistance (PA) for 11 counties and 4 Tribal Lands
 - Specifically requested Debris Removal and Emergency Protective Measures (Categories A&B) including direct federal assistance



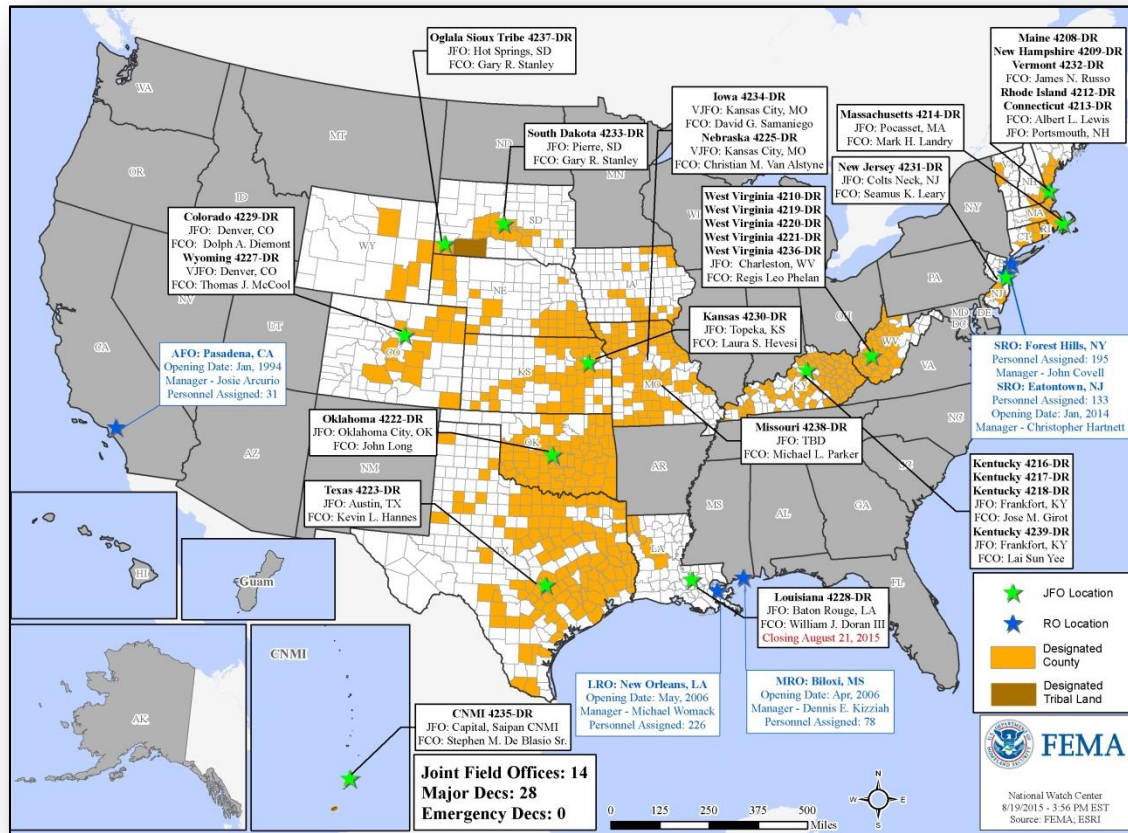
■ Requested PA Counties

★ Requested PA Tribal Lands

Open Field Offices as of August 20



FEMA

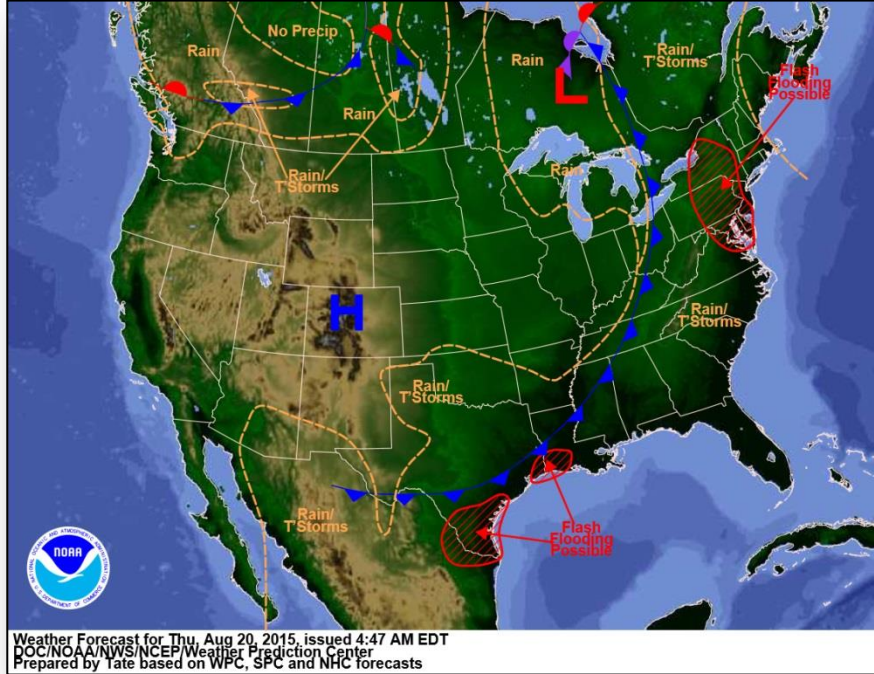


Joint Preliminary Damage Assessments

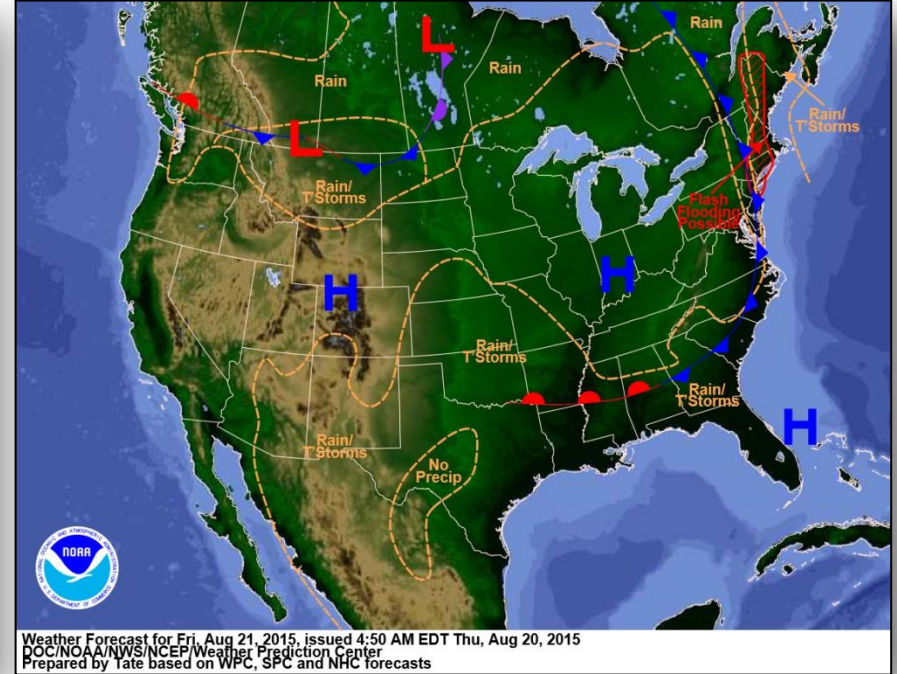


Region	State / Location	Event	I/PA	Number of Counties		Start – End
				Requested	Complete	
IV	FL	Heavy Rain & Flooding July 26, 2015 & continuing	IA	5	5 (+2)	8/12 - 8/19
			PA	4	0	TBD
V	IN	Severe Storms, Tornadoes, Straight-line Winds & Flooding June 7 – July 29, 2015	PA	26	0	8/18 - TBD

National Weather Forecast



Today

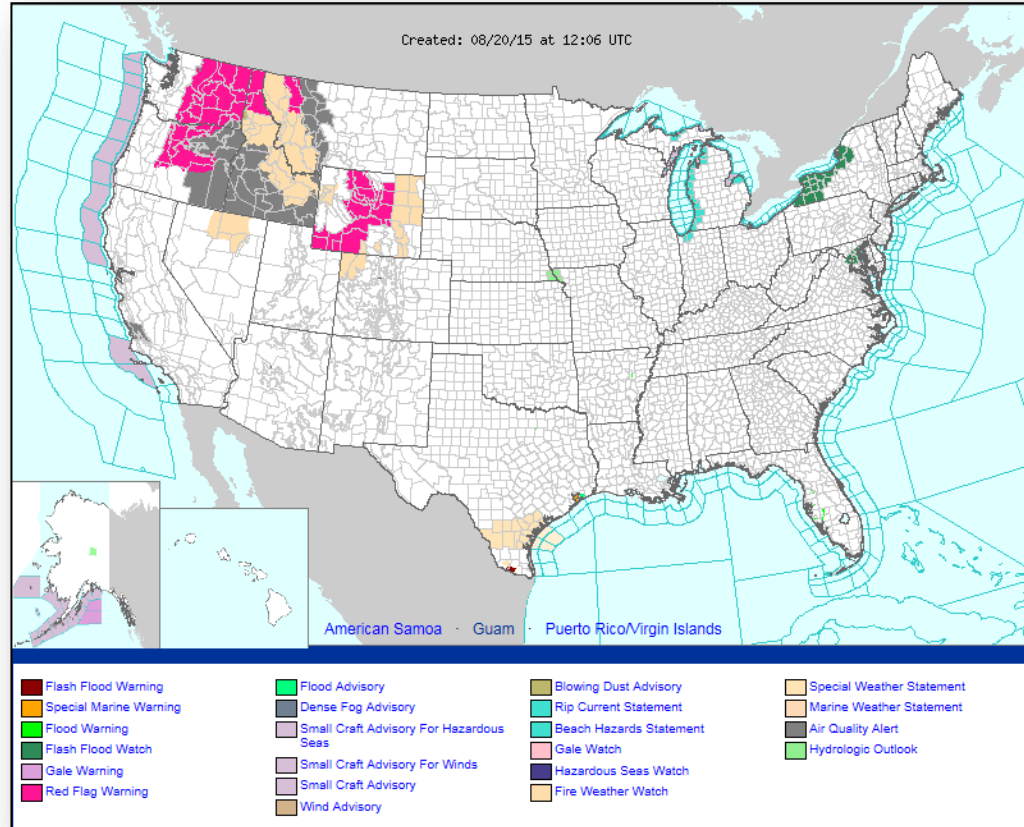


Tomorrow

Active Watches/Warnings



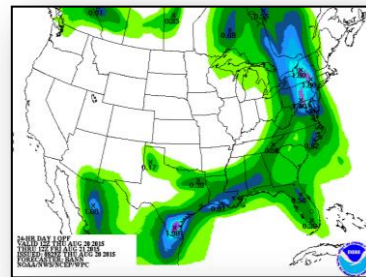
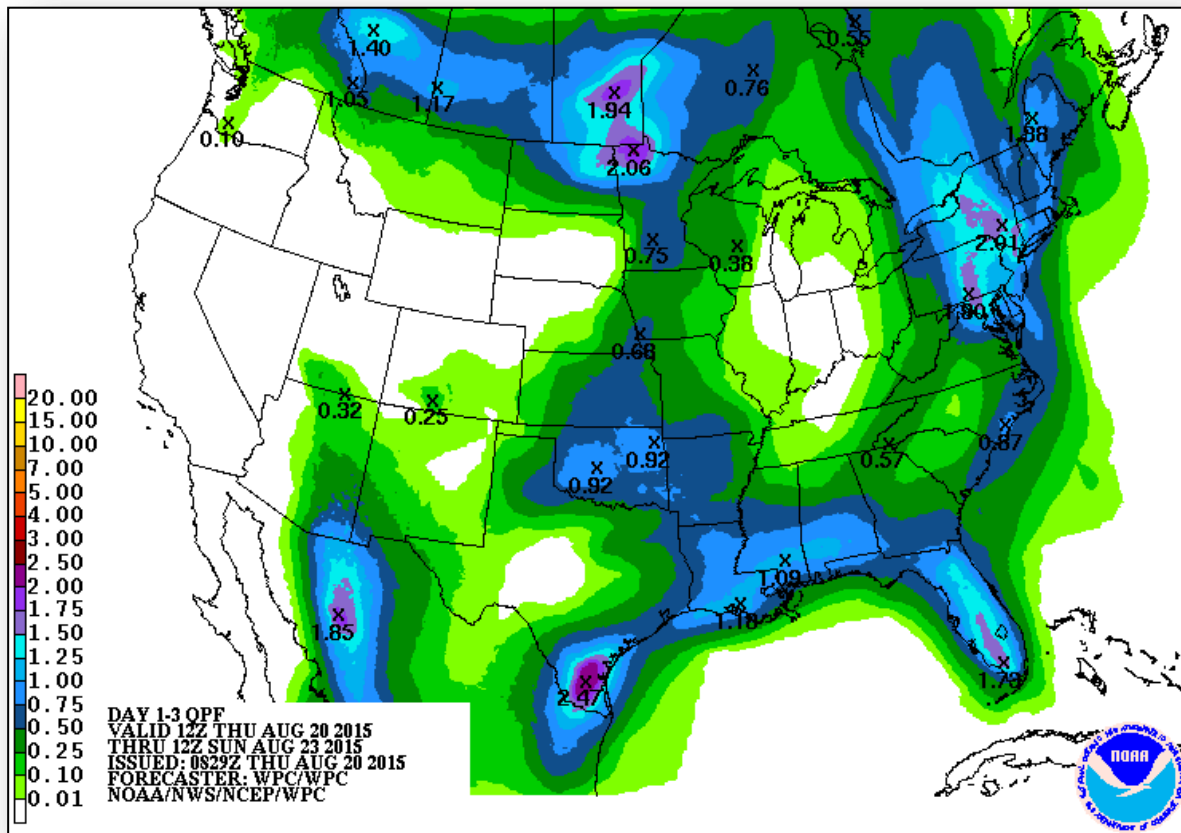
FEMA



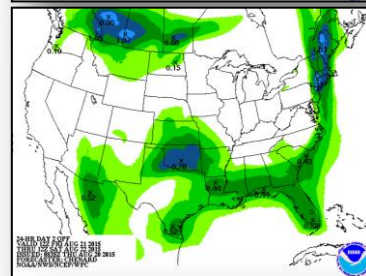
Precipitation Forecast, 1 – 3 Day



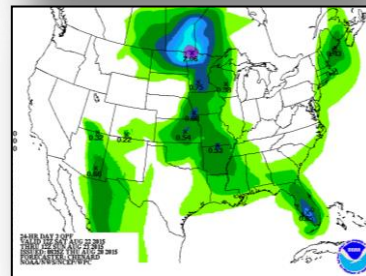
FEMA



Day 1

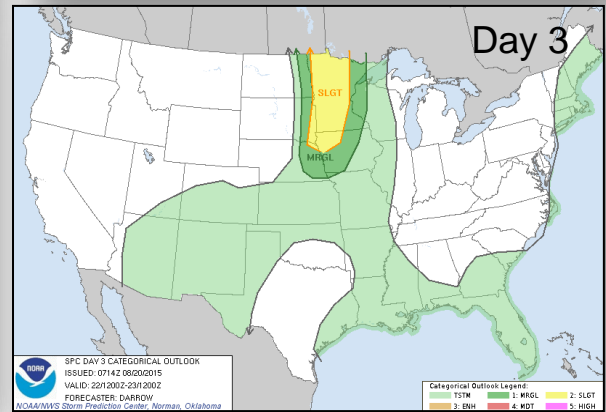
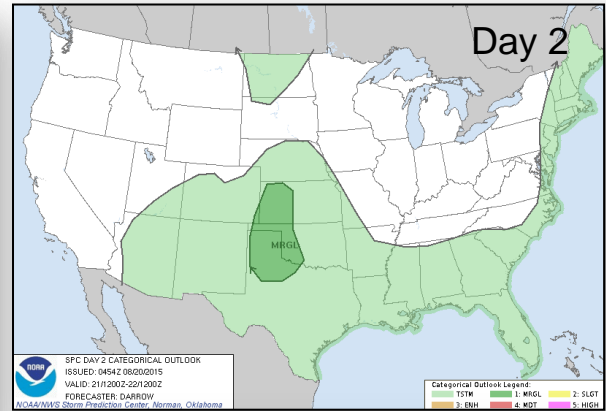
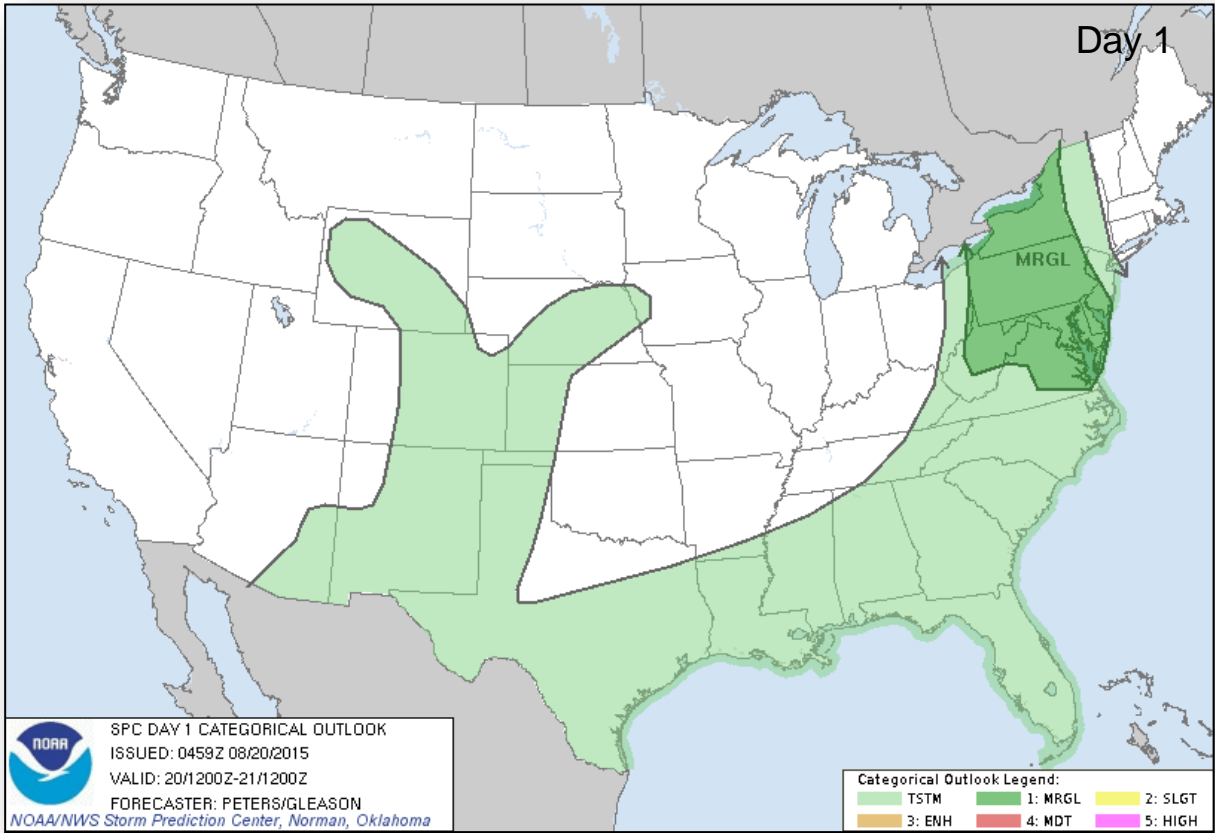


Day 2

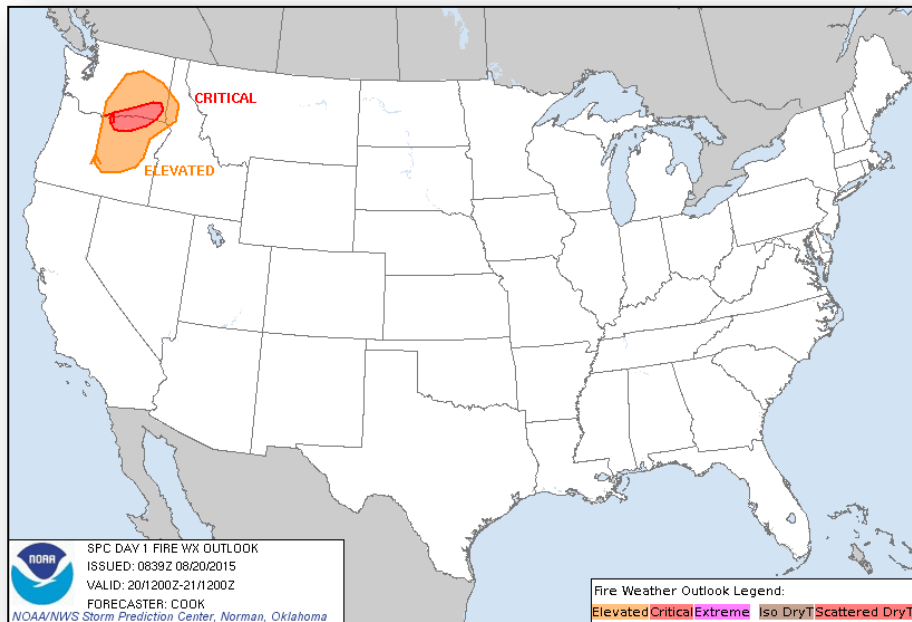


Day 3

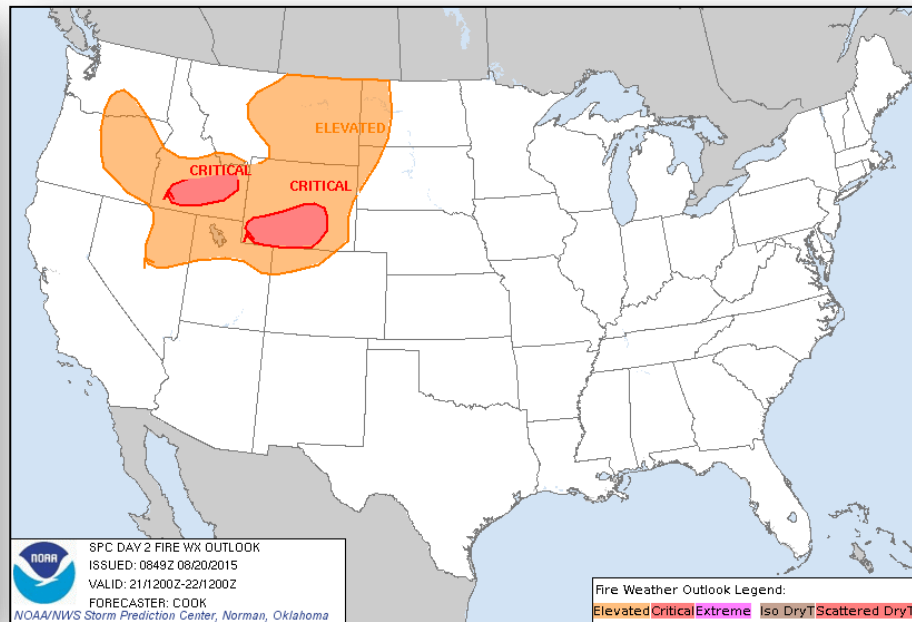
Severe Weather Outlook, Days 1 – 3



Fire Weather Outlook, Days 1 – 2



Today

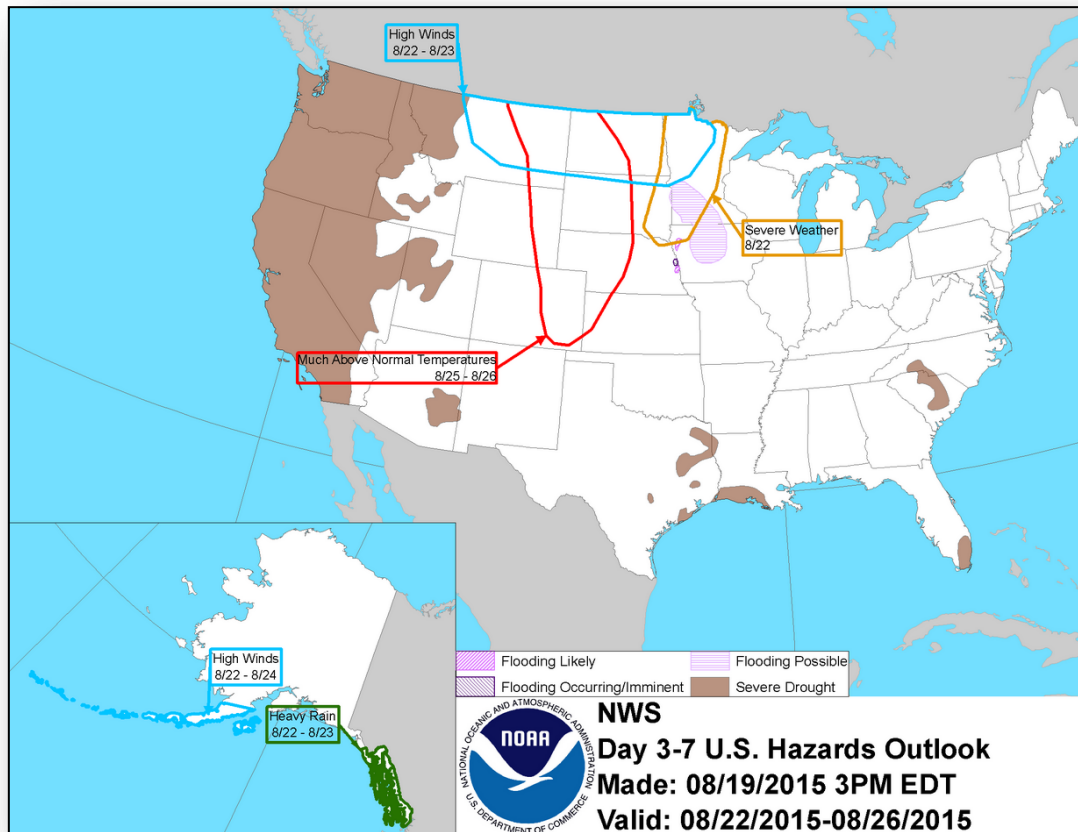


Tomorrow

Hazard Outlook, August 22 – 26

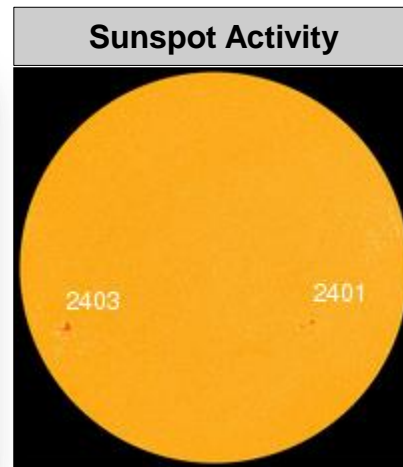
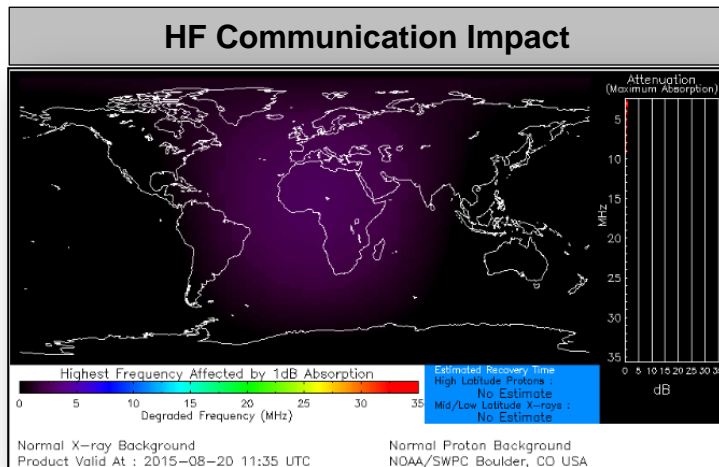


FEMA



Space Weather

	Past 24 Hours	Current	Next 24 Hours
Space Weather Activity:	None	None	None
• Geomagnetic Storms	None	None	None
• Solar Radiation Storms	None	None	None
• Radio Blackouts	None	None	None



FEMA Readiness – Deployable Teams /Assets



Deployable Teams/Assets									
Resource	Status	Total	FMC Available		Partially Available	Not Available	Detailed, Deployed, Activated	Comments	Rating Criterion
FCO		35	11	31%	0	1	23		OFDC Readiness: FCO Green Yellow Red Type 1 3+ 2 1 Type 2 4+ 3 2 Type 3 4 3 2 FDRC 3 2 1
FDRC		9	6	67%	0	0	5		
US&R		28	27	96%	0	1	0	NM-TF1 (Red) – Personnel shortages	<ul style="list-style-type: none"> • Green = Available/FMC • Yellow = Available/PMC • Red = Out-of-Service • Blue = Assigned/Deployed
National IMAT		3	3	100%	0	0	0		<ul style="list-style-type: none"> • Green: 3 avail • Yellow: 1-2 avail • Red: 0 avail (<i>Individual N-IMAT red if 50% of Section Chiefs and/or Team Leader is unavailable for deployment.</i>)
Regional IMAT		13	4	31%	0	0	9	<u>Deployed:</u> RI to NH/MA Aug 6 - TBD (training but FMC) RIV (Team 1) deployed to KY RV to RVI supporting severe weather/flooding RVI (Team 1 & 2) to TX & personnel to OK RVII deployed to MO RVIII (Team 1) deployed to SD & CO RIX (Teams 1 & 2) deployed to CNMI RX IMAT will deploy to RX RRCC	<ul style="list-style-type: none"> • Green: 7 or more avail • Yellow: 4 - 6 teams available • Red: > 8 teams deployed/unavailable <i>R-IMAT also red if TL Ops/Log Chief is unavailable & has no qualified replacement</i>
MCOV		59	46	78%	0	12	1	1 unit in TX	<ul style="list-style-type: none"> • Green = 80 – 100% avail • Yellow = 60 – 79% avail • Red = 59% or below avail • Readiness remains 95%

FEMA Readiness – National/Regional Teams



National/Regional Teams									
Resource	Status	Total	FMC Available		Partially Available	Not Available	Status	Comments	Rating Criterion
NWC		5	5	100%	0	0	Not Activated		• Green = FMC • Yellow = PMC • Red = NMC
NRCC		2	344	89%	0	44	Not Activated		
HLT		1	N/A	N/A	0	0	Activated		
DEST							Not Activated		
RRCCs		10	10	100%	0	0	Not Activated		
RWCs/MOCs		10	10	100%	0	0	Not Activated		



FEMA

FEMA's mission is to support our citizens and first responders to ensure that as a nation we work together to build, sustain, and improve our capability to prepare for, protect against, respond to, recover from, and mitigate all hazards.