



FEMA

Daily Operations Briefing

Monday, July 6, 2015

8:30 a.m. EDT

Significant Activity: July 2 – 6



Significant Events:

- Typhoon Nangka (11W)
- Tropical Storm Chan-Hom (09W) - Final

Tropical Activity:

- Atlantic: Tropical cyclone activity not expected next 48 hours
- Eastern Pacific: Disturbance 1 (Medium 60%)
- Central Pacific: Disturbance 1 (Medium 60%); Disturbance 2 (Low 10%); Disturbance 3 (Low 10%)
- Western Pacific: Tropical Storm Chan-Hom (9W); Typhoon Nangka (11W)

Significant Weather:

- Strong to severe thunderstorms – Southern Rockies and South-central Plains to Upper Great Lakes; portions of the Mid-Atlantic and Southeast
- Rain and thunderstorms – Most of U.S. with exception of portions of the Pacific Northwest, Northern Intermountain, Northern Rockies/Plains, California, Upper Mississippi Valley, Southern Plains and Northeast
- Flash flooding possible – Central/Southern Rockies and Texas panhandle to Middle Mississippi Valley
- Red Flag Warnings: CA, OR and AK
- Isolated Dry Thunderstorms: CA and OR

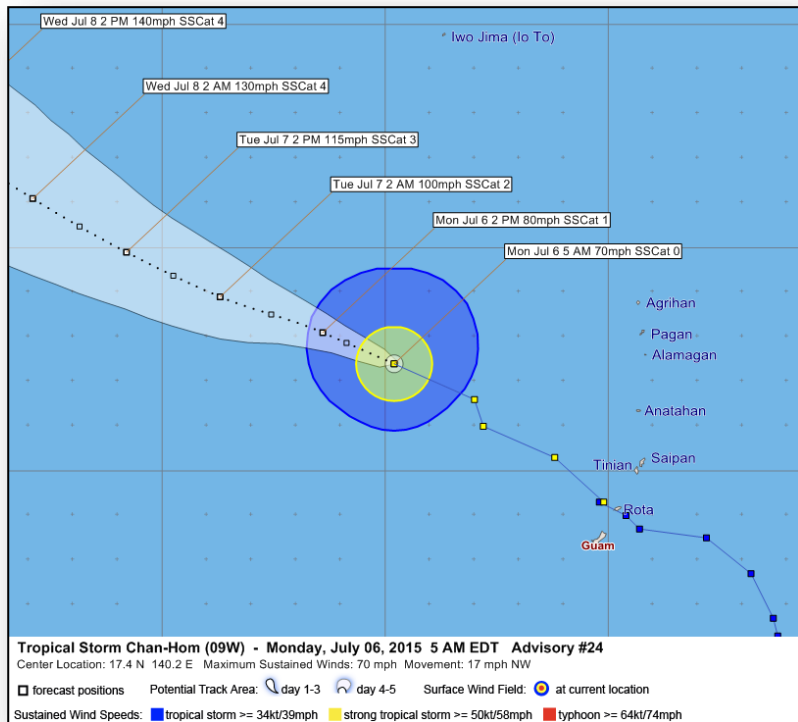
Space Weather:

- Past 24 hours: Minor (R1) radio blackouts occurred; Next 24 hours: no space weather storms predicted

Declaration Activity:

- FEMA-5088-FM-ID for Cape Horn Fire, ID
- Amendment No. 9 for FEMA-4222-DR-OK

Tropical Storm Chan-Hom (09W) – Final



As of 11:00 a.m. EDT

- Moving WNW of Guam at 17 mph
- Forecast to slowly intensify as it moves away from Marianas
- All Tropical Storm Watches/Warnings have been cancelled

Impacts:

- No significant impacts reported at this time
- Airports are closed in Rota & Tinian; Saipan & Guam airports open
- Seaport on Guam open; CNMI seaports pending USCG inspections
- No significant power outage numbers were reported
- No shortfalls reported; no request for FEMA assistance

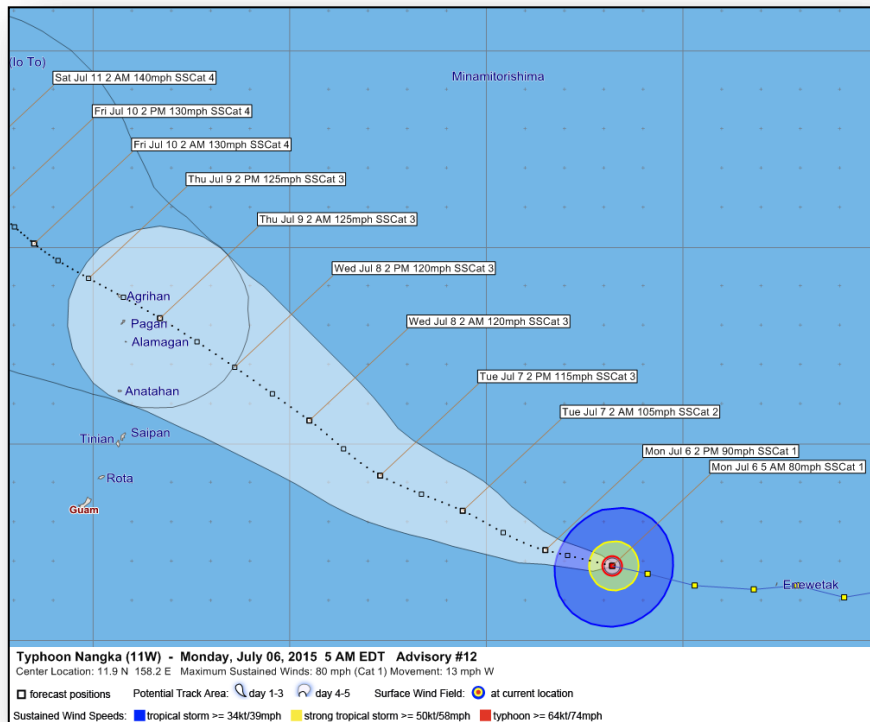
Territory Response

- Guam and CNMI EOCs have returned to Normal Operations
- All shelters are closed

FEMA Region IX/ FEMA Headquarters

- RWC – Watch Steady State / RRCC – Normal Operations
- Regional IMAT along with ESF-3, 8, 12, DCO/DCE; returning to the region
- FEMA LNOs demobilized
- National Watch Center (NWC) returned to Watch Steady State

Western Pacific – Typhoon Nangka (11W)



As of 5:00 a.m. EDT

- Located 917 miles E of Guam
- Moving WNW at 13 mph then turning NW Tuesday afternoon (EDT)
- Forecast track has storm moving north of the populated islands of CNMI
- Maximum sustained winds 80 mph, with higher gusts
- No watches or warnings in effect for U.S. territories

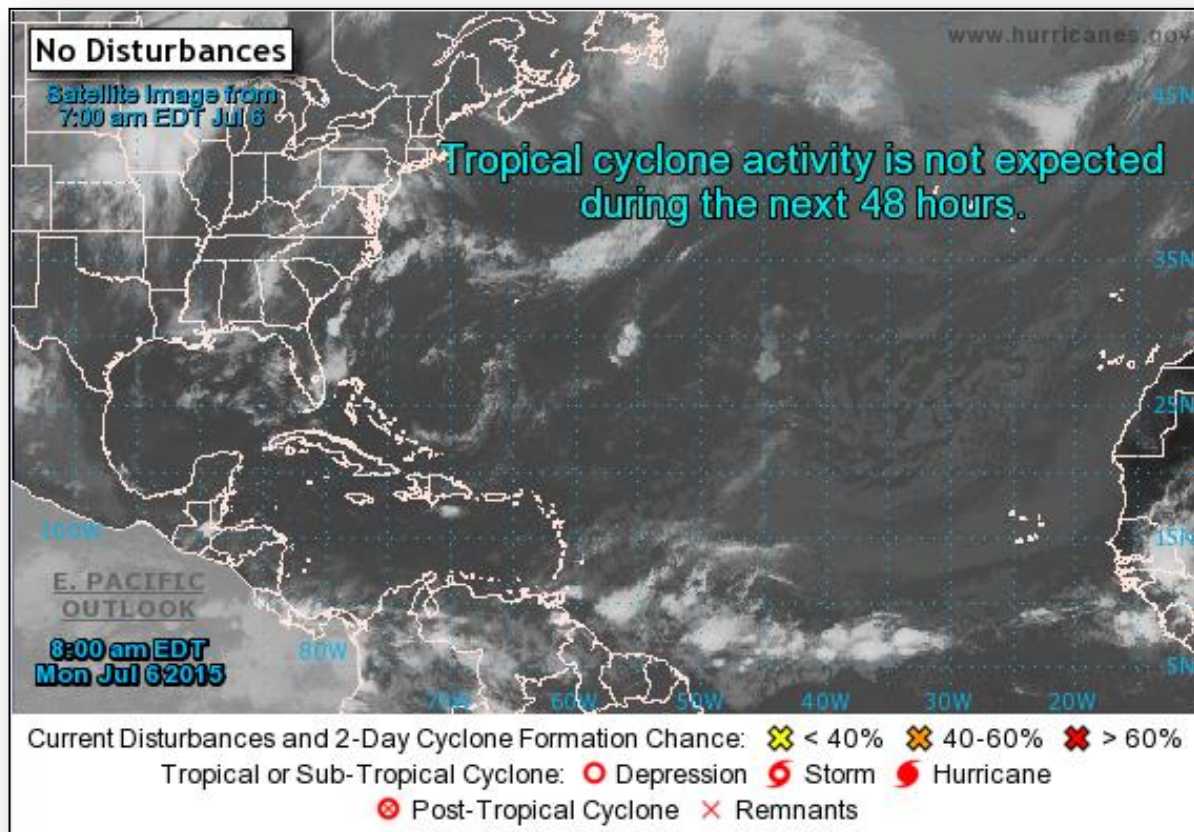
FEMA Region IX/ FEMA Headquarters

- RWC – Watch Steady State / RRCC – Normal Operations
- ISB remains in HI until current threat to CNMI/Guam can be determined
- National Watch Center (NWC) returned to Watch Steady State

2-Day Tropical Outlook – Atlantic



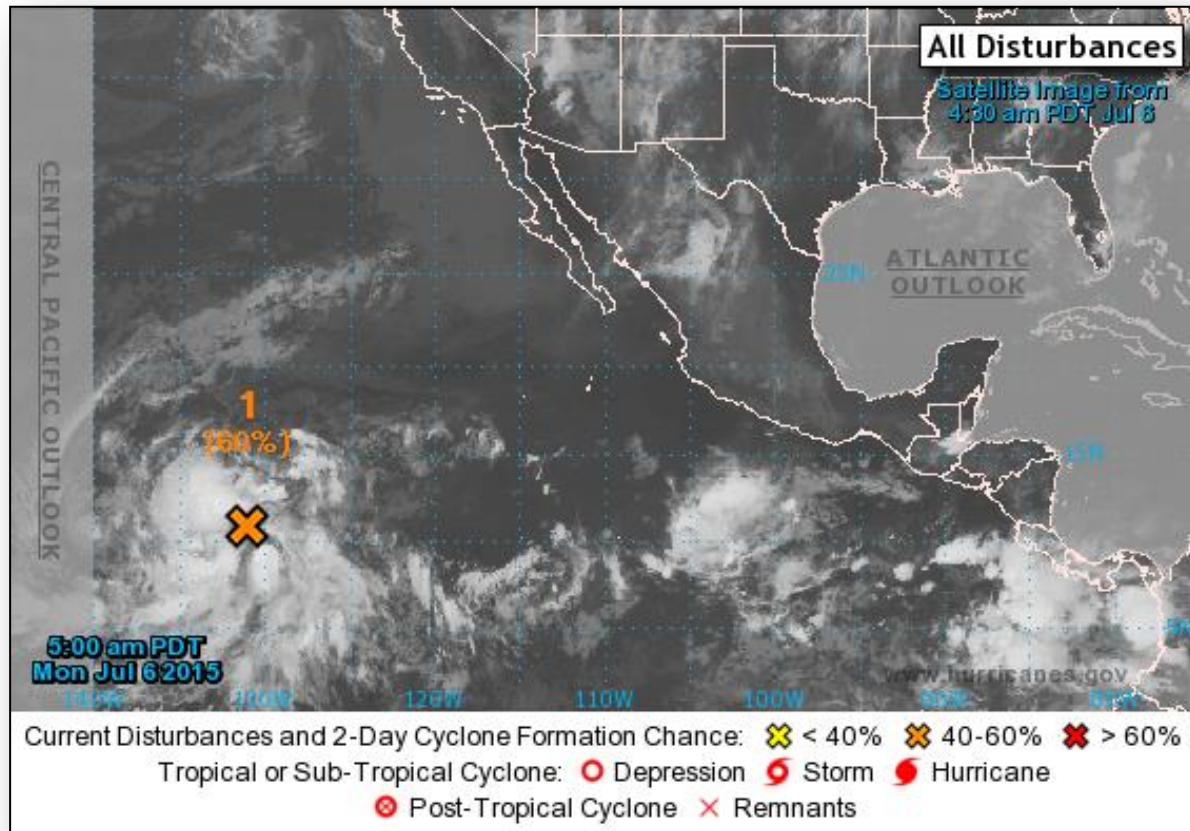
FEMA



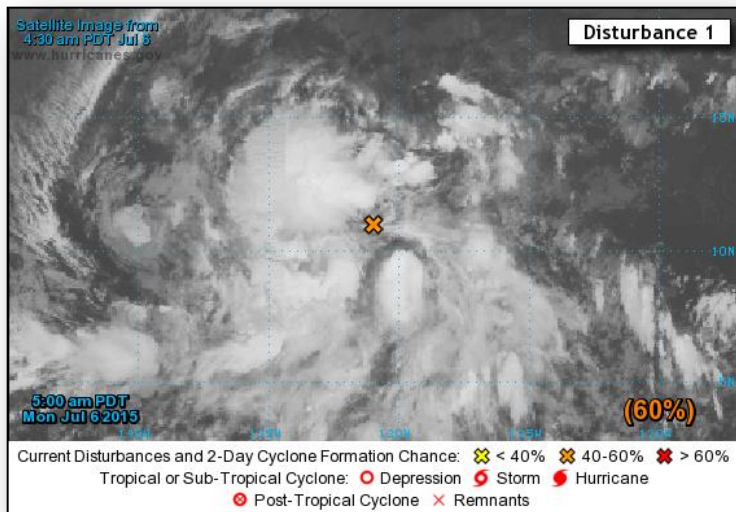
2-Day Tropical Outlook – Eastern Pacific



FEMA



Eastern Pacific – Disturbance 1



Disturbance 1: (as of 8:00 a.m. EDT)

- Large area of low pressure 1,700 miles ESE of the Big Island of Hawaii, moving WNW at 15 mph
- Very little change in the last few hours
- Conditions expected to become more conducive for development
- A tropical depression could form in the next day or two
- Formation chance (48-Hours): Medium – 60%
- Formation chance (5-Days): High – 90%

Central Pacific - Tropical Outlook



Disturbance 1: (as of 8:00 a.m. EDT)

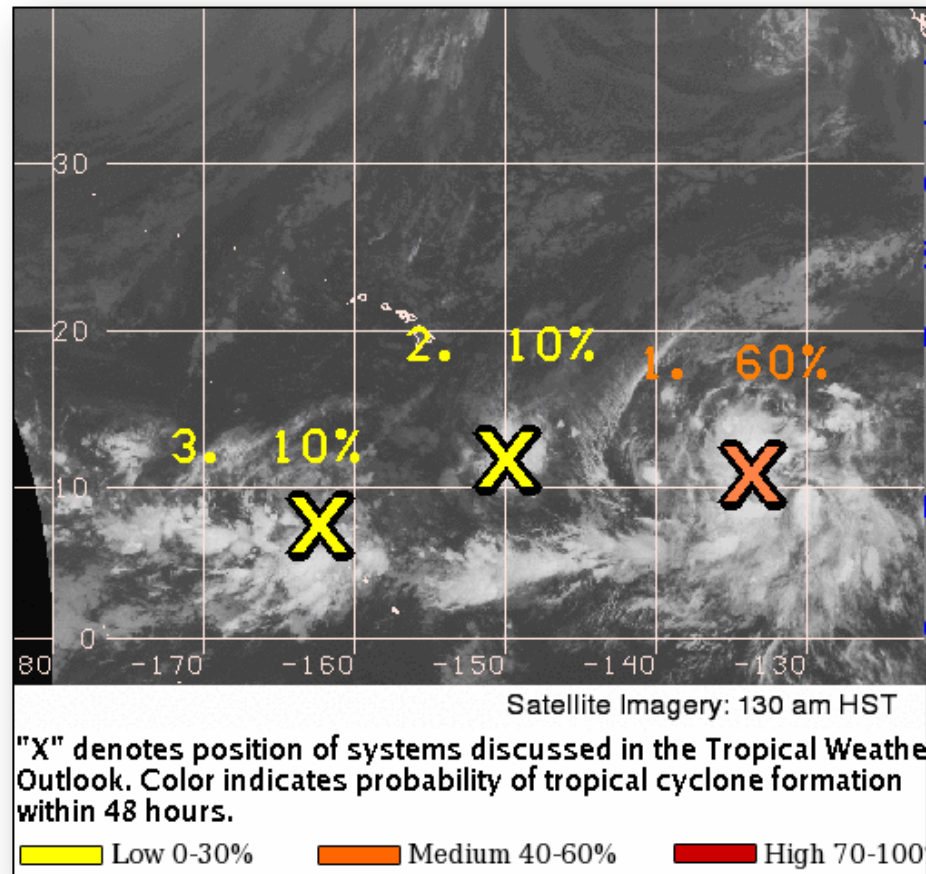
- Large area of low pressure 1,700 miles ESE of Hilo, HI
- Moving WNW at 15 mph
- Thunderstorm activity increasing as conditions become more conducive for development
- A tropical depression could form by Tuesday
- Formation chance (48-Hours): Medium – 60%

Disturbance 2: (as of 8:00 a.m. EDT)

- Area of disturbed weather, associated with a weak surface low about 680 miles SE of Hilo, HI
- System remains disorganized, but environmental conditions may become more favorable for gradual development as it remains nearly stationary
- Formation chance (48 hours): Low - 10%

Disturbance 3: (as of 8:00 a.m. EDT)

- Thunderstorms around a weak, nearly stationary low pressure area 1,000 miles SW of Honolulu, HI
- Conditions are not expected to be conducive for development through Tuesday night
- Formation chance (48 hours): Low – 10%



Cape Horn Fire – Idaho



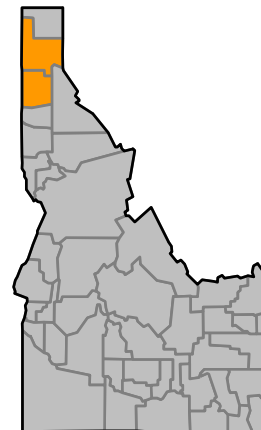
Fire Name	Location	Acres burned	% Contained	Est. Full Containment	FMAG	Structures Lost / Threatened	Fatalities / Injuries
Cape Horn	Kootenai & Bonner counties	1,200	0%	N/A	Approved July 6	6 homes/281 Homes	0 / 0

Situation

- FMAG 5088-FM-ID approved July 6, 2015
- Fire began Sunday, July 5 near Bayview (pop. 400), east of the Cape Horn area
- Fire is burning on State & Federal land; moving towards Bayview
- Mandatory evacuation for 300 people (Broadview development in Wenatchee & Sunrise Circle)
- Type-II Management Team arriving later today
- FMAG requested & approved on July 6

Response

- ID EOC is at Normal Operations
- FEMA Region X at Watch/Steady State



 Kootenai County

Disaster Requests & Declarations



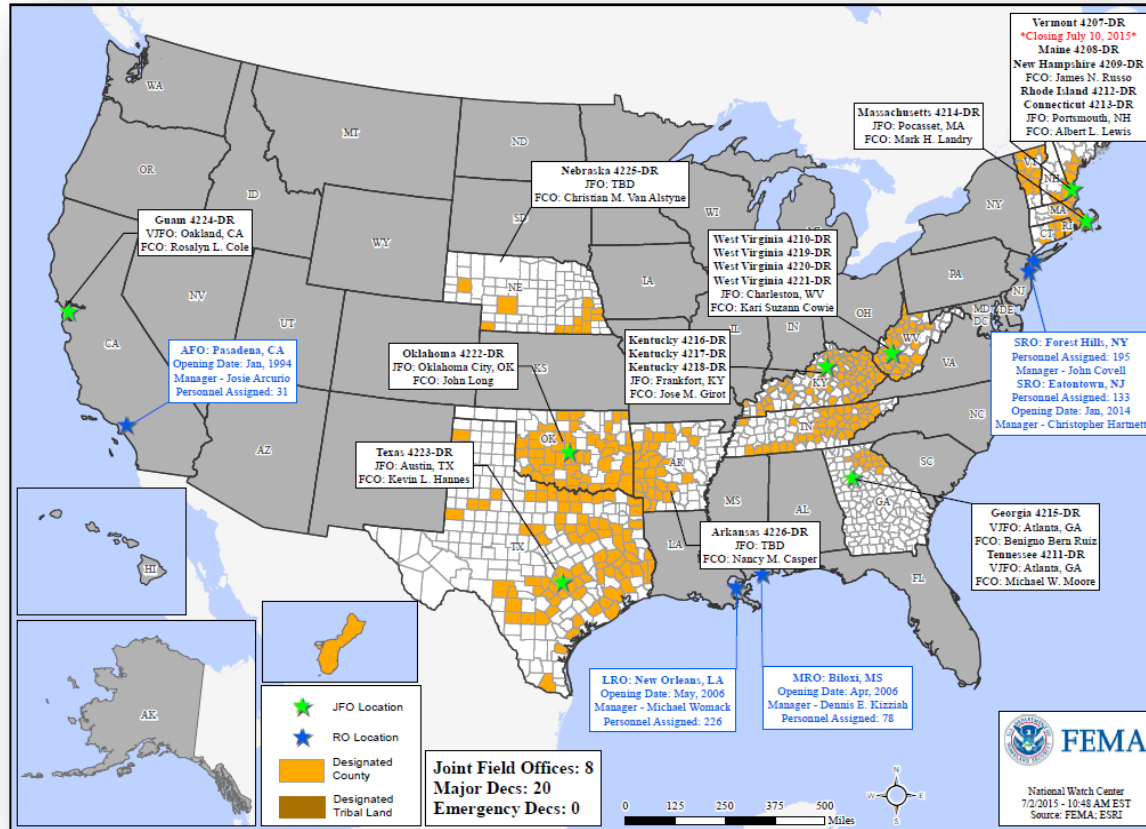
Declaration Requests in Process		Requests APPROVED (since last report)	Requests DENIED (since last report)
3	Date Requested	0	0
IA – DR Avian Influenza Outbreak	June 17, 2015		
WY – DR Severe Storms and Flooding	June 19, 2015		
KS – DR Severe Storms, Tornadoes, and Flooding	July 1, 2015		

Disaster Amendments



Amendment	Effective Date	Action
Amendment No. 9 FEMA-4222-DR-OK	July 2, 2015	Added 9 counties for Individual Assistance

Open Field Offices as of July 6

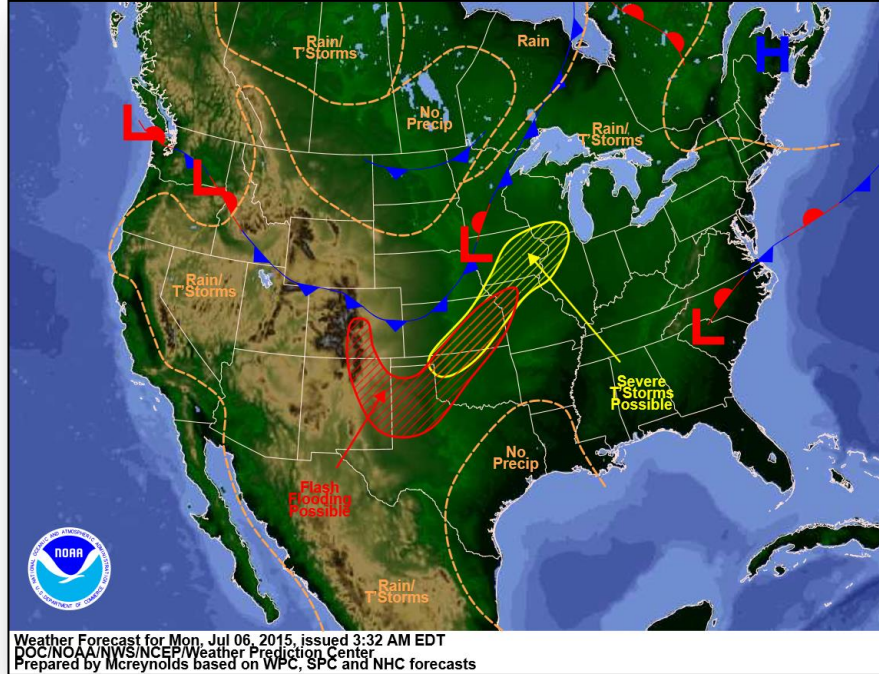


Joint Preliminary Damage Assessments

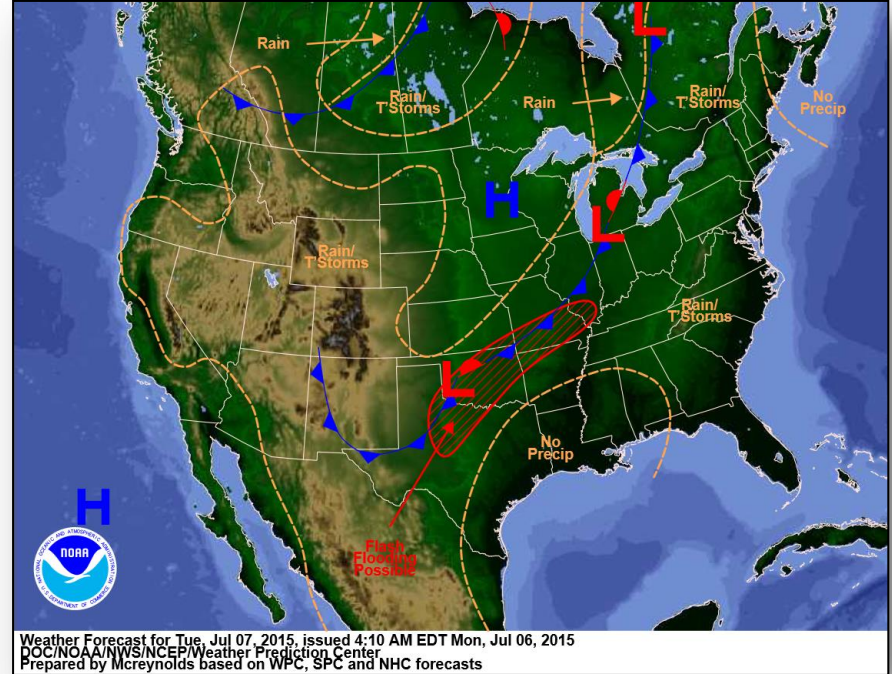


Region	State / Location	Event	IA/PA	Number of Counties		Start – End
				Requested	Complete	
I	VT	Flooding June 9, 2015	PA	3	0	6/26 – TBD
VI	LA	Red River Flooding May 18, 2015 and continuing	IA	2	2	6/24 – 6/26
			PA	6	5	6/24 – TBD
	TX	Severe Storms, Tornadoes & Flooding May 5, 2015 and continuing	IA	44 (+3)	39 (+1)	5/29 – TBD
			PA	92	73 (+7)	5/29 – TBD
	OK	Severe Storms Tornadoes, Straight-Line Winds and Flooding	IA	35	35	5/26 – 6/26
			PA	63 (+2)	61 (+2)	6/26 – TBD
VII	IA	Severe Storms June 22, 2015 and continuing	PA	17 (+17)	0	TBD -TBD
	MO	Severe Storms, Straight-line Winds & Flooding May 15, 2015 and continuing	PA	44 (+23)	4 (+4)	6/29 – TBD
X	AK	Sockeye Fire June 15, 2015 and continuing	IA	1	1	6/25 – 6/26
			PA	1	1 (+1)	6/30 – 7/2
		Card Street Fire June 15, 2015 and continuing	IA	1	1 (+1)	6/30 – 7/2
			PA	1	0	7/6 – TBD

National Weather Forecast



Today

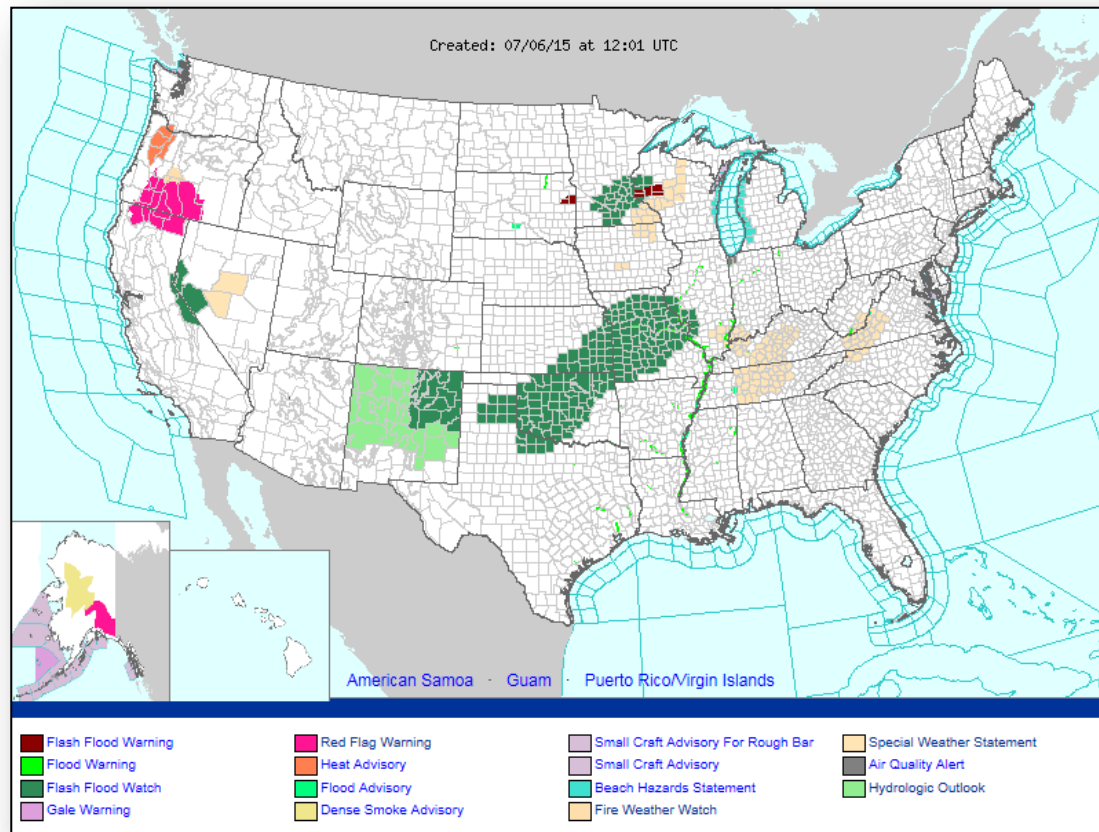


Tomorrow

Active Watches/Warnings



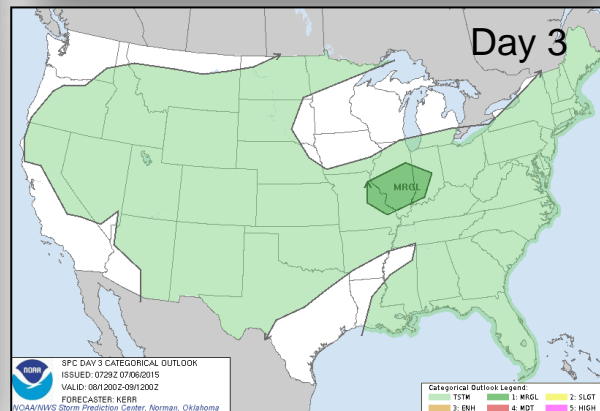
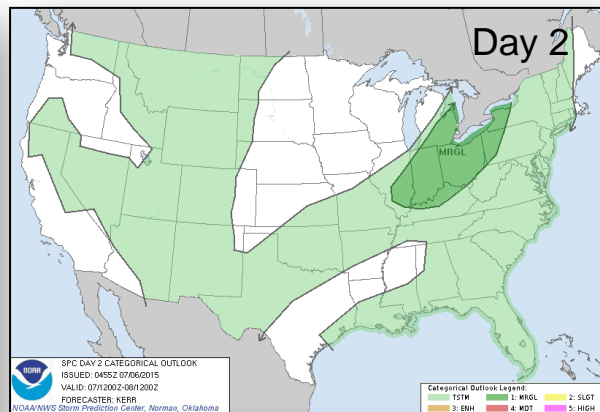
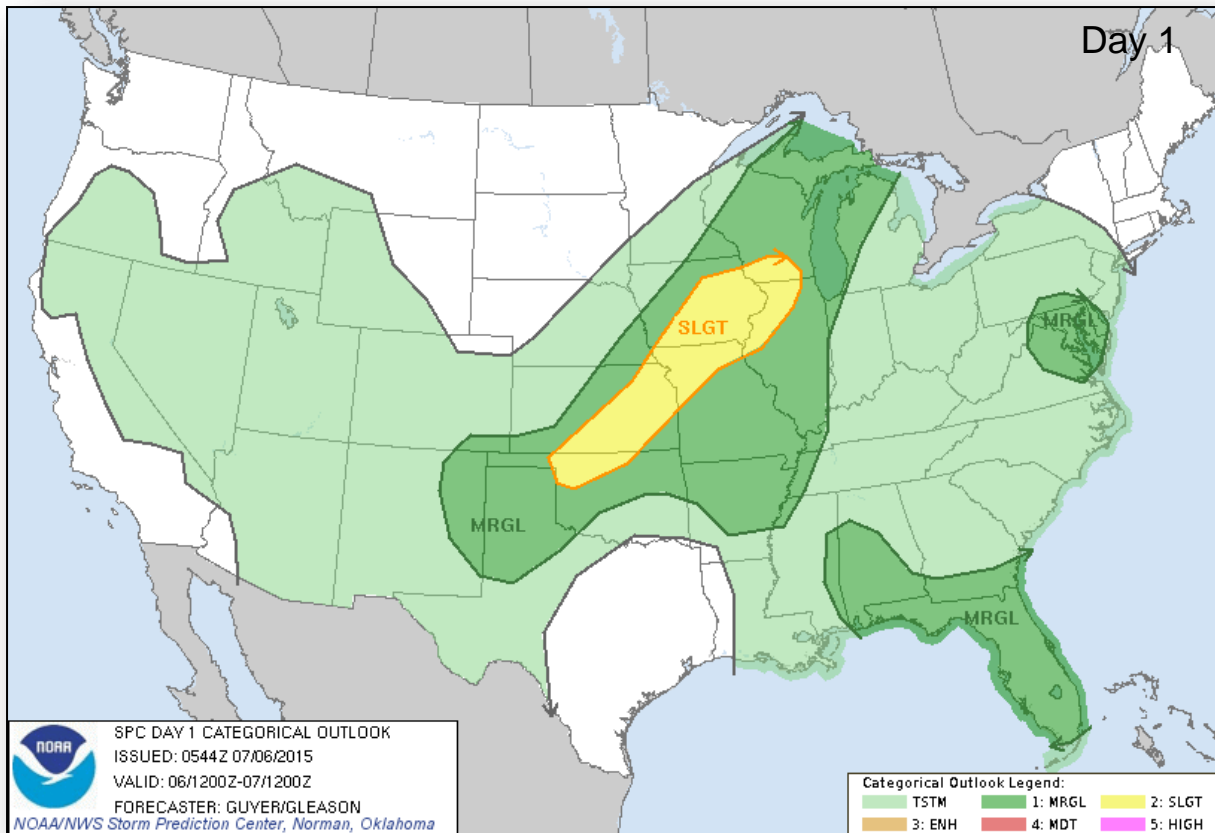
FEMA



Severe Weather Outlook, Days 1-3



FEMA



Categories

Thunderstorms

Marginal Risk

Slight Risk

Enhanced Risk

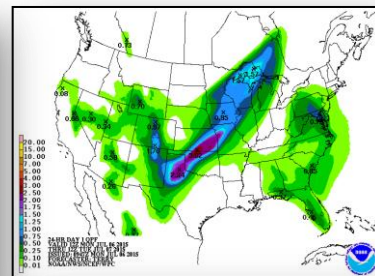
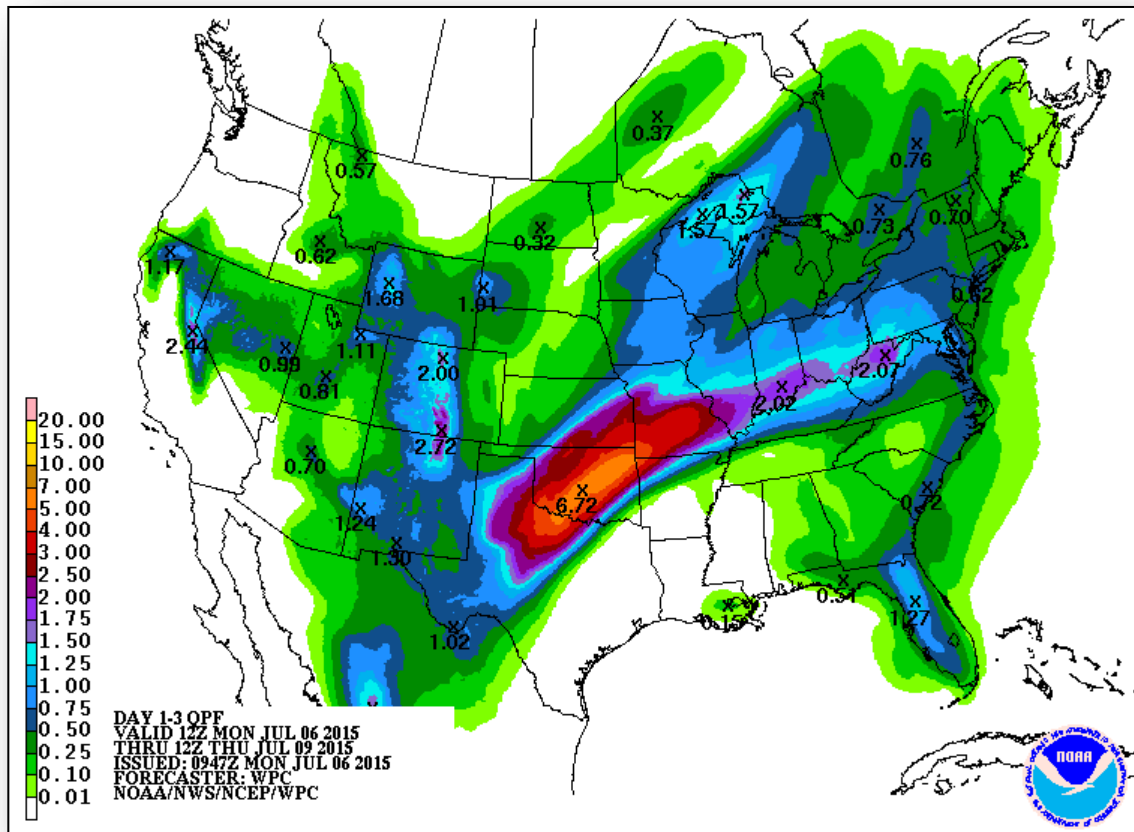
Moderate Risk

High Risk

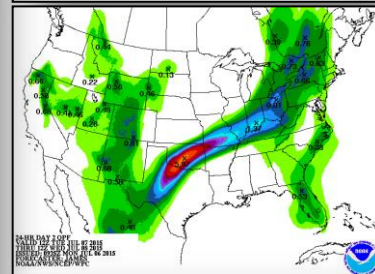
Precipitation Forecast, 1-3 Day



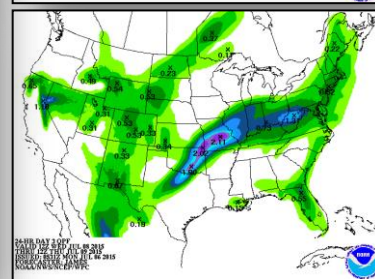
FEMA



Day 1



Day 2

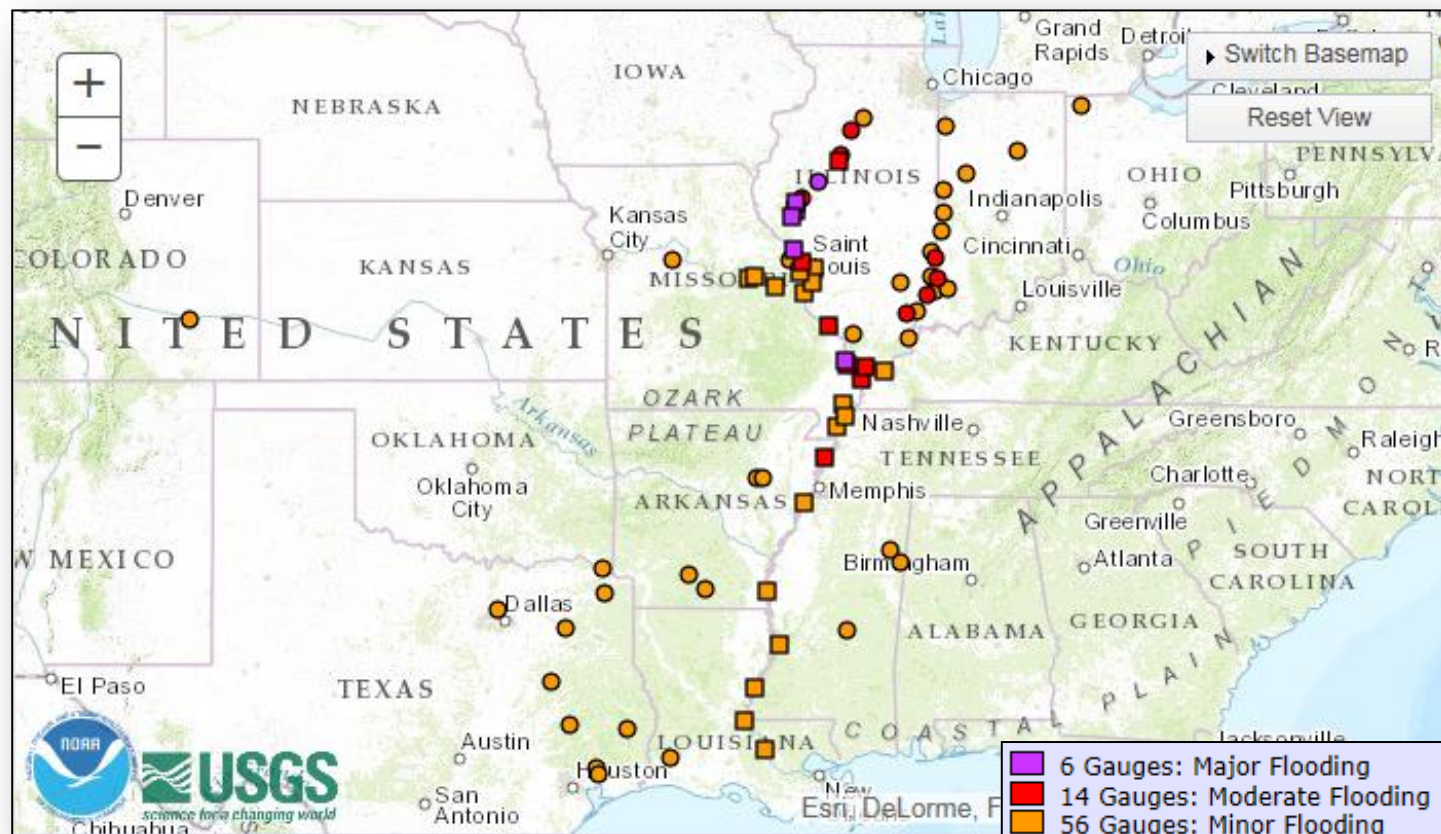


Day 3

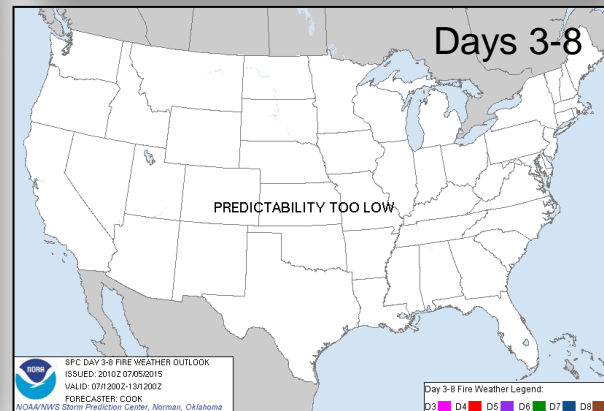
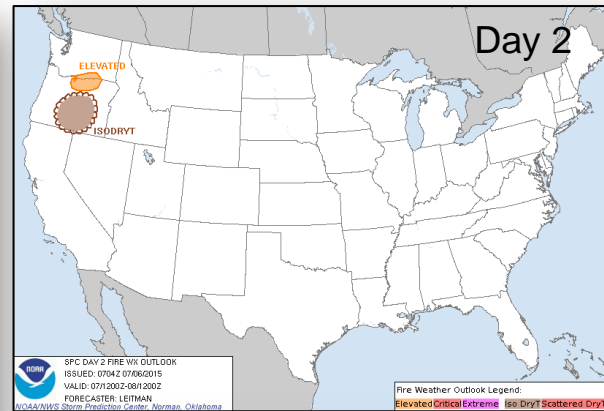
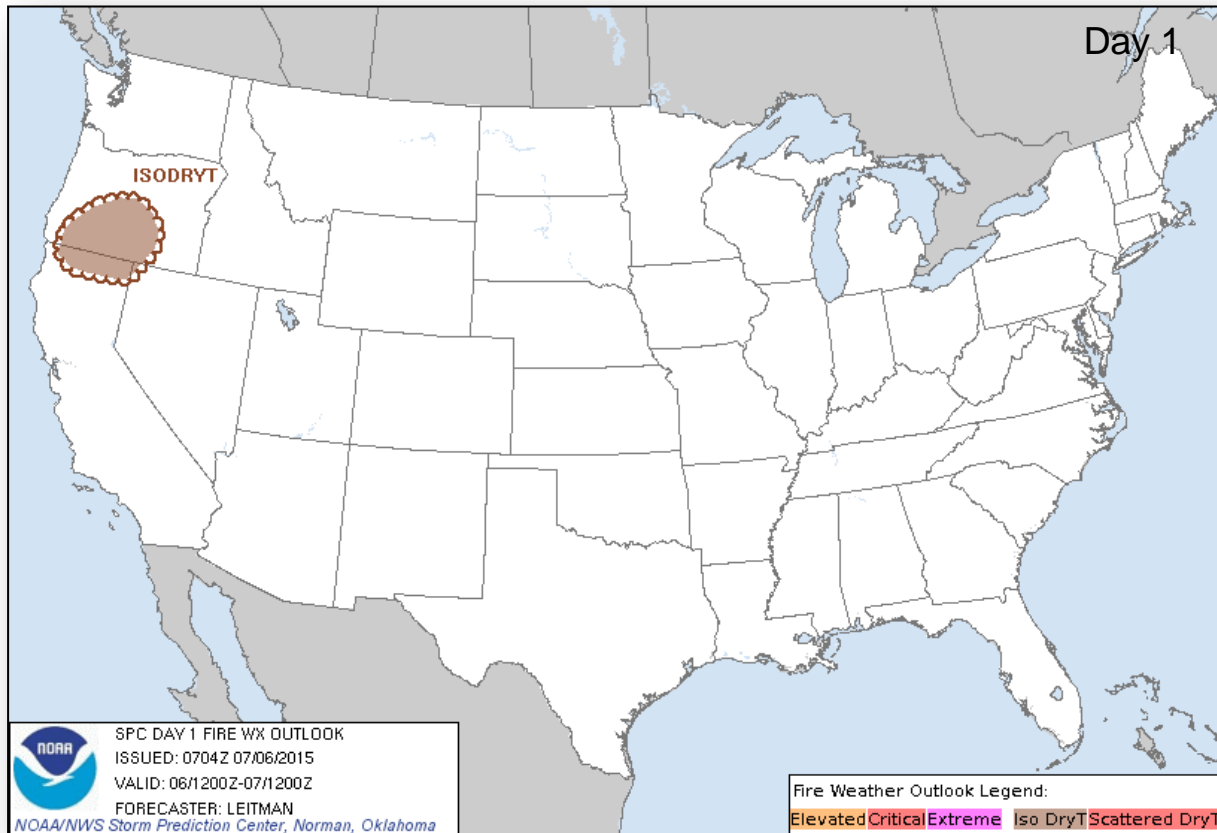
River Forecast



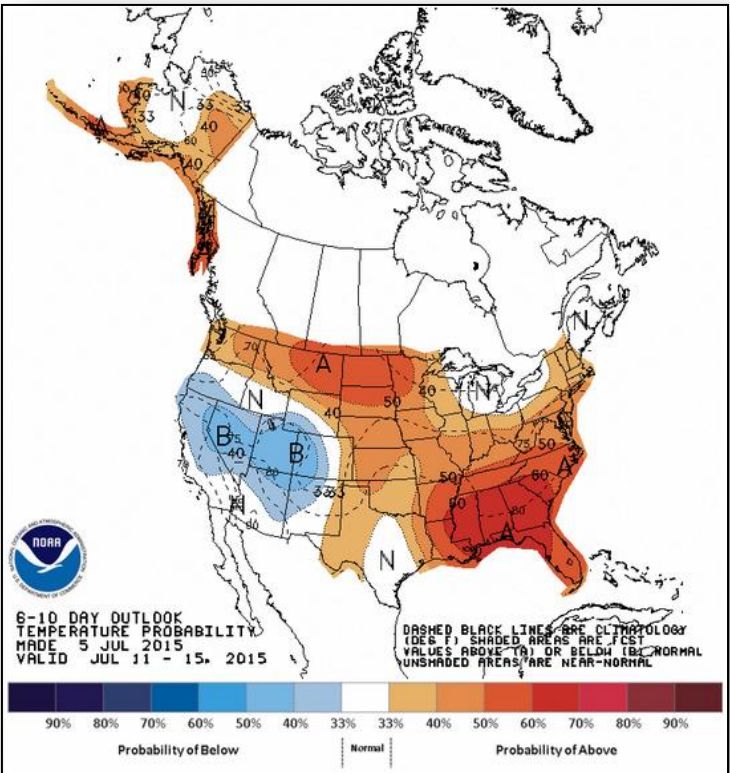
FEMA



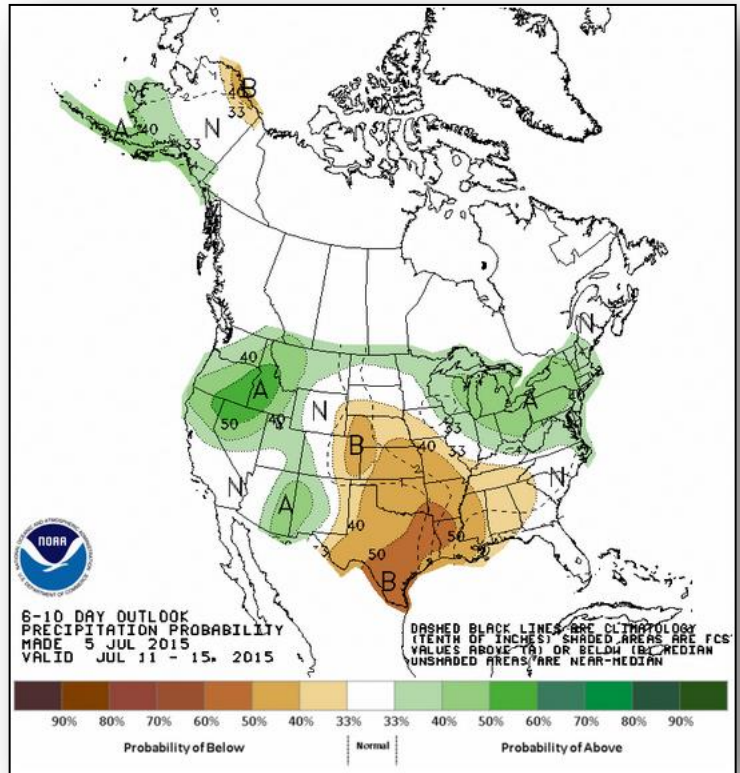
Fire Weather Outlook, Days 1-8



6-10 Day Outlooks



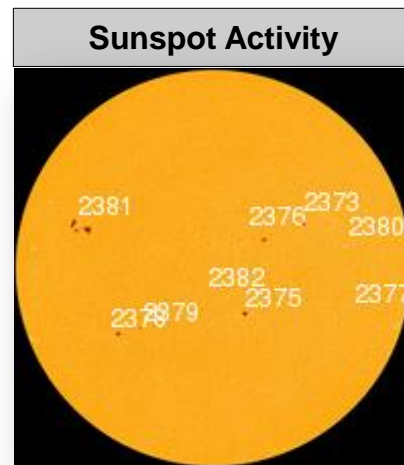
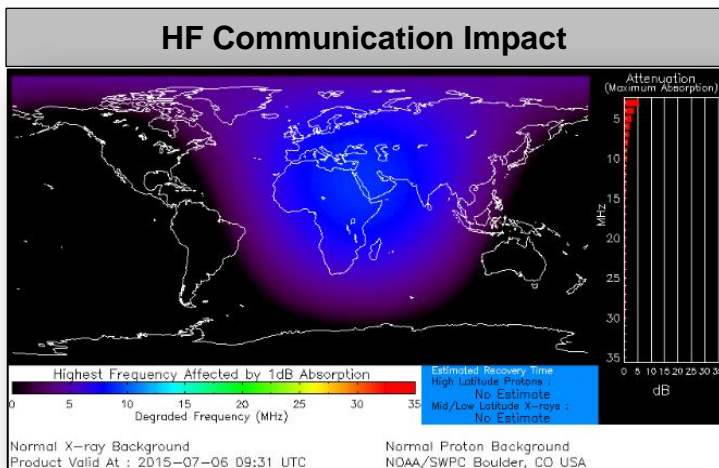
Temperature Probability



Precipitation Probability

Space Weather

None	Past 24 Hours	Current	Next 24 Hours
Space Weather Activity:	Minor	None	None
• Geomagnetic Storms	None	None	None
• Solar Radiation Storms	None	None	None
• Radio Blackouts	R1	None	None



FEMA Readiness – Deployable Teams /Assets



Deployable Teams/Assets									
Resource	Status	Total	FMC Available		Partially Available	Not Available	Detailed, Deployed, Activated	Comments	Rating Criterion
FCO		35	11	31%	0	1	23		OFDC Readiness: FCO Green Yellow Red Type 1 3+ 2 1 Type 2 4+ 3 2 Type 3 4 3 2 FDRRC 3 2 1
FDRRC		9	7	78%	0	0	2		
US&R		28	27	96%	0	1	0	NM-TF1 (Red) – Personnel shortages	<ul style="list-style-type: none"> • Green = Available/FMC • Yellow = Available/PMC • Red = Out-of-Service • Blue = Assigned/Deployed
National IMAT		3	2	67%	0	0	1	Elements of IMAT East-2 deployed to TX	<ul style="list-style-type: none"> • Green: 3 avail • Yellow: 1-2 avail • Red: 0 avail (<i>Individual N-IMAT red if 50% of Section Chiefs and/or Team Leader is unavailable for deployment.</i>)
Regional IMAT		13	4	31%	1	4	4	Deployed (Blue): RII (Team A) to TX supporting FEMA-4223-DR-TX RV to RVI supporting severe weather/flooding RVI (Team 1) to TX & personnel to OK RIX (Team 2) demobilizing from Guam Partially Available (Yellow): RX IMAT returned from Alaska Not Mission Capable (Red): <u>Personnel shortages/staff adjustments</u> R1 (Team 1); RIV (Team 3); RVI (Team 2); RIX (Team 1)	<ul style="list-style-type: none"> • Green: 7 or more avail • Yellow: 4 - 6 teams available • Red: > 8 teams deployed/unavailable <i>R-IMAT also red if TL Ops/Log Chief is unavailable & has no qualified replacement</i>
MCOV		60	34	57%	0	6	20	16 units in TX 4 units in OK	<ul style="list-style-type: none"> • Green = 80 – 100% avail • Yellow = 60 – 79% avail • Red = 59% or below avail • Readiness remains 95%

FEMA Readiness – National/Regional Teams



National/Regional Teams									
Resource	Status	Total	FMC Available		Partially Available	Not Available	Status	Comments	Rating Criterion
NWC		5	5	100%	0	0	Not Activated	Returned to Watch Steady State	• Green = FMC • Yellow = PMC • Red = NMC
NRCC		2	344	89%	0	44	Not Activated		
HLT		1	N/A	N/A	0	0	Activated		
DEST							Not Activated		
RRCCs		10	10	100%	0	0	Not Activated	Region IX Deactivated	
RWCs/MOCs		10	10	100%	0	0	Not Activated	Region IX RWC returned to Watch Steady State	



FEMA

FEMA's mission is to support our citizens and first responders to ensure that as a nation we work together to build, sustain, and improve our capability to prepare for, protect against, respond to, recover from, and mitigate all hazards.