



FEMA

Daily Operations Briefing

Saturday, November 1, 2014

8:30 a.m. EDT

Significant Activity: Oct 31 - Nov 1



Significant Events:

- Hawaii - Kilauea lava flow

Tropical Activity:

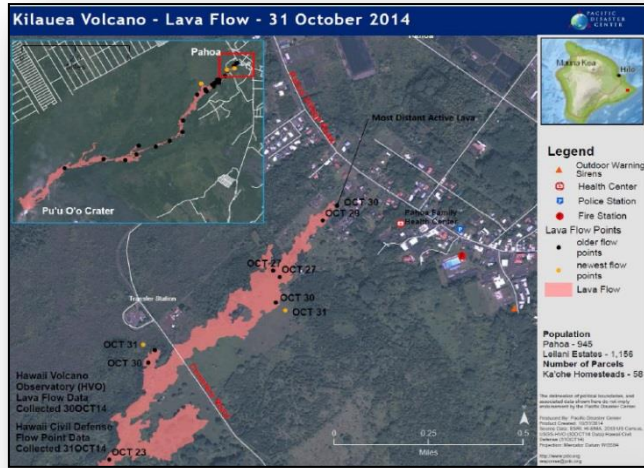
- Atlantic – No tropical cyclone activity expected next 48 hours
- Eastern Pacific – Tropical Storm Vance; Disturbance 1 (Low, 10%)
- Central Pacific – No tropical cyclones expected through late Sunday night
- Western Pacific – No tropical activity impacting U.S. territories

Significant Weather:

- Heavy snow – Sierra Nevada, Northern Rockies, Southern Appalachians & New England
- Elevated/Critical Fire Weather Areas: FL; Red Flag Warnings: FL
- Space Weather: Past 24 hours – none observed; next 24 hours – none predicted

Declaration Activity: Major Disaster Declaration approved - Missouri

Hawaii - Kilauea Lava Flow



Situation (Volcano Alert Level: WARNING; Aviation Code: ORANGE) :

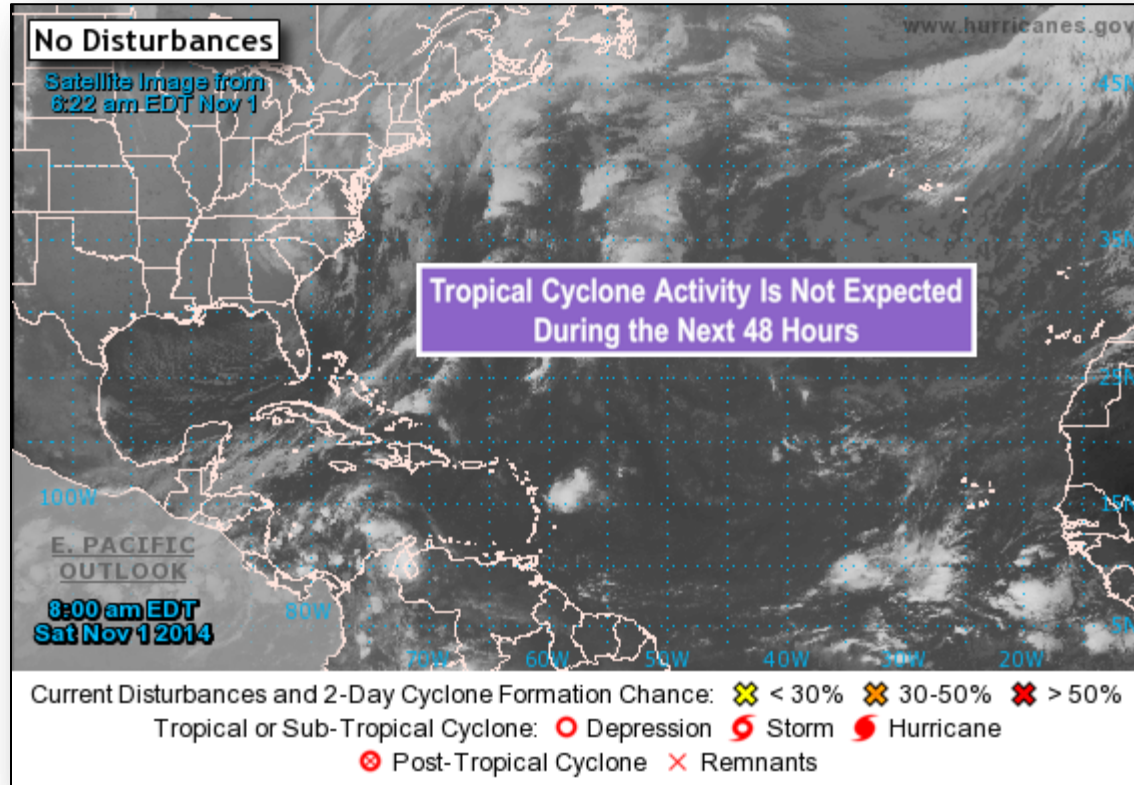
- Kilauea lava flow began erupting June 27; advancing towards Puna District on Big Island of Hawaii
- ▲ Leading edge of flow now stalled 150 yards from Pahoa Village Road
- ▲ Flow's forward progress decreasing due to multiple new breakouts upslope, taking lava away from main flow front
- ▲ Currently 60 yards wide; showing signs of widening with breakouts along flanks
- ▲ 6-12 homes in projected flow path; evacuation advisory for downslope residents continues; no evacuations in effect
- ▲ Threatened: 50 homes/businesses and HELCO power distribution system
- ▲ Power distribution poles and TELCOM poles shielded with berms, reflective sheathing, water and foam; 2 large diesel generators in place
- ▲ Area schools closed from Oct 30 – Nov 7; redistributing students to other schools
- Destroyed: 1 outbuilding
- 1 shelter open with no occupants

Response:

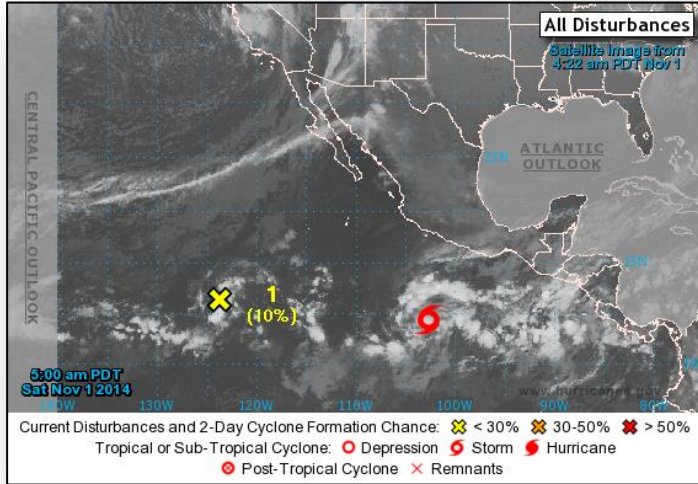
- Hawaii County EOC: Partial Activation (24/7); mobile command post established
- HI State EOC: not activated; no life safety issues and no shortfalls identified
- Governor requested a Major Disaster Declaration on October 24
- 80 National Guardsmen deployed for security



2 Day Tropical Outlook – Atlantic



Disturbance 1 – Eastern Pacific



Disturbance 1 (as of 8:00 a.m. EDT)

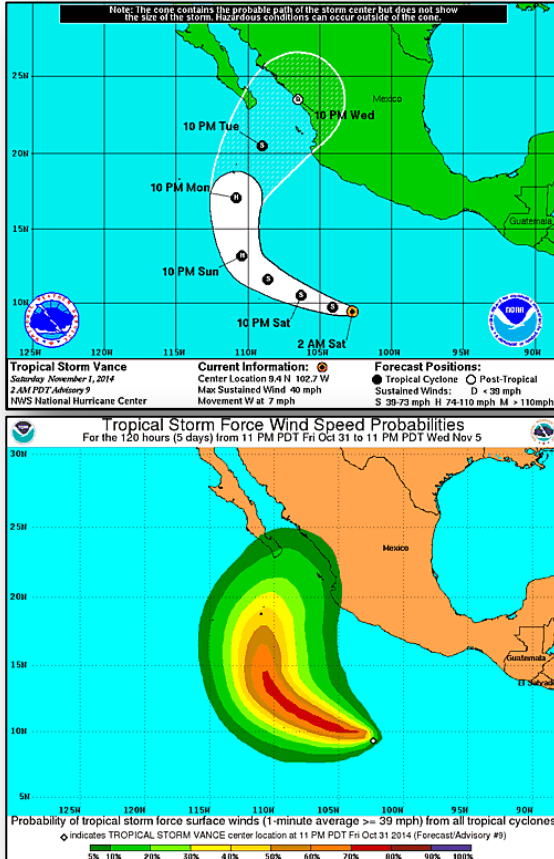
- Located 1,200 miles SW of southern tip of Baja California peninsula, Mexico
- Moving W or WSW at 5-10 mph next few days
- Significant development not expected
- Formation chance:
 - Next 48 hours – Low, 10%
 - Next 5 days – Low, 10%

Tropical Storm Vance – Eastern Pacific

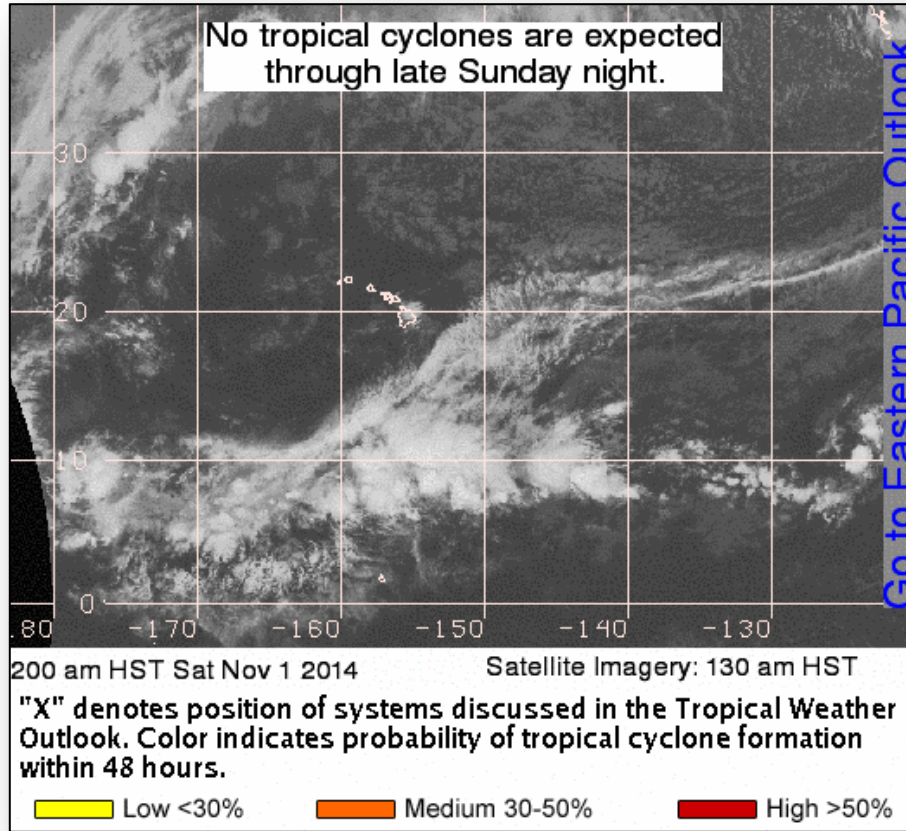


Tropical Storm Vance (as of 5:00 a.m. EDT)

- Located 550 miles SSW of Acapulco, Mexico
- Moving W at 7 mph
- Turn WNW at faster forward speed expected later today followed by turn NW by Sun night
- Maximum sustained winds 40 mph
- Strengthening forecast next 48 hours; could become hurricane by Sun night
- Tropical storm force winds extend 45 miles
- No coastal watches or warnings in effect



2 Day Tropical Outlook – Central Pacific

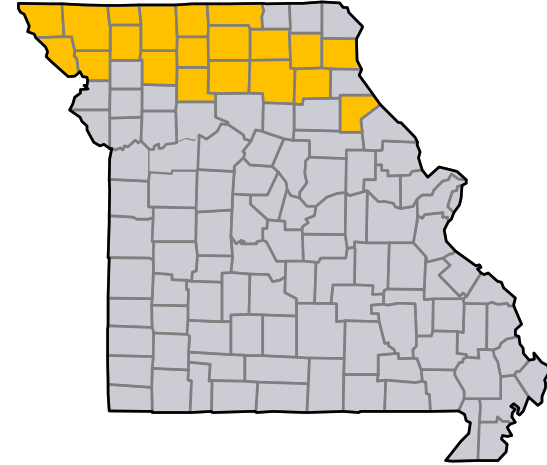


Major Disaster Declaration - Missouri



FEMA-4200-DR-MO

- Major Disaster Declaration was declared on October 31, 2014 for State of Missouri
- For severe storms, tornadoes, straight-line winds and flooding that occurred September 9-10, 2014
- Declaration provides:
 - Public Assistance for 20 counties
 - Hazard Mitigation statewide
- FCO is Laura S. Hevesi



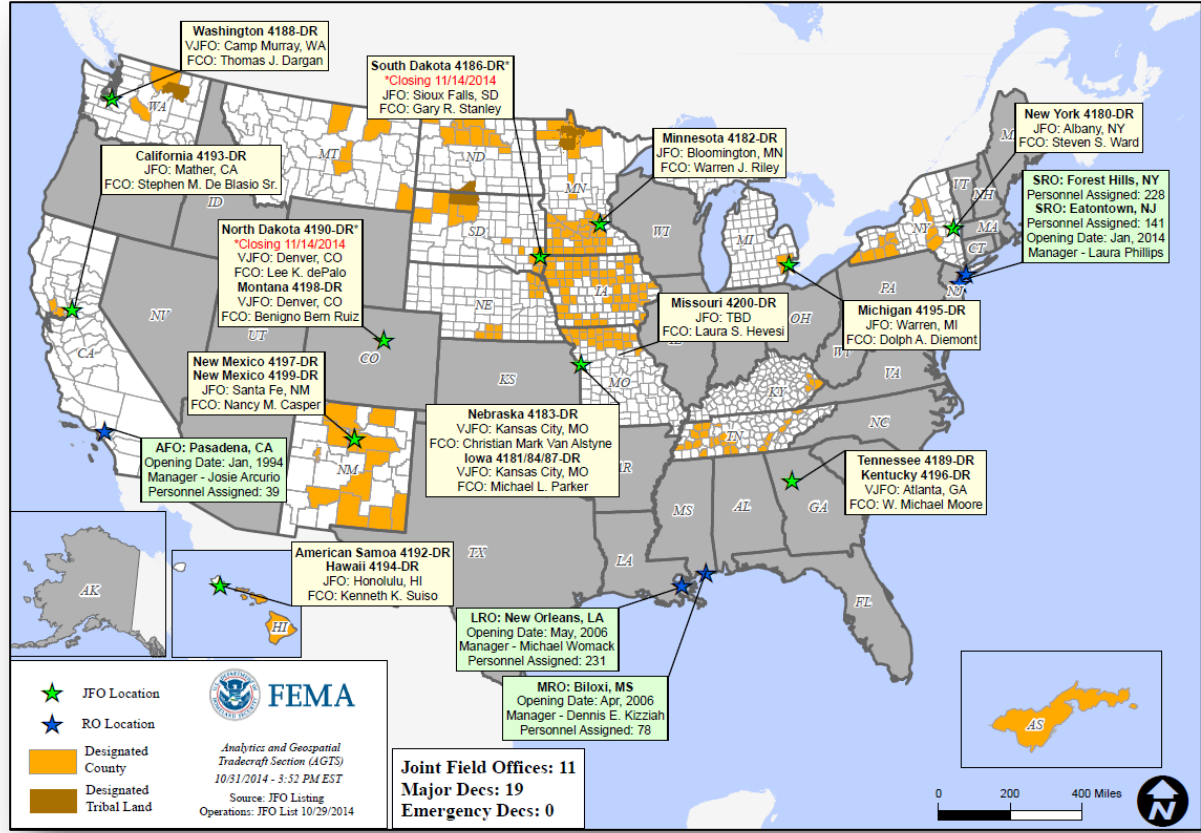
■ Declared counties

Disaster Requests & Declarations

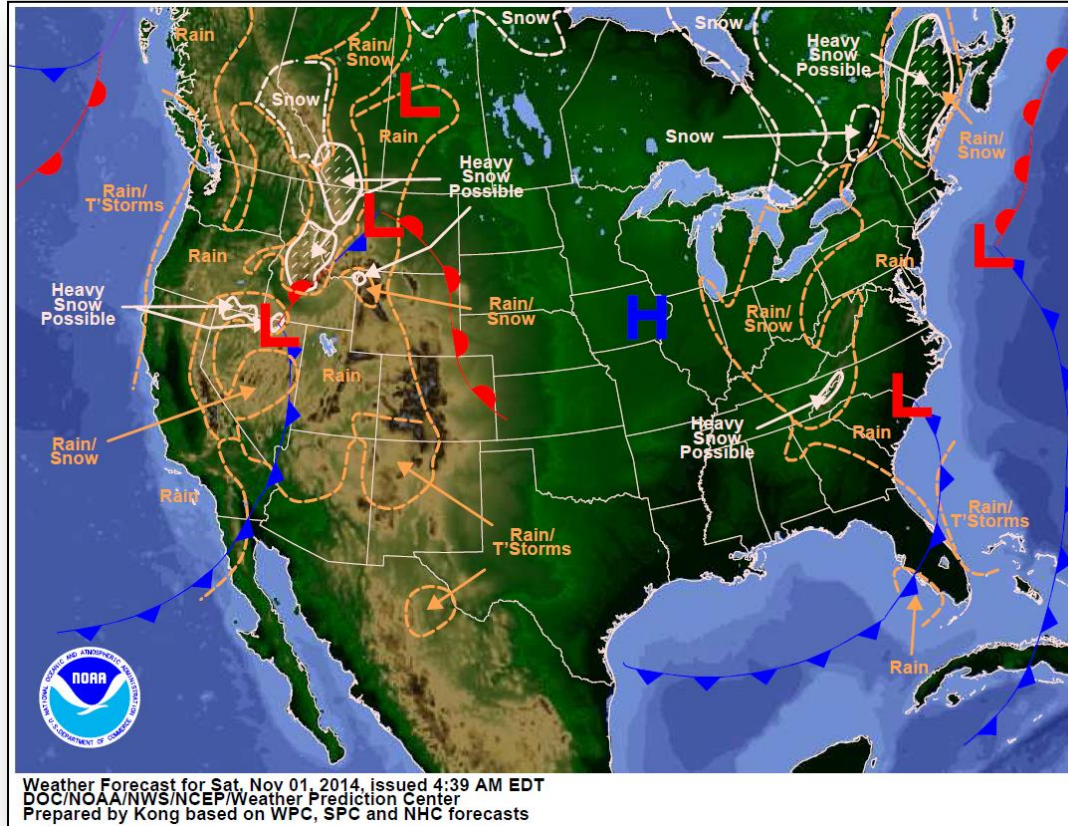


Declaration Requests in Process		Requests APPROVED (since last report)	Requests DENIED (since last report)
4	Date Requested	1	0
MO – DR Severe Storms, Tornadoes, Straight-Line Winds, & Flooding	October 22, 2014	Declared October 31, 2014	
AZ – DR Hurricane Norbert	October 22, 2014		
NV – DR Severe Storms and Flooding	October 23, 2014		
UT – DR Severe Storms and Flooding	October 22, 2014		
HI – DR Pu'u 'O'o Lava Flow	October 24, 2014		

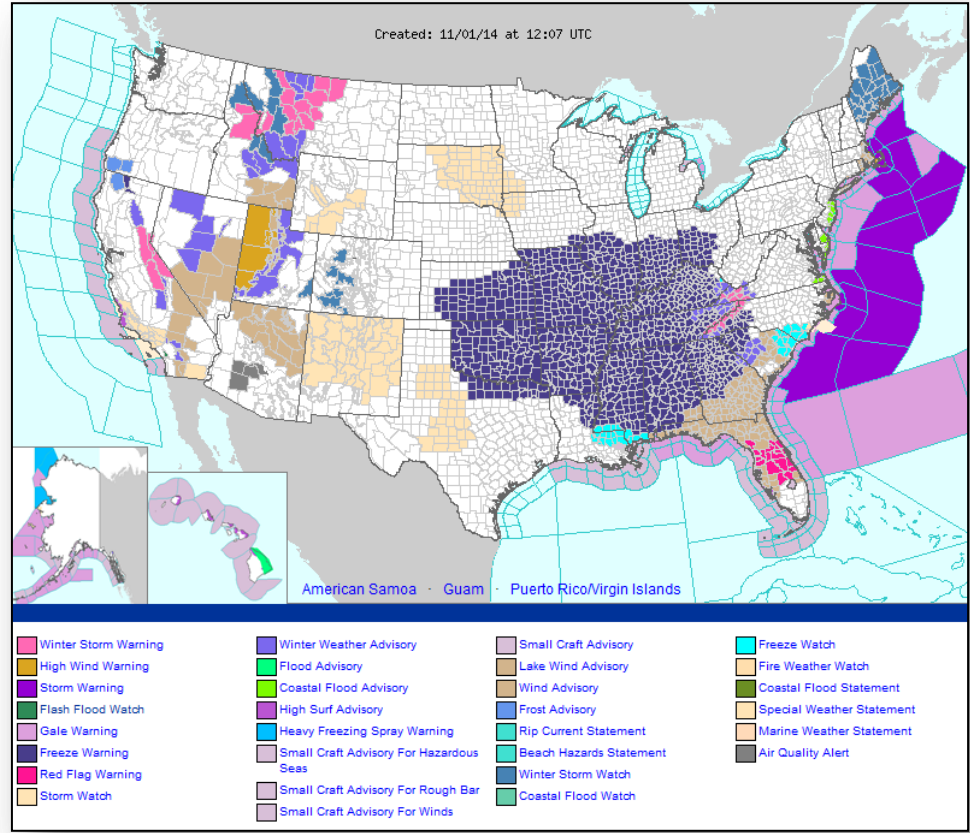
Open Field Offices as of November 1



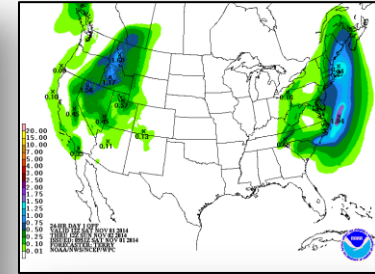
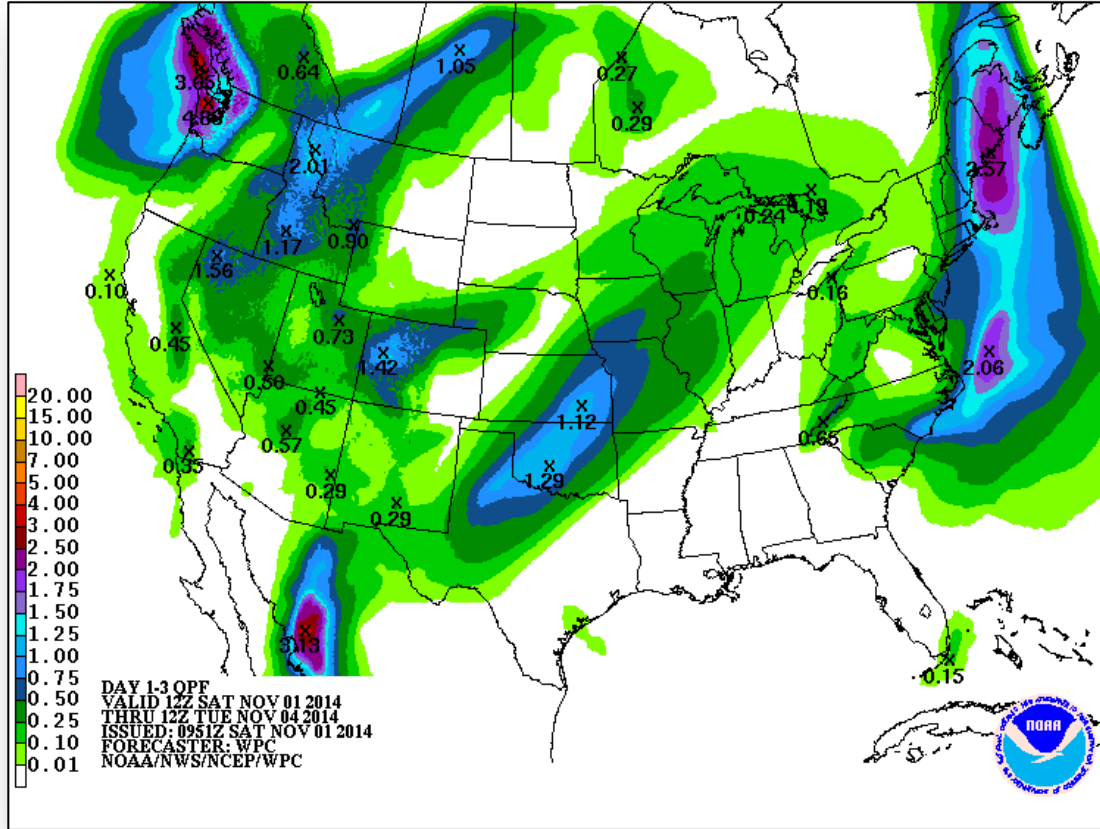
National Weather Forecast



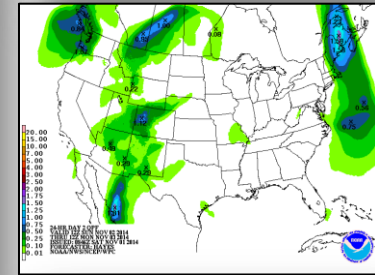
Active Watches/Warnings



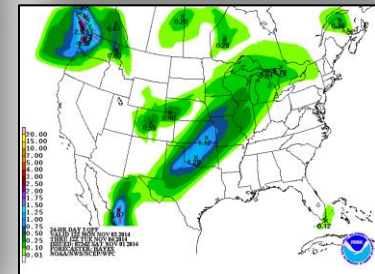
Precipitation Forecast – 3 Day



Day 1



Day 2

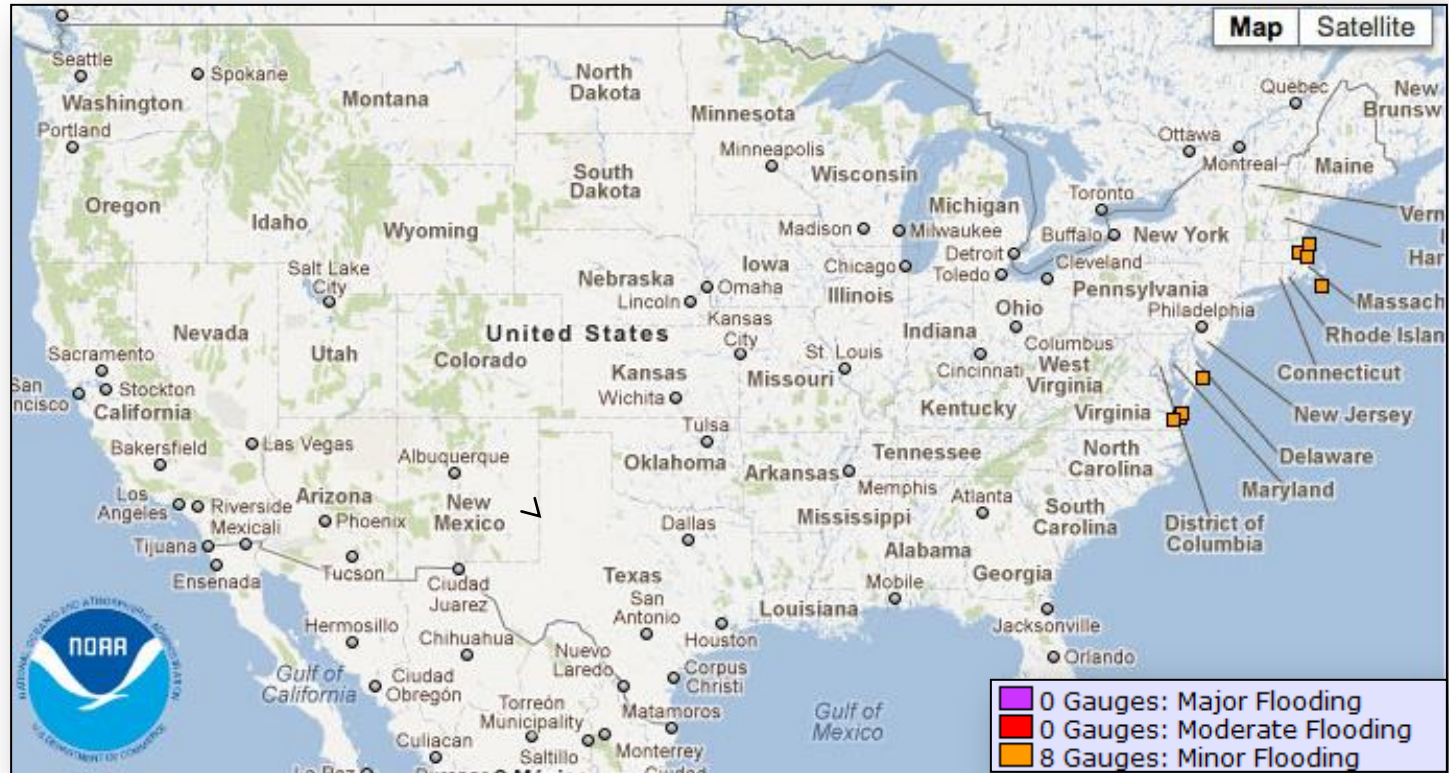


Day 3

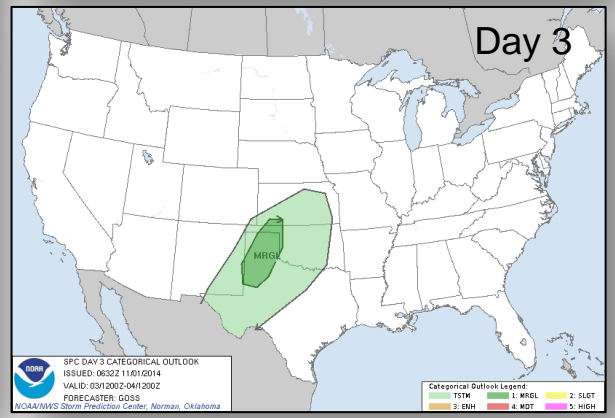
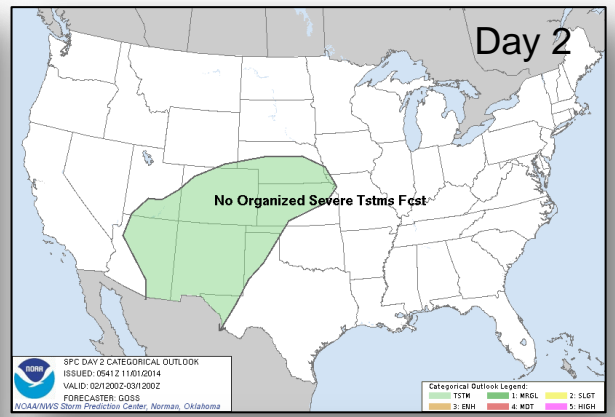
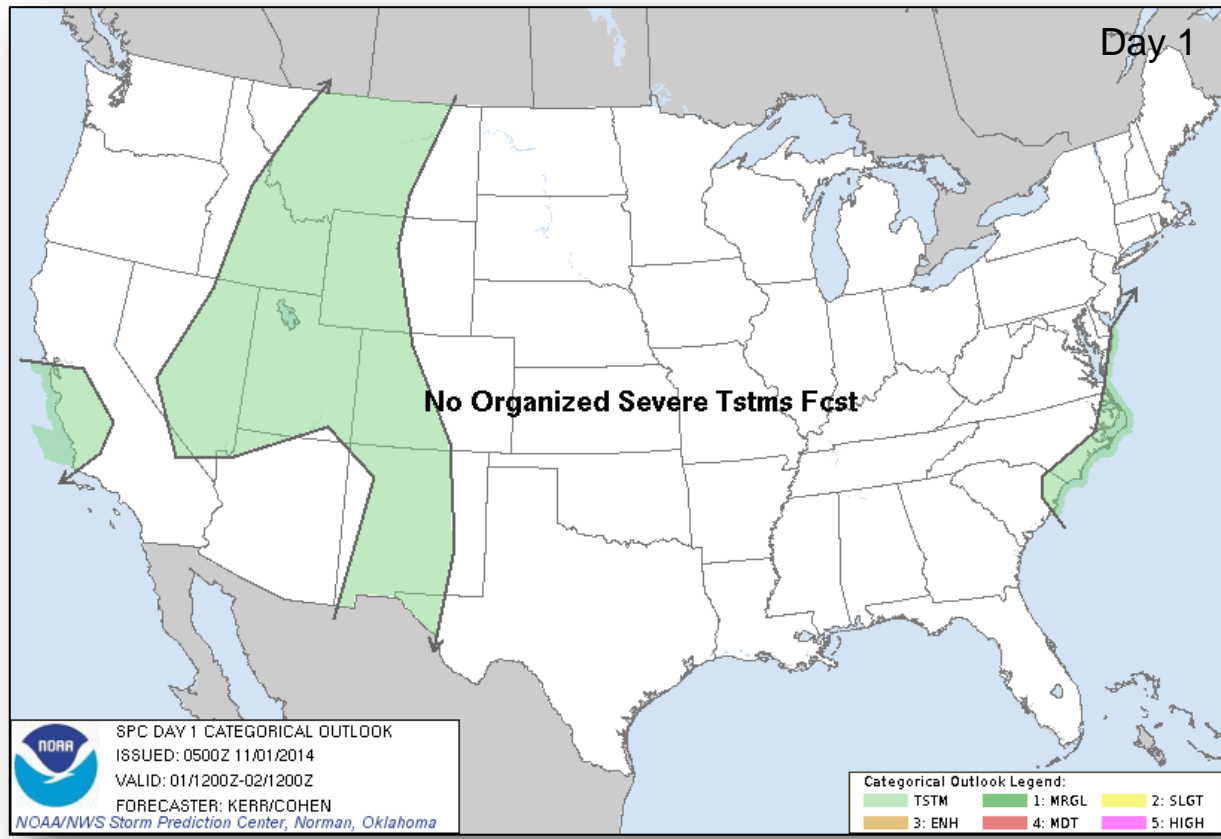
River Forecast



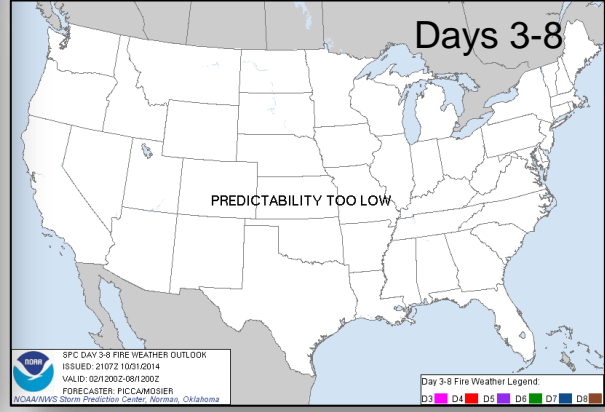
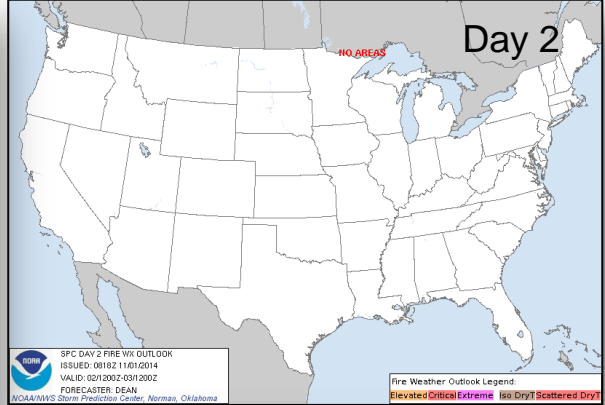
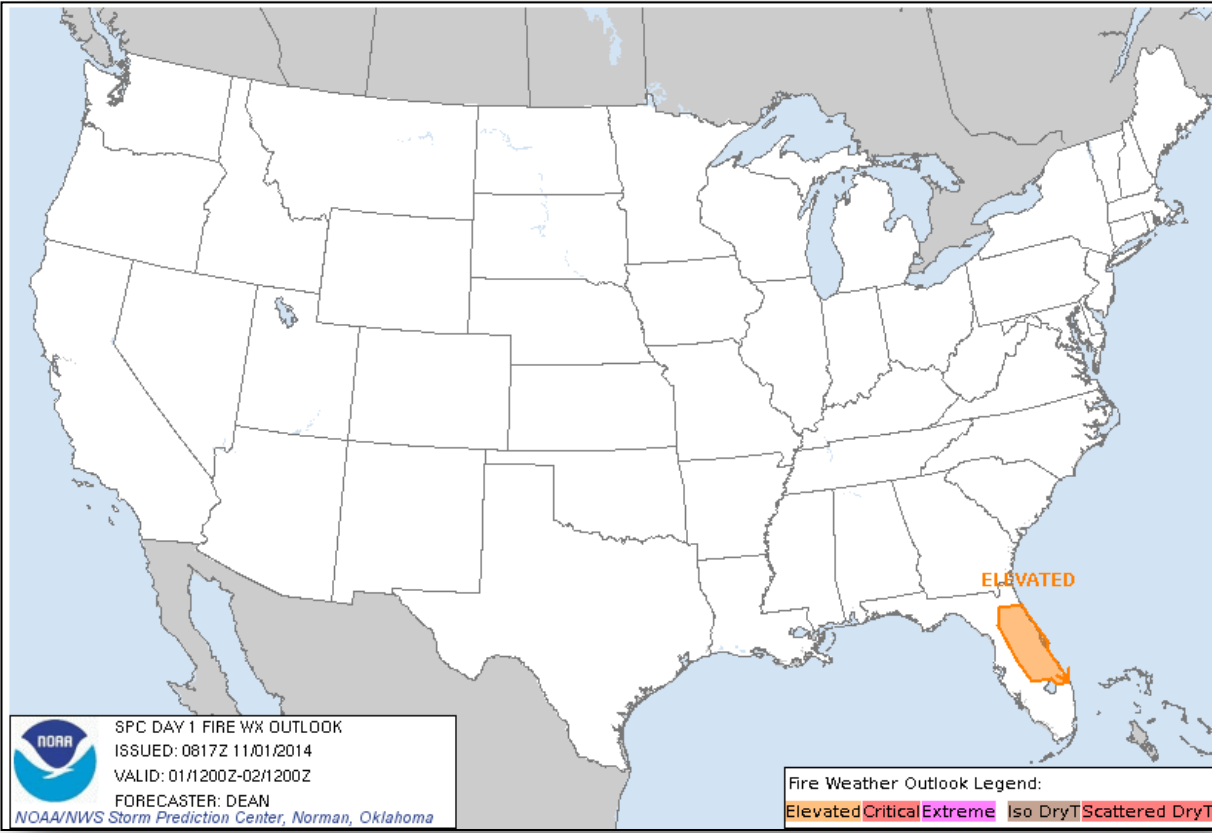
FEMA



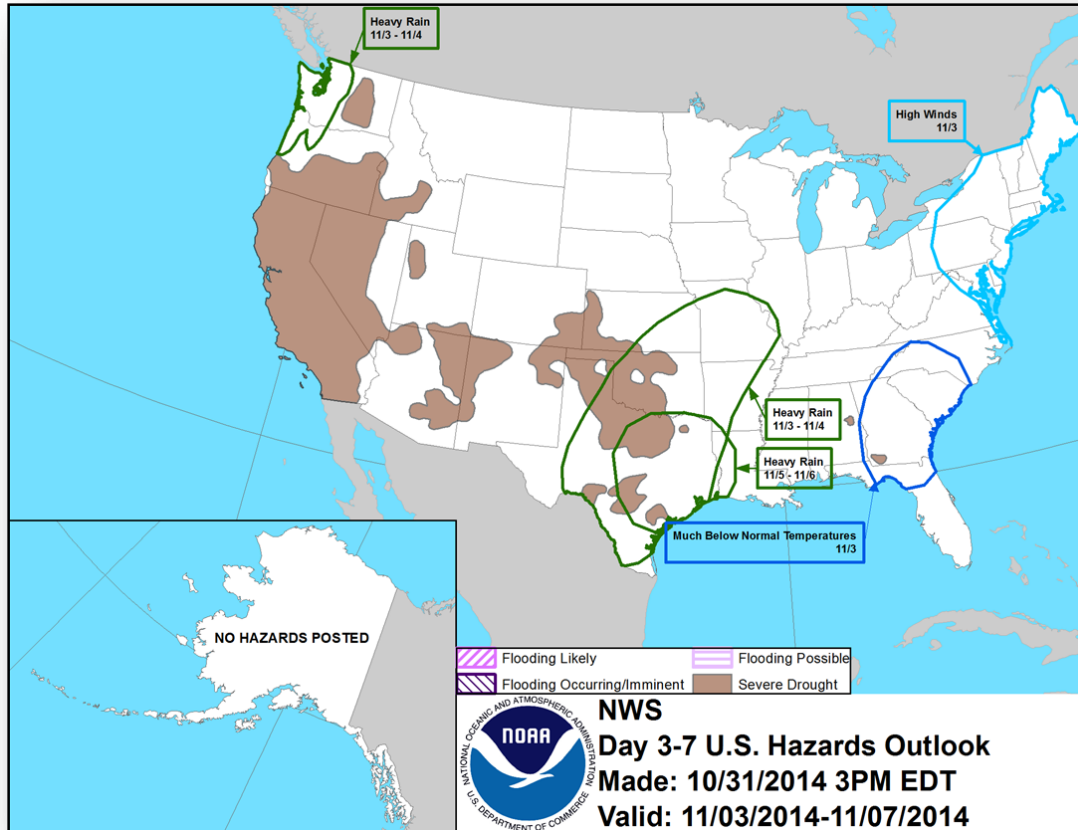
Convective Outlook, Days 1 – 3



Fire Weather Outlook, Days 1 – 8



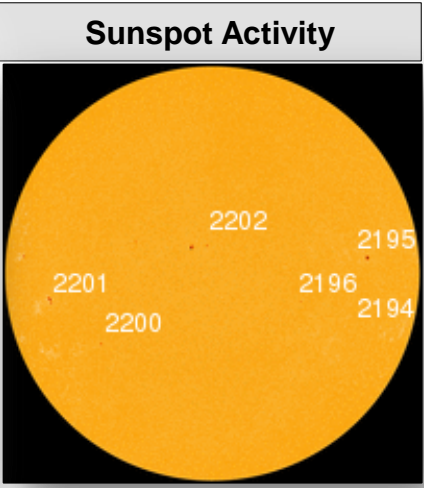
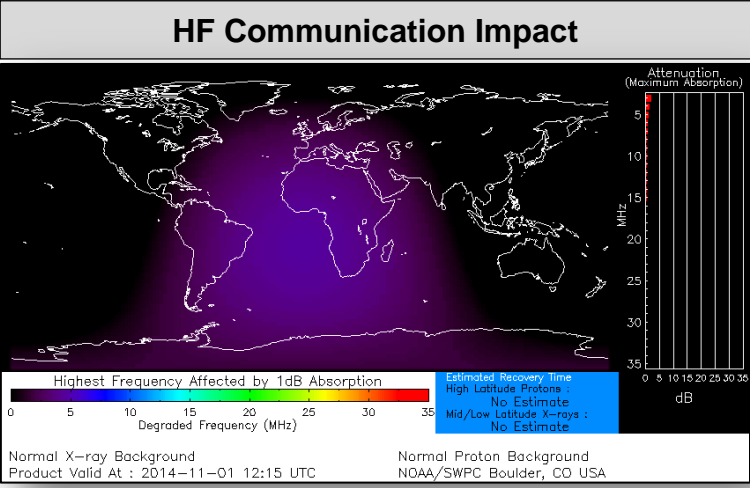
Hazard Outlook: Nov 3 – 7



Space Weather



NOAA Scales Activity (Range: 1/minor to 5/extreme)	Past 24 Hours	Current	Next 24 Hours
Space Weather Activity:	None	None	None
• Geomagnetic Storms	None	None	None
• Solar Radiation Storms	None	None	None
• Radio Blackouts	None	None	None



FEMA Readiness – Deployable Teams /Assets



Deployable Teams/Assets									
Resource	Status	Total	FMC Available		Partially Available	Not Available	Detailed Deployed Activated	Comments	Rating Criterion
FCO	Yellow	40	11	28%	0	2	27		OFDC Readiness: FCO Green Yellow Red Type 1 3+ 2 1 Type 2 4+ 3 2 Type 3 4 3 2 FDRC 3 2 1
FDRC	Green	10	6	60%	0	0	4		
US&R	Green	28	26	96%	1*	1	0	<ul style="list-style-type: none"> NM-TF1 (Red - Personnel shortages) CA-TF1 (Yellow - Logistics & management personnel available for deployment) 	<ul style="list-style-type: none"> Green = Available/FMC Yellow = Available/PMC Red = Out-of-Service Blue = Assigned/Deployed
National IMAT	Yellow	3	1	33%	0	0	2	<ul style="list-style-type: none"> IMAT East 1 – Deployed to FEMA HQ IMAT West – Deployed to GA 	<ul style="list-style-type: none"> Green: 3 avail Yellow: 1-2 avail Red: 0 avail (<i>Individual N-IMAT red if 50% of Section Chiefs and/or Team Leader is unavailable for deployment.</i>)
Regional IMAT	Yellow	13	5	38%	1	3	4	Partially Mission Capable (PMC): <ul style="list-style-type: none"> Regions VI-1 Not Mission Capable (NMC): <ul style="list-style-type: none"> Regions IV-3, V & IX-1 (personnel shortages) Deployed <ul style="list-style-type: none"> Region VI to NM Region IX-2 to CA Region X to WA Region VIII to UT Nov 2-5 for Vigilant Guard EX 	<ul style="list-style-type: none"> Green: 7 or more avail Yellow: 4 - 6 teams available Red: > 8 teams deployed/unavailable R-IMAT also red if TL Ops/Log Chief is unavailable and has no qualified replacement.
MCOV	Green	60	57	95%	0	3	0		<ul style="list-style-type: none"> Green = 80 – 100% avail Yellow = 60 – 79% avail Red = 59% or below avail Readiness remains 95%

FEMA Readiness – National/Regional Teams



National/Regional Teams									
Resource	Status	Total	FMC Available		Partially Available	Not Available	Deployed/ Activated	Comments	Rating Criterion
NWC	Green	5	5	100%	0	0	Activated	Enhanced Watch (day only)	<ul style="list-style-type: none"> • Green = FMC • Yellow = PMC • Red = NMC
NRCC	Green	2	344	89%	0	44	Not Activated		
HLT	Green	1	N/A	N/A	0	1	Activated		
DEST	Green						Not Activated		
RRCCs	Green	10	10	100%	0	0	Not Activated		
RWCs/MOCs	Green	10	10	100%	0	0	Activated	Region VI Enhanced Watch (day only)	



FEMA

FEMA's mission is to support our citizens and first responders to ensure that as a nation we work together to build, sustain, and improve our capability to prepare for, protect against, respond to, recover from, and mitigate all hazards.