



FEMA

Daily Operations Briefing

Friday, October 4, 2013

8:30 a.m. EDT

Significant Activity: Oct 3 – 4

Significant Events:

- Tropical Storm Karen
- Santa Ana Winds – Southern California

Tropical Activity:

- Atlantic – Tropical Storm Karen; Post-Tropical Cyclone Jerry (dissipated)
- Eastern Pacific – Area 1 (Low 10%)
- Central Pacific – No tropical cyclones expected through Saturday evening
- Western Pacific – Typhoon 22W (Fitow); Tropical Depression 23W

Significant Weather:

- Moderate risk of severe thunderstorms – portions of Upper & Middle Mississippi Valley
- Heavy snow – Northern Rockies/Plains
- Critical Fire Weather Areas: CA & AZ
- Red Flag Warnings: CA & AZ
- Space Weather: None observed or predicted

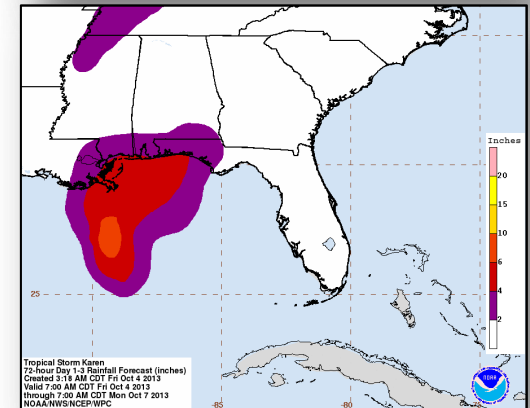
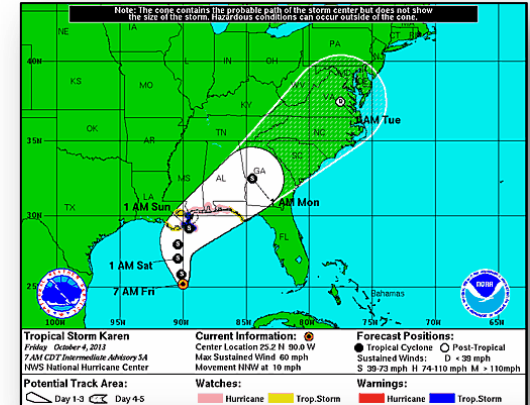
Earthquake Activity: No significant activity

Declaration Activity: None

Tropical Storm Karen

Current Situation:

- Located about 275 mi SSW of the mouth of the Mississippi River
- Moving NNW at 10 mph
- Maximum sustained winds - 60 mph with higher gusts
- North turn w/ decrease in forward speed expected later today; gradual turn to northeast on Saturday or Saturday night
- Tropical Storm Force winds extend outward up to 140 miles
- Hurricane Watch: Grand Isle, LA to west of Destin, FL
- TS Warning: Grand Isle, LA to Pearl River
- TS Watch: Grand Isle, LA – Morgan City, LA; Metro New Orleans; Lakes Maurepas & Pontchartrain; Destin, FL – Indian Pass, FL
- Rainfall: 4 – 8 in over central & eastern Gulf; isolated 12 inches
- Storm Surge: 1-3 feet Terrebonne Bay to Mississippi River
3-5 feet Mississippi River to Mobile Bay



Tropical Storm Karen Preparations



FEMA Region IV:

- RRCC activated to Level III w/ ESFs 1,3,6,8
- LNOs deployed to Florida, Mississippi & Alabama
- Region IV IMATs deploying to AL & MS today

Florida

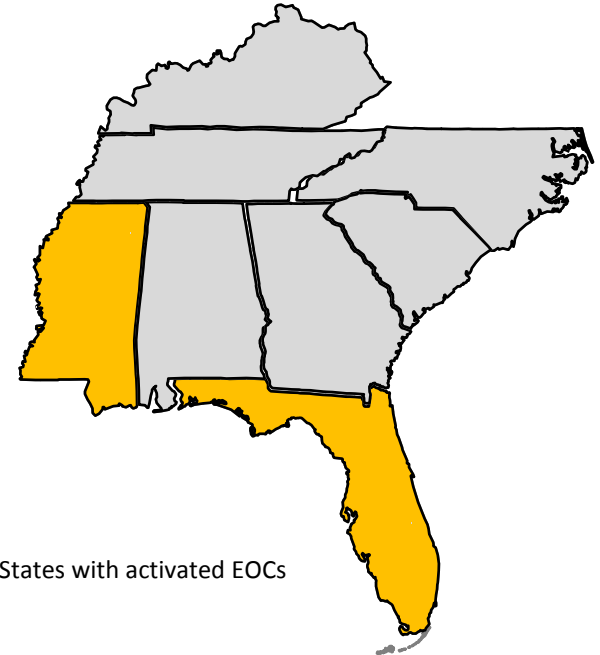
- State EOC is activated to Level II (Partial Activation)
- National Guard personnel activated

Mississippi

- State EOC is at Level I (Fully Activated)
- Governor declared a State of Emergency on October 3

Alabama

- State EOC is not activated



Tropical Storm Karen Preparations

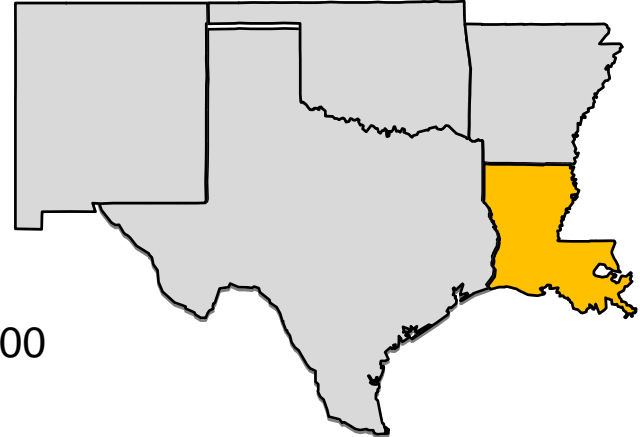


FEMA Region VI

- RRCC activated to Level III
- Region VI IMAT - deploying to Louisiana EOC today

Louisiana

- Governor declared a State of Emergency Oct 3
- GOHSEP - activated to Level III (Crisis Action Team)
- 650 National Guard personnel activated Oct 3; additional 7,000 on standby
- Preparatory actions underway; working with USACE & staging assets



■ = States with activated EOCs

Tropical Storm Karen Preparations



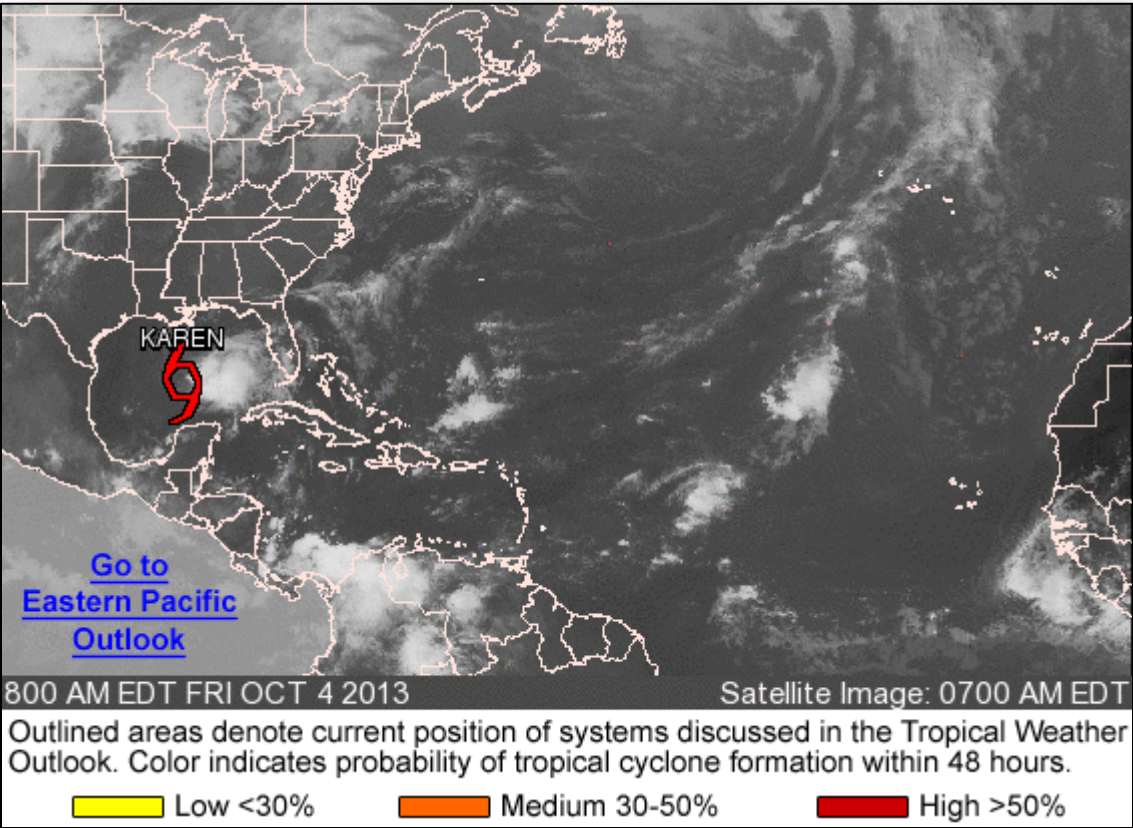
FEMA Headquarters:

- National Response Coordination Center (NRCC) - activated to Level III (Day only)
- National Watch Center - Enhanced Watch Level (8:00 pm to 8:00 am EDT)
- Resource Support - Atlanta Distribution Center (DC) has been activated
- National Processing Service Centers - activated from 7:00 a.m. to 1:00 am
- National IMAT-East - deploying to Florida EOC today
- Urban Search & Rescue - on Advisory status

Atlantic – Tropical Outlook



FEMA

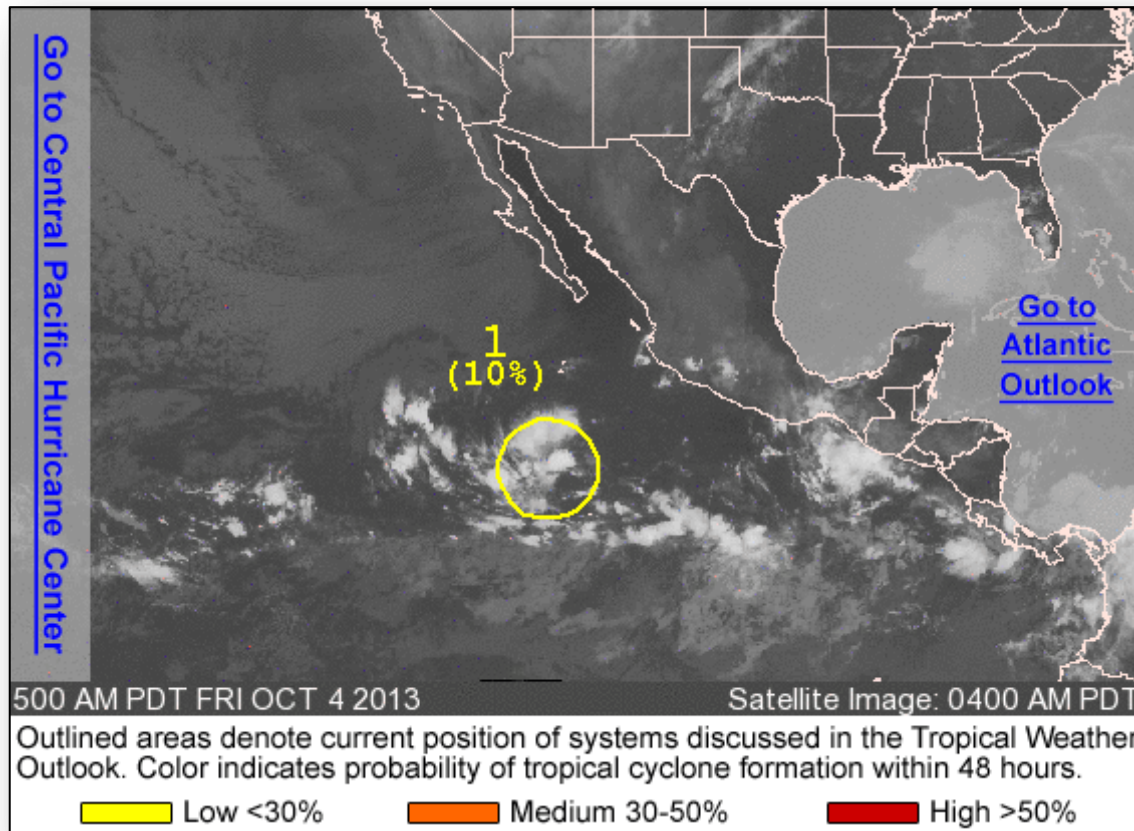


[Go to Eastern Pacific Outlook](#)

Eastern Pacific – Tropical Outlook



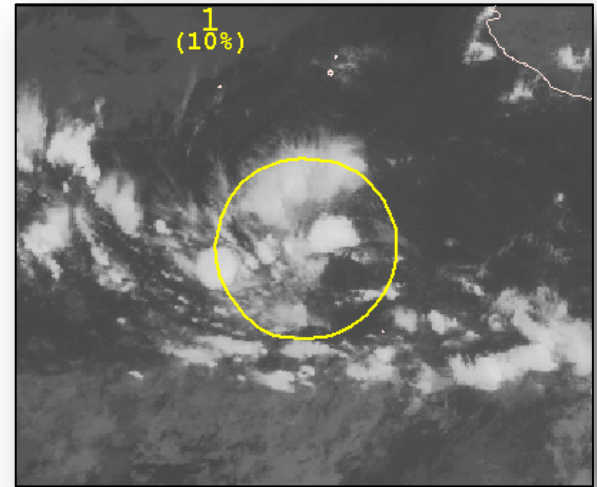
FEMA



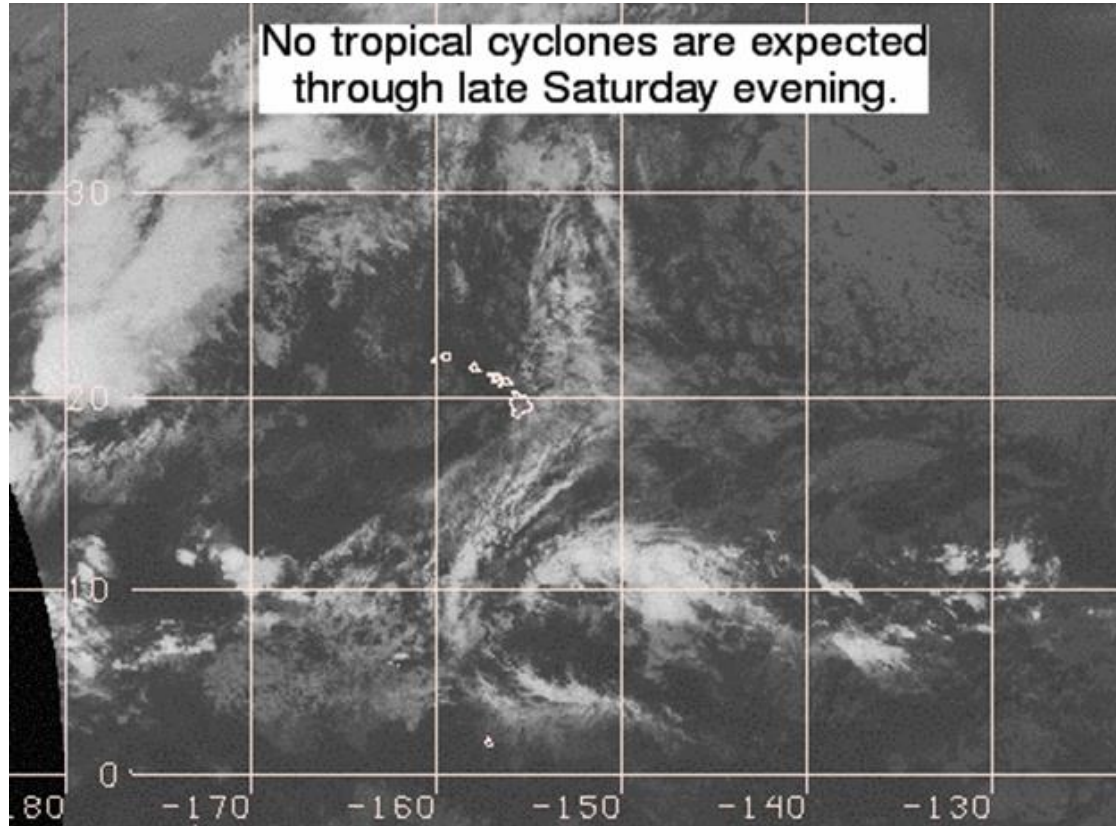
Eastern – Area 1

As of 8:00 a.m. EDT

- Located 700 miles south of the southern tip of Baja California Peninsula
- Continues to produce disorganized showers & thunderstorms
- Development, if any, should be slow to occur over next several days
- Moving westward at 10 mph
- Probability of tropical cyclone development:
 - Next 48 hours: low chance (10%)
 - Next 5 days: low chance (20%)



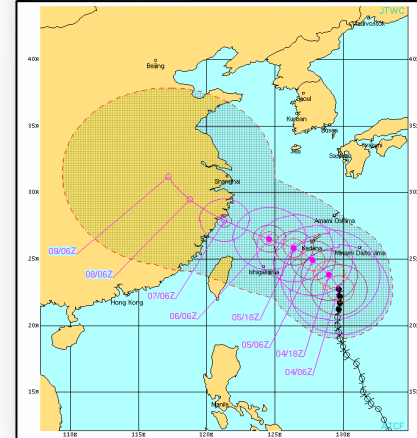
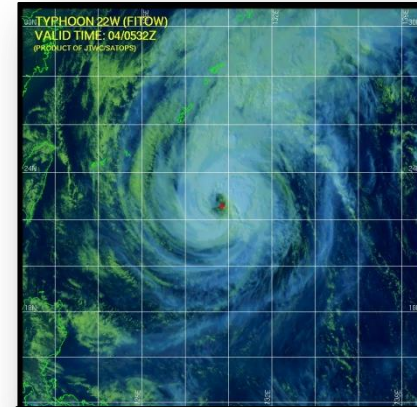
Central Pacific – Tropical Outlook



Western Pacific – Typhoon 22W (Fitow)

As of 8:00 a.m. EDT

- Typhoon 22W (Fitow) is located 288 miles SSE of Kadena AB
- The system is moving northward at 6 mph
- Maximum sustained winds are 98 mph, gusting to 121 mph
- Closest Point of Approach to Kadena AB is 86 miles SE at 9:00 am on Saturday, Oct 5



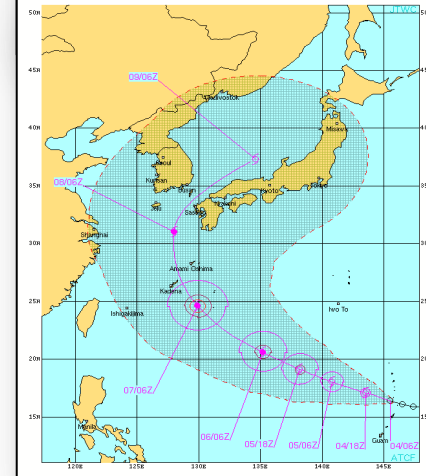
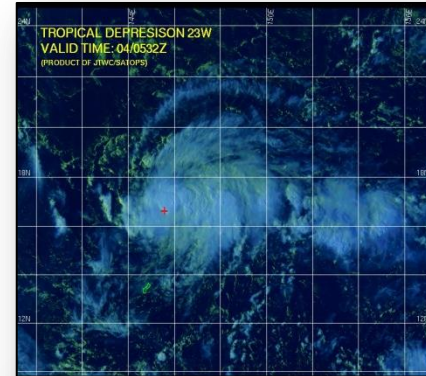
Western Pacific – Tropical Depression 23W



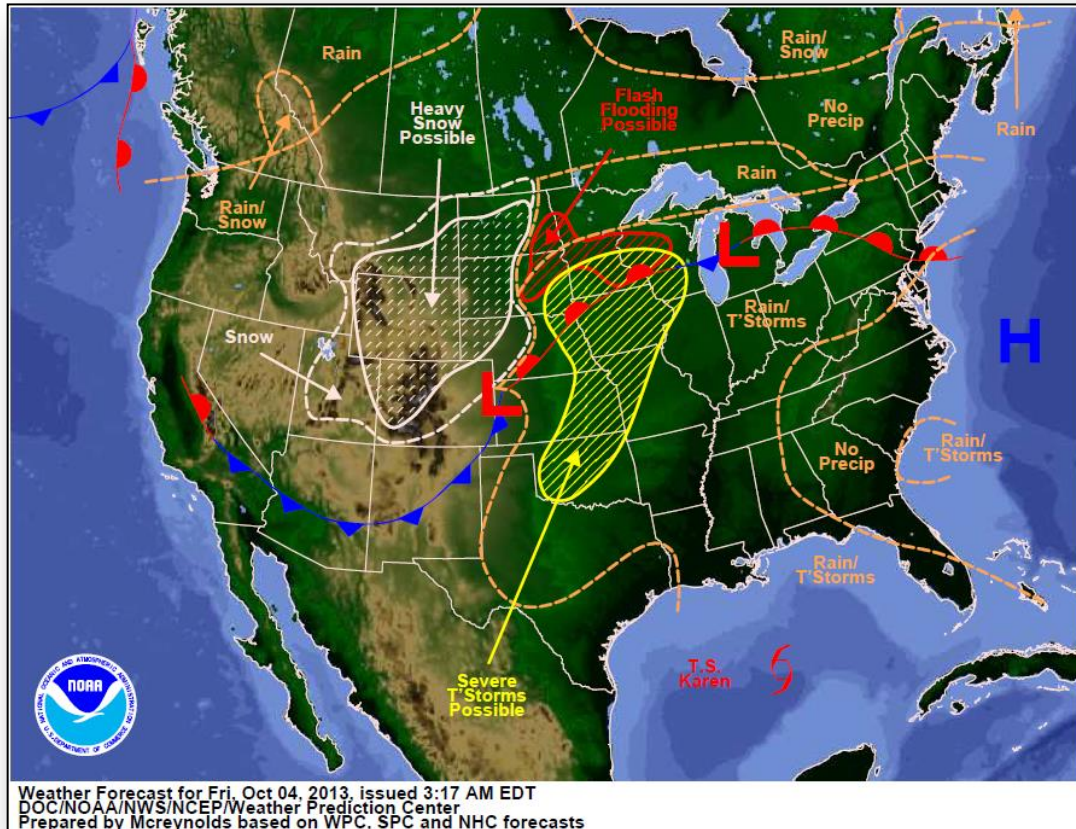
FEMA

As of 8:00 a.m. EDT

- Tropical Depression 23W is located 191 miles NNE of Anderson AFB, Guam
- The system is moving WNW at 12 mph
- Maximum sustained winds are 35 mph gusting to 46 mph
- As TD 23W moves away from the Northern Mariana Islands, expect rain & winds to diminish
- Closest Point of Approach to Kadena AB is 49 miles NW at 11:00 am on Monday, Oct 7



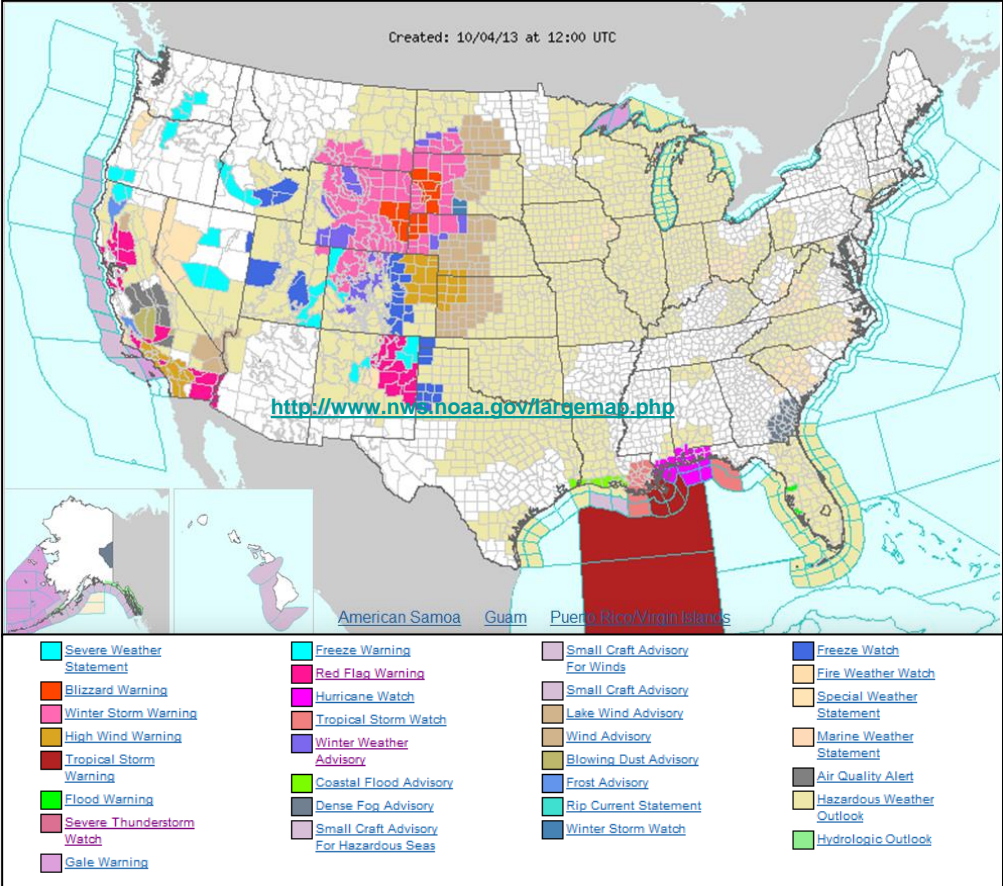
National Weather Forecast



Active Watches/Warnings



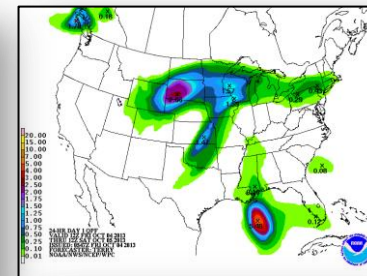
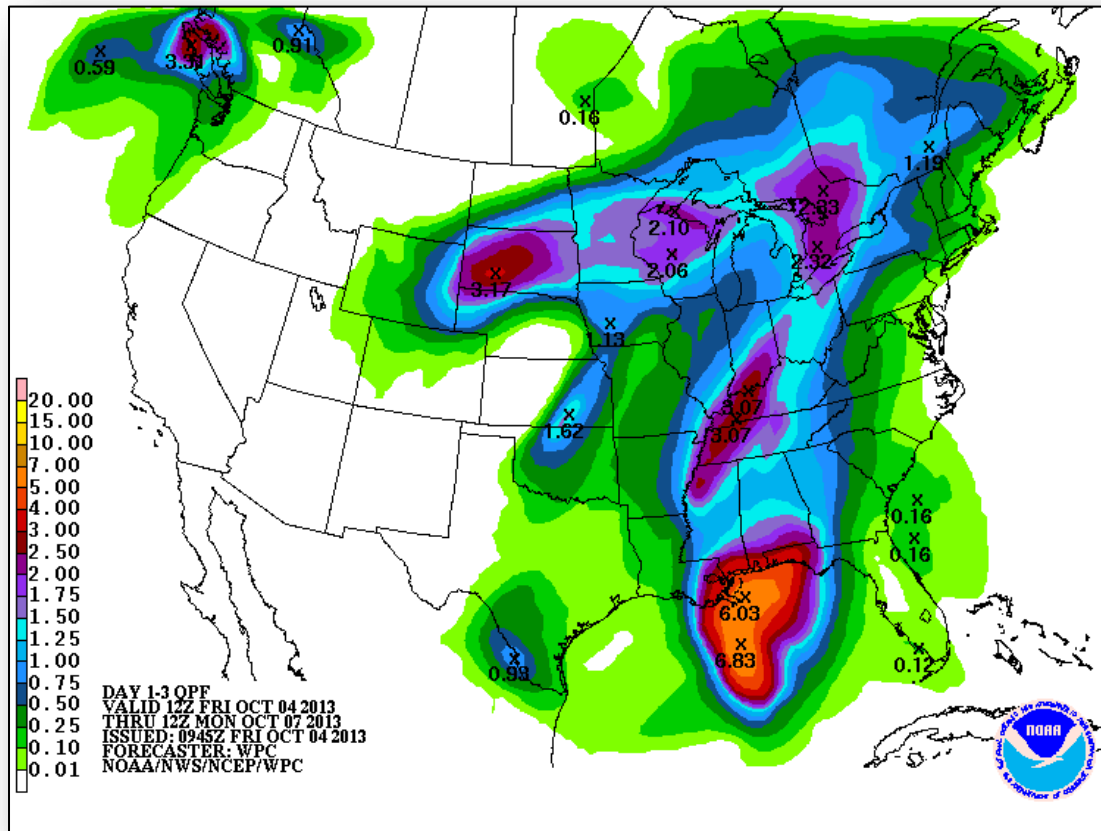
FEMA



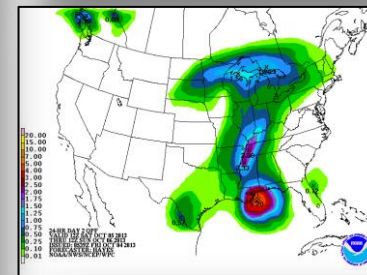
Precipitation Forecast – 3 Day



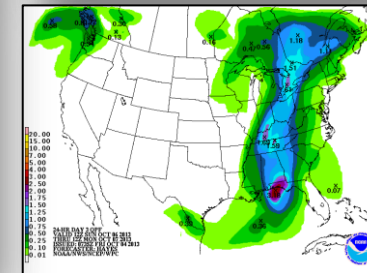
FEMA



Day 1



Day 2

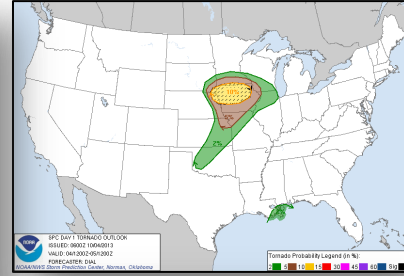
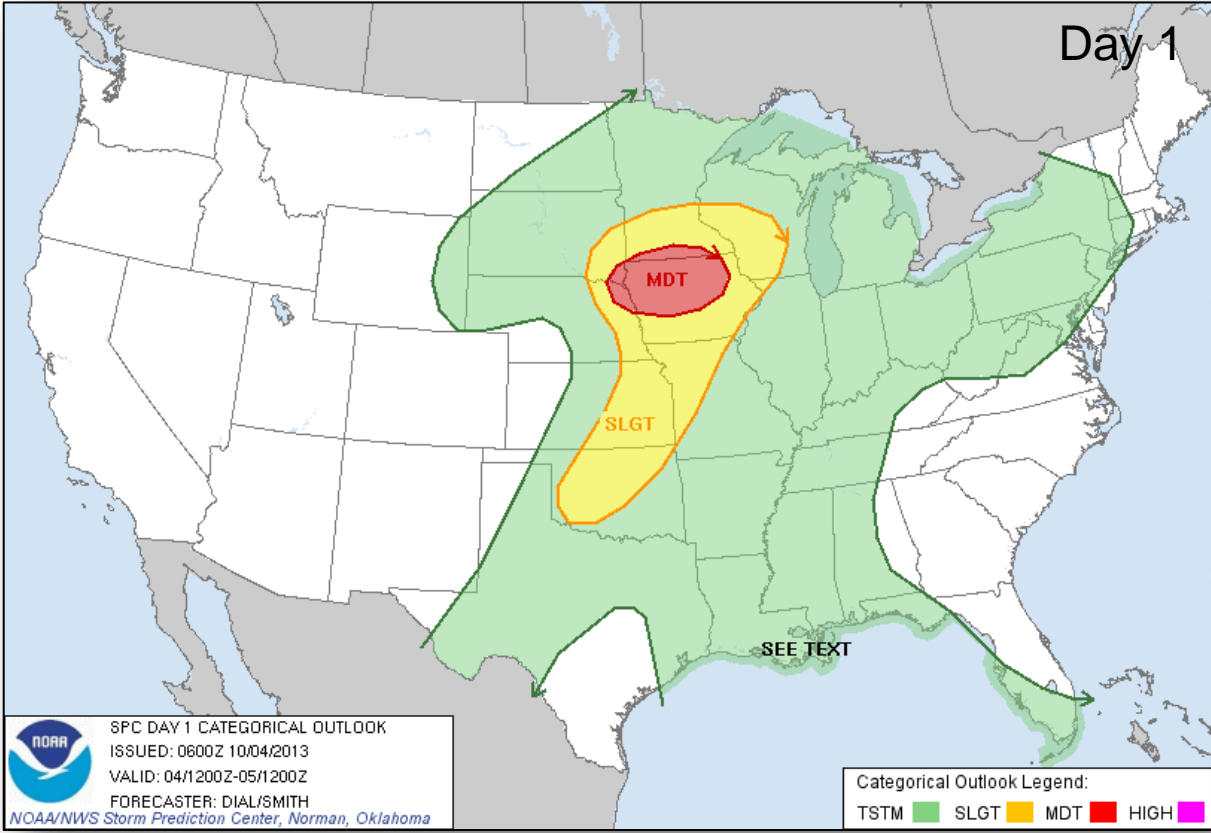


Day 3

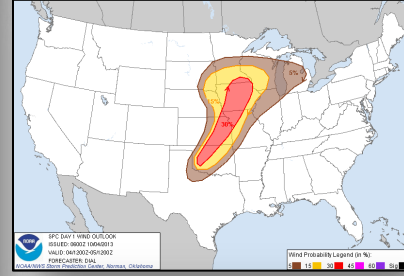
River Forecast – 7 Day



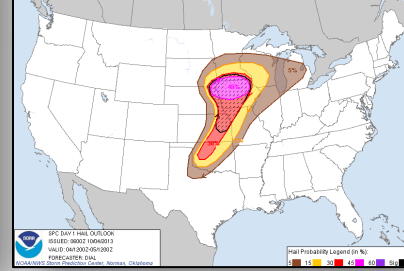
Convective Outlooks Days 1 – 3



Tornado

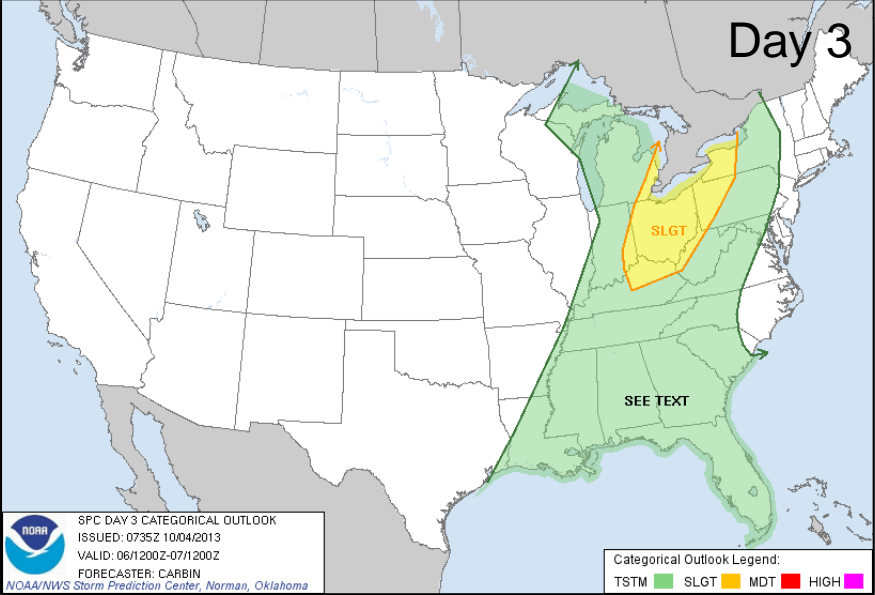
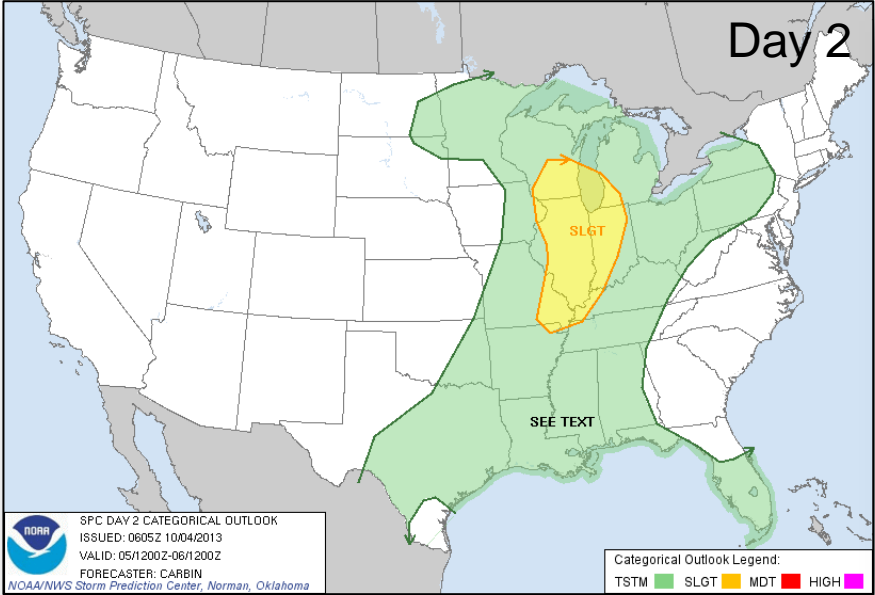


Wind

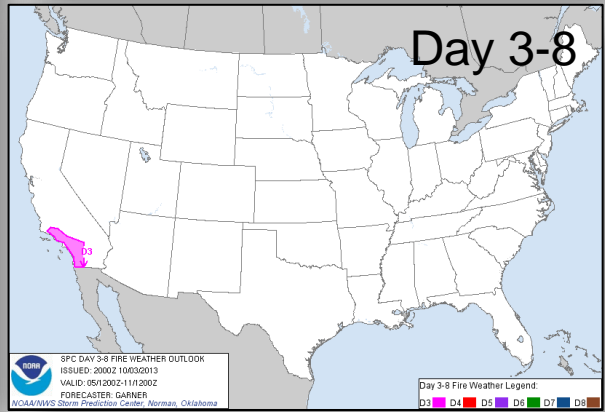
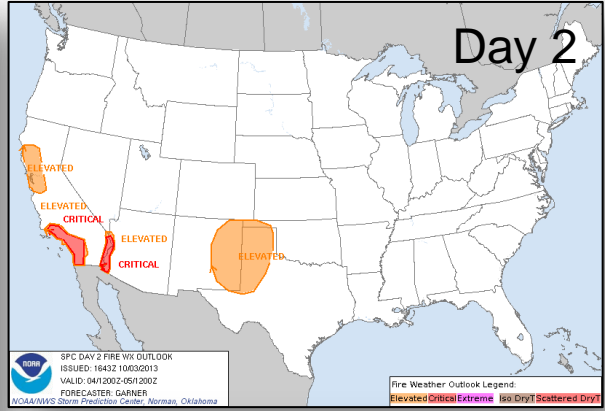
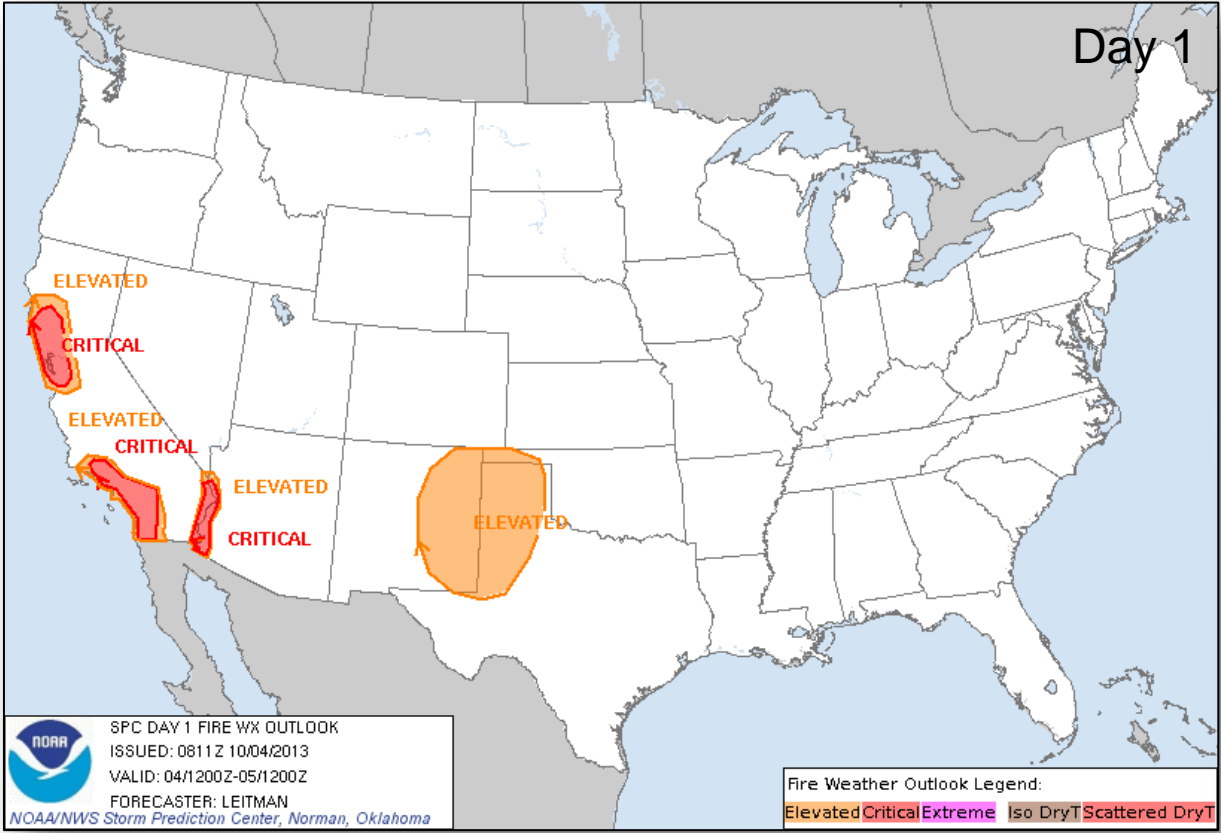


Hail

Convective Outlooks Days 1 – 3



Critical Fire Weather Areas Days 1 – 8



Santa Ana Winds Southern California

Definition

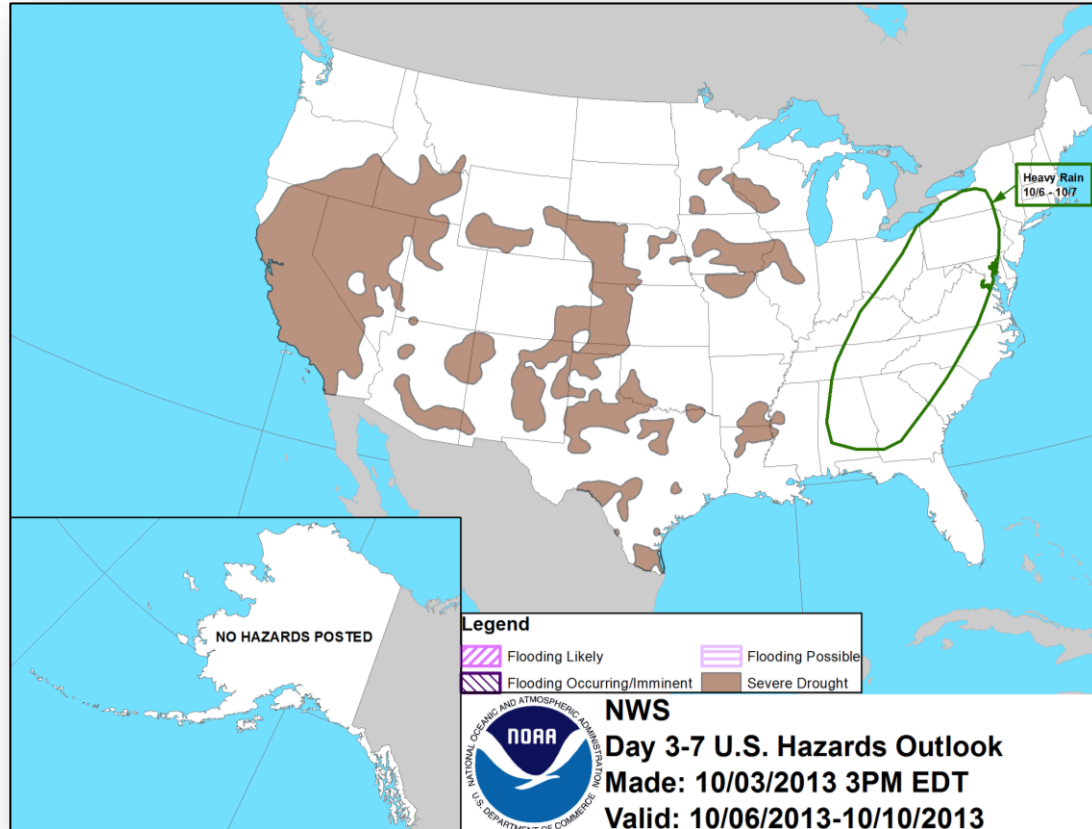
- A weather condition in which strong, hot, dust-bearing winds descend to the Pacific Coast around Los Angeles from Inland Desert Regions

Impacts

- High Fire Danger expected Friday through Sunday
- Widespread, very low relative humidity for an extended period
- Strong, gusty northeast to east winds for the passes, canyons & along the western slopes of the mountains & foothills
- Very warm for coast & valleys



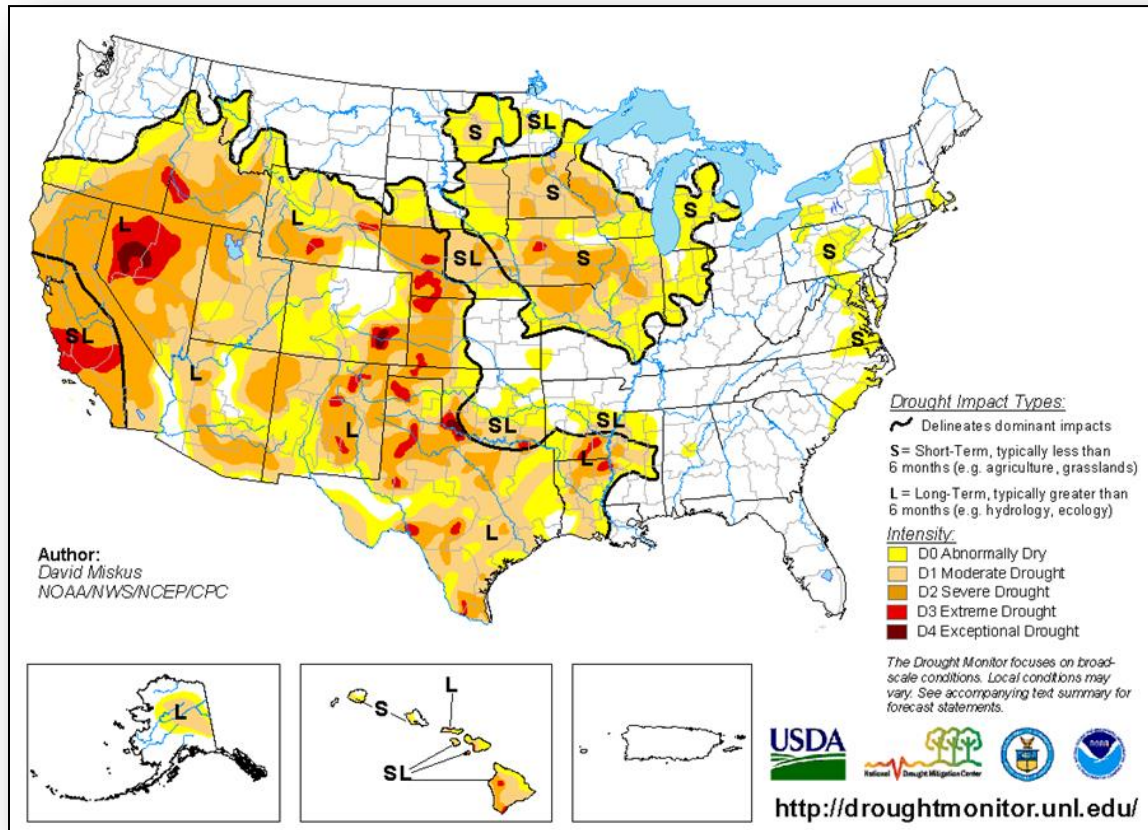
Hazard Outlook: Oct 6 – 10



U.S. Drought Monitor – as of October 1



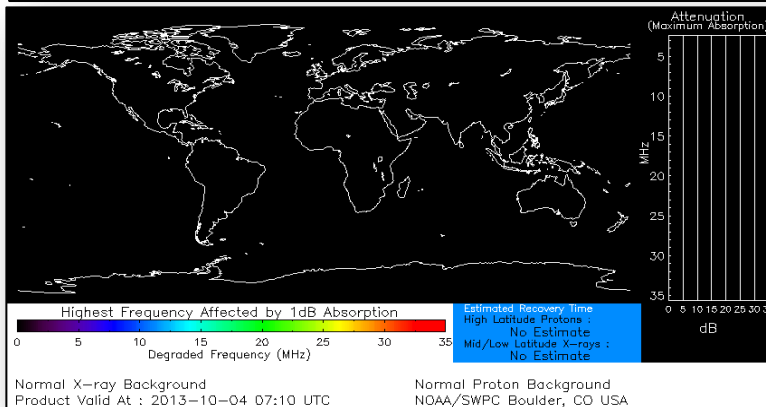
FEMA



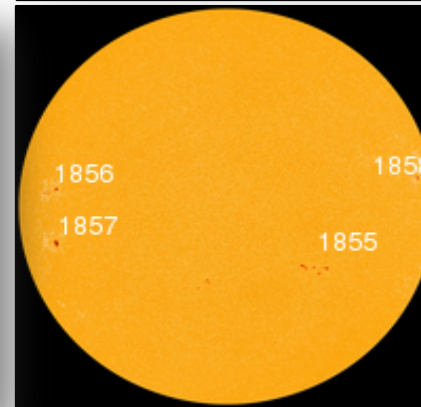
Space Weather

NOAA Scales Activity (Range: 1/minor to 5/extreme)	Past 24 Hours	Current	Next 24 Hours
Space Weather Activity:	None	None	None
• Geomagnetic Storms	None	None	None
• Solar Radiation Storms	None	None	None
• Radio Blackouts	None	None	None

HF Communication Impact



Sunspot Activity



Disaster Requests & Declarations



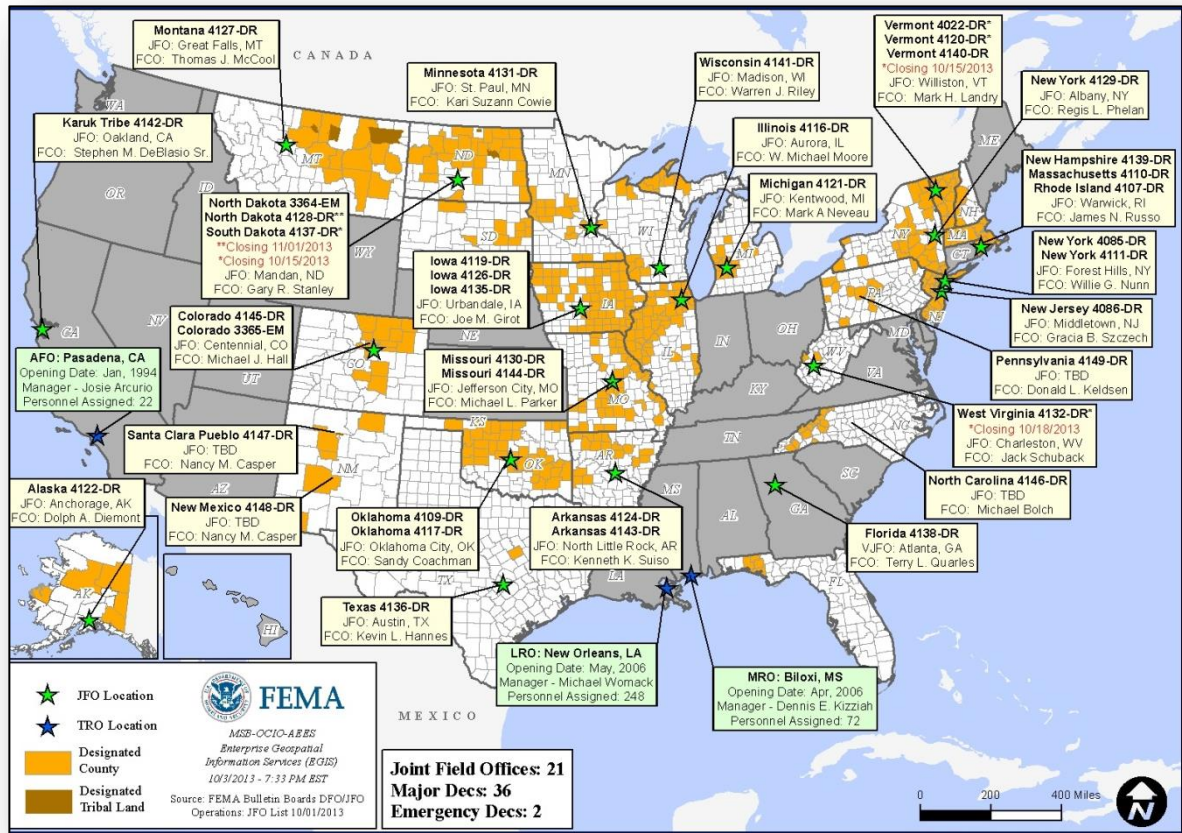
Declaration Requests in Process		Requests APPROVED (since last report)	Requests DENIED (since last report)
1	Date Requested		
KS – DR Severe Storms, Straight-line Winds, Tornadoes, and Flooding	September 25, 2013		

Joint Preliminary Damage Assessments



Region	State / Location	Event	IA/PA	Number of Counties		Start – End
				Requested	Complete	
VIII	UT	Flooding September 7, 2013	PA	8 counties & 1 tribe	7 counties & 1 tribe	9/25 – 10/4
IX	CA	Rim Fire August-September 2013	PA	5	5	9/30 – 10/3

Open Field Offices as of October 4, 2013



OFDC Cadre Member Status

Federal Coordinating Officer

Deployed	Detailed	Available	Not Available	Total
29	1	9	1	40
Total Available	Type 1	Type 2	Type 3	Type 4
10*	1	5	2	1

* All Type 1 FCOs are available unless deployed to a Level 1 event

Federal Disaster Recovery Coordinator

Deployed	Available	Pending Hire	On Board	Positions
8	1	1	9	10

As of: 10/2/2013

MCOV Fleet / Deployment Status



MCOV FLEET STATUS						MCOV DISASTER SUPPORT DEPLOYMENTS					
Location	Units Assigned	Available FMC	Deployed Committed	PMC	Unavailable	DR-State	OPCON	En Route	Unit Prep	Open Request	Notes:
MERS Maynard	3	3				DR-4145-CO	21				
MERS Frederick	8	6	2								
MERS Thomasville	14	11	3								
DC Ft Worth	20	5	14		1						
MERS Denver	2	0	2								
MERS Bothell	4	2			2						
Sacramento	4	3			1						
TOTAL	55	30	21	0	4	TOTAL	21	0	0	0	
Included in above totals, units in route for turn-in.											

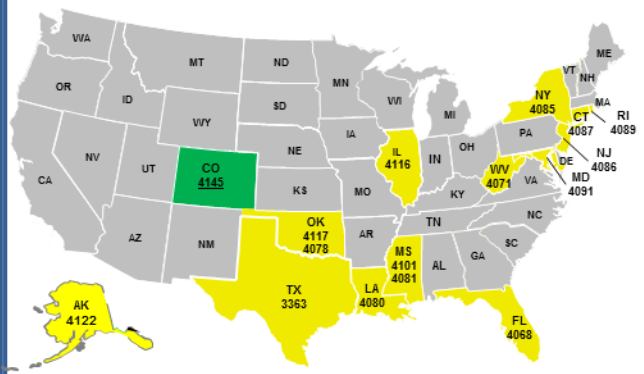
Fully Mission Capable	51
Partially Mission Capable	0
Non-Mission Capable	4
Total Not Deployed	34

Data as of: 10/03/13 @ 1500

Active IA Disasters - Referral Status & Awards



Active IA Disasters



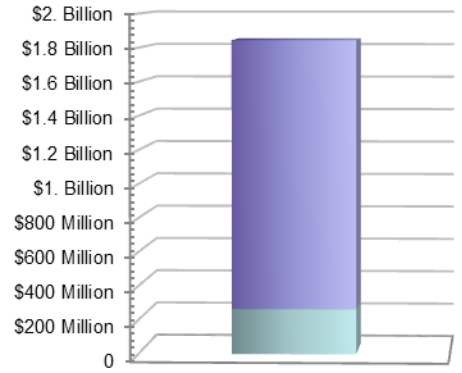
Legend

# of DRs	
1	Open Registration Period (60 days from Declaration, unless extended)
15	IHP Active – IHP Assistance period remains open (18 Months from Declaration)

16 Total IHP Active Disasters (All information on this slide reflects data for these disasters)

Total IHP Awards

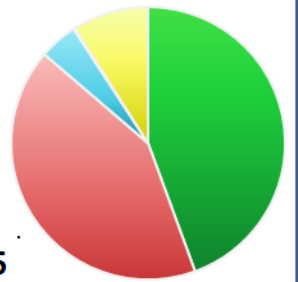
Total Awards:
322,761
Total Max Grants:
7,643



Total Awards Amount: \$1,844,728,316

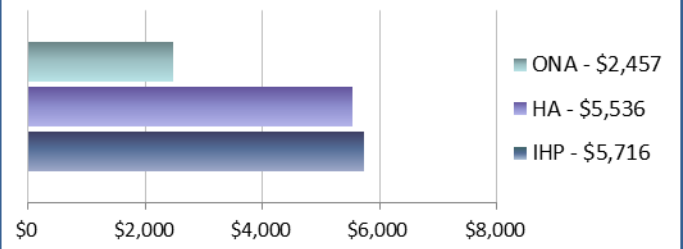
IHP Referral Status

- Approved - 322,761
- Ineligible - 304,320
- Withdrawn - 32,789
- Pending (FEMA) - 1,305
- Pending (Applicant) - 65,630



Total Referrals - 726,805

Average IHP Awards



Max Grants = Applicants awarded maximum IHP (\$32,400 for Major Disasters declared FY 2014)

Data as of: 10/03/13 @ 1500

IA Registration Statistics



IA Registrations and IHP Amounts as of October 3, 2013 @ 1500

DR/EM # - State	Registrations	Approved Applicants	Total HA Approved	Total ONA Approved	Total IHP Approved
4145 - CO	22,300	12,586	\$34,493,264	\$2,154,239	\$36,647,503
Totals	22,300	12,586	\$34,493,264	\$2,154,239	\$36,647,503
24 hour change	+369	+299	+\$847,868	+\$108,719	+\$956,587

NPSC Call Data for October 2, 2013

Total Calls Answered (Help Line + Registration Intake)	2,755
Average time to answer call	12 seconds
Maximum / Minimum time to answer a call	27 seconds / 9 seconds

Housing Inspection Statistics



Inspection Data as of October 3, 2013 @ 1500

DR #-State	Inspectors	Inspections Assigned	Inspections Completed	Inspection % Complete	Turnaround Time (Days)
4145 - CO	59	19,117	18,460	96.56%	2.4
TOTAL	59	19,117	18,460	96.56%	2.4
24 hour change	-7	+354	+519	+0.94%	-0.1

FEMA Workforce Status Report



Workforce Type	Total	Available To Deploy	Deployed	Committed To Other Activities or Exempt from Deployment	Operational Readiness
Reservist	6,336	3,366 (53%)	2,357 (37%)	613 (10%)	Partially Mission Capable
Cadre of On-Call Response Employees (CORE)	2,662	980 (37%)	1,679 (63%)	3 (0%)	Partially Mission Capable
Permanent Full Time (PFT)	5,050	968 (19%)	445 (9%)	*3,637 (72%)	Non-Mission Capable
FEMA Corps	636	0 (0%)	633 (100%)	3 (0%)	Non-Mission Capable
**DHS Surge Capacity Force	-----	-----	-----	-----	Awaiting DHS/FEMA Activation
Workforce Totals	14,684	5,314 (36%)	5,114 (35%)	4,256 (29%)	

= 60%-100% Available | Mission Capable
 = 29% - 0% Available | Non-Mission Capable
 = 30% - 59% Available | Partially Mission Capable
 = Awaiting DHS | FEMA Activation

*This number reflects total PFTs that are currently furloughed due to a lapse in appropriations.

**Surge Figures are not presented due to lack of information from OFAs

Employees may be committed to other activities or exempt from deployment based on: leave status, training, travel related issues, or personnel status as ERG or mission critical home station employee or furlough.

Data as of 10/3/13

IMAT Status



National Teams					
Team	Status	Team	Status	Team	Status
Blue/White		East	FL	West	CO
Regional Teams					
Team	Status	Team	Status	Team	Status
Region I		Region V		Region VIII	
Region II		Region VI-1	LA	Region IX-1	
Region III		Region VI-2		Region IX-2	
Region IV-1	AL	Region VII		Region X	
Region IV-2	MS				

= Available/Mission Capable
 = Assigned/Deployed
 = Available/Partially Mission Capable
 = Not Mission Capable

Urban Search & Rescue



INCIDENT SUPPORT TEAMS (Red-White-Blue) – Monthly On Call Rotation											
JAN	FEB	MAR	APR	MAY	JUN	JUL	AUG	SEP	OCT	NOV	DEC
WEST				CENTRAL				EAST			
Team	Status	Team	Status	Team	Status	Team	Status	Team	Status	Team	Status
CA-TF1	Available	AZ-TF1	Available	FL-TF1	Available	FL-TF1	Available	FL-TF2	Available	FL-TF2	Available
CA-TF2	Available	CO-TF1	Available	FL-TF2	Available	MA-TF1	Available	MA-TF1	Available	MA-TF1	Available
CA-TF3	Available	IN-TF1	Available	MD-TF1	Available	MD-TF1	Available	MD-TF1	Available	MD-TF1	Available
CA-TF4	Available	MO-TF1	Reconstituting	NY-TF1	Available	NY-TF1	Available	NY-TF1	Available	NY-TF1	Available
CA-TF5	Available	NE-TF1	Reconstituting	PA-TF1	Available	PA-TF1	Available	PA-TF1	Available	PA-TF1	Available
CA-TF6	Available	NM-TF1	Conditional	VA-TF1	Available	VA-TF1	Available	VA-TF1	Available	VA-TF1	Available
CA-TF7	Available	NV-TF1	Reconstituting	VA-TF2	Available	VA-TF2	Available	VA-TF2	Available	VA-TF2	Available
CA-TF8	Available	TN-TF1	Available	OH-TF1	Available	OH-TF1	Available	OH-TF1	Available	OH-TF1	Available
WA-TF1	Available	TX-TF1	Available								
		UT-TF1	Reconstituting								

= Available/Mission Capable
 = Available/Partially Mission Capable

= Assigned/Deployed
 = Out-of-Service

RRCC / Regional Watch Center Status



Region	RRCC	Regional Watch Center
I	Not Activated	Maynard MOC (24/7)
II	Not Activated	24/7
III	Not Activated	24/7
IV	Level III	24/7
V	Not Activated	(24/7)
VI	Level III	Denton MOC (24/7)
VII	Not Activated	24/7
VIII	Not Activated	Denver MOC (24/7)
IX	Not Activated	24/7
X	Not Activated	Bothell MOC (24/7)

■ = Not Mission Capable

■ = Available/Partially Mission Capable

■ = Available/Mission Capable

National Team Status



Team/Status	Current Location	Remarks
National Watch Center	Washington, DC	Enhanced Watch (Night only)
NRCC	Washington, DC	Level III (Daytime only)
HLT	Miami, FL	Activated
DEST	Washington, DC	Not Activated
Mission Capable	Partially Mission Capable	Not Mission Capable



FEMA

FEMA's mission is to support our citizens and first responders to ensure that as a nation we work together to build, sustain, and improve our capability to prepare for, protect against, respond to, recover from, and mitigate all hazards.