



FEMA

Daily Operations Briefing

Sunday, September 15, 2013

8:30 a.m. EDT

Significant Activity: Sep 14 – 15



Significant Events:

- Colorado Flooding
- New Mexico & Navajo Nation Flooding

Tropical Activity:

- Atlantic – Hurricane Ingrid; Area 1 (High 70%)
- Eastern Pacific – Tropical Storm Manuel
- Central Pacific – No tropical cyclone activity expected through Tuesday morning
- Western Pacific – No activity affecting U.S. interests

Significant Weather:

- Flash flooding possible – Southern/Central Rockies & Plains
- Heavy rain possible – Southern tip of Texas
- Rain & thunderstorms - Pacific Northwest & Rockies to Plains & Middle Mississippi Valley
- Critical Fire Weather Areas: None; Red Flag Warnings: CA & OR
- Space Weather: No space weather storms observed/predicted

Earthquake Activity: No significant activity

Declaration Activity:

- Expedited Major Disaster Declaration approved for Colorado

Colorado – Flash Flooding



Situation:

- ▲ Widespread heavy rainfall expected through tonight, decreasing Monday; Flash Flood Watches in effect

Impacts:

- ▲ 4 confirmed fatalities; 1 confirmed injury statewide ; 472 missing in Boulder County
- ▲ 26 shelters open with 1,250 occupants; 13,500+ residents evacuated statewide
- ▲ 19,258 homes, 1,697 commercial, 2,000 other minor structures threatened
- ▲ 2,694 homes, 509 commercial damaged; 1,502 homes, 25 commercial, 4,705 other minor structures destroyed

Infrastructure/Utilities as of 2:00 am EDT:

- ▲ 5,652 (peak 16K) customers without power statewide (*industry sources*); 3,580 without natural gas in Boulder County
 - Several water treatment plants compromised; boil water orders in effect for numerous counties
- ▲ 1 of 2 waste water treatment plants in Boulder now operational; assessments ongoing
- ▲ Over 100 road closures reported by Colorado DOT; some Amtrak service cancelled
 - FAA issued temporary flight restrictions (TFR) in Boulder County to allow search & rescue operations

Isolated Communities

- ▲ Cities of Jamestown, Gold Hill and Lyons remain cut off or limited access
- ▲ Evacuation of Lyons completed with 2,000 evacuees sheltered in Longmont; evacuation of Estes Park ongoing

Colorado – Flash Flooding



Response

Colorado

- CO EOC is at Level I; Governor declared a State of Emergency for flooding on Sep 12
- USAR CO-TF1 activated as Type III by the State; elements in Lyons & Longmont counties
- FEMA-4145 was approved Sep 14; EM-3365 was approved on Sep 12
- ▲ 330 CO NG activated & assisting with evacuations, safety & security operations

FEMA Region VIII

- RRCC is at Level II with select ESFs
- Region VIII IMAT & LNOs deployed to CO EOC & Larimer & El Paso county EOCs

FEMA Headquarters

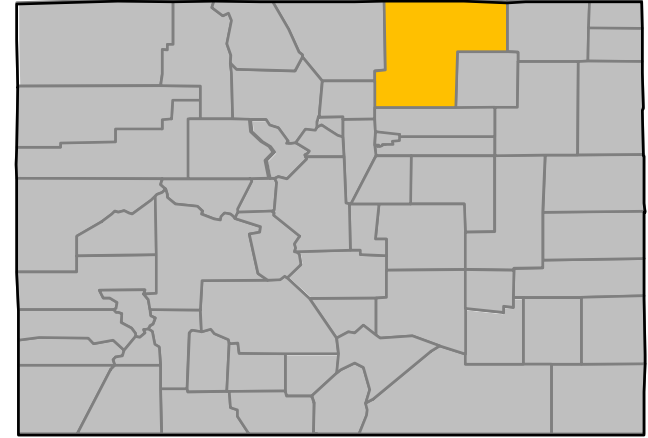
- ▲ NRCC at Level III (24/7 with ESFs 2, 3, 5, 6, 7, 9, 15 & LNOs for DoD, CAP, NGB, NWS, Salvation Army & ARC)
 - NWC at Watch/Steady State
 - National IMAT-West deployed to Region VIII RRCC
- ▲ A National Joint Information Center (JIC) has been established at FEMA HQ
- ▲ Urban Search & Rescue: White IST, UT-TF1, NE-TF1, NV-TF1 & MO-TF1 activated & deployed to Colorado
 - 10 MCOVs deployed from Denver, Bothell, & Denton
 - Logistics:
 - ISBs established at Denver Federal Center & Buckley AFB, CO
- ▲ 129,384 liters of water, 88,496 meals, 2,612 cots and 14,776 blankets have shipped
- ▲ 6 FEMA CORP Teams arrived in CO on Sept 14

Major Disaster Declaration – CO



FEMA-4145-DR-CO

- Expedited Major Disaster Declaration approved on September 14, 2013 for the State of Colorado
- For Severe Storms, Flooding, Landslides, & Mudslides beginning September 11, 2013 and continuing
- Approved:
 - Individual Assistance for Boulder County
 - Debris removal, emergency protective measures (Categories A & B), including direct federal assistance under the Public Assistance program, for Boulder County
 - Hazard Mitigation statewide
- Federal Coordinating Officer (FCO) is Michael J. Hall



 Declared County

New Mexico – Flash Flooding

Current Weather Situation:

- ▲ Showers & threat for flash flooding continues with through tonight

Impacts:

- ▲ Rio Grande/Pecos Rivers continue to reach levels not seen in decades - beneficial increases in water supply reservoirs
- ▲ Flooding is affecting most of the 33 counties
- ▲ One fatality attributed to flooding
 - Hundreds of evacuations took place
 - Many damaged roads, bridges & public infrastructure

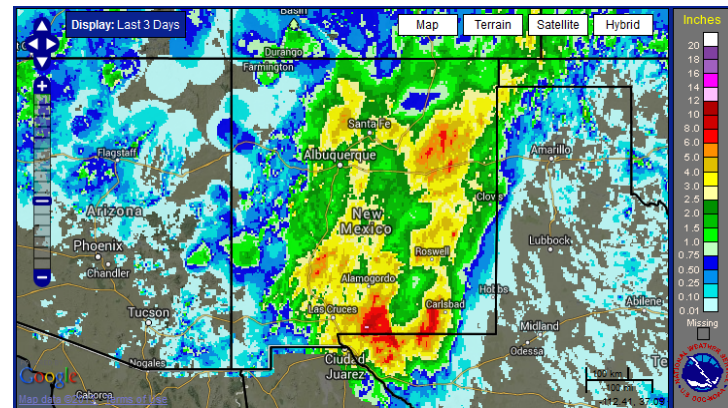
Response:

State/Local

- Governor declared State of Disaster on Sept 13
- New Mexico EOC is at Level III (Monitoring)

FEMA

- Region VI remains at Watch/Steady State
- No requests for FEMA assistance



Rainfall – Past 3 Days

Navajo Nation – Flash Flooding



Current Weather Situation:

- Showers & threat for flash flooding continues with through tonight
- Much of Navajo Nation received over 150% of normal precipitation

Impacts:

- 50 to 80 homes damaged
- 50 earthen dams breached resulting in massive erosion downstream
- Navajo Nation Chapters sustaining damages:
 - 21 Chapters in Arizona
 - 26 Chapters in New Mexico
 - 6 Chapters in Utah

Response:

- Navajo Nation declared a State of Emergency for over 50 communities across NM, AZ & UT
- Numerous Navajo Nation programs & non-tribal entities providing emergency protective measures

FEMA

- Region VIII RRCC at Level II
- Regions VI & IX remain at Watch/Steady State
- No requests for FEMA assistance

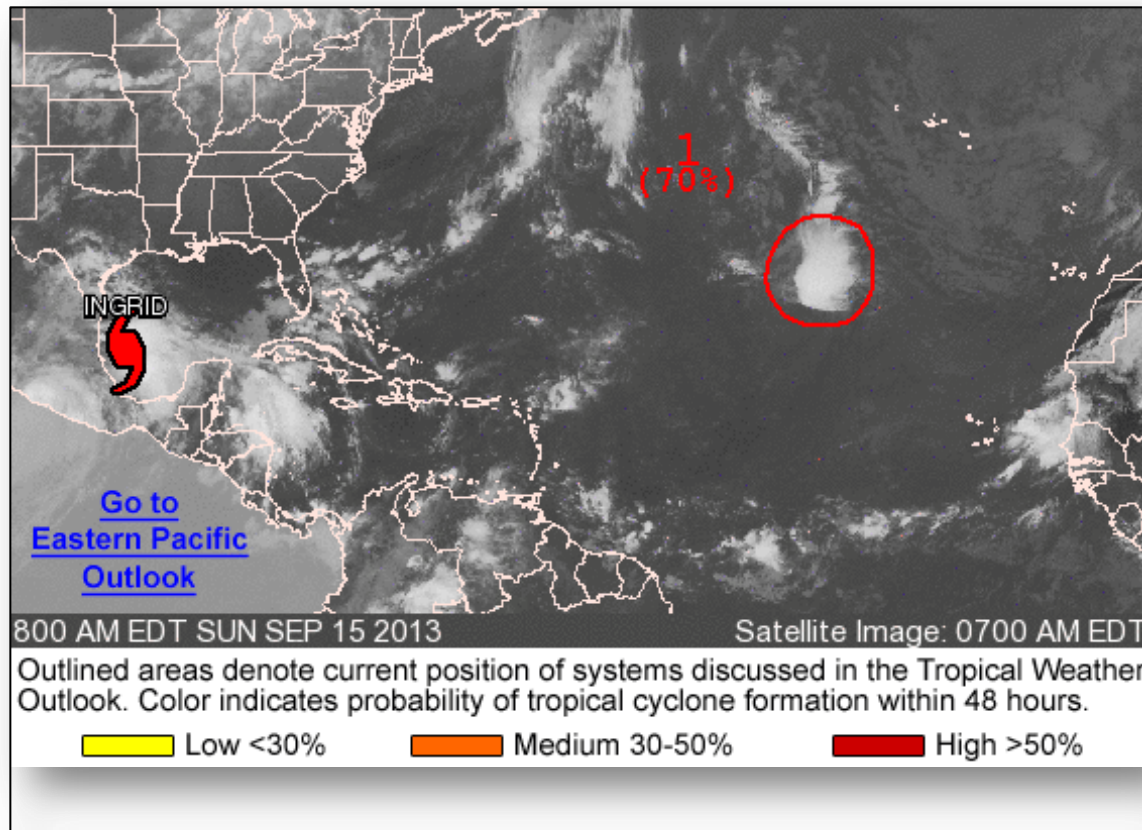


Source: University of Arizona, 2004

Atlantic – Tropical Outlook



FEMA

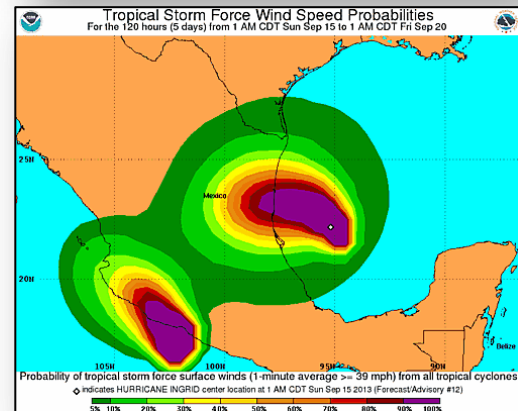
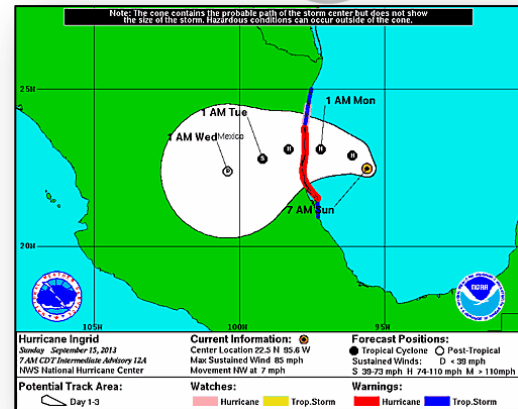


Atlantic – Hurricane Ingrid

As of 8:00 a.m. EDT

- Located 150 miles E of Tampico Mexico
- Moving NW at 7 mph
- Turn W expected by early Mon
- Should reach coast of Mexico within hurricane warning area by early Mon
- Maximum sustained winds 85 mph
- Some strengthening forecast before landfall
- Hurricane force winds extend 35 miles
- Tropical storm force winds extend 90 miles

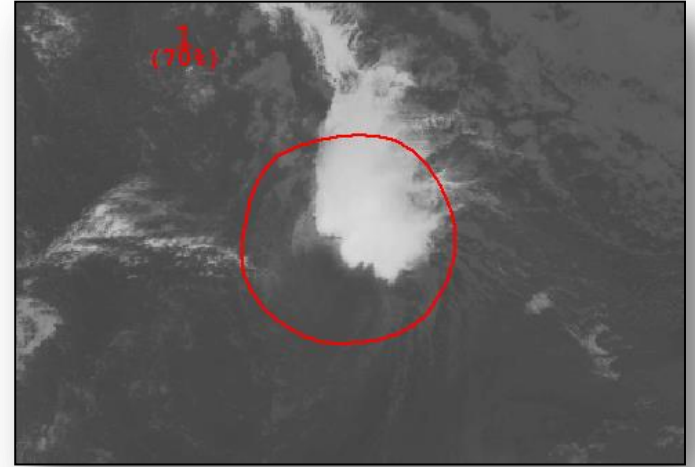
INGRID IS SECOND HURRICANE OF THE 2013 SEASON



Atlantic – Area 1

As of 8:00 a.m. EDT

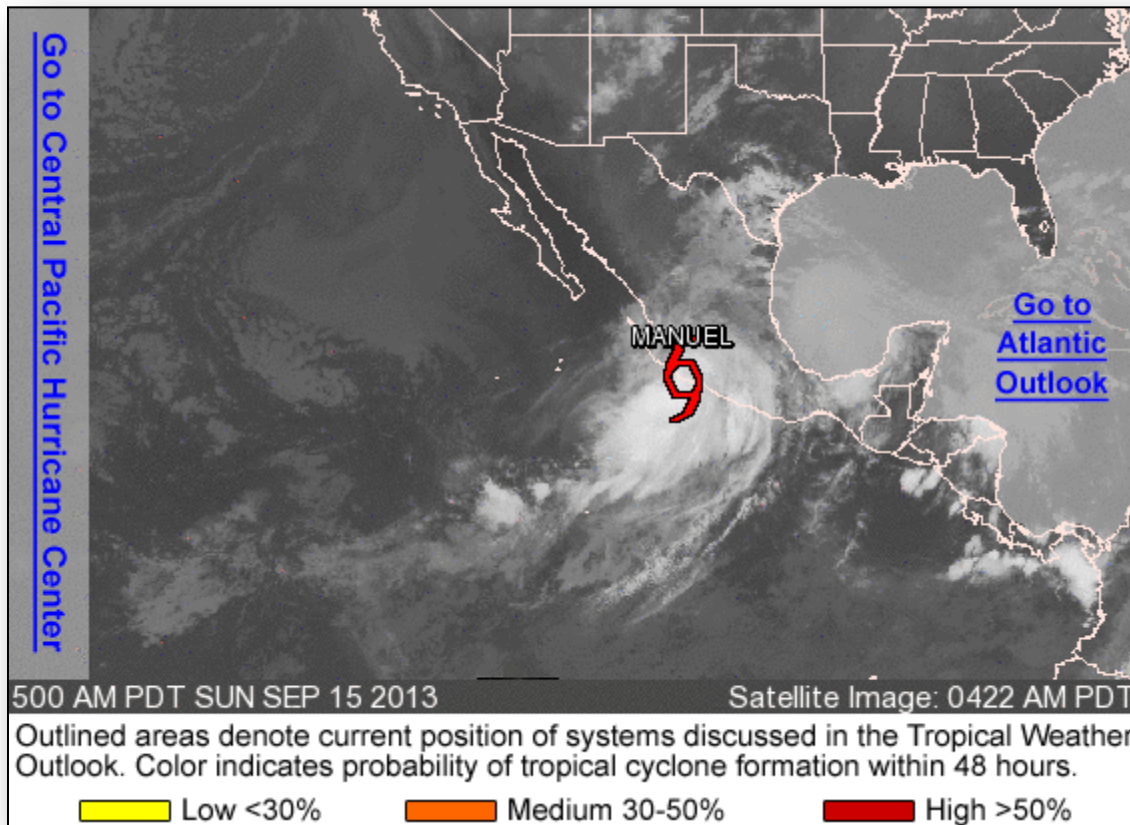
- Remnants of post-tropical cyclone Humberto located 950 miles SW of the Azores
- Moving WNW and then NW
- Redeveloped closer to the center
- Conditions forecast to become more favorable for regeneration next day or two
- Probability of tropical cyclone development:
 - Next 48 hours: High (70%)
 - Next 5 days: High (90%)



Eastern Pacific – Tropical Outlook



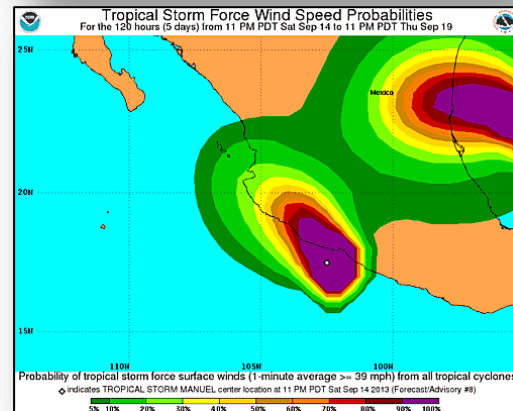
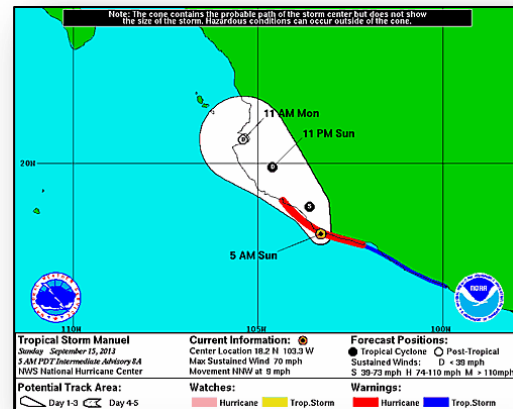
FEMA



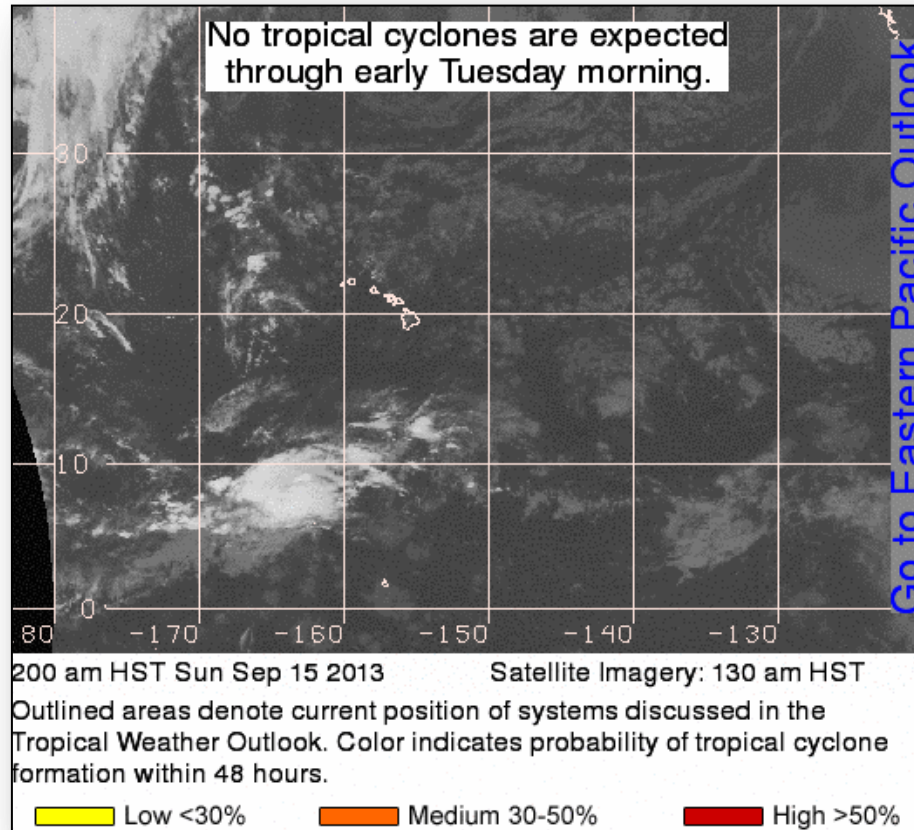
Eastern Pacific – Tropical Storm Manuel

As of 8:00 a.m. EDT

- Located 74 miles WNW of Lazaro Cardenas Mexico
- Moving NNW at 9 mph
- Turn NW expected later today and that motion should continue for next day or so
- Maximum sustained winds 70 mph
- Center is expected to move near SW coast of Mexico today
- Little change in strength is expected prior to landfall
- Tropical storm force winds extend 985 miles



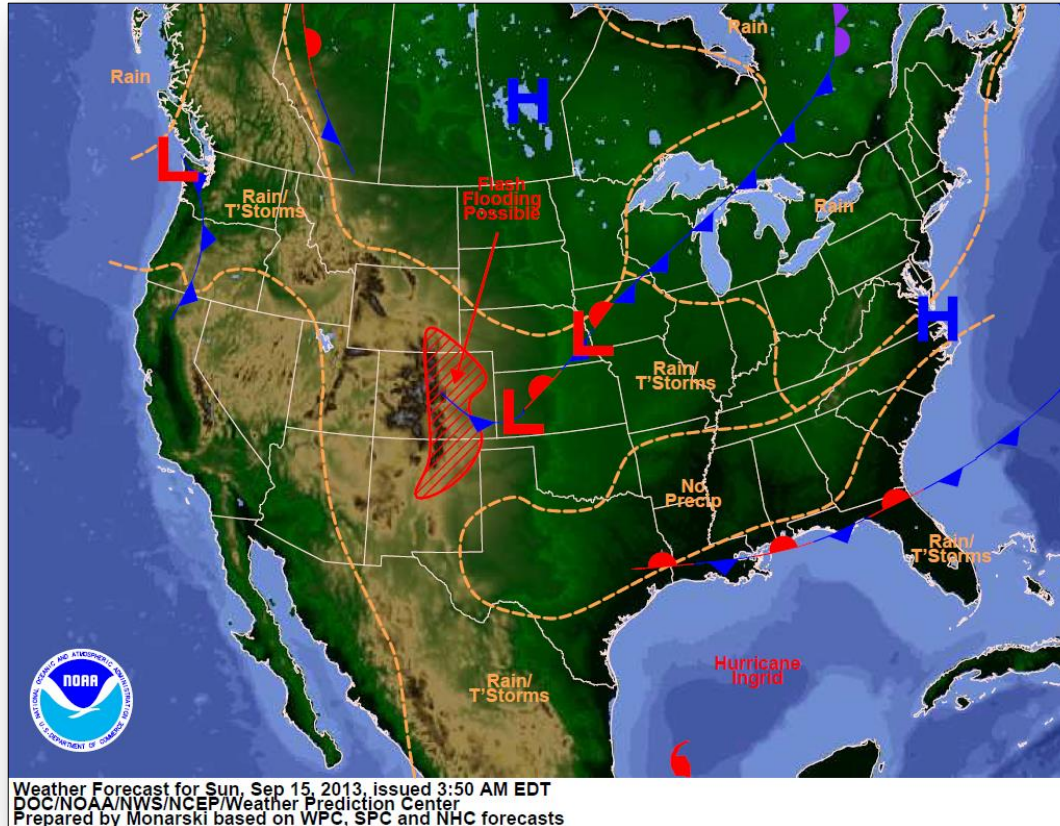
Central Pacific – Tropical Outlook



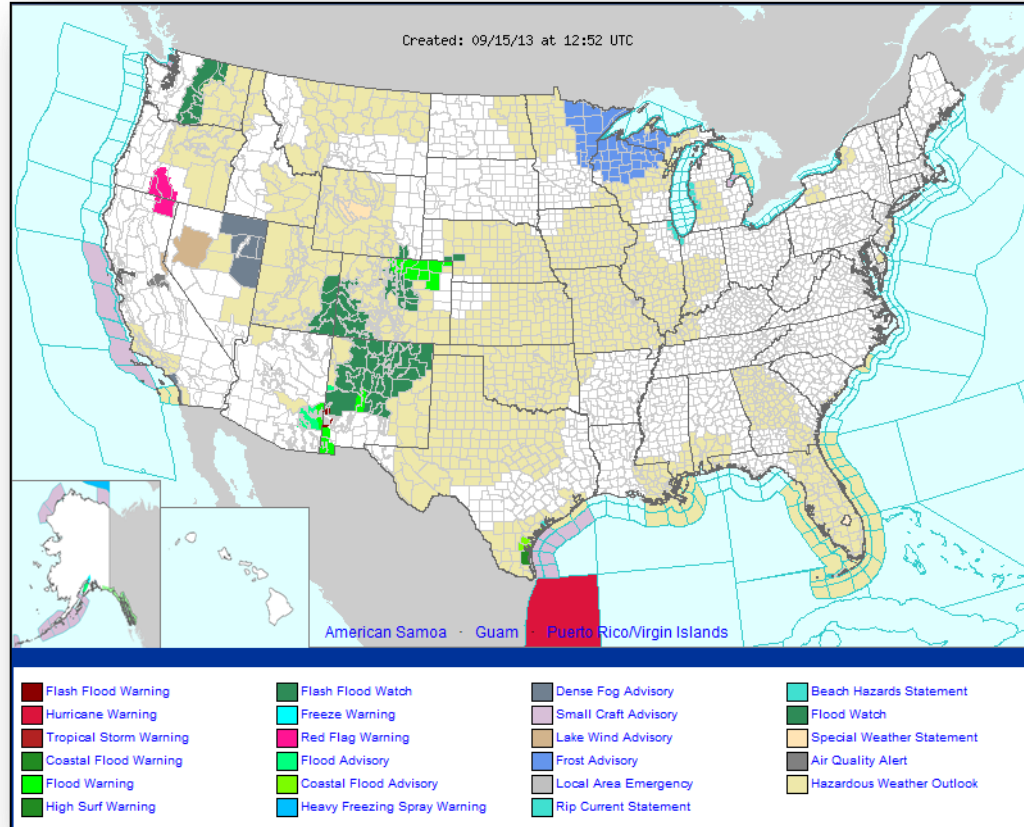
National Weather Forecast



FEMA



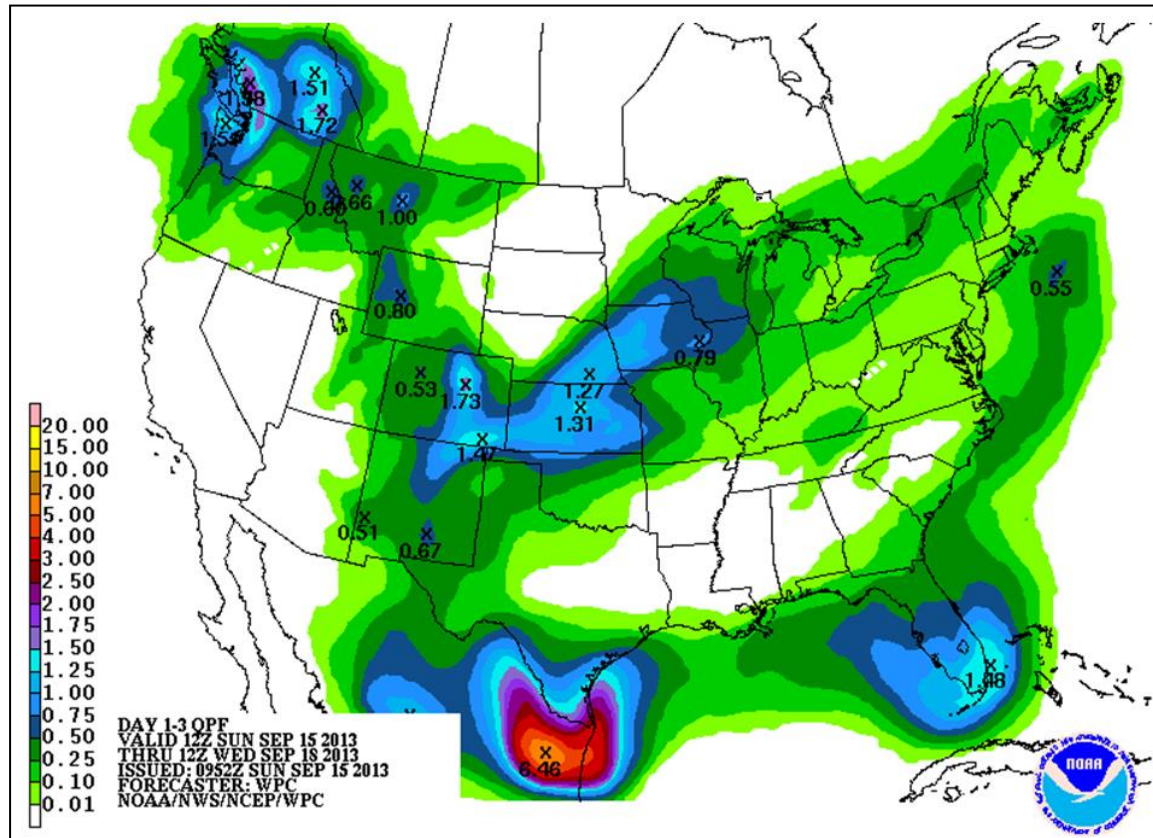
Active Watches/Warnings



Precipitation Forecast – 3 Day



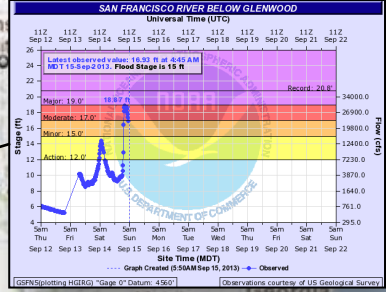
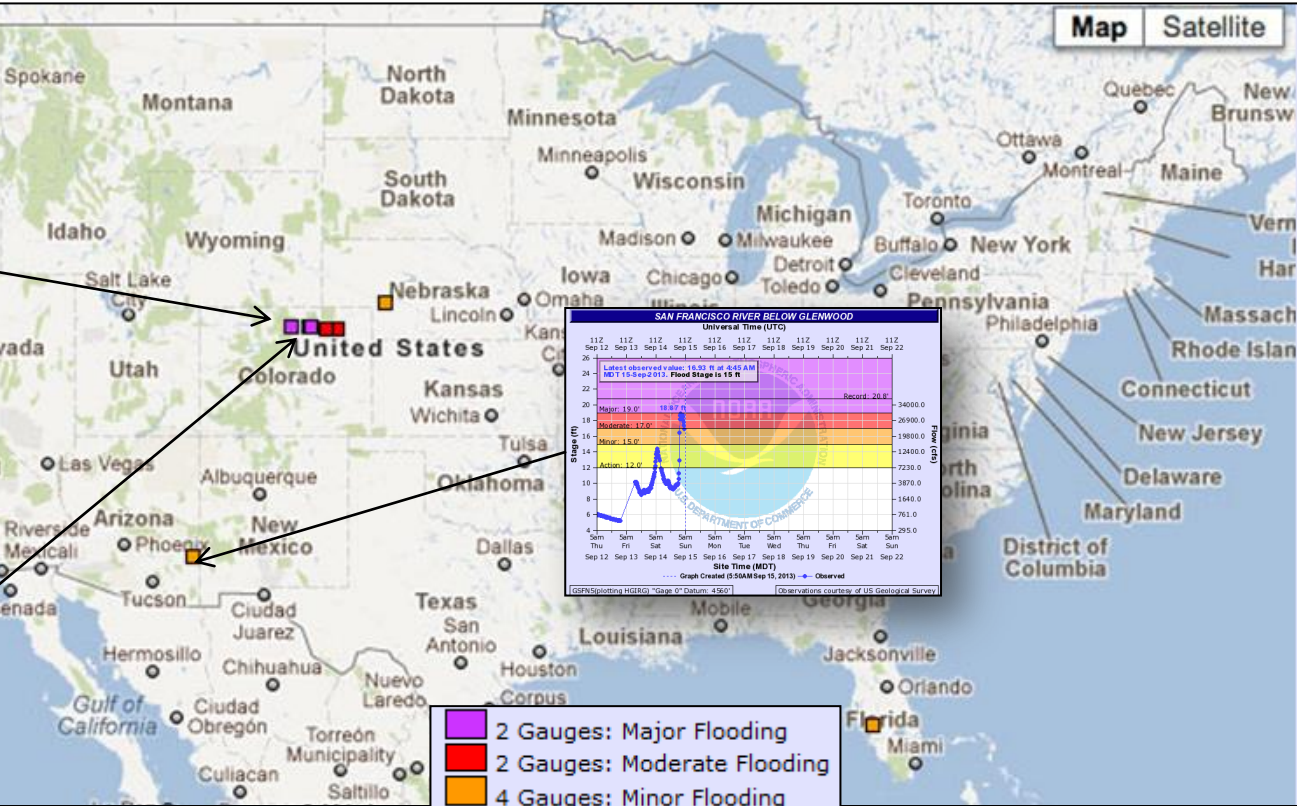
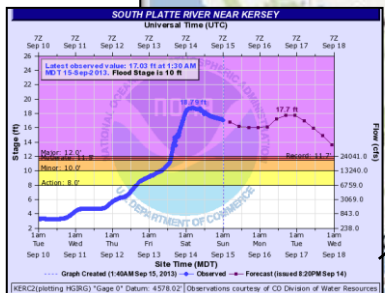
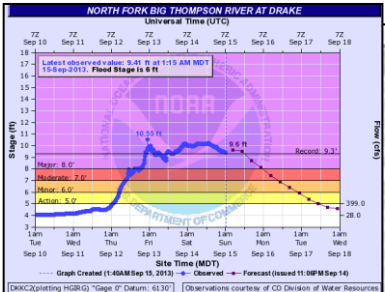
FEMA



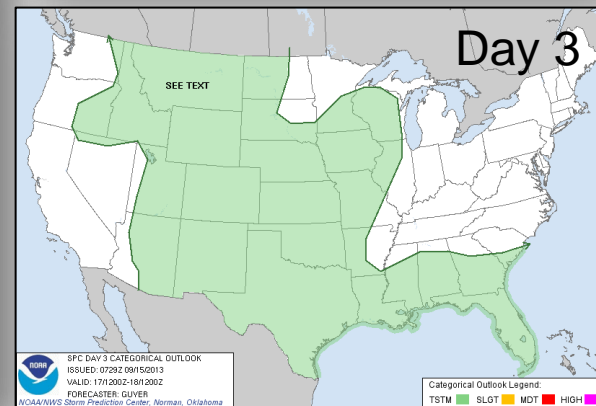
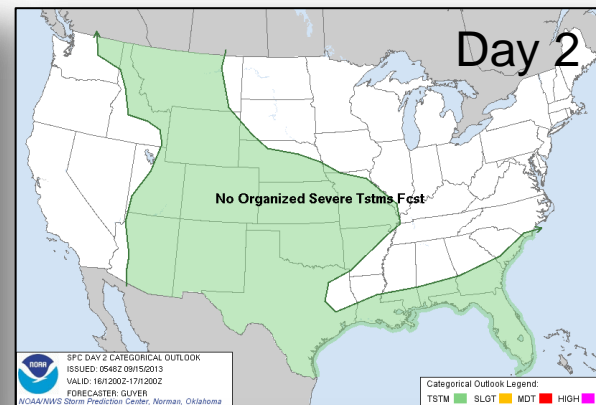
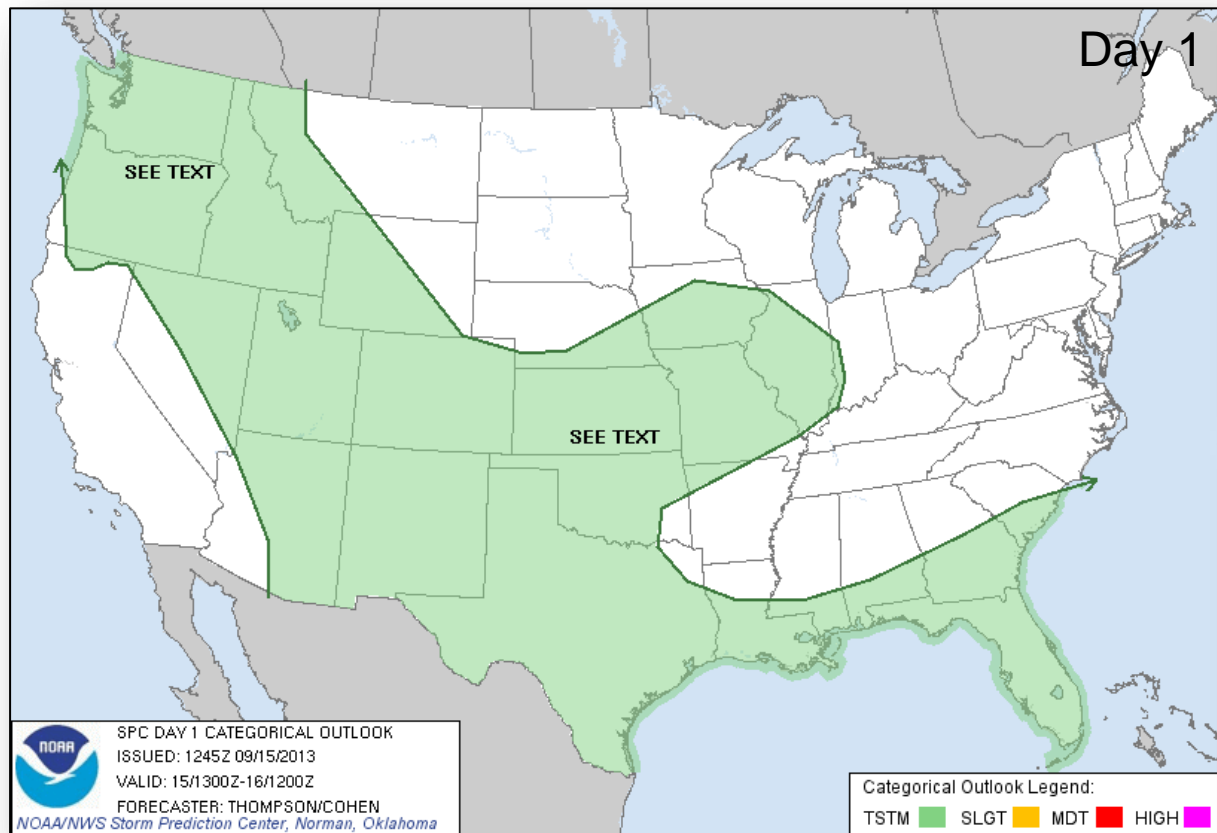


FEMA

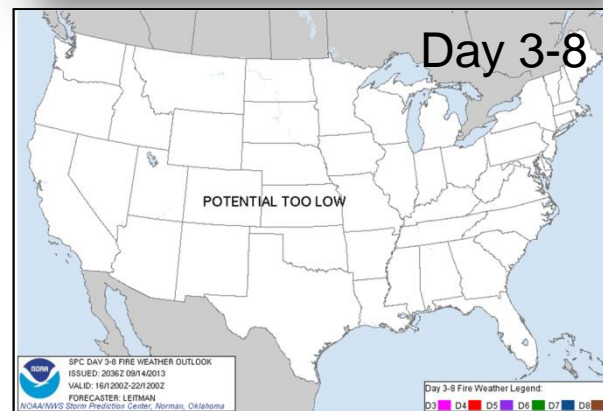
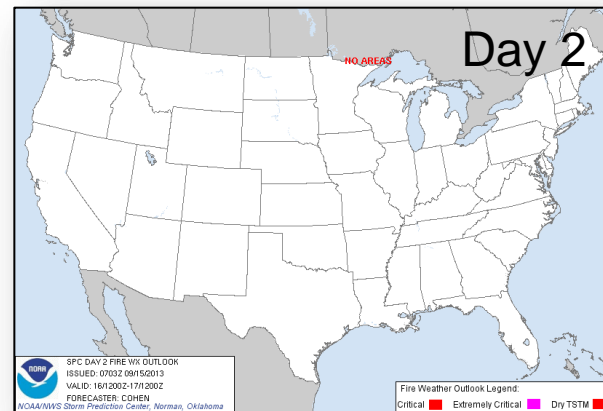
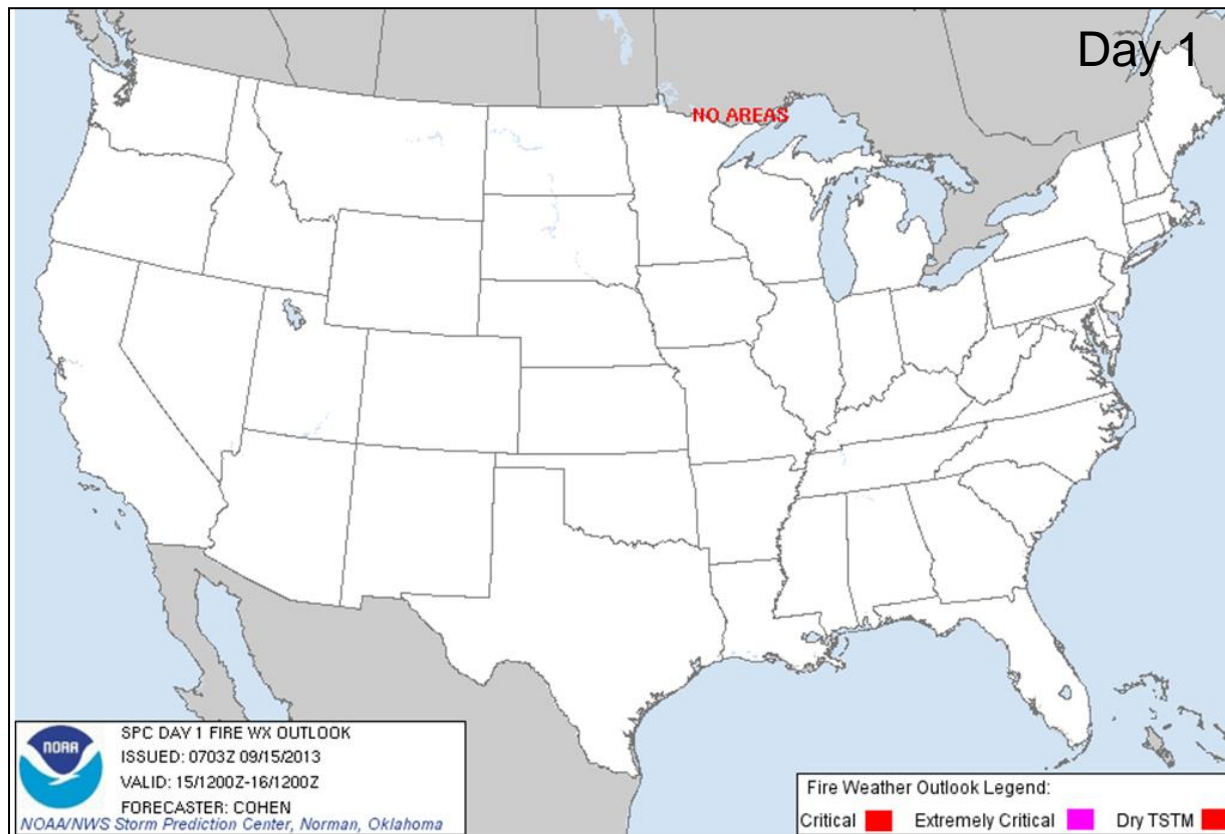
River Forecast – 7 Day



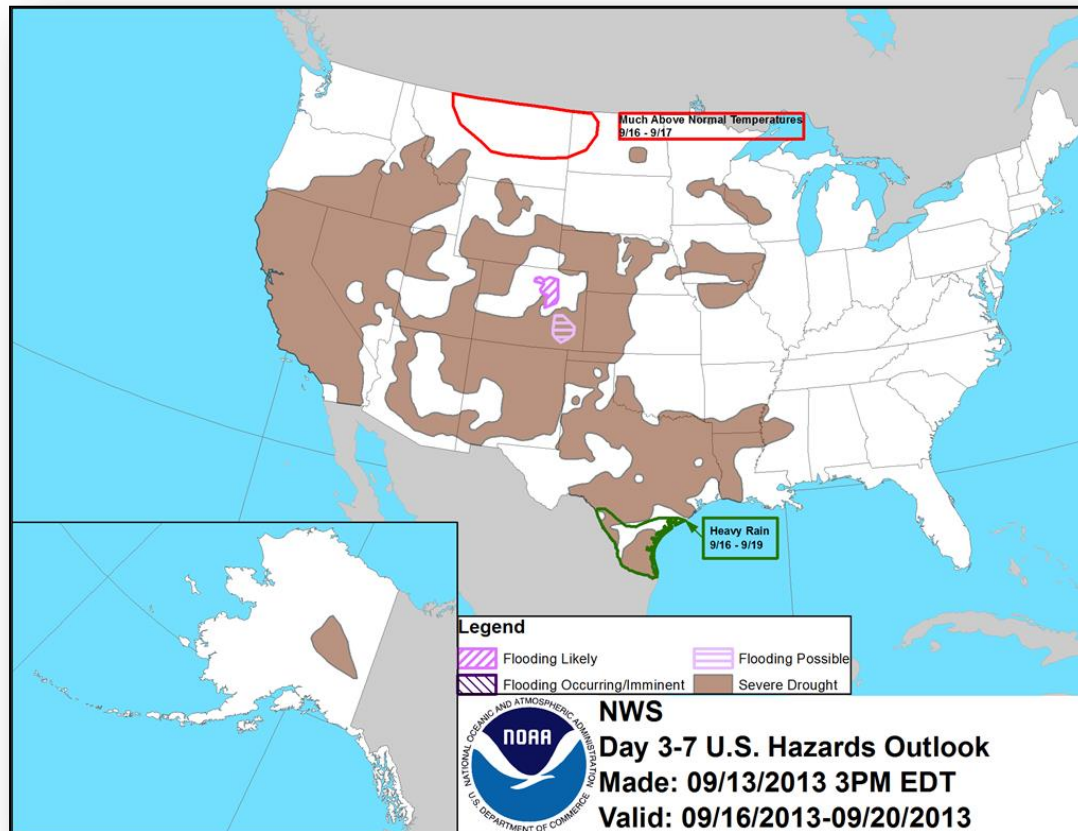
Convective Outlooks Days 1 – 3



Critical Fire Weather Areas Days 1 – 8



Hazard Outlook: September 16 – 20



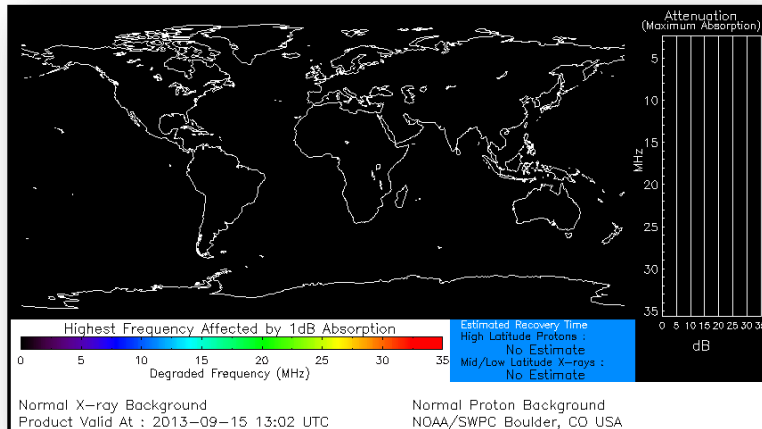
Space Weather



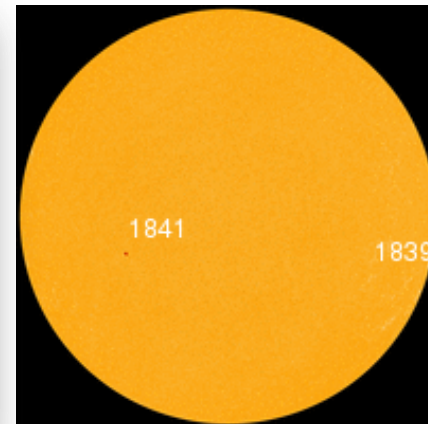
FEMA

NOAA Scales Activity (Range: 1/minor to 5/extreme)	Past 24 Hours	Current	Next 24 Hours
Space Weather Activity:	None	None	None
• Geomagnetic Storms	None	None	None
• Solar Radiation Storms	None	None	None
• Radio Blackouts	None	None	None

HF Communication Impact



Sunspot Activity

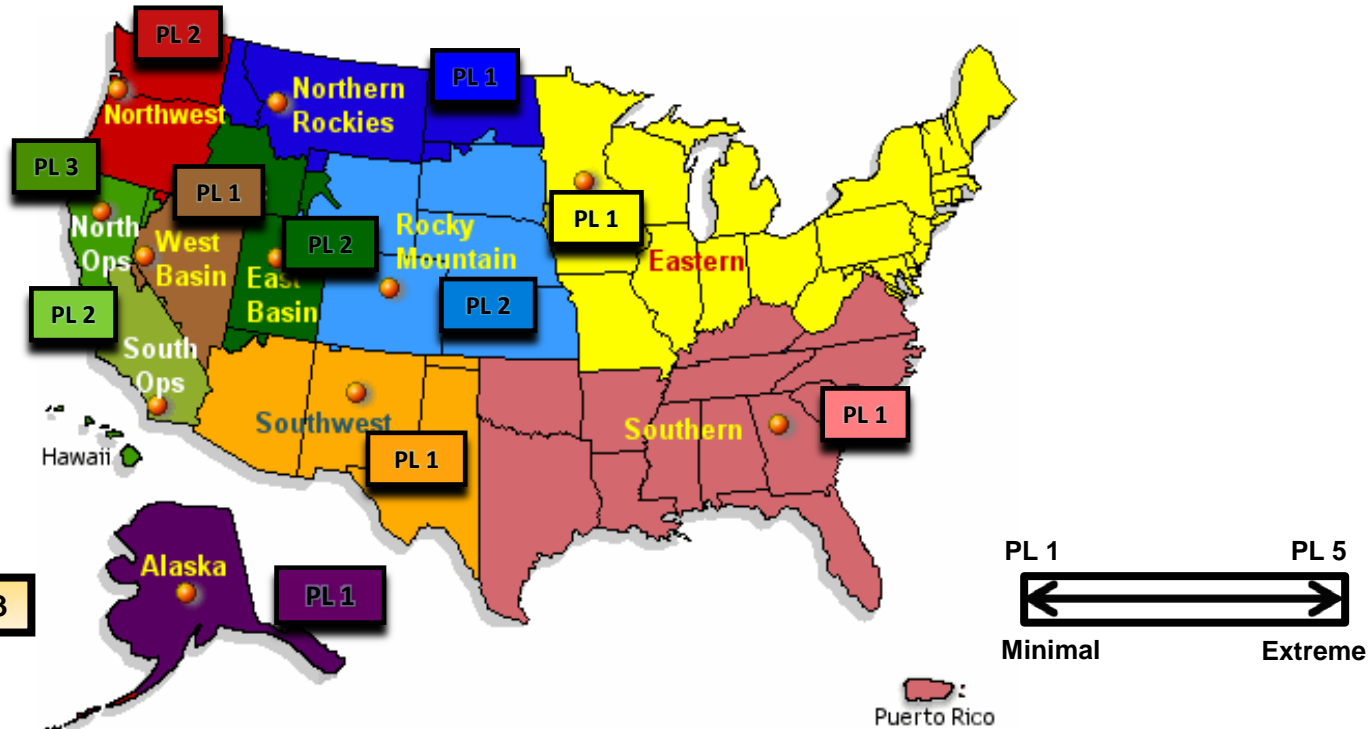


U.S. Wildland Fire Preparedness Levels



National Preparedness Level: 2

Minimal mobilization of resources from other Geographic Areas is occurring. There is moderate commitment of national resources with the potential to mobilize additional resources from other Geographic Areas.



As of September 15, 2013

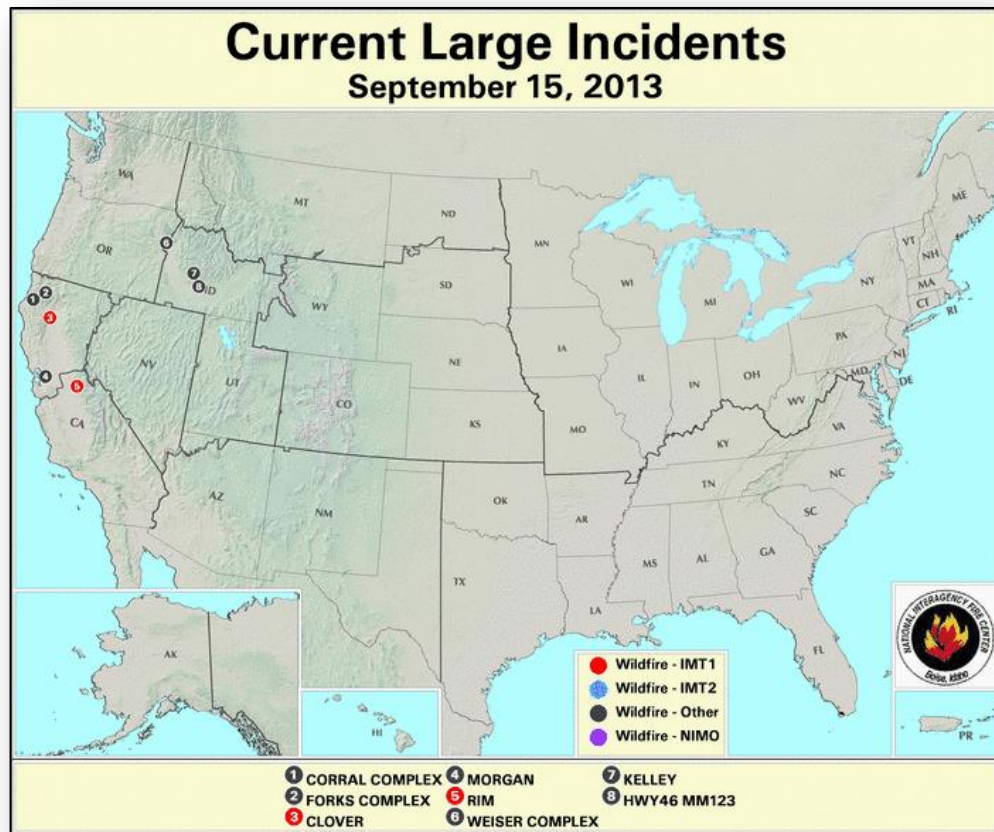
National Fire Activity

September 15, 2013

- National Preparedness Level: 2
- Initial Attack Activity: Light (78 new fires)
- New Large Fires: 0
- Large Fires Contained: 3
- Uncontained Large Fires: 5
- *NIMOs Committed: 0 of 4
- National Teams Committed:
 - Area Command Teams: 0 of 2
 - Type-1 **IMT(s): 2 of 16
 - Type-2 IMT(s): 2 of 35
- Affected States: CA & ID

* National Incident Management Organization

** Incident Management Team



FMAG Requests and Declarations



Action (since last report)			Total	FMAG No. and State	
Requests DENIED			0		
Requests APPROVED			0		
Approved FMAG Data					
Year	Current YTD	MTD	Monthly Average	Cumulative Acres Burned YTD	Cumulative Denied FMAGs YTD
2013	29	1	11	374,417	8
Year	Total Previous FY	++ Yearly Average		Total Acres Burned Previous Year	Total Denied FMAGs Previous Year
2012	47	61		580,716	17
* Reflects the 3-year average for current month/ ** Reflects 3-year total average					

Disaster Amendments



Amendment	Effective Date	Action
Amendment No. 1 FEMA-3365-EM-CO	September 14, 2013	Appoints Michael J. Hall as FCO

Disaster Requests & Declarations



Declaration Requests in Process		Requests APPROVED (since last report)	Requests DENIED (since last report)
3	Date Requested	1	0
PA – DR (Appeal) Severe Storms, Straight-line Winds, Tornadoes, Flooding & Mudslides	September 6, 2013		
Rosebud Sioux Tribe – DR Severe Storms, Straight-line Winds & Flooding	September 10, 2013		
NC – DR Severe Storms, Flooding, Landslides & Mudslides	September 12, 2013		
CO – Expedited DR Severe Storms, Flooding, Landslides & Mudslides	September 14, 2013	Declared September 14, 2013	

Joint Preliminary Damage Assessments

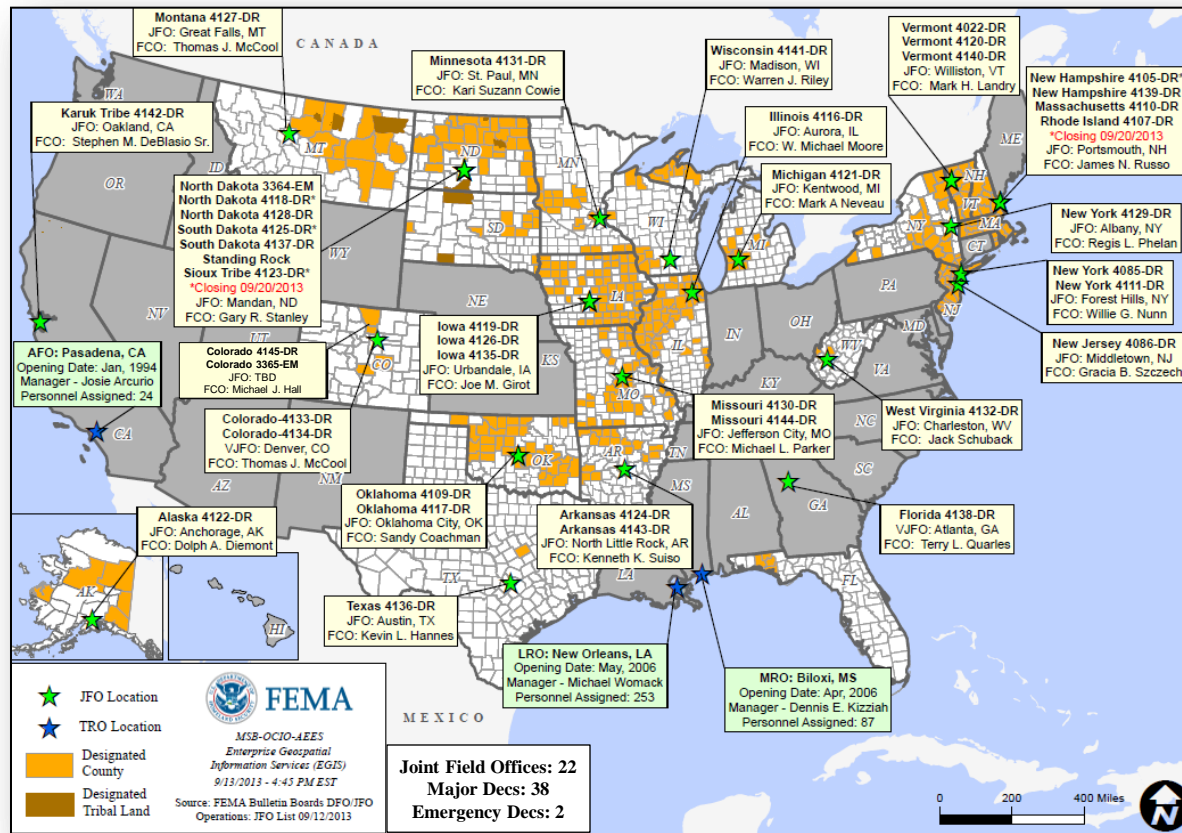


Region	State / Location	Event	IA/PA	Number of Counties		Start – End
				Requested	Complete	
VII	KS	Severe Storms, Flooding & High Winds Jul 22 - Aug 16, 2013 & continuing	PA	64	63	8/21 – 9/19

Open Field Offices as of September 15, 2013



FEMA



OFDC Cadre Member Status



Federal Coordinating Officer

Deployed	Detailed	Available	Not Available	Total
28	2	9	2	41
Total Available	Type 1	Type 2	Type 3	Type 4
10*	1	5	2	2

* All Type 1 FCOs are available unless deployed to a Level 1 event

Federal Disaster Recovery Coordinator

Deployed	Available	Pending Hire	On Board	Positions
8	1	1	9	10

As of: 09/13/2013

MCOV Fleet / Deployment Status



MCOV FLEET STATUS						MCOV DISASTER SUPPORT DEPLOYMENTS					
Location	Units Assigned	Available FMC	Deployed Committed	PMC	Unavailable	DR-State	OPCON	En Route	Unit Prep	Open Request	Notes:
MERS Maynard	3	2			1	EM-3365		4	6		6 Pending Operator Deployment
MERS Frederick	8	8									
MERS Thomasville	14	14									
DC Ft Worth	20	11	8		1						
MERS Denver	2	0	2								
MERS Bothell	4	3			1						
Sacramento	4	3			1						
TOTAL	55	41	10	0	4	TOTAL	0	4	6	0	
Included in above totals, units in route for turn-in.											

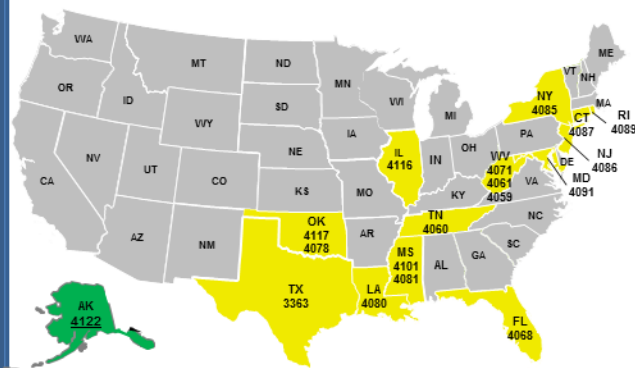
Fully Mission Capable	51
Partially Mission Capable	0
Non-Mission Capable	4
Total Not Deployed	45

Data as of: 09/15/13 @ 0300

Active IA Disasters - Referral Status & Awards



Active IA Disasters

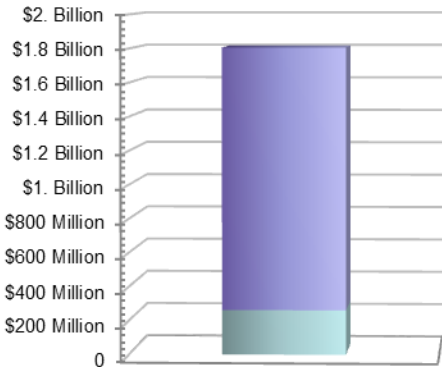


- # of DRs**
- 1** Open Registration Period
(60 days from Declaration, unless extended)
 - 17** IHP Active – IHP Assistance period remains open
(18 Months from Declaration)

Legend

Total IHP Awards

Total Awards:
311,449
Total Max Grants:
7,493

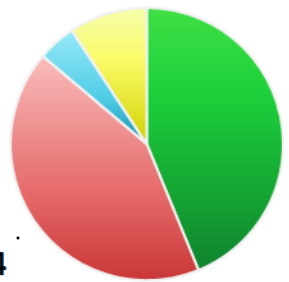


Other Needs Assistance \$262,762,187
Housing Assistance \$1,543,264,963
Total Awards Amount: **\$1,806,027,150**

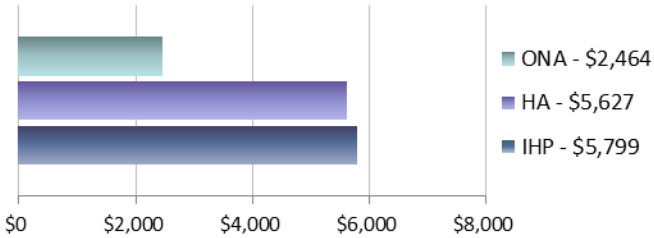
IHP Referral Status

- Approved - 311,449
- Ineligible - 301,165
- Withdrawn - 32,235
- Pending (FEMA) - 131
- Pending (Applicant) - 65,874

Total Referrals - 710,854



Average IHP Awards



18 Total IHP Active Disasters (All information on this slide reflects data for these disasters)

Max Grants = Applicants awarded maximum IHP (\$31,900 as of FY 2013)

Data as of: 09/12/13 @ 1500

IA Registration Statistics



IA Registrations and IHP Amounts as of September 12, 2013 @ 1500

DR/EM # - State	Registrations	Approved Applicants	Total HA Approved	Total ONA Approved	Total IHP Approved
4122 - AK	366	266	\$1,246,520	\$1,647,721	\$2,894,242
Totals	366	266	1,246,520	1,647,721	2,894,242
24 hour change	0	0	\$0	+\$19,500	+\$19,500

NPSC Call Data for September 11, 2013

Total Calls Answered (Help Line + Registration Intake)	2,189
Average time to answer call	12 seconds
Maximum / Minimum time to answer a call	37 seconds / 8 seconds

Housing Inspection Statistics



Inspection Data as of September 12, 2013 @ 1500

DR #-State	Inspectors	Inspections Assigned	Inspections Completed	Inspection % Complete	Turnaround Time (Days)
4122 – AK	1	404	384	95.05%	3.7
TOTAL	1	404	384	95.05%	3.7
24 hour change	0	+1	0	-0.24%	0.0


FEMA Workforce Status Report



Workforce Type	Total	Available To Deploy	Deployed	Committed To Other Activities or Exempt from Deployment	Operational Readiness
Reservist	6,345	3,988 (63%)	1,810 (29%)	547 (8%)	Mission Capable
Cadre of On-Call Response Employees (CORE)	2,656	1,049 (40%)	1,607 (60%)	0 (0%)	Mission Capable
Permanent Full Time (PFT)	5,056	2,018 (40%)	482 (10%)	*2,556 (50%)	Mission Capable
FEMA Corps	302	0 (0%)	145 (48%)	157 (52%)	Mission Capable
DHS Surge Capacity Force	3,969	1,778 (44%)	0 (0%)	** 2,191 (56%)	Awaiting DHS/FEMA Activation
Workforce Totals	18,328	8,833 (48%)	4,044 (23%)	5,451 (29%)	

 = <70% Deployed/Mission Capable

 = 70% - 79% Deployed/Partially Mission Capable

 = >80% Deployed

 = >80% Committed to Other Activities- Awaiting DHS/FEMA Activation

*This number will continue to be refined as Directorates/Regions identify and solidify the number of personnel required to support "mission critical home station", and Emergency Relocation Group personnel

**Deployable based on FEMA's need for DHS activation

Employees may be committed to other activities or exempt from deployment based on: leave status, training, travel related issues, or personnel status as ERG or mission critical home station employee

Data as of 9/12/13

IMAT Status



National Teams					
Team	Status	Team	Status	Team	Status
Blue/White		East		West	CO
Regional Teams					
Team	Status	Team	Status	Team	Status
Region I		Region V		Region VIII	CO
Region II		Region VI-1		Region IX-1	
Region III		Region VI-2		Region IX-2	Karuk Tribe
Region IV-1		Region VII	KS	Region X	
Region IV-2		*SRST – Standing Rock Sioux Tribe			

= Available/Mission Capable
 = Available/Partially Mission Capable

= Assigned/Deployed
 = Not Mission Capable

Urban Search & Rescue



INCIDENT SUPPORT TEAMS (Red-White-Blue) – Monthly On Call Rotation											
JAN	FEB	MAR	APR	MAY	JUN	JUL	AUG	SEP	OCT	NOV	DEC
WEST				CENTRAL				EAST			
Team	Status			Team	Status			Team	Status		
CA-TF1	Available			AZ-TF1	Available			FL-TF1	Available		
CA-TF2	Available			CO-TF1	State Activated			FL-TF2	Available		
CA-TF3	Available			IN-TF1	Available			MA-TF1	Available		
CA-TF4	Available			MO-TF1	Activated			MD-TF1	Available		
CA-TF5	Available			NE-TF1	Activated			NY-TF1	Available		
CA-TF6	Available			NM-TF1	Non-operational			PA-TF1	Available		
CA-TF7	Available			NV-TF1	Activated			VA-TF1	Available		
CA-TF8	Available			TN-TF1	Available			VA-TF2	Available		
WA-TF1	Available			TX-TF1	Available			OH-TF1	Available		
				UT-TF1	Activated						

= Available/Mission Capable
 = Available/Partially Mission Capable

= Assigned/Deployed
 = Out-of-Service

RRCC / Regional Watch Center Status



Region	RRCC	Regional Watch Center
I	Watch/Steady State	Maynard MOC (24/7)
II	Watch/Steady State	24/7
III	Watch/Steady State	24/7
IV	Watch/Steady State	24/7
V	Watch/Steady State	24/7
VI	Watch/Steady State	Denton MOC (24/7)
VII	Watch/Steady State	24/7
VIII	Level II	Denver MOC (24/7)
IX	Watch/Steady State	24/7
X	Watch/Steady State	Bothell MOC (24/7)

National Team Status



Team/Status	Current Location	Remarks
National Watch Center	Washington, DC	Watch/Steady State
NRCC	Washington, DC	Level III
HLT	Miami, FL	Activated
DEST	Washington, DC	Not Activated
Mission Capable	Partially Mission Capable	Not Mission Capable



FEMA

FEMA's mission is to support our citizens and first responders to ensure that as a nation we work together to build, sustain, and improve our capability to prepare for, protect against, respond to, recover from, and mitigate all hazards.