



FEMA

Daily Operations Briefing

Monday, July 8, 2013

As of 8:30 a.m. EDT

Significant Activity: July 5-8



Significant Events:

- Plane crash - San Francisco
- International train derailment – Canada
- Wildfires – CO, AZ, NV, AK

Tropical Activity:

- Atlantic – Tropical Storm Chantel
- Eastern Pacific – Tropical Storm Erick
- Central Pacific – No tropical cyclones expected through Tuesday afternoon
- Western Pacific – No activity threatening U.S. territories Tropical Storm 07W (Soulik)

Significant Weather:

- Severe thunderstorms – portions of the Northern & Central Plains
- Rain & thunderstorms – Mid-Atlantic; Southeast & Pacific Coast
- Critical Fire Weather Areas: none Red Flag Warnings: none
- Space Weather: No space weather observed past 24hrs; Next 24hrs minor/R1 radio blackouts likely

Earthquake Activity: M7.2 & after shocks - Papua New Guinea, Western Pacific Ocean; no tsunami

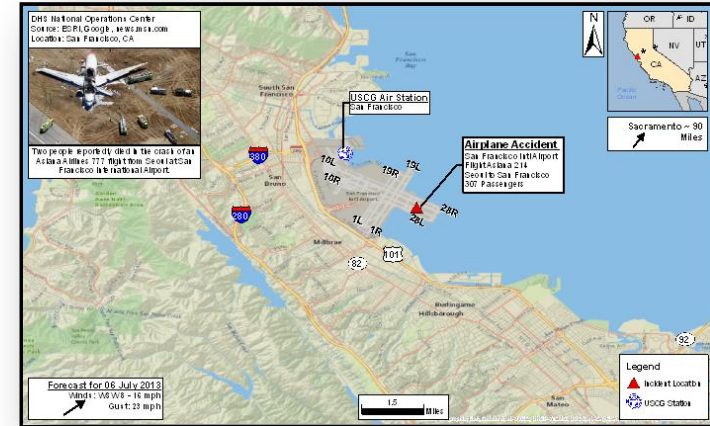
Declaration Activity: FMAG-NV-approved

Plane crash - San Francisco Airport - FINAL



July 6 at 2:25 p.m. EDT

- Asiana Flight 214 (Boeing 777) crash-landed at San Francisco International Airport (SFO)
- FLT originated from Incheon Airport in Seoul, South Korea
- 291 passengers & 16 crew members (total 307) were on board
- 2 fatalities, 181 injuries (49 critical/132 triage) & 1 unaccounted for
- USCG Air Station San Francisco established a triage site; conducted Medevac



- ▲ Three runways open; delays continue
- Flights continue to be diverted to nearby airports in Oakland, Sacramento, San Jose, & Los Angeles
- Federal Bureau of Investigation (FBI) & National Transportation Safety Board (NTSB) investigation
- California EOC remains at Normal Operations
- FEMA Region IX remains at Watch/Steady State
- No requests for FEMA assistance

Train Derailment-Lac-Megantic, (Canada) - FINAL

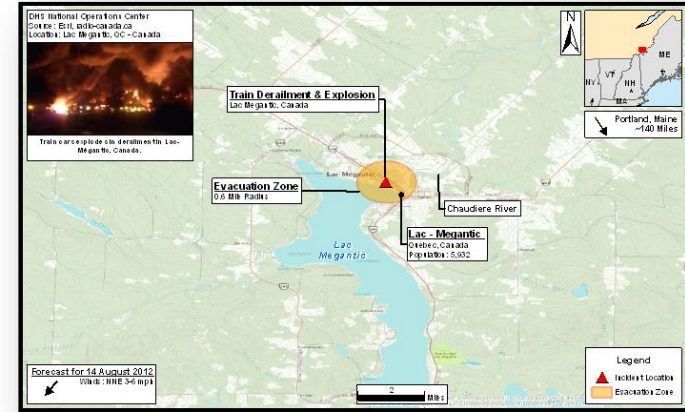


July 6 at 1:16 a.m. EDT

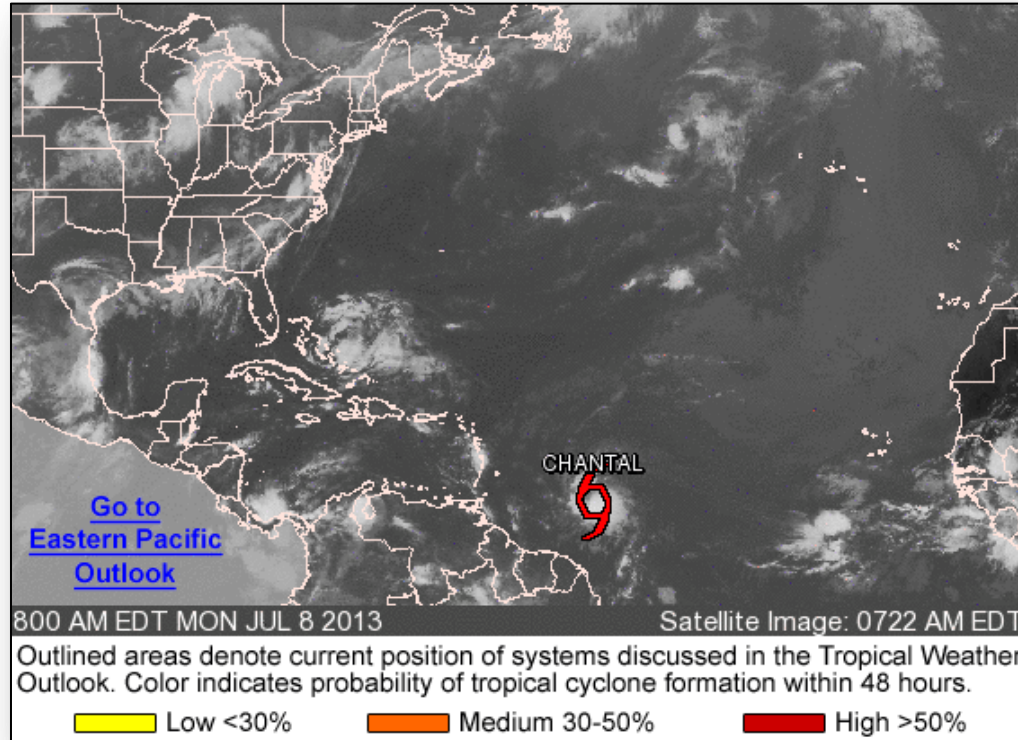
- 80-railcar train transporting crude oil derailed 11 miles from the border with Maine
- 4-5 rail cars exploded, causing subsequent fire
- 30 buildings destroyed in Lac-Megantic, Quebec (pop 6,000)
 - Approx. 500 residences evacuated due to fire
 - 2,000 people evacuated due to toxic air quality
- ▲ Five fatalities & unknown injuries (*DOT*)
- ▲ At least 40 people remain missing (*open media sources*)
- ▲ The fire is out after 18 hours (*open media sources*)

Response:

- Canada requested & received 20-30 firefighters & 10 vehicles from 7 towns in Maine through Mutual Aid Assistance
- Canadian Mobile laboratory monitoring air quality
- Flight restrictions in effect through today at 9:00 a.m. EDT (*DOT/FAA*)
- Maine EOC remains at Normal Operations
- FEMA Region I remains at Watch Steady State
- No unmet needs or requests for FEMA assistance



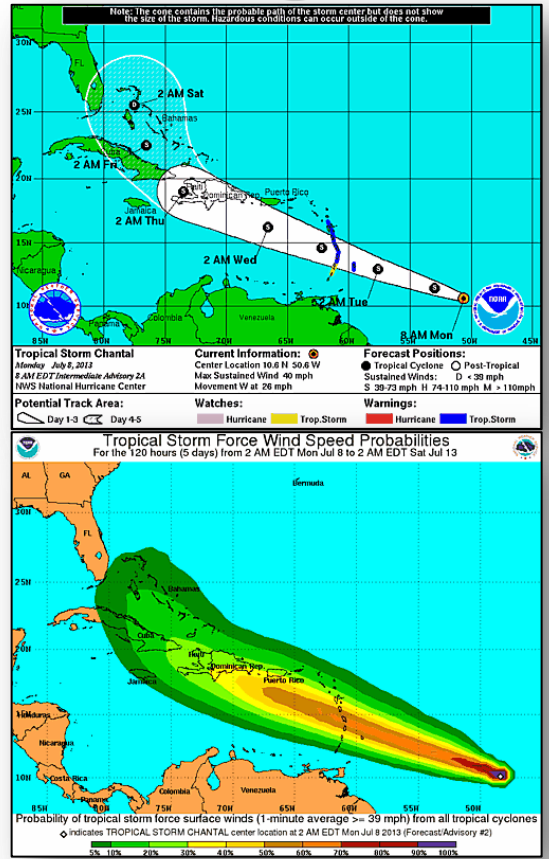
Atlantic – Tropical Outlook



Atlantic – Tropical Storm Chantal

As of 8:00 a.m. EDT

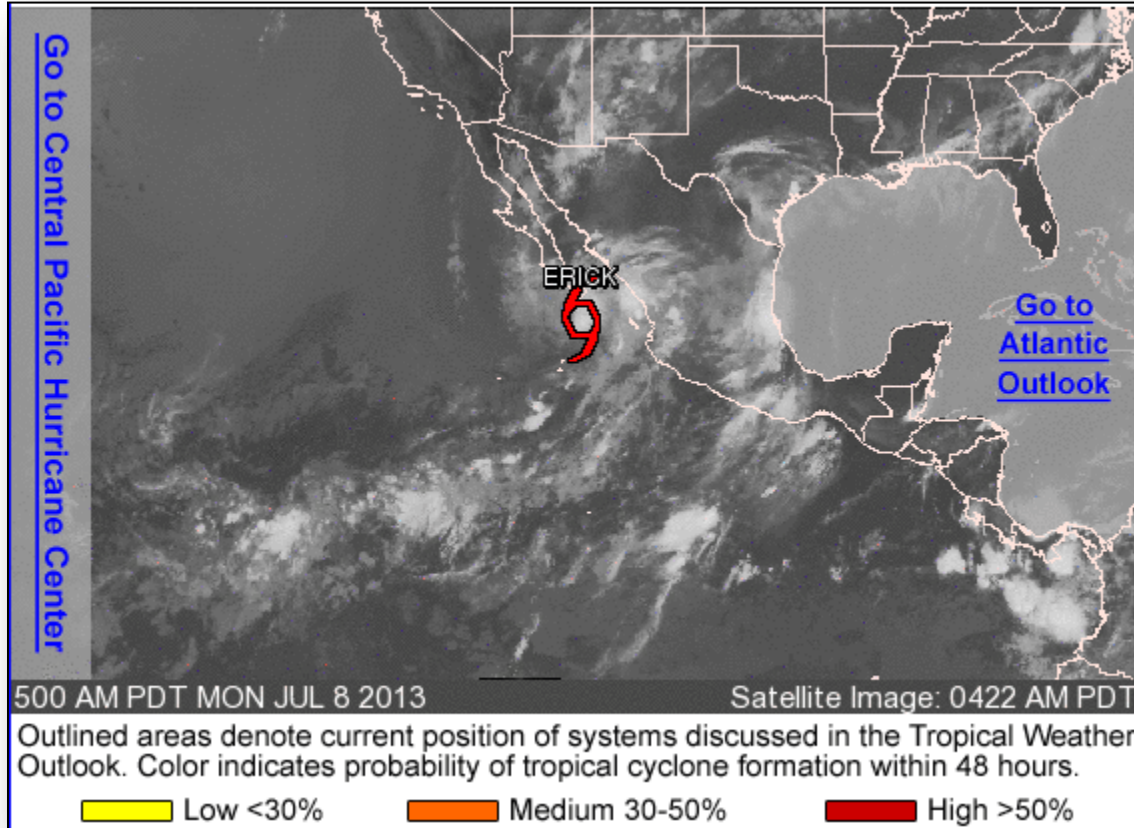
- 630 miles ESE of Barbados
- Moving W at 26 mph
- Max sustained winds at 40 mph, with higher gusts
- WNW motion expected next couple of days
- Some strengthening is forecast during the next 48 hours
- Tropical storm-force winds extend outward to 60 miles
- Move into the eastern Caribbean sea later on Tuesday



Eastern Pacific – Tropical Outlook



FEMA

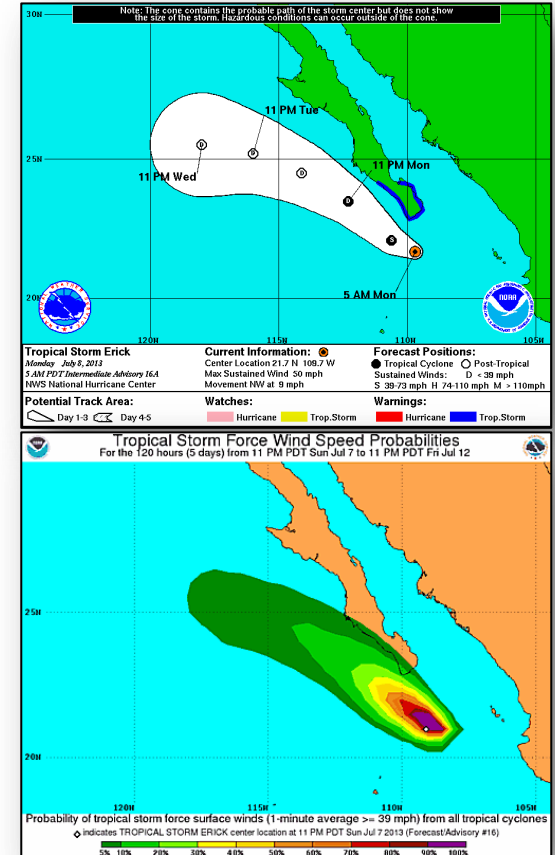


Eastern Pacific – Tropical Storm Erick

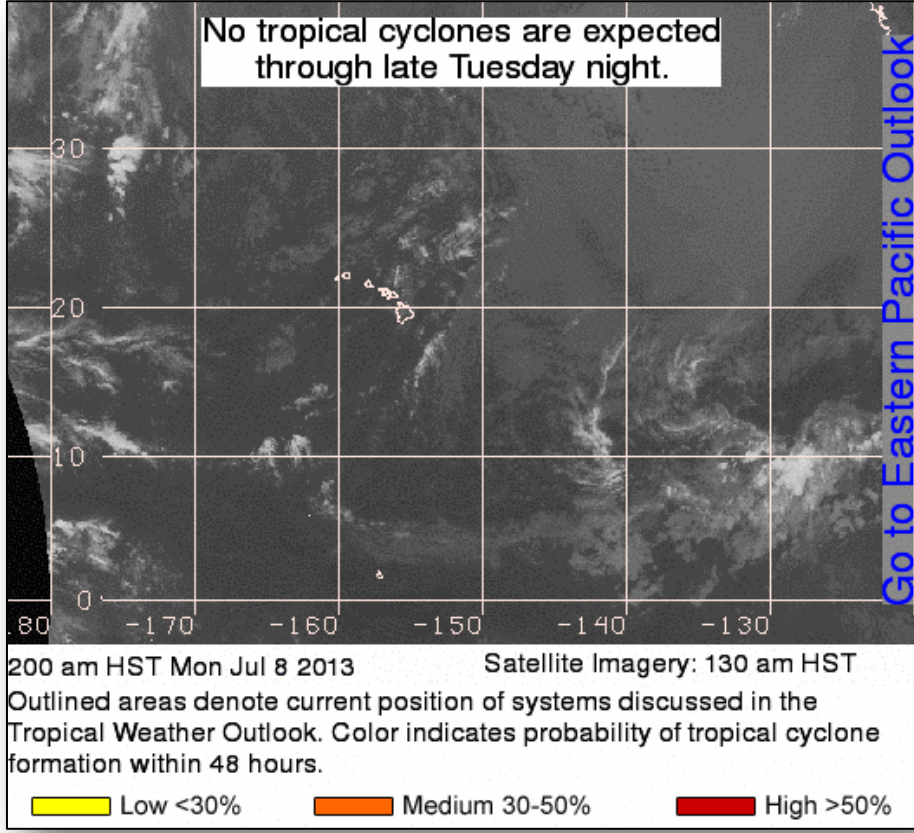


As of 8:00 a.m. EDT

- 85 miles S of southern tip of Baja California Mexico
- Moving NW at 9 mph
- Max sustained winds 50 mph
- Moving NW motion expected next couple of days
- Gradual weakening is forecast during the next 48 hours
- Center will pass southern portion of Baja California Peninsula early today
- Tropical storm-force winds extend outward to 60 miles
- Swells generated by Erick affecting portions of southern Baja California peninsula; these swells likely to cause life-threatening surf and rip current conditions



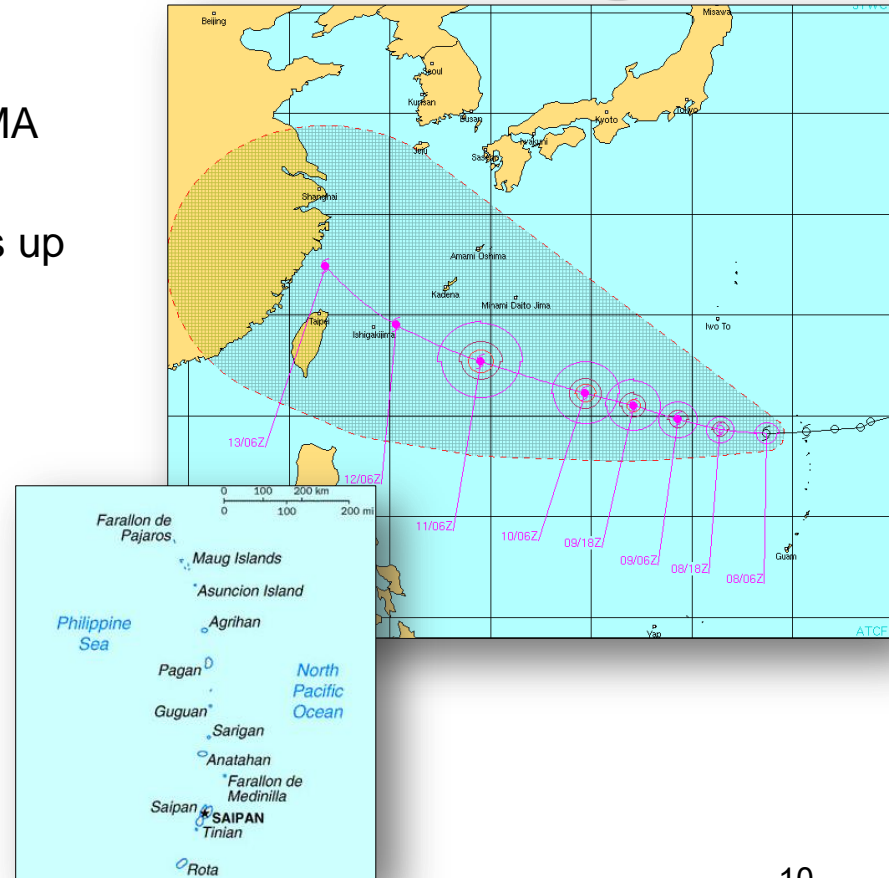
Central Pacific – Tropical Outlook



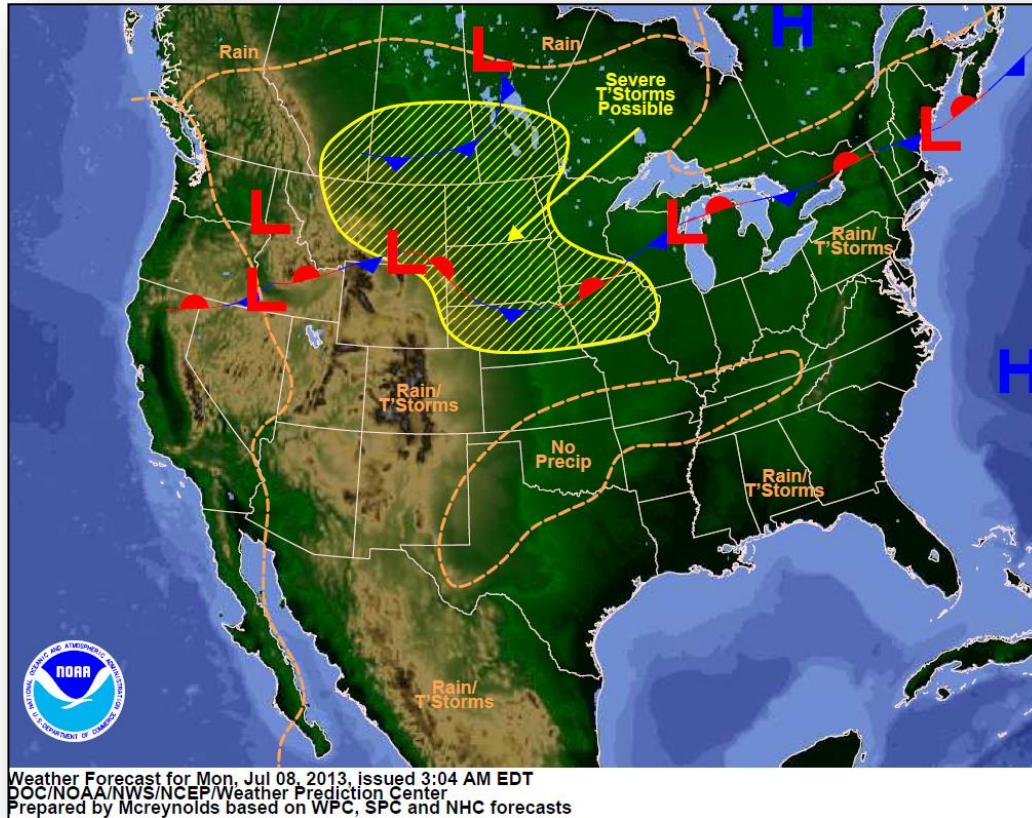
Western Pacific – TS 07W (Soulik)

As of 8:00 a.m. EDT

- TS Soulik located 422 miles SSE of IWO JIMA
- Moving W at 21 mph
- Maximum sustained winds 50 mph with gusts up to 63 mph
- Tropical Storm Soulik CPA - Kadena AFB
 - 219 miles
 - Arriving in four days
 - Winds of 103 mph, gusting to 126 mph



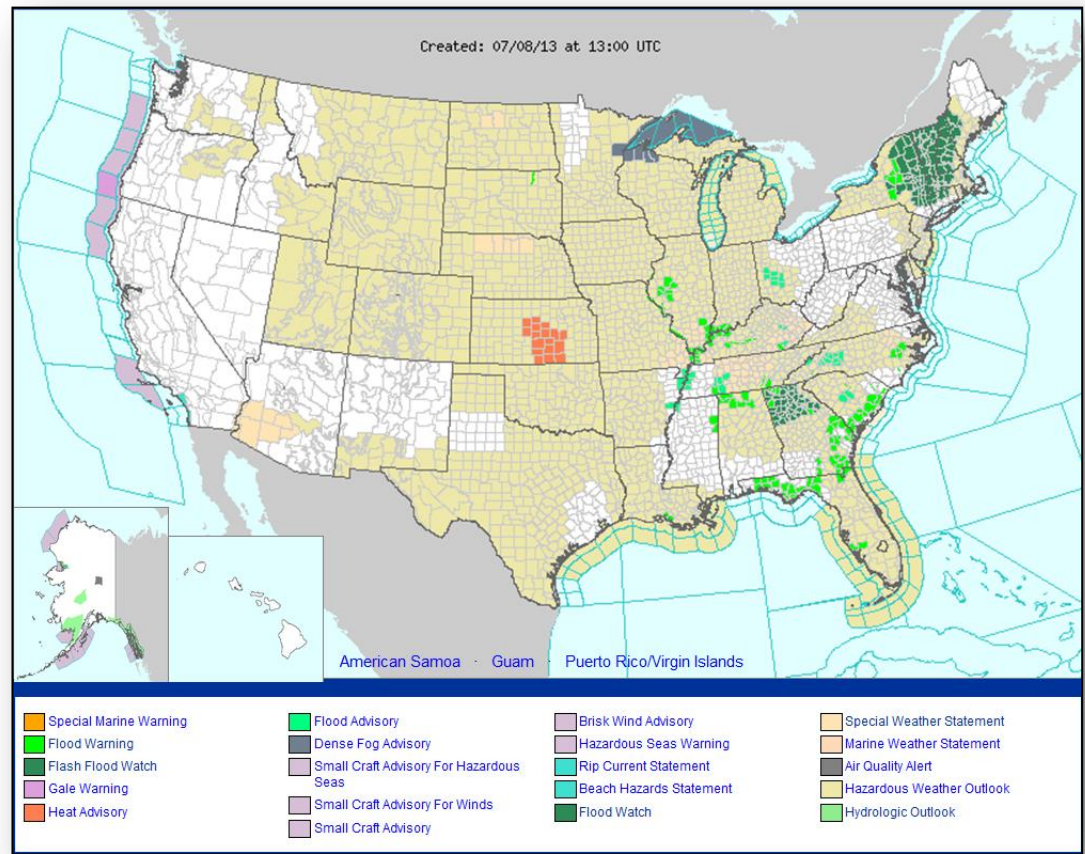
National Weather Forecast



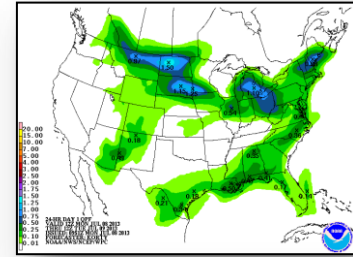
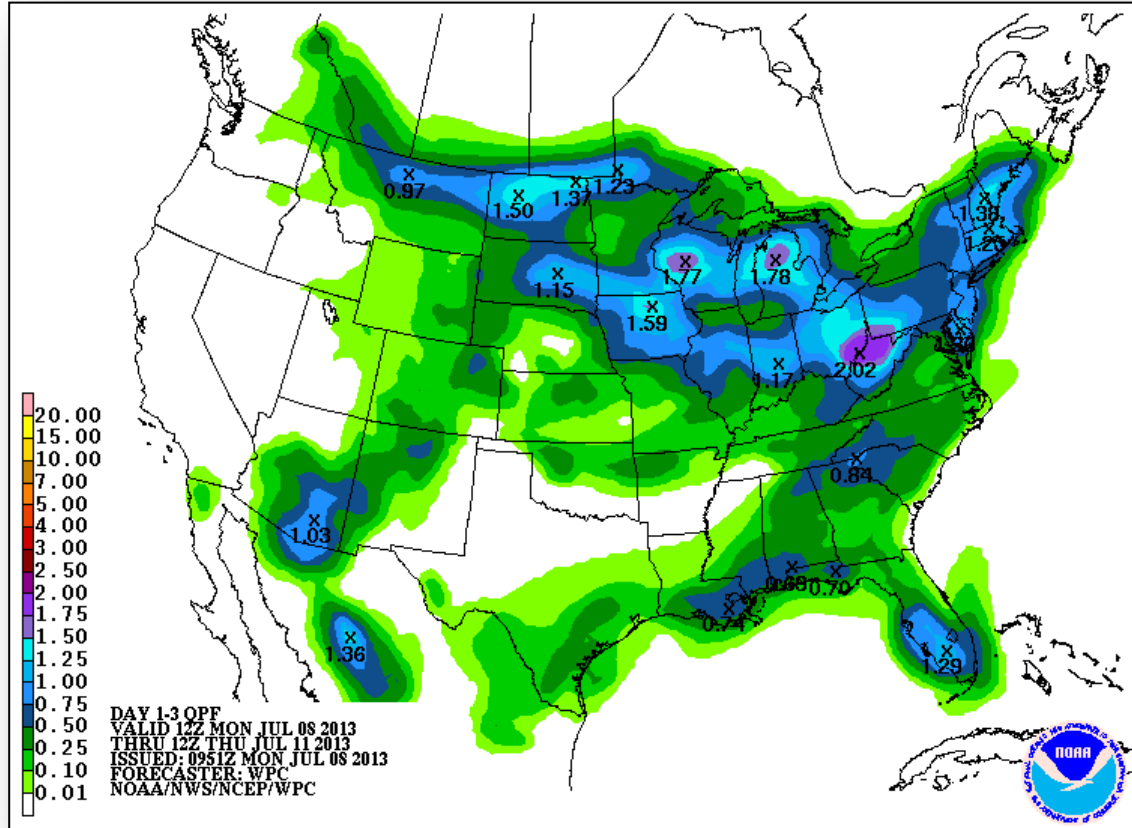
Active Watches/Warnings



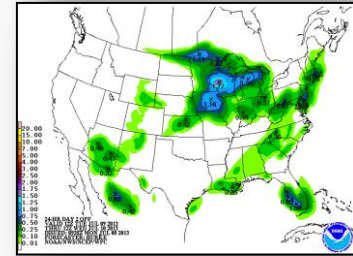
FEMA



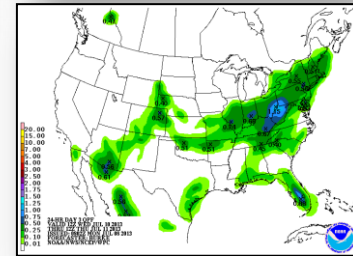
Precipitation Forecast Days 1-3



DAY 1

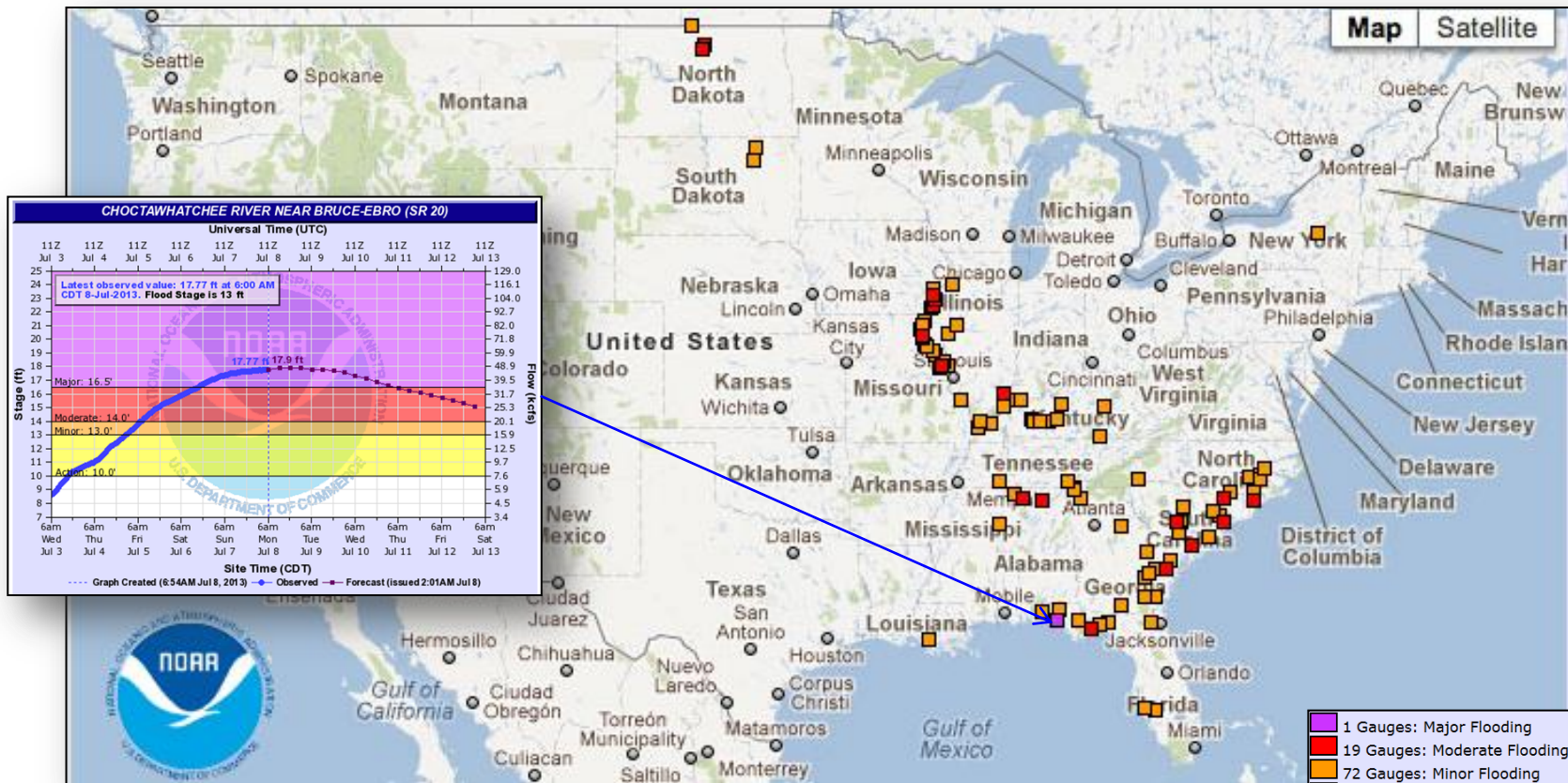


DAY 2

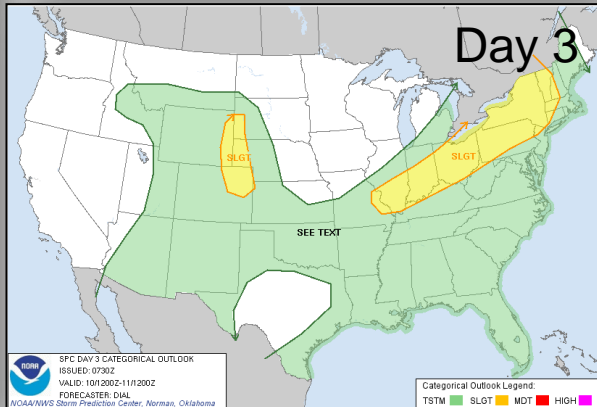
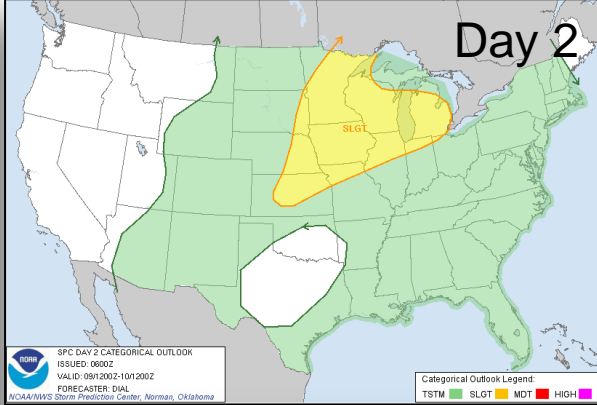
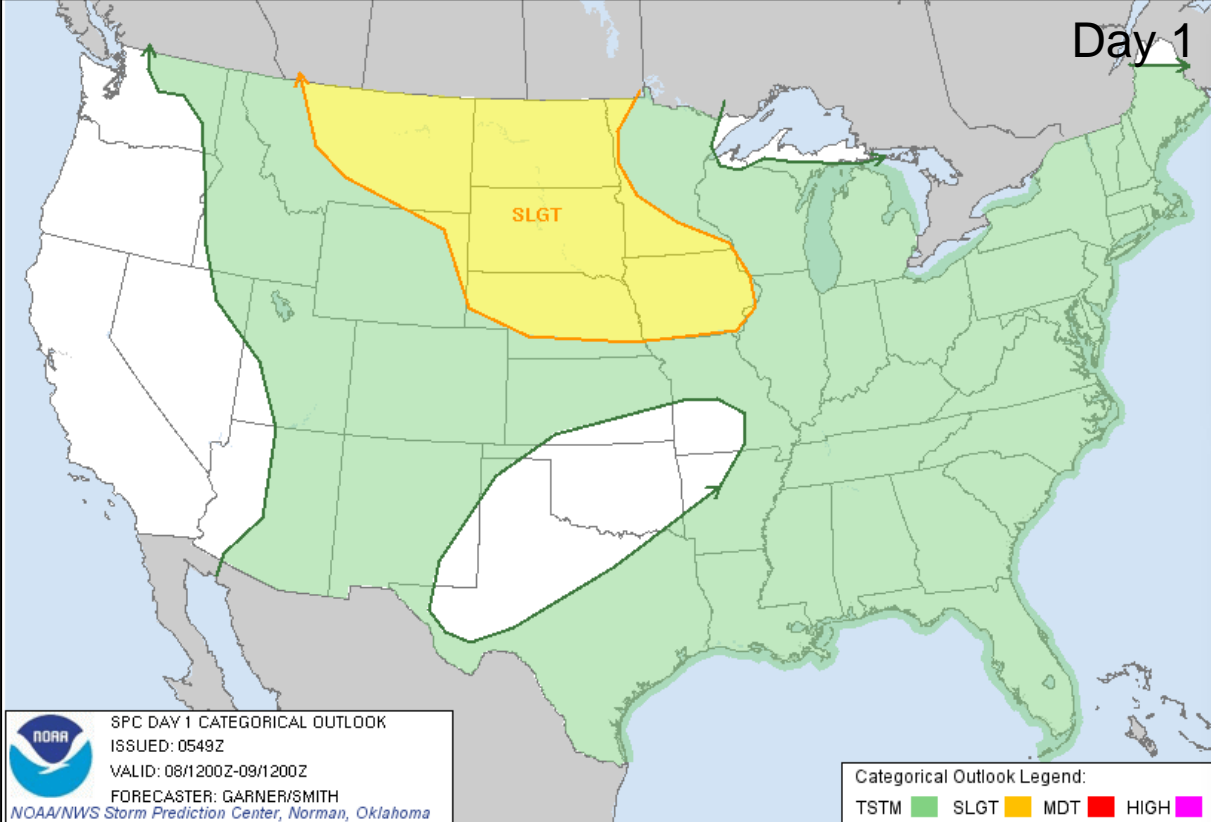


DAY 3

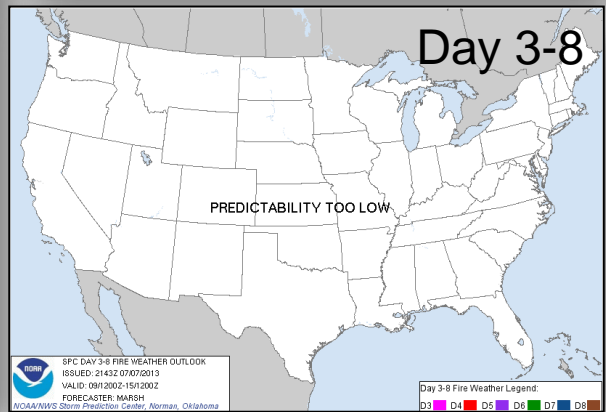
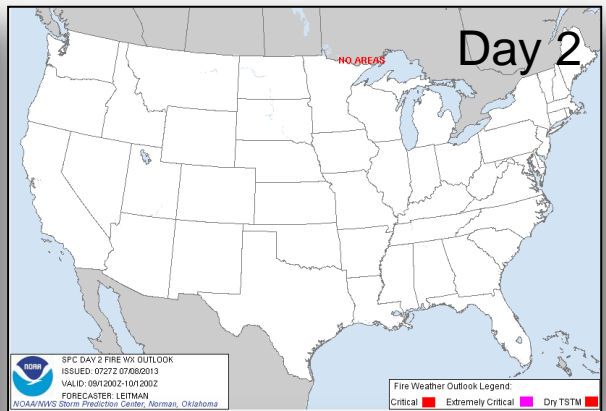
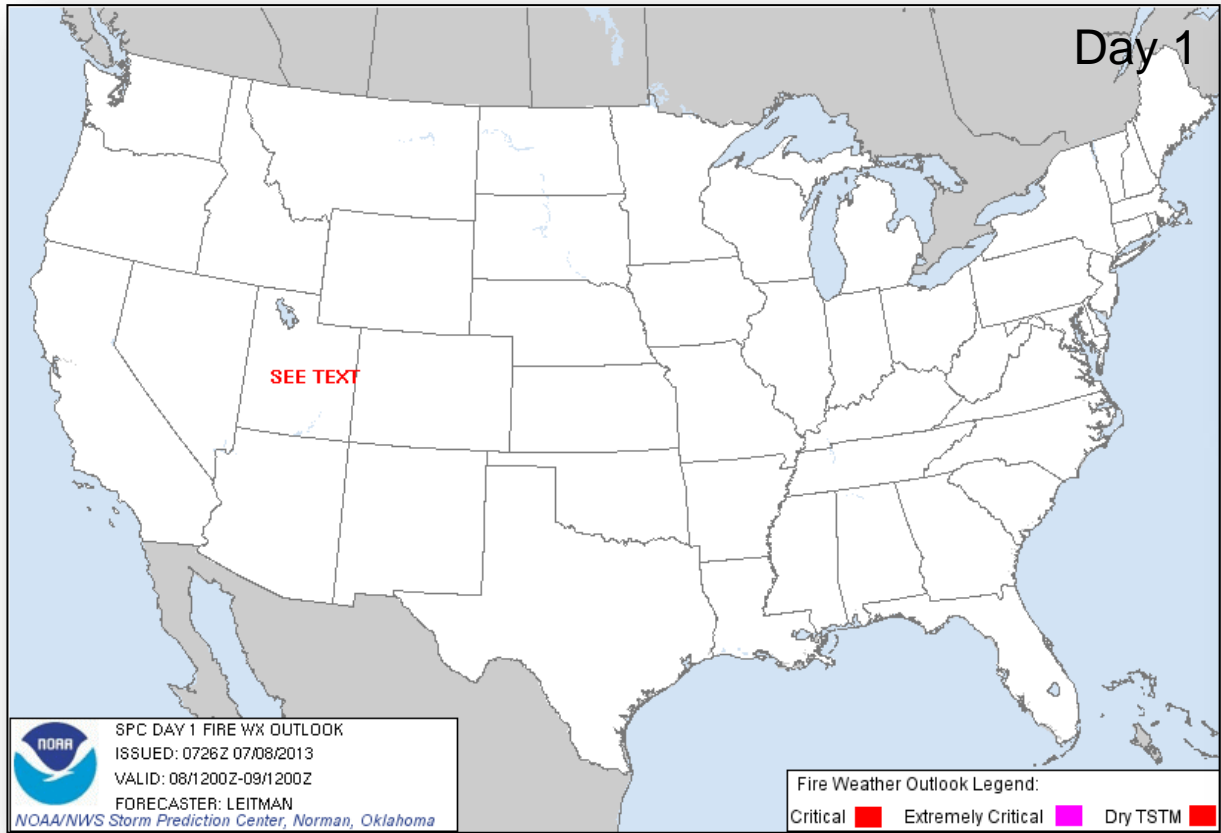
River Forecast – 7 Day



Convective Outlooks Days 1 – 3



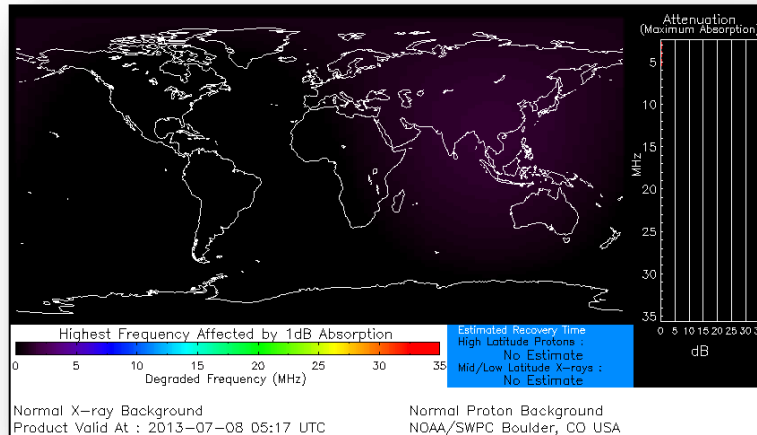
Critical Fire Weather Areas Days 1 – 8



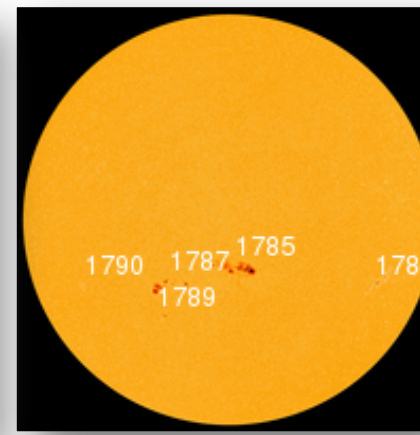
Space Weather

NOAA Scales Activity Range 1 (minor) to 5 (extreme)	Past 24 Hours	Current	Next 24 Hours
Space Weather Activity:	None	None	Minor
• Geomagnetic Storms	None	None	None
• Solar Radiation Storms	None	None	None
• Radio Blackouts	None	None	R1

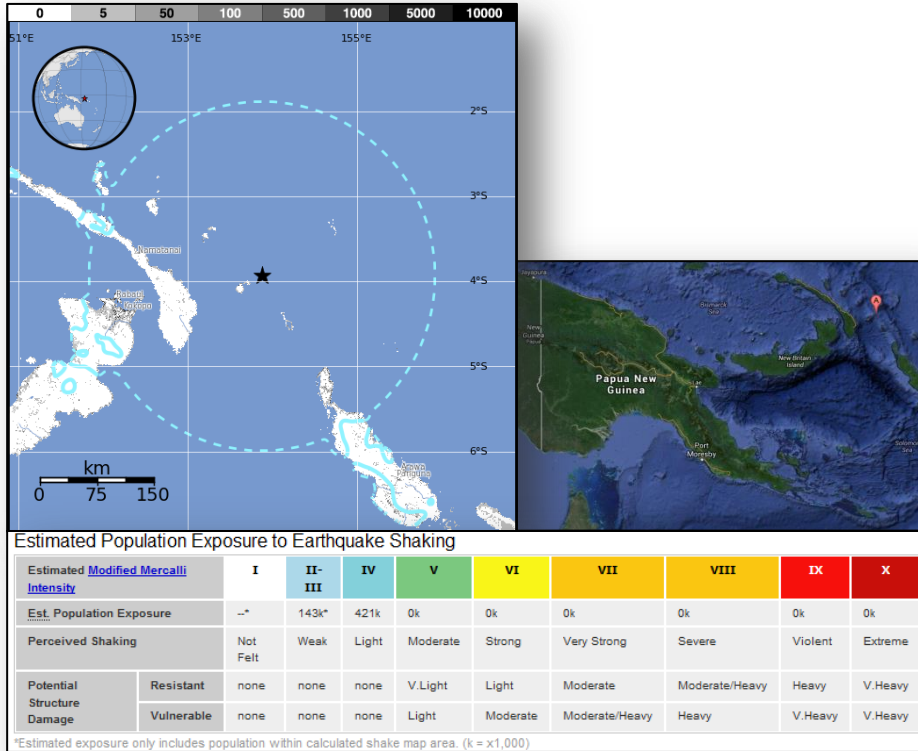
HF Communication Impact



Sunspot Activity



Earthquake Activity – International



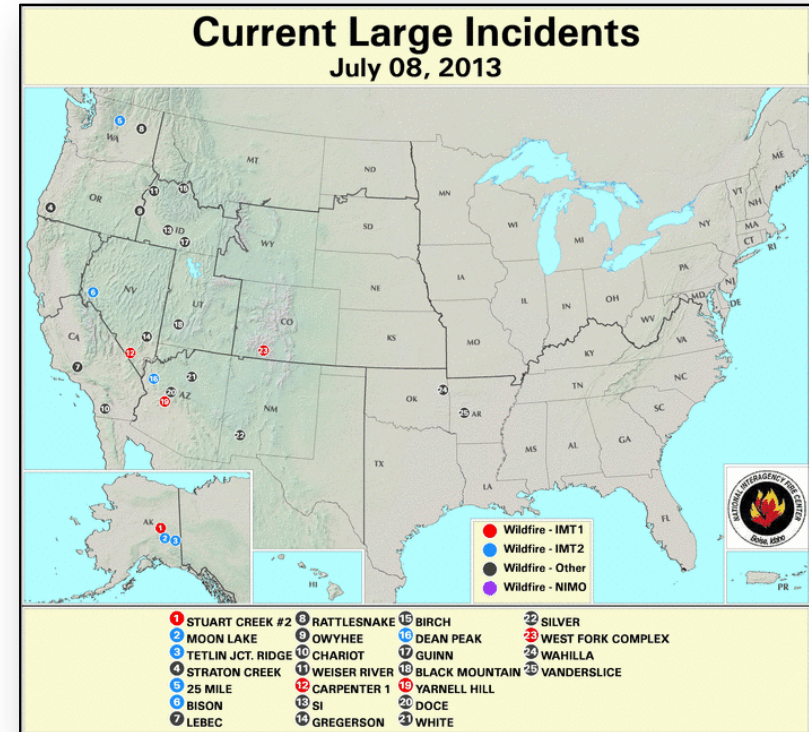
Papua, New Guinea

- M7.2 earthquake at 2:35 p.m. EDT, July 7
- 68 miles ENE of Taron, Papua New Guinea
- Depth – 235.4 miles
- Green **PAGER** Alert issued for shaking-related fatalities & economic losses
- Weak II-III / Light IV
 - Shaking felt by approximately 564k people
- Low likelihood of casualties or damage, injuries
- M6.6 aftershock at 4:30 p.m. EDT; depth 38 miles
- No tsunami generated

National Fire Activity

As of July 8, 2013:

- National Preparedness Level: 3
- Initial Attack Activity: Heavy (145 new fires)
- New Large Fires: 5
- Large Fires Contained: 2
- Uncontained Large Fires: 19
- Area Command Teams committed: 1
- NIMOs committed: 0
- Type 1 IMT(s) Committed: 5
- Type 2 IMT(s) Committed: 7
- States Affected: CA, CO, AZ, NM, OR, UT, AK, ID, WA, NV, OK, AR



Wildfire Summary



Fire Name (County)	FMAG #	Acres burned	% Contained / Est. Containment date	Evacuations (Residents)	Structures Threatened	Structures Destroyed	Fatalities / Injuries
Colorado (1)							
West Fork Complex (Mineral / Rio Grande counties)	5031-FM-CO June 21	110,405 (+377)	19% (-6%)	1,500	441 (-2,102)	1	0/3 (+1)
Arizona (1)							
Dean Peak Fire (Mohave County) FINAL	5033-FM-AZ July 2	5,400 (+100)	90% (+25)	409	0	0	0/0 (-1)
Nevada (1)							
Carpenter One Fire (Clark County)	5034-FM-NV July 5	14,458 (+350)	15% (+10)	520 (-30)	501 (+101)	0	0/0
Alaska (1)							
Stuart Creek 2 Fire (Fairbanks North Star Borough)	N/A	64,570	5%	1,500	901	0	0/0

Disaster Requests & Declarations



Declaration Requests in Process		Requests APPROVED (since last report)	Requests DENIED (since last report)
4	Date Requested	0	0
Montana – DR Flooding	July 1, 2013		
New York – DR Flooding	July 1, 2013		
North Dakota – DR Severe Storms and Flooding	July 2, 2013		
Missouri – DR Severe Storms, Straight-line Winds, Tornadoes, and Flooding	July 3, 2013		

FMAG Requests and Declarations



Action (since last report)	Total	FMAG No. and State
Requests DENIED	0	
Requests APPROVED	1	Approved July 5, 2013 FEMA-5034-FM-NV
Requests Expected Next 24 Hours	0	None as of 1200 7/5/13

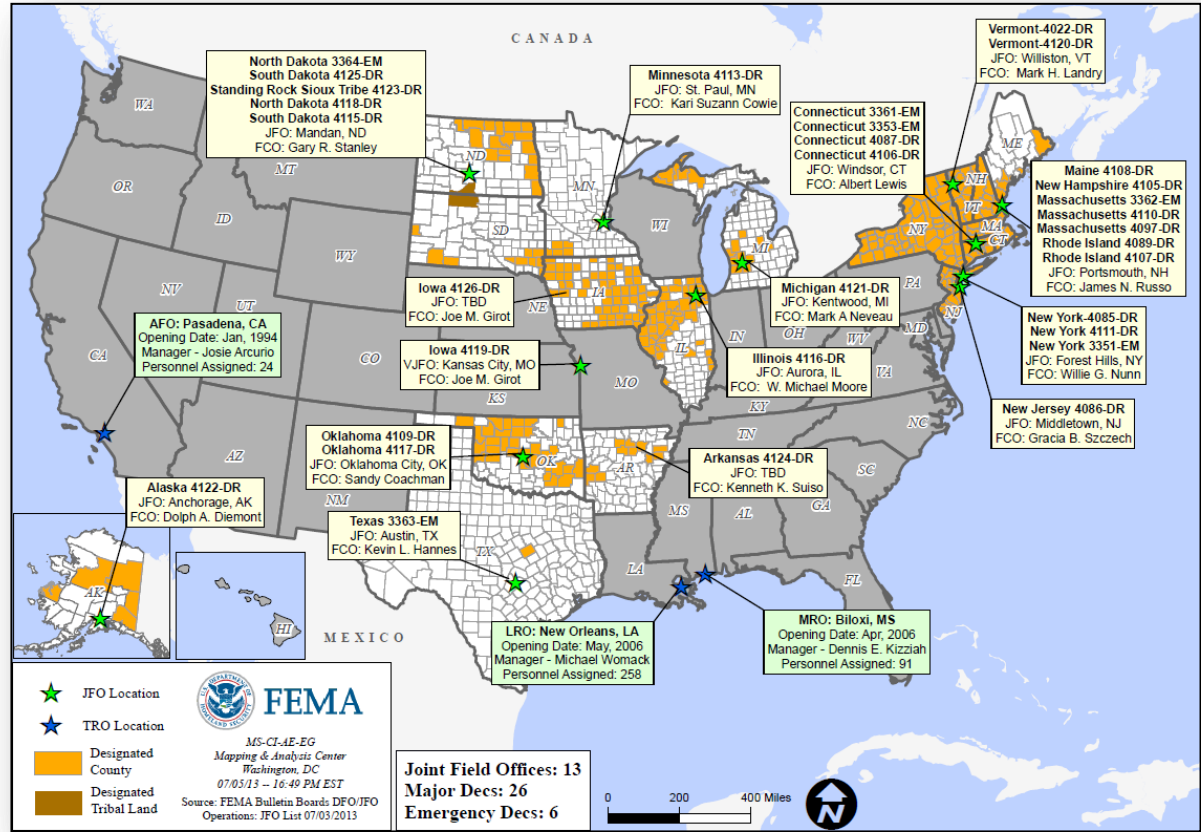
As of July 5, 2013	2013	2012*
FMAGs Approved	12	22
FMAGs Denied	4	12
* Cumulative FMAG figures as of this date in 2012		

Joint Preliminary Damage Assessments



Region	State / Location	Event	IA/PA	Number of Counties		Start – End
				Requested	Complete	
I	VT	Flooding	PA	3	0	7/9 - TBD
II	NY	Rain & Flooding June 27, 2013	PA	17	7	7/1-TBD
			IA	5	4	
V	MN	Severe Storms & Flash Flooding June 20 -23, 2013	PA	23	0	7/9 -7/11
VII	IA	Severe Weather & Flooding June 21 & continuing	PA	11	0	7/9- TBD
VIII	CO	Severe Storm & Flooding June 29, 2013	IA	1	0	7/8 - TBD
			PA	1	1	7/5 – 7/6
VIII	ND	Severe Storms & Flash Flooding (Turtle Mt Band of Chippewa) May 17 – June 16, 2013	IA	1 tribe	0	7/8 – 7/9
IX	AZ	Yarnell Wildfire Damage June 30, 2013	IA	1	0	7/7 - TBD

Open Field Offices as of July 8, 2013



OFDC Cadre Member Status

Federal Coordinating Officer

Deployed	Detailed	Available	Not Available	Total
22	2	10	3	37
Total Available	Type 1	Type 2	Type 3	Type 4
12*	2	5	4	1

* All Type 1 FCOs are available unless deployed to a Level 1 event

Federal Disaster Recovery Coordinator

Deployed	Available	Pending Hire	On Board	Positions
6	3	1	9	10

As of: 07/5/2013

MCOV Fleet / Deployment Status



MCOV FLEET STATUS						MCOV DISASTER SUPPORT DEPLOYMENTS					
Location	Units Assigned	Available FMC	Deployed Committed	PMC	Unavailable	DR-State	OPCON	En Route	Unit Prep	Open Request	Notes:
DC Cumberland	2	2				DR-4117-OK	4				
MERS Maynard	1	0			1						
MERS Frederick	8	8									
MERS Thomasville	14	13			1						
DC Ft Worth	20	14	4		2						
MERS Denver	2	2									
MERS Bothell	4	3			1						
Sacramento	4	4									
TOTAL	55	46	4	0	5	TOTAL	4	0	0	0	
Included in above totals, units in route for turn-in.											

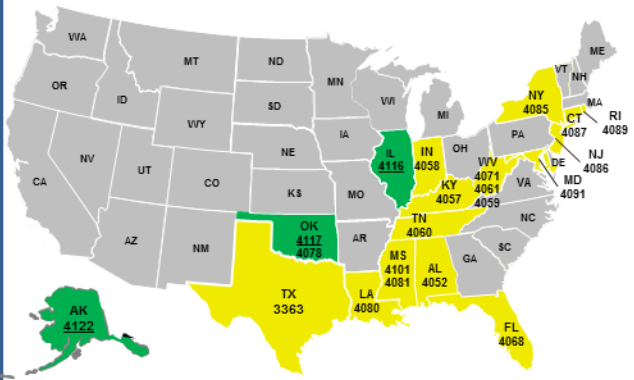
Fully Mission Capable	50
Partially Mission Capable	0
Non-Mission Capable	5
Total Not Deployed	51

Data as of: 07/07/13 @ 1500

Active IA Disasters - Referral Status & Awards



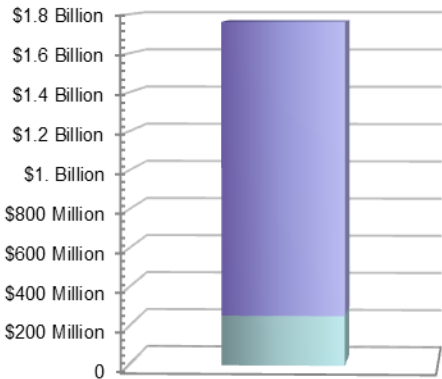
Active IA Disasters



Legend	
# of DRs	
3	Open Registration Period (60 days from Declaration, unless extended)
18	IHP Active – IHP Assistance period remains open (18 Months from Declaration)

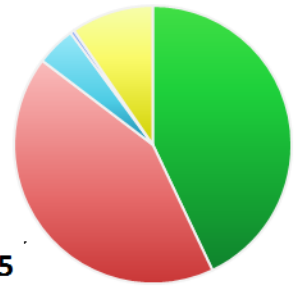
Total IHP Awards

Total Awards:
302,178
Total Max Grants:
7,456



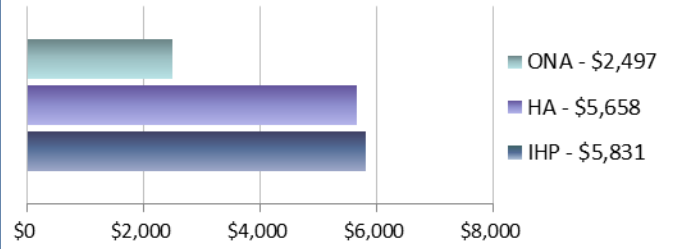
IHP Referral Status

- Approved - 302,178
- Ineligible - 298,358
- Withdrawn - 32,175
- Pending (FEMA) - 3,306
- Pending (Applicant) - 67,698



Total Referrals - 703,715

Average IHP Awards



21 Total IHP Active Disasters (All information on this slide reflects data for these disasters)

Max Grants = Applicants awarded maximum IHP (\$31,900 as of FY 2013)

Data as of: 07/07/13 @ 1500

IA Registration Statistics



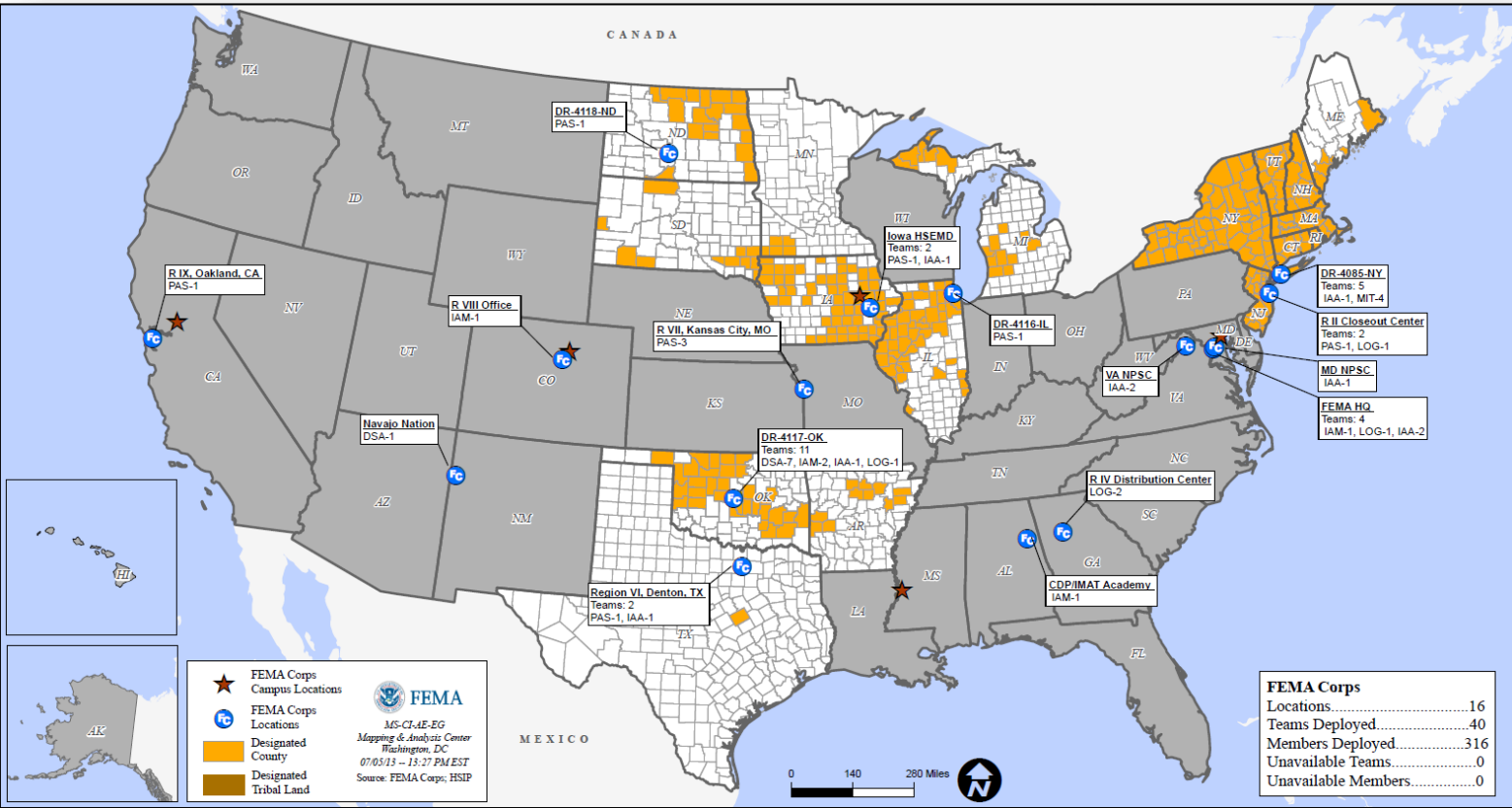
IA Registrations and IHP Amounts as of July 7, 2013 @ 1500

DR/EM # - State	Registrations	Approved Applicants	Total HA Approved	Total ONA Approved	Total IHP Approved
4116 - IL	82,062	52,150	\$111,059,777	\$17,509,020	\$128,568,796
4117 - OK	13,720	3,031	\$8,304,455	\$3,444,402	\$11,748,857
4122 - AK	163	0	\$0.00	\$0.00	\$0.00
Totals	95,945	55,181	\$119,364,232	\$20,953,422	\$140,317,653
48 hour change	+1,281	+850	+\$1,473,093	+\$205,174	+\$1,678,267

NPSC Call Data for July 4, 2013

Total Calls Answered (Help Line + Registration Intake)	1,040
Average time to answer call	12 seconds
Maximum / Minimum time to answer a call	41 seconds / 8 seconds

FEMA Corps Team Locations



FEMA Corps	
Locations	16
Teams Deployed	40
Members Deployed	316
Unavailable Teams	0
Unavailable Members	0

FEMA Workforce Status Report



Workforce Type	Total	Available To Deploy	Committed To Other Activities (All Exemptions)	Deployed	Operational Readiness
Reservist	6,423	3,547 (53%)	745 (12%)	2,131 (35%)	Mission Capable
Cadre of On-Call Response Employees (CORE)	2,554	1,014 (40%)	8 (0%)	1,532 (60%)	Mission Capable
Permanent Full Time (PFT)	4,979	4,439 (89%)	13 (0%)	527 (11%)	Mission Capable
FEMA Corps	316	0 (0%)	0 (0%)	316 (100%)	Deployed
DHS Surge Capacity Force	3,789	1,528 (40%)	*2,261 (60%)	0 (0%)	Awaiting DHS/FEMA Activation
Workforce Totals	18,061	10,528 (58%)	3,027 (17%)	4,506 (25%)	

= <70% Deployed/Mission Capable
 = >80% Deployed
 = 70% - 79% Deployed/Partially Mission Capable
 = >80% Committed to Other Activities-Awaiting DHS/FEMA Activation

***Deployable based on FEMA's need for DHS activation**

IMAT Status



National Teams					
Team		Status/Location		Team	
BLUE		NYC		WHITE	
Regional Teams					
Team	Status	Team	Status	Team	Status
Region I	NH	Region V	IL	Region VIII	ND/SD/SRST*
Region II	NY	Region VI-1	OK	Region IX-1	
Region III		Region VI-2	AR	Region IX-2	
Region IV-1		Region VII		Region X	
Region IV-2		*SRST – Standing Rock Sioux Tribe			

= Available/Mission Capable
 = Assigned/Deployed
 = Available/Partially Mission Capable
 = Not Mission Capable

Urban Search & Rescue



INCIDENT SUPPORT TEAMS (Red-White-Blue) – Monthly On Call Rotation																	
JAN	FEB	MAR	APR	MAY	JUN	JUL	AUG	SEP	OCT	NOV	DEC						
WEST				CENTRAL				EAST									
Team		Status		Team		Status		Team		Status							
CA-TF1	Available	AZ-TF1	Available	FL-TF1	Available	CA-TF2	Available	FL-TF2	Available	CA-TF3	Available	IN-TF1	Available	MA-TF1	Available		
CA-TF4	Available	MO-TF1	Available	MD-TF1	Available	CA-TF5	Available	NE-TF1	Available	NY-TF1	Available	CA-TF6	Available	NM-TF1	Non-operational	PA-TF1	Conditionally Available
CA-TF7	Available	NV-TF1	Conditionally Available	VA-TF1	Available	CA-TF8	Available	TN-TF1	Conditionally Available	VA-TF2	Available	WA-TF1	Available	TX-TF1	Available	OH-TF1	Available
		UT-TF1	Available														

= Available/Mission Capable
 = Available/Partially Mission Capable

= Assigned/Deployed
 = Out-of-Service

RRCC / Regional Watch Center Status



Region	RRCC	Regional Watch Center
I	Watch/Steady State	Maynard MOC (24/7)
II	Watch/Steady State	24/7
III	Watch/Steady State	24/7
IV	Watch/Steady State	24/7
V	Watch/Steady State	24/7
VI	Watch/Steady State	Denton MOC (24/7)
VII	Watch/Steady State	24/7
VIII	Watch/Steady State	Denver MOC (24/7)
IX	Watch/Steady State	24/7
X	Watch/Steady State	Bothell MOC (24/7)

National Team Status



Team/Status	Current Location	Remarks
National Watch Center	Washington, DC	Watch/Steady State
NRCC	Washington, DC	Not Activated
HLT	Miami, FL	Activated
DEST	Washington, DC	Not Activated
Mission Capable	Partially Mission Capable	Not Mission Capable



FEMA

FEMA's mission is to support our citizens and first responders to ensure that as a nation we work together to build, sustain, and improve our capability to prepare for, protect against, respond to, recover from, and mitigate all hazards.