



# FEMA

## Daily Operations Briefing

October 30, 2012

As of 8:30 a.m. EDT

# Significant Activity: Oct 29 – 30



**Significant Events:** Post Tropical Cyclone Sandy Impacts/Response

## **Tropical Activity:**

- Atlantic – Post Tropical Cyclone Sandy
- Eastern Pacific – Tropical Depression Seventeen-E; Area 1 – LOW (10%)
- Central Pacific – No tropical cyclones expected through Wednesday night
- Western Pacific – No activity affecting U.S. territories

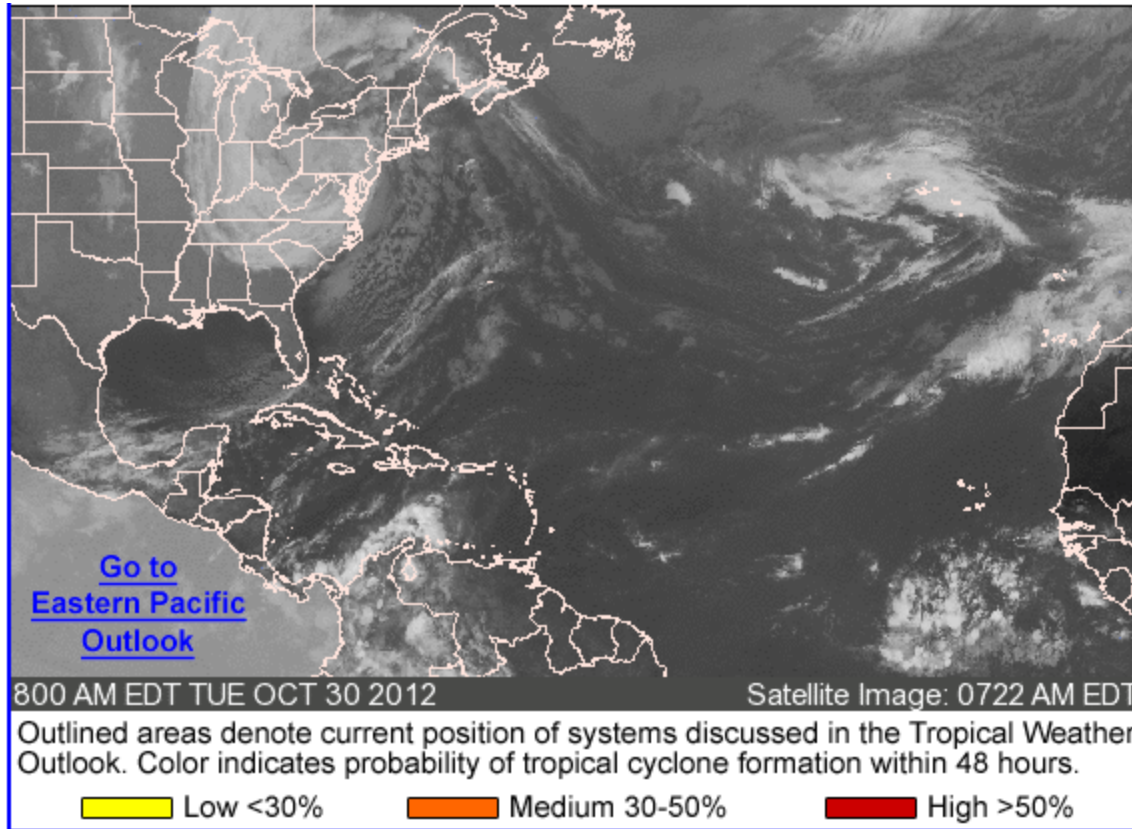
## **Significant Weather:**

- High winds, heavy rain & flash flooding – Mid-Atlantic & Northeast; Conditions starting to slowly improve
- Heavy snow – Central & Southern Appalachians & higher elevations of Pacific Northwest
- Critical Fire Weather Areas : FL, AL, GA
- Red Flag Warnings: FL, AL, TN, AK, MS
- Space Weather: None

## **Declaration Activity:**

- FEMA-3357-EM-DE, FEMA-4085-DR-NY, FEMA-4086-DR-NJ signed October 29
- Request for Emergency Declaration from NH
- Emergency Declaration for WV & VA approved (FEMA-3357/3358-DR-WV/VA)

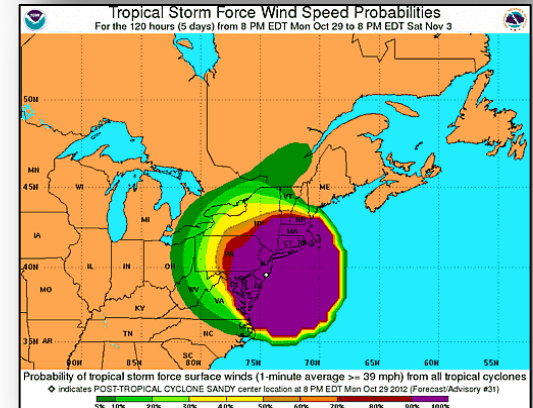
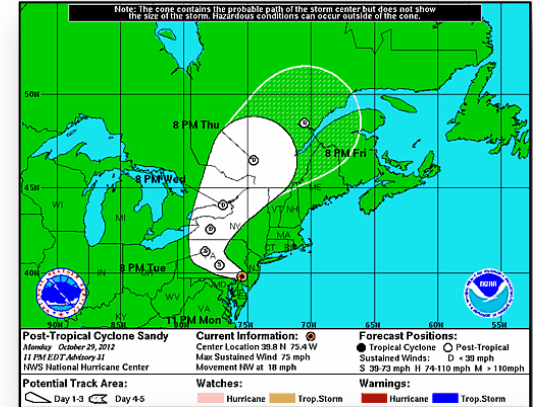
# Atlantic – Tropical Outlook



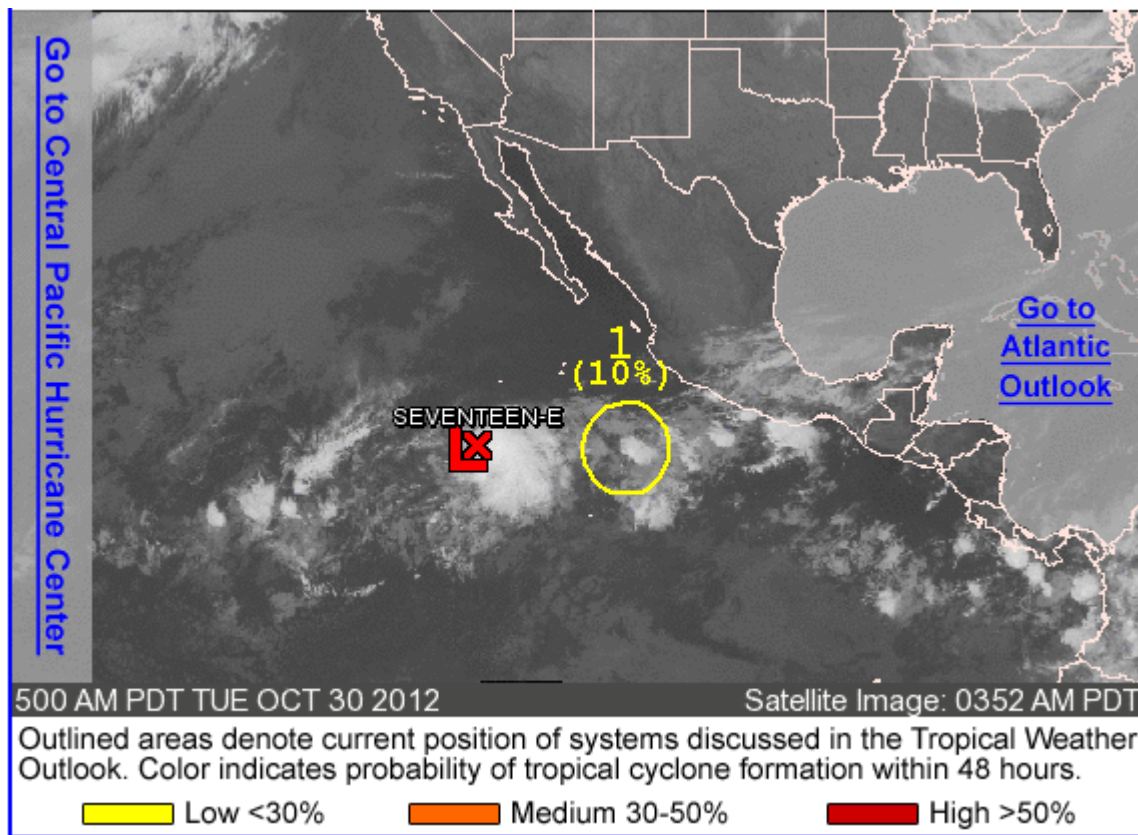
# Atlantic – Post Tropical Cyclone Sandy

As of 5:00 a.m. EDT

- 90 miles W of Philadelphia, PA
- Moving WNW at 15 mph; some reduction in speed expected today
- This general motion expected to continue through this evening
- Expected to move into western New York tonight and into Canada on Wednesday
- Steady weakening forecast next 48 hours
- Max sustained winds 65 mph
- High wind warnings, including gale force winds, over coastal waters of the Mid-Atlantic States, NY and New England
- Rainfall totals: 3-6 inches NC; 4-8 inches Mid-Atlantic states (including DelMarva peninsula) with isolated amounts of 12 inches



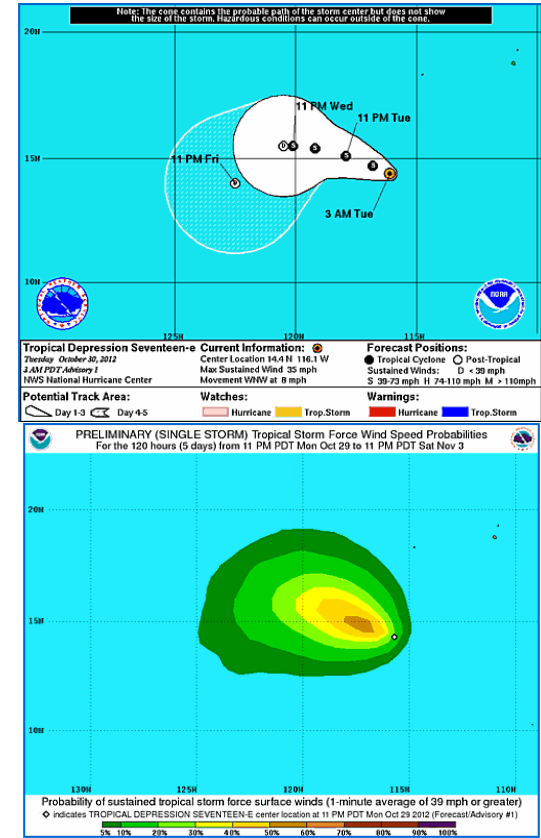
# Eastern Pacific – Tropical Outlook



# Eastern Pacific – TD Seventeen-E

As of 5:00 a.m. EDT

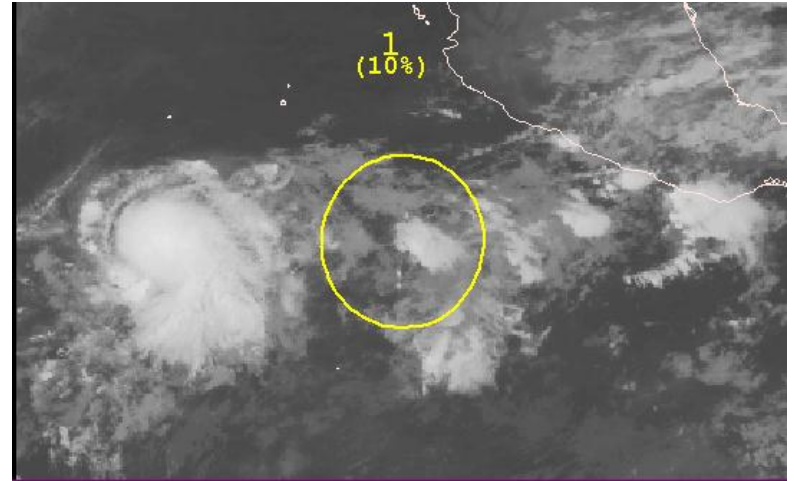
- 715 miles SW of Cabo San Lucas, Mexico
- Moving WNW at 8 mph
- This general motion expected to continue next 24-48 hours
- Maximum sustained winds 35 mph
- Some strengthening forecast; could become Tropical Storm later today



# Eastern Pacific – Area 1

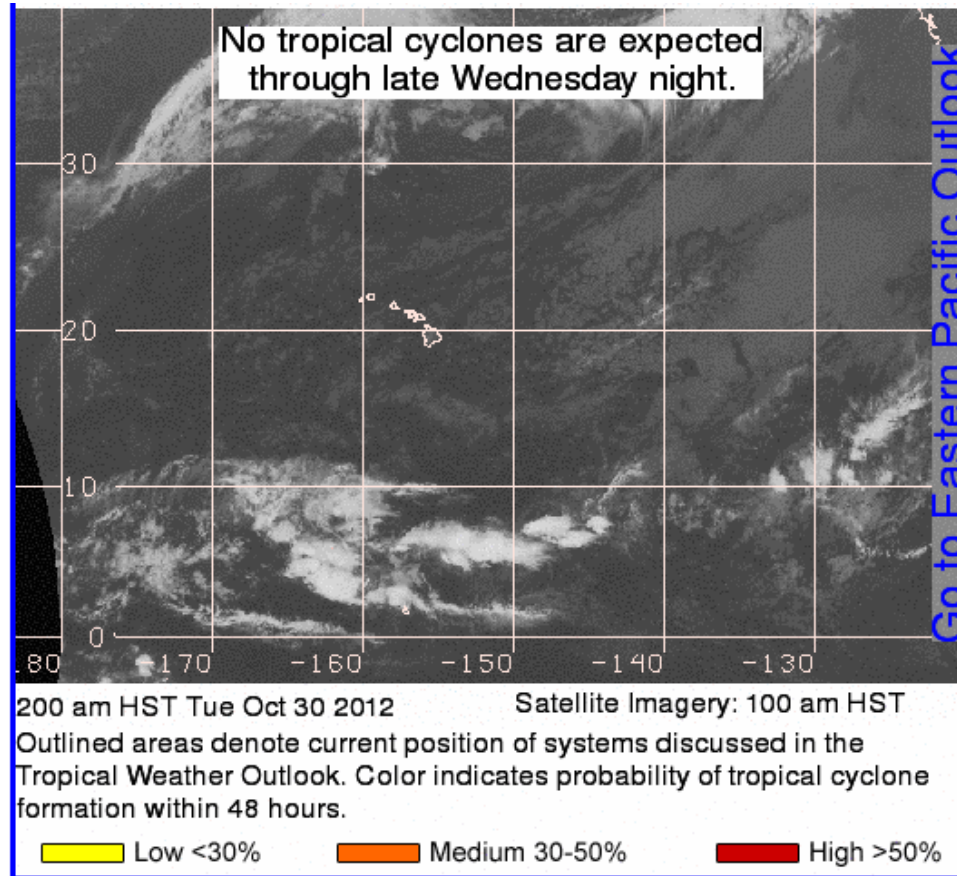
As of 8:00 a.m. EDT

- 400 miles SW of Manzanillo, Mexico
- Moving slowly WNW
- Upper level winds to become less conducive for development within day or so
- LOW (10%) chance of becoming tropical cyclone next 48 hours



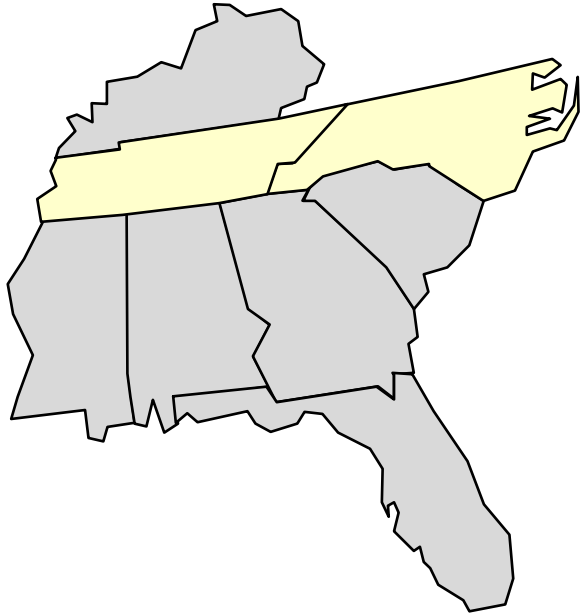


# Central Pacific – Tropical Outlook





# Post Tropical Cyclone Sandy– Region IV



 States Activated / Enhanced Readiness

## Regional Response

▲ RRCC returned to Watch/Steady State

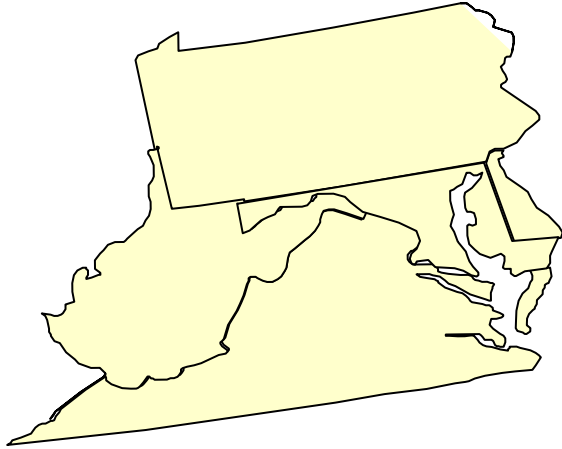
### Regional IMAT deployments

- Region IV IMAT deployed to NC

## State Impacts/ Response

- NC EOC: Level I (24/7)
  - All shelters have closed
  - Power Outages: 5,946
- TN EOC: Level IV (Localized Emergency)

# Post Tropical Cyclone Sandy – Region III



 States Activated / Enhanced Readiness

## Regional Response

- RWC at Enhanced Watch
- ▲ RRCC at Level I (Full Activation); RWC at Enhanced Watch
- LNOs deployed to VA, MD, & PA
- Non-disaster staff will telework Oct 29 & 30
- Region VII DCE deployed to Baltimore, MD
- Region VI DCE deployed to Richmond, VA
- USGS deployed field crew to Delmarva Peninsula

### Regional IMAT deployments

- Region III IMAT 1 deployed to PA
- Region III IMAT 2 deployed to DE
- Region V IMAT deployed to MD
- Region VI IMAT deployed to VA

## State Impacts/ Response

- ▲ VA EOC: Level I (24/7)
  - Shelters: 33 (+18) / 526 (+287) occupants
  - Power Outages: 185,075
- MD EOC: Level I (24/7)
  - Shelters 25 (+7) / 359 (+143) occupants
  - Power Outages: 316,131
- ▲ PA EOC: Full Activation (24/7)
  - Shelters: 27 (+16)/ 293 (+224) occupants
  - Power Outages: 1,229,575
- DC EOC: Level IV (24/7)
  - Shelters: 5 (-2) / 13 (-365) occupants
  - Power Outages: 3,902
- WV EOC: Full Activation (24/7)
  - Shelters: 4 / no occupants
  - Power Outages: 162,648
- DE EOC: Full Activation (24/7)
  - Shelters: 7 / 909 occupants
  - Power Outages: 44,580

# Post Tropical Cyclone Sandy – Region II



 States Activated / Enhanced Readiness

## Regional Response

- RRCC at Level I (Full Activation) with ESFs 1 - 15 & DCE
- Mandatory evacuations are in effect for NJ & NY
- LNOs deployed to NJ, NYC & NY (Albany)
- ISB established at Joint Base McGuire/Dix/Lakehurst

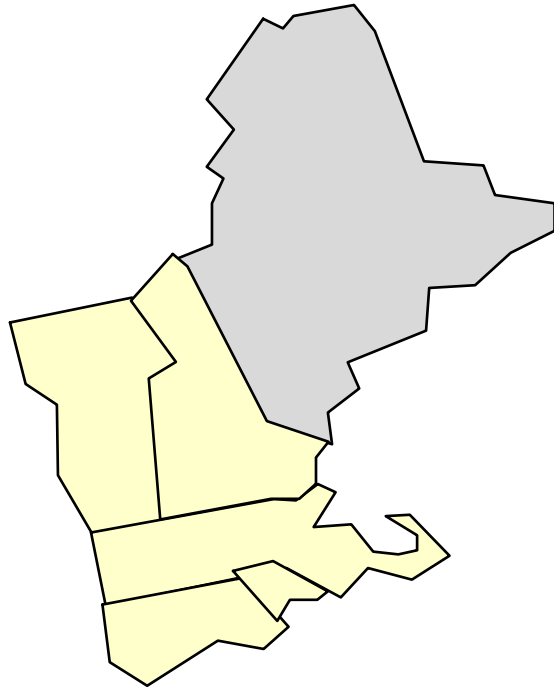
## Regional IMAT deployment

- Region II IMAT deployed to NY (Albany)
- Region VII IMAT deployed to NJ (Earle)

## State Impacts/ Response

- NY State EOC: Level I (24/7)
  - Shelters: 124 (+102) / 5,562 (+4,806) occupants
  - Power Outages: 1,937,202
- NJ State EOC: Level IV (24/7)
  - Shelters: 27 (+17) / 4,113 (+3,575) occupants
  - Power Outages: 1,506,004
- NYC OEM: Level I (24/7)

# Post Tropical Cyclone Sandy – Region I



 States Activated / Enhanced Readiness

## Regional Response

- RRCC at Level I (Full Activation) w/all ESFs, DOD & NWS
- ▲ LNOs deployed to MA, RI, CT, NH, VT & ME EMAs
- Region IX DCE deployed to Region I
- Commodities staged at ISB Westover AFB, MA

## Regional IMAT deployment

- Region I IMAT deployed to RI
- Region IV IMAT 2 deployed to NH
- Region VIII IMAT deployed to CT
- Region IX IMAT deployed to VT

## State Impacts/ Response

- CT EOC: Full Activation (24/7)
  - Shelters: 41 (+23) / 1,824 (+1,709) occupants
  - Power Outages: 782,641
- MA EOC: Full activation (24/7)
  - Shelter: 23 (+18) / 153 (+153) occupants
  - Power Outages: 291,893
- RI EOC: Full Activation (24/7)
  - Shelters: 9 / 26 (16) occupants
  - Power Outages: 116,477
- VT EOC: Full Activation
  - Shelters: 3 / 5 occupants
  - Power Outages: 18,432
- NH EOC: Full Activation (24/7)
  - Shelters: 7 / 2 occupants
  - Power Outages: 140,189
- ME EOC: Monitoring; Limited emergency declaration for power restoration;
  - Shelters: 1 / no occupants
  - Power Outages: 86,875

# Post Tropical Cyclone Sandy – Response



## **FEMA Headquarters Response:**

- NWC at Watch/Steady State
- NRCC activated to Level I (24/7) with all ESFs and all LNOs
- National IMATs
  - IMAT-Blue deployed to NYC (Region II)
  - IMAT-Red deployed to New Jersey (Region II)
  - IMAT-White deployed to Massachusetts (Region I)
- Urban Search & Rescue Red Incident Support Team & Federal Search & Rescue Coordination Group staged at US&R warehouse, Herndon, VA

## **FEMA Logistics:**

- Pre-designated Incident Support Bases (ISBs):
  - Westover Air Reserve Base (ARB), Massachusetts
  - Joint Base McGuire/Dix/Lakehurst, New Jersey

# Declarations Approved - Hurricane Sandy



- Emergency Declarations for Hurricane Sandy for the period beginning October 26 to 28, 2012 and continuing
- Emergency protective measures (Category B), limited to direct Federal assistance, for all counties in each state, at 75% federal funding
  - FEMA-3349-EM-Maryland (City of Baltimore) FCO: Michael J. Lapinski
  - FEMA-3350-EM-Massachusetts FCO: Justo Hernandez
  - FEMA-3351-EM-New York FCO: Philip E. Parr
  - FEMA-3352-EM-District of Columbia FCO: Steven S. Ward
  - FEMA-3353-EM-Connecticut FCO: Albert Lewis
  - FEMA-3354-EM-New Jersey FCO: Elizabeth Turner
  - FEMA-3355-EM-Rhode Island FCO: James N. Russo
  - FEMA-3356-EM-Pennsylvania FCO: Thomas J. McCool
  - ▲ FEMA-3357-EM-Delaware FCO: Regis Leo Phelan
  - ▲ FEMA-3358-EM-West Virginia FCO: Dolph A. Diemont
  - ▲ FEMA-3359-EM-Virginia FCO: Donald L. Keldsen
- Major Disaster Declarations for Hurricane Sandy for the period beginning October 26-29, 2012 and continuing
- Individual and Public Assistance (assistance for emergency work) and Hazard Mitigation statewide
  - ▲ FEMA-4085-DR-New York FCO: Michael F. Byrne
  - ▲ FEMA-4086-DR-New Jersey FCO: Michael J. Hall

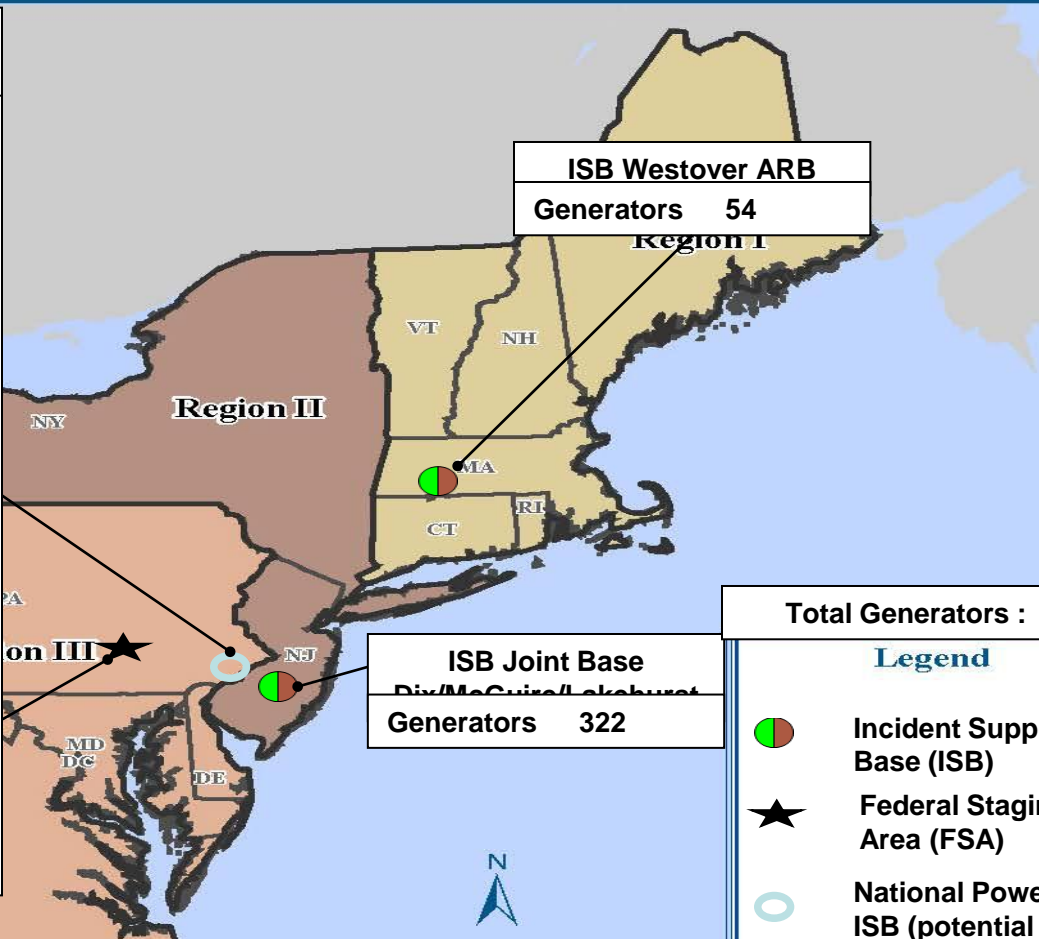


**National Power ISB  
Willow Grove**

**Generators to National Power ISB:**  
 6ea from Frederick :125-140KW  
 12ea from Atlanta :60KW and 200KW  
 89ea from Moffett: 20K  
 49ea from Fort Worth: 6 High End Generators from USACE :> 1 MW  
 Total Gens: 162

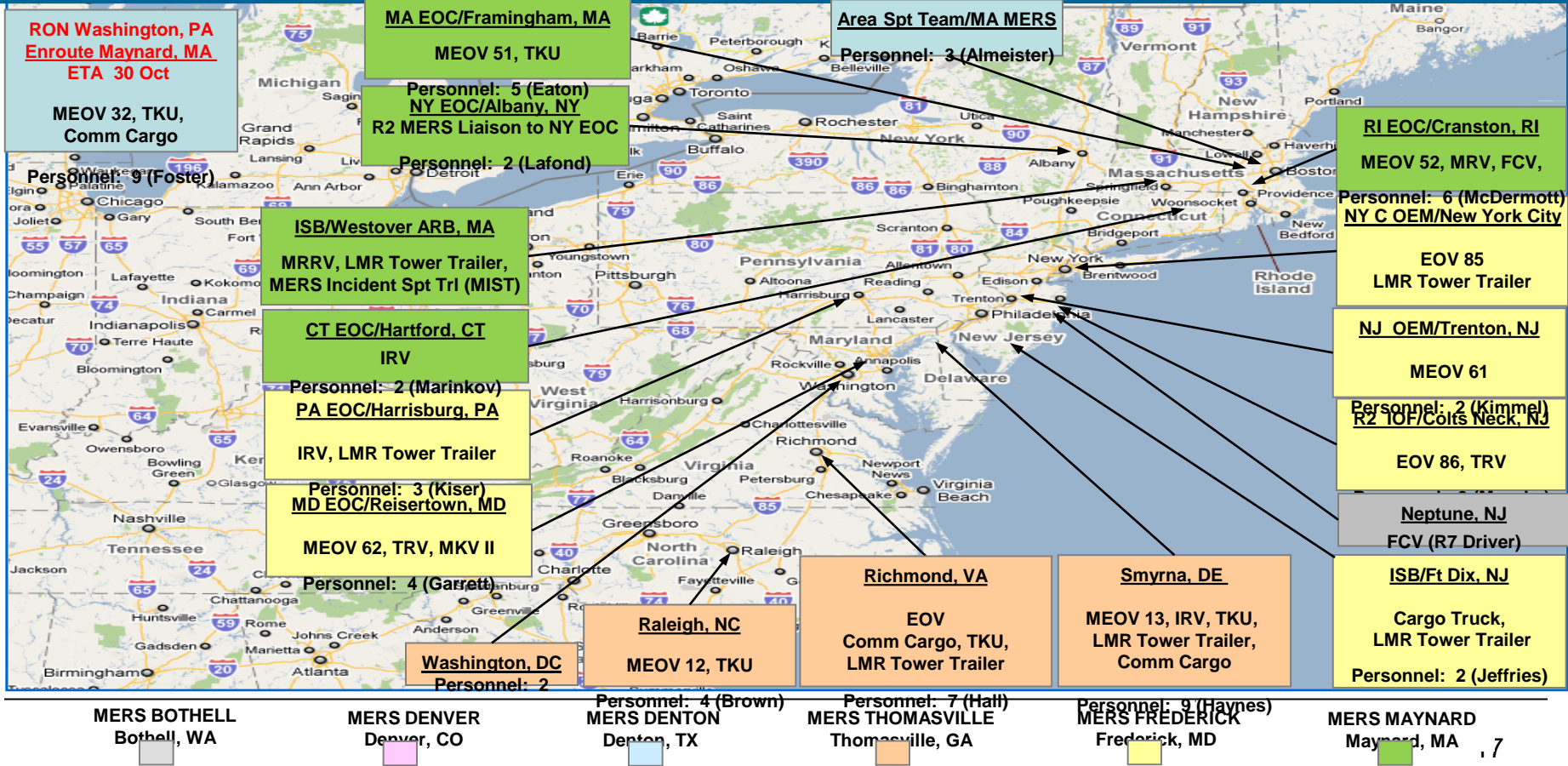
1ea BOM Kit from Frederick  
 1ea Spool Cable from Frederick

**Staffing:**  
 FEMA - ISB  
 USACE - ULA  
 USACE - DTOS  
 249<sup>th</sup> Engineer





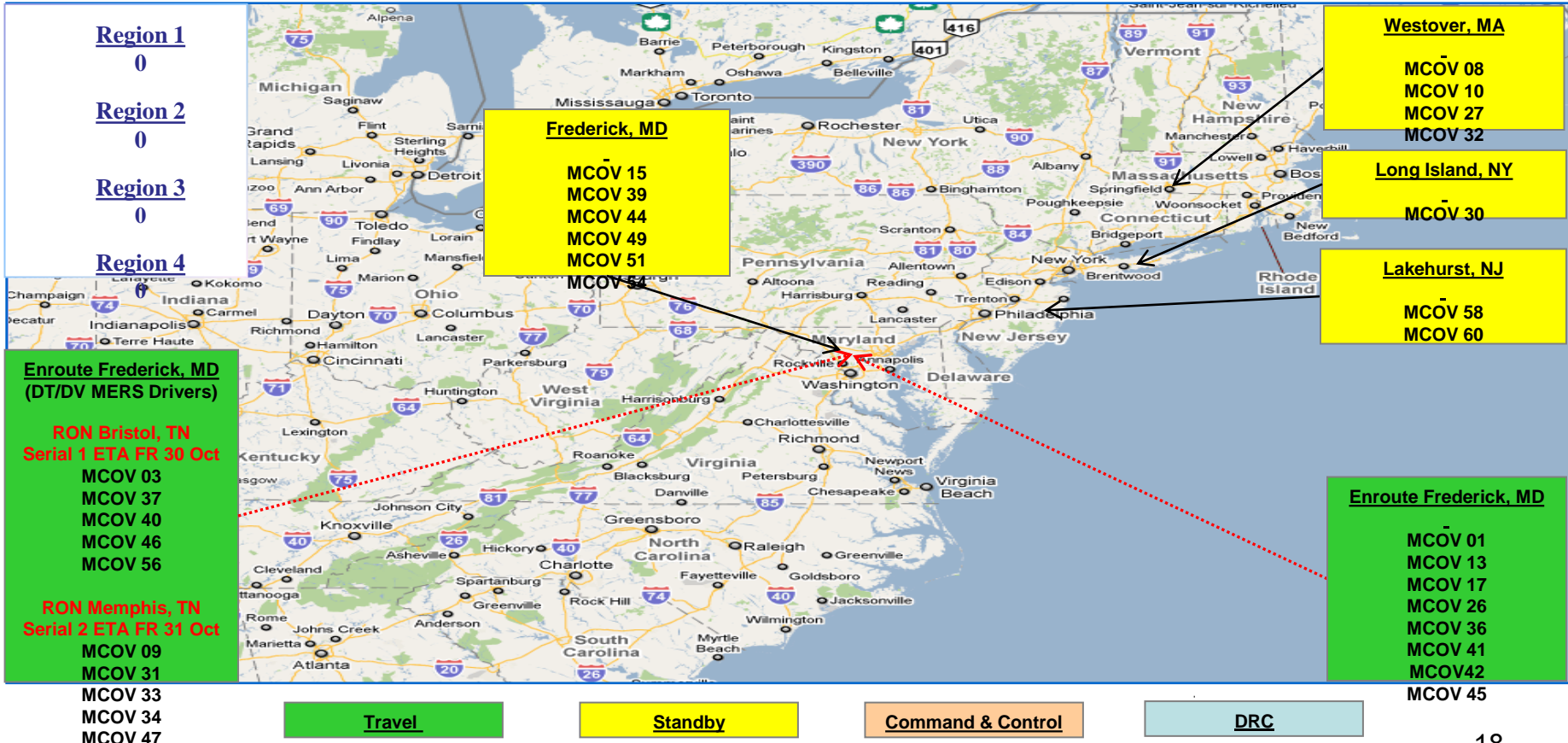
# MERS Deployed Priority Assets by Location



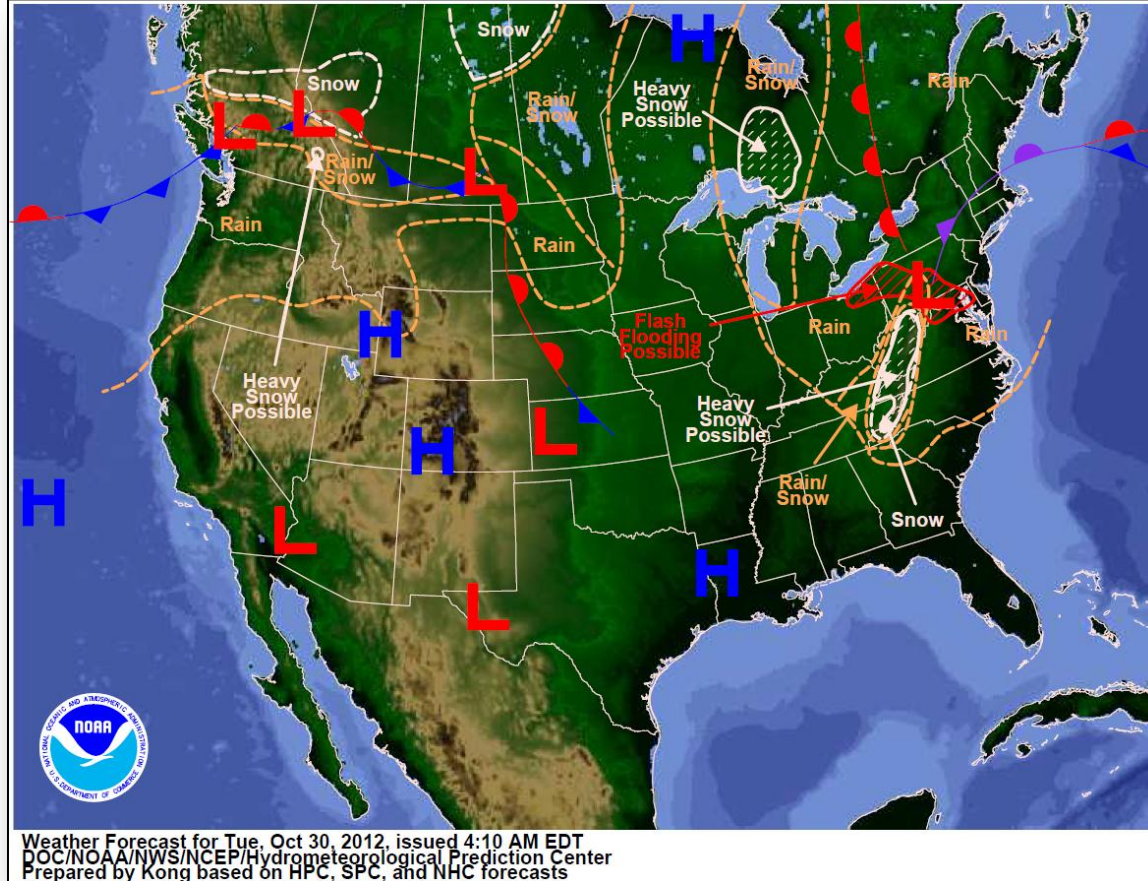
# MCOV Locations



## MCOV ASSIGNMENTS



# National Weather Forecast



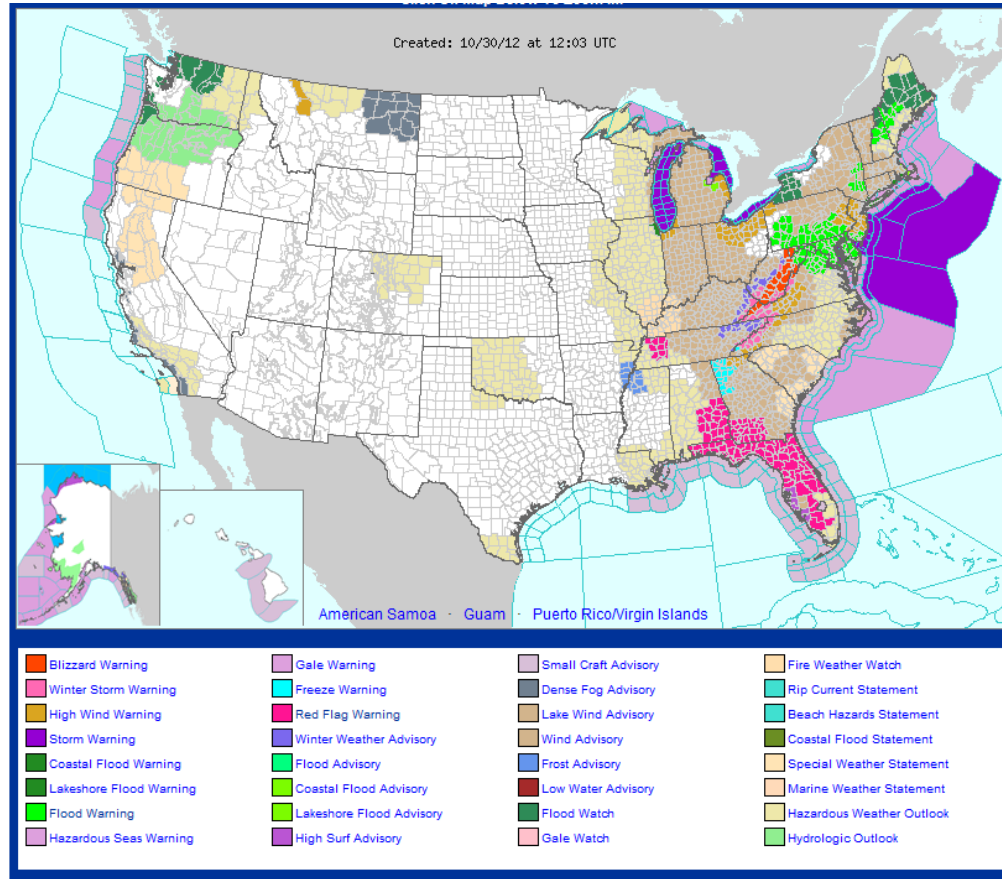
Weather Forecast for Tue, Oct 30, 2012, issued 4:10 AM EDT  
DOC/NOAA/NWS/NCEP/Hydro-meteorological Prediction Center  
Prepared by Kong based on HPC, SPC, and NHC forecasts



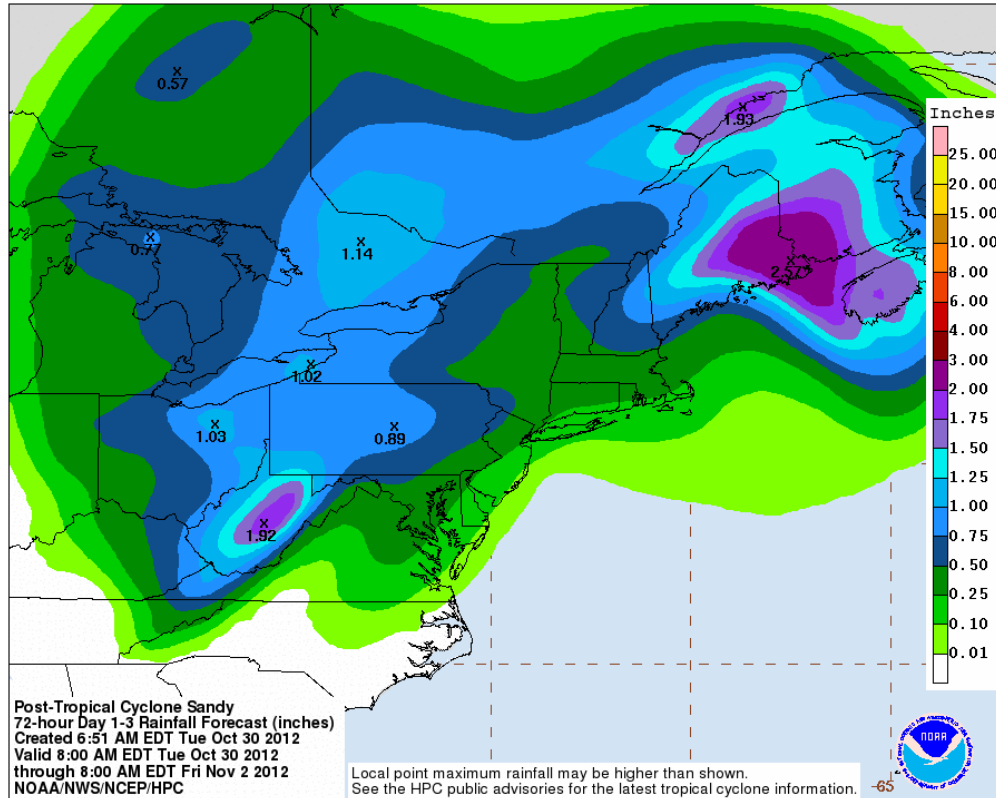
# Active Watches/Warnings



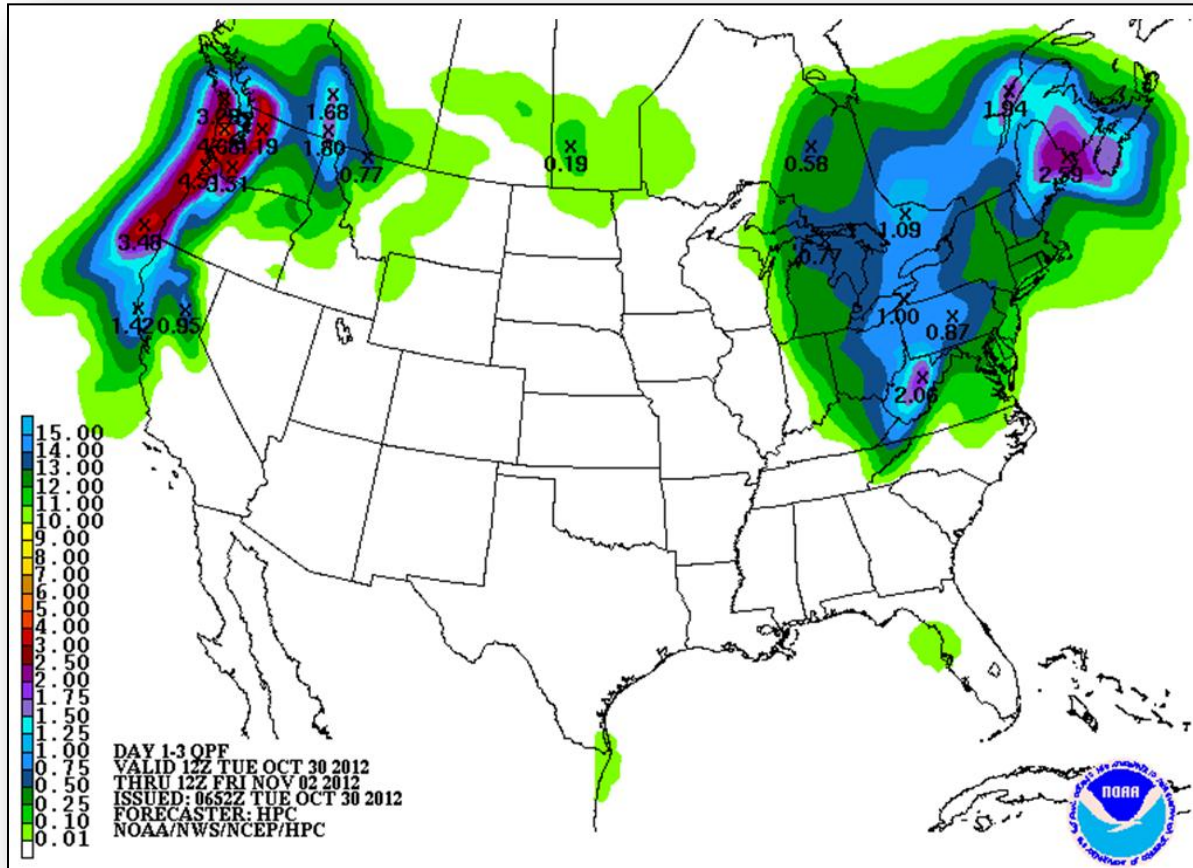
FEMA



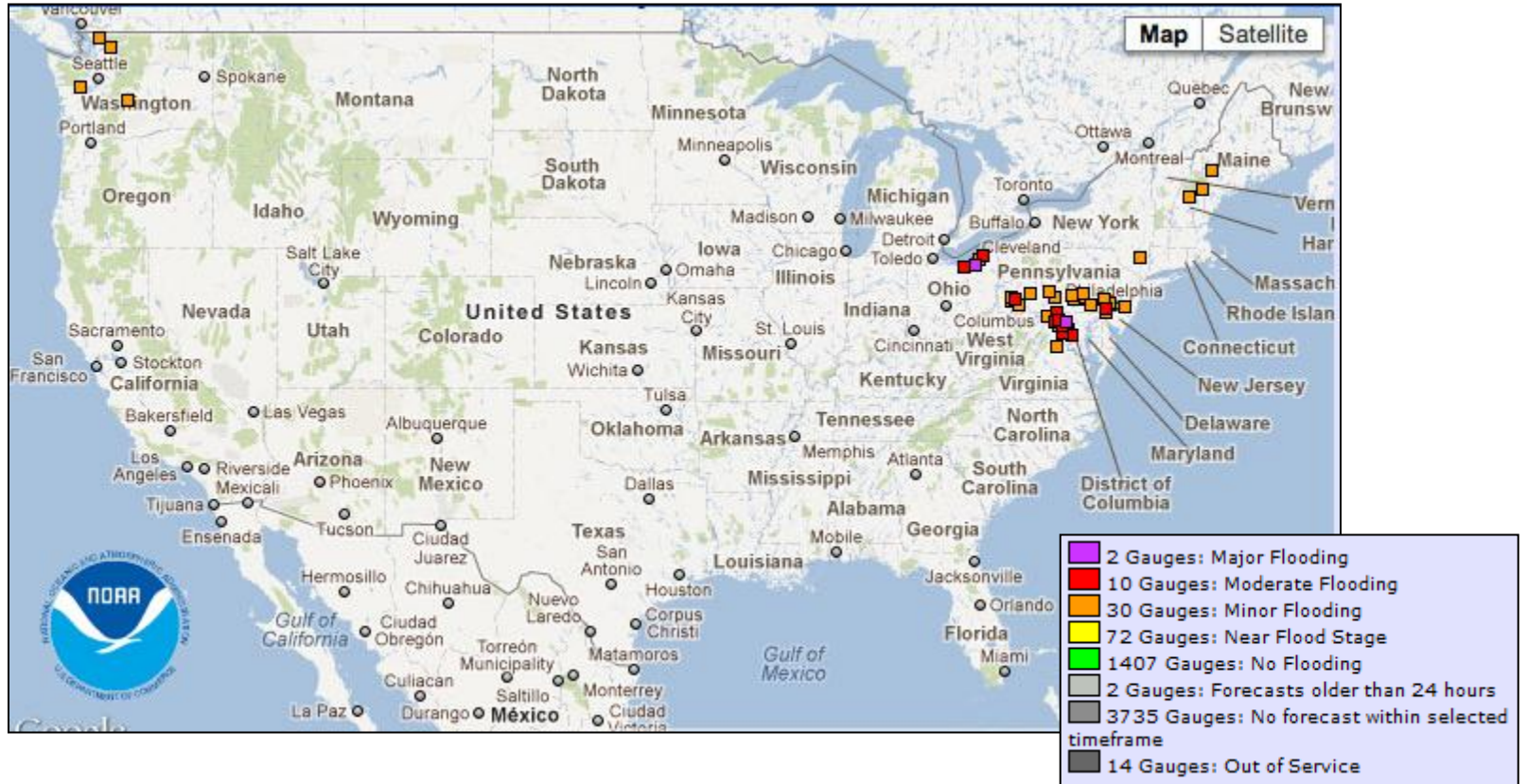
# Post Tropical Cyclone Sandy Precipitation Forecast



# Precipitation Forecast Days 1 – 3

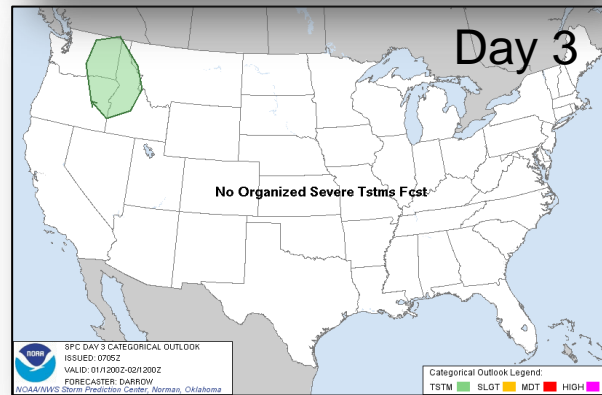
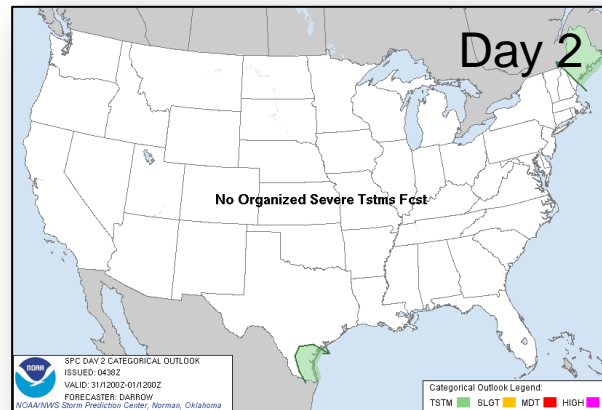
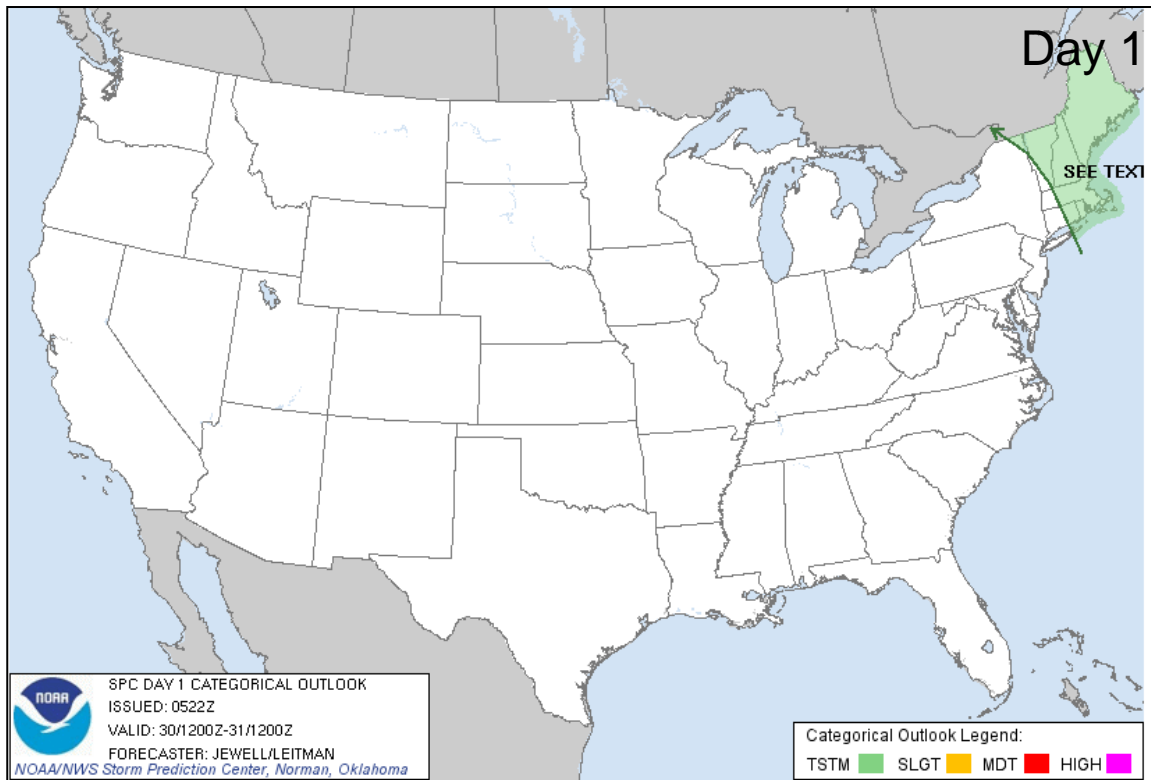


# River Flood Outlook – 7 Day

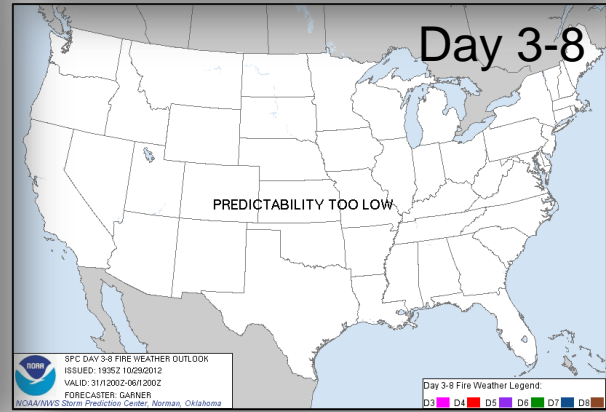
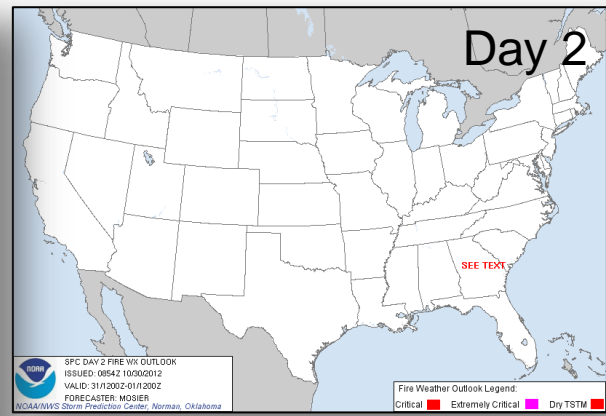
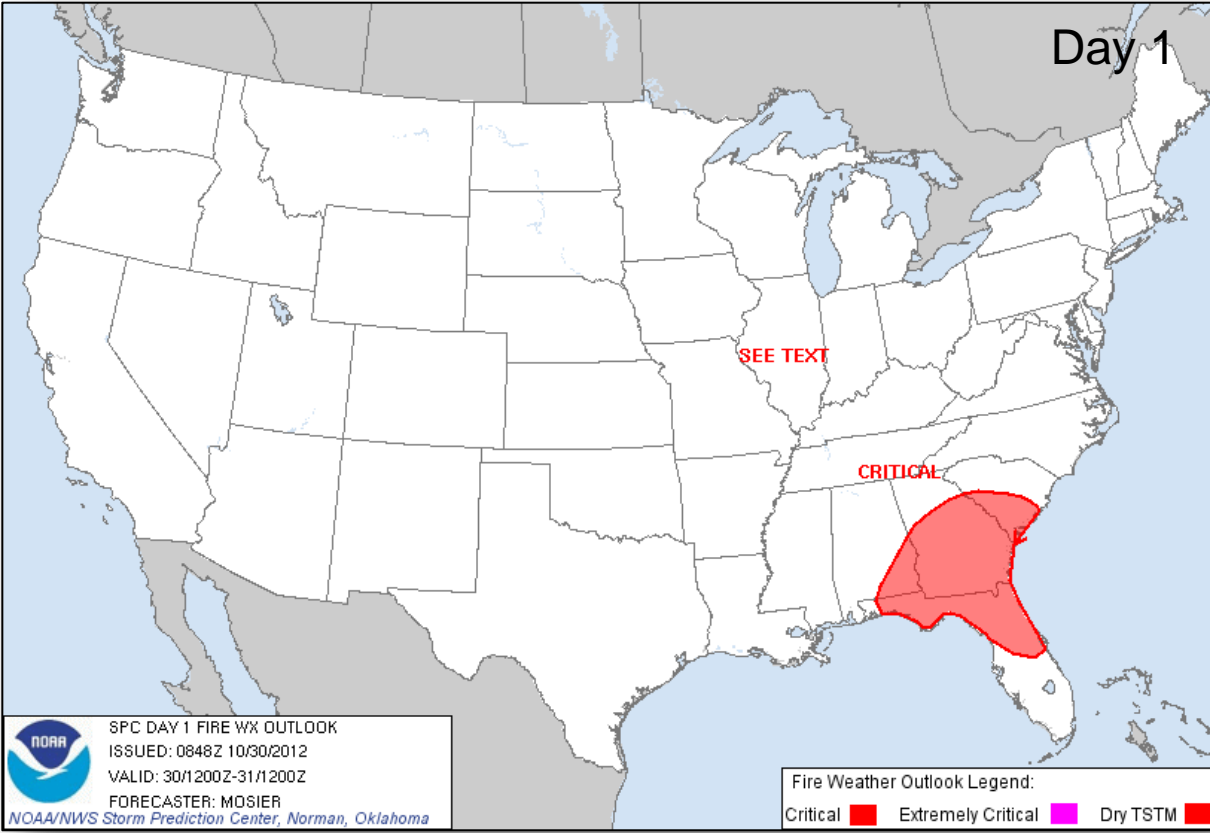




# Convective Outlook Days 1 – 3



# Critical Fire Weather Areas Days 1 – 8



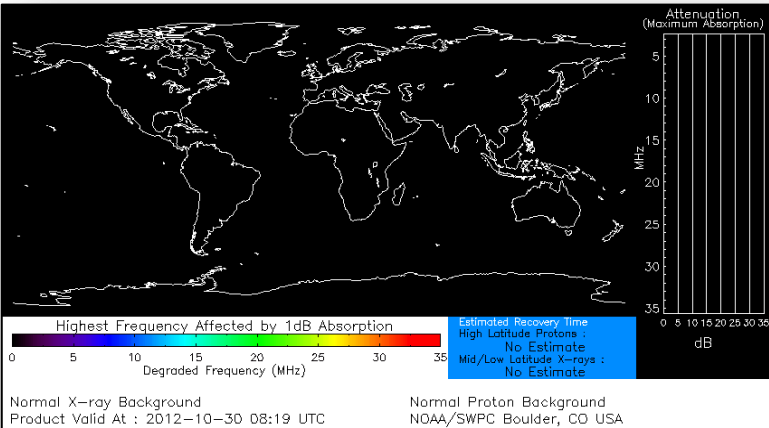


# Space Weather

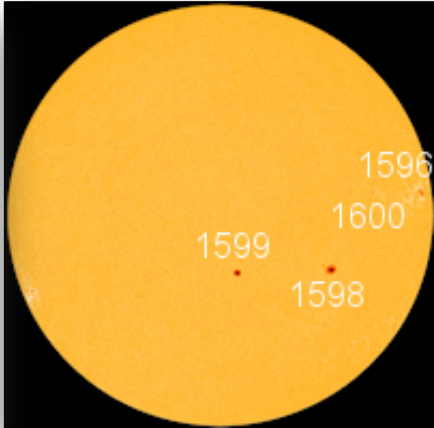


NOAA Scales Activity Range 1 (minor) to 5 (extreme)	Past 24 Hours	Current	Next 24 Hours
Space Weather Activity:	None	None	None
• Geomagnetic Storms	None	None	None
• Solar Radiation Storms	None	None	None
• Radio Blackouts	None	None	None

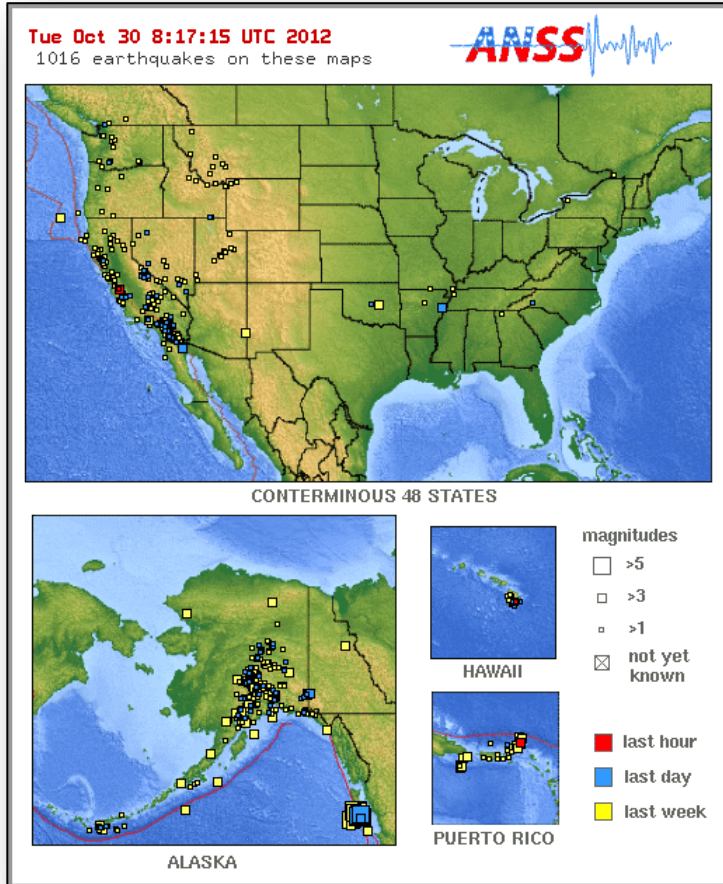
## HF Communications Impact



## Sunspot Activity



# Significant Earthquake Activity



- No significant activity

# OFDC Cadre Member Status



## Federal Coordinating Officer

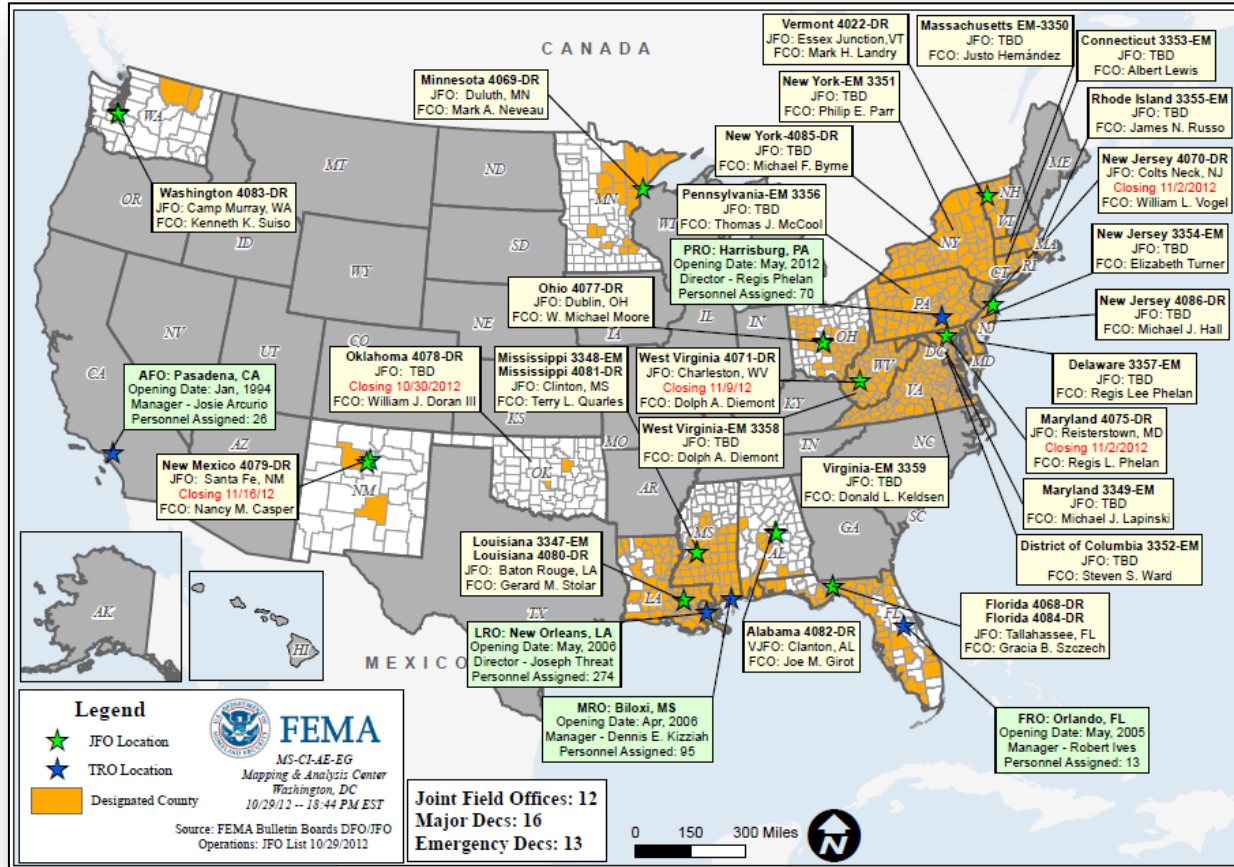
Deployed	Detailed	Available	Not Available	Total
29	1	3	2	35
Total Available	Type 1	Type 2	Type 3	Type 4
3*	3*	6	0	1

\* All Type 1 FCOs are available unless deployed to a Level 1 event

## Federal Disaster Recovery Coordinator

Positions	On Board	Available	Deployed	Pending Hire
10	5	3	2	0

# Open Field Offices as of October 30, 2012





# Disaster Requests & Declarations



Declaration Requests in Process		Requests APPROVED (since last report)	Requests DENIED (since last report)
<b>3</b>	<b>Date Requested</b>	<b>5</b>	<b>0</b>
UT – DR Severe Storms and Flooding	October 5, 2012		
NE – DR (Appeal) Region 24 Fire Complex	October 18, 2012		
DE – EM Hurricane Sandy	October 28, 2012	<b>October 29, 2012</b>	
WV – EM Hurricane Sandy	October 29, 2012	<b>October 29, 2012</b>	
VA – EM Hurricane Sandy	October 29, 2012	<b>October 29, 2012</b>	
NH – EM Hurricane Sandy	October 29, 2012		
NY – DR Hurricane Sandy	October 29, 2012	<b>October 30, 2012</b>	
NJ – DR Hurricane Sandy	October 29, 2012	<b>October 30, 2012</b>	

# MCOV Fleet / Deployment Status



MCOV FLEET STATUS						MCOV DISASTER SUPPORT DEPLOYMENTS					
Location	Units Assigned	Available FMC	Deployed Committed	PMC	NMC	DR-State	OPCON	En Route	Unit Prep	Open Request	Notes:
DC Atlanta	21	2	17		2	DR-4080-LA	3				
DC Cumberland	10	1	8		1	ISB-Westover	4				
DC Ft Worth	14	2	10		2	ISB-NJ	2				
DC Moffett	6	6				Long Island NY	1				
Holliston, MA	1	0	1			Standby Frederick	6	18	2		In route units instructed to cease travel if wind rain is safety issue.
Denver, CO	2	2									
Bothell, WA	2	2									
<b>TOTAL</b>	<b>56</b>	<b>15</b>	<b>36</b>	<b>0</b>	<b>5</b>	<b>TOTAL</b>	<b>16</b>	<b>18</b>	<b>2</b>	<b>0</b>	
Included in above totals, units in route for turn-in.											
Fully Mission Capable									51		
Partially Mission Capable									0		
Non-Mission Capable									5		
<b>Total Not Deployed</b>									<b>20</b>		

Data as of: 10/29/12 @ 1500

# IMAT Status



National Teams					
Team	Status	Team	Status	Team	Status
BLUE (East)	NYC	WHITE (Central)	MA	RED (West)	NJ
Regional Teams					
Team	Status	Team	Status	Team	Status
Region I	RI	Region V	MD	Region IX-1	VT
Region II	NY	Region VI-1	LA	Region IX-2	
Region III	DE/PA	Region VI-2	VA	Region X	WA
Region IV-1	NC	Region VII	NJ		
Region IV-2	NH	Region VIII	CT		

= Available/Mission Capable
 
 = Assigned/Deployed
   
 = Available/Partially Mission Capable
 
 = Out-of-Service

# Urban Search & Rescue



FEMA

INCIDENT SUPPORT TEAMS (Red-White-Blue) – Monthly On Call Rotation											
JAN	FEB	MAR	APR	MAY	JUN	JUL	AUG	SEP	OCT	NOV	DEC
WEST				CENTRAL				EAST			
Team	Status	Team	Status	Team	Status	Team	Status				
CA-TF1	Available	AZ-TF1	Alerted	FL-TF1	Available						
CA-TF2	Alerted	CO-TF1	Alerted	FL-TF2	Alerted						
CA-TF3	Available	IN-TF1	Deployed	MA-TF1	Deployed						
CA-TF4	Available	MO-TF1	Deployed	MD-TF1	Deployed						
CA-TF5	Available	NE-TF1	Available	NY-TF1	Unavailable						
CA-TF6	Alerted	NM-TF1	Non-operational	PA-TF1	Unavailable						
CA-TF7	Available	NV-TF1	Conditionally Available	VA-TF1	Deployed						
CA-TF8	Available	TN-TF1	Deployed	VA-TF2	Deployed						
WA-TF1	Alerted	TX-TF1	Available	OH-TF1	Deployed						
		UT-TF1	Available								

= Available/Mission Capable     
  = Assigned/Deployed  
 = Available/Partially Mission Capable     
  = Out-of-Service

# RRCC / Regional Watch Center Status



Region	RRCC	Regional Watch Center
I	Level I	Maynard MOC (24/7)
II	Level I	24/7
III	Level I	Enhanced Watch 24/7
IV	Watch/Steady State	24/7
V	Level III (24/7)	24/7
VI	Watch/Steady State	Denton MOC (24/7)
VII	Level III (Monitoring 24/7)	24/7
VIII	Level III	Denver MOC (24/7)
IX	Watch/Steady State	24/7
X	Watch/Steady State	Bothell MOC (24/7)

# National Team Status



Team/Status	Current Location	Remarks
National Watch Center	Washington, DC	Watch/Steady State
NRCC	Washington, DC	Level I (24/7)
HLT	Miami, FL	Activated
DEST	Washington, DC	Not Activated
Mission Capable	Partially Mission Capable	Not Mission Capable



# FEMA

**FEMA's mission is to support our citizens and first responders to ensure that as a nation we work together to build, sustain, and improve our capability to prepare for, protect against, respond to, recover from, and mitigate all hazards.**