



FEMA

Daily Operations Briefing

October 28, 2012

As of 8:30 a.m. EDT

Significant Activity: Oct 27 – 28

Significant Events:

- Hurricane Sandy / Major East Coast Storm
- Magnitude 7.7 earthquake off coast of BC & AK

Tropical Activity:

- Atlantic – Hurricane Sandy
- Eastern Pacific – Area 1 – MEDIUM (50%) chance
- Central Pacific – No tropical cyclones expected through Monday morning
- Western Pacific – No activity affecting U.S. territories

Significant Weather:

- Heavy rain – Southeast & Mid-Atlantic coasts
- Below normal (10-25 degrees) temps – Northern High Plains to Southern Plains
- Heavy snow – Higher elevations of New York
- Hurricane Warnings – East Coast
- Critical Fire Weather Areas / Red Flag Warnings: Florida Panhandle
- Space Weather: None

Declaration Activity: Maryland Request for Emergency Declaration

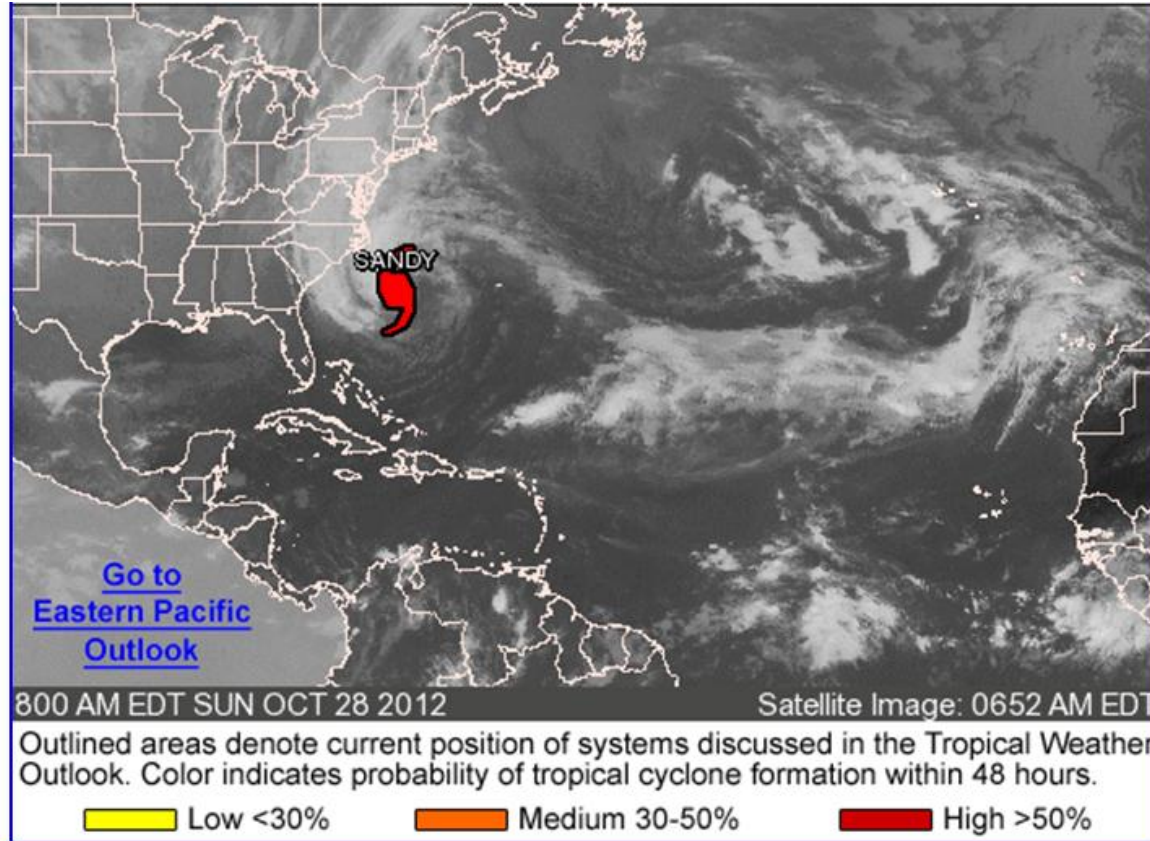
Significant Earthquake Activity



M7.7 Earthquake off British Columbia/Alaska

- 11:04 p.m. EDT, October 27, 2012
- 85 miles S of Sitka, AK
- Magnitude 7.7 earthquake
- Multiple aftershocks magnitude 4.3 – 5.8
- Waves of as much as 2 ft observed
- Hawaii:
 - Tsunami Advisory remains in effect
 - EOC partially activated with an LNO
 - Evacuation orders lifted
 - FEMA Region IX RRCC de-activated
- West Coast/AK:
 - Tsunami Advisory cancelled
 - State EOC's not activated
 - Region X RRCC did not activate
- No major damage, fatalities or injuries reported

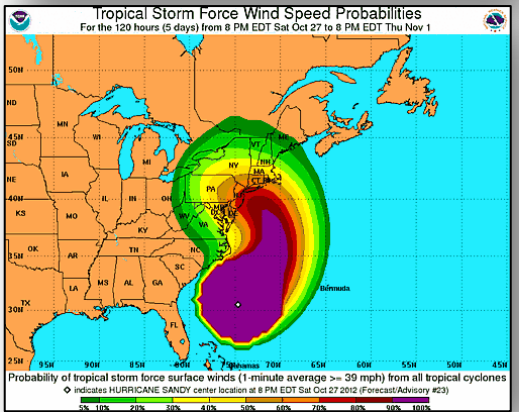
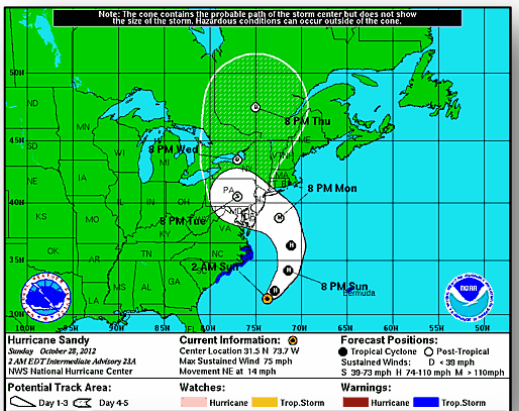
Atlantic – Tropical Outlook



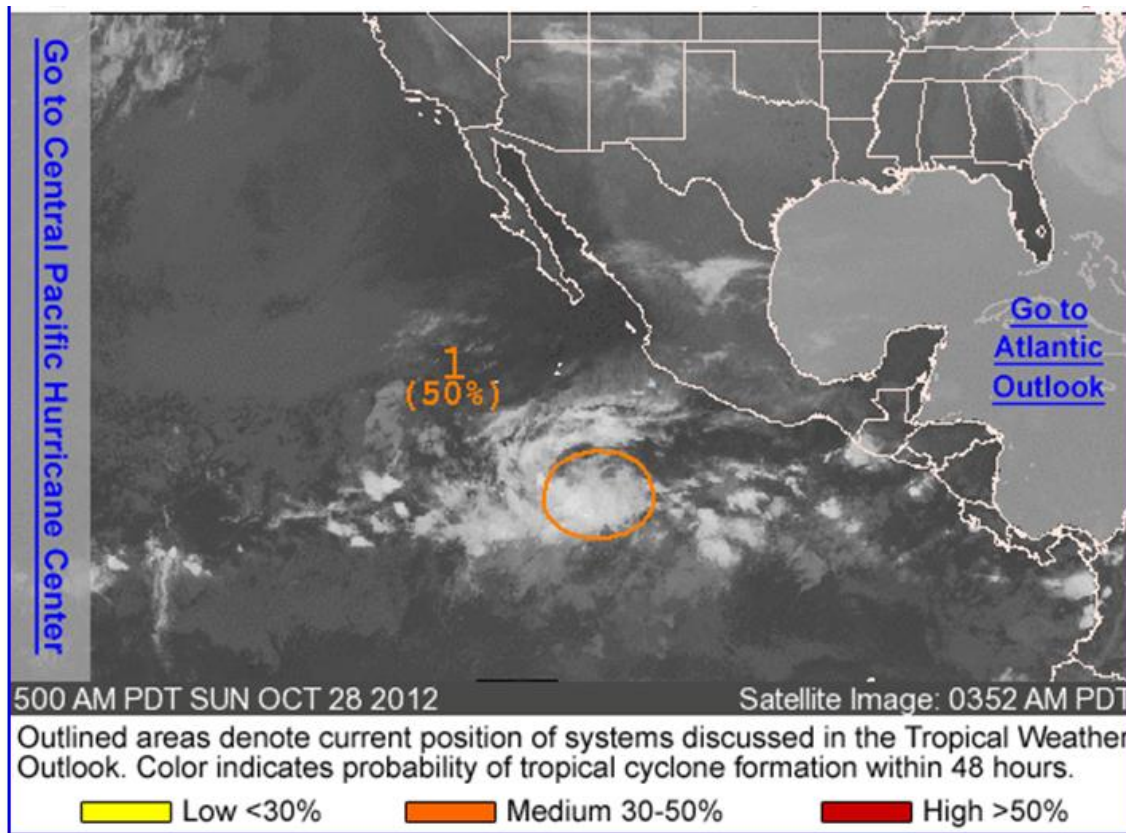
Atlantic – Hurricane Sandy

As of 5:00 a.m. EDT

- 395 miles E of Charleston, SC; 275 miles SSE of Cape Hatteras, NC
- Moving NE at 13 mph
- This general motion expected to continue through today
- Turn N then turn NW forecast on Monday
- Forecast to move parallel to SE U.S. coast today and tonight; approach Mid-Atlantic states by Monday night
- Max sustained winds 75 mph
- Little change in strength forecast next couple of days
- Hurricane force winds extend 105 miles; Tropical Storm force winds extend 520 miles
- TS Warnings continue for NC
- Rainfall totals of 3- 6 inches expected over far northeastern NC; 4- 8 inches over portions of Mid-Atlantic States, including DelMarVa peninsula; 1-3 inches from NY to New England
- Storm surge of 1 - 3 feet possible south of Surf City, NC; 4-6 feet SE VA and Delmarva including lower Chesapeake Bay



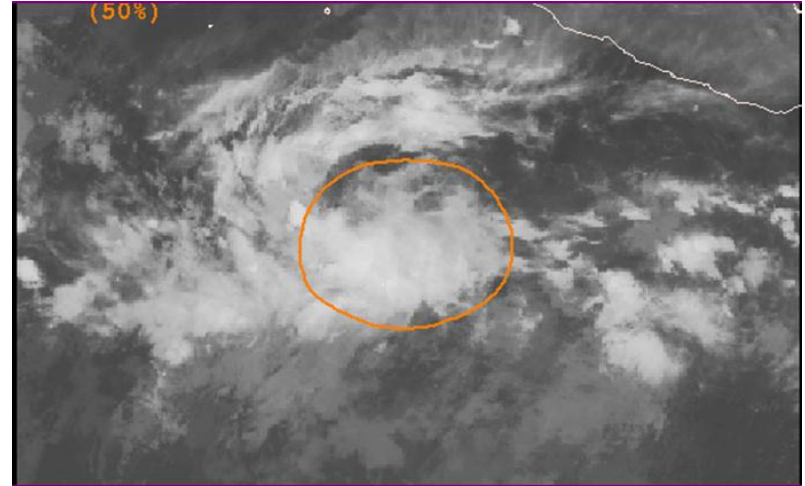
Eastern Pacific – Area 1 (Invest 98E)



Eastern Pacific – Area 1

As of 8:00 a.m. EDT

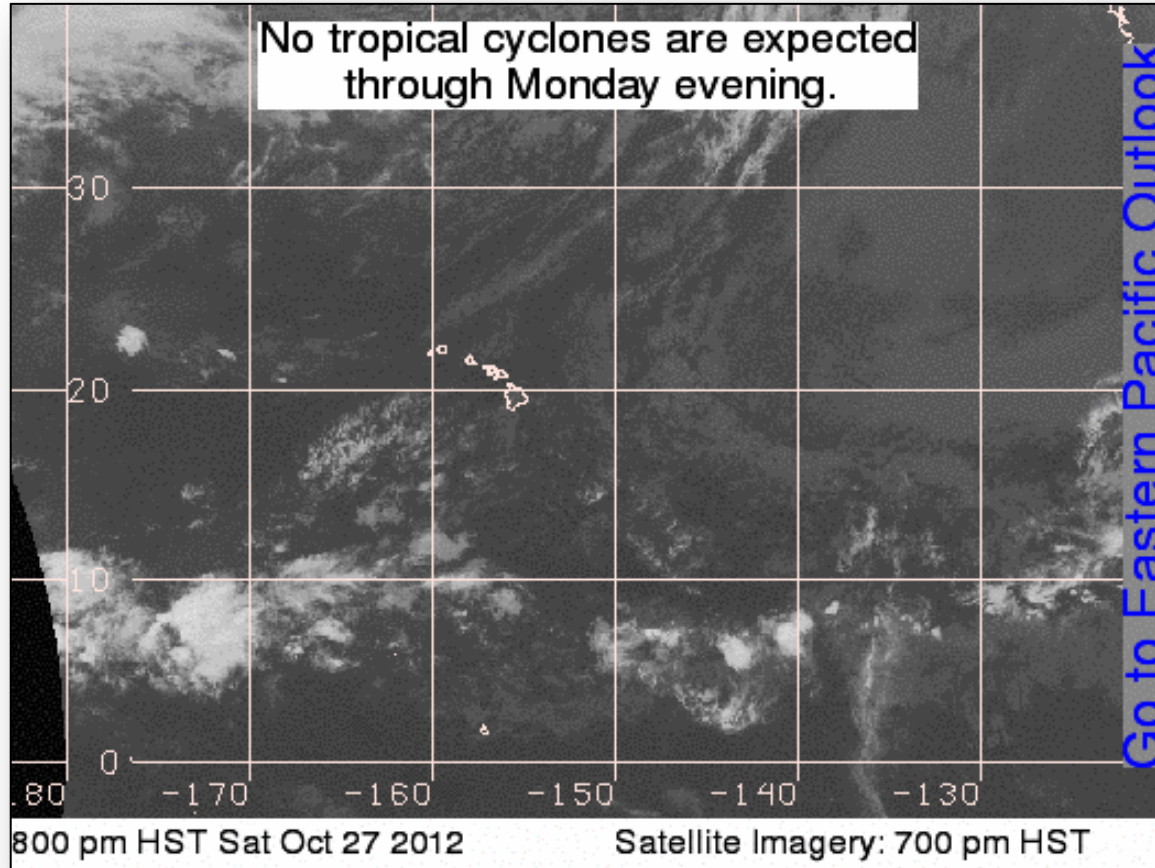
- 500 miles SSW of Manzanillo, Mexico
- Moving WNW or NW at 10-15 mph
- Some gradual development possible next couple of days
- MEDIUM (50%) chance of becoming tropical cyclone next 48 hours



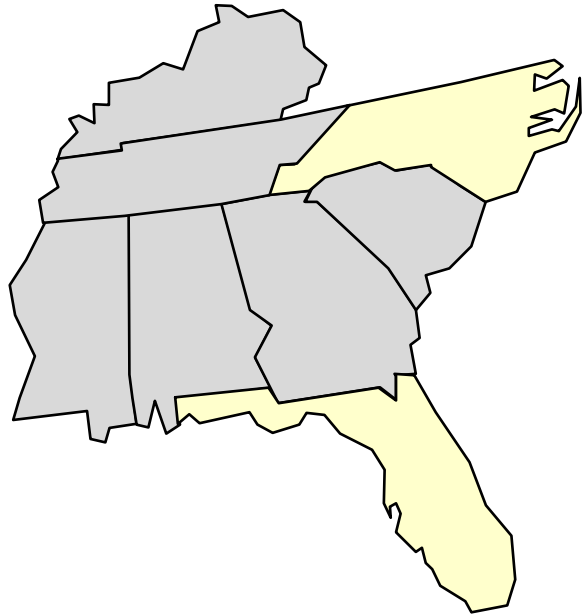
Central Pacific – Tropical Outlook



FEMA



Hurricane Sandy– Region IV



 States Activated / Enhanced Readiness

Regional Response

- RRCC at Level III (Incident Monitoring)

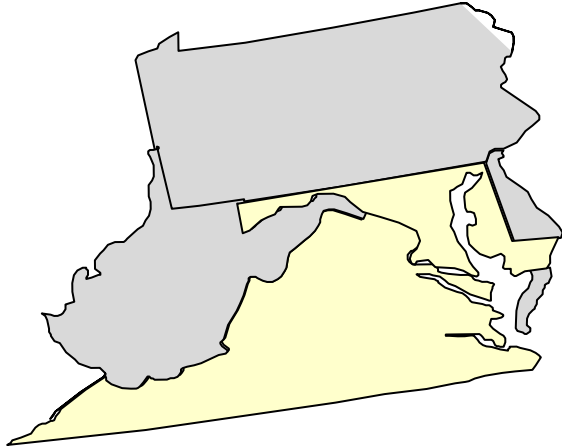
Regional IMAT deployments

- IMAT deployed to NC
- Additional IMAT prepared to deploy to SC, if necessary

State Impacts/ Response

- ▲ FL State EOC: Monitoring (Level III)
- ▲ NC EOC: Full Activation 24/7 (Level I); NC Governor declared State of Emergency
- All other State EOCs at Normal Operations

Hurricane Sandy – Region III



 States Activated / Enhanced Readiness

Regional Response

- RWC at Enhanced Watch
 - ▲ RRCC at Level II (Partial Activation)
- LNOs deployed to VA, MD, & PA
- Non-disaster staff will telework on Mon & Tues, Oct 29 & 30
- RVII DCE deployed to Baltimore, MD
- RVI DCE deployed to Richmond, VA
- USGS deployed field crew to Delmarva Peninsula

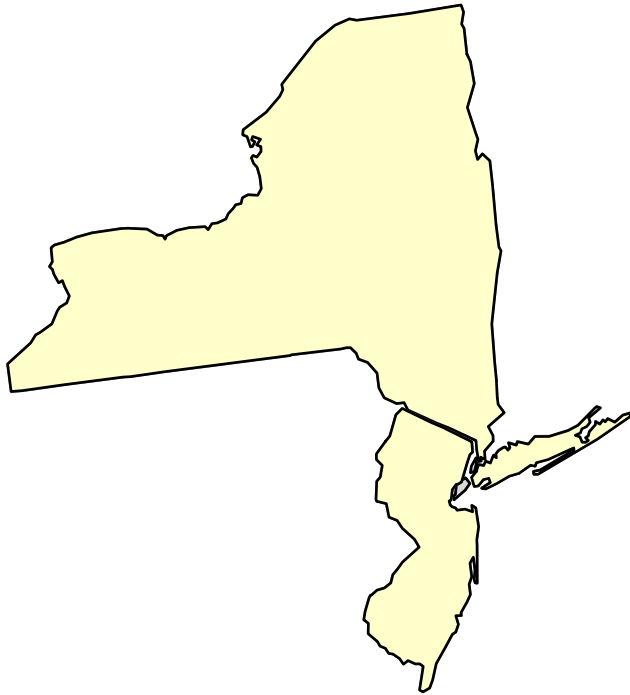
Regional IMAT deployments

- RIII IMAT 1 deploying to PA
- RIII IMAT 2 deploying to DE
- RV IMAT deploying to MD
- RVI IMAT deployed to VA

State Impacts/ Response

- State of Emergency declared for VA and MD; PA issued Emergency Proclamation
- VA EOC at Increased Readiness (Hurricane Condition III)
- MD EOC at Enhanced (Level III)
- PA EOC at Enhanced
 - ▲ DC EOC will activate at 4p.m. on Sunday, Oct 28; Mayor declared State of Emergency, October 26, 2012
- WV EOC at normal operations

Hurricane Sandy – Region II



 States Activated / Enhanced Readiness

Regional Response

- ▲ RRCC at Level II (Partial Activation) with ESFs
1,3,6,7,8,12,13,14,15 & DCE (Level I (full activation) at 1:00 p.m. EDT today)
- ▲ Mandatory evacuation is in effect for NJ
 - LNOs deployed to NJ, NYC & NY (Albany)
 - ISB established at Joint Base McGuire/Dix/Lakehurst

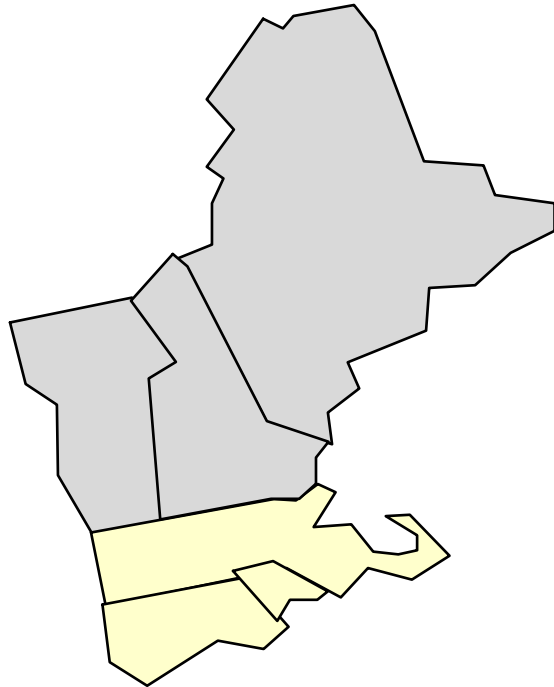
Regional IMAT deployment

- RII IMAT deployed to NY EOC (Albany)
- RVII IMAT deployed to N.J (Earle)

State Impacts/ Response

- ▲ State of Emergency declared for NY and NJ
 - NY State EOC at Full Activation (Level I with possible NRF coordination)
 - NJ ROIC at Limited EOC Activation (Level III)
 - NYC OEM at Full Activation (Level I)

Hurricane Sandy – Region I



 States Activated / Enhanced Readiness

Regional Response

- RRCC at Level II with select ESFs
 - Level I (Full Activation) w/all ESFs, DOD & NWS on Monday, Oct 29
- LNOs deployed to MA and RI EMAs
- Region IX DCE deploying to Region I
- Commodities will be staged at ISB Westover AFB, MA

Regional IMAT deployment

- RI IMAT deployed to RI
- RVIII IMAT deployed to NH
- RIX IMAT deployed to VT

State Impacts/ Response

- ▲ CT EOC at 24/7 operations; state of emergency declared
- ▲ MA EOC full activation; state of emergency declared
- ▲ RI EOC at Level III 24/7 operations
- ▲ VT EOC will go to full activation on Oct 29
- ▲ ME declared limited emergency for power restoration

Hurricane Sandy – Response



FEMA Headquarters Response:

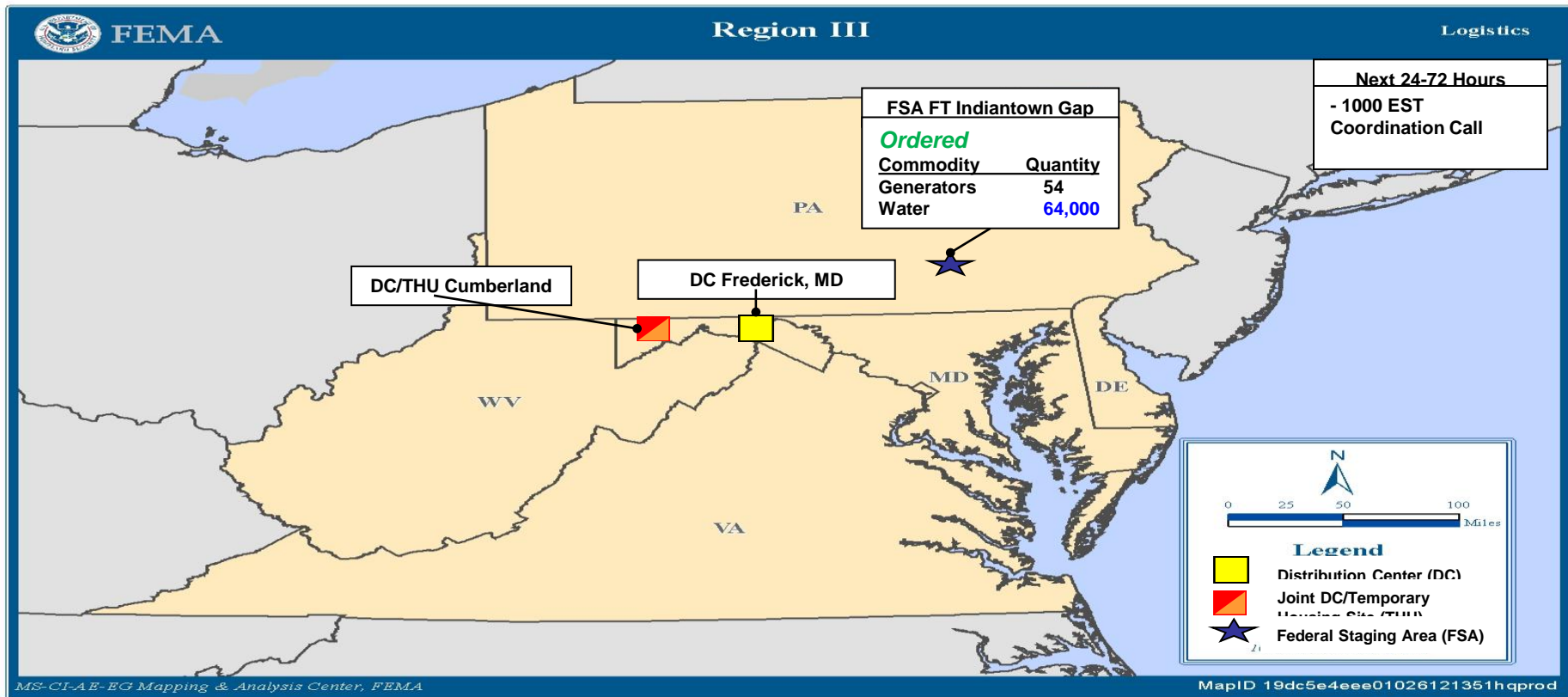
- NWC at Watch/Steady State
- NRCC activated to Level II (24/7)
- National IMATs
 - IMAT-Blue deployed to Connecticut (Region I)
 - IMAT-Red deployed to New Jersey (Region II)
 - IMAT-White deployed to Massachusetts (Region I)
- ▲ USAR Red Incident Support Team deploying to Herndon, VA; arrival 8:00 a.m. EDT, Oct 29

FEMA Logistics:

- Pre-designated Incident Support Bases (ISBs):
 - Westover Air Reserve Base (ARB), Massachusetts; one Alpha or Bravo Initial Response Resource package (IRR), as required
 - Joint Base McGuire/Dix/Lakehurst, New Jersey; one Alpha IRR pack

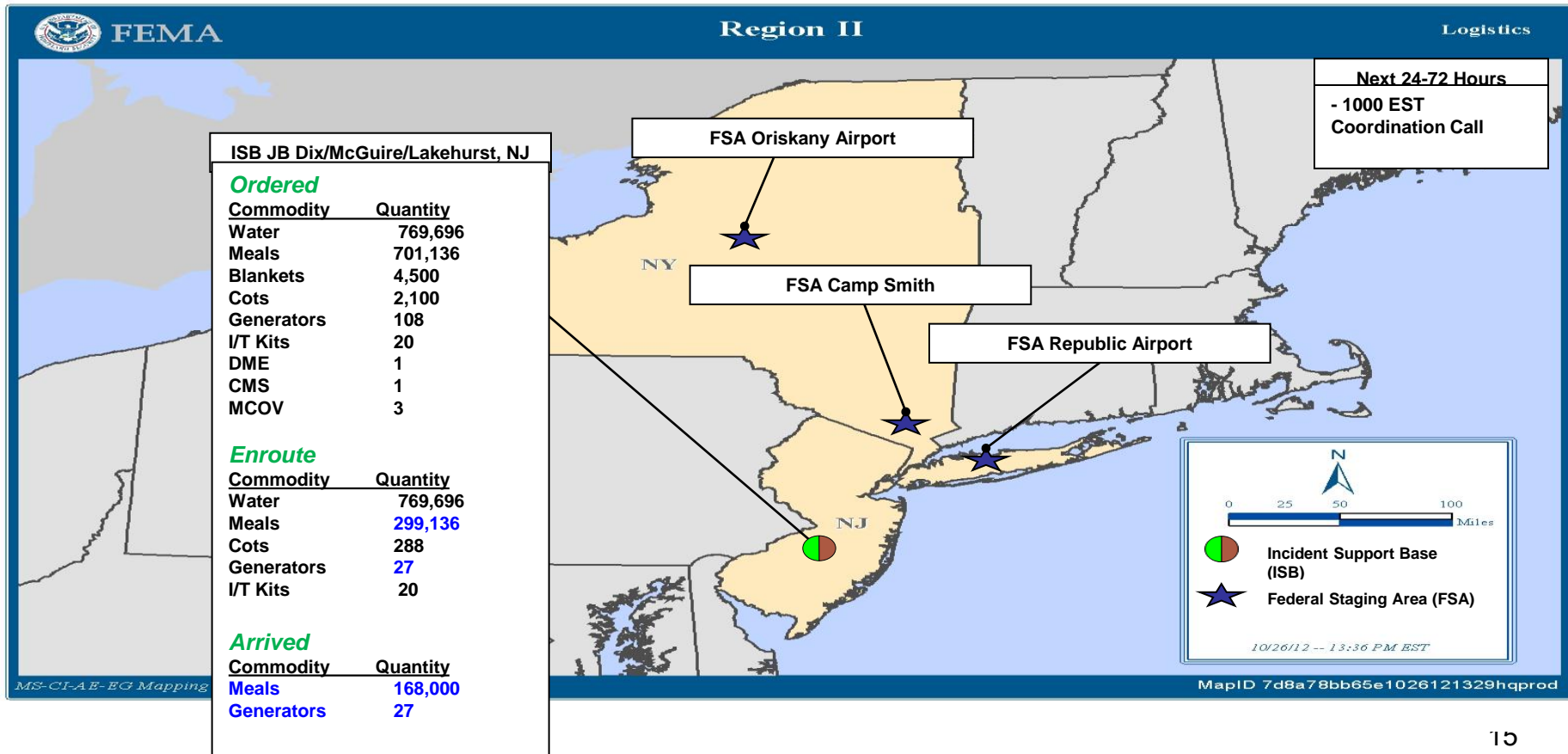
FEMA Region III Hurricane SANDY Sustainment

as of 10/28/12 0100 EDT



FEMA Region II Hurricane SANDY Sustainment

as of 10/28/12 0100 EDT

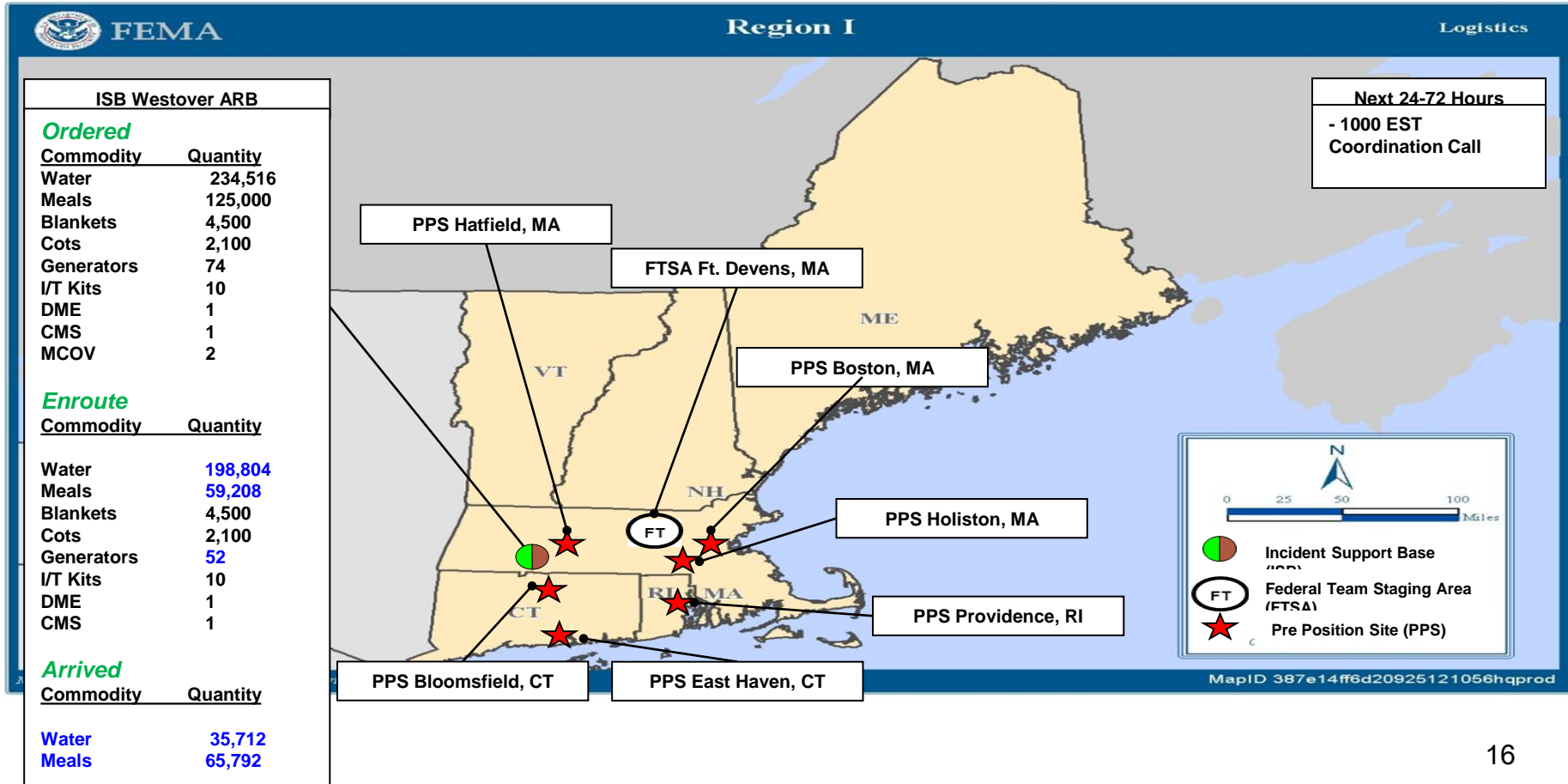


MS-CI-AE-EG Mapping

MapID 7d8a78bb65e1026121329hqprod

FEMA Region I Hurricane SANDY Sustainment

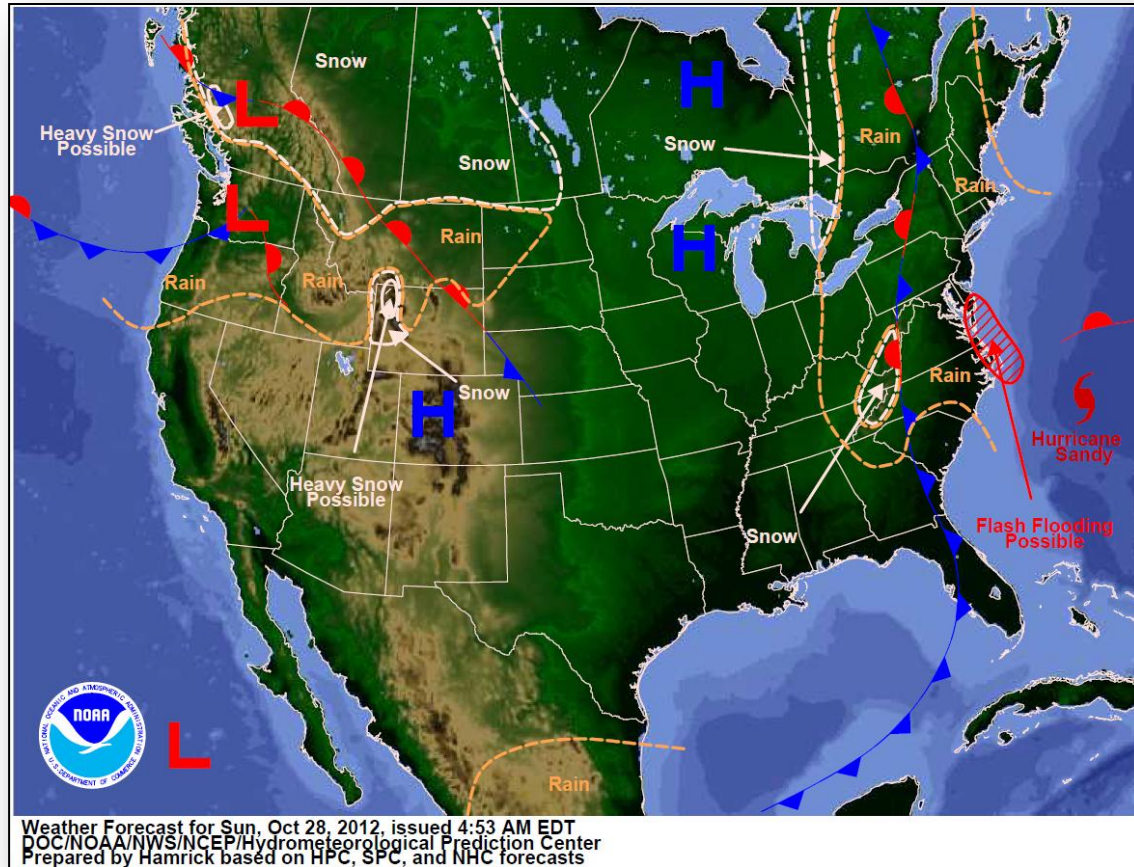
as of 10/28/12 0100 EDT



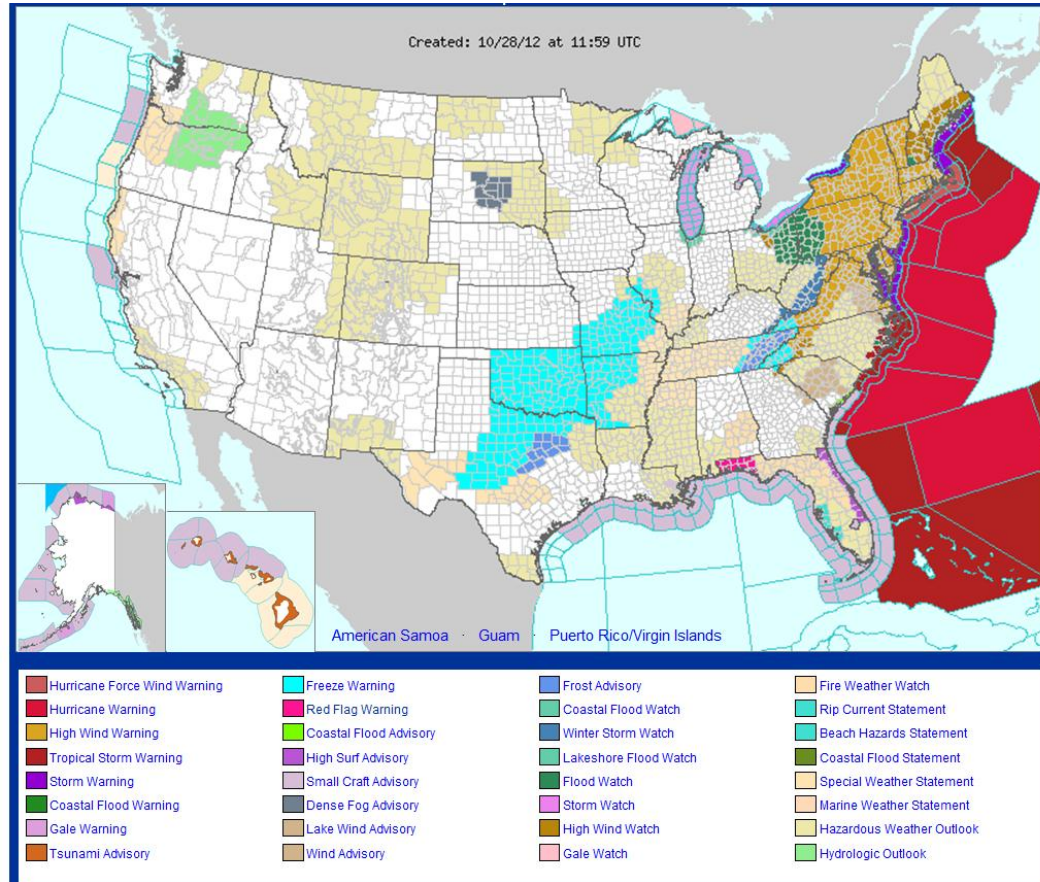
National Weather Forecast



FEMA



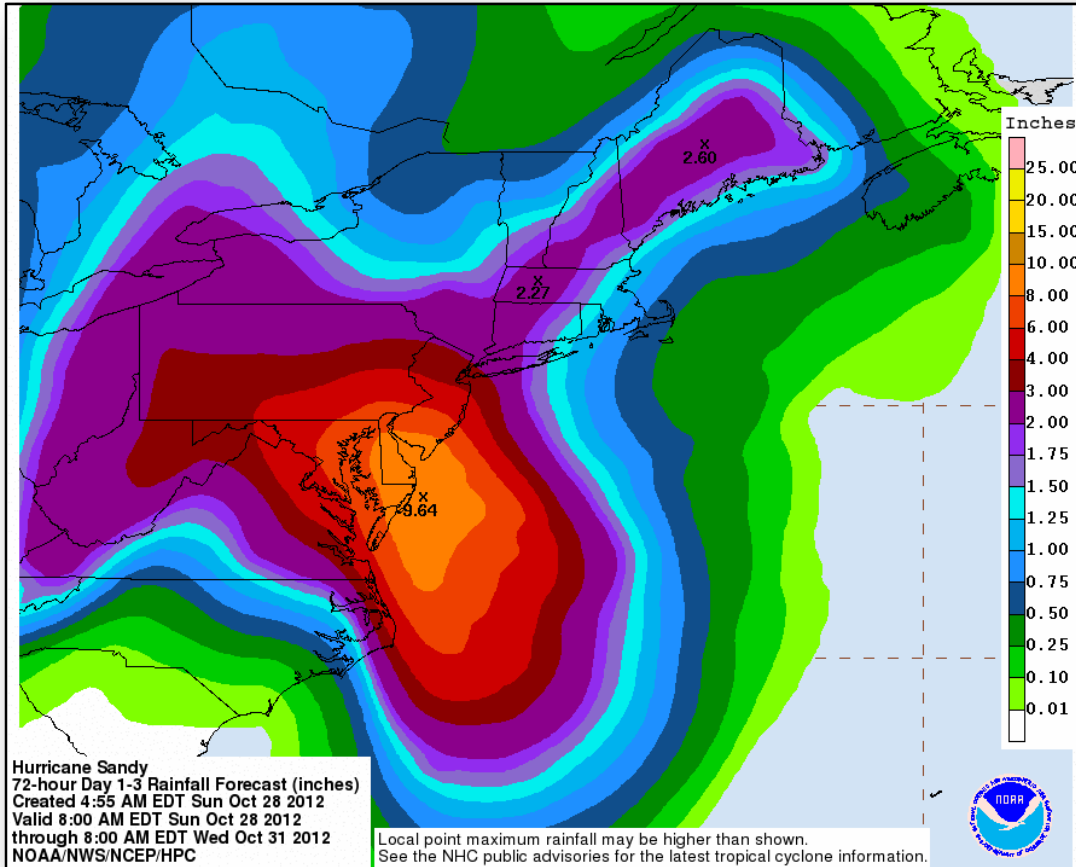
Active Watches/Warnings



Tropical Storm Sandy Precipitation Forecast



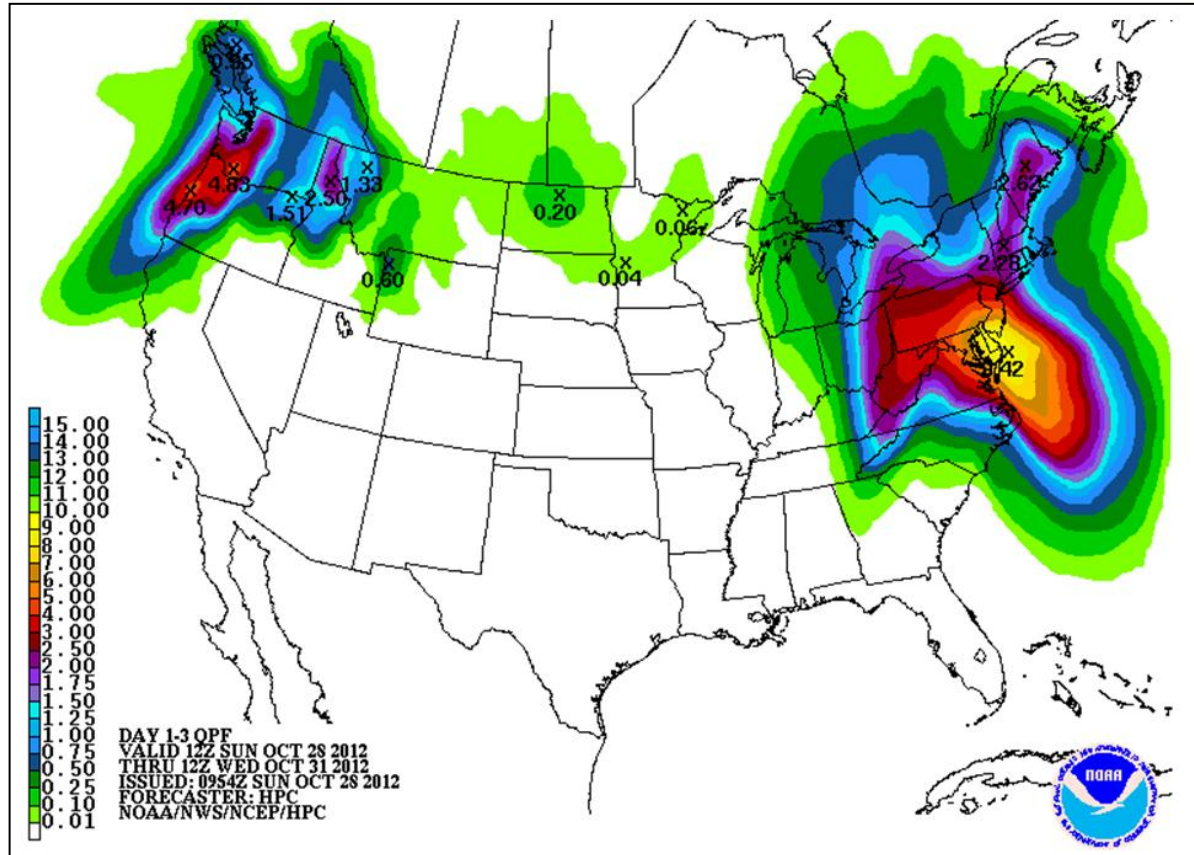
FEMA



Precipitation Forecast Days 1 – 3



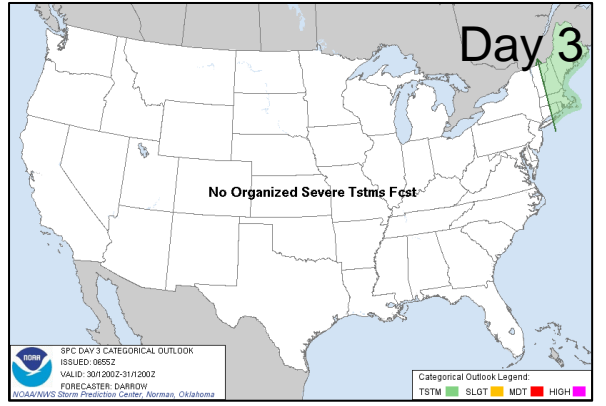
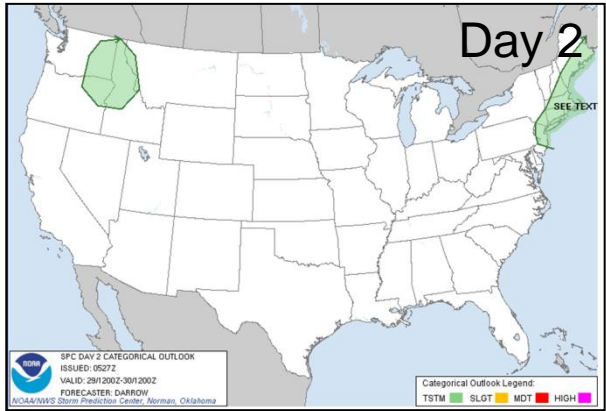
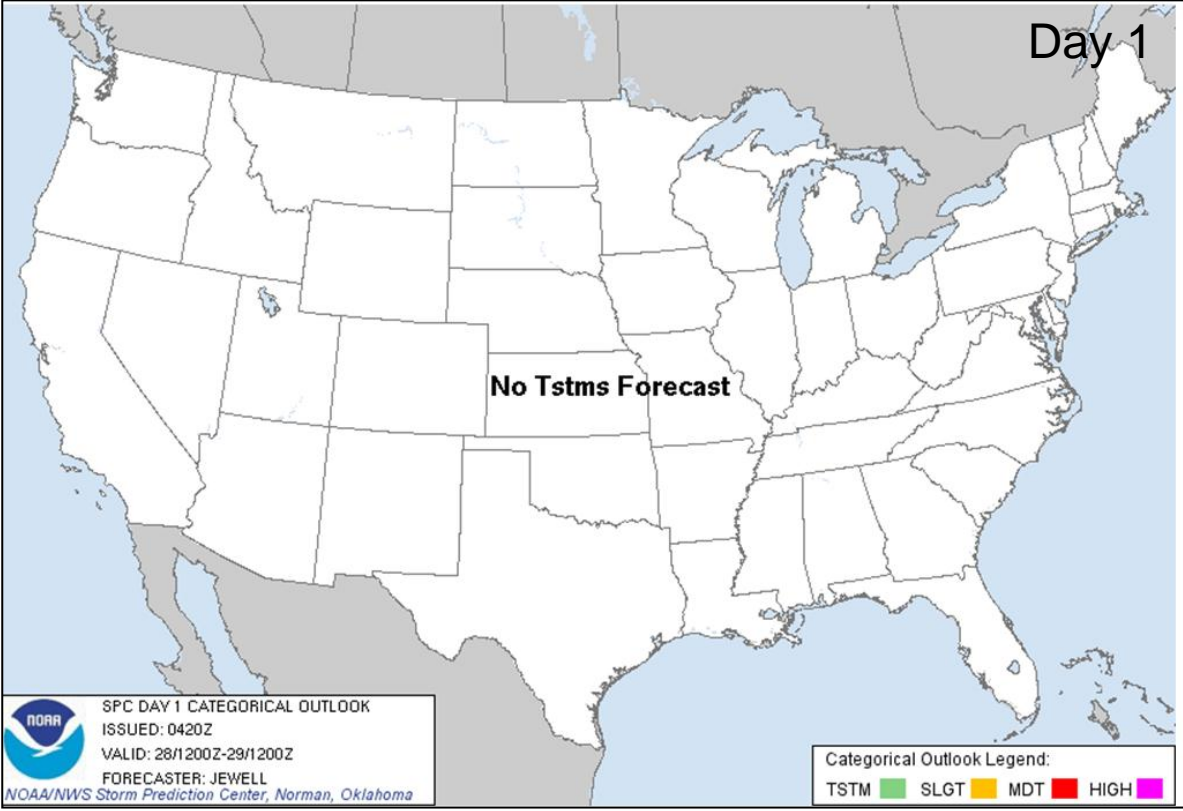
FEMA



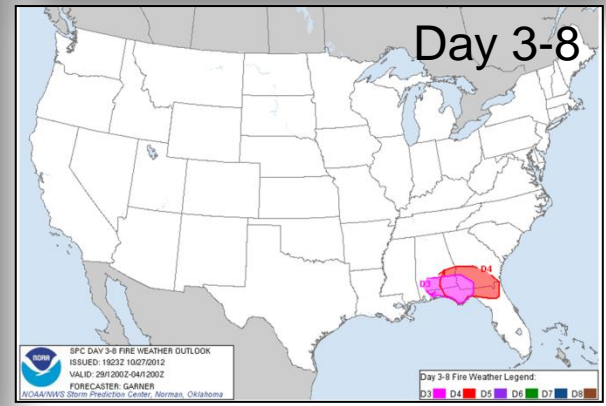
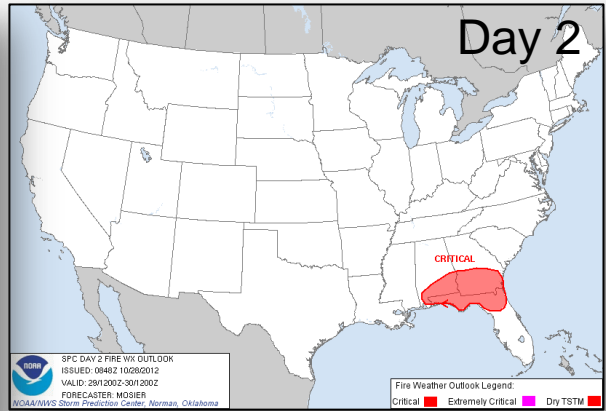
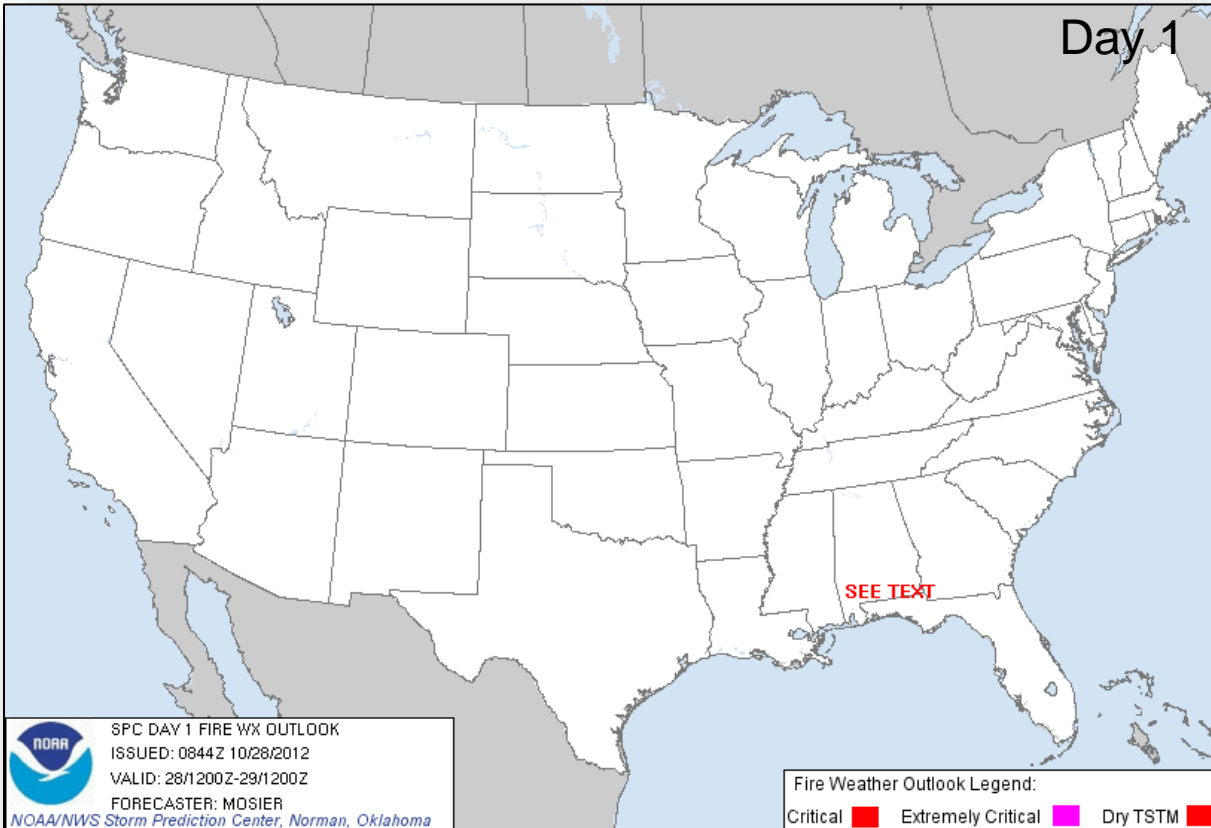
River Flood Outlook – 7 Day



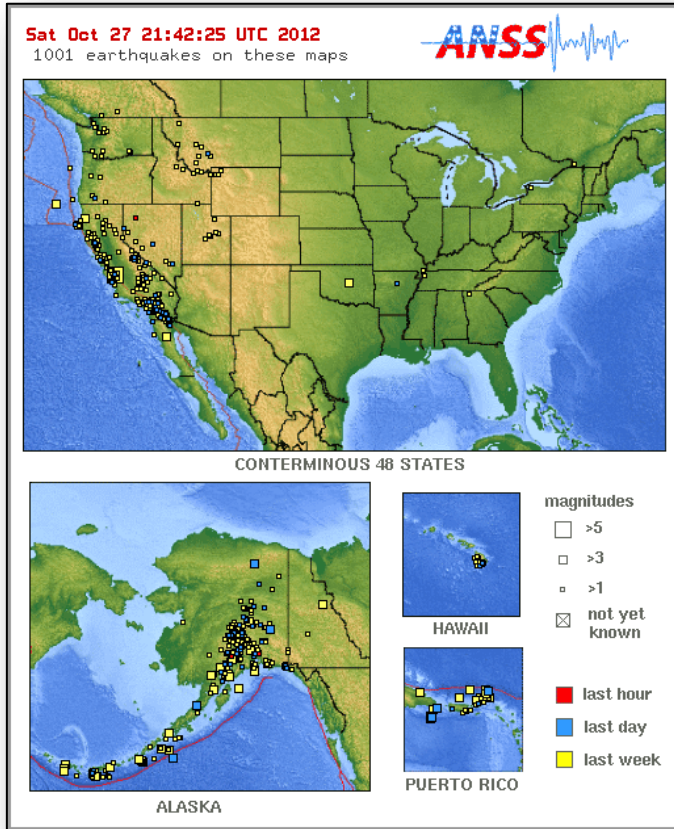
Convective Outlook Days 1 – 3



Critical Fire Weather Areas Days 1 – 8



Significant Earthquake Activity



- No significant activity

Disaster Requests & Declarations



Declaration Requests in Process		Requests APPROVED (since last report)	Requests DENIED (since last report)
3	Date Requested	0	0
UT – DR Severe Storms and Flooding	October 5, 2012		
NE – DR (Appeal) Region 24 Fire Complex	October 18, 2012		
MD – EM Hurricane Sandy	October 27, 2012		

OFDC Cadre Member Status



Federal Coordinating Officer

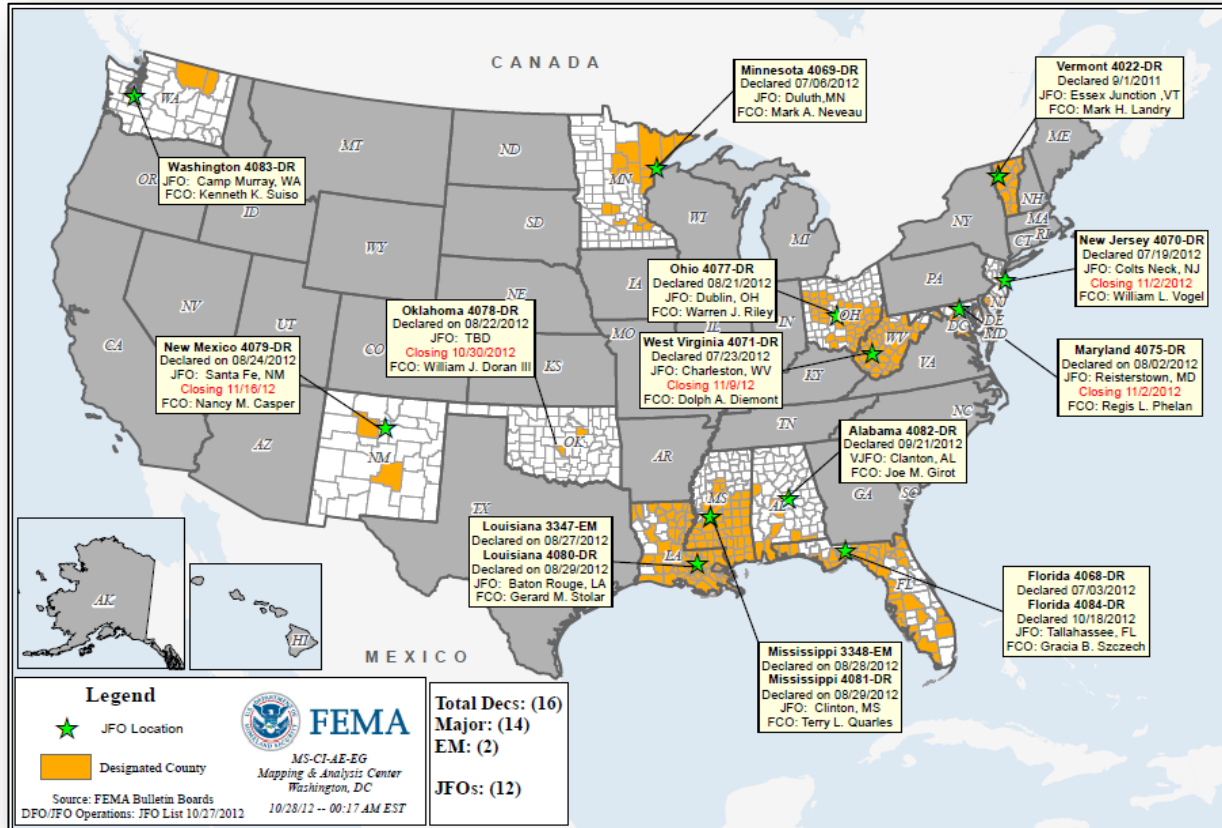
Deployed	Detailed	Available	Not Available	Total
29	1	3	2	35
Total Available	Type 1	Type 2	Type 3	Type 4
3*	3*	6	0	1

* All Type 1 FCOs are available unless deployed to a Level 1 event

Federal Disaster Recovery Coordinator

Positions	On Board	Available	Deployed	Pending Hire
10	5	3	2	0

Open Field Offices as of October 28, 2012

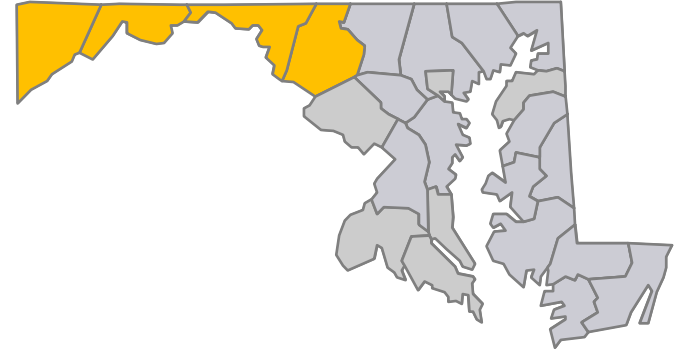


Emergency Declaration Request - Maryland



October 27, 2012:

- Emergency Declaration Request for State of Maryland
- For Hurricane Sandy from October 26 to November 7, 2012
- Emergency protective measures (Category B) for all counties and Independent City of Baltimore
- Snow assistance for Garrett, Allegany, Washington & Frederick counties



**Requested counties & City of Baltimore
for snow assistance**

**All counties & City of Baltimore for
emergency protective measures**

MCOV Fleet / Deployment Status



MCOV FLEET STATUS					
Location	Units Assigned	Available FMC	Deployed Committed	PMC	NMC
DC Atlanta	21	2	17		2
DC Cumberland	10	2	7		1
DC Ft Worth	14	5	8		1
DC Moffett	6	6			
Holliston, MA	1	0	1		
Denver, CO	2	2			
Bothell, WA	2	2			
TOTAL	56	19	33	0	4
Included in above totals, units in route for turn-in.					

MCOV DISASTER SUPPORT DEPLOYMENTS					
DR-State	OPCON	En Route	Unit Prep	Open Request	Notes:
DR-4080-LA	3				
ISB-Westover		2	2		
ISB-NJ		2	1		
Standby Frederick		3	20	2	Open ETA to sign for units 10/28 and 10/29
TOTAL	3	7	23	2	

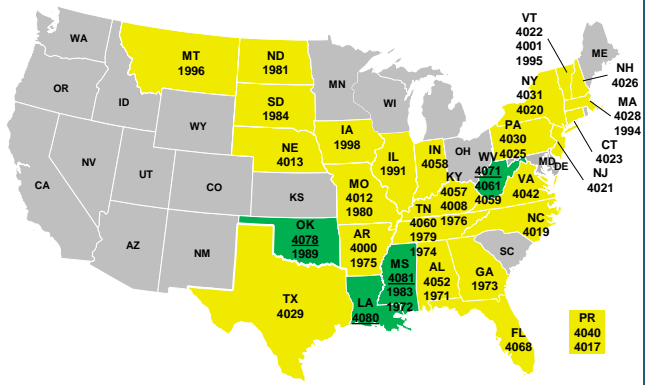
Fully Mission Capable	52
Partially Mission Capable	0
Non-Mission Capable	4
Total Not Deployed	23

Data as of: 10/28/12 @ 0630

Active IA Disasters - Referral Status & Awards



Active IA Disasters



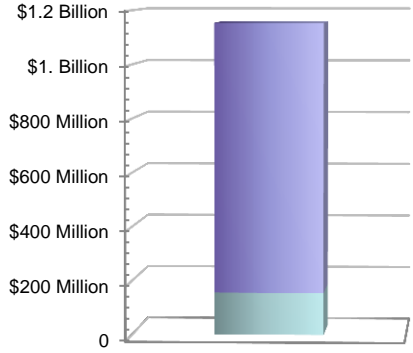
Legend

of DRs

- 4** Open Registration Period (60 days from Declaration, unless extended)
- 43** IHP Active – IHP Assistance period remains open (18 Months from Declaration)

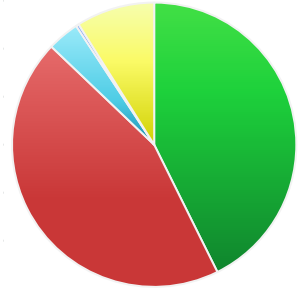
Total IHP Awards

Total Awards: 295,242
Total Max Grants: 8,114

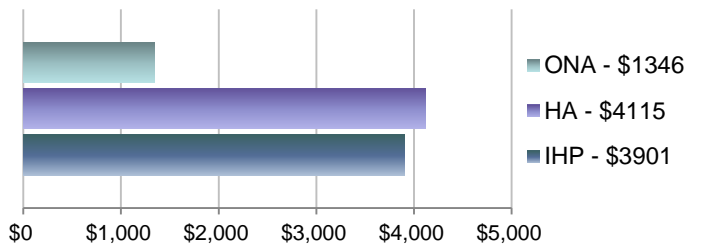


IHP Referral Status

Approved:	295,242
Ineligible:	307,579
Withdrawn:	25,056
Pending (FEMA):	2,054
Pending (Applicant):	61,515
Total Referrals:	691,446



Average IHP Awards



47 Total IHP Active Disasters (All information on this slide reflects data for these disasters)

IA Registration Statistics



Cumulative as of October 27, 2012 @ 1500

DR # - State	Registrations	Approved Applicants	Total HA Approved	Total ONA Approved	Total IHP Approved
4071 - WV	3,474	598	\$1,381,467	\$69,428	\$1,450,895
4078 - OK	784	375	\$6,126,830	\$624,079	\$6,750,909
4080 - LA	197,735	43,150	\$92,535,977	\$20,465,837	\$113,001,814
4081 - MS	25,198	6,347	\$12,960,524	\$2,440,238	\$15,400,762
Totals	227,191	50,470	\$113,004,799	\$23,599,582	\$136,604,380
24 Hour Change	+169	+83	+\$209,609	+\$51,816	+\$261,425

NPSC Call Data for October 25, 2012

Total NPSC Calls Answered (Helpline + Registration Intake)	3,862
Average time to answer call	32 seconds

Housing Inspection Statistics



Data as of October 27, 2012 @ 1500

DR # - State	Inspectors	Inspections Assigned	Inspections Completed	Inspection % Complete	Turnaround Time (Days)
4071 - WV	11	1,892	1,625	85.9%	1.9
4078 - OK	1	564	522	92.6%	2.1
4080 - LA	40	141,687	135,975	96.0%	3.6
4081 - MS	11	21,500	20,107	93.5%	2.9
TOTAL	63	165,643	158,229	95.5%	3.5
24 Hour Change	-12	+125	+466	+0.2%	-0.0

IMAT Status



National Teams					
Team	Status	Team	Status	Team	Status
BLUE (East)	CT	WHITE (Central)	MA	RED (West)	NJ
Regional Teams					
Team	Status	Team	Status	Team	Status
Region I	RI	Region V	MD	Region IX-1	VT
Region II	NY	Region VI-1	LA	Region IX-2	
Region III	DE/PA	Region VI-2	VA	Region X	WA
Region IV-1	NC	Region VII	NJ		
Region IV-2	Standby SC	Region VIII	NH		

= Available/Mission Capable

= Available/Partially Mission Capable

= Assigned/Deployed

= Out-of-Service

Urban Search & Rescue



FEMA

INCIDENT SUPPORT TEAMS (Red-White-Blue) – Monthly On Call Rotation											
JAN	FEB	MAR	APR	MAY	JUN	JUL	AUG	SEP	OCT	NOV	DEC
WEST				CENTRAL				EAST			
Team	Status	Team	Status	Team	Status	Team	Status				
CA-TF1	Available	AZ-TF1	Available	FL-TF1	Available						
CA-TF2	Available	CO-TF1	Available	FL-TF2	Available						
CA-TF3	Available	IN-TF1	Available	MA-TF1	Available						
CA-TF4	Available	MO-TF1	Available	MD-TF1	Available						
CA-TF5	Available	NE-TF1	Available	NY-TF1	Available						
CA-TF6	Available	NM-TF1	Non-operational	PA-TF1	Conditionally Available						
CA-TF7	Available	NV-TF1	Conditionally Available	VA-TF1	Available						
CA-TF8	Available	TN-TF1	Conditionally Available	VA-TF2	Available						
WA-TF1	Available	TX-TF1	Available	OH-TF1	Available						
		UT-TF1	Available								

= Available/Mission Capable
 = Assigned/Deployed
 = Available/Partially Mission Capable
 = Out-of-Service

RRCC / Regional Watch Center Status



Region	RRCC	Regional Watch Center
I	Level III	Maynard MOC (24/7)
II	Level II (Level I (full activation) at 1:00 p.m. EDT today)	24/7
III	Level II Level I on Oct 29	Enhanced Watch 24/7
IV	Level III	24/7
V	Watch/Steady State	24/7
VI	Watch/Steady State	Denton MOC (24/7)
VII	Level III (Monitoring 24/7)	24/7
VIII	Level III	Denver MOC (24/7)
IX	Watch/Steady State	24/7
X	Watch/Steady State	Bothell MOC (24/7)

National Team Status



Team/Status	Current Location	Remarks
National Watch Center	Washington, DC	Watch/Steady State
NRCC	Washington, DC	Level II (24/7)
HLT	Miami, FL	Activated
DEST	Washington, DC	Not Activated
Mission Capable	Partially Mission Capable	Not Mission Capable



FEMA

FEMA's mission is to support our citizens and first responders to ensure that as a nation we work together to build, sustain, and improve our capability to prepare for, protect against, respond to, recover from, and mitigate all hazards.