



# FEMA

## Daily Operations Briefing

October 14, 2012

As of 8:30 a.m. EDT

# Significant Activity: Oct 13-14



**Significant Events:** Tropical Storm Rafael

**Tropical Activity:**

- Atlantic –Tropical Storm Rafael
- Eastern Pacific – Tropical Storm Paul
- Central Pacific – No tropical cyclones expected through Monday night
- Western Pacific – Typhoon 22W (Prapiroon)

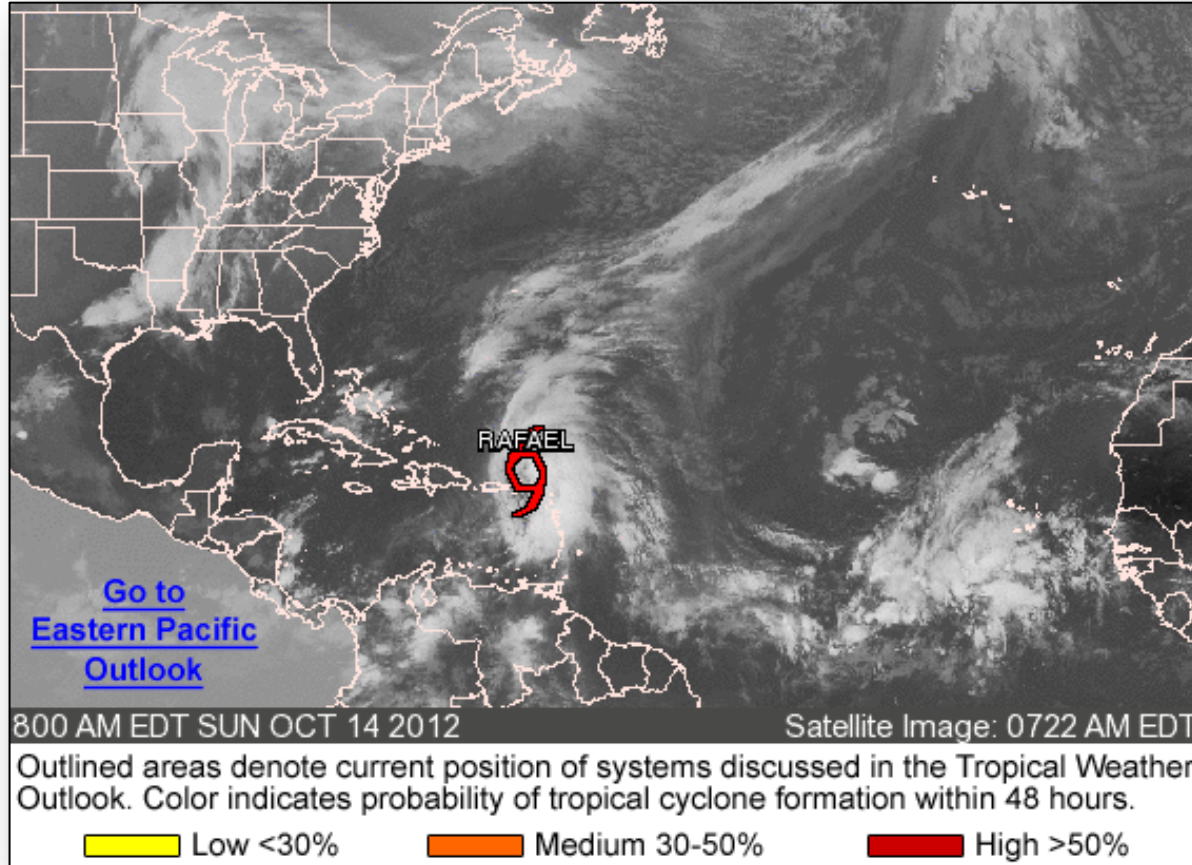
**Significant Weather:**

- Slight risk of severe thunderstorms – Ohio and Tennessee Valleys
- Heavy rain possible - Great Lakes and Pacific Northwest
- Critical Fire Weather Areas: None; Red Flag Warnings: None
- Space Weather: Past 24 hours: Minor – G1 storms occurred; Next 24: Minor – G1 storms expected

**Earthquake Activity:** No significant U.S. activity

**Declaration Activity:** Amendment No.15 to FEMA-4080-DR-LA

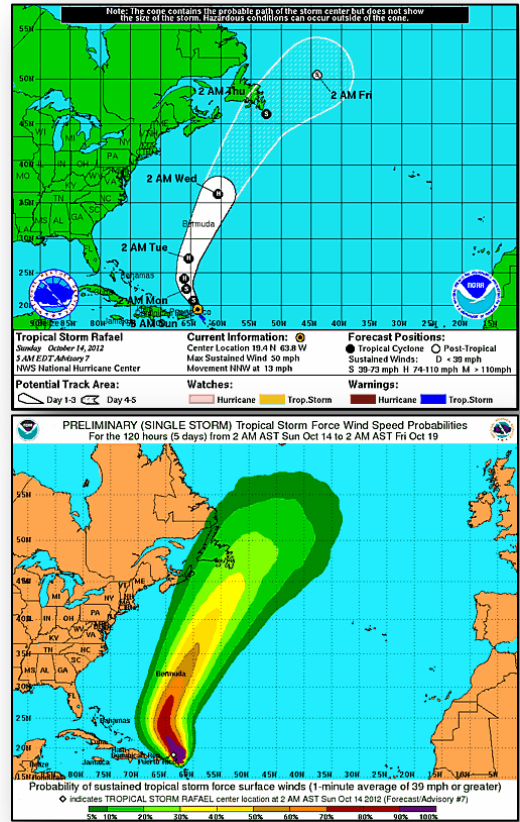
# Atlantic – Tropical Outlook



# Atlantic – Tropical Storm Rafael

As of 8:00 a.m. EDT

- 100 miles NNW of St. Martin
- Moving NNW at 12 mph
- Turn N expected Monday; center will move away from the USVI & Leeward Islands though tonight
- Max sustained winds 50 mph
- Strengthening forecast next 48 hours; could become hurricane by Monday
- Tropical storm force winds extend 175 miles
- Total rainfall 3 - 5 inches; isolated max amounts 10 inches over USVI
- Tropical storm warning for USVI & tropical storm watch for PR discontinued



# Tropical Storm Rafael Response



## **Federal Response:**

- Region II RRCC at Level III (Partial Activation) with ESF-5, IMAT and DCE at RRCC in Earle, NJ
- Select members of DCE and Region II IMAT deployed to St. Thomas, USVI
- Region II CAD operational with key staff
- Region II CAD deployed two LNOs to PREMA EOC

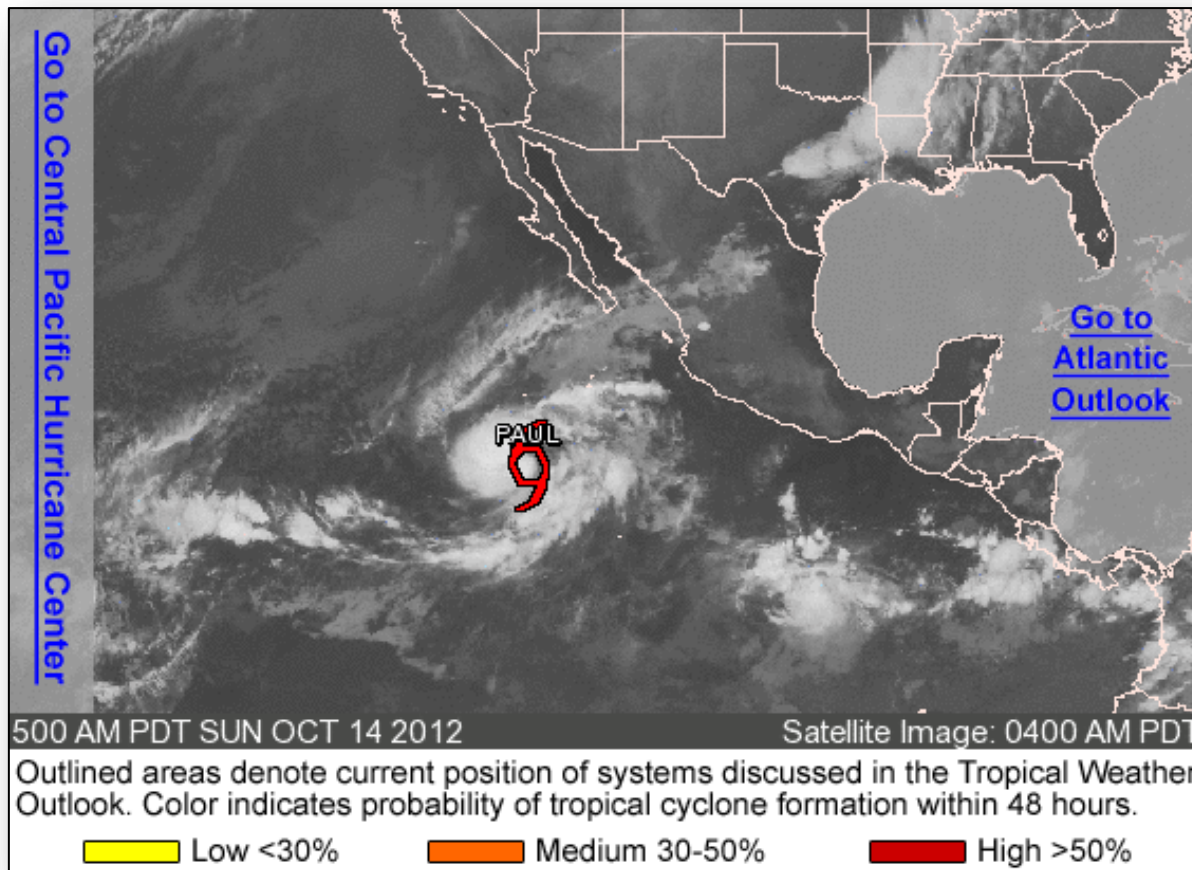
## **Territory Response:**

- VITEMA EOC returned to Normal Operations – no unmet needs
- PREMA EOC at Level III (Full Activation) with all ESFs – no unmet needs
  - All shelters closed

# Eastern Pacific – Tropical Outlook



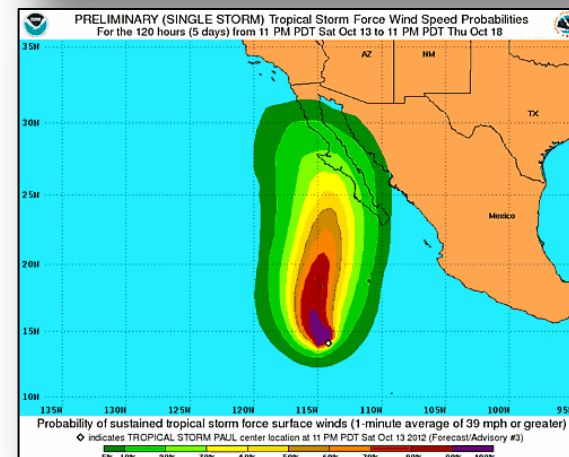
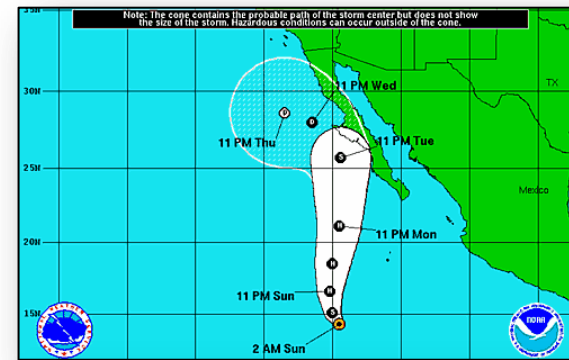
FEMA



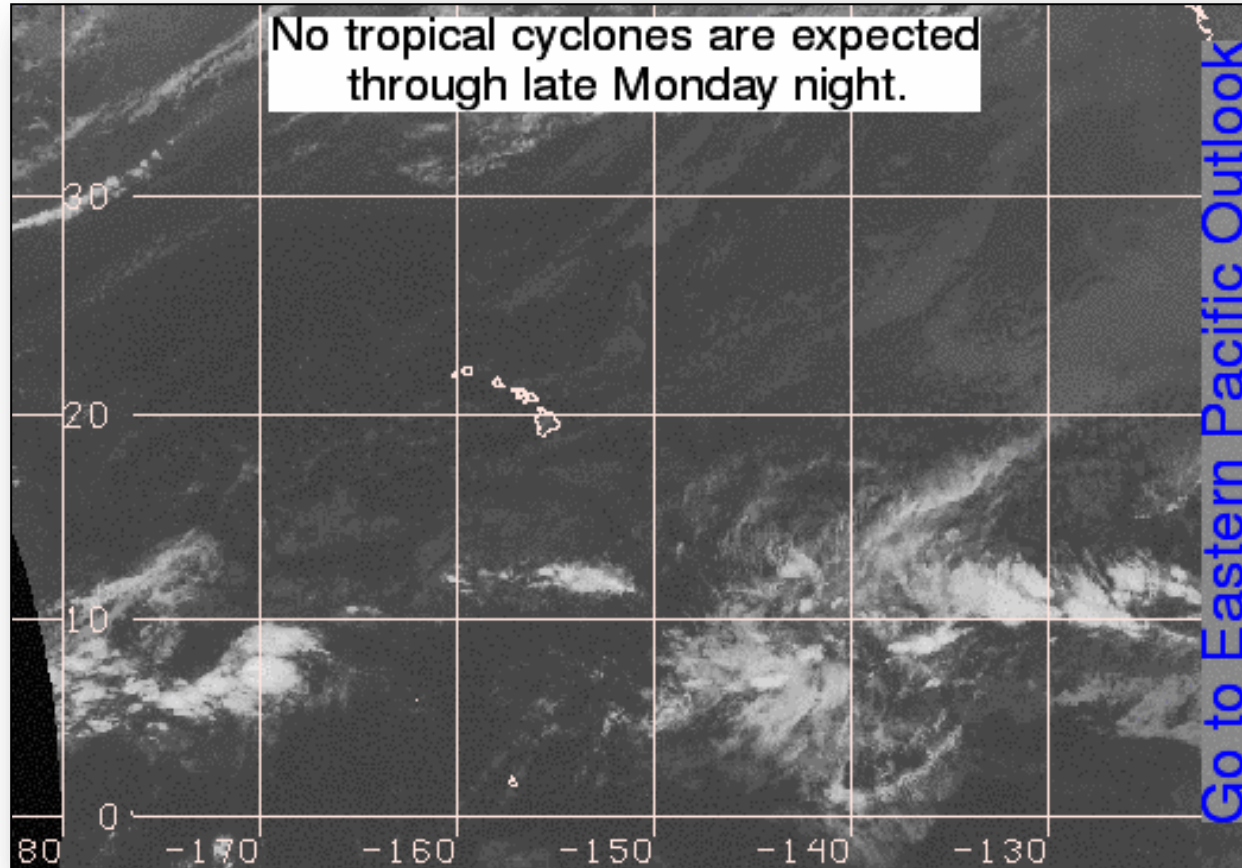
# Eastern Pacific –Tropical Storm Paul

As of 5:00 a.m. EDT

- 665 miles SSW of southern tip of Baja California Mexico
- Moving west at 9 mph
- Turn NW expected today followed by turn N by Monday
- Max sustained winds 50 mph
- Strengthening forecast next 48 hours; expected to become hurricane Monday
- Tropical storm force winds extend 90 miles



# Central Pacific – Tropical Outlook

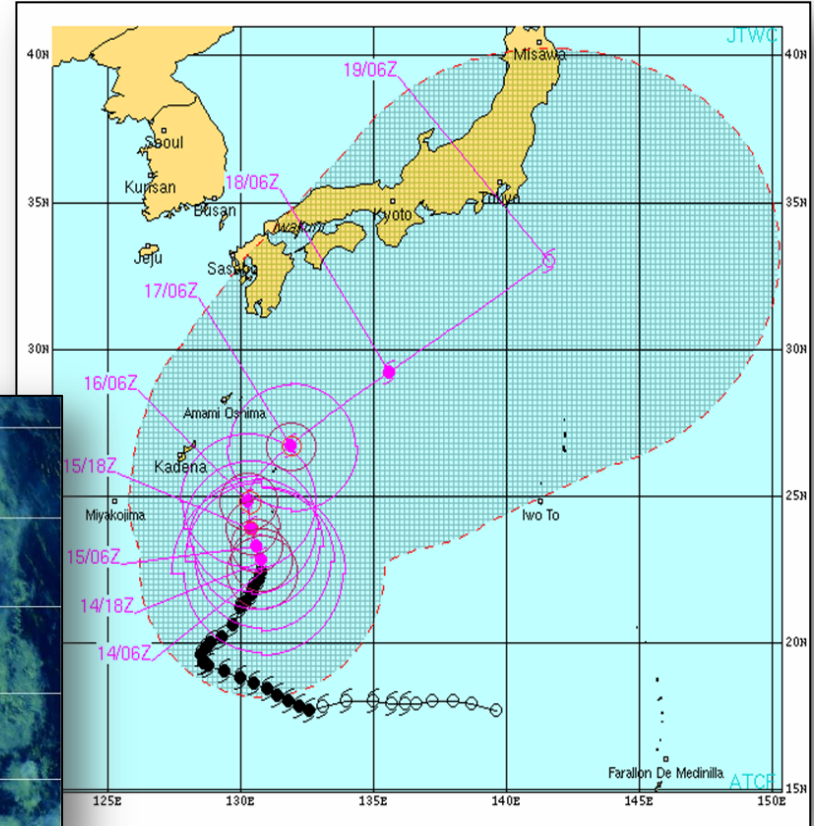
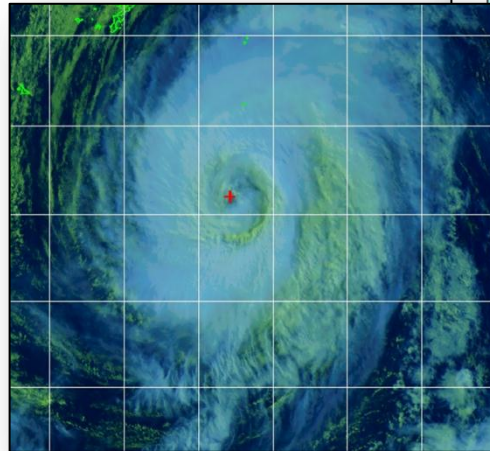




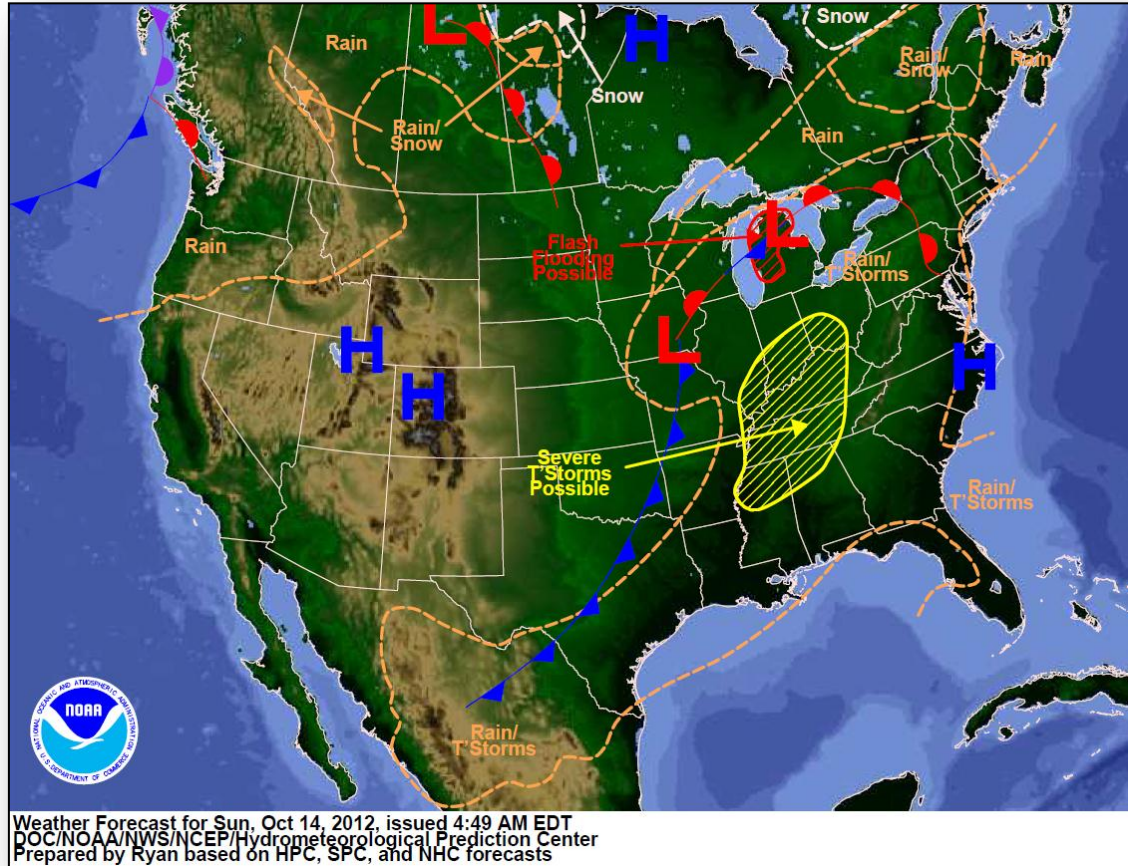
# Western Pacific – Typhoon 22W (Prapiroon)

As of 5:00 a.m. EDT

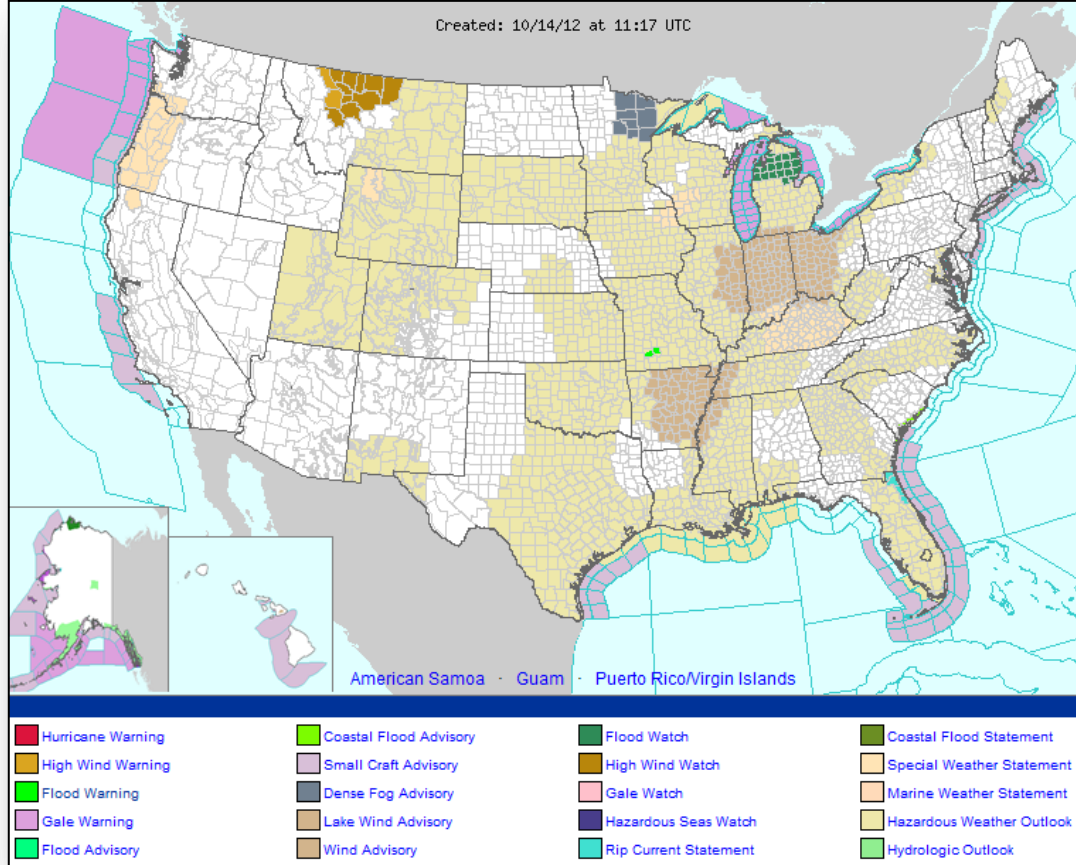
- 339 miles SE of Kadena AB, Okinawa, Japan
- Moving NNE at 3 mph
- Max sustained winds 75 mph
- Max significant wave height is 31 feet
- Closest point of arrival to Kadena AB is 165 miles at 7:00 a.m. EDT, Oct 16



# National Weather Forecast



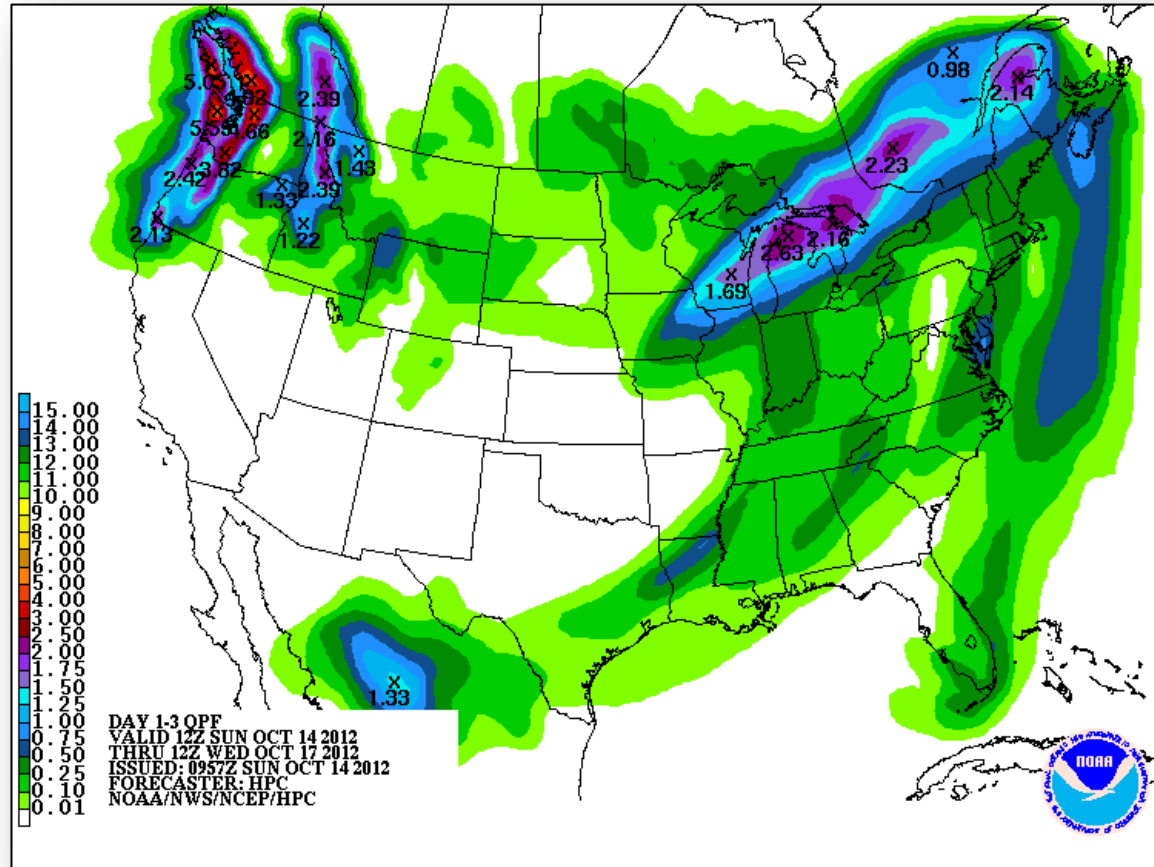
# Active Watches/Warnings



# Precipitation Forecast Days 1 – 3



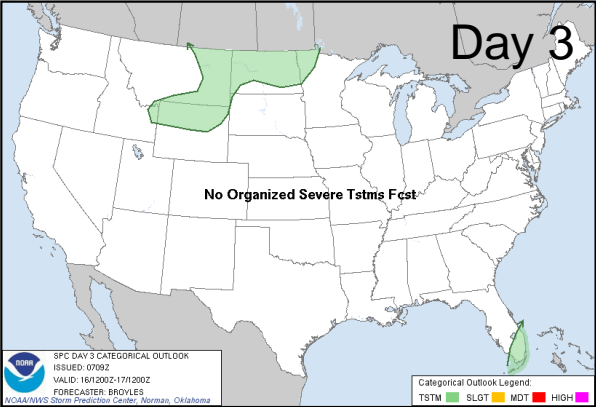
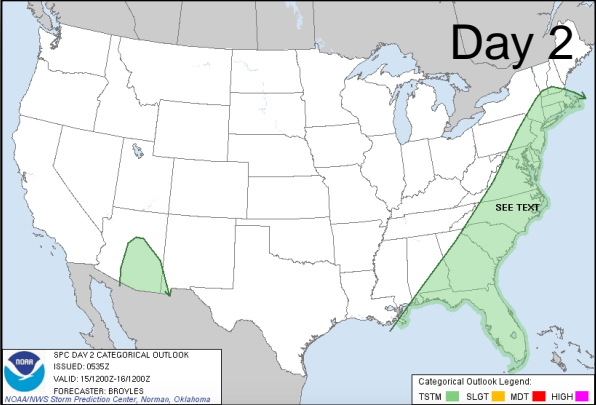
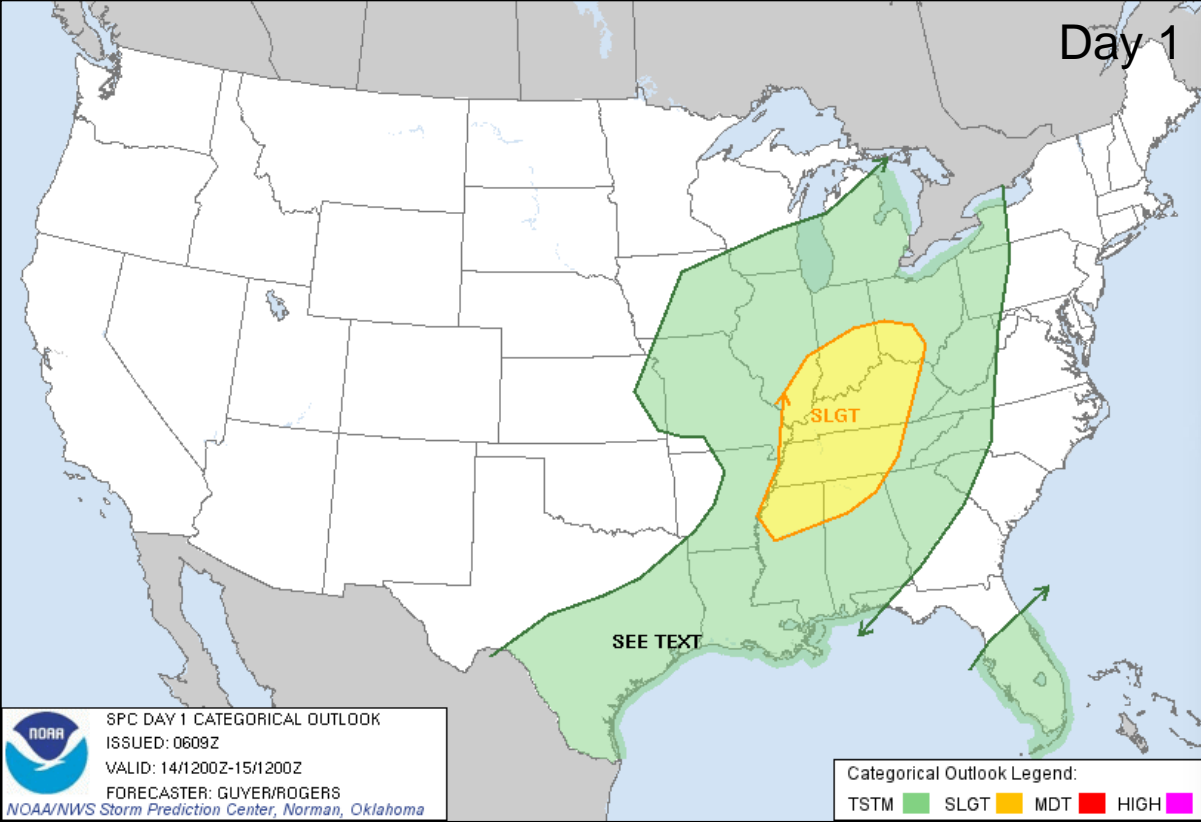
FEMA



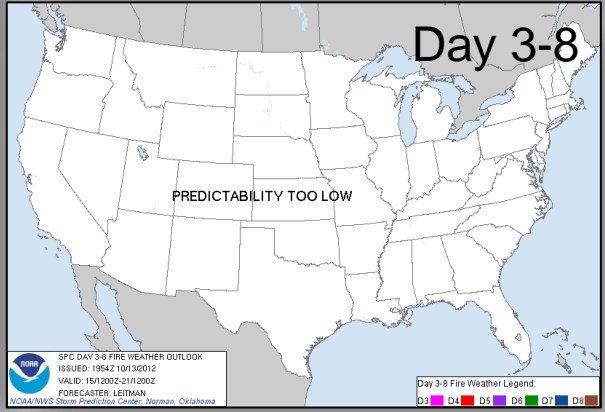
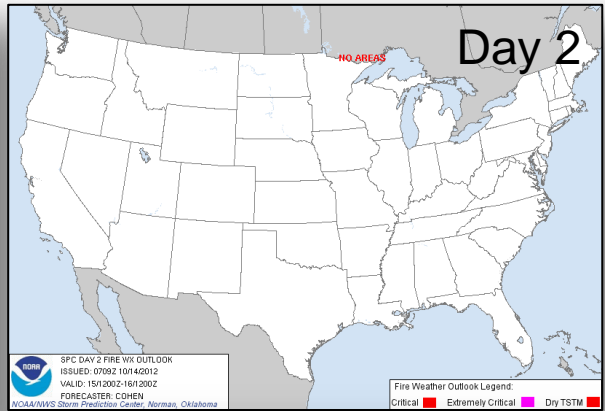
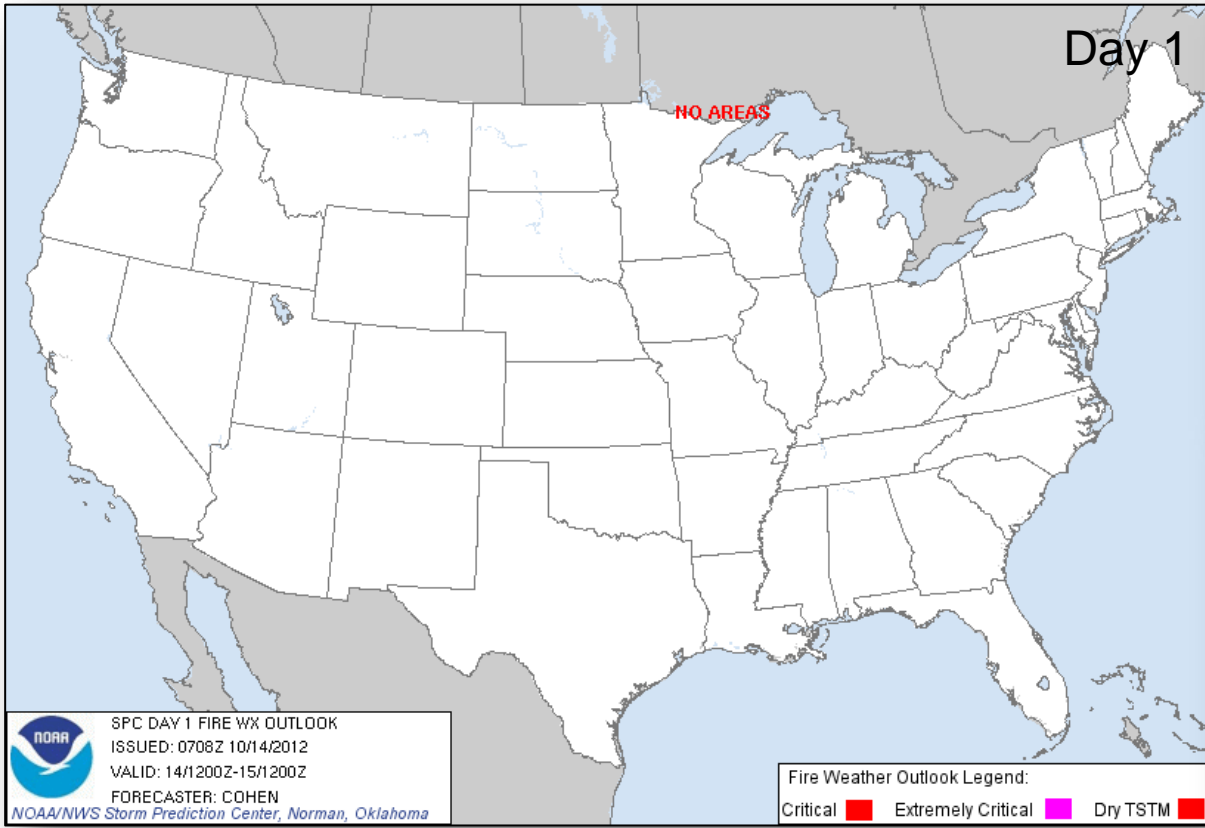
# River Flood Outlook – 7 Day



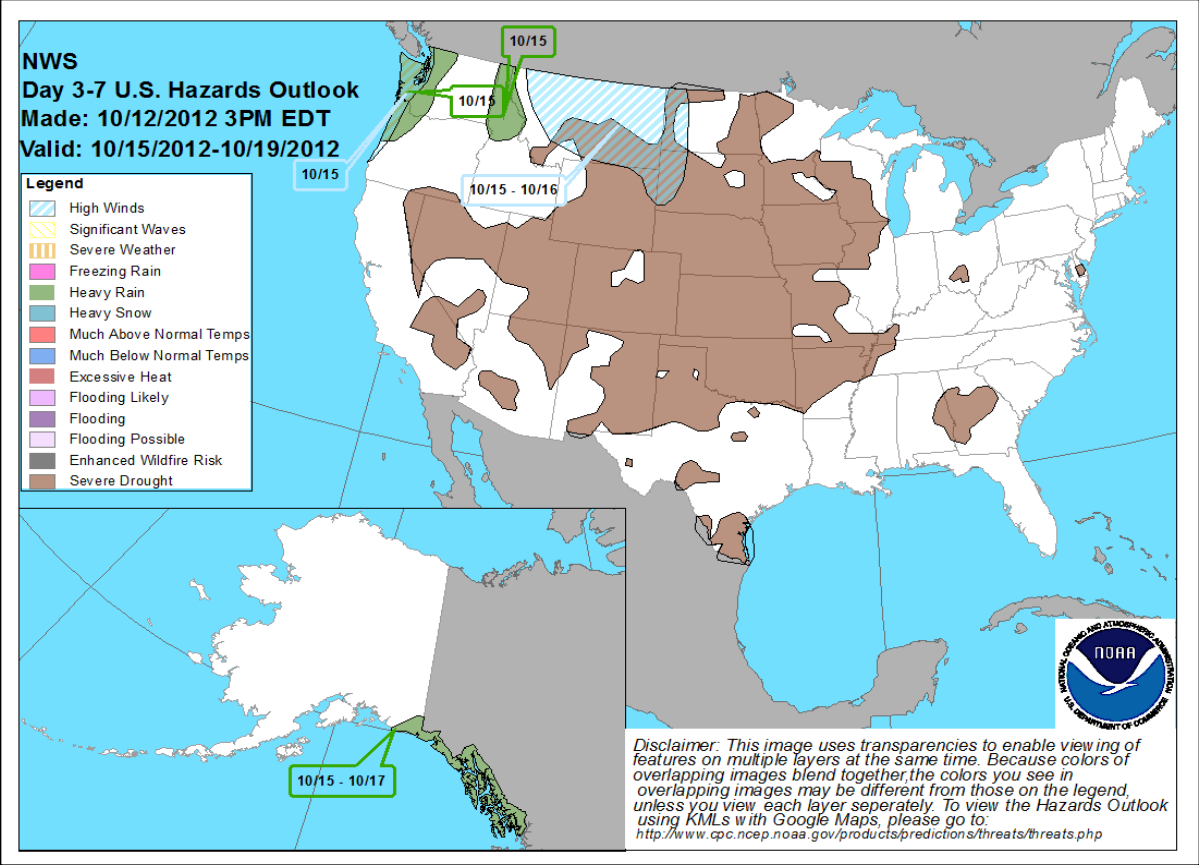
# Convective Outlook Days 1 – 3



# Critical Fire Weather Areas Days 1 – 8



# Hazard Outlook: October 15 – 19

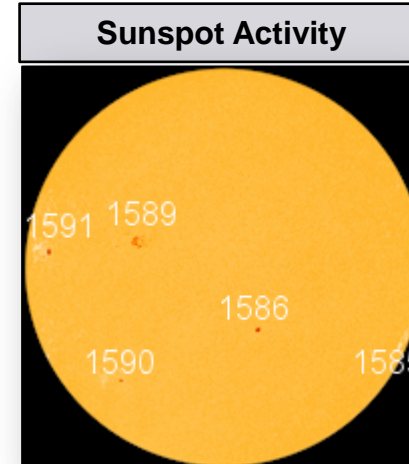
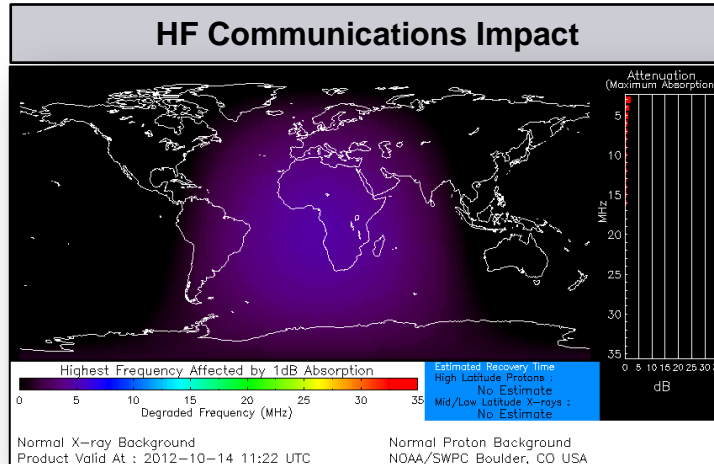




# Space Weather

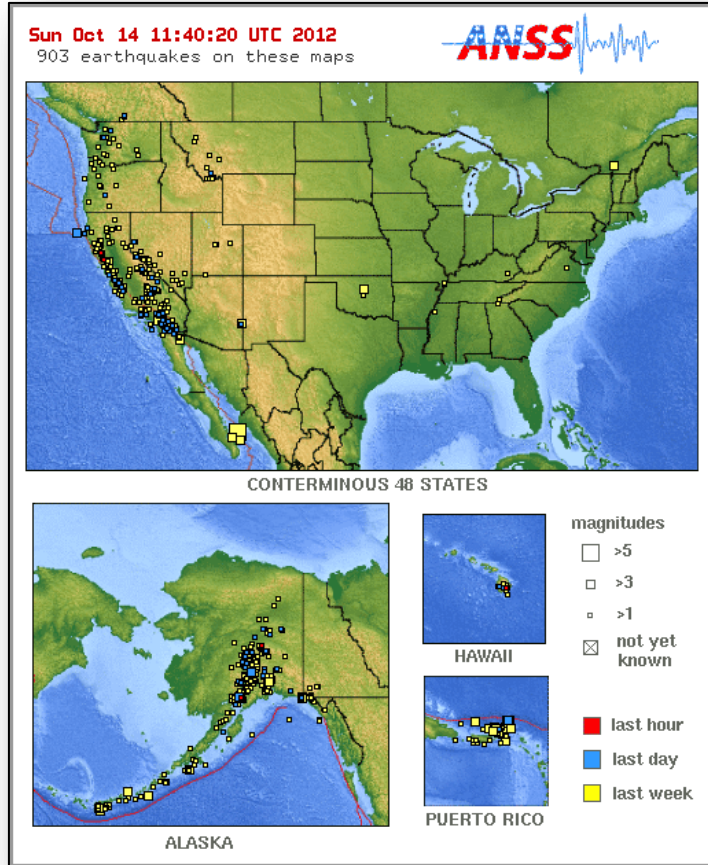


NOAA Scales Activity Range 1 (minor) to 5 (extreme)	Past 24 Hours	Current	Next 24 Hours
Space Weather Activity:	Minor	None	Minor
• Geomagnetic Storms	G1	None	G1
• Solar Radiation Storms	None	None	None
• Radio Blackouts	None	None	None



# Significant Earthquake Activity – U.S.

- No significant activity

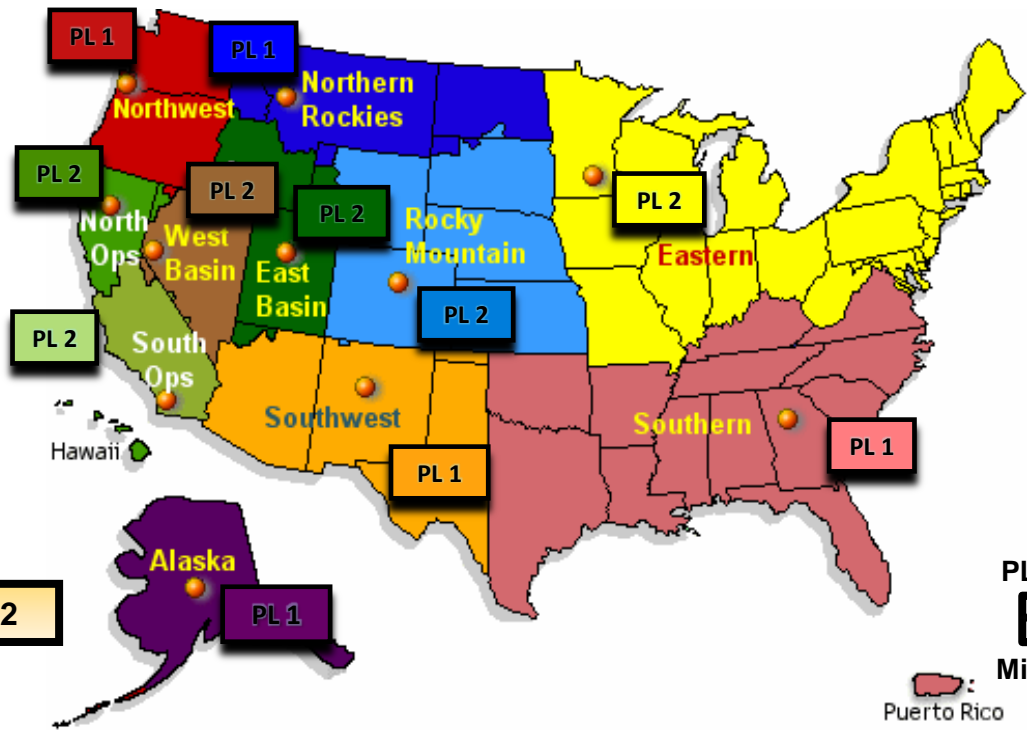


# US Wildland Fire Preparedness Levels

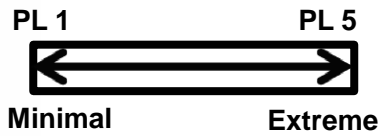


## National Preparedness Level: 2

Description: Several Geographic Areas are experiencing high to extreme fire danger. Wildland fire activity is increasing and large fires are occurring in one or more Geographic Areas. Minimal mobilization of resources from other Geographic Areas is occurring. There is moderate commitment of national resources with the potential to mobilize additional resources from other Geographic Areas.



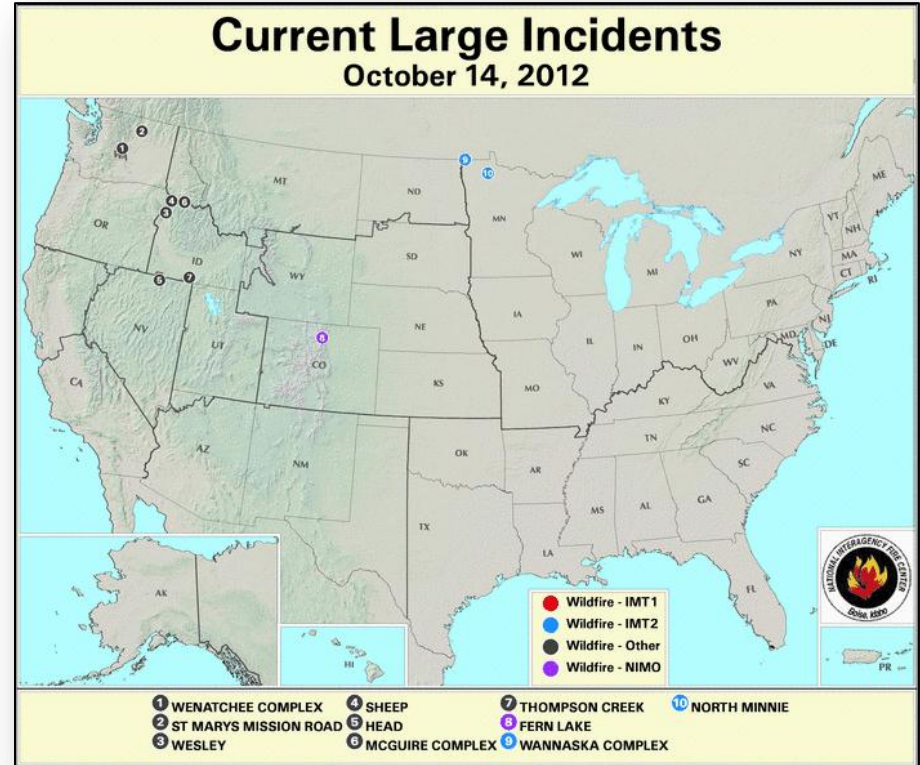
As of October 14, 2012



# National Fire Activity

## October 14, 2012:

- National Preparedness Level: 2
- Initial Attack Activity: Light (37 new fires)
- New Large Fires: 0
- Large Fires Contained: 1
- Uncontained Large Fires: 13
- Area Command Teams committed: 0
- NIMOs committed: 1
- Type 1 IMT(s) committed: 0
- Type 2 IMT(s) Committed: 1
- States Affected: CO, ID, MN, NV, & WA



# Disaster Requests & Declarations



Declaration Requests in Process		Requests APPROVED (since last report)	Requests DENIED (since last report)
3	Date Requested	0	0
FL – DR (Appeal) Hurricane	September 28, 2012		
OK – DR Wildfires	September 27, 2012		
UT – DR Severe Storms and Flooding	October 5, 2012		

# FMAG Requests and Declarations



Action (since last report)	Total	FMAG No. and State
Requests DENIED	0	
Requests APPROVED	0	
Requests Expected Next 24 Hours	0	None as of 1200 10/13/12

As of October 13, 2012	2012	2011*
FMAGs Approved	48	112
FMAGs Denied	15	35

\* Cumulative FMAG figures as of this date in 2011

# Disaster Amendments



Declaration Amendment Number	Effective Date	Amendment Action
Amendment No. 15 FEMA-4080-DR-LA	October 12, 2012	Terminates Michael J. Hall as FCO; appoints Gerard M. Stolar as FCO

# OFDC Cadre Member Status



## Federal Coordinating Officer

Deployed	Detailed	Available	Not Available	Total
22	0	11	2	35
Total Available	Type 1	Type 2	Type 3	Type 4
13*	3*	5	2	2

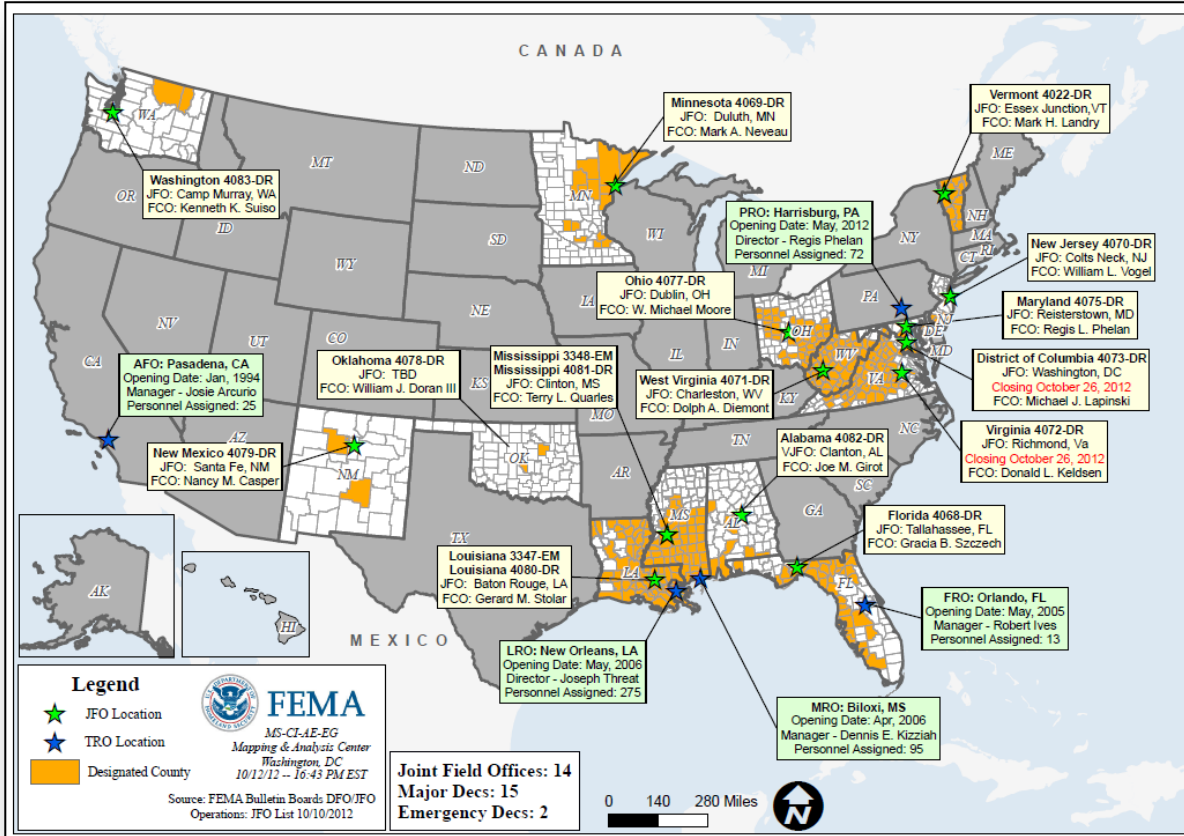
\* All Type 1 FCOs are available unless deployed to a Level 1 event

## Federal Disaster Recovery Coordinator

Positions	On Board	Available	Deployed	Pending Hire
10	5	3	2	0



# Open Field Offices as of October 14, 2012



# Joint Preliminary Damage Assessments



Region	State	Event	IA/PA	Number of Counties			Start – End
				Requested	Ongoing	Complete	
X	AK	Severe Storms & Flooding September 19, 2012	IA	3	3	0	10/11 – 10/16
			PA	3	0	0	10/15 – 10/23

# MCOV Fleet / Deployment Status



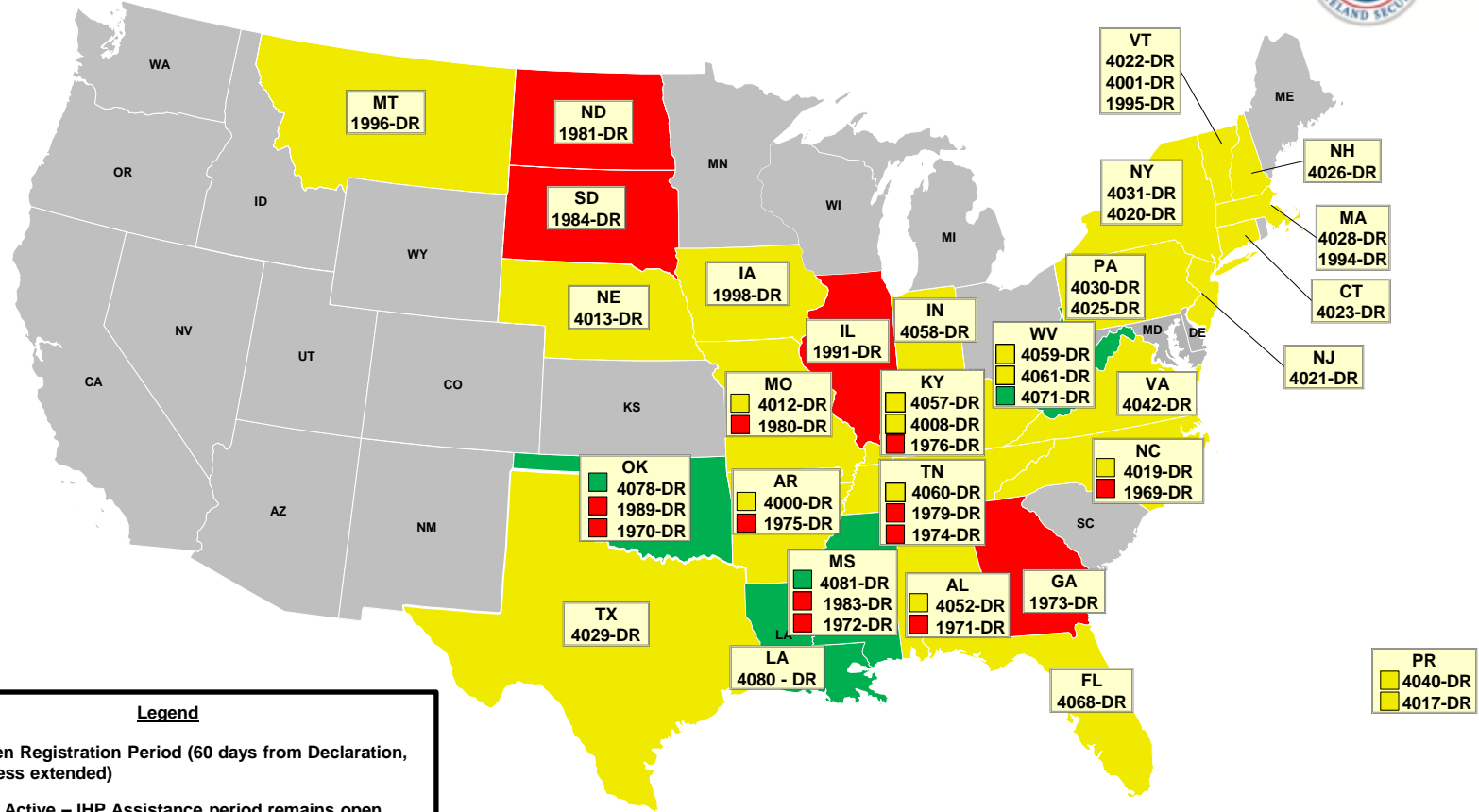
MCOV FLEET STATUS					
Location	Units Assigned	Available FMC	Deployed Committed	PMC	NMC
DC Atlanta	21	16	3		2
DC Cumberland	10	4	6		
DC Ft Worth	14	12	2		
DC Moffett	6	6			
Holliston, MA	1	1			
Denver, CO	2	2			
Bothell, WA	2	2			
<b>TOTAL</b>	<b>56</b>	<b>43</b>	<b>11</b>	<b>0</b>	<b>2</b>
Included in above totals, units in route for turn-in.		1			

MCOV DISASTER SUPPORT DEPLOYMENTS					
DR-State	OPCON	En Route	Unit Prep	Open Request	Notes:
LA-4080-DR	7				
MS-4081-DR	3				
WV-4071-DR	1				
<b>TOTAL</b>	<b>11</b>	<b>0</b>	<b>0</b>	<b>0</b>	

Fully Mission Capable	54
Partially Mission Capable	0
Non-Mission Capable	2
<b>Total Not Deployed</b>	<b>45</b>

Data as of: 10/14/12 @ 0700

# Active IA Disasters



# of DRs	Legend
4	Open Registration Period (60 days from Declaration, unless extended)
30	IHP Active – IHP Assistance period remains open (18 Months from Declaration)
15	IHP Closing Within 60 Days

Data as of: 10/11/12 @ 1500

# IA Registration Statistics



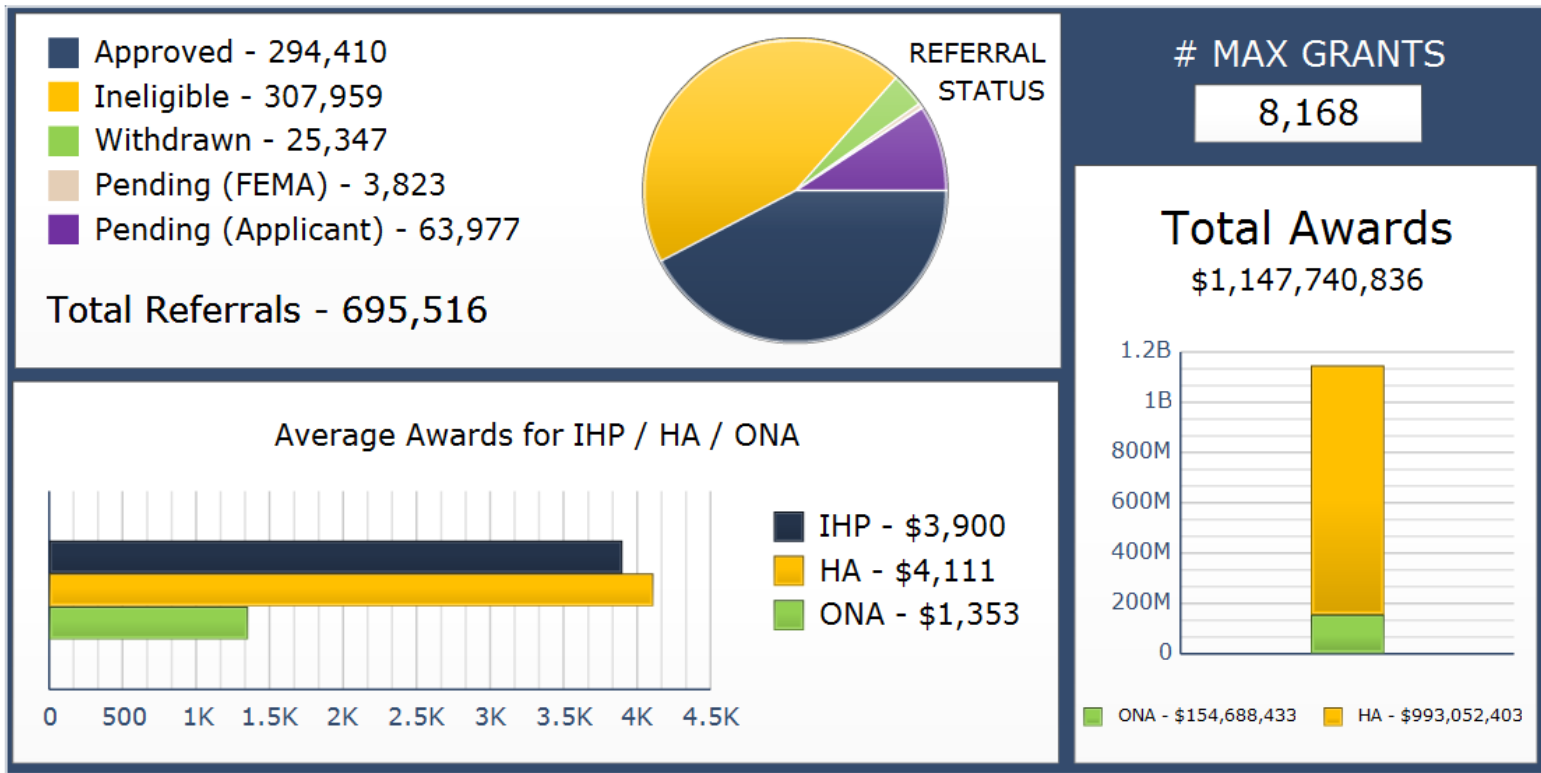
## Cumulative as of October 11, 2012 @ 1500

DR # - State	Registrations	Approved Applicants	Total HA Approved	Total ONA Approved	Total IHP Approved
4071 - WV	2,085	346	\$805,992	\$31,280	\$837,272
4078 - OK	763	348	\$5,681,177	\$561,579	\$6,242,756
4080 - LA	194,969	40,876	\$84,861,562	\$18,641,024	\$103,502,586
4081 - MS	24,601	6,029	\$11,933,302	\$2,165,708	\$14,099,011
<b>Totals</b>	<b>222,418</b>	<b>47,599</b>	<b>\$103,282,033</b>	<b>\$21,399,591</b>	<b>\$124,681,624</b>
24 Hour Change	+415	+347	+\$932,072	+\$227,365	+\$1,159,437

## NPSC Call Data for October 10, 2012

Total NPSC Calls Answered (Helpline + Registration Intake)	5,404
Average time to answer call	49 seconds

# IHP Referral Status & Awards



Data includes the 49 IHP Active DRs

Data as of: 10/11/12 @ 1500

# Housing Inspection Statistics



**Data as of October 11, 2012 @ 1500**

<b>DR # - State</b>	<b>Inspectors</b>	<b>Inspections Assigned</b>	<b>Inspections Completed</b>	<b>Inspection % Complete</b>	<b>Turnaround Time (Days)</b>
<b>4071 - WV</b>	10	1,109	1024	92.3%	1.7
<b>4078 - OK</b>	2	521	486	93.3%	2.0
<b>4080 - LA</b>	59	137,239	131,152	95.6%	3.7
<b>4081 - MS</b>	24	20,563	19,087	92.8%	3.0
<b>TOTAL</b>	<b>95</b>	<b>159,432</b>	<b>151,749</b>	<b>95.2%</b>	<b>3.6</b>
<b>24 Hour Change</b>	<b>-7</b>	<b>+692</b>	<b>+627</b>	<b>-0.0%</b>	<b>-0.0</b>

# IMAT Status



National Teams					
Team	Status	Team	Status	Team	Status
BLUE (East)	LA	WHITE (Central)	MS	RED (West)	LA
Regional Teams					
Team	Status	Team	Status	Team	Status
Region I		Region V		Region IX-1	
Region II	USVI	Region VI-1	LA	Region IX-2	
Region III	Reconstituting	Region VI-2	OK	Region X	WA
Region IV-1		Region VII			
Region IV-2		Region VIII			

= Available/Mission Capable     
  = Assigned/Deployed  
 = Available/Partially Mission Capable     
  = Out-of-Service



# Urban Search & Rescue



FEMA

INCIDENT SUPPORT TEAMS (Red-White-Blue) – Monthly On Call Rotation											
JAN	FEB	MAR	APR	MAY	JUN	JUL	AUG	SEP	OCT	NOV	DEC
WEST				CENTRAL				EAST			
Team	Status	Team	Status	Team	Status	Team	Status				
CA-TF1	Available	AZ-TF1	Available	FL-TF1	Available						
CA-TF2	Available	CO-TF1	Conditionally Available	FL-TF2	Available						
CA-TF3	Available	IN-TF1	Available	MA-TF1	Available						
CA-TF4	Available	MO-TF1	Available	MD-TF1	Available						
CA-TF5	Available	NE-TF1	Available	NY-TF1	Available						
CA-TF6	Available	NM-TF1	Non-operational	PA-TF1	Conditionally Available						
CA-TF7	Available	NV-TF1	Conditionally Available	VA-TF1	Available						
CA-TF8	Available	TN-TF1	Conditionally Available	VA-TF2	Available						
WA-TF1	Available	TX-TF1	Available	OH-TF1	Available						
		UT-TF1	Conditionally Available								

= Available/Mission Capable     
  = Assigned/Deployed  
 = Available/Partially Mission Capable     
  = Out-of-Service

# RRCC / Regional Watch Center Status



Region	RRCC	Regional Watch Center
I	Watch/Steady State	Maynard MOC (24/7)
II	Level III (Partial Activation)	24/7
III	Watch/Steady State	24/7
IV	Watch/Steady State	24/7
V	Watch/Steady State	24/7
VI	Watch/Steady State	Denton MOC (24/7)
VII	Level III (Monitoring 24/7)	24/7
VIII	Watch/Steady State	Denver MOC (24/7)
IX	Watch/Steady State	24/7
X	Watch/Steady State	Bothell MOC (24/7)

# National Team Status



Team/Status	Current Location	Remarks
National Watch Center	Washington, DC	Watch/Steady State
NRCC	Washington, DC	Not Activated
HLT	Miami, FL	Activated
DEST	Washington, DC	Not Activated
Mission Capable	Partially Mission Capable	Not Mission Capable



# FEMA

**FEMA's mission is to support our citizens and first responders to ensure that as a nation we work together to build, sustain, and improve our capability to prepare for, protect against, respond to, recover from, and mitigate all hazards.**