



FEMA

Daily Operations Briefing

September 24, 2012

As of 8:30 a.m. EDT



Significant Activity: September 21 – 24

Significant Events:

- Severe storms – South-central Alaska

Tropical Activity:

- Atlantic – Tropical Storm Nadine
- Eastern Pacific – Hurricane Miriam (Category 2)
- Central Pacific – No tropical cyclones are expected through Wednesday morning
- Western Pacific – No activity expected to impact US territories

Significant Weather:

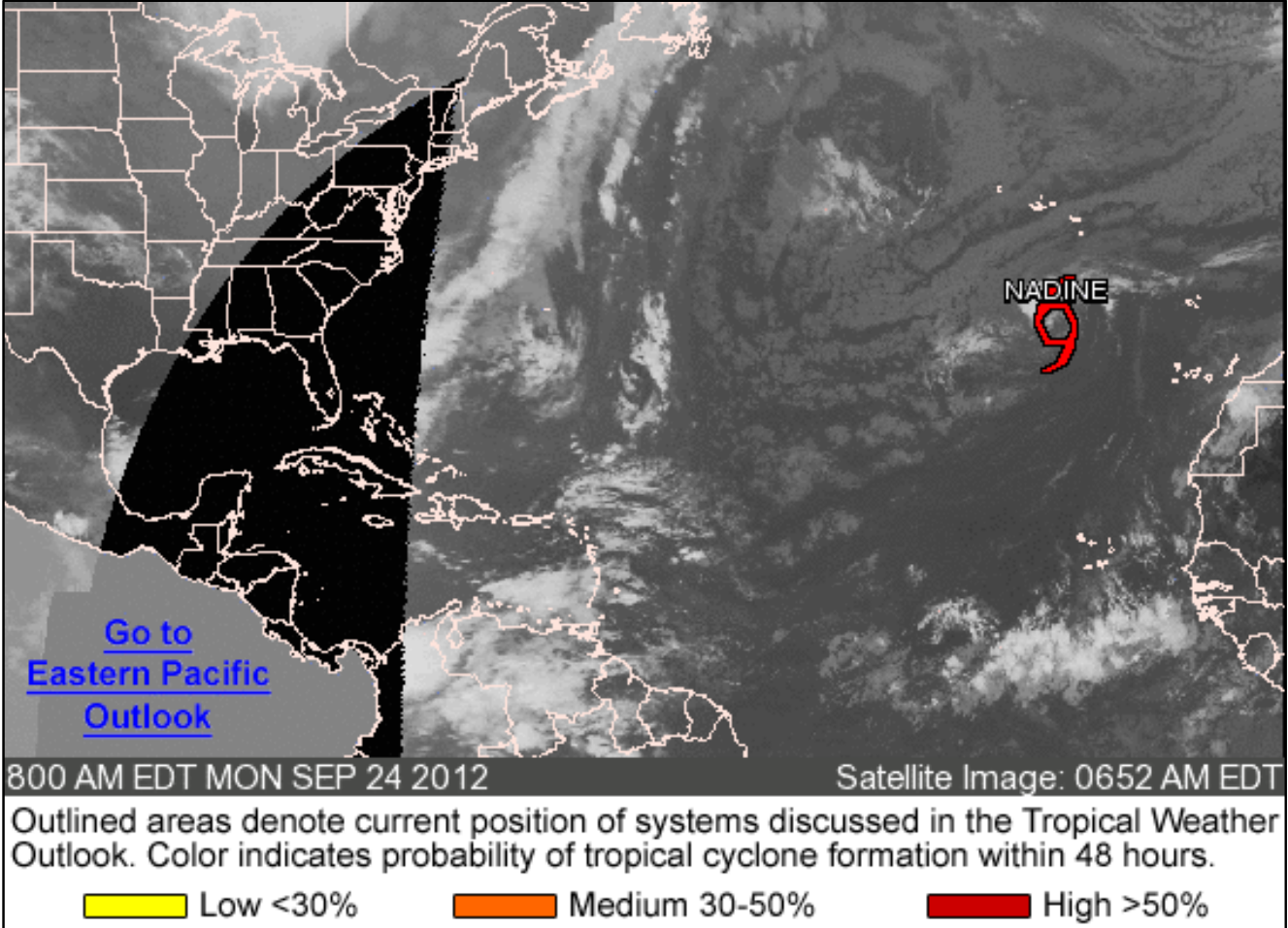
- Rain & thunderstorms – Mid-Mississippi & Ohio Valleys; Central Great Basin & the Rockies
- Critical Fire Weather Areas: Northern Texas, southern Nebraska & much of Oklahoma
- Red Flag Warnings: Oklahoma & Nebraska
- Space Weather: No storms observed/predicted

Earthquake Activity: No significant activity

Declaration Activity:

- FEMA-5021-FM-CA approved for the Shockey Fire in California
- Major Disaster Declaration FEMA-4082-DR-AL approved for Alabama
- Amendment No.12 to FEMA-4080-DR-LA

Atlantic – Tropical Outlook



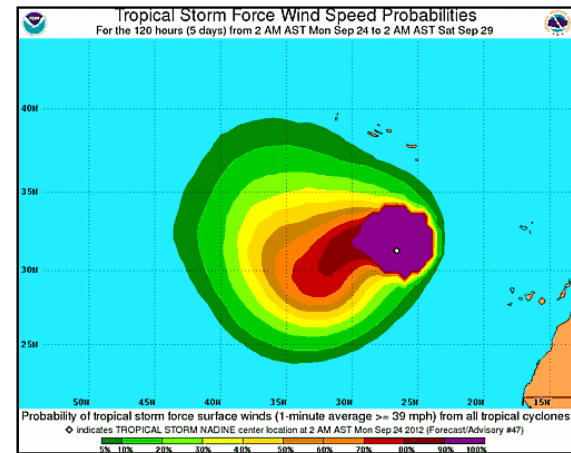
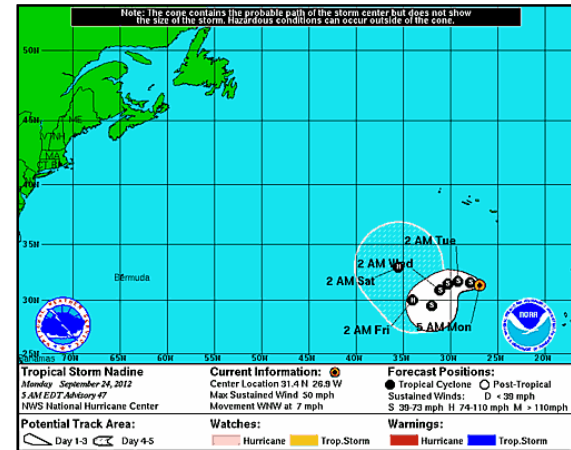
[Go to Eastern Pacific Outlook](#)



Atlantic – Tropical Storm Nadine

As of 5:00 a.m. EDT

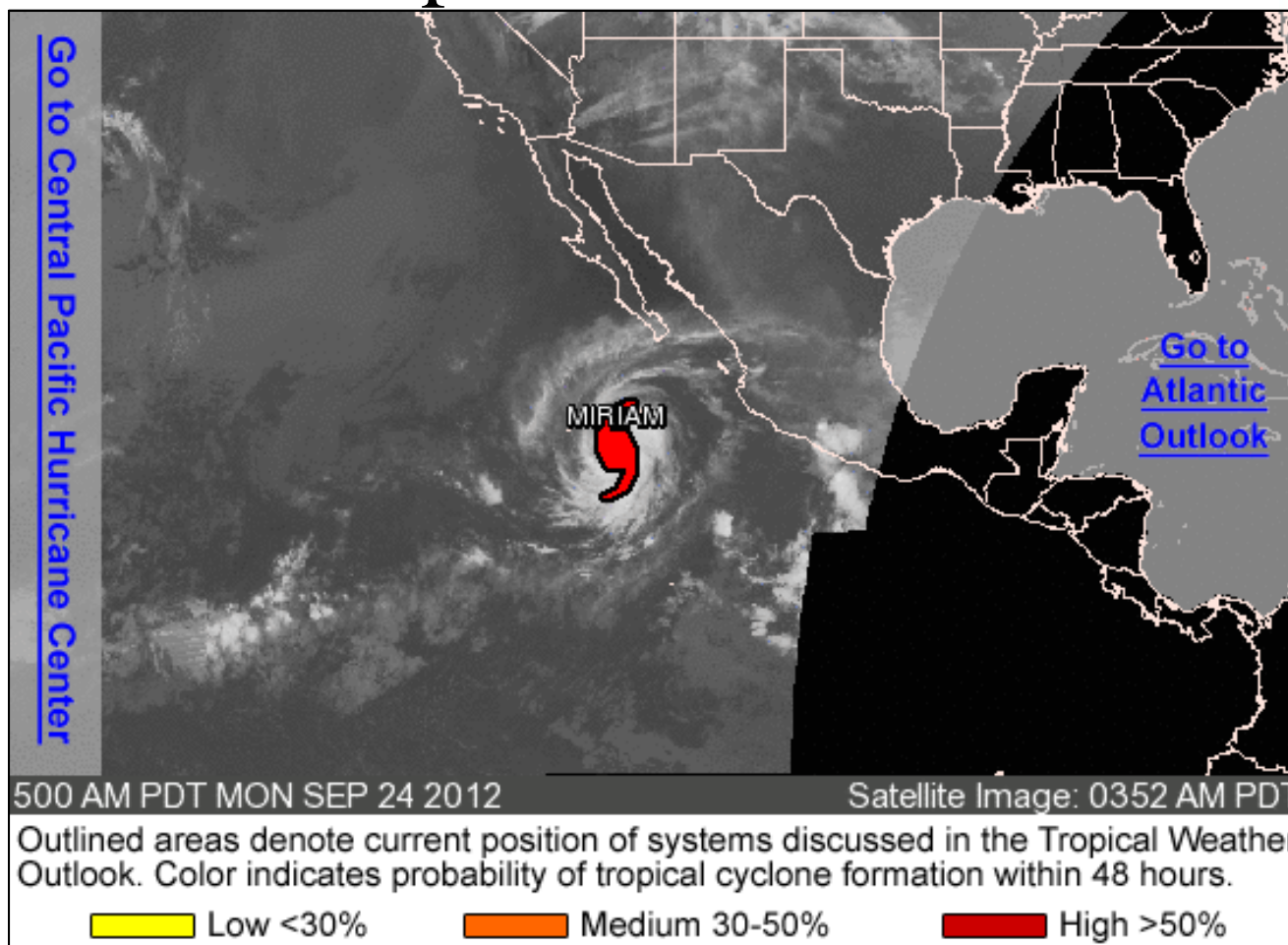
- TS Nadine is located 455 miles S of the Azores
- Moving WNW at 7 mph
- Gradual turn toward the W and WSW with some increase in forward speed is expected over the next 24 to 48 hours
- Max sustained winds near 50 mph w/ higher gusts
- Little change in strength is forecast
- Tropical storm-force winds extend 230 miles



Eastern Pacific – Tropical Outlook



FEMA

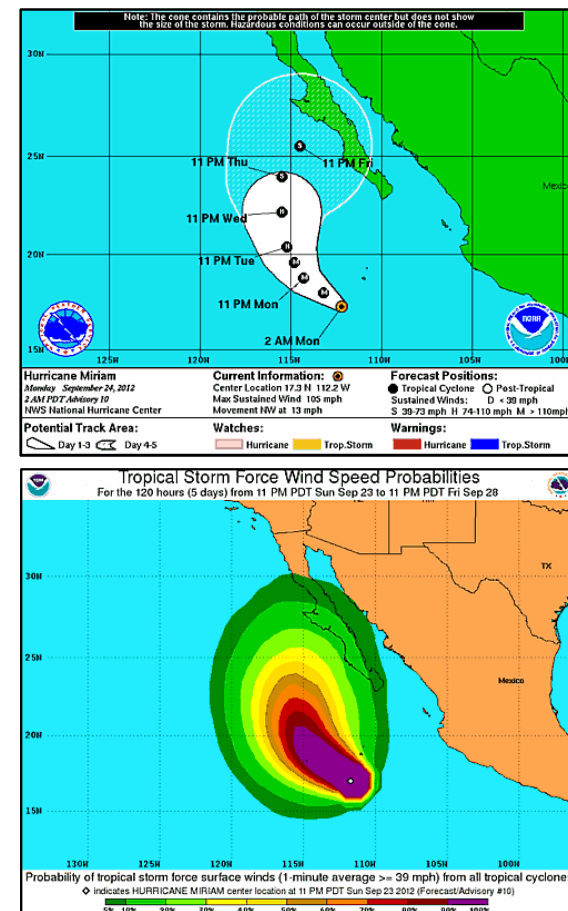


Eastern Pacific – Tropical Storm Miriam

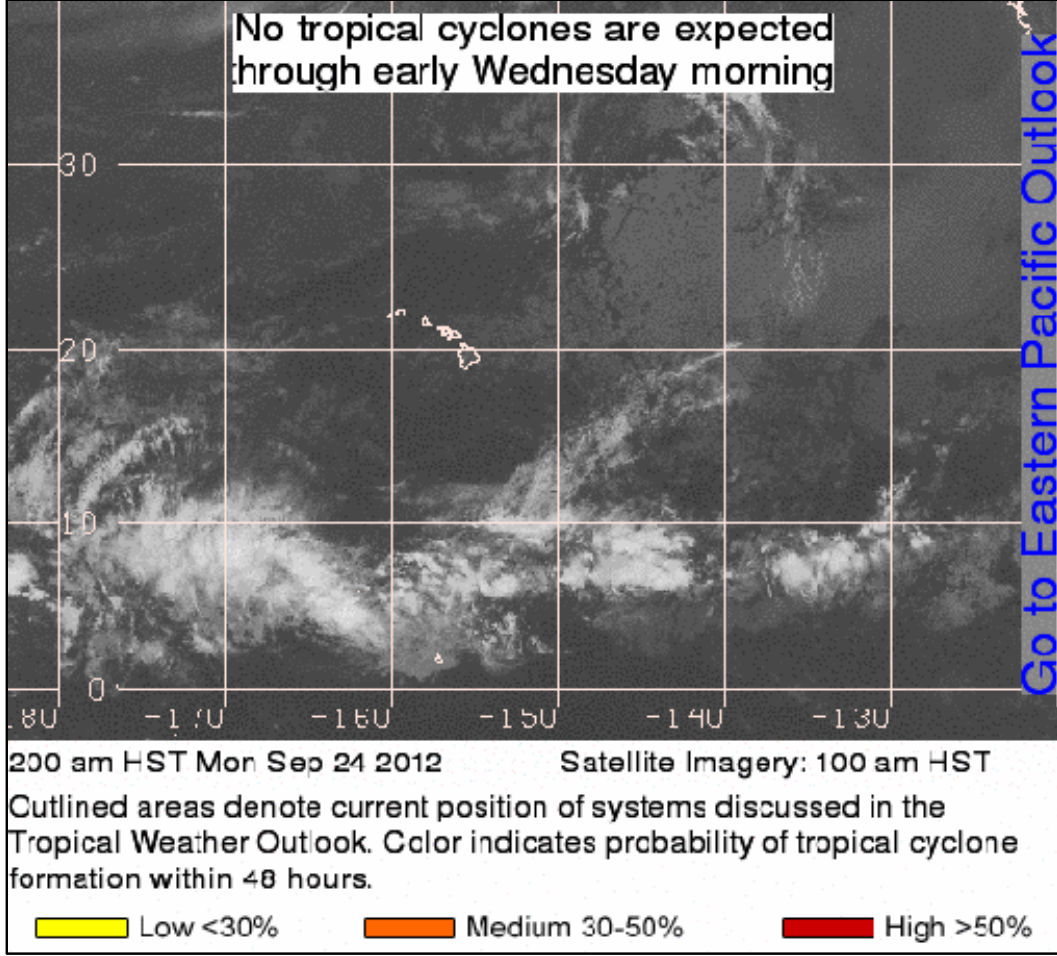


As of 5:00 a.m. EDT

- Located 415 miles SSW of Southern tip of Baja California, Mexico
- Moving NW at 13 mph
- General motion with a reduction in forward speed is expected during the next couple of days
- Miriam is category 2 hurricane
- Max sustained winds near 105 mph with higher gusts
- Additional strengthening is forecast
- Miriam could become a major hurricane later today
- Hurricane force-winds extend outward 30 miles
- Tropical storm-force winds extend outward 115 miles



Central Pacific – Tropical Outlook





Severe Storms & Flooding – Alaska

Current Situation

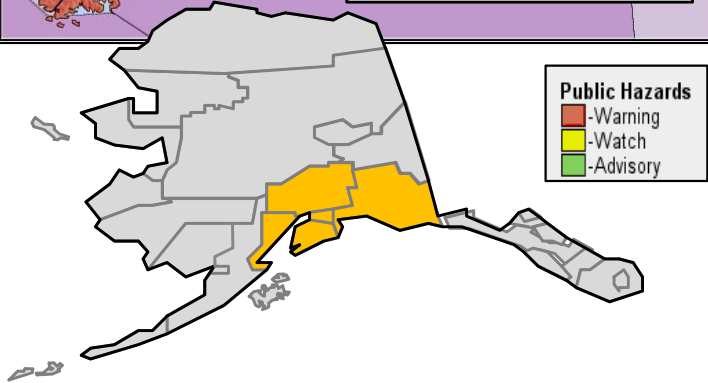
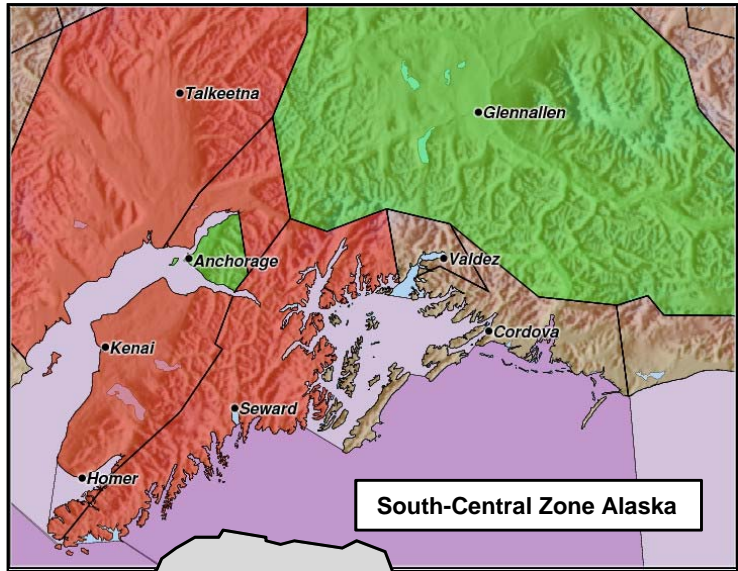
- Storms moved through south-central Alaska bringing heavy rain to western Prince William Sound, western Kenai Peninsula & western Susitna Valley
- ▲ Flooding reported on some roads & low-lying residential areas
- ▲ Conditions along many rivers & creeks is improving
- ▲ Additional rainfall expected but no additional significant rises in smaller river/creeks expected
- ▲ Kenai River will continue to see rising waters through middle of week due to runoff

State and Local Response

- Governor declared State Disaster for impacted areas (Sep 21)
- Alaska State EOC Level 3 (Partial Activation)
- ▲ Voluntary evacuations continue; 1 ARC shelter open w/ 6 occupants
- ▲ Local damage assessments ongoing; road closures & railway disruptions continue
- No fatalities, or injuries reported

Federal Response

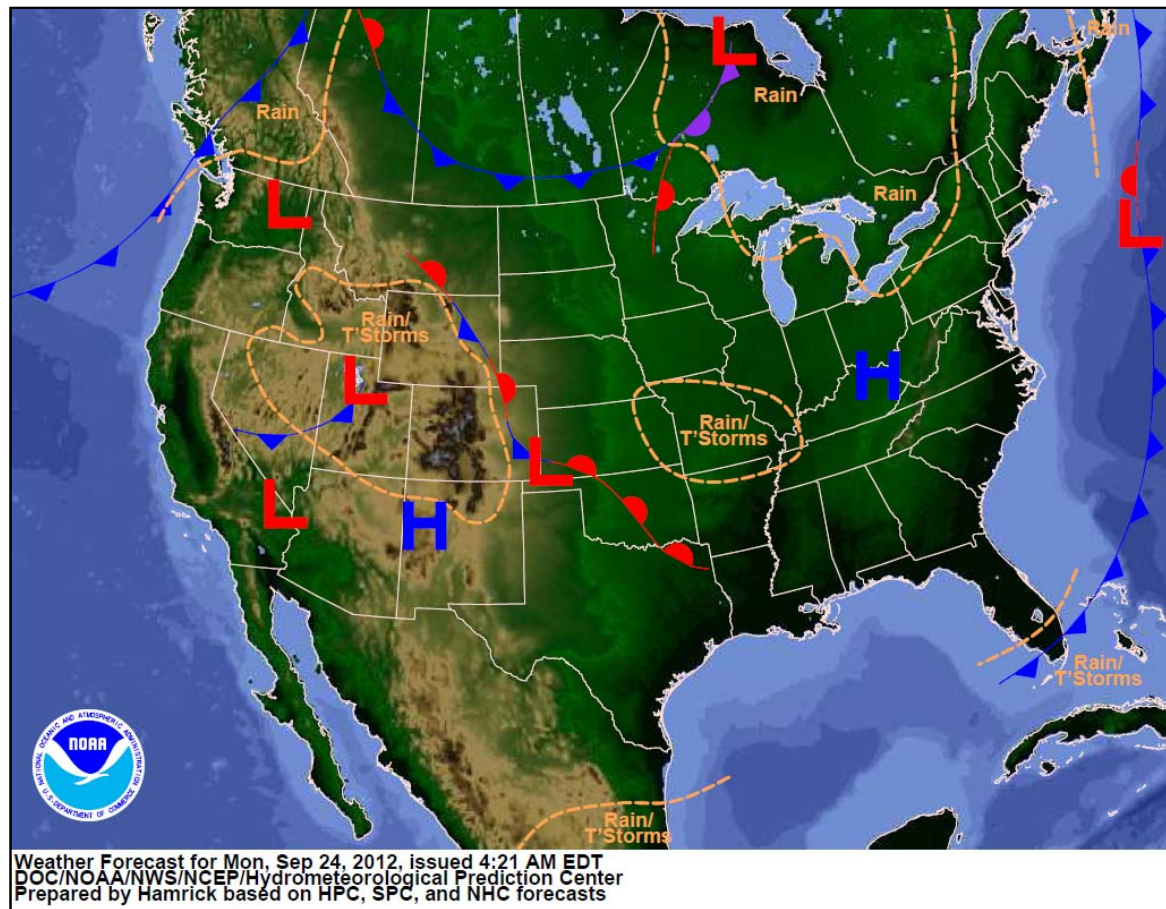
- Region X RRCC at Watch/Steady State
- No request for FEMA assistance



National Weather Forecast



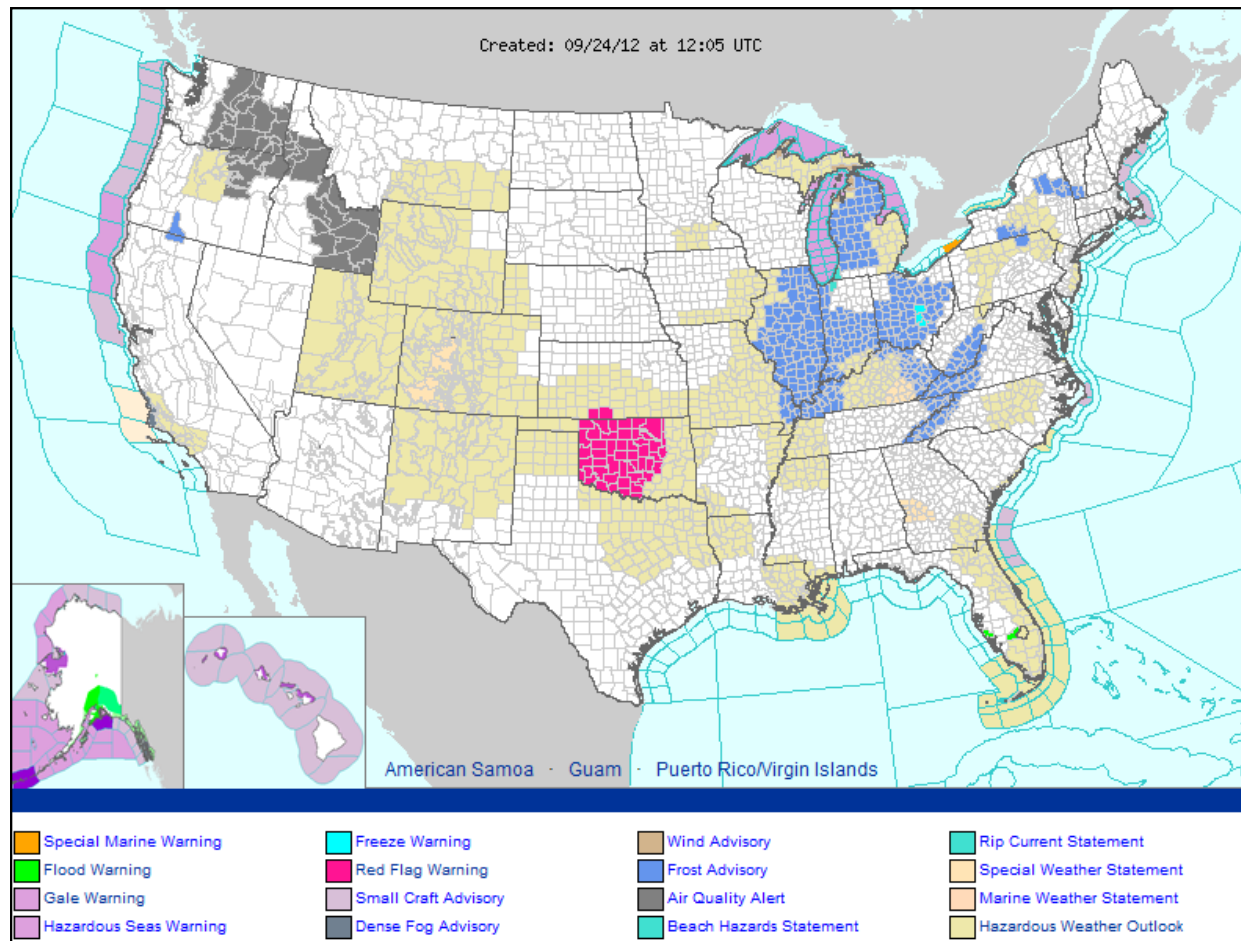
FEMA



Active Watches/Warnings



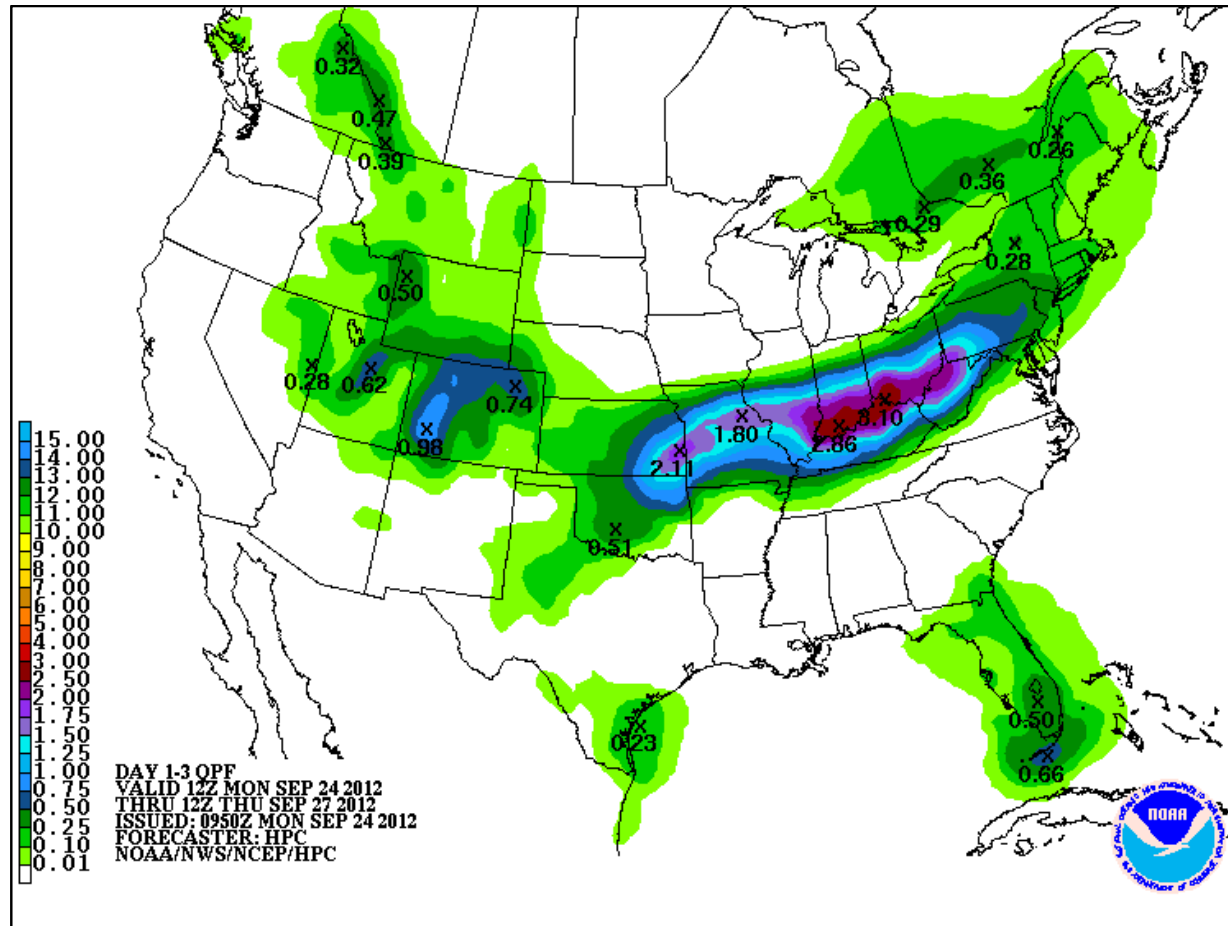
FEMA



Precipitation Forecast Days 1 – 3



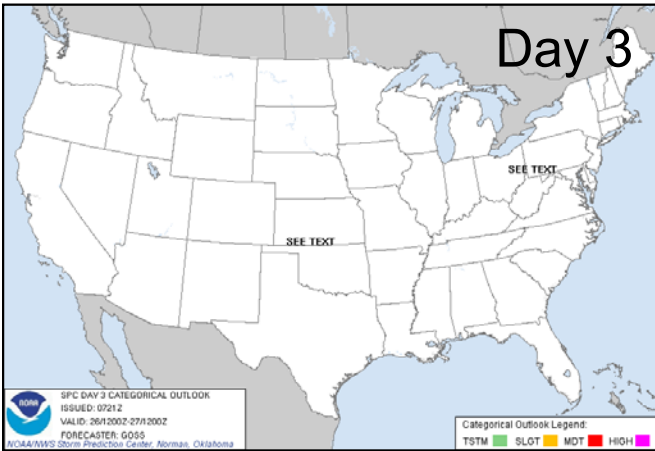
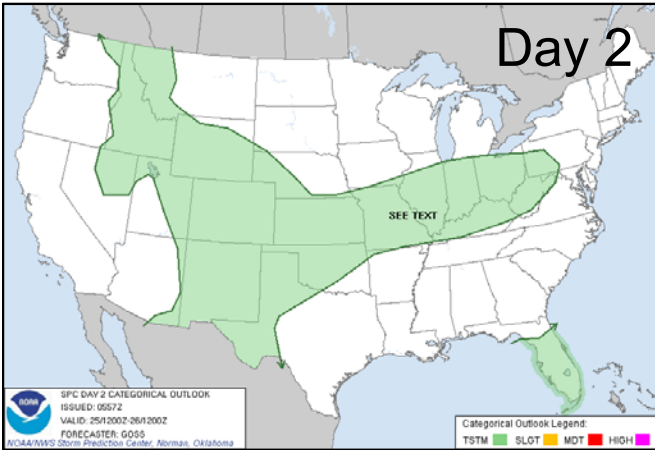
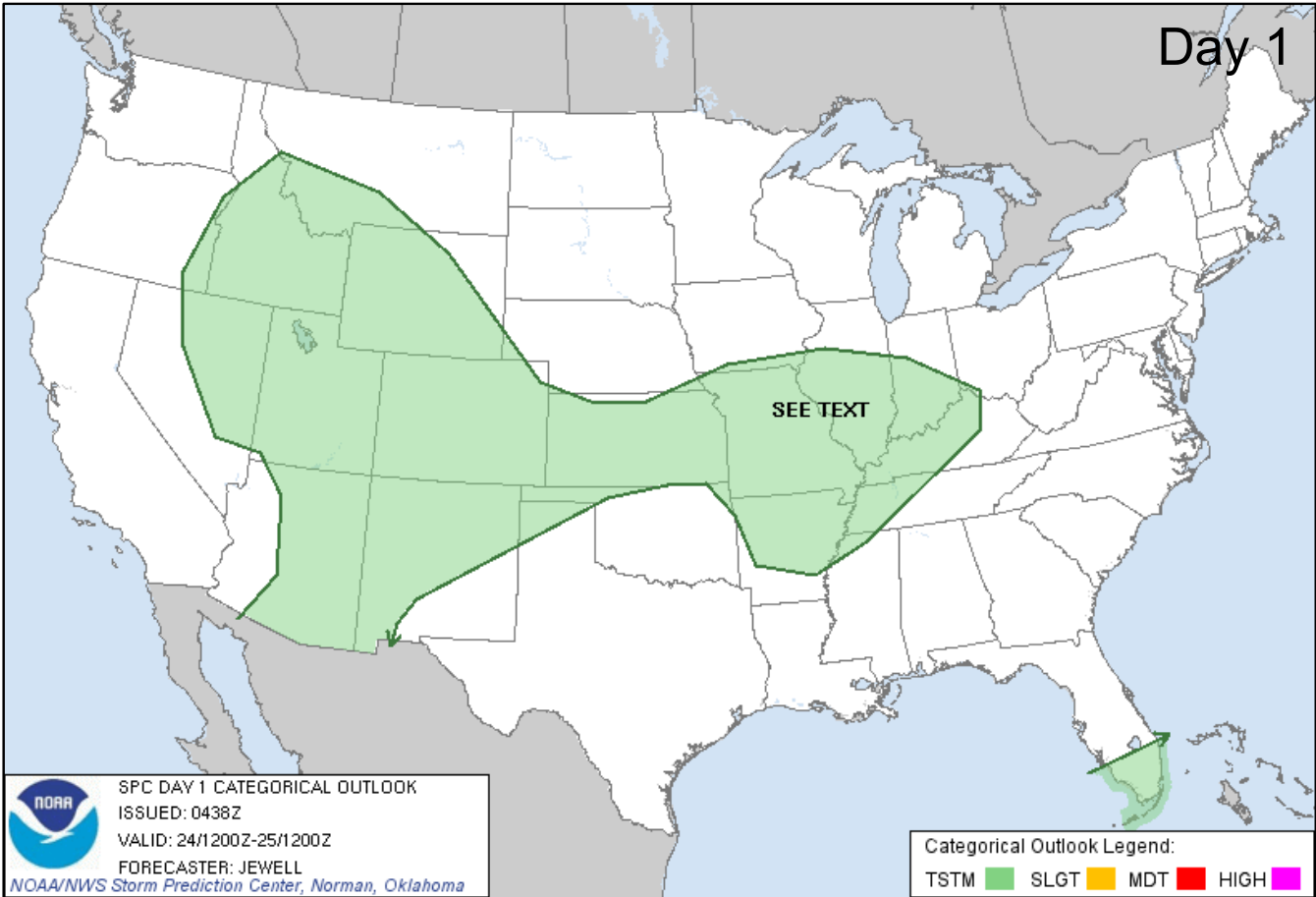
FEMA



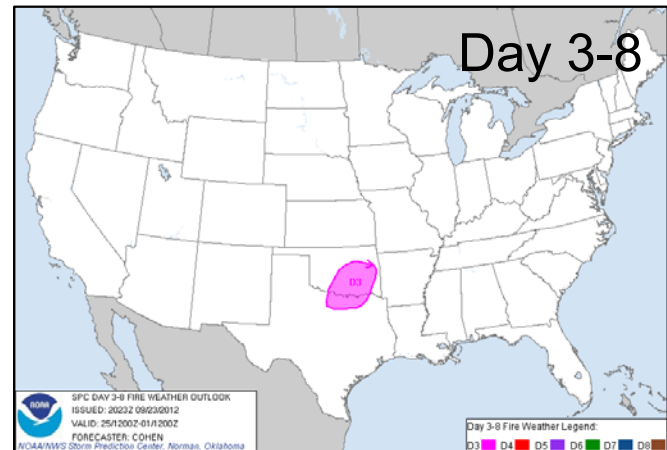
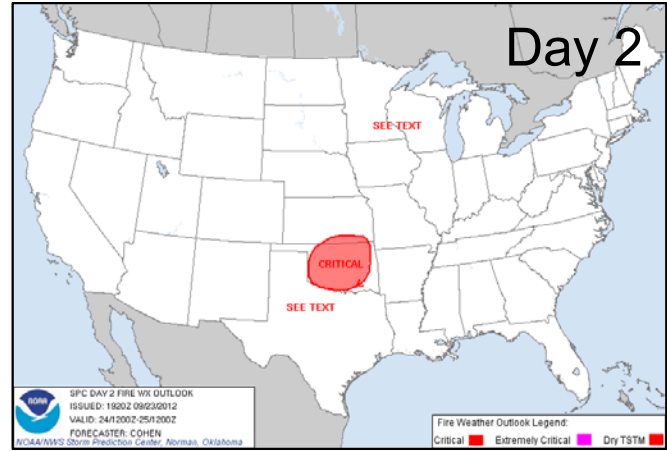
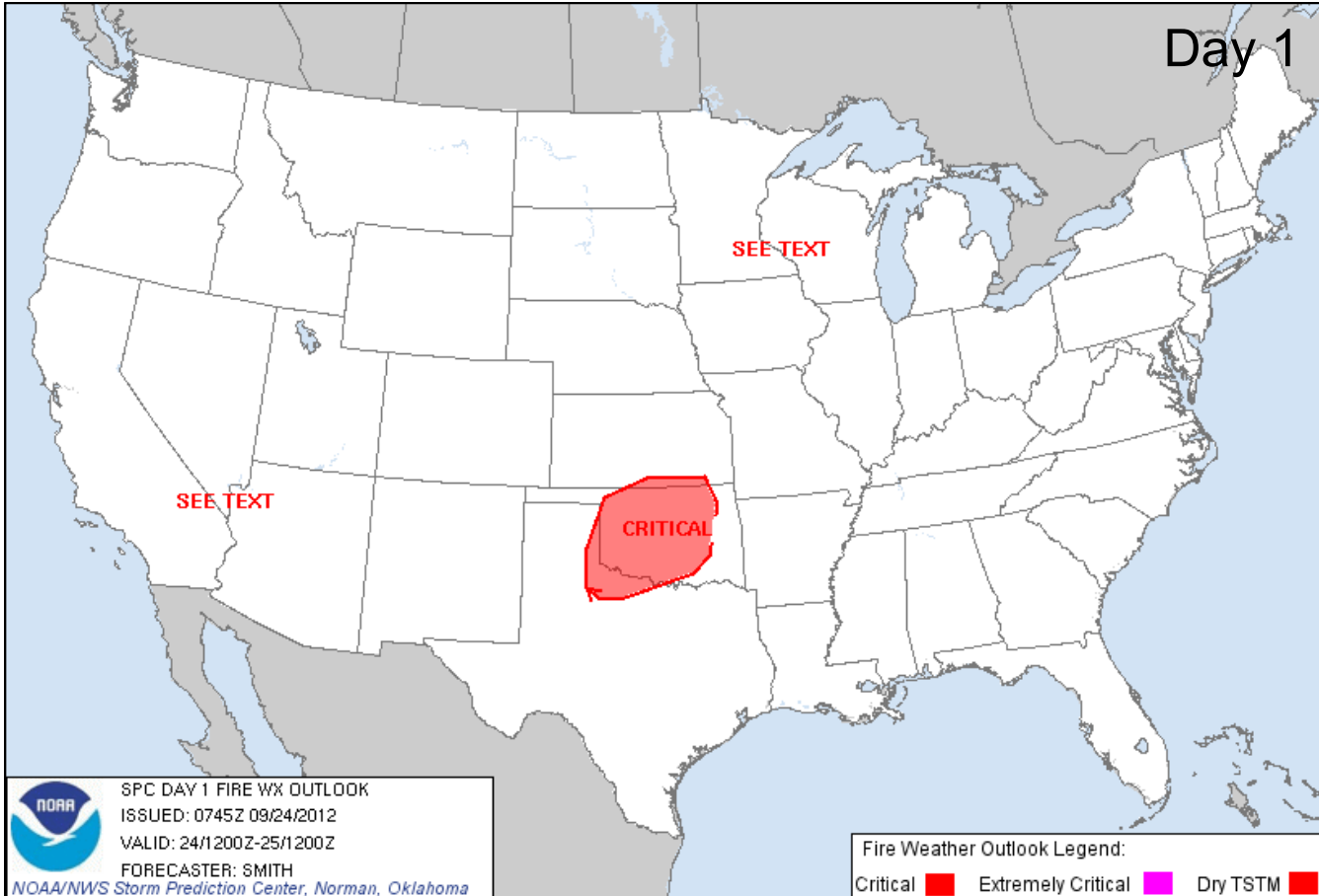
River Flood Outlook – 7 Day



Convective Outlook Days 1 – 3



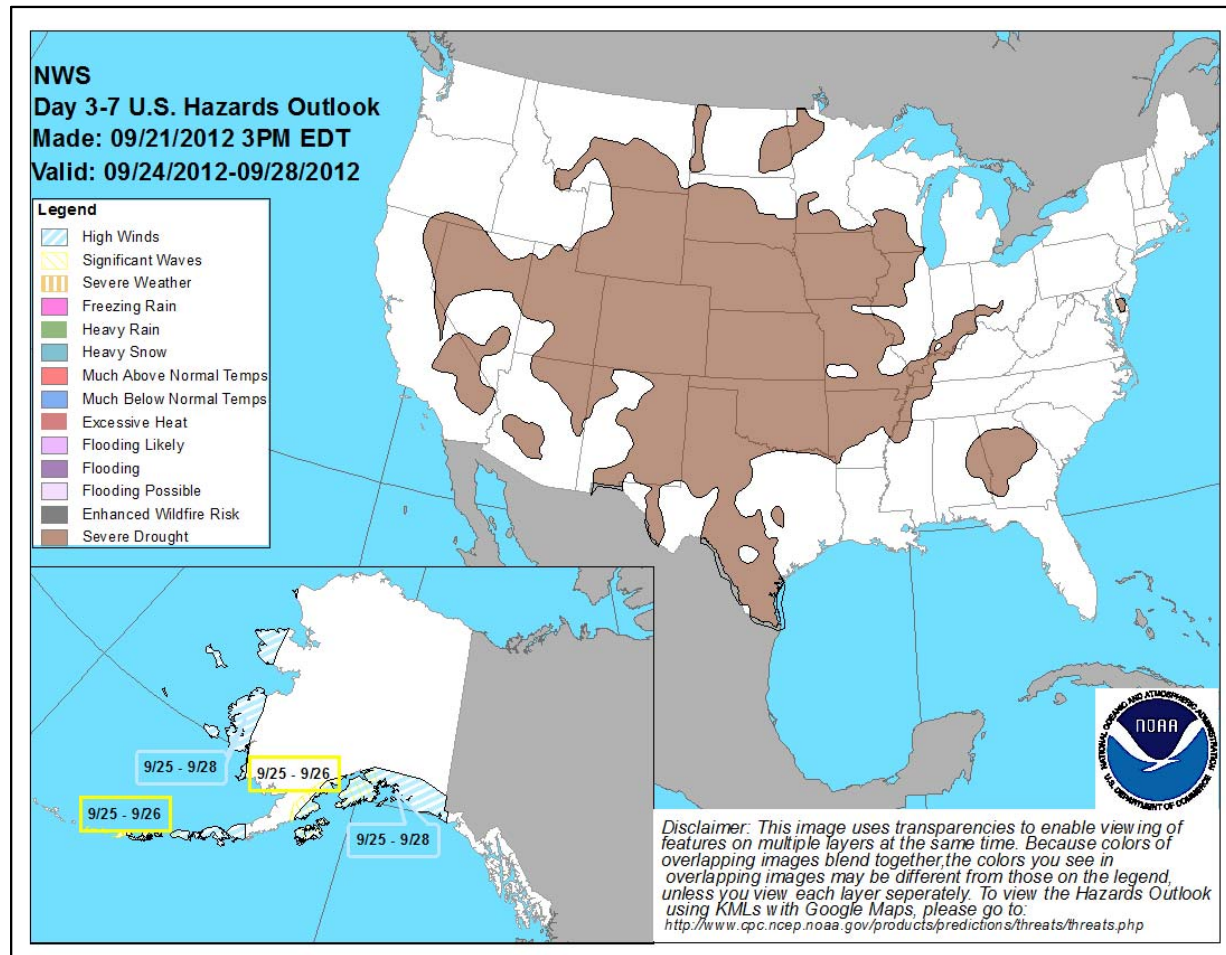
Critical Fire Weather Areas Days 1 – 8



Hazard Outlook: September 24 – 28



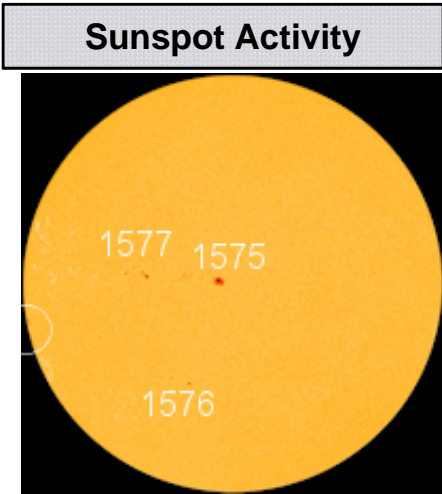
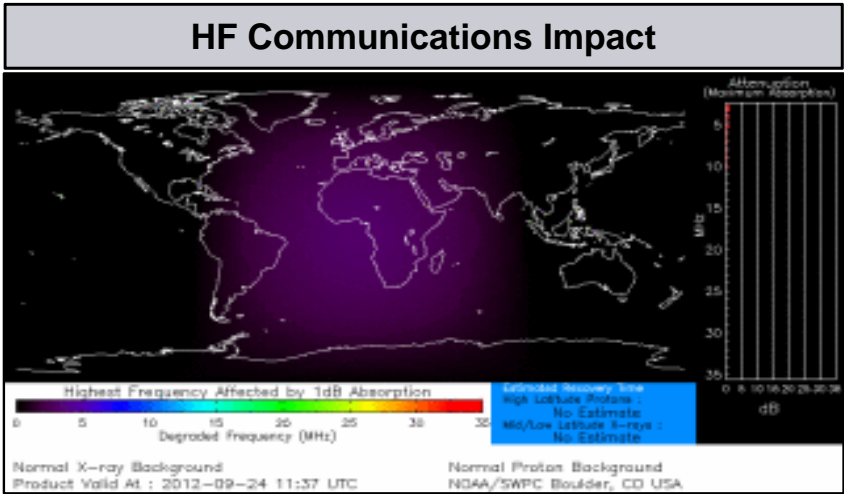
FEMA



Space Weather



NOAA Scales Activity Range 1 (minor) to 5 (extreme)	Past 24 Hours	Current	Next 24 Hours
Space Weather Activity:	None	None	None
• Geomagnetic Storms	None	None	None
• Solar Radiation Storms	None	None	None
• Radio Blackouts	None	None	None

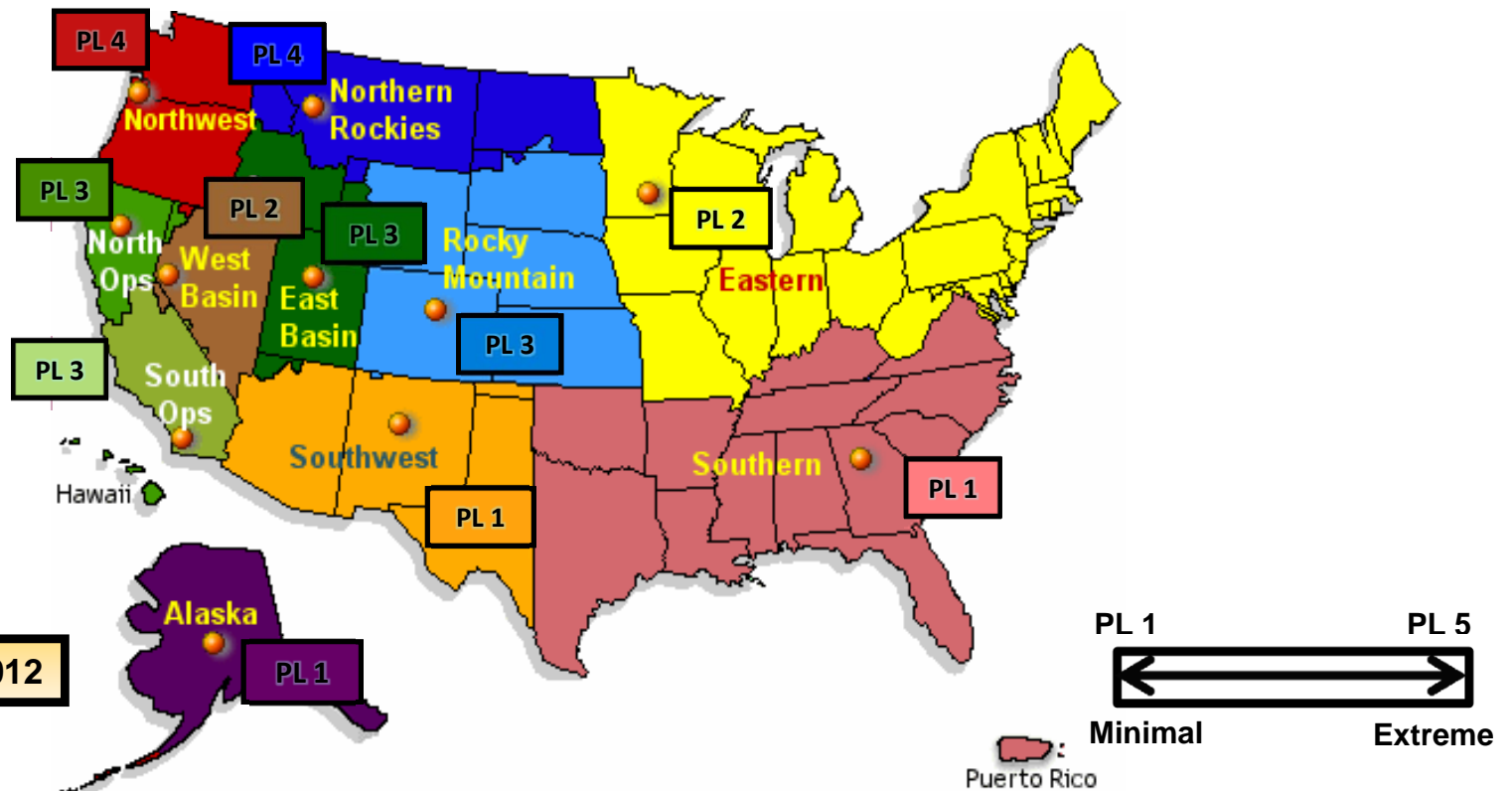


US Wildland Fire Preparedness Levels



National Preparedness Level: 3

Description: Two (2) or more Geographic Areas are experiencing wildland or prescribed fire activities requiring a major commitment of National Resources. Additional resources are being ordered and mobilized through NICC. Type 1 and 2 Incident Management Teams are committed in two (2) or more Geographic Areas and crew commitment nationally is at 50%.



As of September 24, 2012

National Fire Activity

September 24, 2012:

- National Preparedness Level: 3
- Initial Attack Activity: Light (56 new fires)
- New Large Fires: 4
- Large Fires Contained: 1
- Uncontained Large Fires: 35
- Area Command Teams committed: 0
- NIMOs committed: 0
- Type 1 IMT(s) committed: 6
- Type 2 IMT(s) Committed: 10
- States Affected: WA, OR, MT, ID, ND, CO, WY, & NV



Western Wildfire Summary



Fire Name (County)	FMAG #	Acres burned	% Contained	Evacuations (Type)	Structures Threatened	Structures Destroyed	Fatalities / Injuries
California (1)							
Shockey Fire (San Diego County)	FEMA-5021-FM-CA	1,700	10%	Yes (Mandatory)	305	4	0 / 0
Idaho (2)							
Mustang Complex (Lemhi County)	Not Requested	336,082 (+4,000)	22% (+2)	Yes (Voluntary)	495	7	0 / 7
McGuire Complex (Idaho County)	Not Requested	39,282	5% (+1)	Yes (Mandatory)	685 (-61)	3	0 / 7
Washington (2)							
Wenatchee Complex Fire (Chelan & Okanogan counties)	FEMA-5012-FM-WA FEMA-5015-FM-WA FEMA-5017-FM-WA FEMA-5018-FM-WA	42,508 (+347)	30% (+2)	Yes (Mandatory)	353	1	0 / 3
Table Mountain Complex Fire (Kittitas/Chelan Counties)	FEMA-5020-FM-WA	35,931 (+6,062)	10% (+3)	Yes (Mandatory)	800	2	0/2

***Note: The changes are from Friday, September 21, 2012**



FEMA

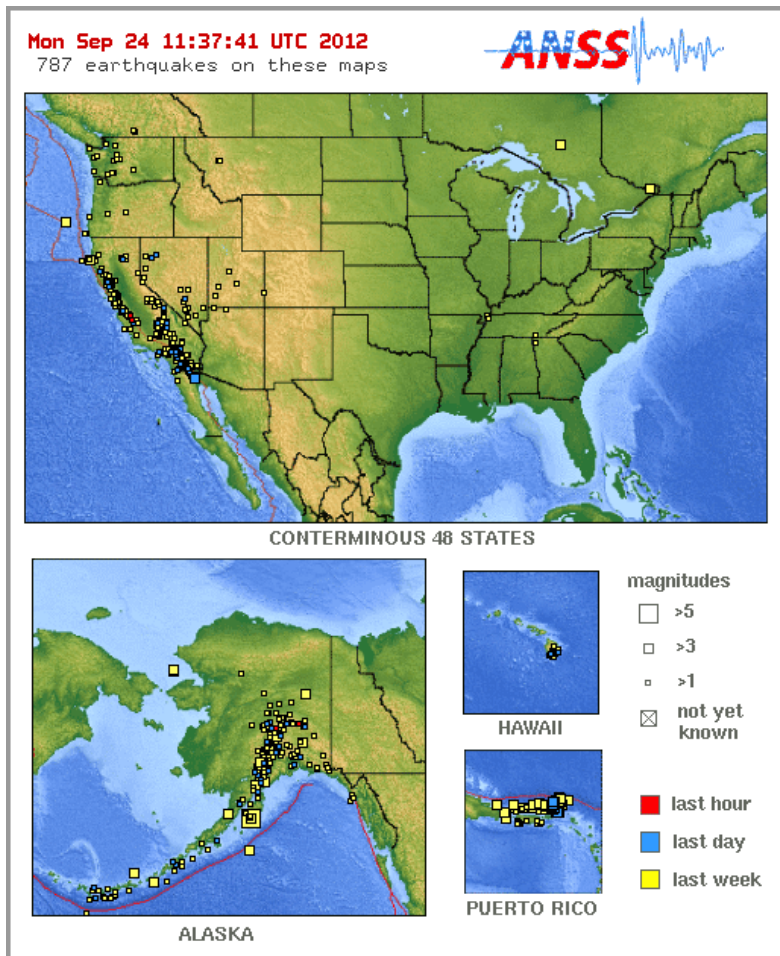
Shockey Fire, CA

Fire Name	Location	Acres burned	% Contained	Est. Full Containment	FMAG	Structures Lost / Threatened	Fatalities / Injuries
Shockey Fire	San Diego County	1,700	10%	unknown	FEMA-5021-FM-CA Approved 9/24/12	4 / 305	0 / 0

- Fire began on September 23, 2012 in and around Boulevard and Jacumba (est. pop 1,200) CA
- Mandatory evacuations in effect for 600 residents in the Tierra Del Sol, Jewell Valley & Boulevard areas
- 1 shelter opened in Pine Valley
- 305 structures are threatened
 - 250 primary homes and 55 outbuildings
- State EOC is at normal operations
- FEMA Region IX monitoring



Significant Earthquake Activity



- No significant activity

FMAG Requests and Declarations



Action (since last report)	Total	FMAG No. and State
Requests DENIED	0	
Requests APPROVED	1	FEMA-XXXX-FM-California
Requests Expected Next 24 Hours	0	

As of September 24, 2012	2012	2011*
FMAGs Approved	48	112
FMAGs Denied	15	34
* Cumulative FMAG figures as of this date in 2011		

Disaster Requests & Declarations



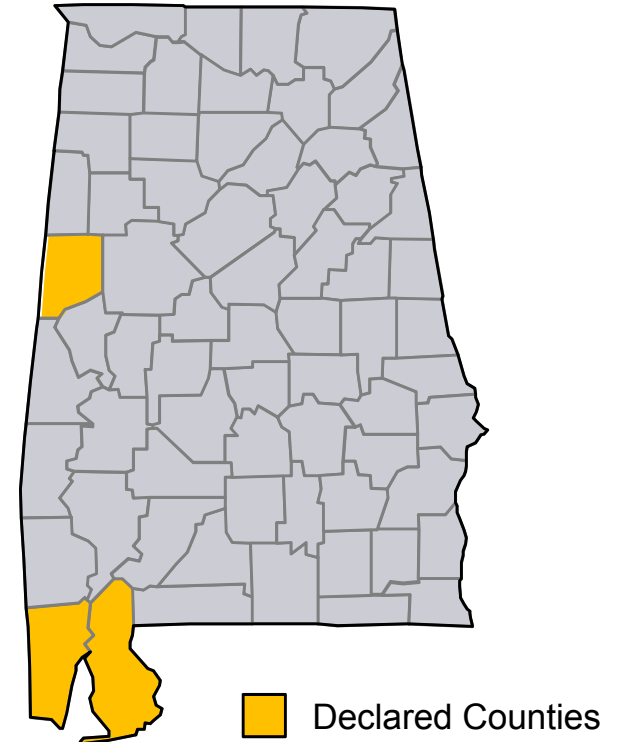
Declaration Requests in Process		Requests APPROVED (since last report)	Requests DENIED (since last report)
1	Date Requested	1	1
NE – DR Wildfires	August 28, 2012		Denied September 21, 2012
WA – DR Severe Storm	September 7, 2012		
AL – DR Hurricane Isaac	September 11, 2012	Declared September 21, 2012	

Major Disaster Declaration – Alabama



FEMA-4082-DR-AL

- Declared September 21, 2012
- For Hurricane Isaac from August 26 to September 5, 2012
- Public Assistance for Baldwin, Mobile & Pickens counties
- Hazard Mitigation statewide
- FCO is Joe M. Girot



Disaster Amendments



Declaration Amendment Number	Effective Date	Amendment Action
Amendment No. 12 for FEMA-4080-DR-LA	September 21, 2012	Adds 8 parishes for Public Assistance



FEMA

OFDC Cadre Member Status

Federal Coordinating Officer

Deployed	Detailed	Available	Not Available	Total
21	1	12	2	36
Total Available	Type 1	Type 2	Type 3	Type 4
13*	1*	5	3	3

* All Type 1 FCOs are available unless deployed to a Level 1 event

Federal Disaster Recovery Coordinator

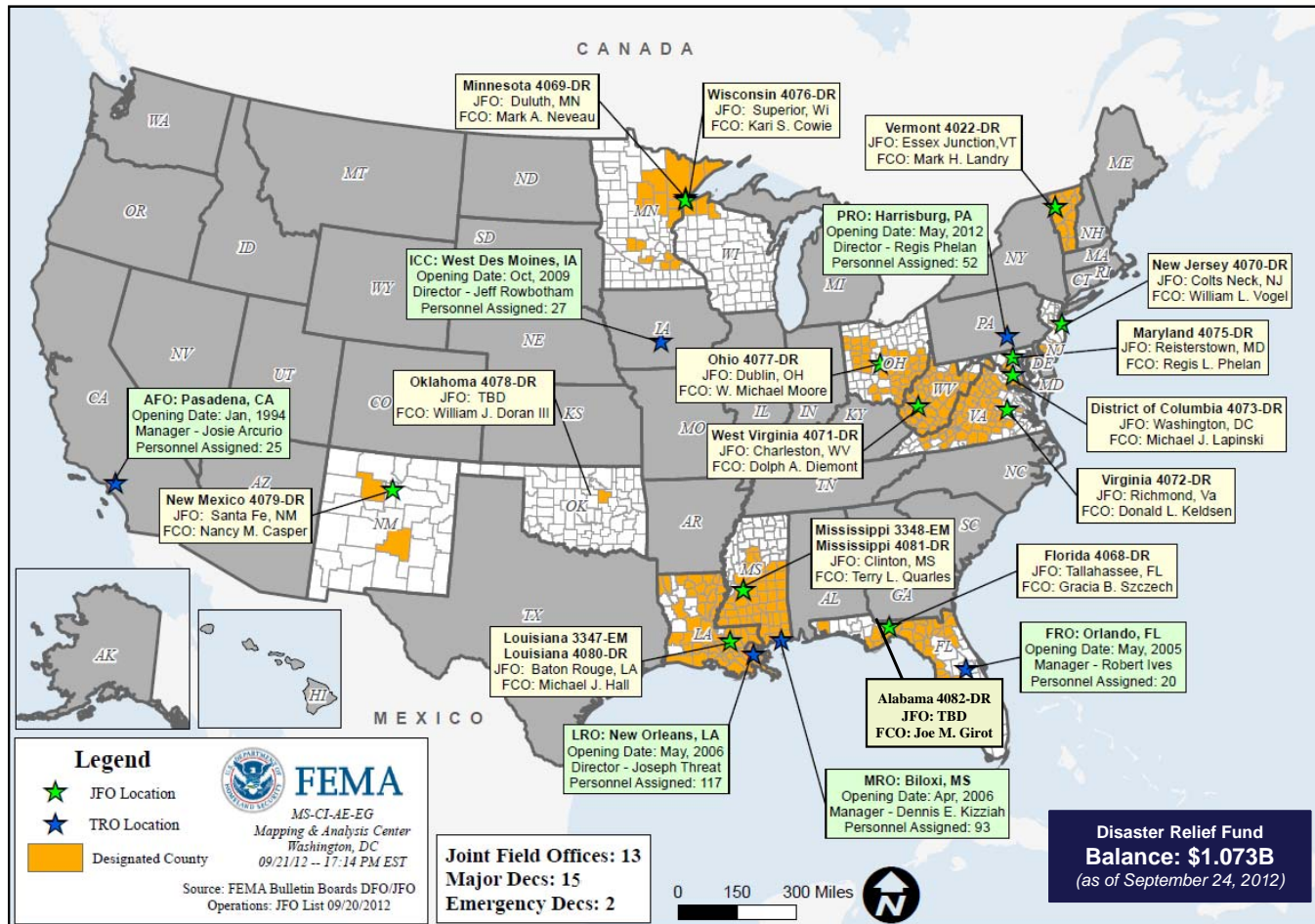
Positions	On Board	Available	Deployed	Pending Hire
10	5	3	2	0

As of: 09/21/2012 28

Open Field Offices as of September 24, 2012



FEMA



Joint Preliminary Damage Assessments



				Number of Counties			
Region	State	Event	IA/PA	Requested	Ongoing	Complete	Start – End
VI	LA	Hurricane Isaac August 26, 2012 and continuing	IA	25	0	25	8/31 – 9/14
			PA	40	14	26	8/31 – TBD
VI	OK	August Wildfires	PA	5	5	0	9/18 - TBD
VII	NE	Wildfires August 27 – September 10, 2012	PA	3	0	3	9/17 – 9/20

MCOV Fleet / Deployment Status

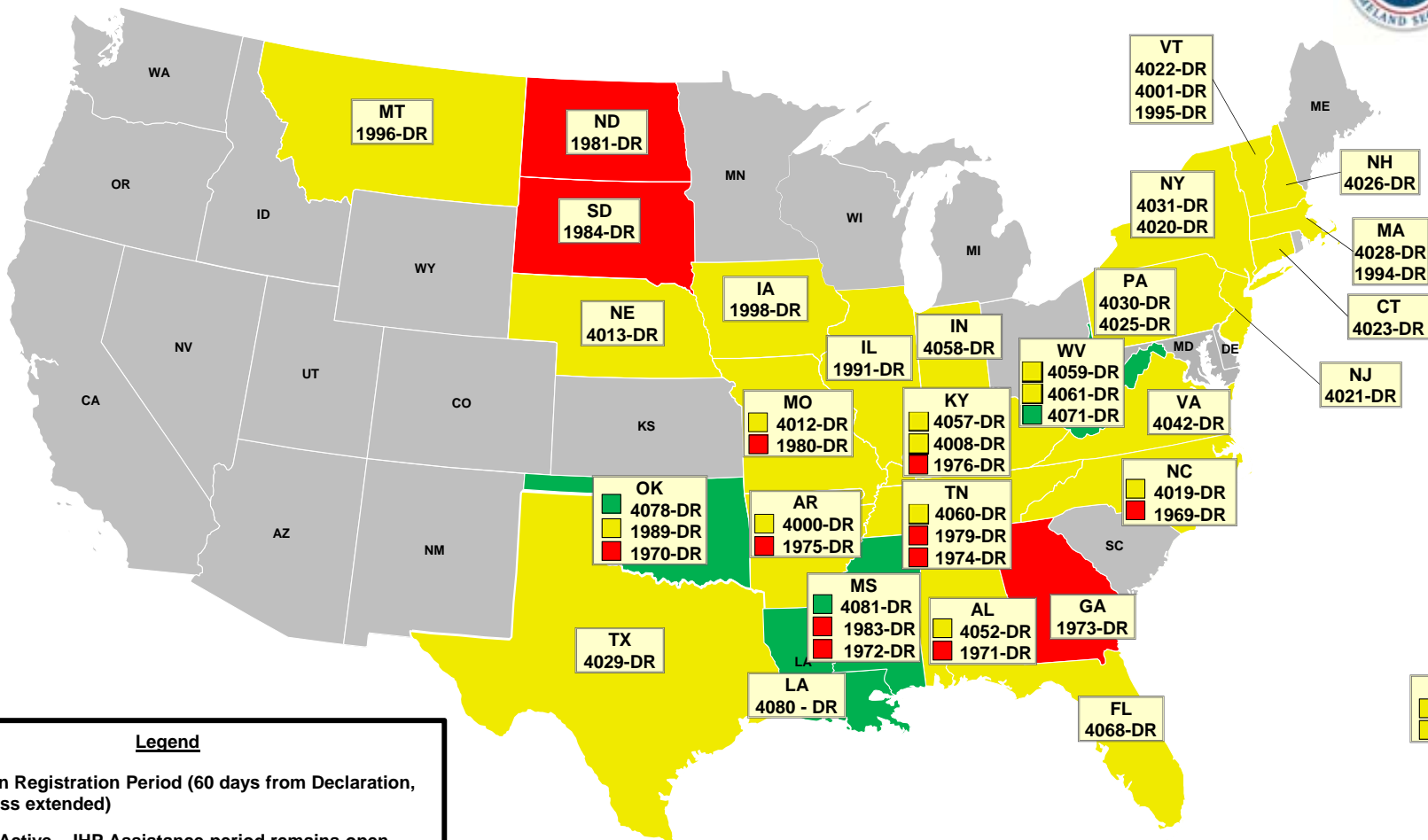


MCOV FLEET STATUS						MCOV DISASTER SUPPORT DEPLOYMENTS					
Location	Units Assigned	Available FMC	Deployed Committed	PMC	NMC	DR-State	OPCON	En Route	Unit Prep	Open Request	Notes:
DC Atlanta	21	1	18		2	LA-4080-DR	23				
DC Cumberland	10	3	7			MS-4081-DR	16				
DC Ft Worth	14	0	12		2	WV-4071-DR		1			
DC Moffett	6	6									
Holliston, MA	1	0	1								
Denver, CO	2	0	2								
Bothell, WA	2	2									
TOTAL	56	12	40	0	4	TOTAL	39	1	0	0	
Included in above totals, units en route for turn-in.											

Fully Mission Capable	52
Partially Mission Capable	0
Non-Mission Capable	4
Total Not Deployed	16

Data as of: 09/23/12 @ 1500

Active IA Disasters



# of DRs	Legend
4	Open Registration Period (60 days from Declaration, unless extended)
32	IHP Active – IHP Assistance period remains open (18 Months from Declaration)
13	IHP Closing Within 60 Days

Data as of: 09/23/12 @ 1500

IA Registration Statistics



Cumulative as of September 23, 2012 @ 1500

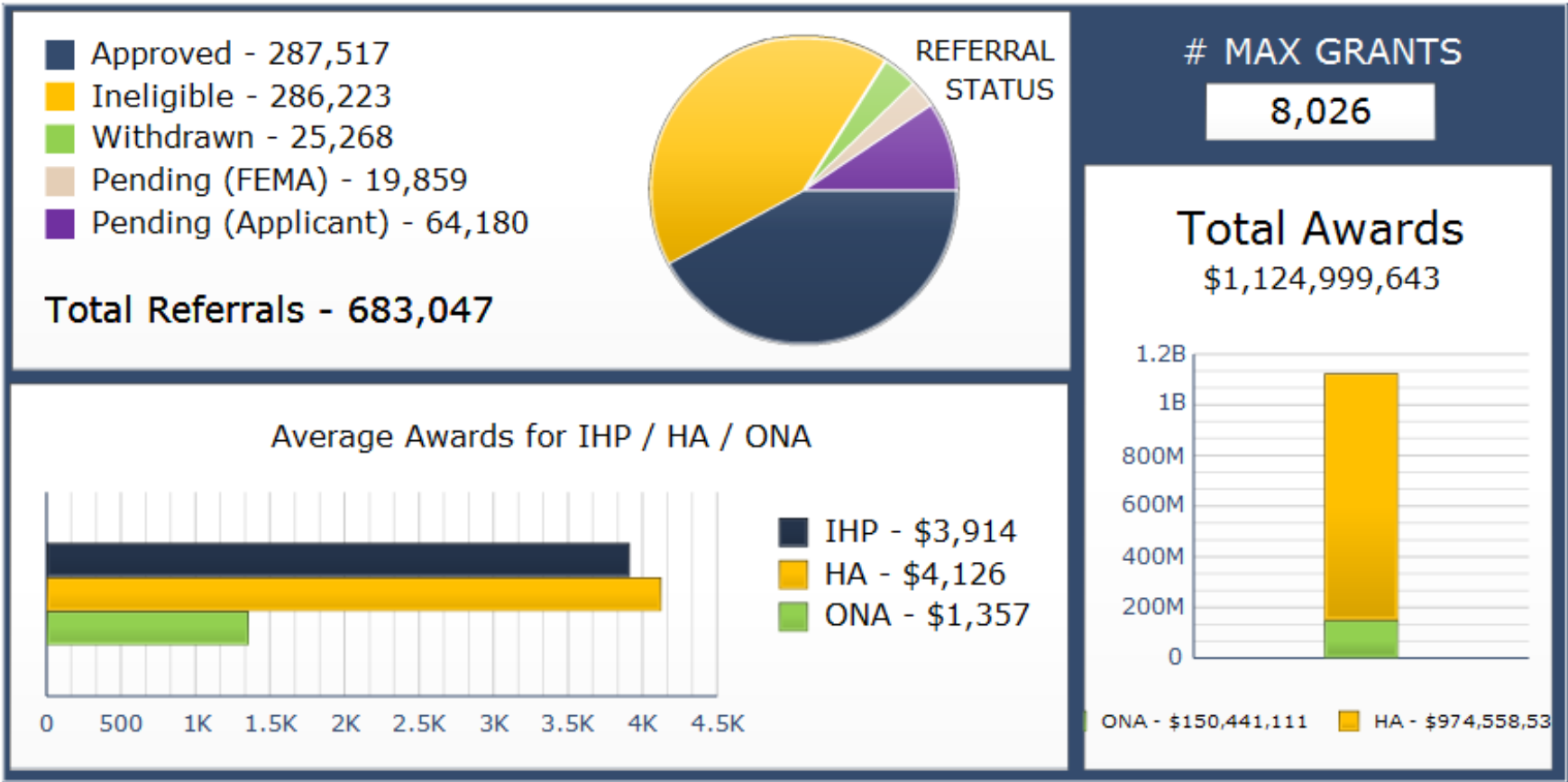
DR # - State	Registrations	Approved Applicants	Total HA Approved	Total ONA Approved	Total IHP Approved
4071 - WV	305	25	\$113,245	\$0	\$113,245
4078 - OK	581	255	\$4,008,835	\$461,663	\$4,470,499
4080 - LA	186,998	35,459	\$72,366,290	\$14,977,570	\$87,343,859
4081 - MS	21,436	4,974	\$9,814,845	\$1,687,566	\$11,502,411
Totals	209,320	40,713	\$86,303,214	\$17,126,798	\$103,430,014
Change since 1500 - 9/20	+3,239	+1,302	+\$2,512,794	+\$611,506	+\$3,132,290

NPSC Call Data for September 23, 2012

Total NPSC Calls Answered (Helpline + Registration Intake)	2,932
Average time to answer call	1 minute 7 seconds



IHP Referral Status & Awards



Data includes the 49 IHP Active DRs
 # Max Grants = Applicants awarded maximum IHP (\$31,400 as of FY2012)

Data as of: 09/23/12 @ 1500

Housing Inspection Statistics



Data as of September 23, 2012 @ 1600					
DR # - State	Inspectors	Inspections Assigned	Inspections Completed	Inspection % Complete	Turnaround Time (Days)
4071 - WV	9	180	56	31.1%	1.2
4078 - OK	2	366	361	98.6%	1.7
4080 - LA	155	123,276	120,449	97.7%	3.8
4081 - MS	37	16,323	15,688	96.1%	3.1
TOTAL	203	140,145	136,554	97.4%	3.7
Change since 1600 – 9/20	-60	+2,810	+4,542	+1.3%	-0.0

IMAT Status



FEMA

National Teams					
Team	Status	Team	Status	Team	Status
BLUE (East)	LA	WHITE (Central)	MS	RED (West)	LA
Regional Teams					
Team	Status	Team	Status	Team	Status
Region I	Available/Mission Capable	Region V	Available/Mission Capable	Region IX-1	Available/Mission Capable
Region II	Available/Mission Capable	Region VI-1	LA	Region IX-2	Available/Partially Mission Capable
Region III	VA	Region VI-2	OK	Region X	Available/Mission Capable
Region IV-1	Available/Mission Capable	Region VII	Reconstituting		
Region IV-2	Available/Mission Capable	Region VIII	Available/Mission Capable		

■ = Available/Mission Capable ■ = Assigned/Deployed
■ = Available/Partially Mission Capable ■ = Out-of-Service

Urban Search & Rescue



FEMA

INCIDENT SUPPORT TEAMS (Red-White-Blue) – Monthly On Call Rotation											
JAN	FEB	MAR	APR	MAY	JUN	JUL	AUG	SEP	OCT	NOV	DEC
WEST				CENTRAL				EAST			
Team	Status	Team	Status	Team	Status	Team	Status	Team	Status	Team	Status
CA-TF1	Available	AZ-TF1	Available	FL-TF1	Available						
CA-TF2	Available	CO-TF1	Available	FL-TF2	Available						
CA-TF3	Available	IN-TF1	Available	MA-TF1	Available						
CA-TF4	Available	MO-TF1	Available	MD-TF1	Available						
CA-TF5	Available	NE-TF1	Available	NY-TF1	Available						
CA-TF6	Available	NM-TF1	Non-operational	PA-TF1	Conditionally Available						
CA-TF7	Available	NV-TF1	Conditionally Available	VA-TF1	Available						
CA-TF8	Available	TN-TF1	Conditionally Available	VA-TF2	Available						
WA-TF1	Available	TX-TF1	Available	OH-TF1	Available						
		UT-TF1	Available								

= Available/Mission Capable
 = Assigned/Deployed
 = Available/Partially Mission Capable
 = Out-of-Service

RRCC / Regional Watch Center Status



Region	RRCC	Regional Watch Center
I	Watch/Steady State	Maynard MOC (24/7)
II	Watch/Steady State	24/7
III	Watch/Steady State	24/7
IV	Watch/Steady State	24/7
V	Watch/Steady State	24/7
VI	Watch/Steady State	Denton MOC (24/7)
VII	Level III (Monitoring 24/7)	24/7
VIII	Watch/Steady State	Denver MOC (24/7)
IX	Watch/Steady State	24/7
X	Watch/Steady State	Bothell MOC (24/7)

National Team Status



Team/Status	Current Location	Remarks
National Watch Center	Washington, DC	Enhanced Watch (8:00 a.m. – 6:00 p.m. EDT)
NRCC	Washington, DC	Not Activated
HLT	Miami, FL	Activated
DEST	Washington, DC	Not Activated
Mission Capable	Partially Mission Capable	Not Mission Capable



FEMA

FEMA's mission is to support our citizens and first responders to ensure that as a nation we work together to build, sustain, and improve our capability to prepare for, protect against, respond to, recover from, and mitigate all hazards.