



# **FEMA**

## **Daily Operations Briefing**

### **September 4, 2012**

### **As of 8:30 a.m. EDT**

# Significant Activity: September 3-4

**Significant Events:** Isaac Response/Recovery Operations

**Tropical Activity:**

- Atlantic - Tropical Storm Leslie; Tropical Depression Thirteen
- Eastern Pacific - Tropical Depression John
- Central Pacific - No tropical cyclones expected through Wednesday evening
- Western Pacific – No activity

**Significant Weather:**

- Slight risk of severe thunderstorms – across parts of the Middle Missouri Valley & Upper Mississippi Valley
- Heavy rain & thunderstorms expected for the Northeastern U.S.
- Flash Flooding possible – Gulf Coast & Northeast
- Critical Fire Weather Areas: portions of Wyoming, Nebraska Panhandle, South Dakota & Montana
- Red Flag Warnings: MT, ID, WY, NE, SD & ND
- Space Weather: Moderate; G2 & S1 Level occurred/minor; S1 level expected

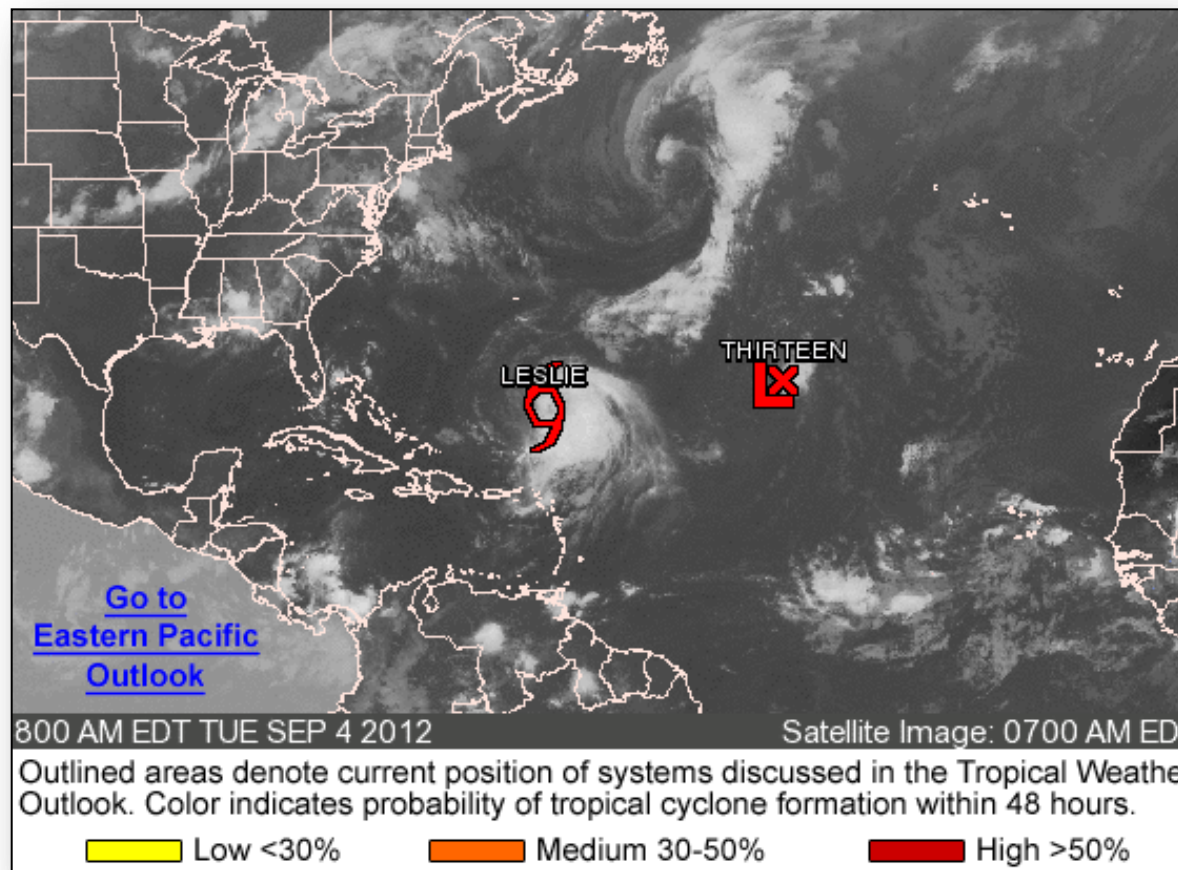
**Earthquake Activity:** No significant activity

**Disaster Declaration Activity:** No activity

# Atlantic – Tropical Outlook



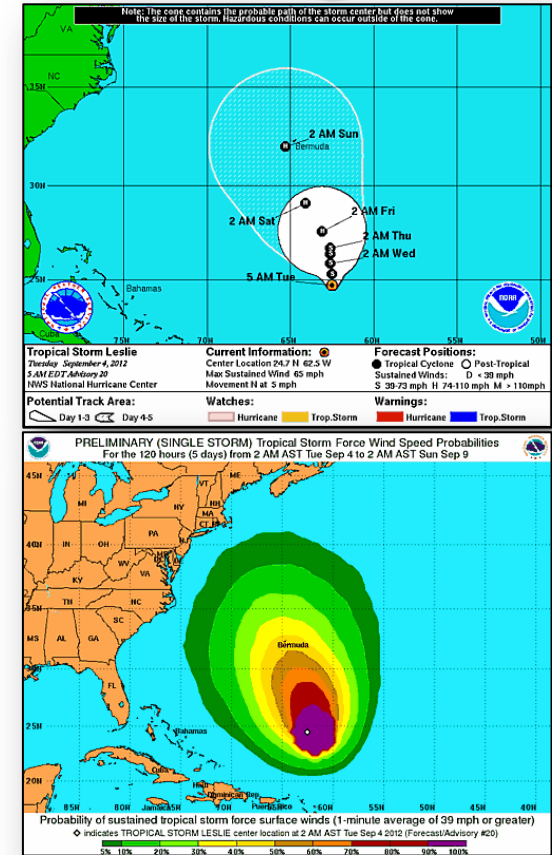
FEMA



# Atlantic – Tropical Storm Leslie

As of 5:00 a.m. EDT

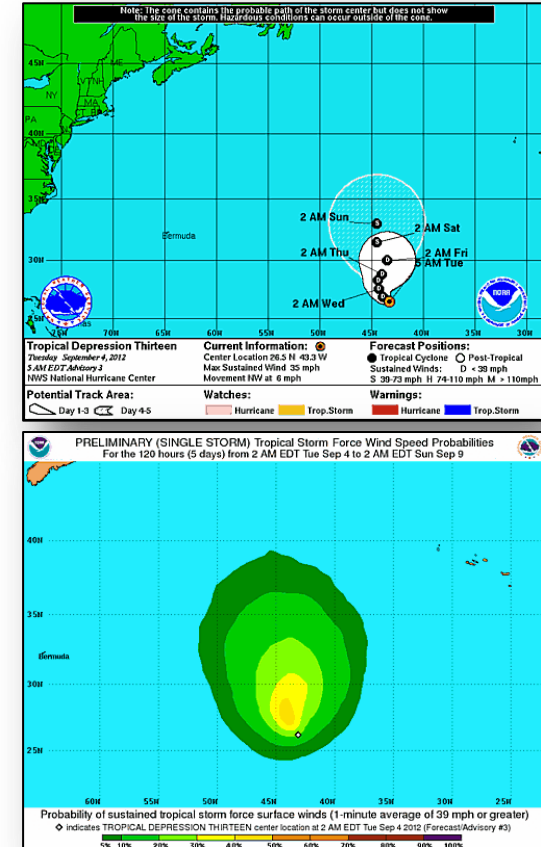
- 545 miles SSE of Bermuda
- Moving north near 5 mph
- Maximum sustained winds 65 mph, with higher gusts
- A slow northward motion; which may be erratic is expected over the next couple of days
- Little change in strength is expected during the next couple of days
- Tropical storm-force winds extend outward 205 miles
- Swells generated by Leslie could affect portions of the Leeward Islands, Puerto Rico, the Virgin Islands, and the East Coast from Florida northward for the next several days



# Atlantic – Tropical Depression Thirteen

## As of 5:00 a.m. EDT

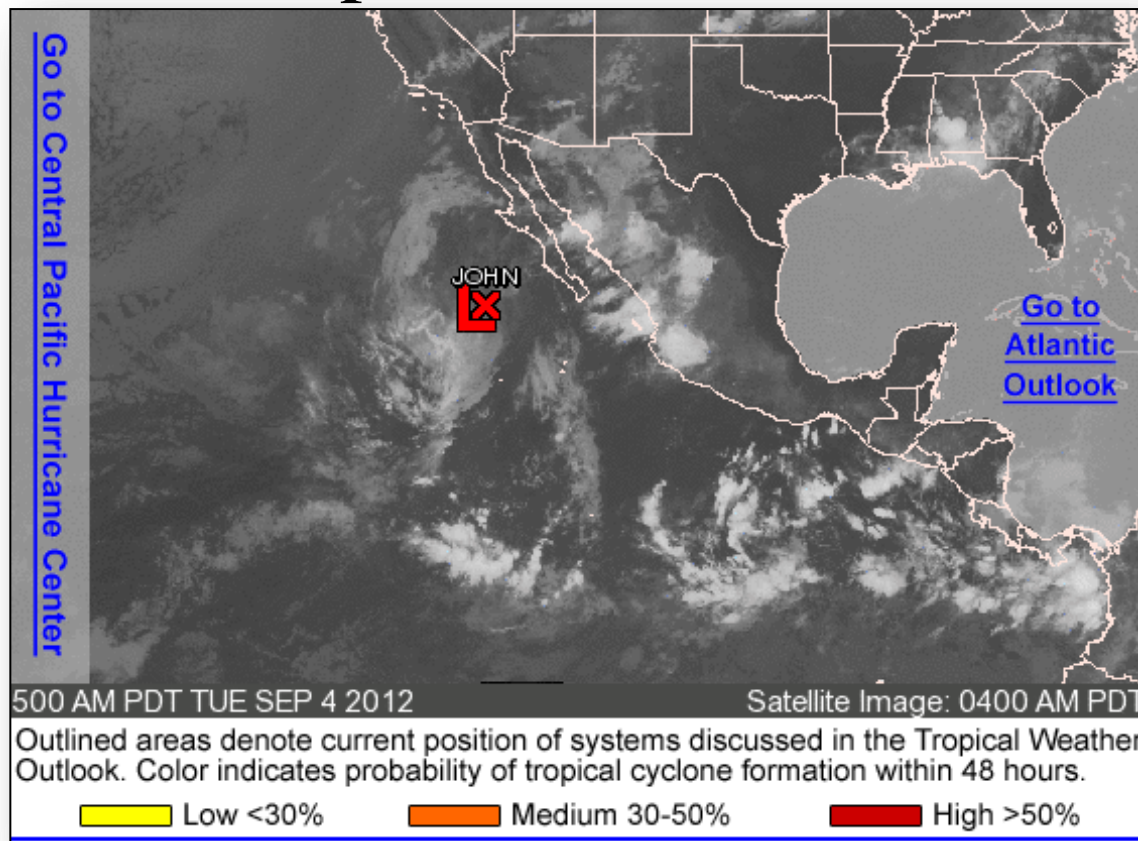
- Center of Tropical Depression Thirteen was located 1,435 miles NW of the Cape Verde Islands
- Moving northwest near 6 mph
- Maximum sustained winds are near 35 mph, with higher gust
- This general motion is expected today; followed by a turn toward the north-northwest and north on Wednesday
- Little change in strength is forecast during the next 48 hours



# Eastern Pacific – Tropical Outlook



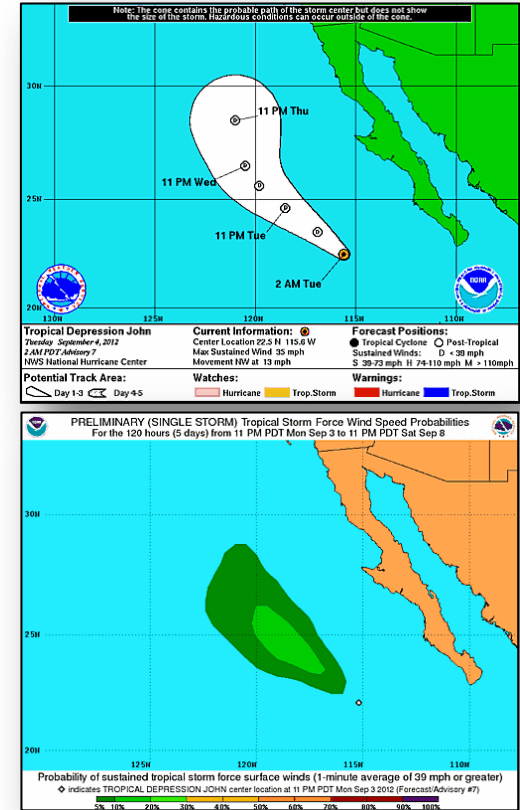
FEMA



# Eastern Pacific - Tropical Storm John

As of 5:00 a.m. EDT

- Located 365 miles W of the southern tip of Baja California, Mexico
- Moving NW at 13 mph
- Maximum sustained winds are at 35 mph, with higher gusts
- This motion is forecast to continue today; followed by a turn toward the north with a decrease in forward speed on Wednesday
- Some weakening is forecast during the next 48 hours
- John is expected to become a remnant low later today

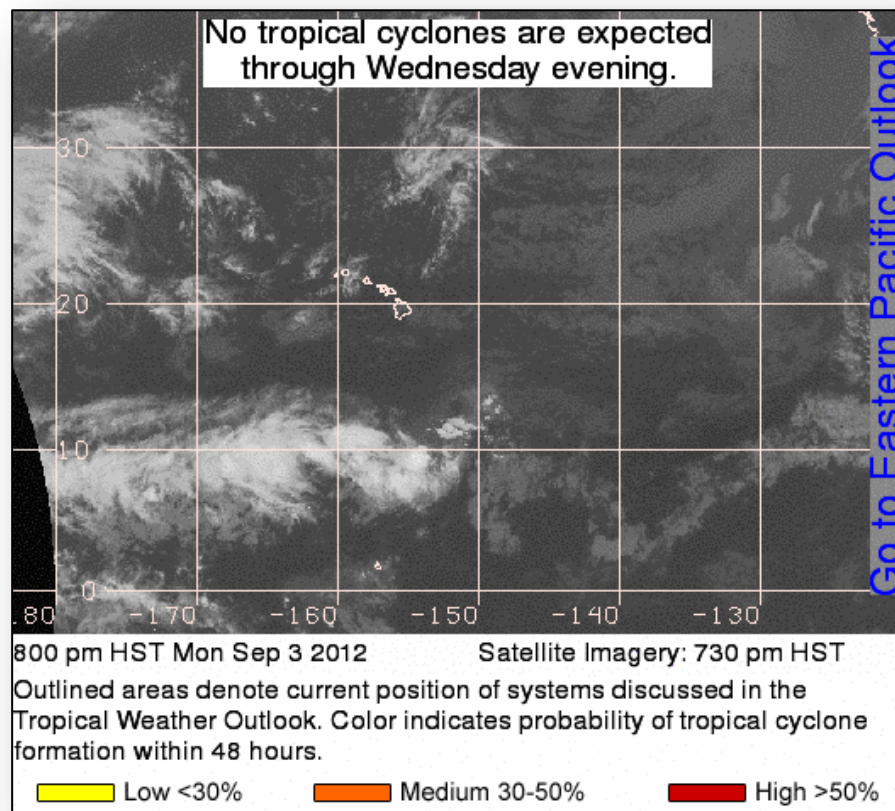




# Central Pacific – Tropical Outlook



FEMA

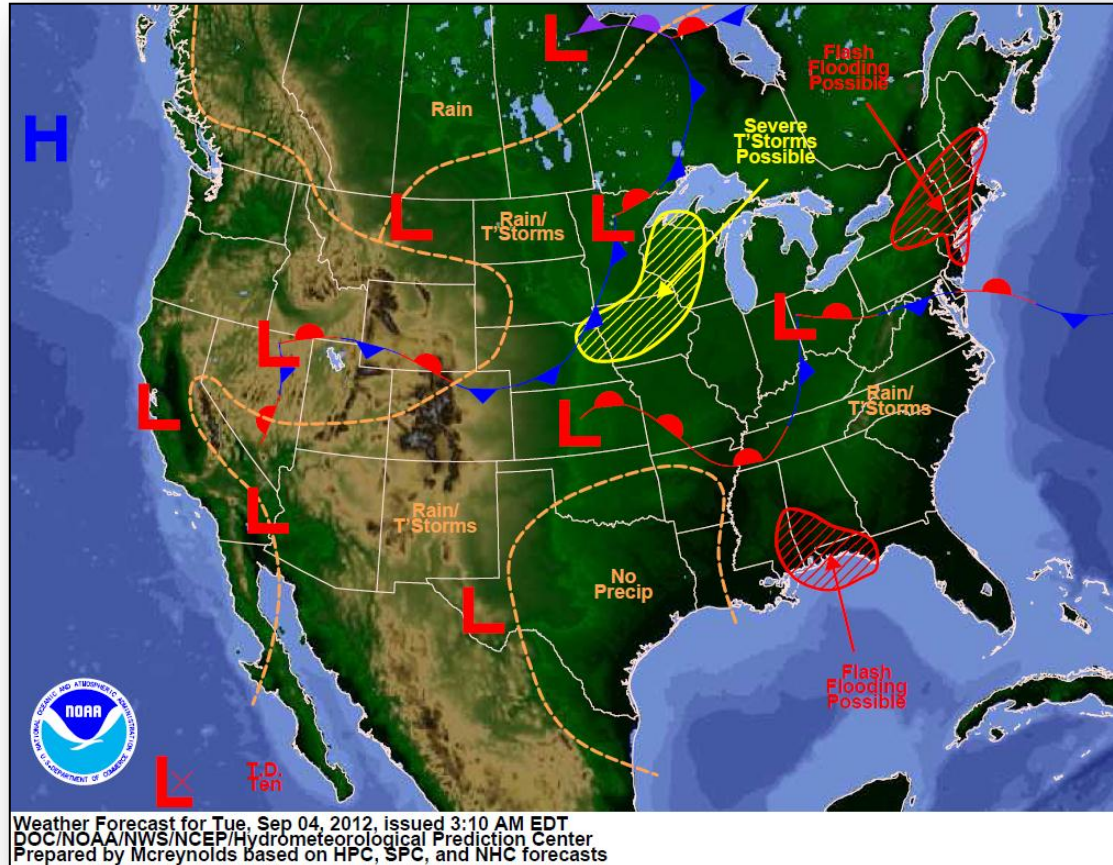




# National Weather Forecast



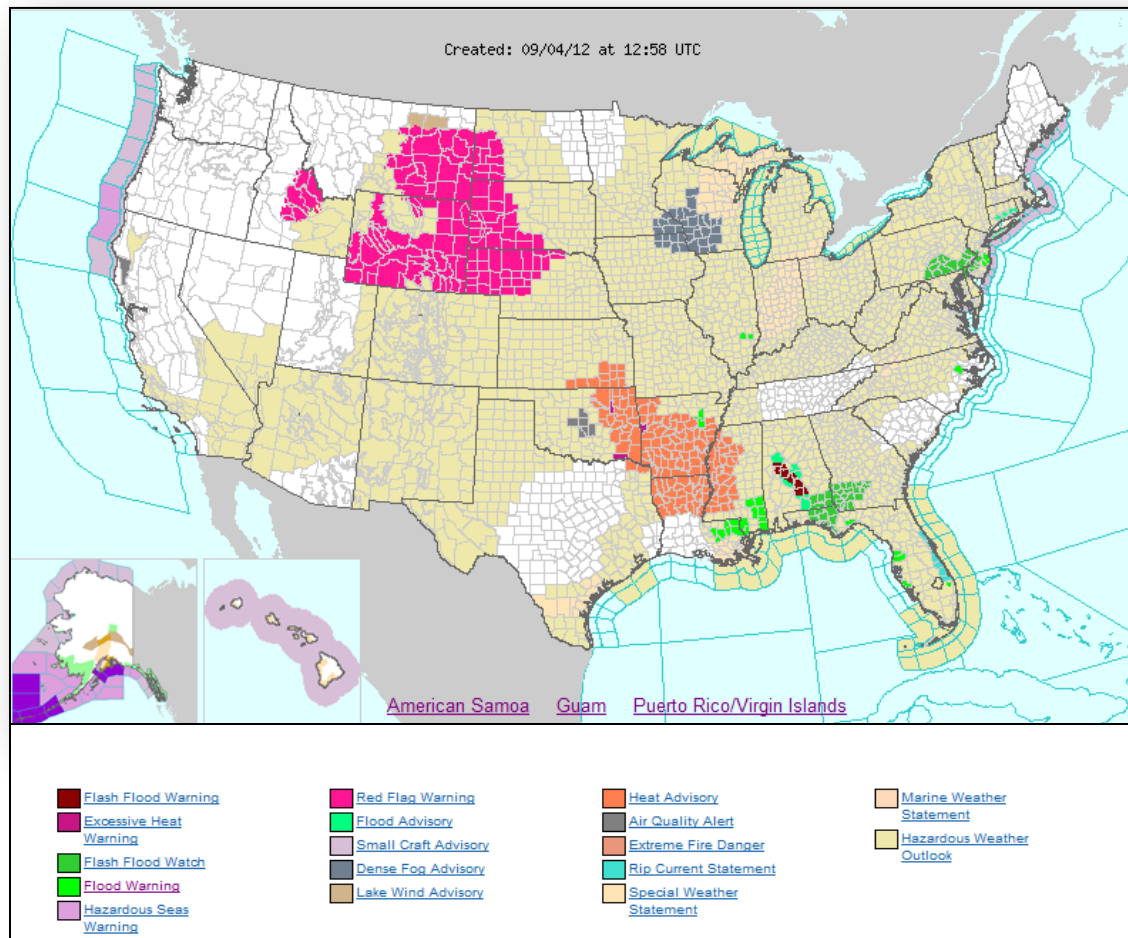
FEMA



# Active Watches/Warnings



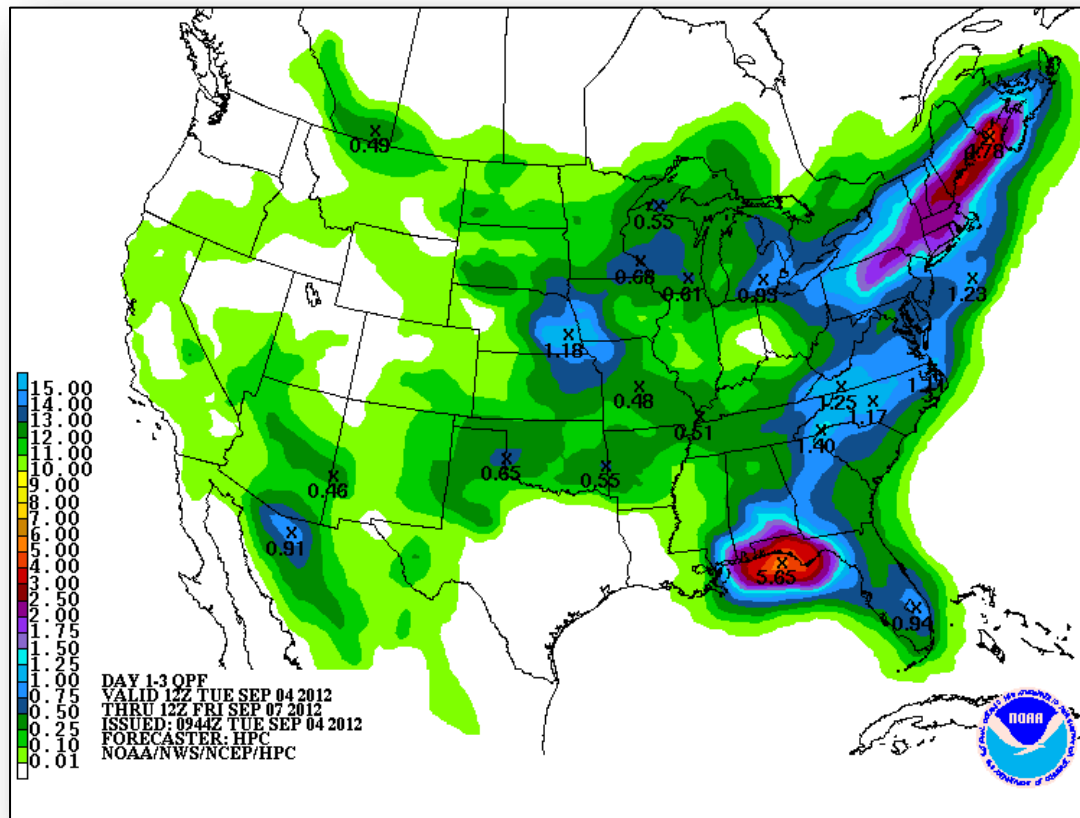
FEMA



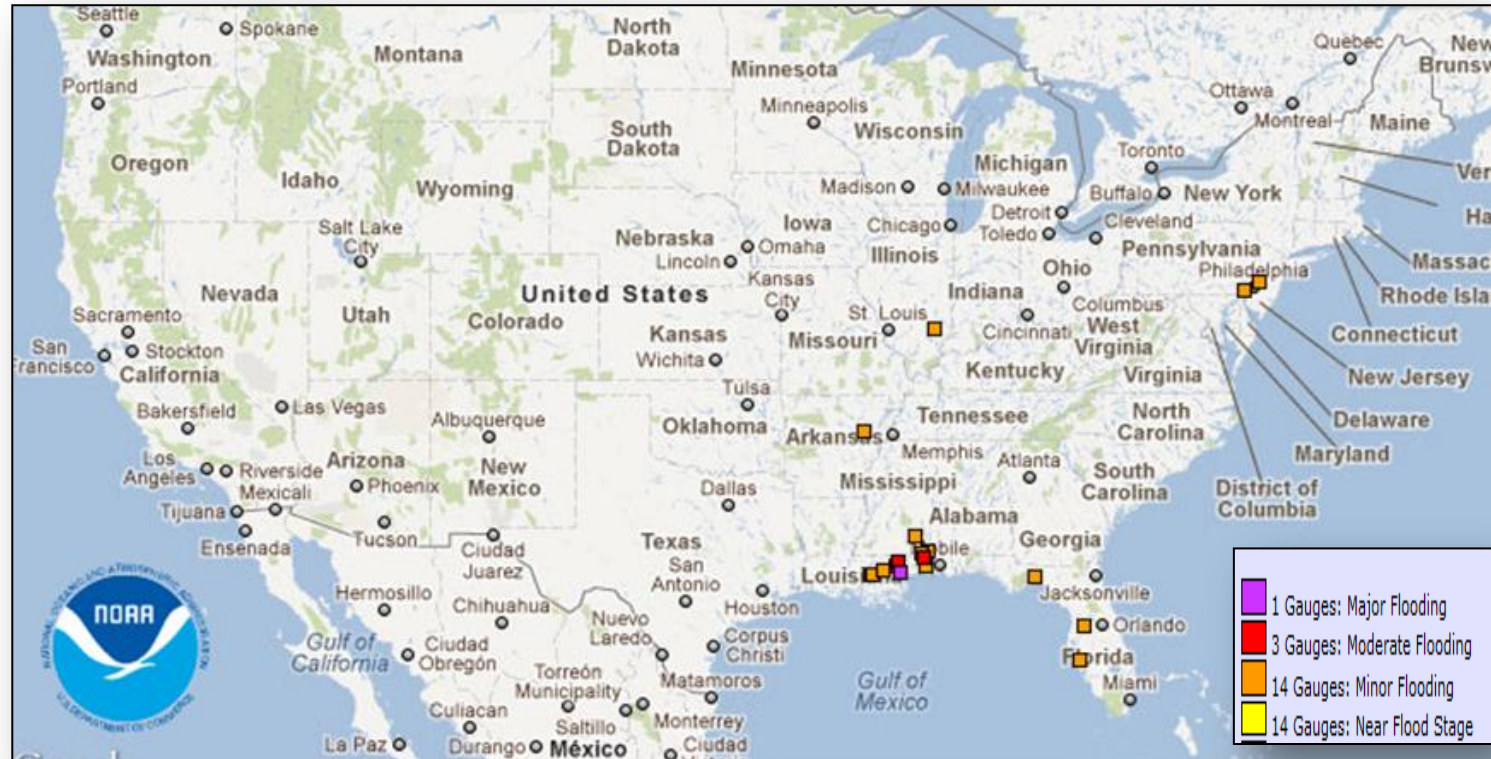
# Precipitation Forecast – 1-3 Day



FEMA

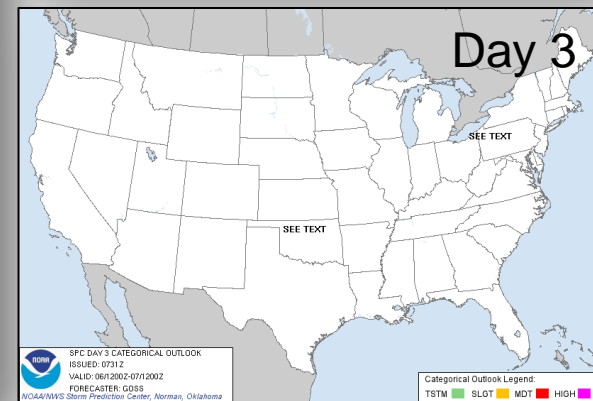
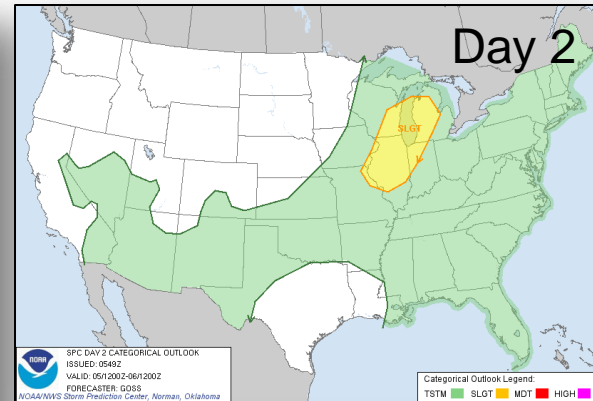
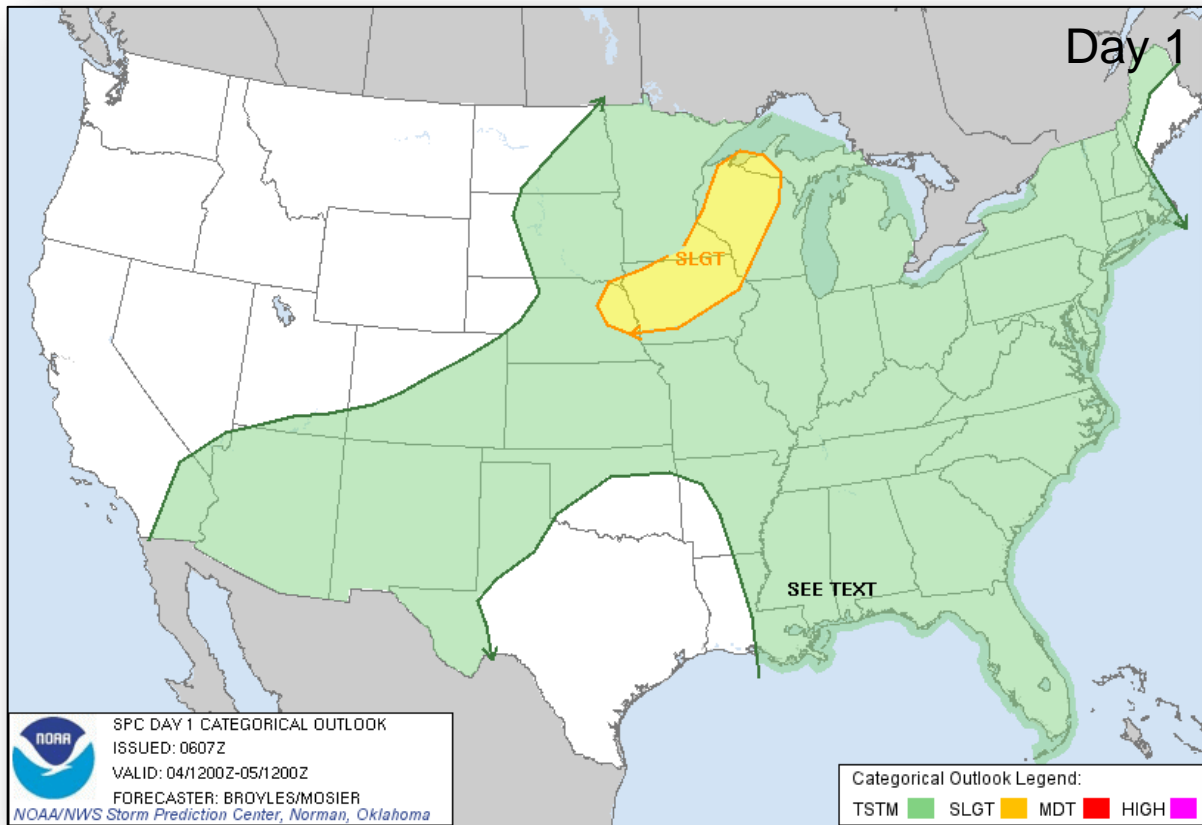


# River Flood Outlook – 7 Day





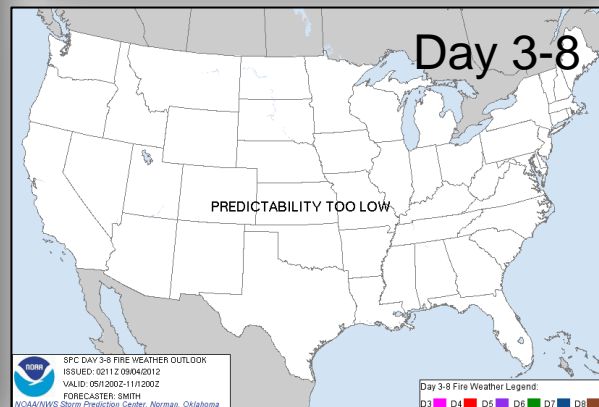
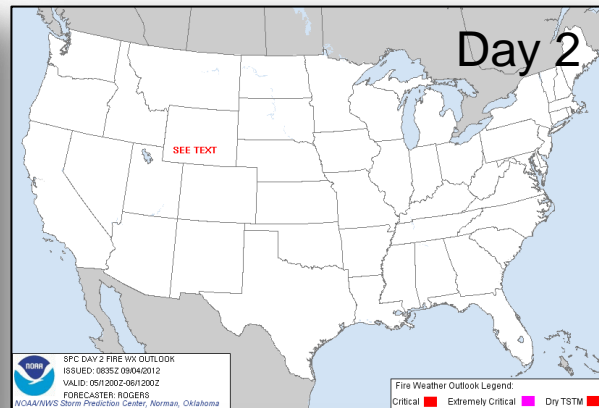
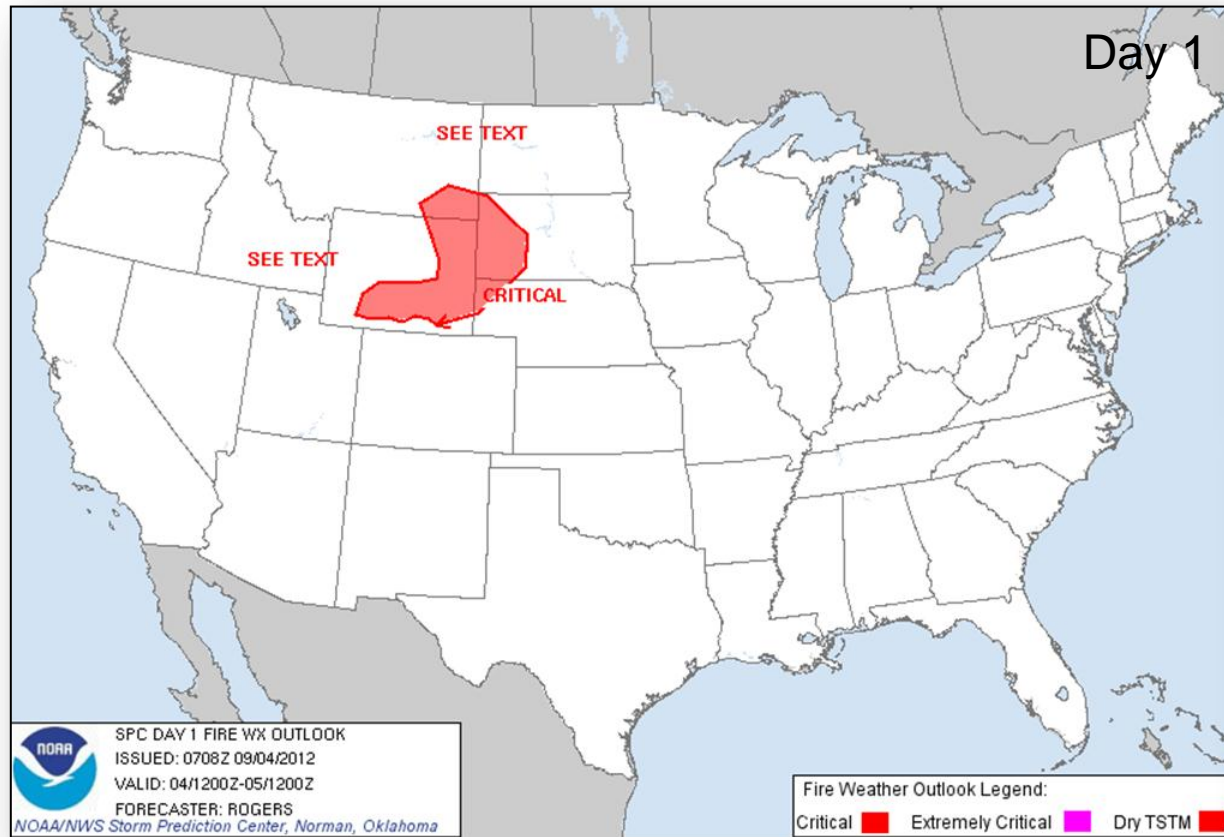
# Convective Outlook Days 1-3



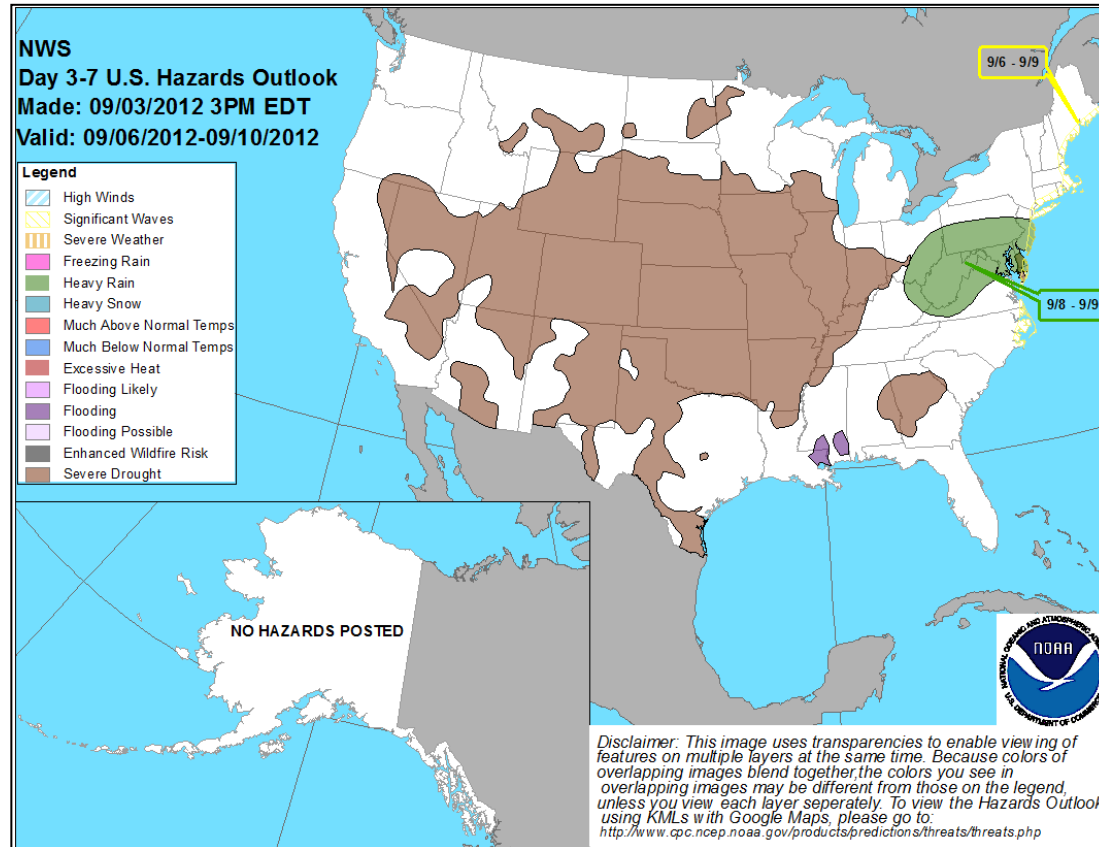
# Critical Fire Weather Areas Days 1-8



FEMA



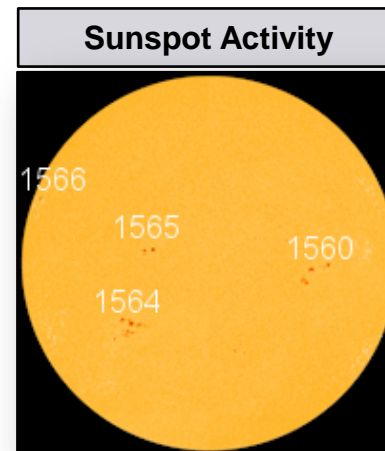
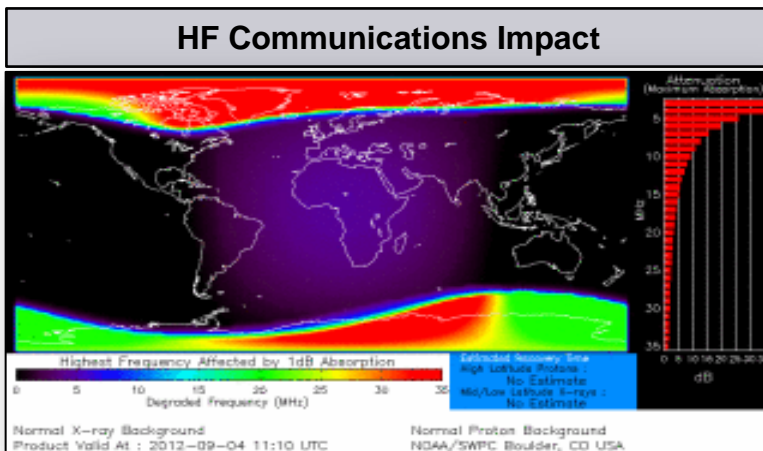
# Hazard Outlook: September 6 - 10





# Space Weather

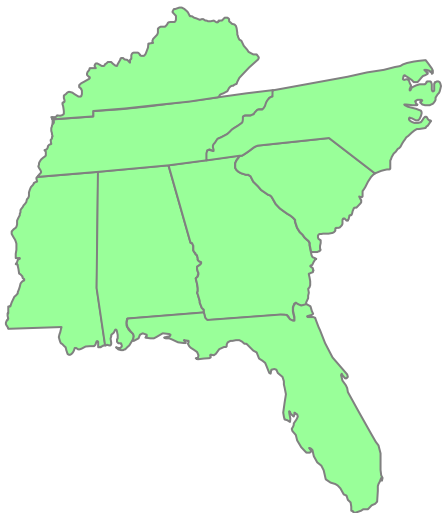
NOAA Scales Activity Range 1 (minor) to 5 (extreme)	Past 24 Hours	Current	Next 24 Hours
Space Weather:	Moderate	None	Minor
Geomagnetic Storms	G2	None	G1
Solar Radiation Storms	S1	None	S1
Radio Blackouts	None	None	None



# Region IV

## Region IV

- RRCC is at Level III (through September 6 in support of DNC)



## State Response

### Florida:

- EOC activated at Level II (Partial Activation 7am-7pm)

### Mississippi:

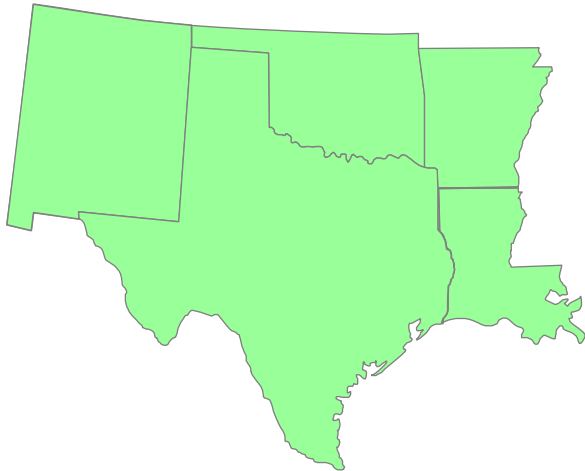
- EOC activated at Level I (8am-5pm)
- ▲ Hwy 43 Spur (Beach St) between Picayune and Hwy 43 is flooded in Pearl River County.
- ▲ Four shelters are open with 79 occupants
- ▲ IA Registrations: 5,045; Total IHP Approved \$939,933
- ▲ Housing Inspections: 3,258 issued; 450 completed
- ▲ Damage: 60,631 homes with moderate/minor damage; 145 homes and 107 mobile homes destroyed
- ▲ Four Insurance Specialists and four HM advisors in MS
- ▲ Six HPA Specialists have been deployed to the Gulfport are in support of PDAs

# Region VI



## Region VI

- RRCC activated at Level II (24/7); transitioning operations to the JFO in Baton Rouge by 9/5



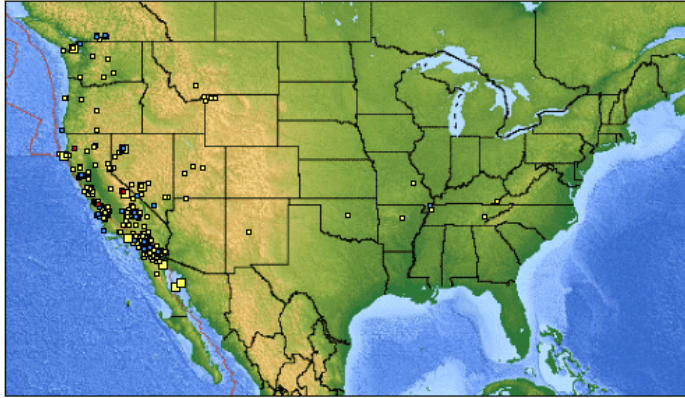
## State Response

### Louisiana

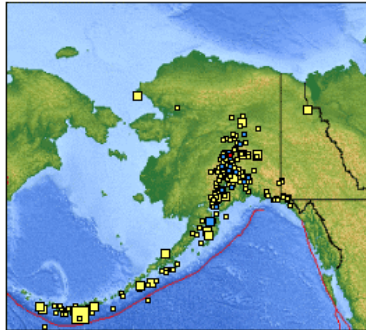
- LA EOC activated at Level I (Full Activation)
- ▲ Public schools across LA are opening on Tuesday, September 4. Schools in the impacted areas are projected to open during the week.
- ▲ A mandatory evacuation order remains for the lower end & east bank of Plaquemines Parish; voluntary evacuation order for Jefferson, St. James & St. John Parishes
- ▲ 24 shelters are open with 2,566 occupants
- ▲ 23 PODs open across LA
- ▲ IA Registrations: 102,869; Total IHP Approved \$15,401,781
- ▲ Housing Inspections: 56,963 issued; 9,428 completed
- ▲ 20 nursing homes & four hospitals (dispersed across six parishes) identified as remaining in critical mode, running on generator power & having been prioritized for primary power restoration.

# Significant Earthquake Activity

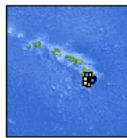
Tue Sep 4 11:17:10 UTC 2012  
1235 earthquakes on these maps



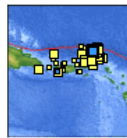
CONTIGUOUS 48 STATES



ALASKA



HAWAII



PUERTO RICO

magnitudes

- ☐ >5
- ☐ >3
- ☐ >1
- ☒ not yet known

- ☒ last hour
- ☐ last day
- ☐ last week

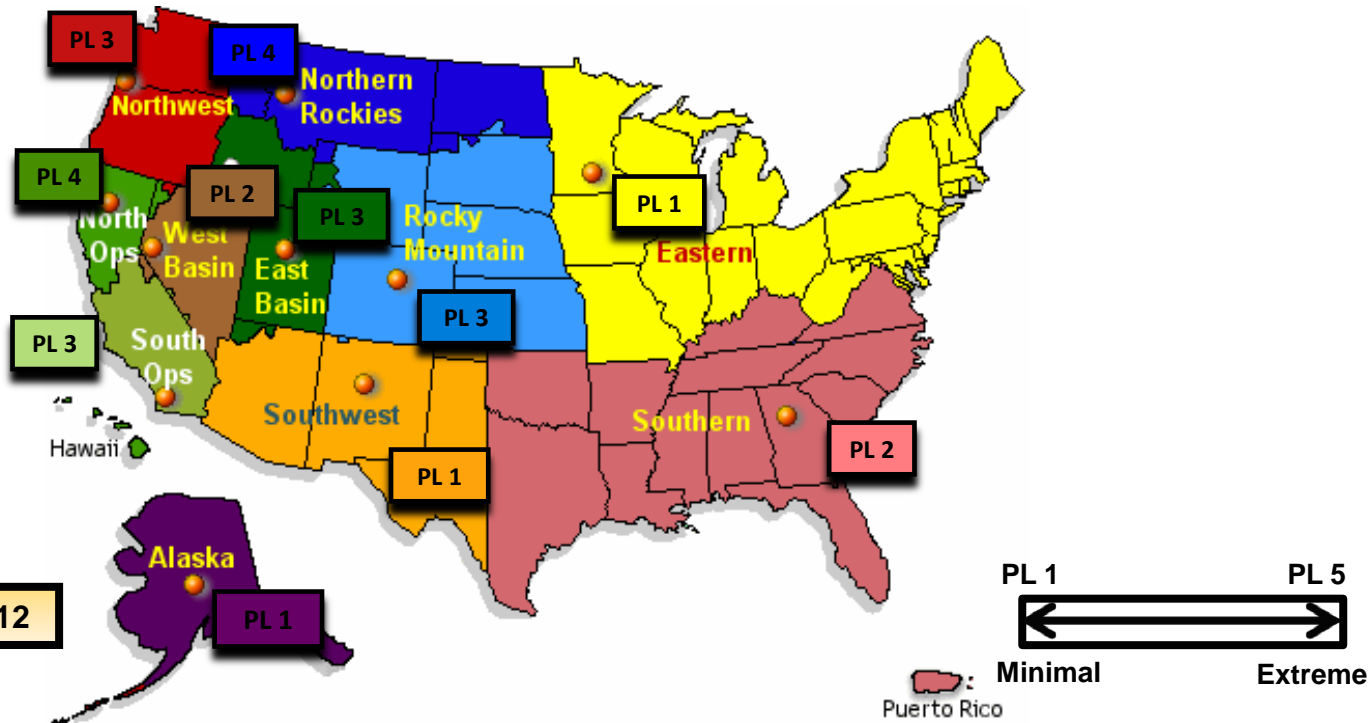
- No significant activity

# US Wildland Fire Preparedness Levels



## National Preparedness Level: 3

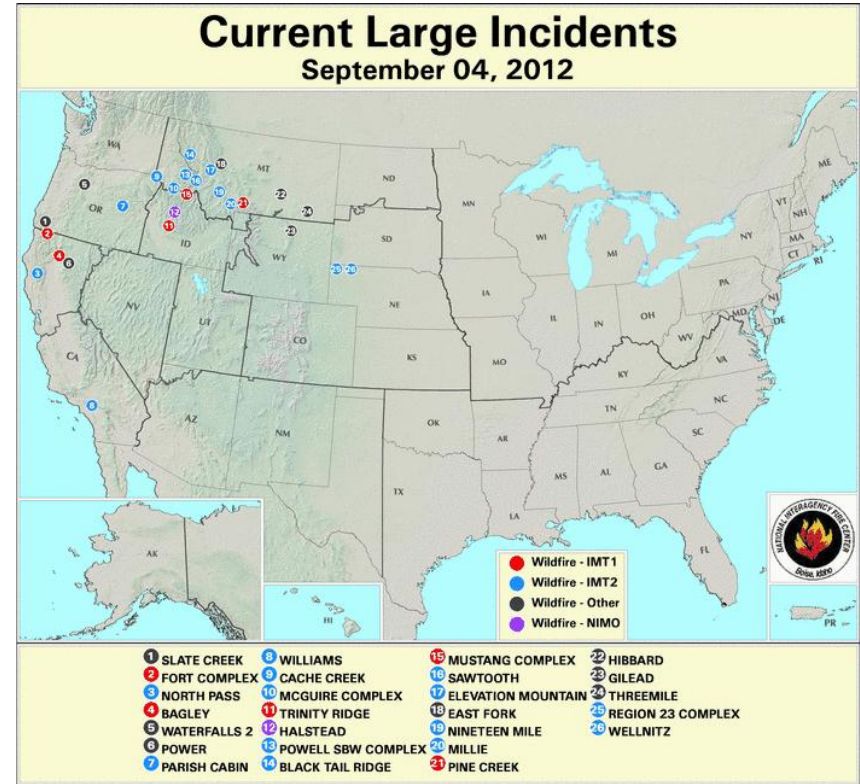
Description: Two (2) or more Geographic Areas are experiencing wildland or prescribed fire activities requiring a major commitment of National Resources. Additional resources are being ordered and mobilized through NICC. Type 1 and 2 Incident Management Teams are committed in two (2) or more Geographic Areas and crew commitment nationally is at 50%.



# National Fire Activity

## September 4, 2012:

- National Preparedness Level: 3
- Initial Attack Activity: Light (123)
- New Large Fires: 1
- Large Fires Contained: 0
- Uncontained Large Fires: 22
- Area Command Teams committed: 1
- NIMOs committed: 1
- Type 1 IMT(s) committed: 7
- Type 2 IMT(s) Committed: 14
- States Affected: MT, ID, WY, CA, OR, NE,



# Western Wildfire Summary



Fire Name (County)	FMAG #	Acres burned	% Contained	Evacuations (Type)	Structures Threatened	Structures Destroyed	Fatalities / Injuries
Idaho (1)							
Halstead Fire (Custer County, ID)	Not Requested	131,030 (+2,200)	7%	Yes (Voluntary)	417	0	0 / 4
South Dakota (1)							
Welcome SD Fire (Shannon County)	August 31	27,000	0%	Yes	175	0	0 / 0
California (1)							
Williams Fire (Los Angeles County)	Not Requested	3,600	5%	Yes	75	1	0/5



# Disaster Requests & Declarations

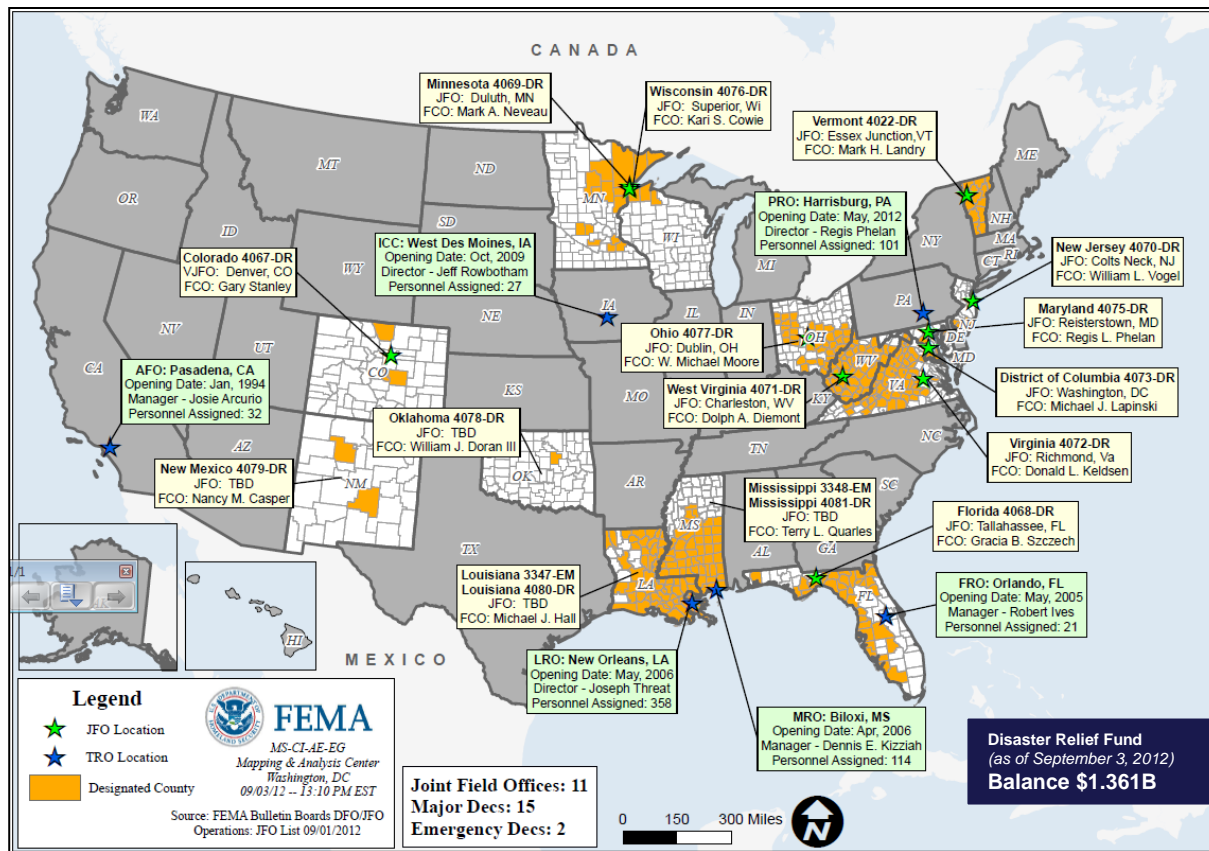


Declaration Requests in Process		Requests APPROVED (since last report)	Requests DENIED (since last report)
1	Date Requested	0	0
NE – DR Wildfires	August 28, 2012		

# Open Field Offices as of September 4, 2012



FEMA



# Joint Preliminary Damage Assessments



				Number of Counties			
Region	State	Event	IA/PA	Requested	Ongoing	Complete	Start – End
IV	FL	Hurricane Isaac August 26, 2012 and continuing	IA	3	1	2	8/31 - TBD
			PA	7	6	1	8/31 - TBD
IV	MS	Hurricane Isaac August 26, 2012 and continuing	IA	9	4	0	9/2 - TBD
			PA	4	0	0	9/2 - TBD
VI	LA	Hurricane Isaac August 26, 2012 and continuing	IA	11	3	5	8/31 - TBD
			PA	14	4	0	8/31 - TBD

# MCOV Fleet / Deployment Status

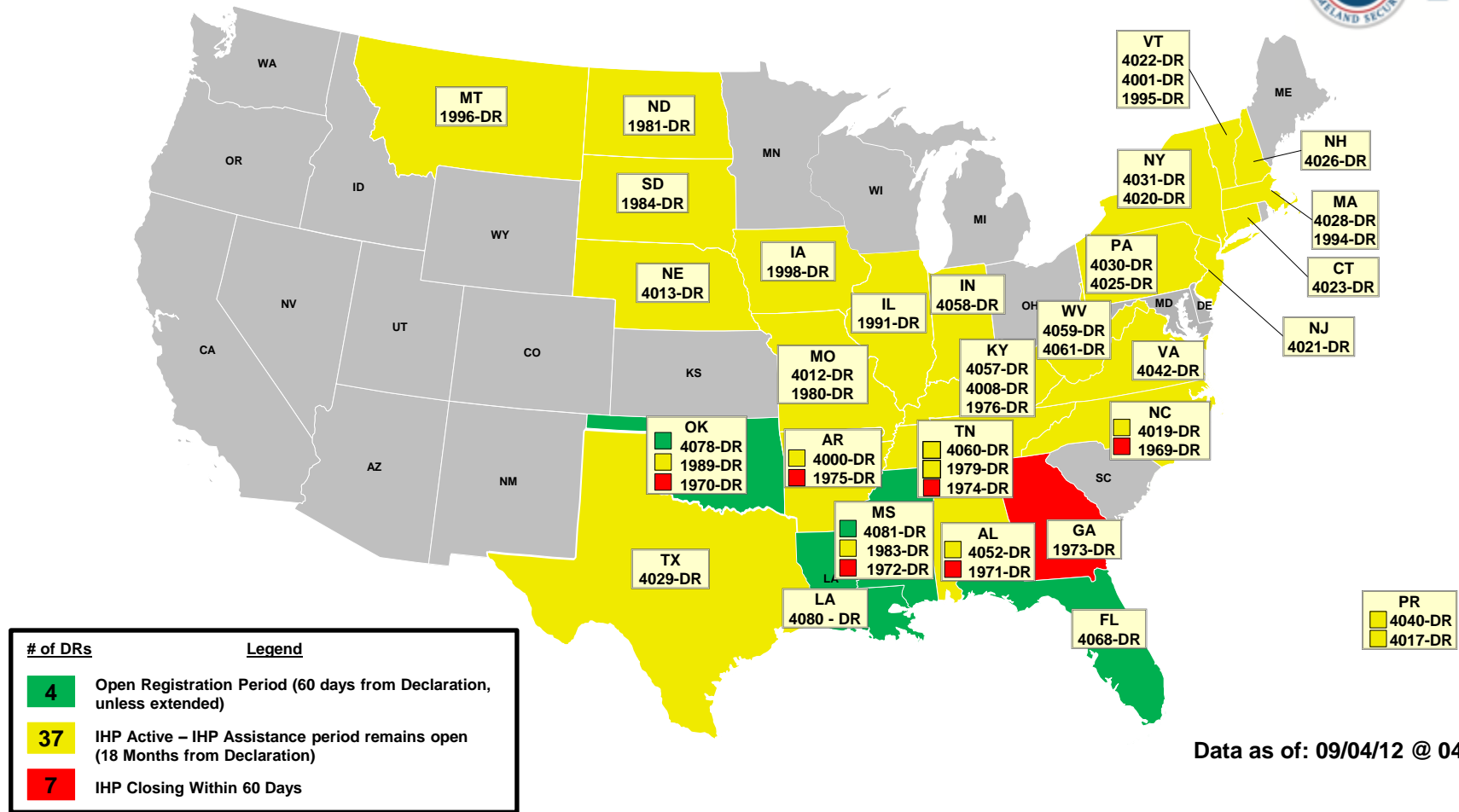


MCOV FLEET STATUS						MCOV DISASTER SUPPORT DEPLOYMENTS					
Location	Units Assigned	Available FMC	Deployed Committed	PMC	NMC	DR-State	OPCON	En Route	Unit Prep	Open Request	Notes:
DC Atlanta	21	3	17		1	DR-4078-OK	1				
DC Cumberland	10	7	3			DR-4080-LA	10	5	1	8	
DC Ft Worth	15	2	10		3	MS-4081-ISB	2				
DC Moffett	6	6				MS-4081-JFO	5				
Holliston, MA	1	1									
Denver, CO	2	0	2								
Bothell, WA	2	2									
<b>TOTAL</b>	<b>57</b>	<b>21</b>	<b>32</b>	<b>0</b>	<b>4</b>	<b>TOTAL</b>	<b>18</b>	<b>5</b>	<b>1</b>	<b>8</b>	
Included in above totals, units en route for turn-in.											

Fully Mission Capable	53
Partially Mission Capable	0
Non-Mission Capable	4
<b>Total Not Deployed</b>	<b>25</b>

Data as of: 09/04/12 @ 0400

# Active IA Disasters



Data as of: 09/04/12 @ 0400

# IA Registration Statistics



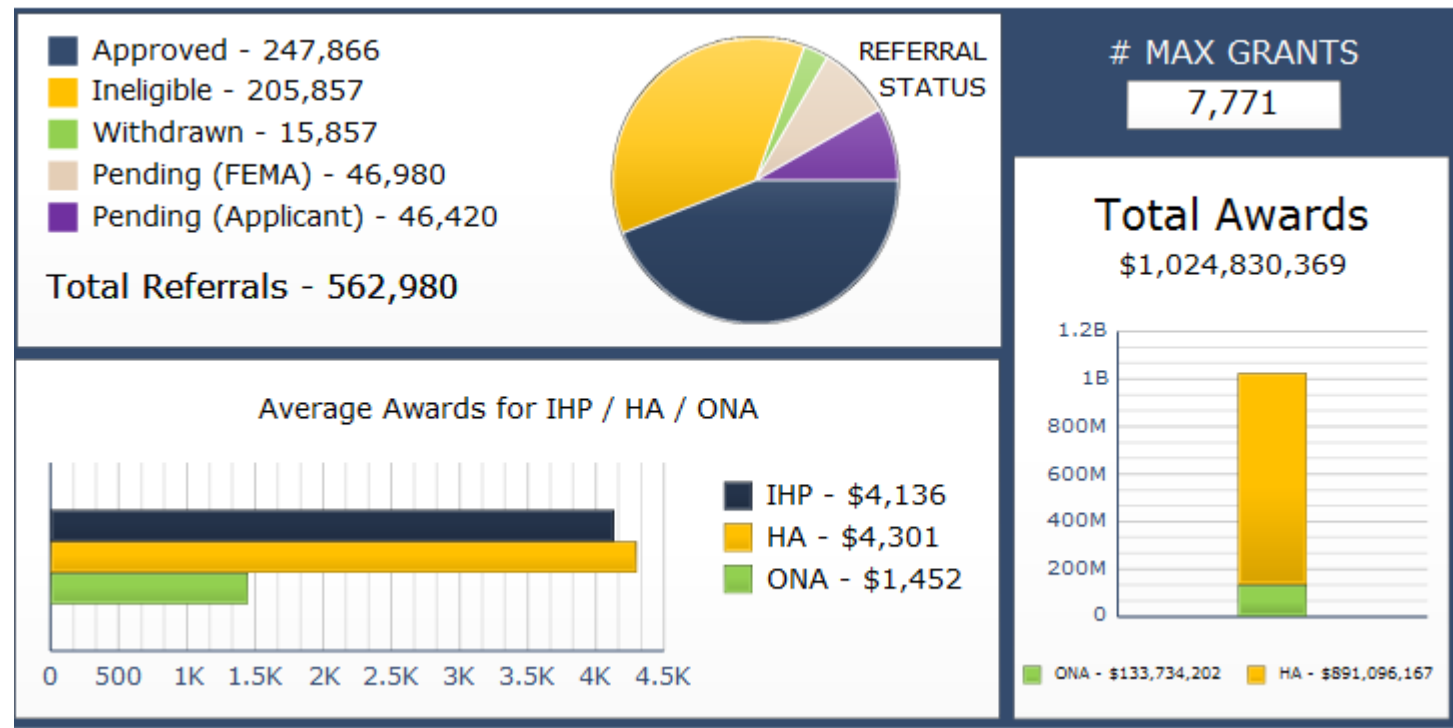
## Cumulative as of September 4, 2012 @ 0130

DR # - State	Registrations	Approved Applicants	Total HA Approved	Total ONA Approved	Total IHP Approved
4068 - FL	16,914	6,175	\$62,039,479	\$7,587,951	\$69,627,430
4078 - OK	586	213	\$8,242,990	\$813,819	\$9,056,809
4080 - LA	102,869	3,057	\$13,242,076	\$2,159,705	\$15,401,781
4081 - MS	5,045	149	\$800,034	\$139,899	\$939,933
<b>Totals</b>	<b>125,414</b>	<b>9,594</b>	<b>\$84,324,579</b>	<b>\$10,701,374</b>	<b>\$95,025,953</b>
<b>24 hour change</b>	<b>+33,864</b>	<b>+2,157</b>	<b>+\$9,385,901</b>	<b>+\$1,724,992</b>	<b>+\$11,110,893</b>

## NPSC Call Data for September 2, 2012

Total NPSC Calls Answered (Helpline + Registration Intake)	22,425
Average time to answer call	5 Minutes 35 Seconds

# IHP Referral Status & Awards



Data includes the 48 IHP Active DRs

# Max Grants = Applicants awarded maximum IHP (\$30,200 as of FY2012)

Data as of: 09/04/12 @ 0400



# Housing Inspection Statistics



Data as of September 4, 2012 @ 0400					
DR # - State	Inspectors	Inspections Assigned	Inspections Completed	Inspection % Complete	Turnaround Time (Days)
4068 - FL	8	13,687	13,401	97.9%	1.8
4078 - OK	1	312	303	97.1%	1.6
4080 - LA	1,116	57,132	9,898	17.3%	1.7
4081 - MS	80	3,267	454	13.9%	1.1
TOTAL	1,125	71,131	23,602	33.2%	1.7
24 hour change	+410	+15,863	+6,594	+2.4%	+0.1

# IMAT Status



National Teams					
Team	Status	Team	Status	Team	Status
BLUE (East)	LA	WHITE (Central)	MS	RED (West)	LA
Regional Teams					
Team	Status	Team	Status	Team	Status
Region I		Region V	OH	Region IX-1	LA
Region II		Region VI-1	LA	Region IX-2	
Region III	VA	Region VI-2	OK	Region X	
Region IV-1	NC (DNC)	Region VII	LA		
Region IV-2	FL	Region VIII			

= Available/Mission Capable

= Assigned/Deployed

= Available/Partially Mission Capable

= Out-of-Service

# Urban Search & Rescue



FEMA

INCIDENT SUPPORT TEAMS (Red-White-Blue) – Monthly On Call Rotation											
JAN	FEB	MAR	APR	MAY	JUN	JUL	AUG	SEP	OCT	NOV	DEC
WEST				CENTRAL				EAST			
Team	Status	Team	Status	Team	Status	Team	Status	Team	Status	Team	Status
CA-TF1	Available	AZ-TF1	Available	FL-TF1	Available	FL-TF1	Available	FL-TF1	Available	FL-TF1	Available
CA-TF2	Available	CO-TF1	Available	FL-TF2	Available	FL-TF2	Available	FL-TF2	Available	FL-TF2	Available
CA-TF3	Available	IN-TF1	Available	MA-TF1	Available	MA-TF1	Available	MA-TF1	Available	MA-TF1	Available
CA-TF4	Available	MO-TF1	Available	MD-TF1	Available	MD-TF1	Available	MD-TF1	Available	MD-TF1	Available
CA-TF5	Available	NE-TF1	Available	NY-TF1	Available	NY-TF1	Available	NY-TF1	Available	NY-TF1	Available
CA-TF6	Available	NM-TF1	Non-operational	PA-TF1	Conditionally Available	PA-TF1	Conditionally Available	PA-TF1	Conditionally Available	PA-TF1	Conditionally Available
CA-TF7	Available	NV-TF1	Conditionally Available	VA-TF1	Available	VA-TF1	Available	VA-TF1	Available	VA-TF1	Available
CA-TF8	Available	TN-TF1	Conditionally Available	VA-TF2	Available	VA-TF2	Available	VA-TF2	Available	VA-TF2	Available
WA-TF1	Available	TX-TF1	Available	OH-TF1	Available	OH-TF1	Available	OH-TF1	Available	OH-TF1	Available
		UT-TF1	Available								



= Available/Mission Capable



= Assigned/Deployed



= Available/Partially Mission Capable



= Out-of-Service

# RRCC / Regional Watch Center Status



Region	RRCC	Regional Watch Center
I	Watch/Steady State	Maynard MOC (24/7)
II	Watch/Steady State	24/7
III	Watch/Steady State	24/7
IV	Level III (Partial Activation)	24/7
V	Watch/Steady State	24/7
VI	Level II (Partial Activation)	Denton MOC (24/7)
VII	Level III (Monitoring 24/7)	24/7
VIII	Watch/Steady State	Denver MOC (24/7)
IX	Watch/Steady State	24/7
X	Watch/Steady State	Bothell MOC (24/7)

# National Team Status



Team/Status	Current Location	Remarks
National Watch Center	Washington, DC	Enhanced Watch (11am-11pm)
NRCC	Washington, DC	Level II (24/7)
HLT	Miami, FL	Activated
DEST	Washington, DC	Not Activated
Mission Capable	Partially Mission Capable	Not Mission Capable



# FEMA

**FEMA's mission is to support our citizens and first responders to ensure that as a nation we work together to build, sustain, and improve our capability to prepare for, protect against, respond to, recover from, and mitigate all hazards.**