



# **FEMA**

## **Daily Operations Briefing**

**August 25, 2012**

**As of 8:30 a.m. EDT**



# Significant Activity: August 24-25

**Significant Events:** Tropical Storm Isaac

## **Tropical Activity:**

- Atlantic: Tropical Storm Isaac; Area 1 - LOW (10%); Area 2 (Invest 97L) - MEDIUM (30%)
- Eastern Pacific – Area 1 - LOW (20%)
- Central Pacific – No tropical cyclones expected through Sunday evening
- Western Pacific – Typhoon 16W (Bolaven)

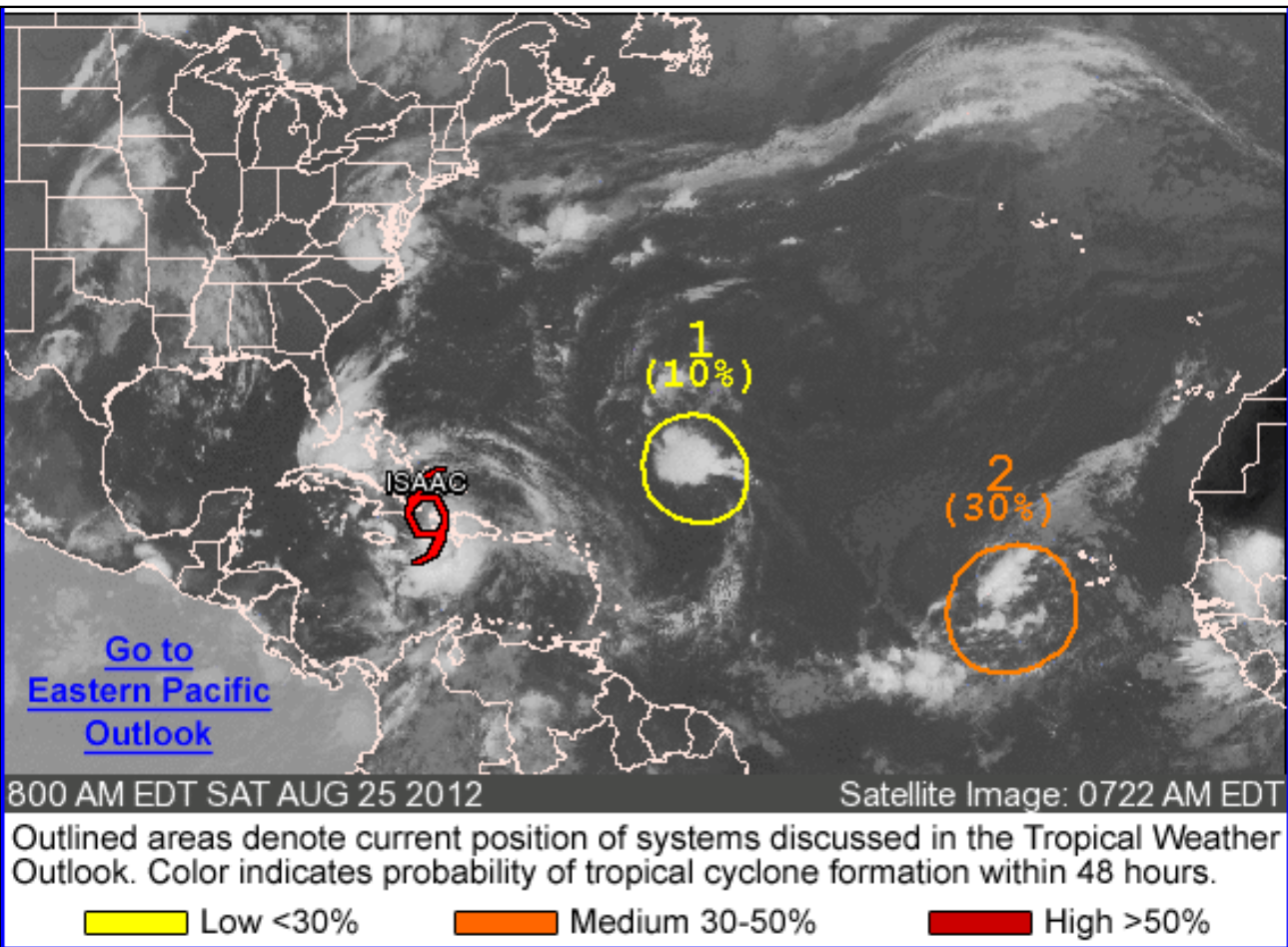
## **Significant Weather:**

- Moderate to heavy rains – Central US, Mid-Atlantic & Carolinas
- Tropical Storm Isaac impacting south Florida
- Critical Fire Weather Areas: None; Red Flag Warnings: WY, ND & portions of MT
- Space Weather: No space weather storms occurred/predicted

**Earthquake Activity:** No significant activity

**Disaster Declaration Activity:** FEMA-4079-DR for New Mexico

# Atlantic – Tropical Outlook



[Go to Eastern Pacific Outlook](#)

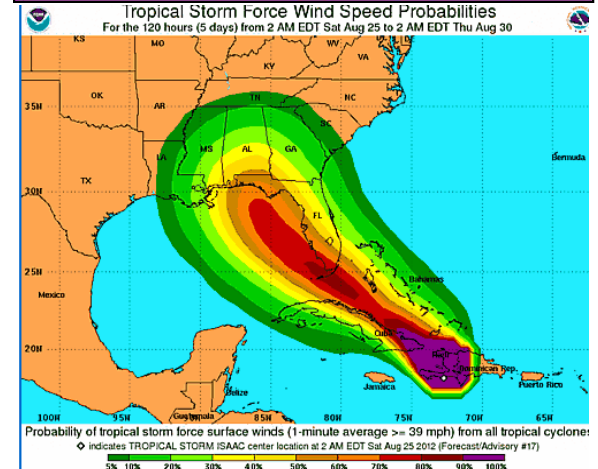


FEMA

# Atlantic – Tropical Storm Isaac

As of 8:00 a.m. EDT

- 95 miles SE of Guantanamo Bay, Cuba
- Moving NW at 14 mph
- A WNW to NW motion is forecast to continue over the next 48 hours
- The center should move near or over eastern Cuba today & approach Florida Keys on Sunday
- Max sustained winds 60 mph, with higher gusts
- Some strengthening forecast after Isaac moves over eastern Cuba today; expected to become a Hurricane Sunday
- Tropical Storm force winds extend 230 miles from center
- Hurricane Watches and Warnings in effect for Florida Keys, Florida Bay and Western/Eastern Coastal Florida; and Haiti and Cuba



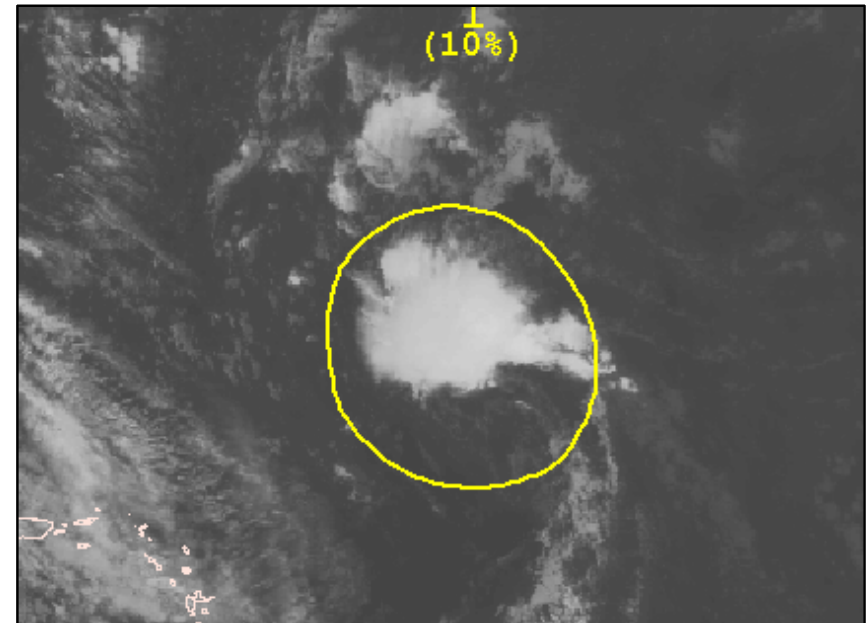


FEMA

# Atlantic – Area 1

As of 5:00 a.m. EDT

- An elongated area of low pressure, the remnants of Tropical Depression Joyce
- Located about 750 miles east-northeast of the northern Leeward Islands
- Upper-level winds do not appear favorable for the system to regenerate into a tropical cyclone during the next couple of days
- This system has a low chance, 10 percent, of becoming a tropical cyclone again during the next 48 hours
- It moves west-northwestward to northwestward at about 20 mph.



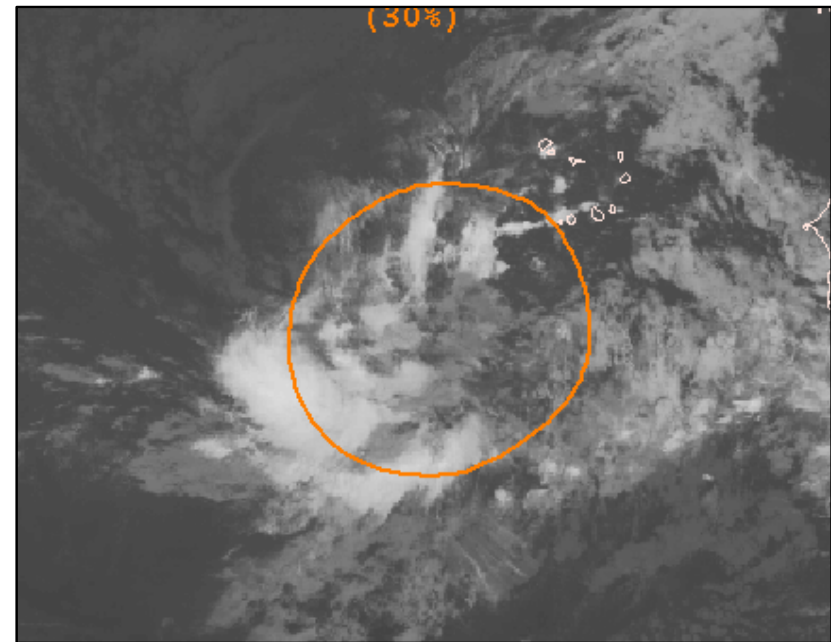


FEMA

# Atlantic – Area 2 (Invest 97L)

As of 5:00 a.m. EDT

- A broad area of low pressure located about 350 miles west-southwest of the Cape Verde Islands
- Continues to produce disorganized showers and thunderstorms
- Environmental conditions are marginally conducive for development as the system moves toward the west-northwest at 10 to 15 mph
- This system has a medium chance, 30 percent, of becoming a tropical cyclone during the next 48 hours

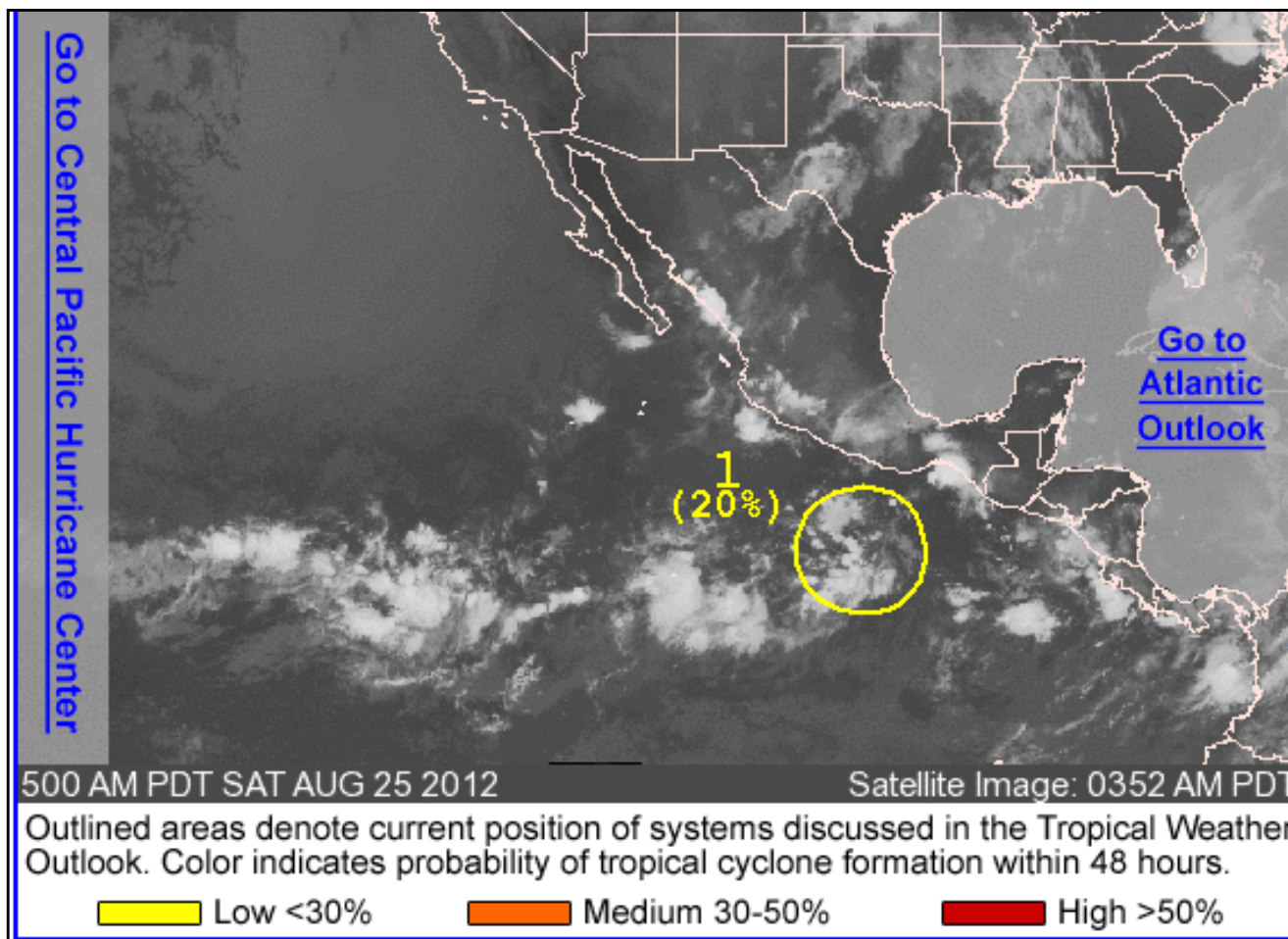




# Eastern Pacific – Tropical Outlook



FEMA



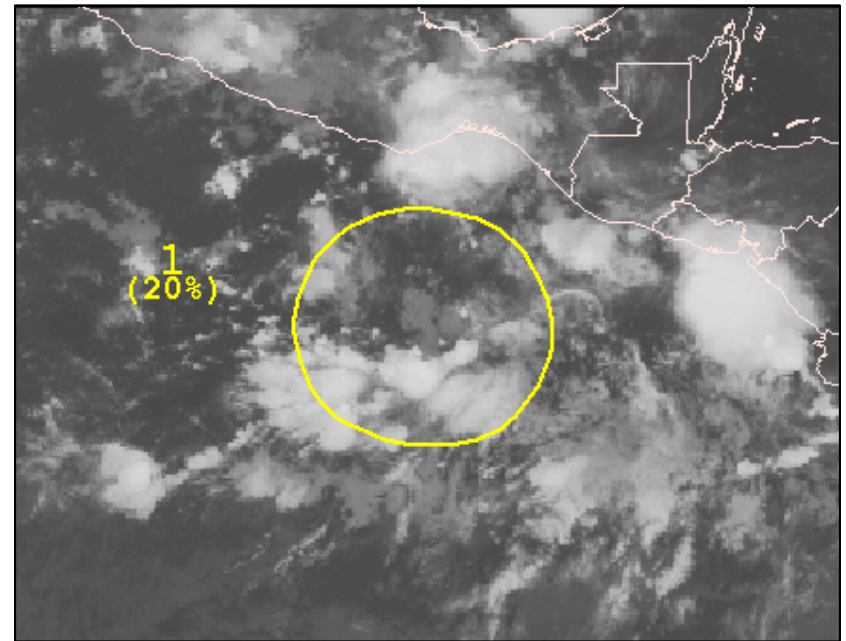


FEMA

# Eastern Pacific – Area 1

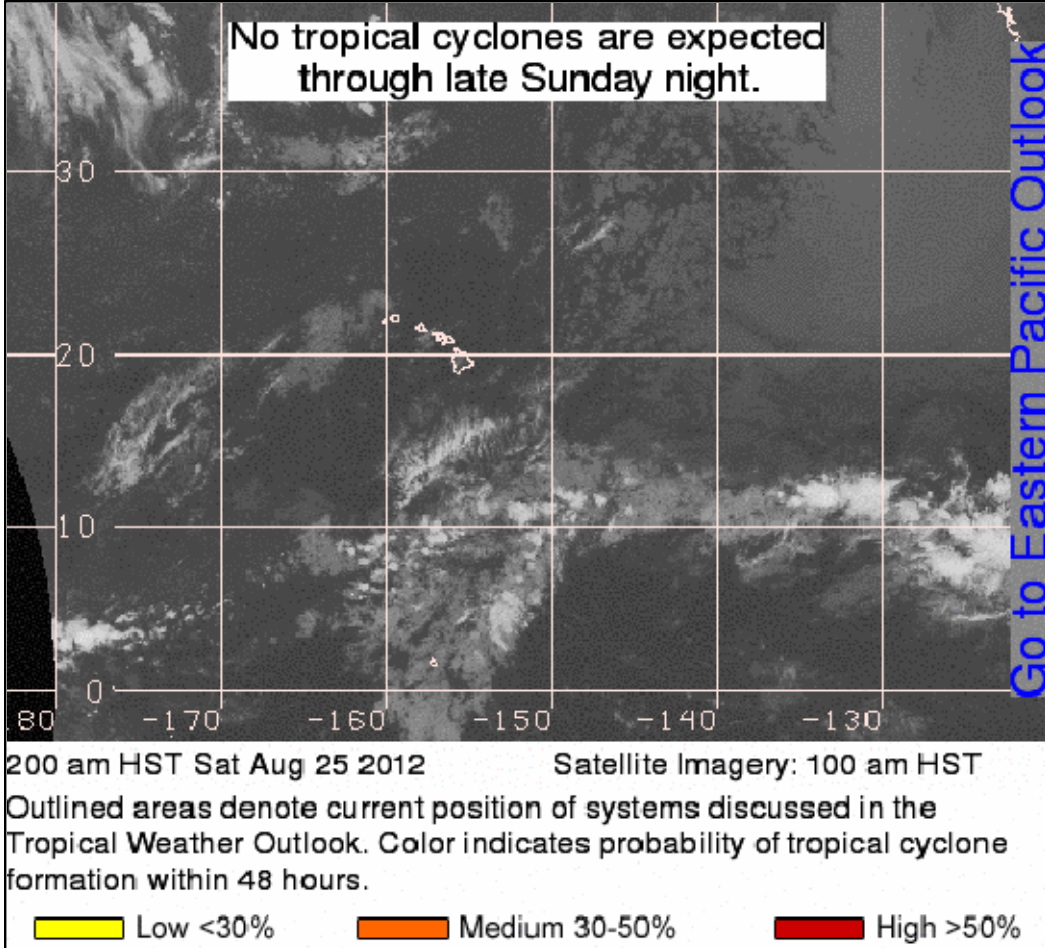
As of 5:00 a.m. EDT

- Showers and thunderstorms associated with a broad area of low pressure approximately 400 miles SSW of the Gulf of Tehautepec
- Little change in organization
- Environmental conditions could become more conducive for development during the next couple of days
- LOW (20%) chance of becoming a tropical cyclone during the next 48 hours
- Moving westward at 10 mph





# Central Pacific – Tropical Outlook

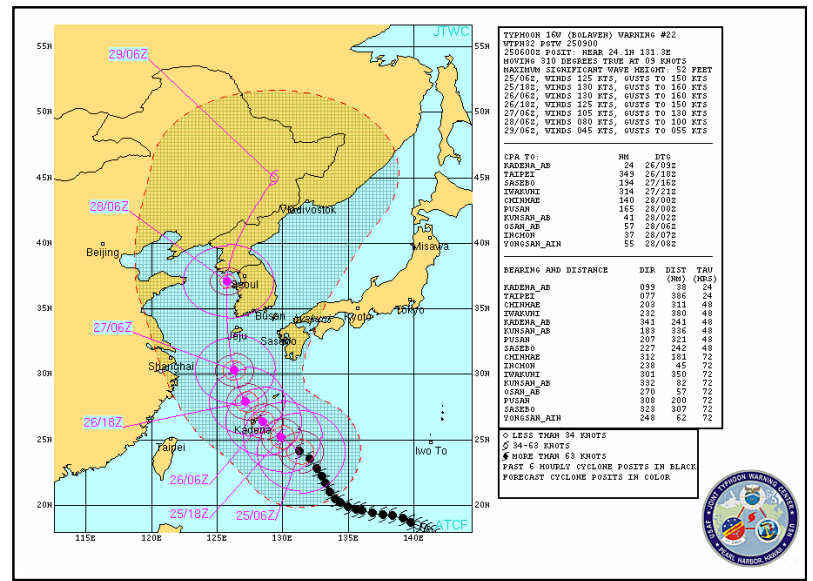


# Western Pacific – Typhoon 16W (Bolaven)



## As of 8:00 a.m. EDT

- 270 miles SE of Kadena Air Base, Okinawa, Japan
- Moving NW at 11 mph
- Max sustained winds 145 mph
- Forecast to pass within 24 miles of Kadena on August 26



# Tropical Storm Isaac - Response



## Region II

- ▲ RRCC de-activated as of 7:00 p.m. EDT, August 23; ESFs and DCE released August 24
- ▲ Region II IMAT 2 demobilized
- ▲ Two LNOs remained deployed to Puerto Rico
- ▲ Maynard MERS personnel supporting Region II deactivated August 24

## Puerto Rico

- ▲ PREMA remains at partial activation
  - Governor declared State of Emergency August 21
- ▲ Two shelters open with 15 (-6) occupants

## U.S. Virgin Islands

- VITEMA returned to normal operations August 24
- ▲ All Shelters are closed

# Tropical Storm Isaac - Response



## Region IV

- ▲ RRCC activated to Level III (Incident Monitoring, 7:00 am – 7:00 pm EDT)
- ▲ LNO deployed to FL EOC; an LNO and IMAT will deploy to Alabama on Sunday, August 26
- ▲ ISB is operational at Naval Air Station Jacksonville
- ▲ FL EOC activated to Level II, Partial Activation on August 23
- ▲ AL EOC not activated; anticipates activation on Sunday
- ▲ MS EOC not activated; anticipates activation next week

## FEMA Region VI

- ▲ RRCC is at Watch/Steady State; transitions to Level III (Partial Activation) 9:00 a.m. EDT today
- ▲ Region VI IMAT-1 deploying to Louisiana EOC today, ETA 9:00 EDT Sunday
- ▲ LA GOHSEP remains at Level III and is monitoring the development of the storm
- ▲ Region VI establishing
  - ▲ ISB at Maxwell Air Force Base
  - ▲ RSA at Camp Beauregard, LA
  - ▲ IOF at Sherwood Forest in Baton Rouge, LA

# Tropical Storm Isaac - Response



## FEMA HQ

- The NRCC is at Watch/Steady State; NRCS and ESFs are on alert
- NWC remains at Enhanced Watch (24/7), with Logistics, Recovery, External Affairs, Threat Monitoring Team, Information/Collection Unit Leader and Knowledge Group Supervisor
- National IMAT White returning to home station from P.R. today August 25
- Three MCOVs deploying to Jacksonville, FL today, August 25





# FIRP-Hurricane Execution

## FEMA Headquarters Actions

### Previous Operational Periods (23-24 August)

- Conduct national-level hurricane VTC at 1230 EDT 23 August
- Coordination calls completed with National Evacuation Support Contract vendors (ambulance, air, motor coach)
- Enhanced NWC expanded to 24 hour shift (0800-2000-0800)

### Current Operational Period (24-25 August)

- Continuing through the FIRP – Hurricane Execution Checklist, Annex X
- Yellow (formerly A) Team to report to the NRCC between 0800 and 1600 for Admin taskings, then released -- on-alert throughout weekend
- Continue national-level hurricane VTC at 1230 EDT 24 August

# Future Planning: August 27 - onward



**Significant Events:** Atlantic / Caribbean Tropical Activity, NSSE's (RNC/DNC), Wildfires

## **Atlantic / Caribbean Tropical Activity:**

- TS Isaac:
  - Forecasted track places southern Florida within Hurricane and Tropical Storm Warnings

## **NSSE's:**

- RNC (Aug 26-30)
  - Will not likely meet criteria to call-off event
- DNC (Sep 3-6)
  - No specific risk/threat

## **Wildfires:**

- No significant shortfalls anticipated

**Territory LSA**

- Crown Bay Container Point, St Thomas

**POD Locations**

Identified

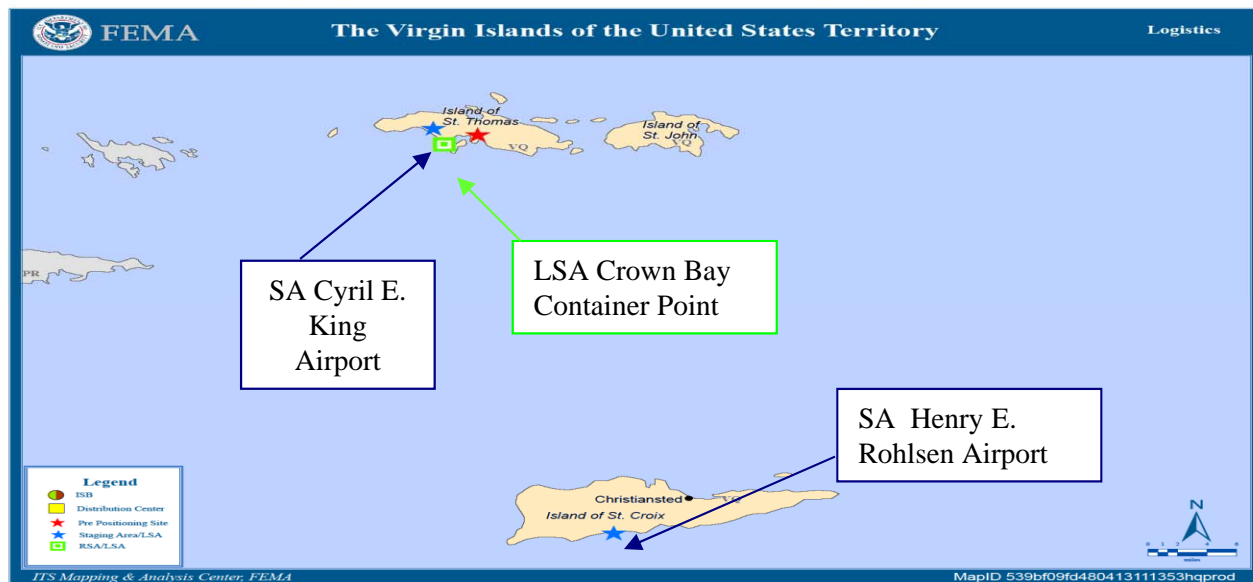
**Federally Recognized Tribes**

0



**Region II – U. S. Virgin Islands**

Based on Annex D to Federal Interagency Response Plan (FIRP)-Hurricane  
As of 8/2012



**FEMA**

**FEMA FSA**

- Cyril E. King Airport
- Henry E. Rohlson Airport

**Distribution Center Source**

- DC Caribbean

**Concept of Resource Support**

- 7-20' PPDS Containers
- DC Caribbean
- Deep Sea Vessel Contract
- Meals Water
- St Thomas 41,472 54K ltrs
- St John 6,912 10.8K ltrs
- St Croix 41,472 54K ltrs

**Commonly Used Shelter Items/Services Listing**

- 3 Infant & Toddler Kits
- 3 CMS Kit
- 3 DME Kit
- Common shelter items
- Shelter services
  - Dependent upon shelter operations

**Power Generation**

- 33 Assessments: Completed by USACE and loaded in ENGLink

**Next 24-72 Hours**

- Region II Log coordination call @ 1000 daily
- Load out of resources from DC Caribbean
- Arrival of resources at St Thomas and St Croix; containers to be held at Port
- Develop sustainment/resupply plan

**Commonwealth LSA**

- Toa Baja
- Vega Baja
- Utuado
- Aguadilla
- Mayaguez
- Sabana Grande
- Penuelas
- Cayey
- Guayarra
- Juncos
- Hurnacao
- Carolina
- Arecibo

**POD Locations**  
Partially Identified

**Federally Recognized Tribes**

0



**Region II – U. S. Virgin Islands**

Based on Annex D to Federal Interagency Response Plan (FIRP)-Hurricane  
As of 8/2012

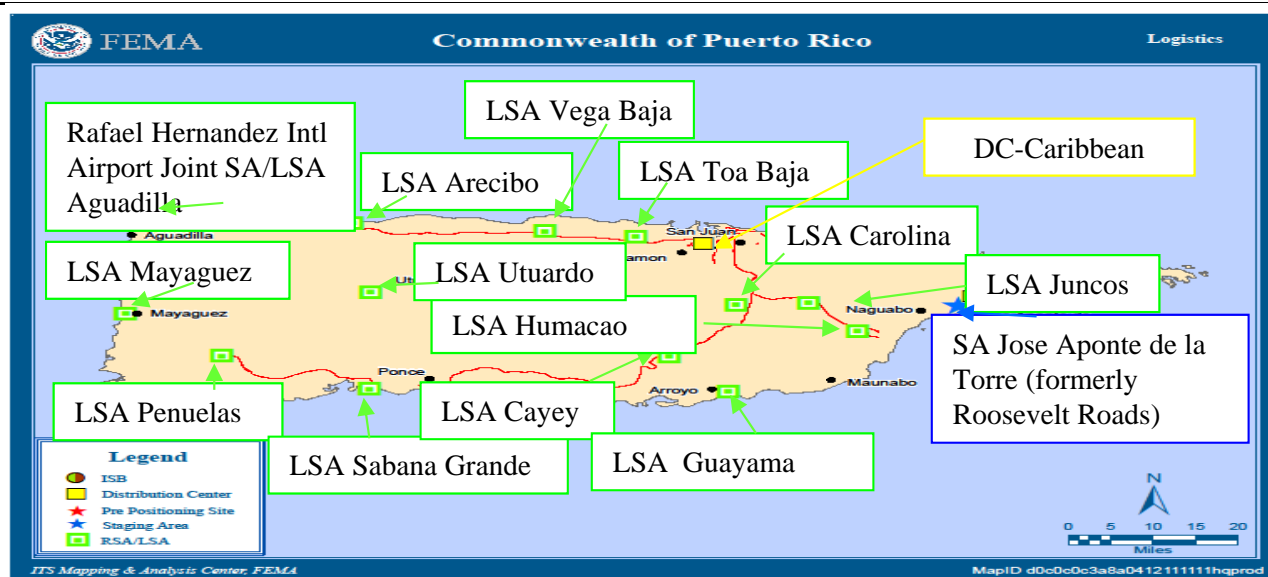


**FEMA FSA**

- Jose Aponte de la Torre Airport-Ceiba (formerly Roosevelt Roads NAS)
- Rafael Hernandez Intl Airport - Aguadilla

**Distribution Center Source**

- DC Caribbean



**Concept of Resource Support**

- DC Caribbean (remaining DC inventory after USVI pre-positioning contract)
  - 92, 524 liters Water
  - 271, 116 Meals
  - 1,520 Blankets
- CONUS to OCONUS Resupply

**Commonly Used Shelter Items/Services Listing**

- 10 Infant & Toddler Kits
- 1 CMS Kit
- 1 DME Kit
- Common shelter items
- Shelter services
  - Dependent upon shelter operations

**Power Generation**

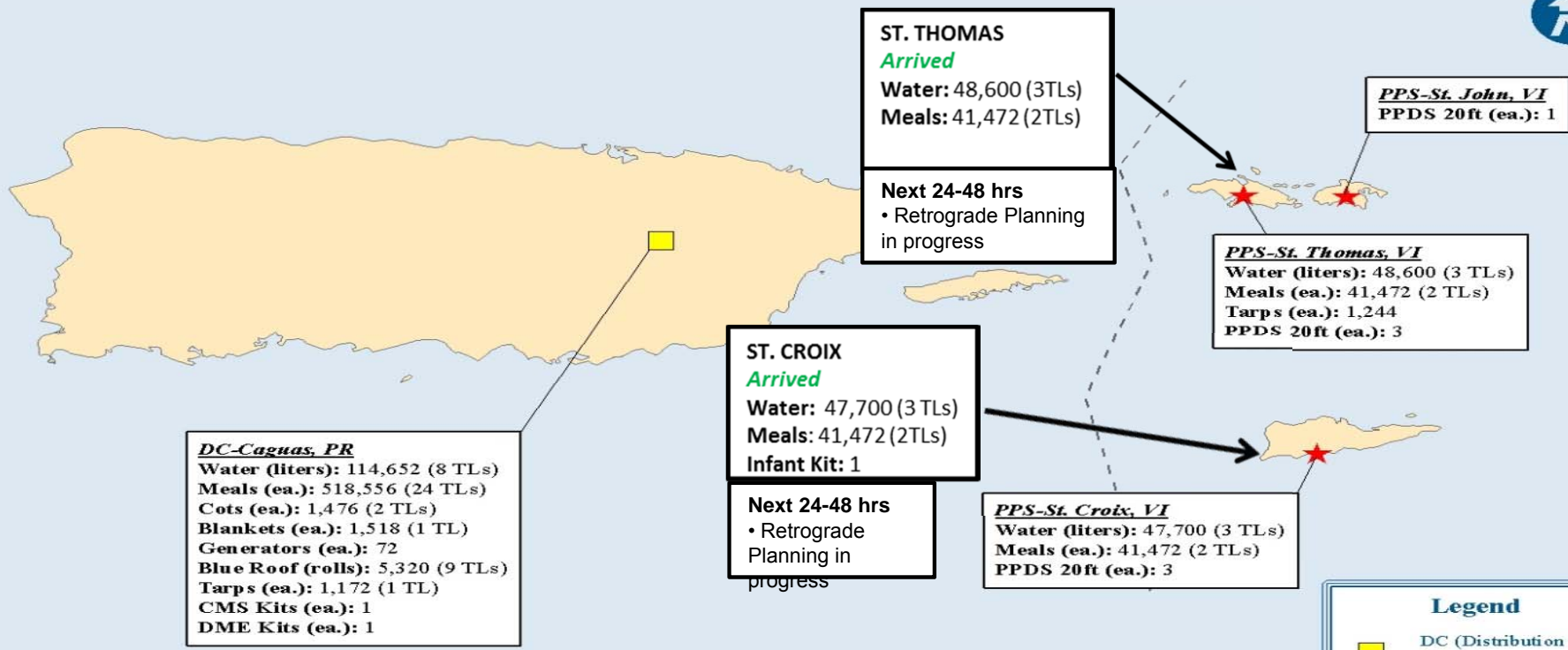
- 331 Assessments: Completed by USACE and loaded in ENGLink

**Next 24-72 Hours**

- Reg II Log coordination call @ 1000 daily
- Develop sustainment / resupply plan



# FEMA Logistics OCONUS PR/VI Commodities as reported 08/23/2012 - 15:00 EST



**Legend**

- DC (Distribution Center)
- PPS (Pre-Positioning Site)

TL = Commodity by 53 ft trailer loads.

Source: DMD - Supply Chain Integration Branch  
08/23/12 - 18:21 PM EST



**State LSA**

- Homestead AFB
- Florida State Warehouse, Orlando
- Camp Blanding
- Lakeland Linder Regional Airport

**POD Locations**

Identified

**Federally Recognized Tribes**

2



**Region IV – Florida**

(Based on Annex D, Federal Interagency Response Plan-Hurricane)  
As of 8/2012



**FEMA SA/ISB**

- MCLB Albany, GA
- NAS Jacksonville
- NAS Pensacola
- Homestead AFB

**Distribution Center Source**

- DC Atlanta (primary)
- DC Frederick
- DC Ft Worth

**Concept of Resource Support**

Beginning 24 Aug: Delivered to ISB NAS Jacksonville, FL – IRR (*Initial Response Resource*) Package Alpha

- 1.05M Meals    1ea CMS/DME
- 400K Water    3 MCOV
- 2.1K Cots    Generators
- 4.5K Blankets
- 20 Infant Toddler Kits

**Commonly Used Shelter Items/Services Listing**

- 10 Infant & Toddler Kits
- 1 CMS Kit
- 1 DME Kit
- Common shelter items
- Shelter services
  - Dependent upon shelter operations

**Power Generation**

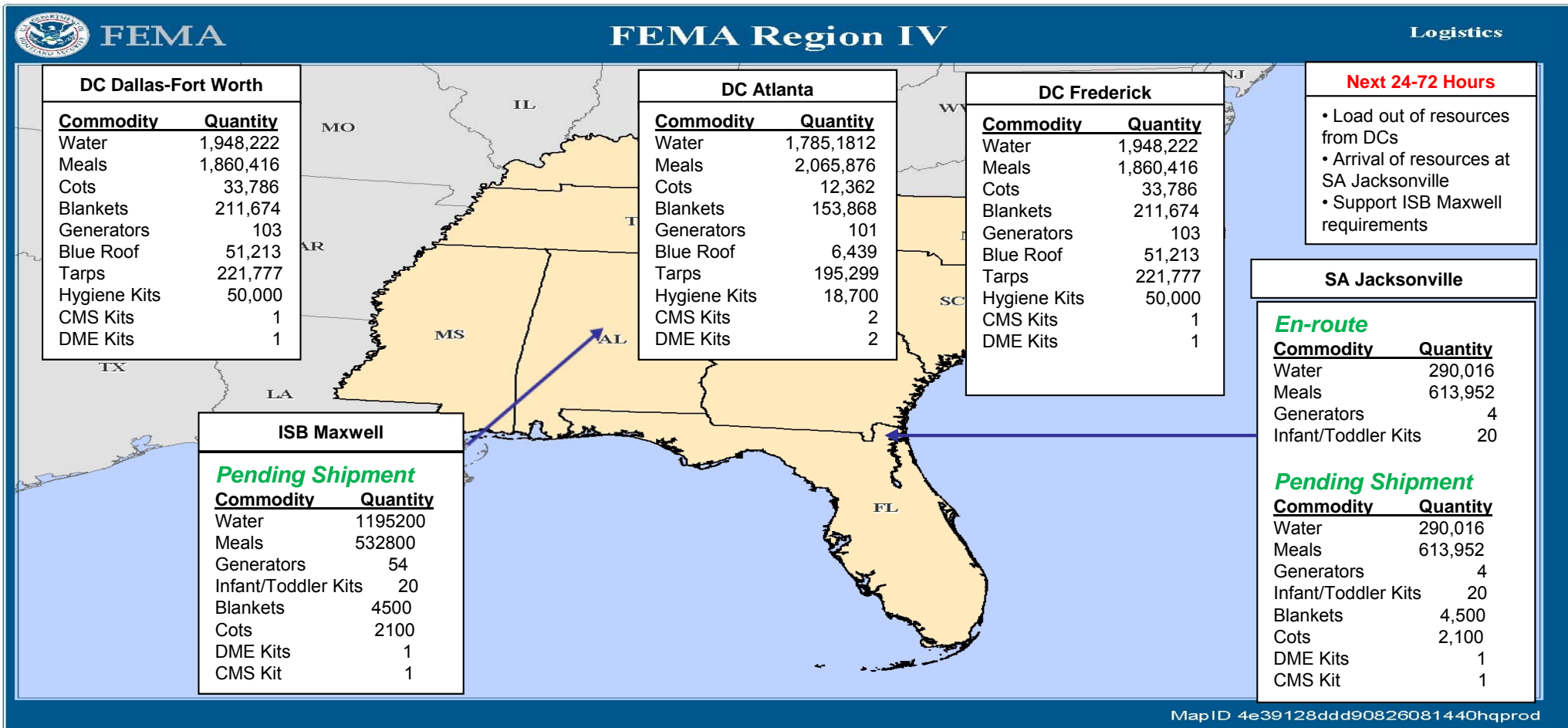
- Florida has conducted power assessments with local vendors
- No USACE assessments on file

**Next 24-72 Hours**

- R-IV Ops/Log coordination call @ 1000 daily
- Load out of resources from DCs
- Arrival of resources at ISB NAS Jacksonville Aug 24-26; RDD is Aug 26
- Develop sustainment/resupply plan

# FEMA Region IV Sustainment

as of 8/24/2012 1650 EST



*Plan*

*Manage*

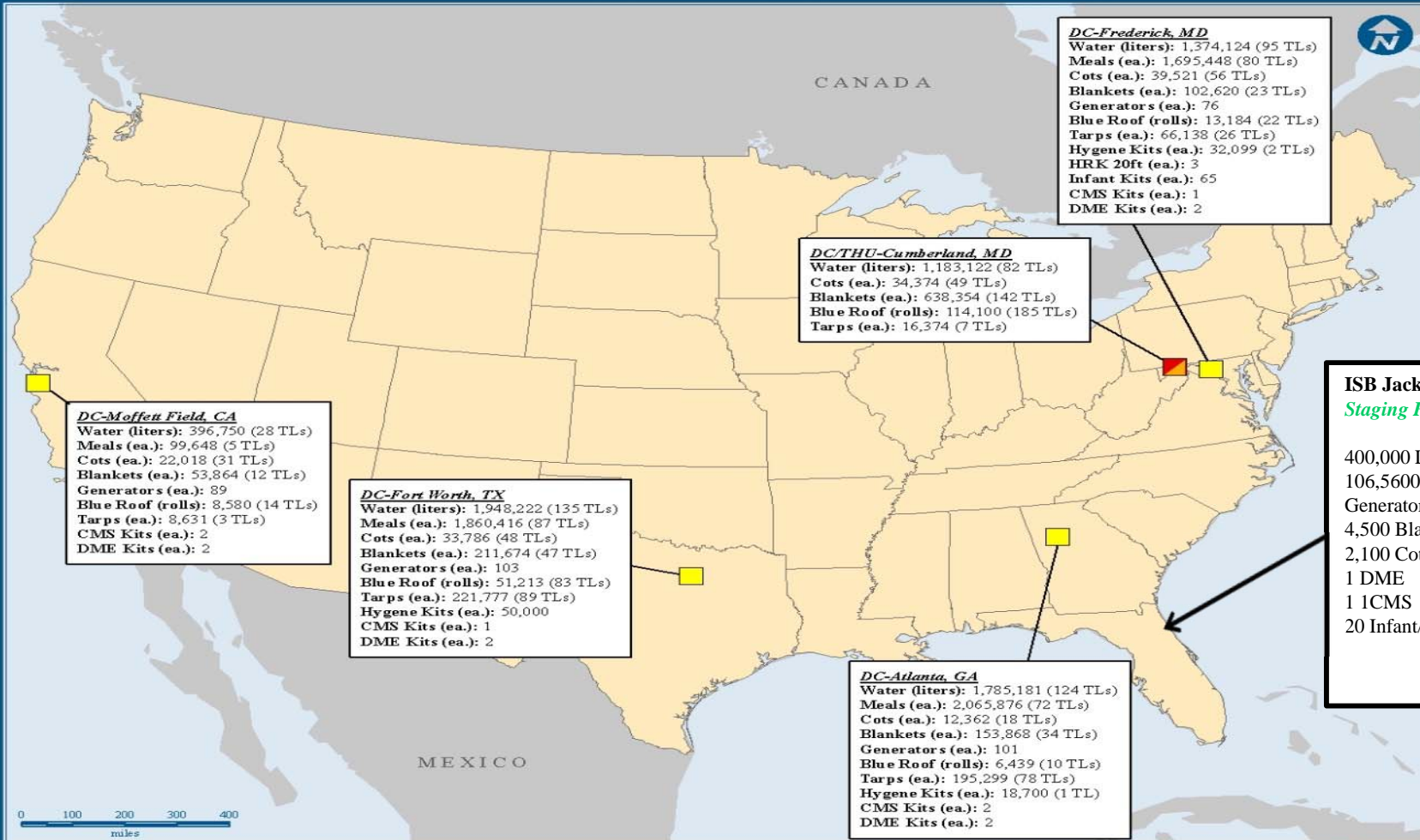
*Sustain*



FEMA

# FEMA Logistics CONUS DC Commodities As Reported 08/23/2012 15:00 EST

Logistics



**DC-Frederick, MD**  
 Water (liters): 1,374,124 (95 TLs)  
 Meals (ea.): 1,695,448 (80 TLs)  
 Cots (ea.): 39,521 (56 TLs)  
 Blankets (ea.): 102,620 (23 TLs)  
 Generators (ea.): 76  
 Blue Roof (rolls): 13,184 (22 TLs)  
 Tarps (ea.): 66,138 (26 TLs)  
 Hygiene Kits (ea.): 32,099 (2 TLs)  
 HRK 20ft (ea.): 3  
 Infant Kits (ea.): 65  
 CMS Kits (ea.): 1  
 DME Kits (ea.): 2

**DC/THU-Cumberland, MD**  
 Water (liters): 1,183,122 (82 TLs)  
 Cots (ea.): 34,374 (49 TLs)  
 Blankets (ea.): 638,354 (142 TLs)  
 Blue Roof (rolls): 114,100 (185 TLs)  
 Tarps (ea.): 16,374 (7 TLs)

**DC-Moffett Field, CA**  
 Water (liters): 396,750 (28 TLs)  
 Meals (ea.): 99,648 (5 TLs)  
 Cots (ea.): 22,018 (31 TLs)  
 Blankets (ea.): 53,864 (12 TLs)  
 Generators (ea.): 89  
 Blue Roof (rolls): 8,580 (14 TLs)  
 Tarps (ea.): 8,631 (3 TLs)  
 CMS Kits (ea.): 2  
 DME Kits (ea.): 2

**DC-Fort Worth, TX**  
 Water (liters): 1,948,222 (135 TLs)  
 Meals (ea.): 1,860,416 (87 TLs)  
 Cots (ea.): 33,786 (48 TLs)  
 Blankets (ea.): 211,674 (47 TLs)  
 Generators (ea.): 103  
 Blue Roof (rolls): 51,213 (83 TLs)  
 Tarps (ea.): 221,777 (89 TLs)  
 Hygiene Kits (ea.): 50,000  
 CMS Kits (ea.): 1  
 DME Kits (ea.): 2

**DC-Atlanta, GA**  
 Water (liters): 1,785,181 (124 TLs)  
 Meals (ea.): 2,065,876 (72 TLs)  
 Cots (ea.): 12,362 (18 TLs)  
 Blankets (ea.): 153,868 (34 TLs)  
 Generators (ea.): 101  
 Blue Roof (rolls): 6,439 (10 TLs)  
 Tarps (ea.): 195,299 (78 TLs)  
 Hygiene Kits (ea.): 18,700 (1 TL)  
 CMS Kits (ea.): 2  
 DME Kits (ea.): 2

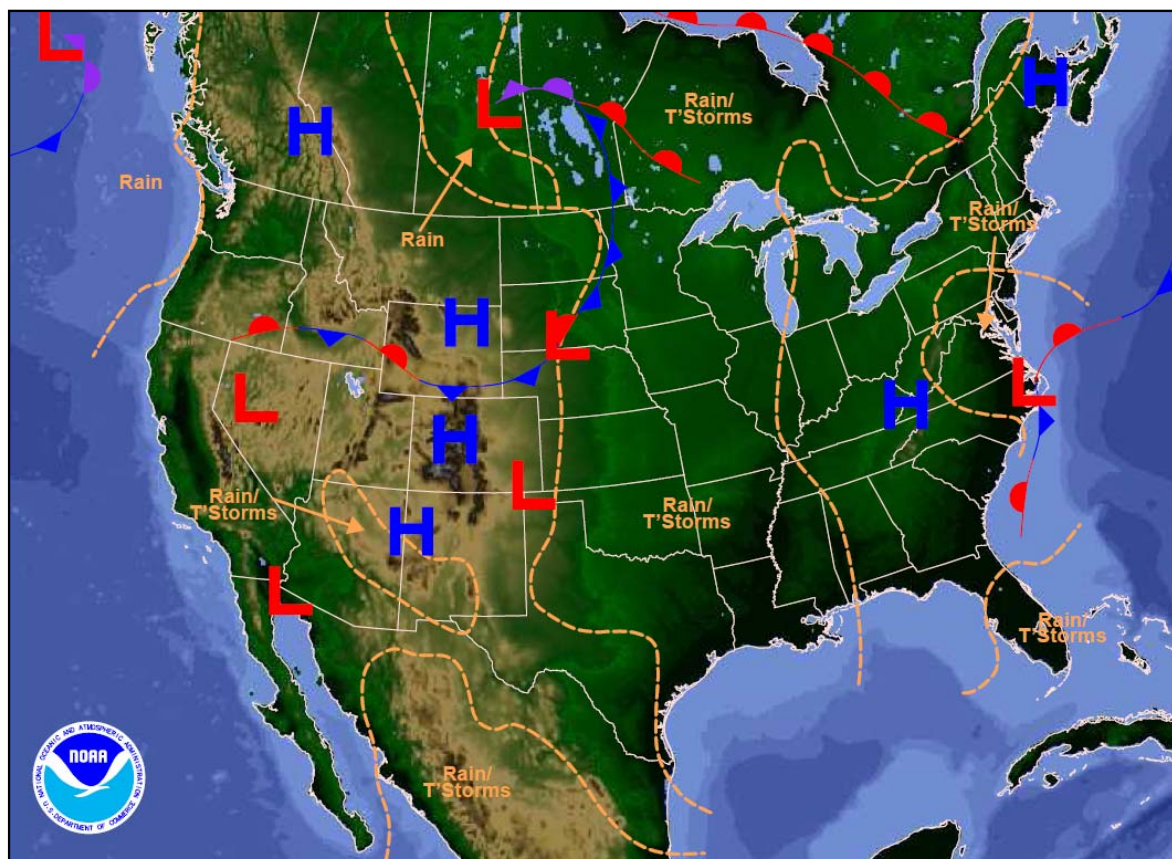
**Legend**  
 DC (Distribution Center)  
 Joint DC/THU (Temp. Housing Unit)

**ISB Jacksonville**  
*Staging Preparations at DCs*  
 400,000 L Water  
 106,5600 Meals  
 Generators  
 4,500 Blankets  
 2,100 Cots  
 1 DME  
 1 1CMS  
 20 Infant/Toddler Kits

TL = Commodity by 53 ft trailer loads.  
 Source: DMD - Supply Chain Integration Branch

08/23/12 -- 18:14 PM EST

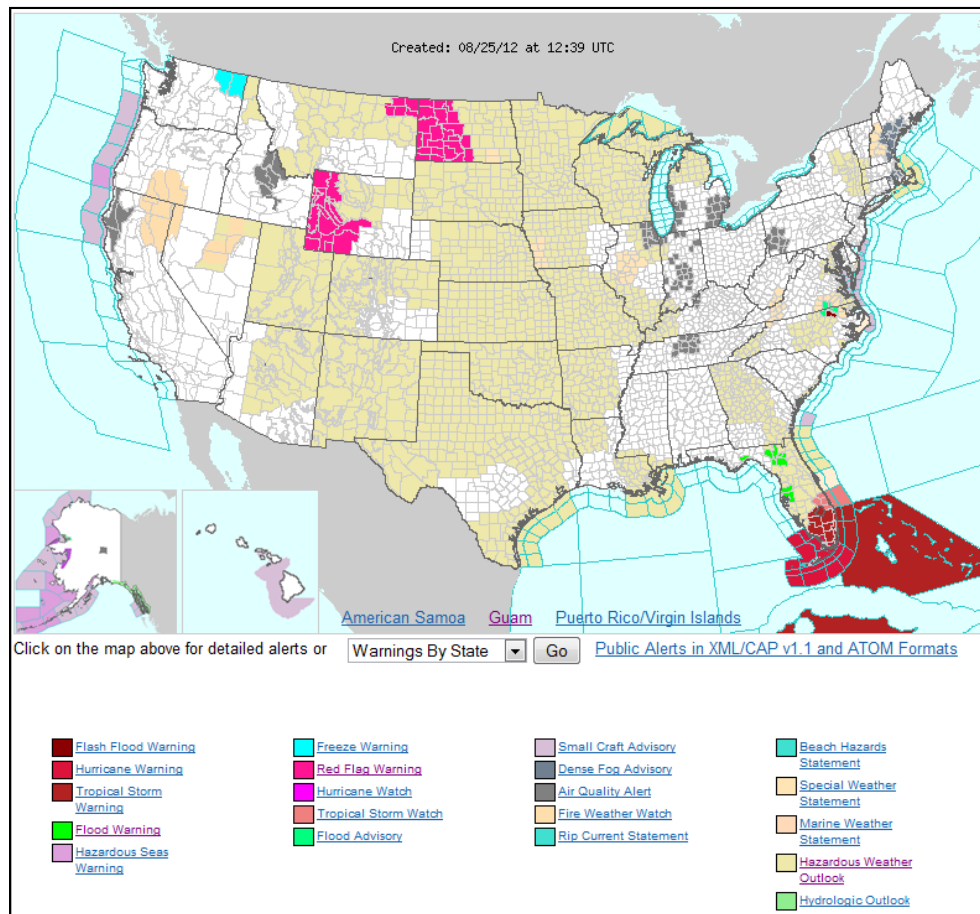
# National Weather Forecast



Weather Forecast for Sat, Aug 25, 2012, issued 4:40 AM EDT  
DOC/NOAA/NWS/NCEP/Hydro-meteorological Prediction Center  
Prepared by Monarski based on HPC, SPC, and NHC forecasts



# Active Watches/Warnings

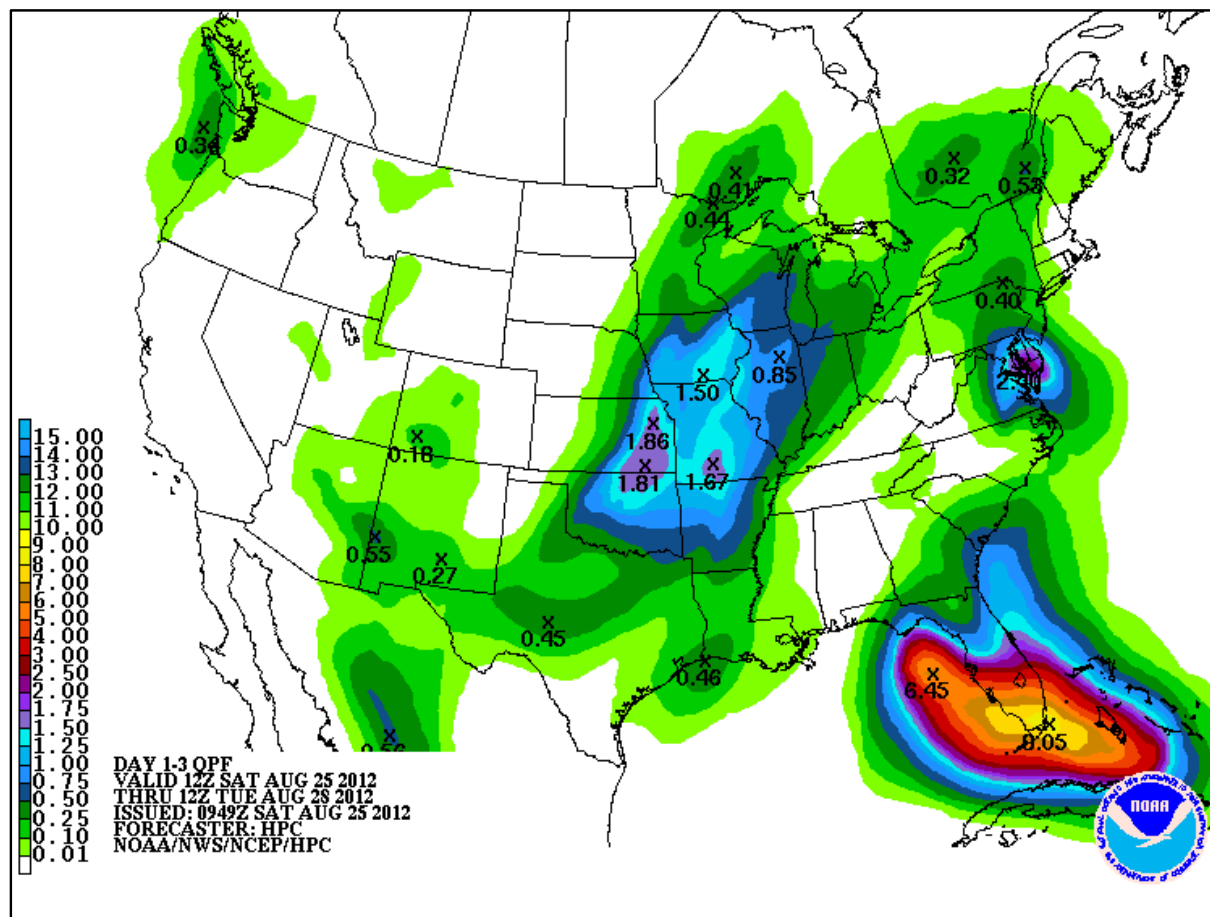




# Precipitation Forecast 1-3 Day



FEMA

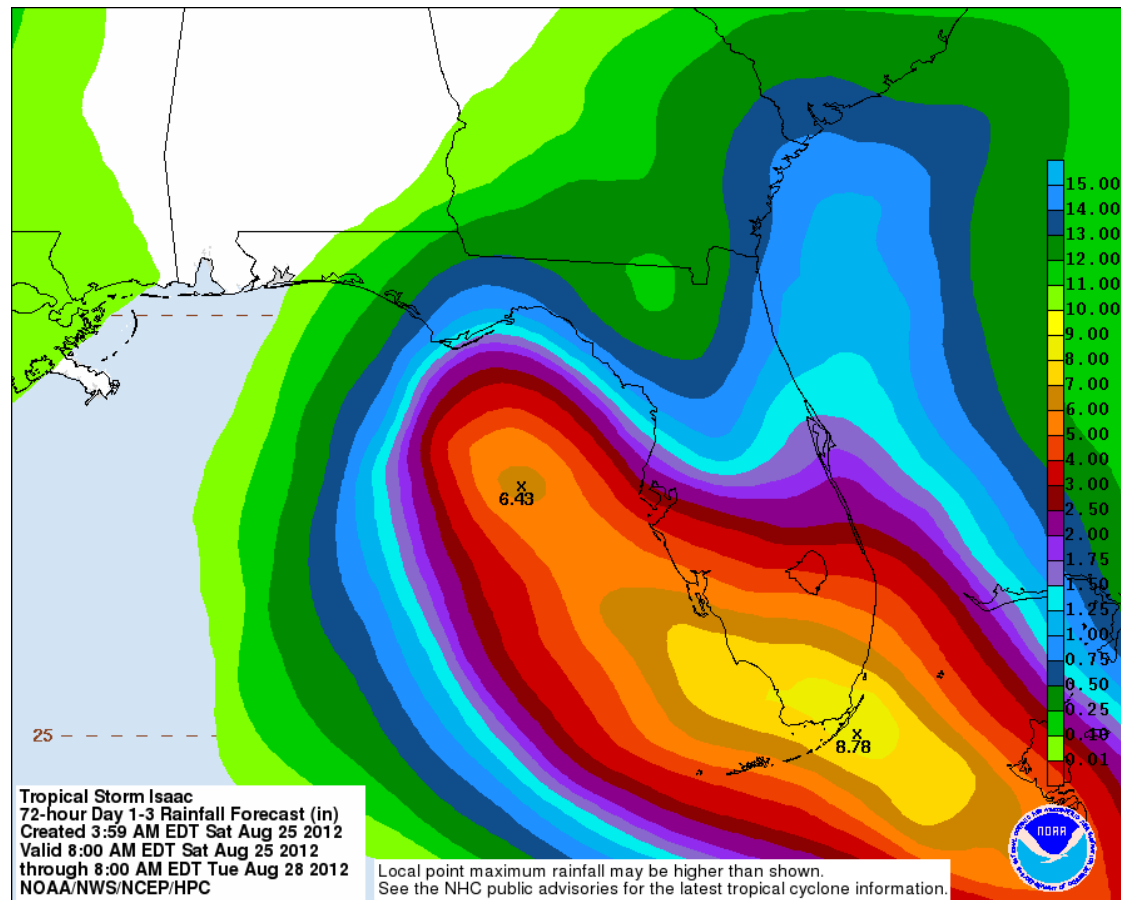


# Precipitation Forecast 1-5 Day – TS Isaac



**FEMA**

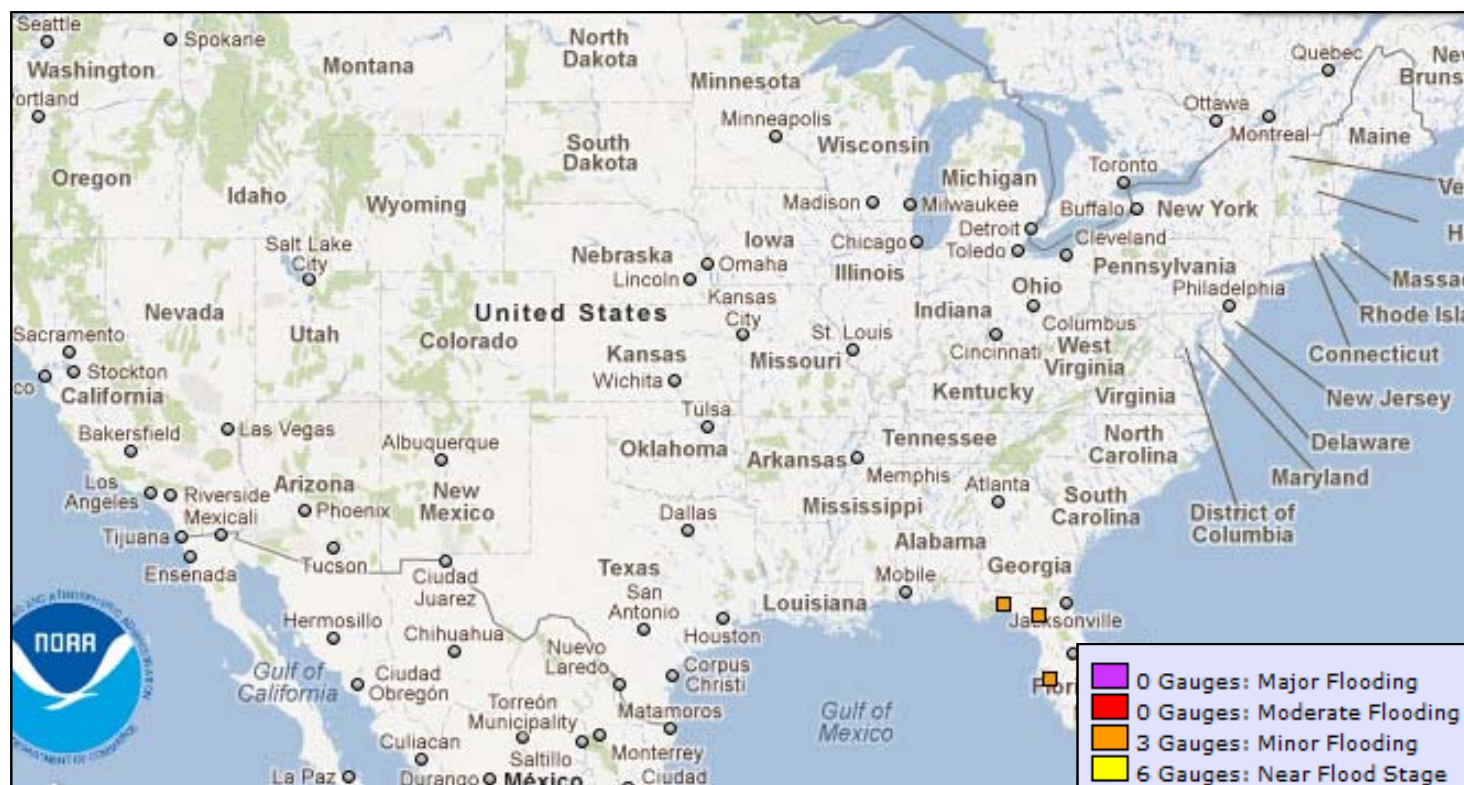
# Precipitation Forecast 1-3 Day – TS Isaac



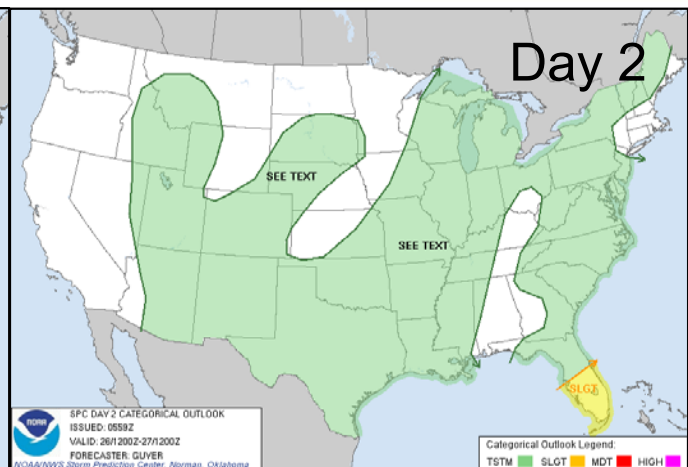
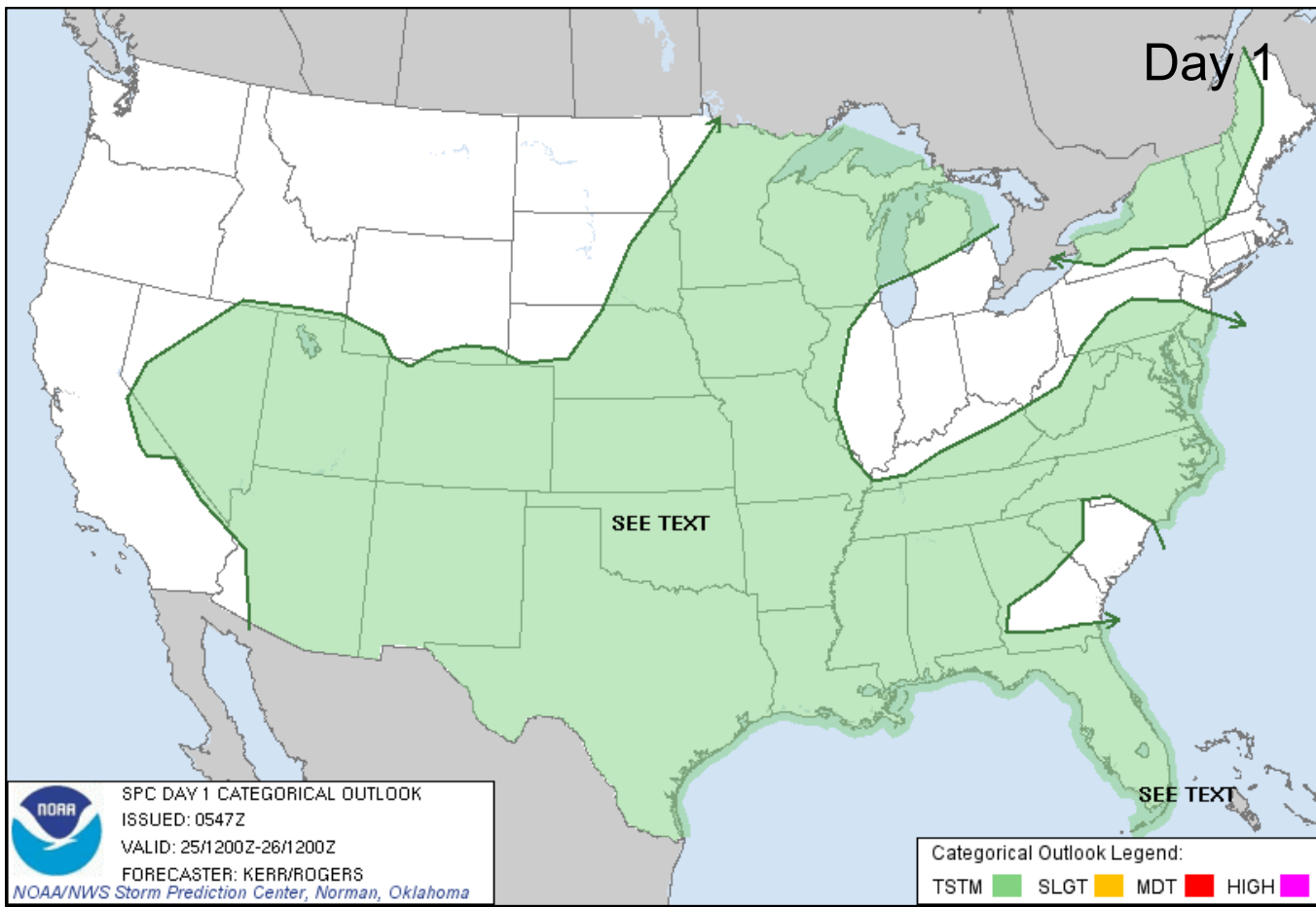
# River Flood Outlook – 7 Day



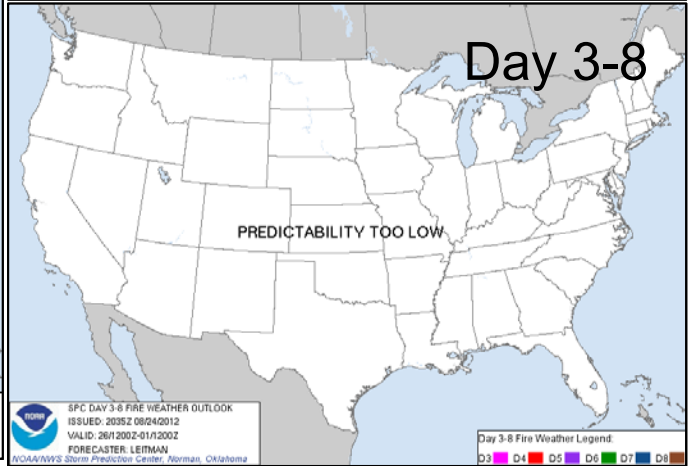
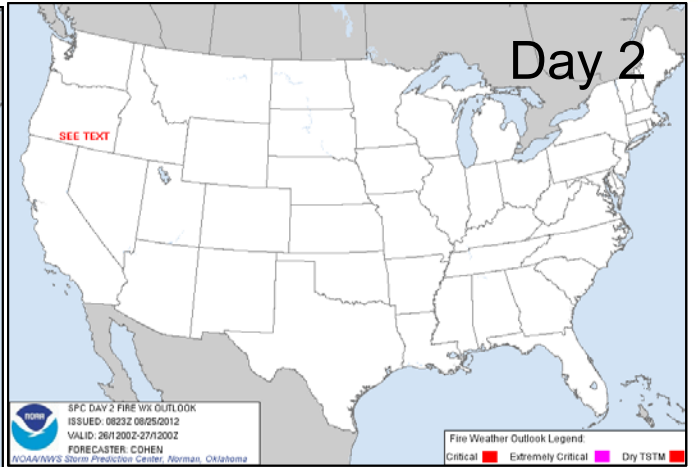
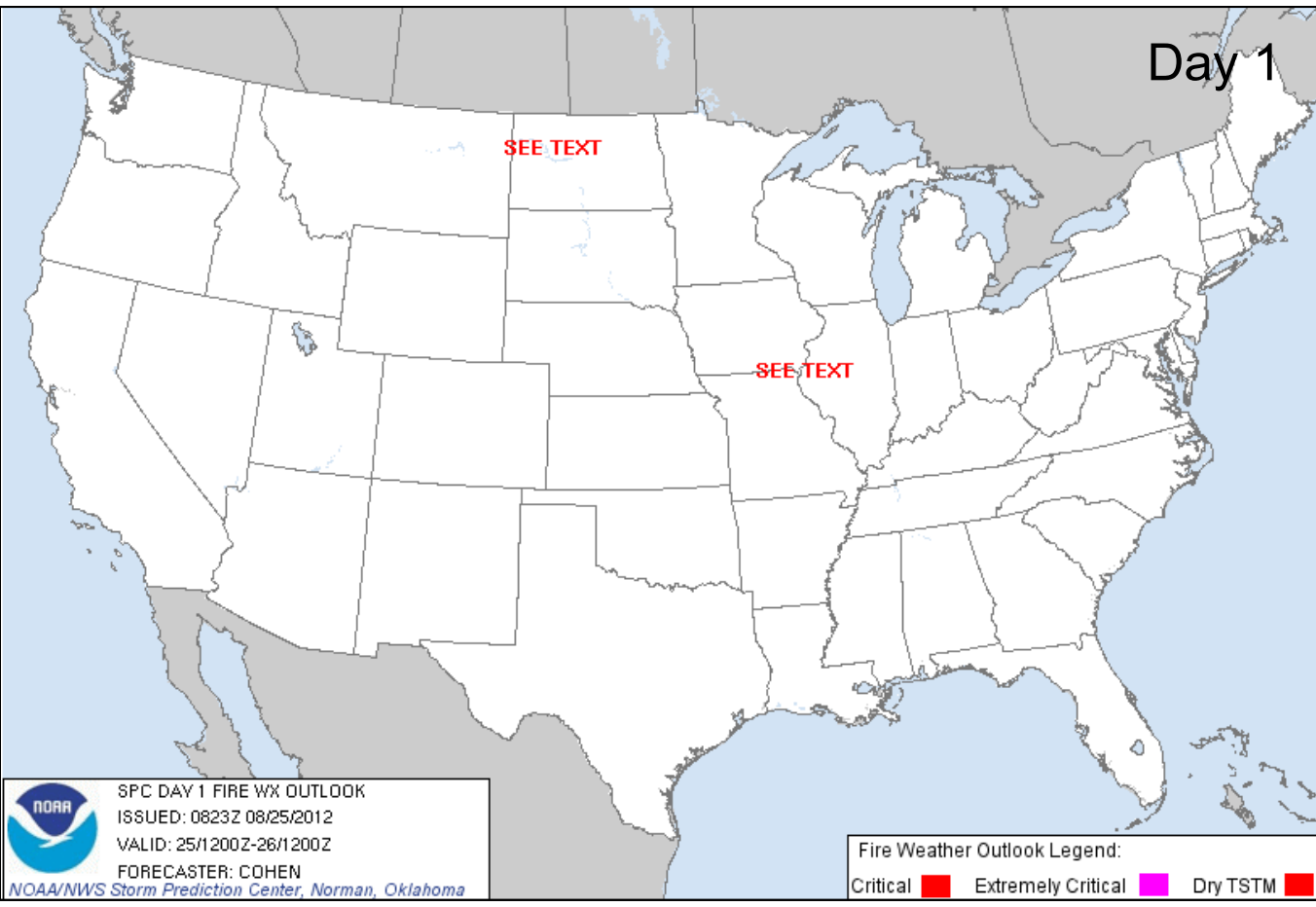
FEMA



# Convective Outlook Days 1-3



# Critical Fire Weather Areas Days 1-8

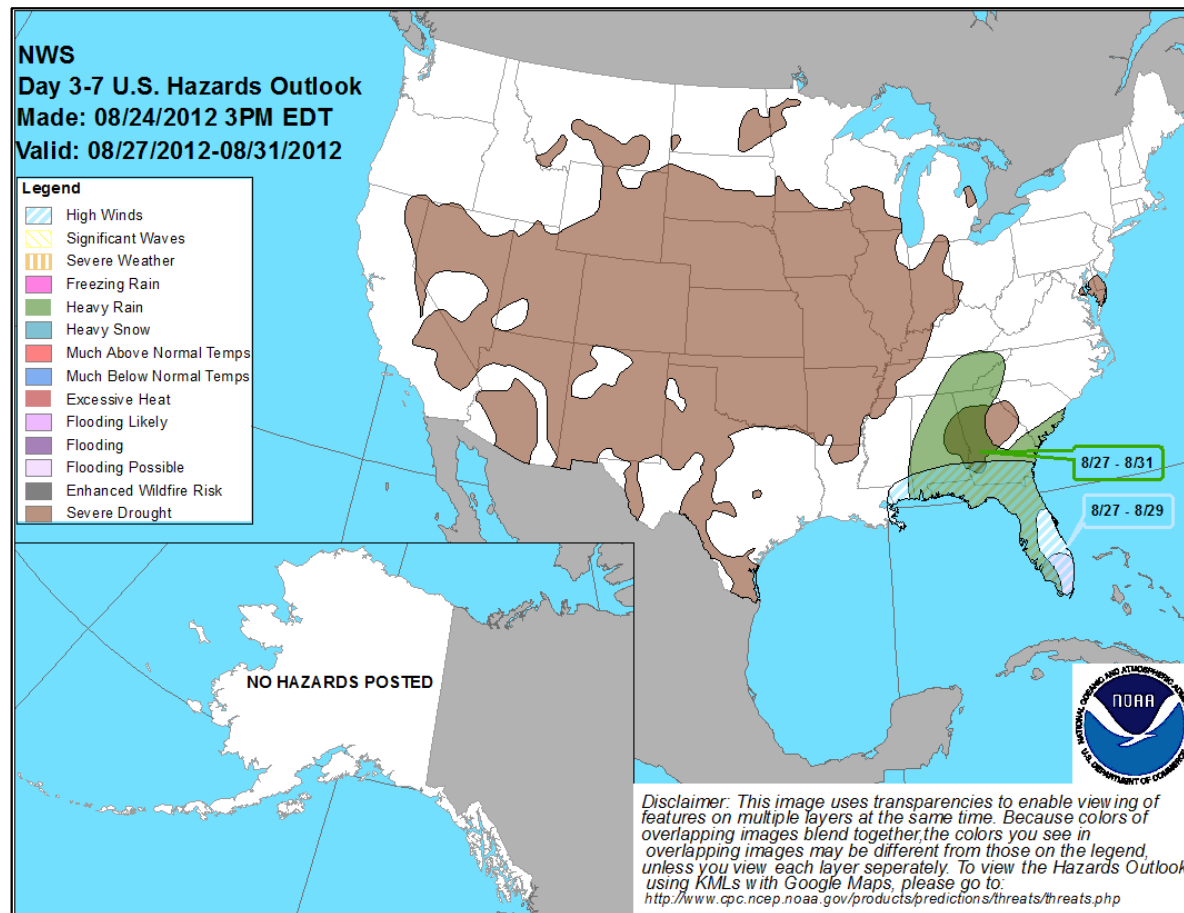




# Hazard Outlook: August 27 - 31



FEMA



# Hazard Outlook: August 27 - September 7



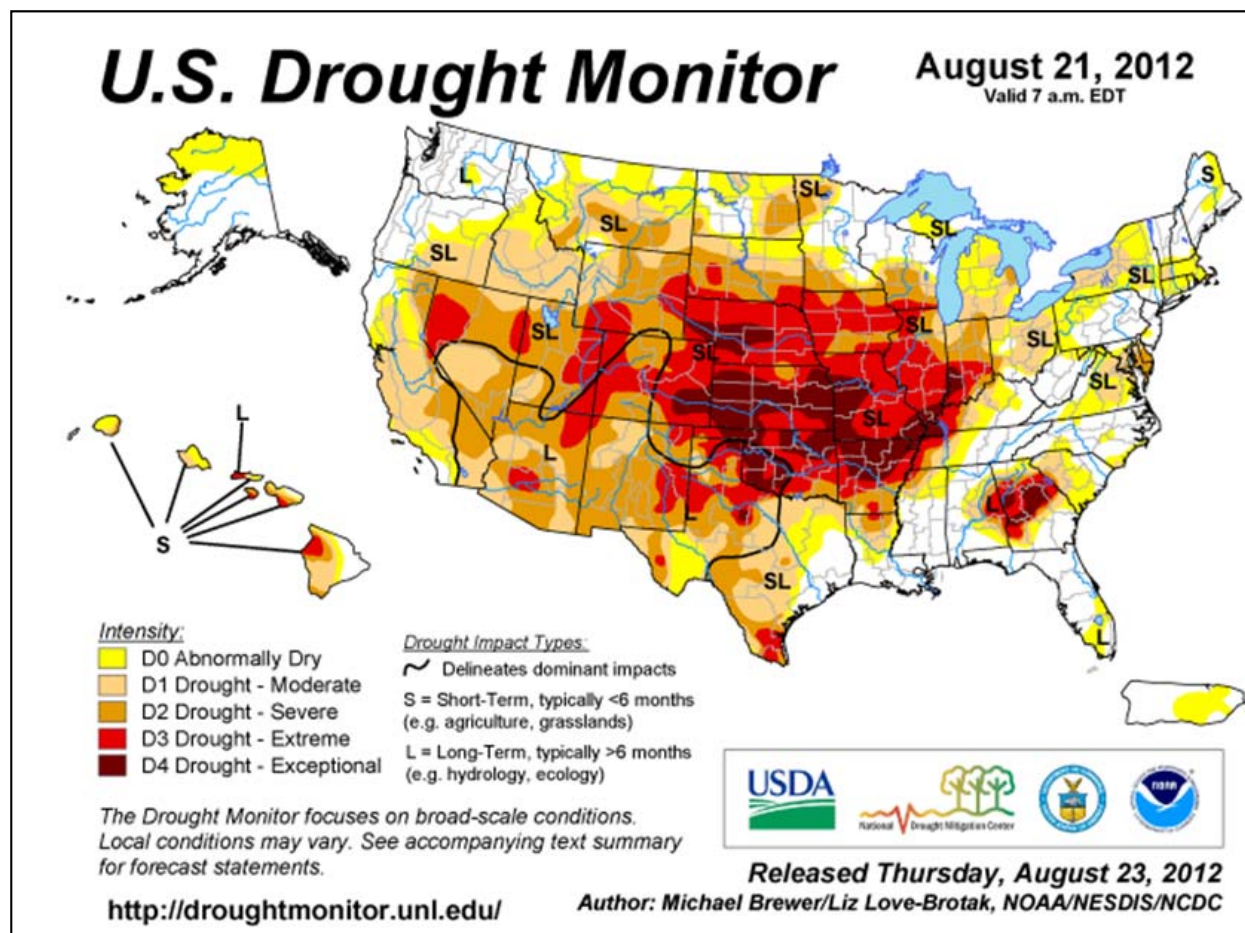
FEMA

- August 27-28 possible flooding across far southern Florida.
- August 27-29 High winds (from south to north) for Florida, southern portions of both Georgia and Alabama, and southern Mississippi.
- August 27-31 Heavy rain (from south to north) for a large portion of the southeast including the Upper Tennessee Valley.
- Severe drought for parts of the southeast, Midwest, Lower/Middle Mississippi Valley, Great Plains, Rio Grande Valley, Rockies, Southwest, Great Basin, Maryland, Delaware, And Hawaii.

# Drought Monitor as of August 21, 2012



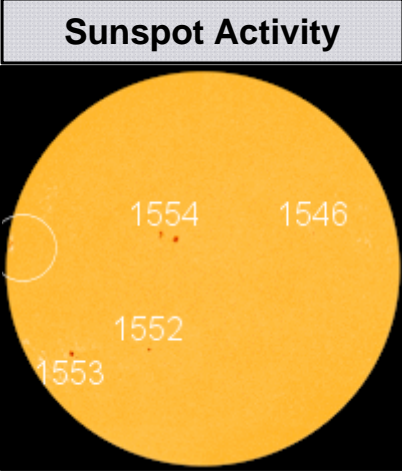
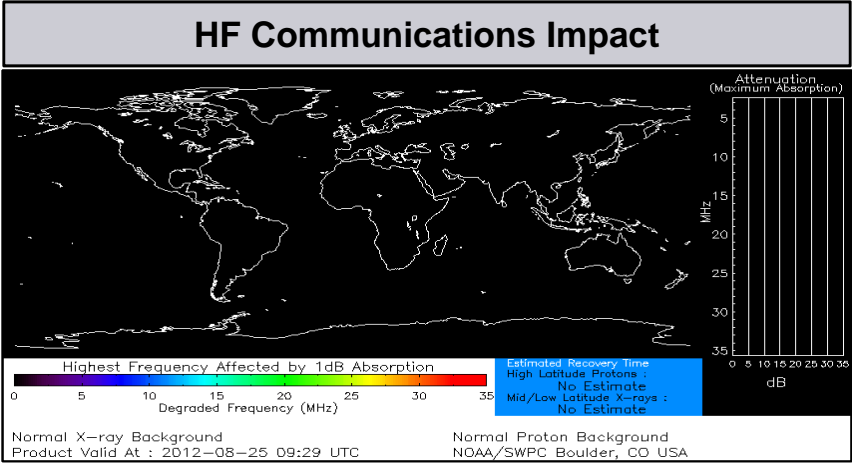
FEMA



# Space Weather



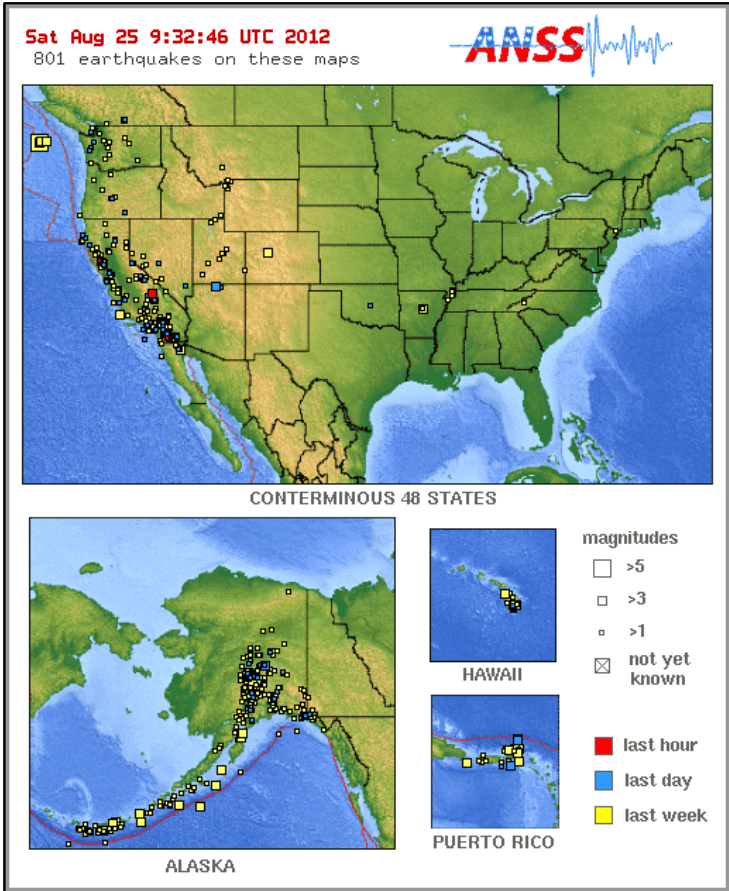
NOAA Scales Activity Range 1 (minor) to 5 (extreme)	Past 24 Hours	Current	Next 24 Hours
Space Weather:	None	None	None
• Geomagnetic Storms	None	None	None
• Solar Radiation Storms	None	None	None
• Radio Blackouts	None	None	None



# Significant Earthquake Activity – U.S.



No significant activity

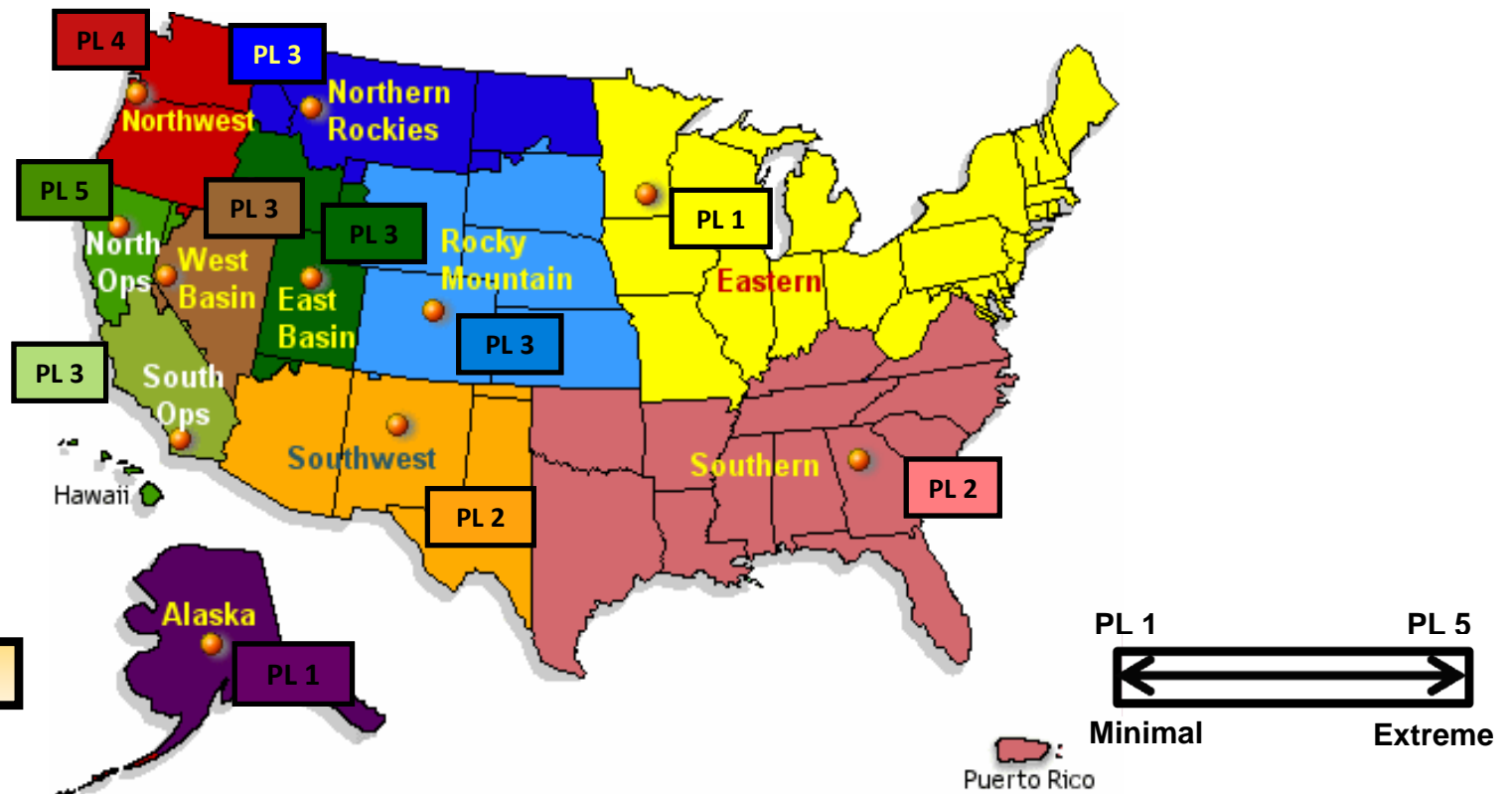


# US Wildland Fire Preparedness Levels



## National Preparedness Level: 4

Three or more Geographic Areas are experiencing incidents requiring Type 1 and 2 IMTs. Competition exists between Geographic Areas. Nationally, 60 percent of Type 1 and 2 IMTs and crews are committed..



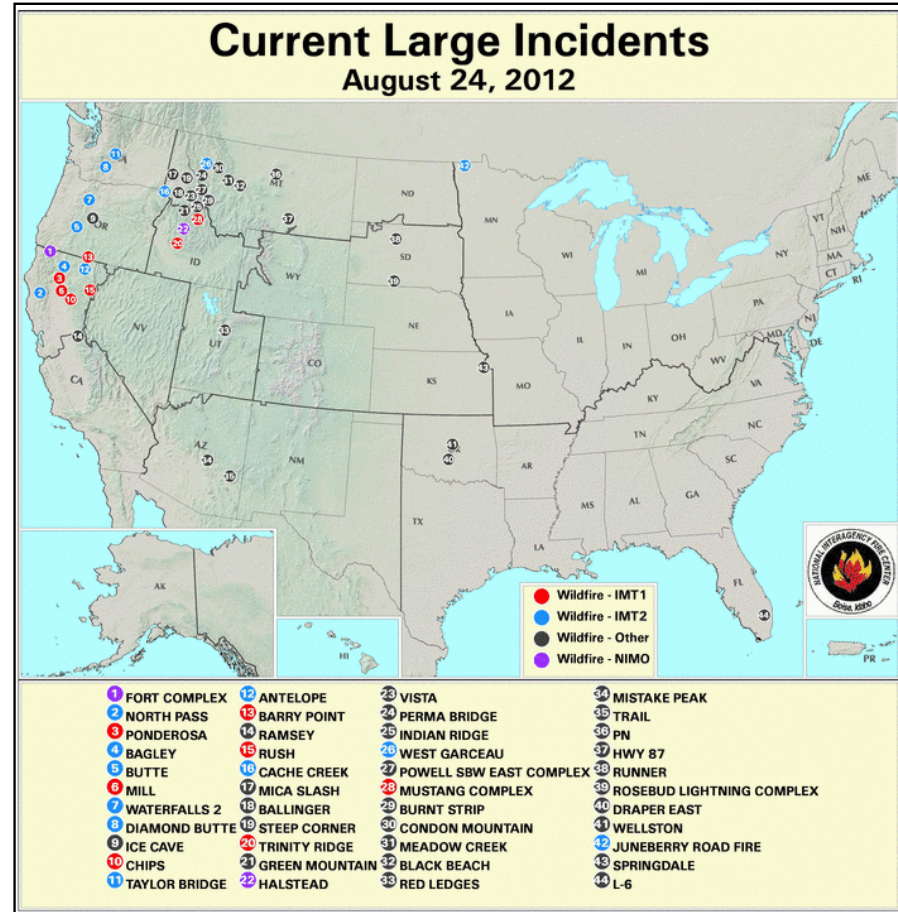




# National Fire Activity

## August 25, 2012:

- National Preparedness Level: 4
- Initial Attack Activity: Light (151)
- New Large Fires: 12
- Large Fires Contained: 10
- Uncontained Large Fires: 27
- Area Command Teams committed: 1
- NIMOs committed: 2
- Type 1 IMT(s) committed: 8
- Type 2 IMT(s) Committed: 10
- States Affected: CA, ID, ND, MT, OR, WA, MN, OK



# Western Wildfire Summary



Fire Name (County)	FMAG #	Acres burned	% Contained	Evacuations (Type)	Structures Threatened	Structures Destroyed	Fatalities / Injuries
California (2)							
Chips Fire (Plumas County, CA)	Not Requested	64,214 (+1,067)	55%	Yes (Mandatory)	940	7	0/16
Ponderosa Fire (Tehama/Shasta Counties)	5007-FM-CA August 19	28,098 (+120)	71% (+3)	No	340 (-600)	84	0/4
Idaho (2)							
Halstead Fire (Custer County, ID)	Not Requested	97,530 (-294)	7%	Yes (Voluntary)	417	0	0/4
Trinity Ridge Fire (Elmore County, ID)	5006-FM-ID August 15	109,713 (+4,503)	5%	Yes (Mandatory)	1,059	12	0/5



FEMA

# Ponderosa Fire, CA

Fire Name	Location	Acres burned	% Contained	Est. Full Containment	FMAG	Structures Lost / Threatened	Fatalities / Injuries
Ponderosa	Tehama/Shasta Counties	28,098 (+120)	71% (+3)	August 27, 2012	FEMA-5007-FM-CA August 19, 2012	84 / 340	0 / 4

- Located near Shingletown (pop 2,283) and SE of Redding in northern California
- Some evacuations remain in effect
- 1 ARC shelter open with no occupants
- CAL Fire IMT 1 with 2,324 (-95) total personnel responding
- Shasta County EOC fully activated; Tehama County EOC not activated
- CAL SEOC not activated
- FEMA Region IX monitoring
- Governor of California issued emergency proclamation for Plumas (Chips Fire), Shasta and Tehama Counties (Ponderosa Fire)



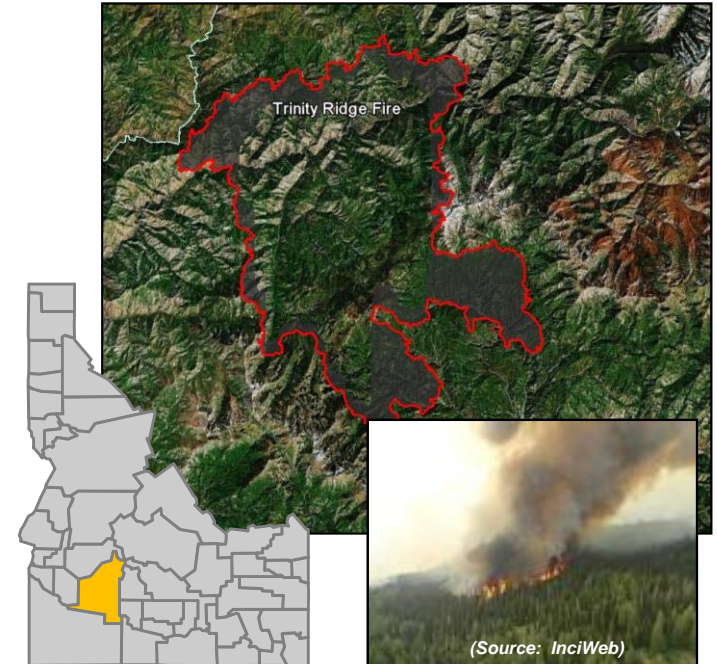


FEMA

# Trinity Ridge Fire, ID

Fire Name	Location	Acres burned	% Contained	Est. Full Containment	FMAG	Structures Lost / Threatened	Fatalities / Injuries
Trinity Ridge	Elmore County	109,713 (+4,503)	5%	October 15, 2012	FEMA-5006-FM-ID August 15, 2012	12 / 1,059	0 / 5

- Located 7 miles NW of Featherville, ID (pop 600)
- Mandatory evacuations remain in effect
- ▲ 1 ARC shelter open with 7 occupants
- ▲ Type 1 IMT assigned with 1,440 (+4) personnel responding
- Idaho State EOC partially activated
- FEMA Region X monitoring



(Source: InciWeb)

# Disaster Requests & Declarations



Declaration Requests in Process		Requests APPROVED (since last report)	Requests DENIED (since last report)
0	Date Requested	1	0
NM – DR Flooding	August 10, 2012	<b>August 24, 2012</b>	

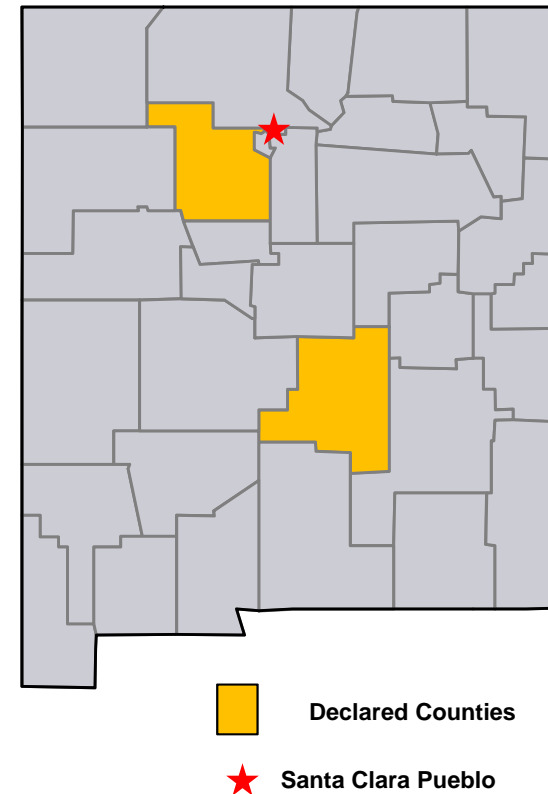
# Disaster Declaration – New Mexico



FEMA

## FEMA-4079-DR-NM

- Approved August 24, 2012
- New Mexico request for Major Disaster Declaration for flooding beginning June 22 - July 12, 2012.
- Declaration provides Public Assistance for Lincoln and Sandoval counties and the Santa Clara Pueblo.
- All counties and Indian Tribes in the State of New Mexico are eligible to apply for assistance under the Hazard Mitigation Grant Program.
- FCO is Nancy M. Casper of the National FCO Program.





# Disaster Amendments



Declaration Amendment Number	Effective Date	Amendment Action

# FMAG Requests and Declarations



Action (since last report)	Total	FMAG No. and State
Requests DENIED	0	
Requests APPROVED	0	
Requests Expected Next 24 Hours	0	None as of 1200 8/24/12

As of August 24, 2012	2012	2011*
FMAGs Approved	34	90
FMAGs Denied	15	28
* Cumulative FMAG figures as of this date in 2011		

# OFDC Cadre Member Status



## Federal Coordinating Officer

Deployed	Detailed	Available	Not Available	Total
18	3	13	3	37
Total Available	Type 1	Type 2	Type 3	Type 4
16*	3*	11	1	0

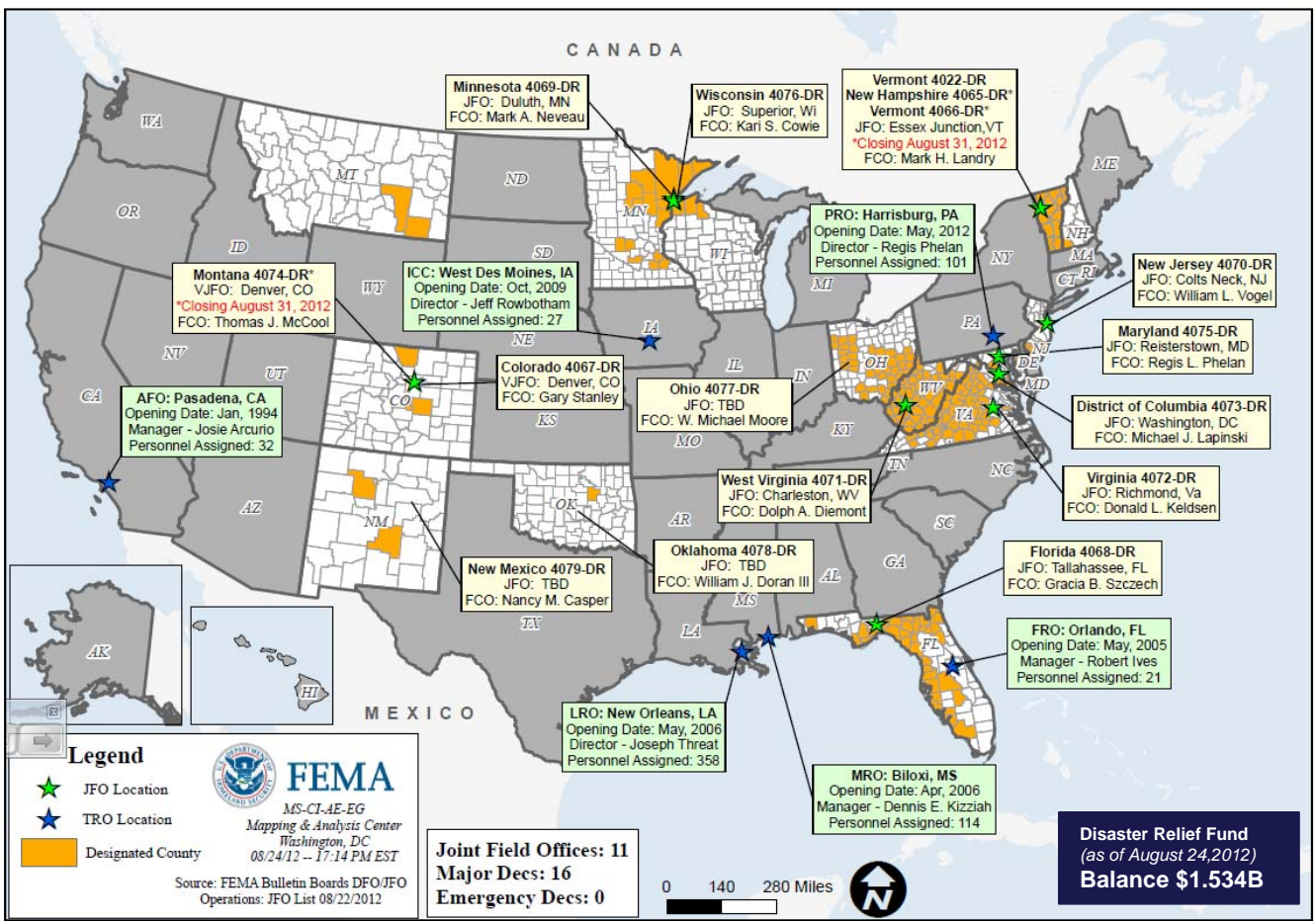
\* All Type 1 FCOs are available unless deployed to a Level 1 event

## Federal Disaster Recovery Coordinator

Positions	On Board	Available	Deployed	Pending Hire
10	5	4	1	0

As of: 08/24/12

# Open Field Offices as of August 25, 2012



# Joint Preliminary Damage Assessments



				Number of Counties			
Region	State	Event	IA/PA	Requested	Ongoing	Complete	Begin/End
		<b>No Preliminary Damage Assessments</b>					

# MCOV Fleet / Deployment Status



FEMA

MCOV FLEET STATUS						MCOV DISASTER SUPPORT DEPLOYMENTS					
Location	Units Assigned	Available FMC	Deployed Committed	PMC	NMC	DR-State	OPCON	En Route	Unit Prep	Open Request	Notes:
DC Atlanta	21	21									
DC Cumberland	10	10									
DC Ft Worth	15	15									
DC Moffett	6	6									
Holliston, MA	1	1									
Denver, CO	2	2									
Bothell, WA	2	2									
<b>TOTAL</b>	<b>57</b>	<b>57</b>	<b>0</b>	<b>0</b>	<b>0</b>	<b>TOTAL</b>	<b>0</b>	<b>0</b>	<b>0</b>	<b>0</b>	
Included in above totals, units en route for turn-in.											

Fully Mission Capable	57
Partially Mission Capable	0
Non-Mission Capable	0
<b>Total Not Deployed</b>	<b>57</b>

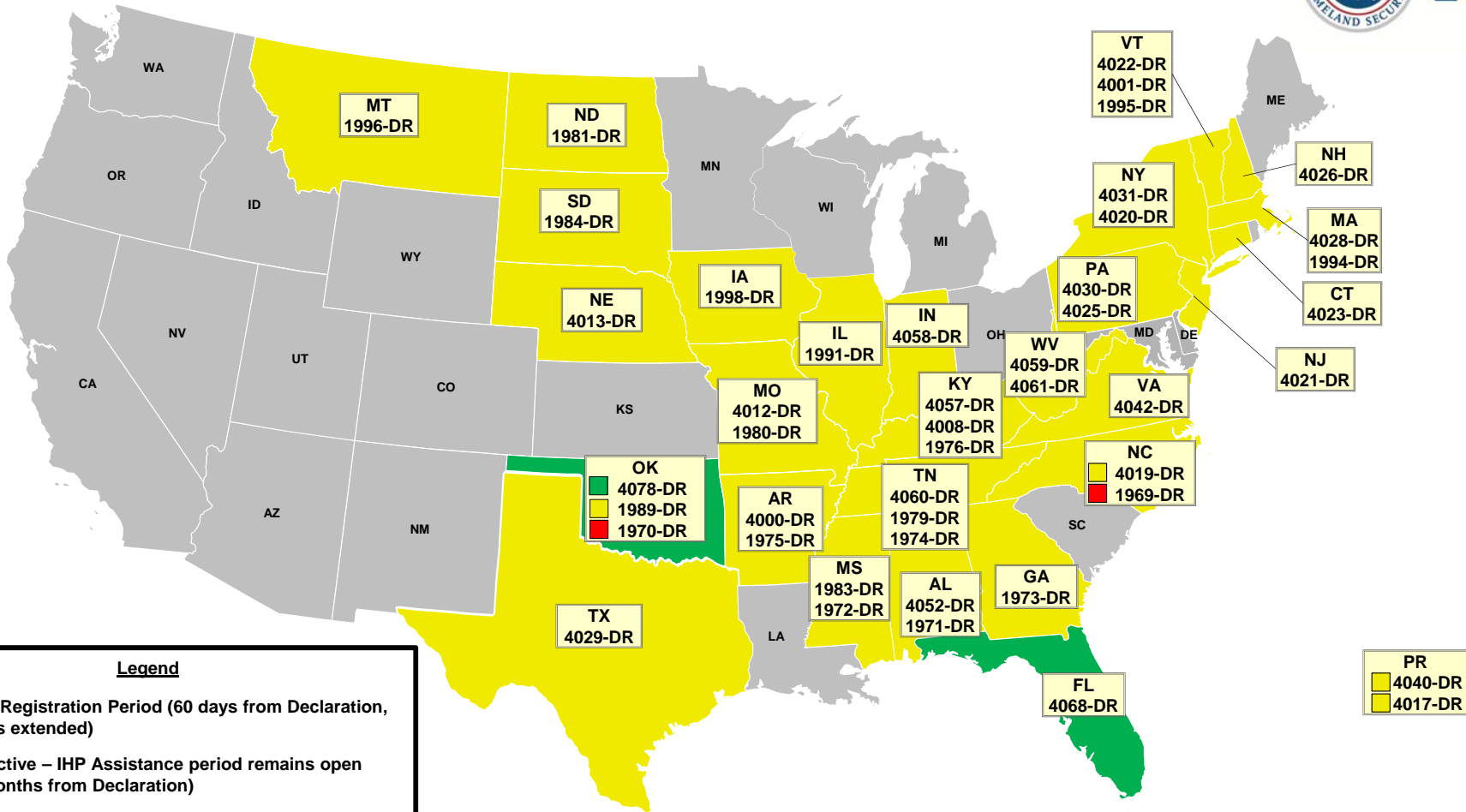
Data as of: 08/23/12 @ 1500



# Active IA Disasters



FEMA



# of DRs	Legend
2	Open Registration Period (60 days from Declaration, unless extended)
42	IHP Active – IHP Assistance period remains open (18 Months from Declaration)
2	IHP Closing Within 60 Days

PR
4040-DR
4017-DR

Data as of: 08/23/12 @ 1500

# IA Registration Statistics



**FEMA**

## Cumulative as of August 23, 2012 @ 1500

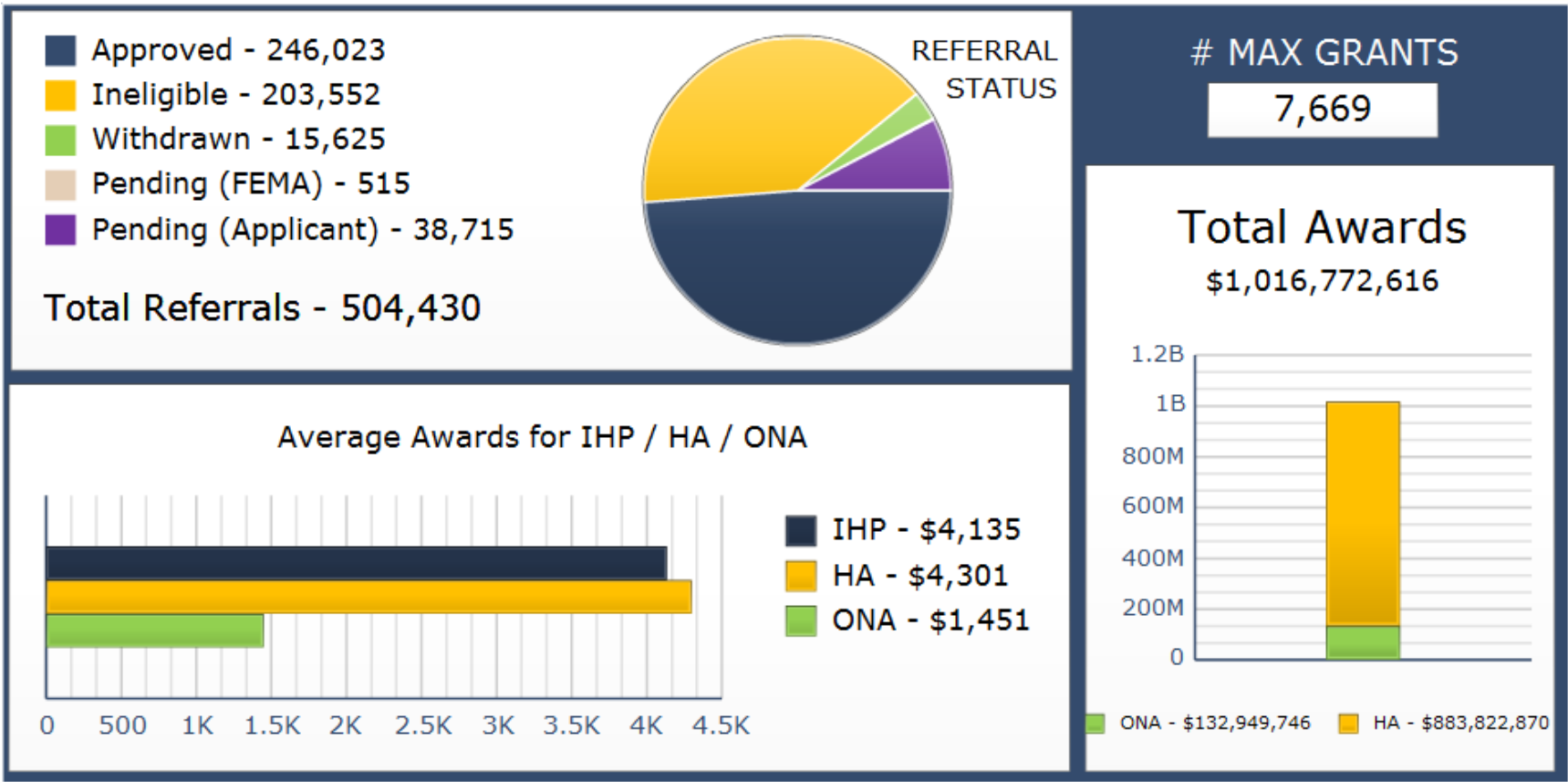
DR # - State	Registrations	Approved Applicants	Total HA Approved	Total ONA Approved	Total IHP Approved
4068 - FL	15,656	5,791	\$19,037,840	\$2,669,188	\$21,707,028
4078 - OK	93	0	\$0.00	\$0.00	\$0.00
<b>Totals</b>	<b>15,749</b>	<b>5,791</b>	<b>\$19,037,840</b>	<b>\$2,669,188</b>	<b>\$21,707,028</b>
24 hour change	+217	+63	+\$173,224	+\$22,296	+\$195,520

## NPSC Call Data for August 22, 2012

Total NPSC Calls Answered (Helpline + Registration Intake)	1,348
Average time to answer call	17 seconds



# IHP Referral Status & Awards



Data includes the 46 IHP Active DRs  
# Max Grants = Applicants awarded maximum IHP (\$30,200 as of FY2012)

Data as of: 08/23/12 @ 1500

# Housing Inspection Statistics



<b>Data as of August 23, 2012 @ 1600</b>					
<b>DR # - State</b>	<b>Inspectors</b>	<b>Inspections Assigned</b>	<b>Inspections Completed</b>	<b>Inspection % Complete</b>	<b>Turnaround Time (Days)</b>
<b>4068 - FL</b>	19	12,876	12,596	97.8%	1.7
<b>4078 - OK</b>	5	97	0	0%	0.0
<b>TOTAL</b>	<b>24</b>	<b>12,973</b>	<b>12,601</b>	<b>97.1%</b>	<b>1.7</b>
<b>24 hour change</b>	<b>+7</b>	<b>+214</b>	<b>+125</b>	<b>-1.1%</b>	<b>+0.0</b>

\* Only displaying inspectors for DRs that currently have open registration periods

# IMAT Status



National Teams					
Team	Status	Team	Status	Team	Status
BLUE (East)	Available/Mission Capable	WHITE (Central)	Assigned/Deployed (PR)	RED (West)	Available/Mission Capable
Regional Teams					
Team	Status	Team	Status	Team	Status
Region I	Available/Mission Capable	Region V	Assigned/Deployed (OH)	Region IX-1	Available/Mission Capable
Region II	Assigned/Deployed (USVI)	Region VI-1	Assigned/Deployed (LA)	Region IX-2	Available/Partially Mission Capable
Region III	Assigned/Deployed (VA)	Region VI-2	Assigned/Deployed (OK)	Region X	Available/Mission Capable
Region IV-1	Available/Mission Capable	Region VII	Available/Mission Capable		
Region IV-2	Assigned/Deployed (FL)	Region VIII	Available/Mission Capable		

= Available/Mission Capable     
  = Assigned/Deployed  
 = Available/Partially Mission Capable     
  = Out-of-Service

# Urban Search & Rescue



INCIDENT SUPPORT TEAMS (Red-White-Blue) – Monthly On Call Rotation											
JAN	FEB	MAR	APR	MAY	JUN	JUL	AUG	SEP	OCT	NOV	DEC
WEST				CENTRAL				EAST			
Team		Status		Team		Status		Team		Status	
CA-TF1		Available		AZ-TF1		Available		FL-TF1		Available	
CA-TF2		Available		CO-TF1		Available		FL-TF2		Available	
CA-TF3		Available		IN-TF1		Available		MA-TF1		Available	
CA-TF4		Available		MO-TF1		Available		MD-TF1		Available	
CA-TF5		Available		NE-TF1		Available		NY-TF1		Available	
CA-TF6		Available		NM-TF1		Non-operational		PA-TF1		Conditionally Available	
CA-TF7		Available		NV-TF1		Conditionally Available		VA-TF1		Available	
CA-TF8		Available		TN-TF1		Conditionally Available		VA-TF2		Available	
WA-TF1		Available		TX-TF1		Available		OH-TF1		Available	
				UT-TF1		Available					

= Available/Mission Capable     
  = Available/Partially Mission Capable     
  = Out-of-Service     
  = Assigned/Deployed



# RRCC / Regional Watch Center Status



Region	RRCC	Regional Watch Center
I	Watch/Steady State	Maynard MOC (24/7)
II	Watch/Steady State	24/7
III	Watch/Steady State	24/7
IV	Level III (Incident Monitoring)	24/7
V	Watch/Steady State	24/7
VI	Watch/Steady State	Denton MOC (24/7)
VII	Level III (Monitoring 24/7)	24/7
VIII	Watch/Steady State	Denver MOC (24/7)
IX	Watch/Steady State	24/7
X	Watch/Steady State	Bothell MOC (24/7)

# National Team Status



Team/Status	Current Location	Remarks
National Watch Center	Washington, DC	Enhanced Watch (24/7)
NRCC	Washington, DC	On Alert
HLT	Miami, FL	Activated
DEST	Washington, DC	Not Activated
Mission Capable	Partially Mission Capable	Not Mission Capable

## TED-EX Exercise Highlights (30 day forecast)

Date	Exercise	Event	Capability Focus	Target Audience/ FEMA Participation	Location
8/22	DHS FMD TTX	FPC	Animal Disease Emergency	Interagency	TBD
8/30	NLE 12	FEMA AAC	Multiple	All FEMA	FEMA HQ, Washington, DC
9/6	DHS FMD TTX	TTX	Animal Disease Emergency	Interagency	TBD
9/17-18	NLE 12	AAM	Multiple	Interagency	Kellogg Conference Hotel Gallaudet Washington, DC
9/18-20	Ardent Sentry 13	Post IPC-IPR	Multiple	Interagency	Colorado Springs
9/26-27	Amber Waves	Workshop	Multiple	IAKS/MO State Departments of Health, Agriculture and Natural Resources; EPA; A-Team; FDA; FEMA; USDA; DOE/NNSA	Kansas City  56

As of August 23, 2012



# FEMA

**FEMA's mission is to support our citizens and first responders to ensure that as a nation we work together to build, sustain, and improve our capability to prepare for, protect against, respond to, recover from, and mitigate all hazards.**