



FEMA

Daily Operations Briefing

August 4, 2012

As of 8:30 a.m. EDT

Significant Activity: August 3-4



FEMA

Significant Events: None

Tropical Activity:

- Atlantic – Tropical Storm Ernesto; Tropical Storm Florence; Area 1 (Low/10%)
- Eastern Pacific – Tropical cyclone activity not expected the next 48 hours
- Central Pacific – No tropical cyclones are expected through Sunday evening
- Western Pacific – Tropical Storm 12W (Haikui)

Significant Weather:

- Slight risk of severe thunderstorms – Upper Great Lakes to MO & Lower OH Valley
- Major heat wave over the central US subsides some by the end of the weekend
- Hottest weather of the season to affect parts of OR & WA on Saturday and Sunday
- Critical Fire Weather Areas: Portions of OK, TX, CA and NV
- Red Flag Warnings: CA, NV, extreme southwestern OR, TX & OK
- Space Weather: No space weather storms observed/predicted

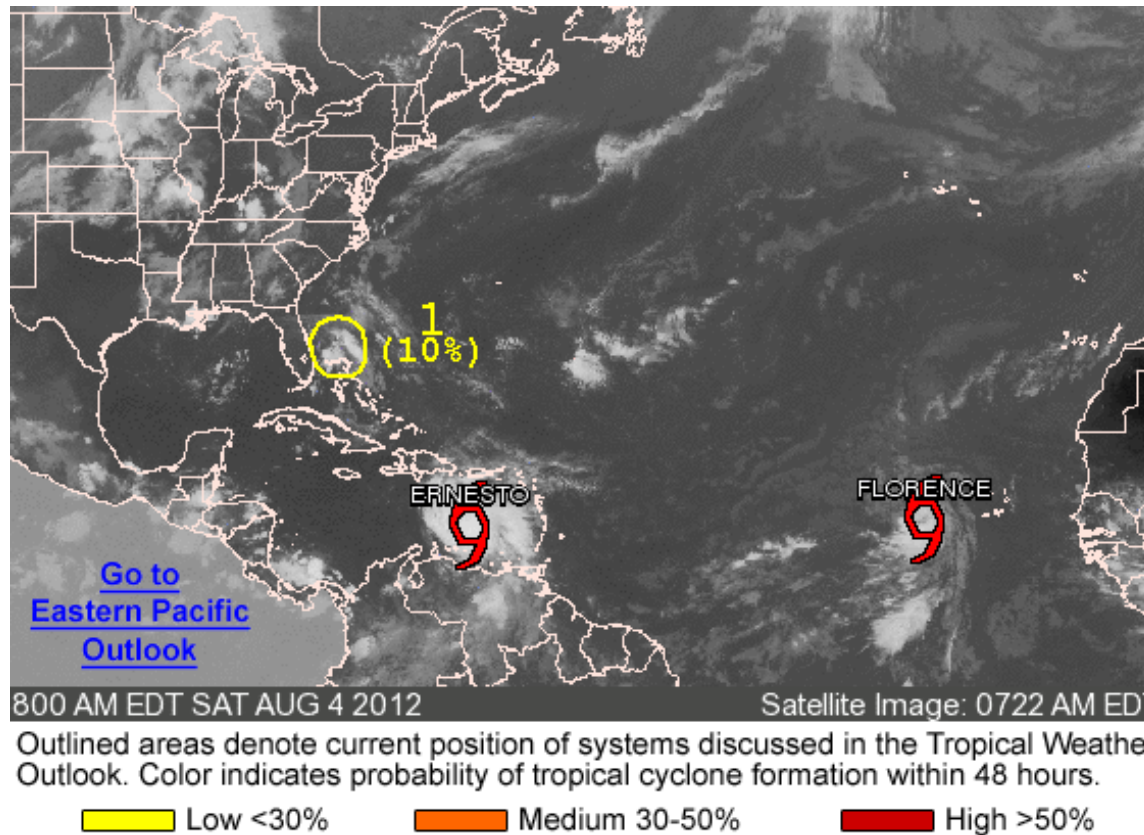
Earthquake Activity: No significant activity

Disaster Declaration Activity: Three FMAGs approved for OK

Atlantic - Tropical Outlook



FEMA



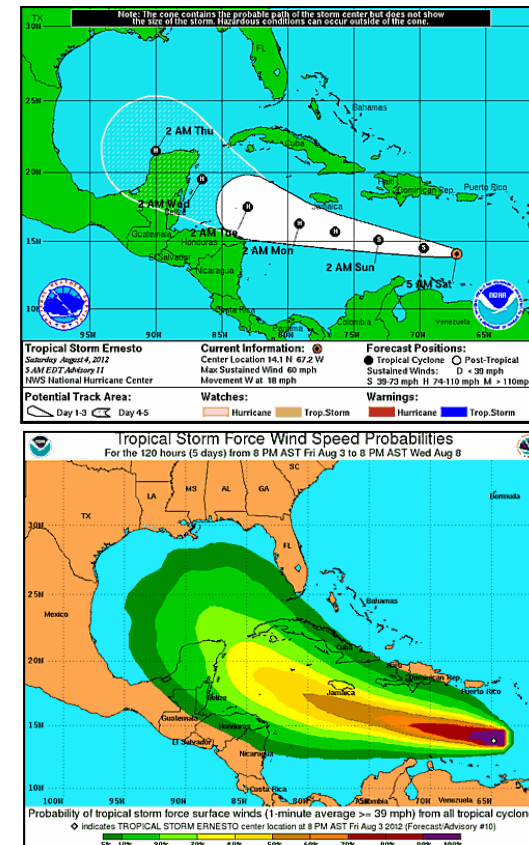
Atlantic – Tropical Storm Ernesto



FEMA

As of 5:00 a.m. EDT

- Located 305 miles SSW of San Juan, Puerto Rico
- Moving towards the west near 18 mph
- General motion is expected to continue for the next 48 hours
- Ernesto will be moving across the eastern/central Caribbean Sea during the next 48 hours
- Maximum sustained winds near 50 mph, w/ higher gusts
- Gradual strengthening forecast in the next 48 hours
- Expected to become a hurricane on Sunday
- Tropical storm-force winds extend outward up to 105 miles, mainly to the north and east of center

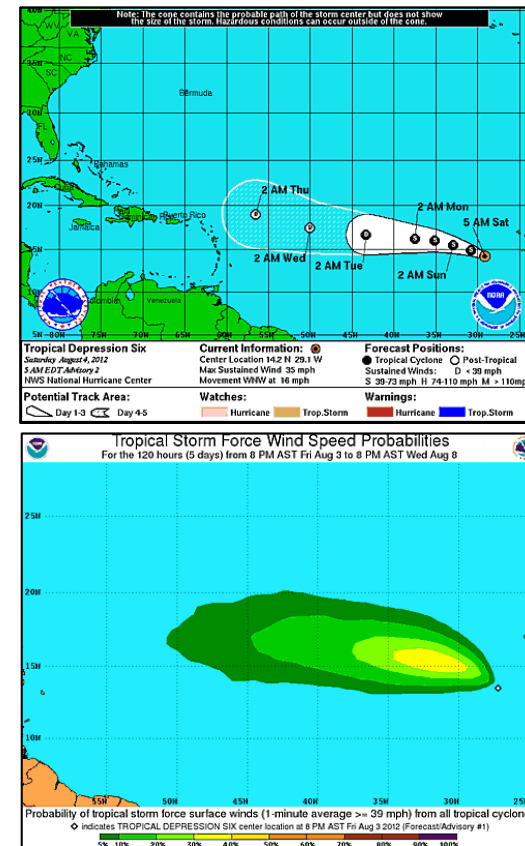


Atlantic – Tropical Storm Florence



As of 8:00 a.m. EDT

- Located 330 miles W of southernmost Cape Verde Islands
- Moving towards the WNW near 16 mph
- General motion at a slightly slower forward speed is expected during the next couple of days
- Maximum sustained winds near 40 mph, w/ higher gusts
- Some strengthening is anticipated during the next 24-48 hrs

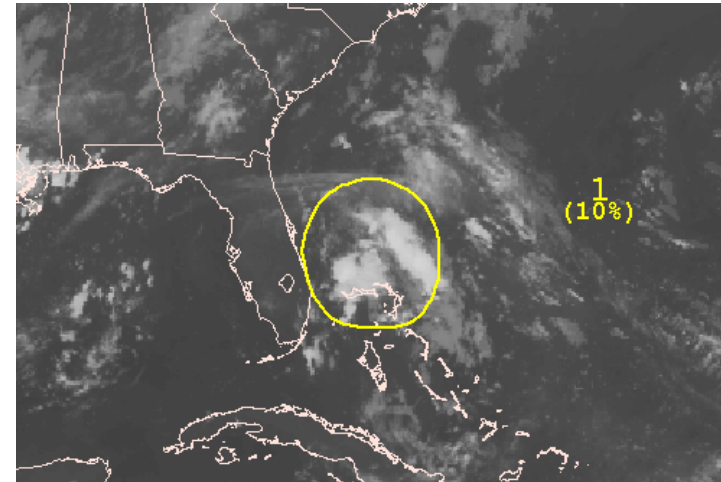


Atlantic – Area 1 / Invest 91L



As of 8:00 a.m. EDT

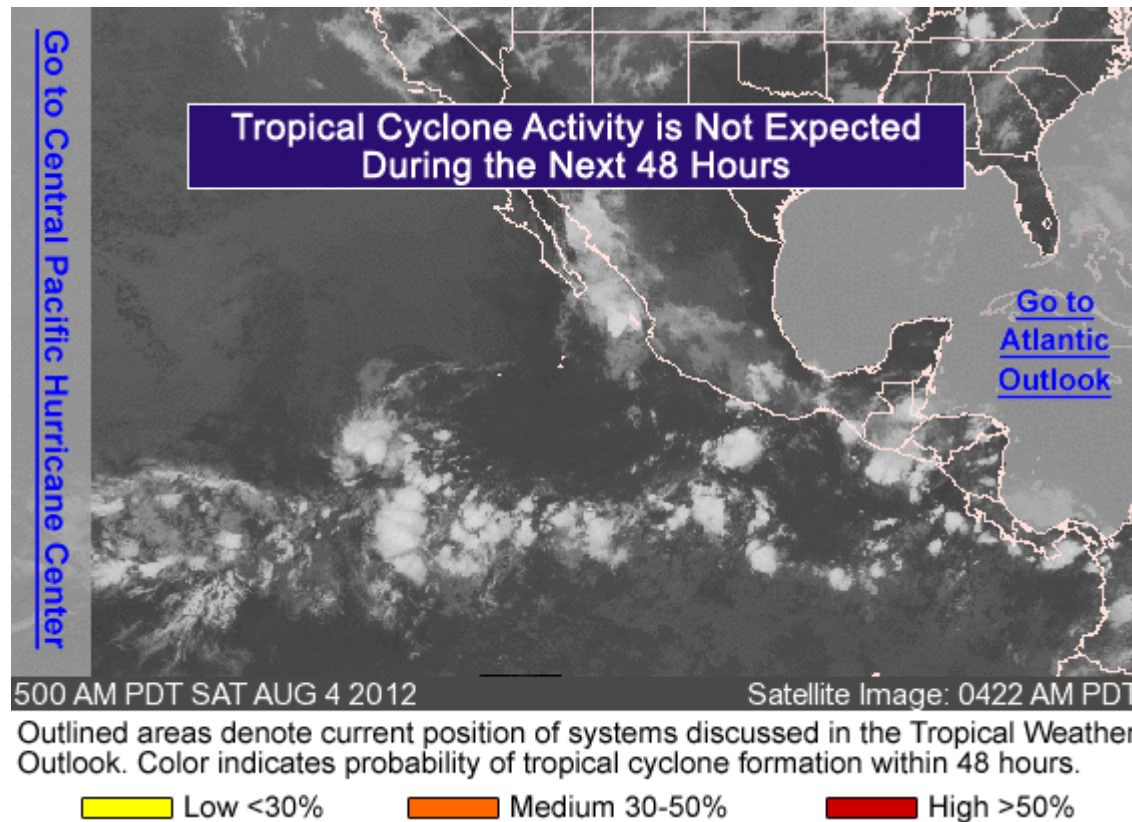
- Shower activity has diminished near a weak low pressure area located about 100 miles ESE of Cape Canaveral, FL
- The low is expected to move inland over the FL peninsula later today without significant development
- This system has a LOW chance (10%) of becoming a tropical cyclone during the next 48 hours



Eastern Pacific -Tropical Outlook



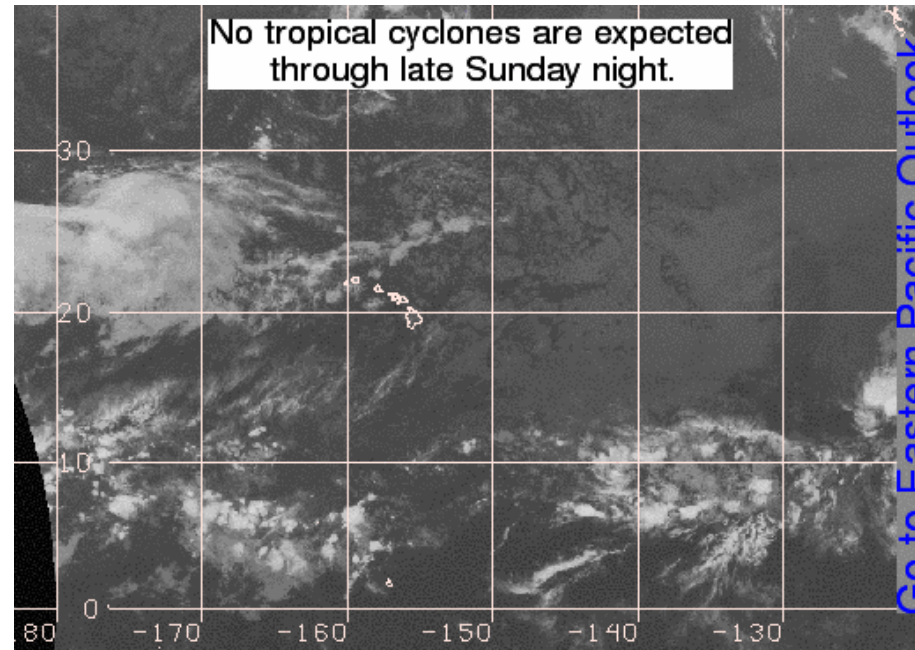
FEMA



Central Pacific - Tropical Outlook



FEMA



200 am HST Sat Aug 4 2012

Satellite Imagery: 100 am HST

Outlined areas denote current position of systems discussed in the Tropical Weather Outlook. Color indicates probability of tropical cyclone formation within 48 hours.

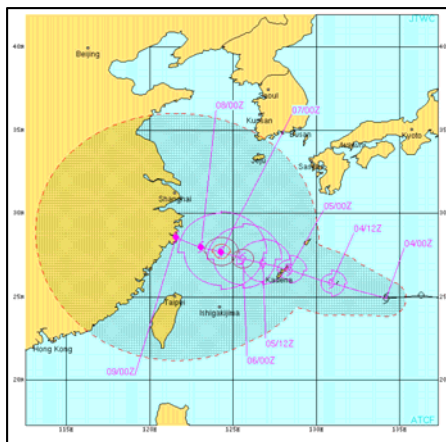
Low <30% Medium 30-50% High >50%

Western Pacific – TS #12 (Haikui)



FEMA

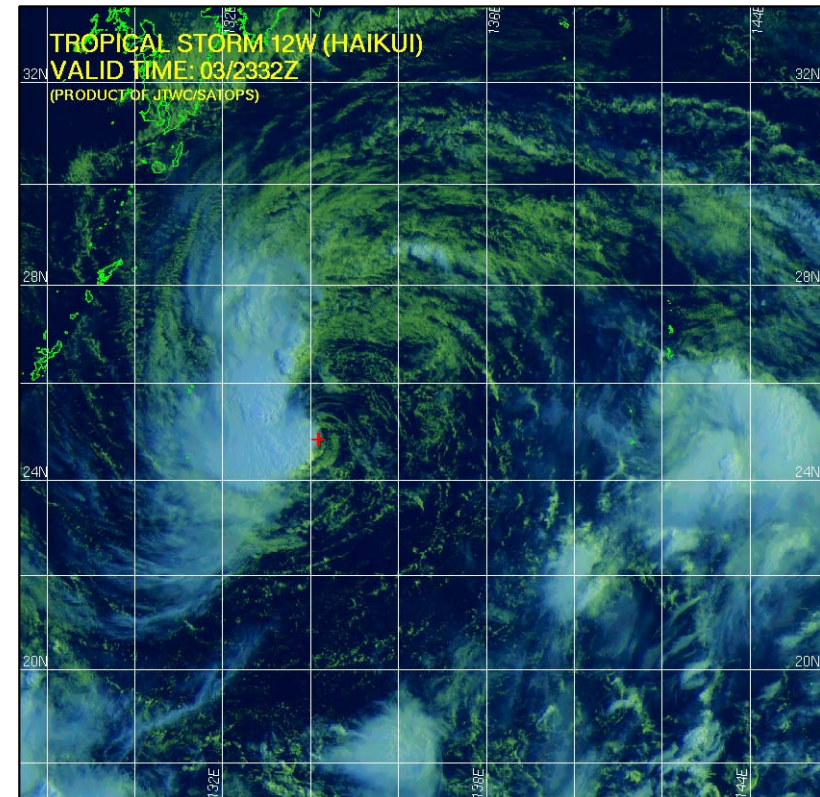
- Located approximately 414 miles ESE of Kadena AB, Okinawa, Japan
- Moving westward at near 15 mph knots over the past six hours
- Winds are 46 mph w/ gusts of 58 mph
- Expected to pass w/in 17 miles of Kadena AB



TROPICAL STORM 12W (HAIKUI) WARNING #6
 WPHN33 PGTW 040300
 040000Z POSIT: NEAR 24.9N 134.2E
 MOVING 265 DEGREES TRUE AT 19 KNOTS
 MAXIMUM SIGNIFICANT WAVE HEIGHT: 17 FEET
 04/00Z, WINDS 035 KTS, GUSTS TO 045 KTS
 04/12Z, WINDS 040 KTS, GUSTS TO 050 KTS
 05/00Z, WINDS 045 KTS, GUSTS TO 055 KTS
 05/12Z, WINDS 050 KTS, GUSTS TO 065 KTS
 06/00Z, WINDS 055 KTS, GUSTS TO 070 KTS
 07/00Z, WINDS 070 KTS, GUSTS TO 085 KTS
 08/00Z, WINDS 080 KTS, GUSTS TO 100 KTS
 09/00Z, WINDS 085 KTS, GUSTS TO 105 KTS

CPA TO:	NM	DTG
KADENA_AB	15	05/03Z
SASEEO	392	05/05Z
TAIPEI	193	08/05Z

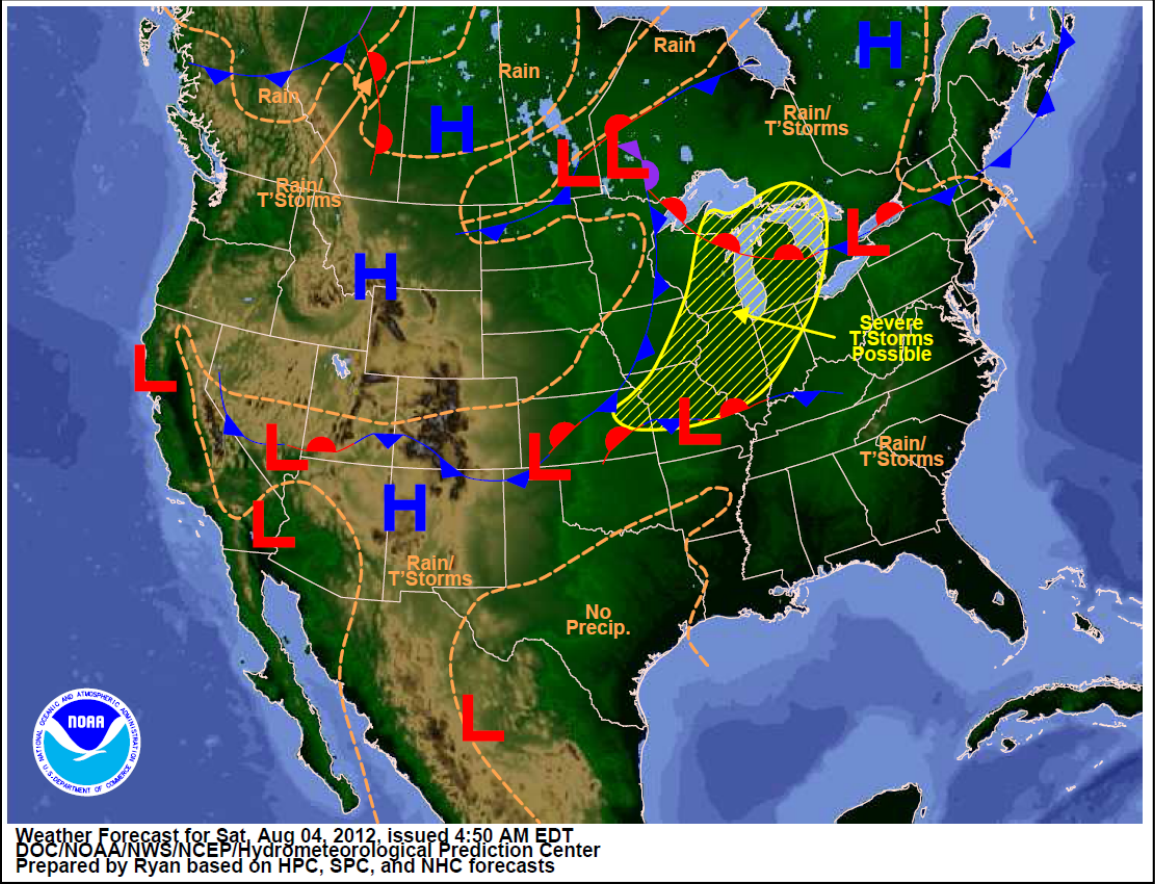
BEARING AND DISTANCE	DIR	DIST (NM)	TAU (HRS)
KADENA_AB	079	33	24
SASEEO	190	396	24
TAIPEI	075	383	24
KADENA_AB	293	127	48
TAIPEI	058	257	48
KADENA_AB	292	200	72
TAIPEI	043	217	72



National Weather Forecast



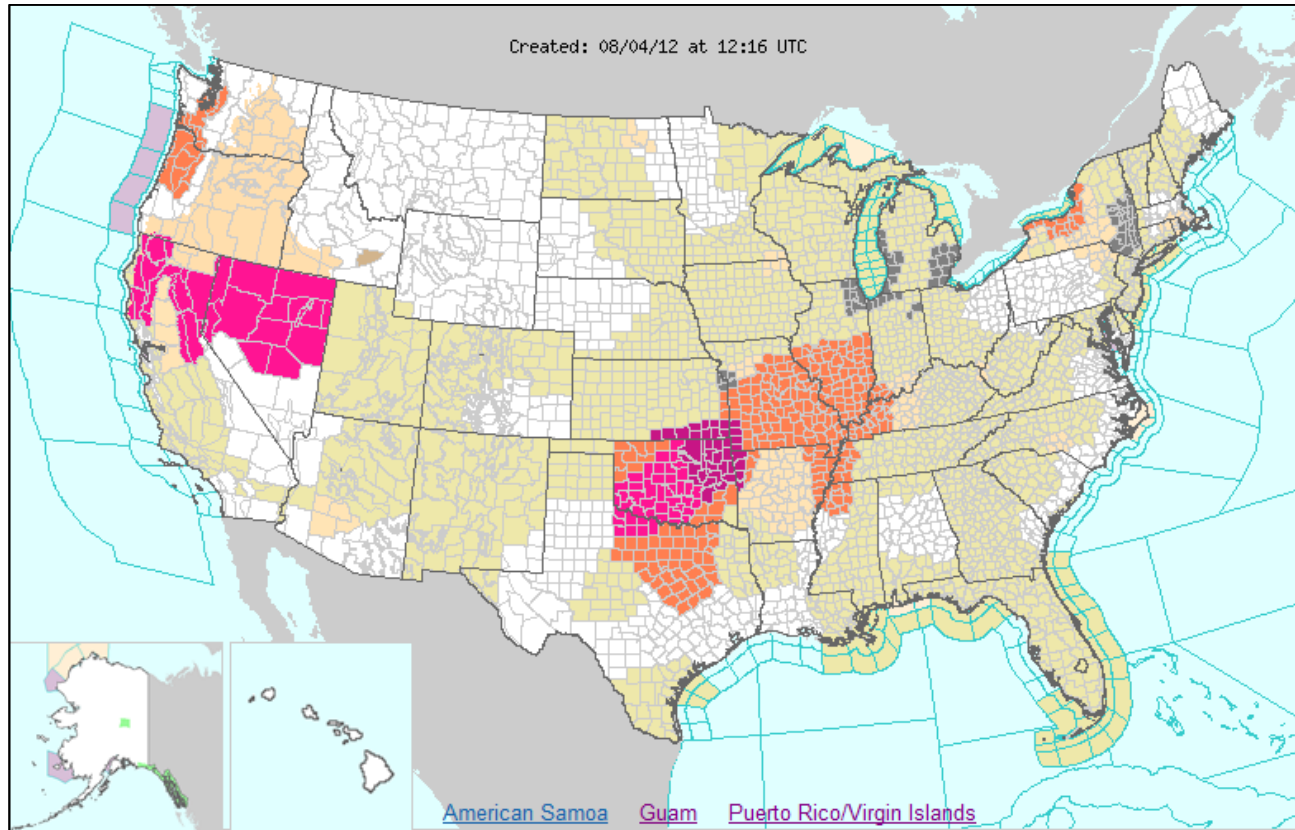
FEMA



Active Watches/Warnings



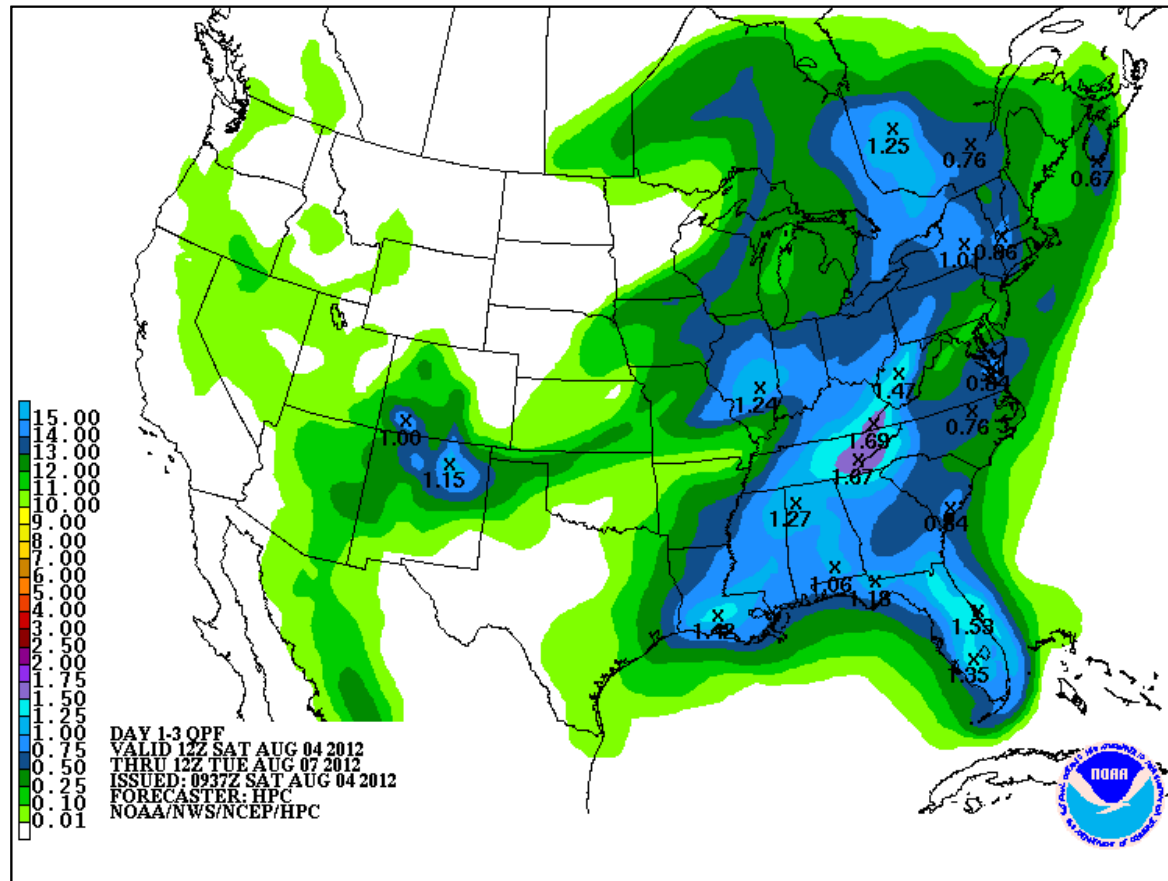
FEMA



Precipitation Forecast 1 - 3 Day



FEMA



River Flood Outlook - 7 Day



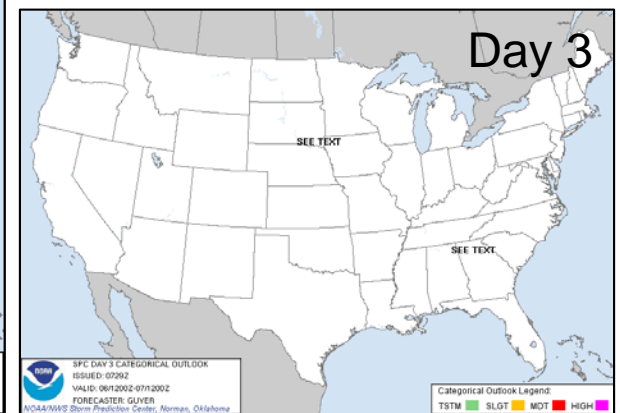
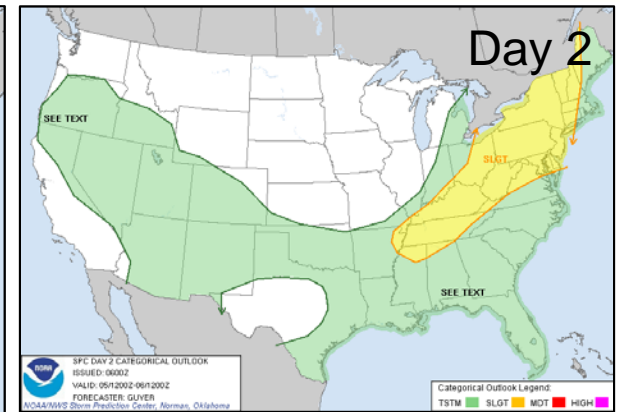
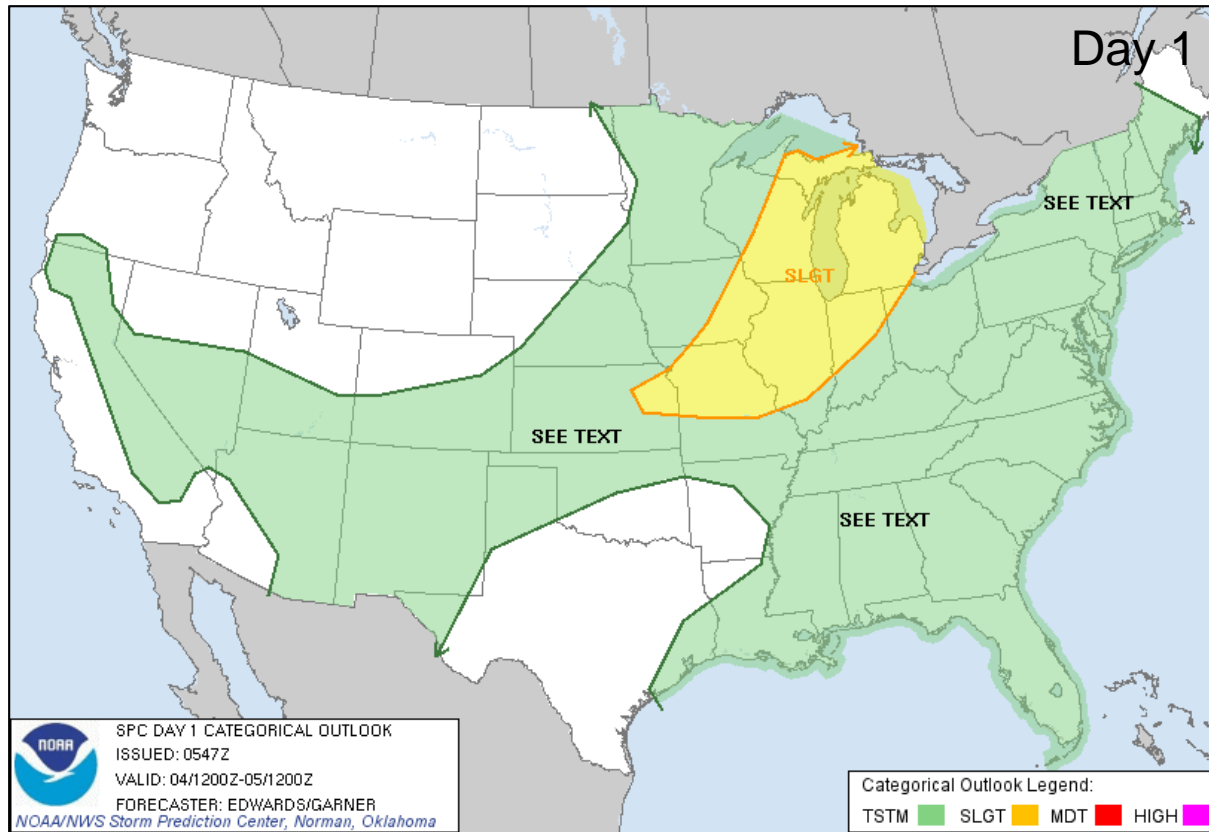
FEMA



Convective Outlook Days 1 - 3



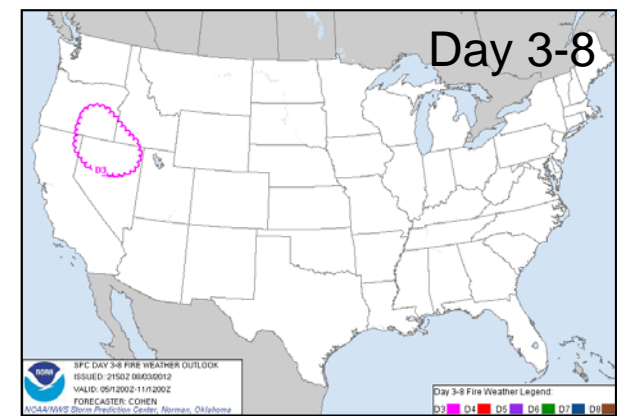
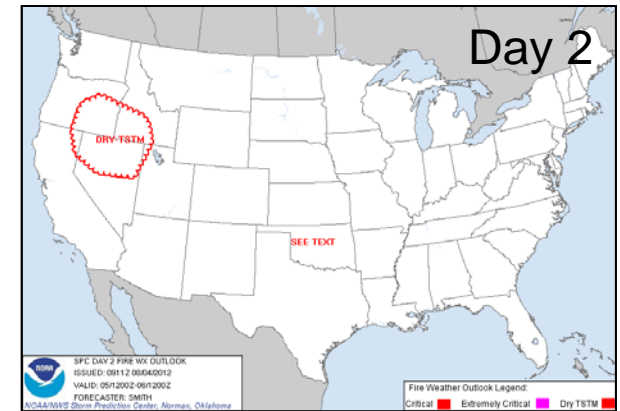
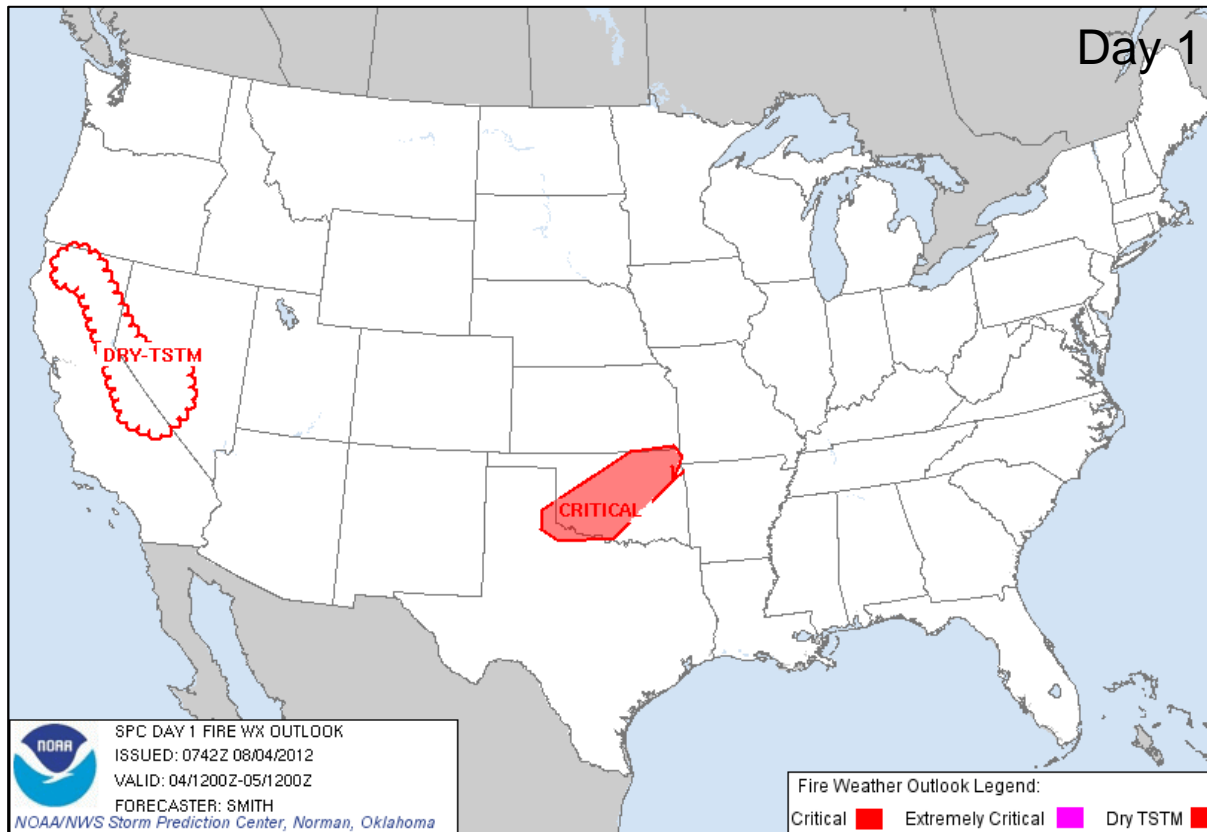
FEMA



Critical Fire Weather Areas Days 1 - 8



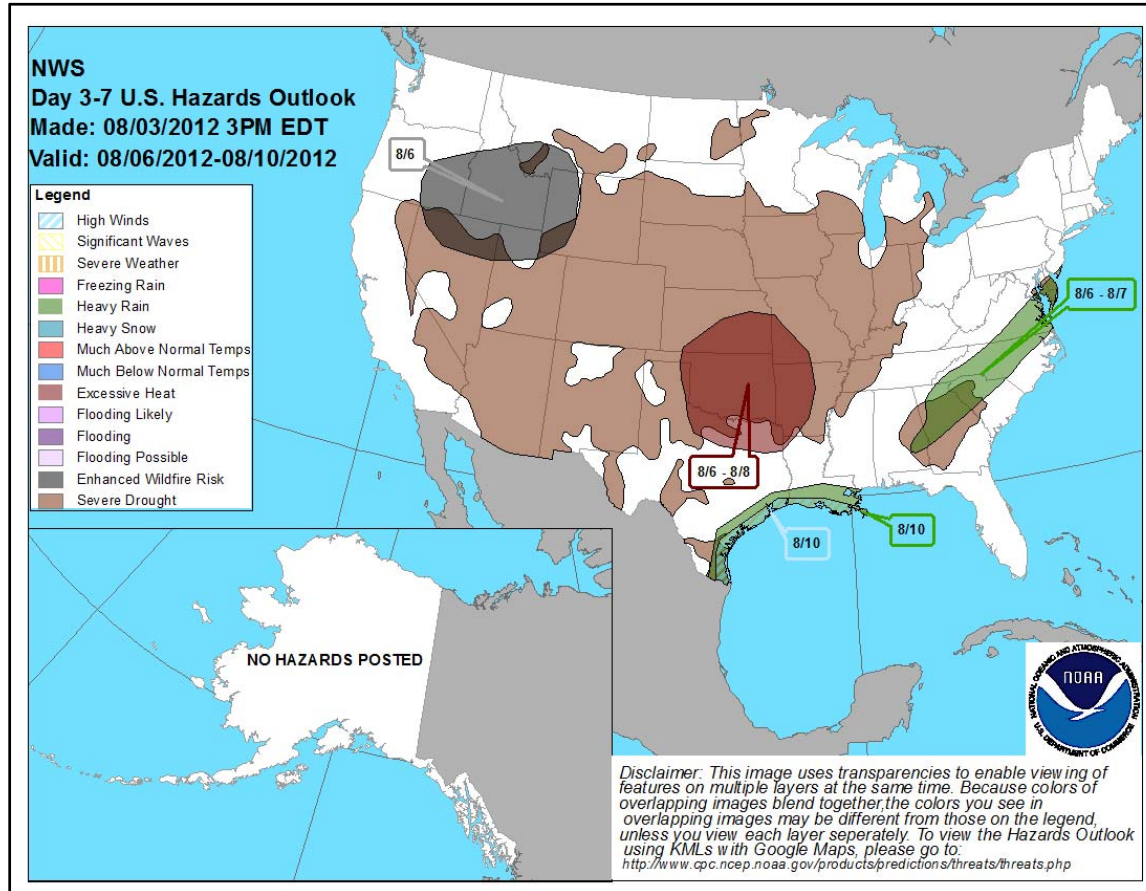
FEMA



Hazard Outlook: August 6-10



FEMA

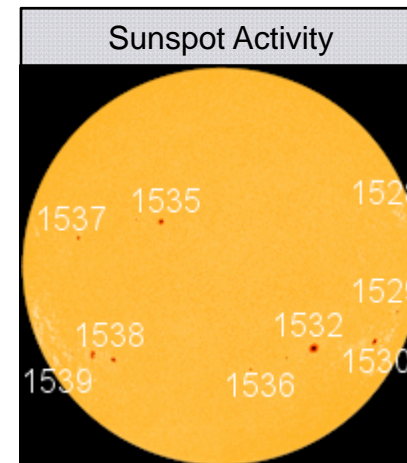
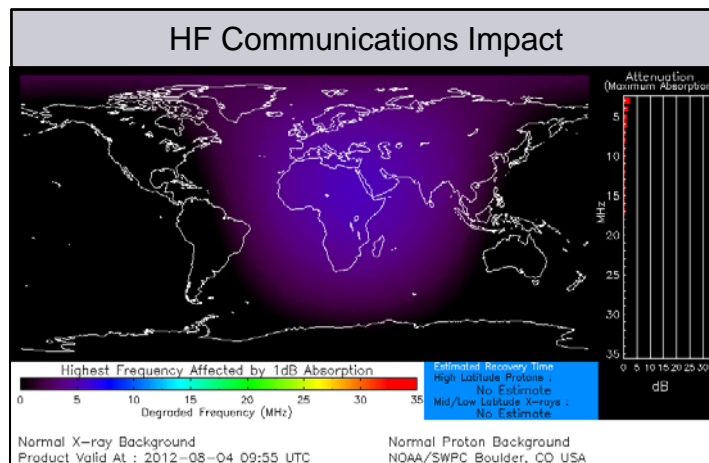


Space Weather

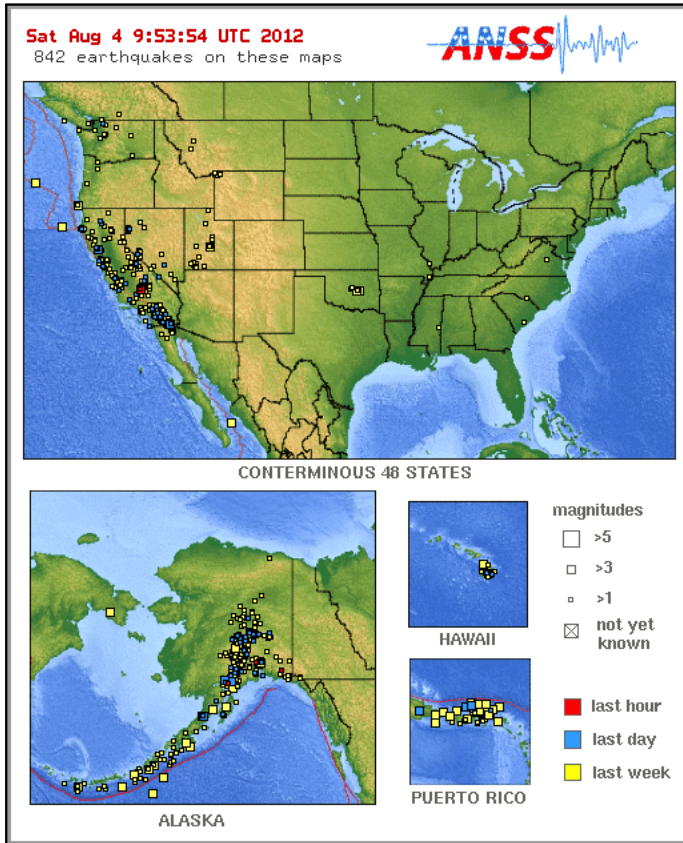


FEMA

NOAA Scales Activity Range 1 (minor) to 5 (extreme)	Past 24 Hours	Current	Next 24 Hours
Space Weather:	None	None	None
• Geomagnetic Storms	None	None	None
• Solar Radiation Storms	None	None	None
• Radio Blackouts	None	None	None



Significant Earthquake Activity – U.S.



No significant activity

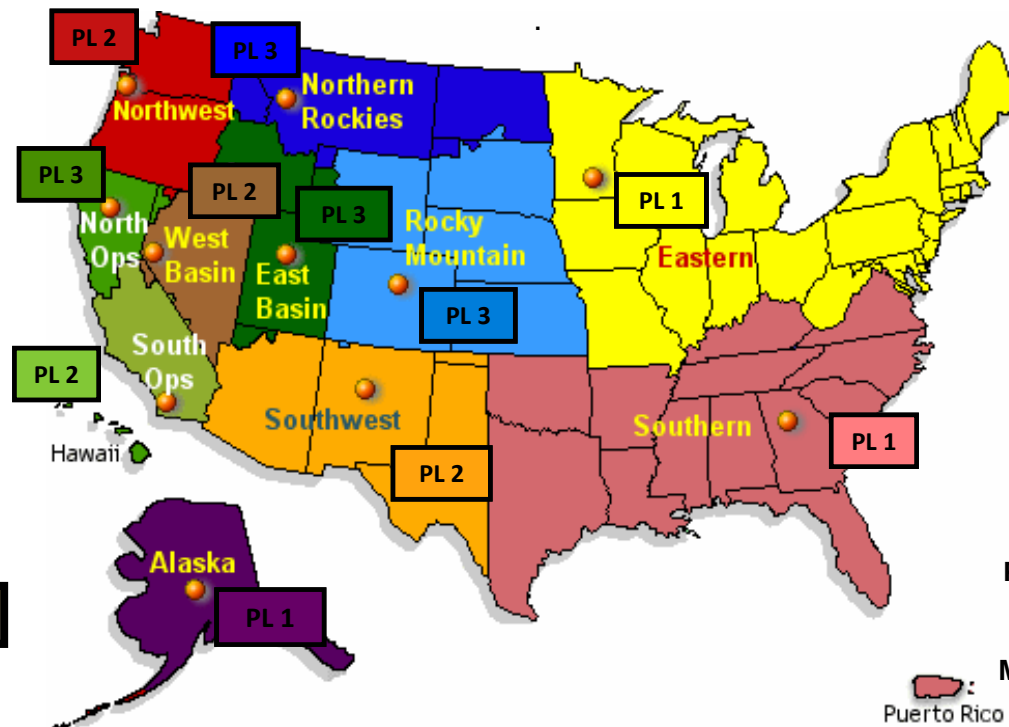
US Wildland Fire Preparedness Levels



FEMA

National Preparedness Level: 3

Two (2) or more Geographic Areas are experiencing wildland or prescribed fire activities requiring a major commitment of National Resources. Additional resources are being ordered and mobilized through NICC. Type 1 and 2 Incident Management Teams are committed in two (2) or more Geographic Areas and crew commitment nationally is at 50%.



As of August 3, 2012

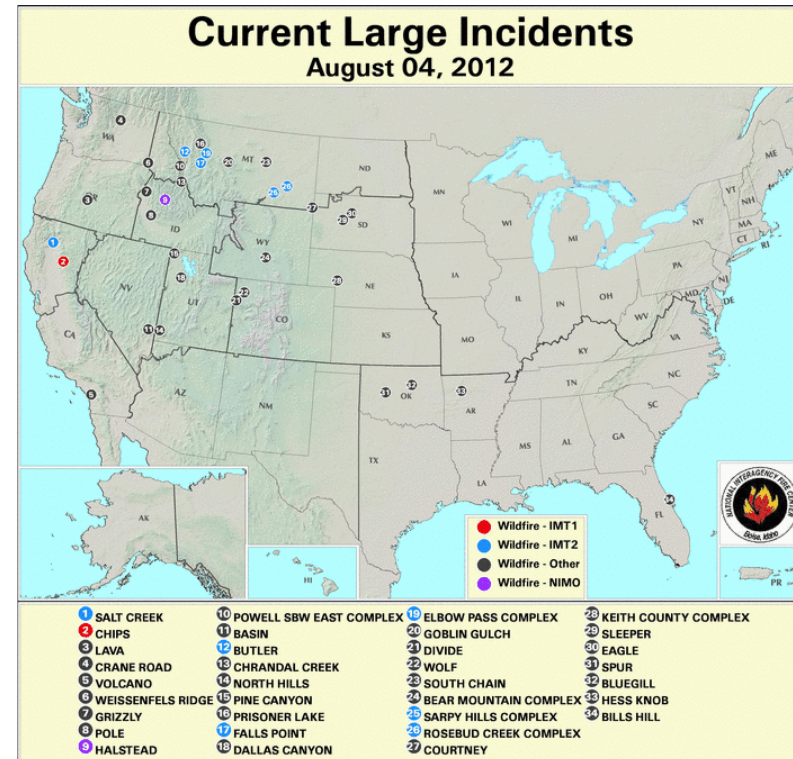
National Fire Activity



FEMA

August 4, 2012:

- National Preparedness Level: 3
- Initial Attack Activity: Light (139)
- New Large Fires: 10
- Large Fires Contained: 4
- Uncontained Large Fires: 40
- NIMOs Committed: 1
- Type 1 IMT(s) Committed: 1
- Type 2 IMT(s) Committed: 6
- States Affected: MT, ID, UT, SD, CA, WY, NE, CO, OR, WA, AR, OK, FL, & NV



Western Wildfire Summary



FEMA

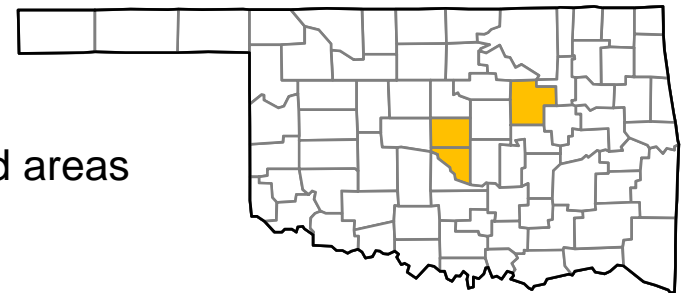
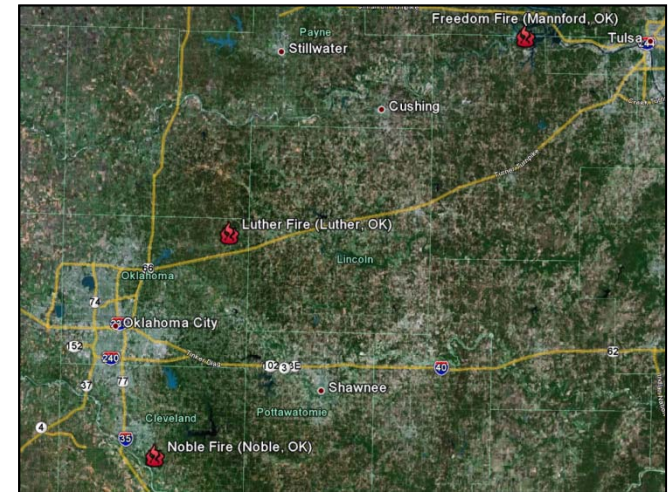
Fire Name (County)	FMAG #	Acres burned	% Contained	Evacuations (Type)	Structures Threatened	Structures Destroyed	Fatalities / Injuries
Montana (2)							
Rosebud Complex (Rosebud County)	Not Requested	131,234 (+51,234)	0%	No	30+ homes	3	0/0
Elbow Pass Complex (Lewis & Clark Co)	Not Requested	15,666 (+8,141)	Not Reported	Yes (Mandatory)	Some	Not reported	0/0
California (1)							
Salt Creek Wildfire (Shasta County) FINAL	Not Requested	900	70% (+52)	No	220	1 outbuilding	0/0
Oklahoma (4)							
Geary Fire (Blaine/Canadian counties)	2998-FM-OK Aug 3, 2012	3,000	0%	Yes	425	2	0/0
Noble Fire (Cleveland County)	Approved August 3, 2012	1,342	0%	Yes	245 homes	45 homes	0/0
Freedom Fire (Creek County)	Approved August 3, 2012	1,000	0%	Yes	125	10	0/0
Luther Fire (Oklahoma County)	Approved August 3, 2012	1,050	0%	Yes	471	2	0/0

Wildfires - Oklahoma



Three FMAGS were approved the evening of August 3, 2012

- Noble Fire: (Cleveland Co.)
 - Located in rural area near Noble (pop. 6,481)
 - 1,342 acres burned; 0% contained
 - 45 structures lost; 245 threatened
- Freedom Fire: (Creek Co.)
 - Located south of Mannford (pop. 3,076)
 - 10 structures lost; 125 threatened
- Luther Fire: (Oklahoma Co.)
 - Located south of Luther (pop. 1,221)
 - Two structures lost; 471 threatened
- A total of 1,337 residents under evacuation from threatened areas
- No fatalities or injuries reported
- Oklahoma State EOC is partially activated to Level II
- FEMA Region VI remains at Watch/Steady State



FMAG Requests and Declarations



FEMA

Action (since last report)	Total	FMAG No. and State
Requests DENIED	0	
Requests APPROVED	3	Oklahoma: Noble Fire, Freedom Fire, Luther Fire
Requests Expected Next 24 Hours	0	None as of 1200 8/3/12

As of August 1, 2012	2012	2011*
FMAGs Approved	28	87
FMAGs Denied	13	27
<i>* Cumulative FMAG figures as of this date in 2011</i>		

OFDC Cadre Member Status



Federal Coordinating Officer

Deployed	Detailed	Available	Not Available	Total
16	1	17	2	36
Total Available	Type 1	Type 2	Type 3	Type 4
20*	3*	11	4	2

* All Type 1 FCOs are available unless deployed to a Level 1 event

Federal Disaster Recovery Coordinator

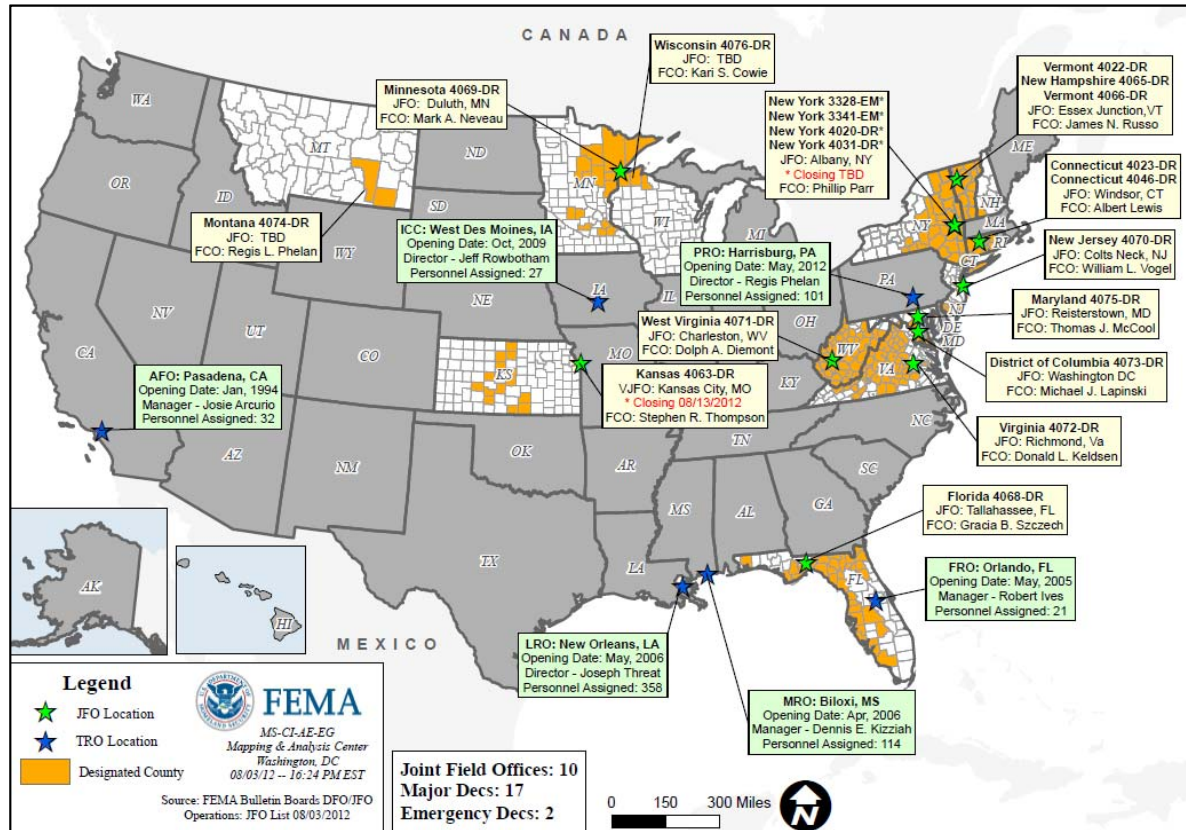
Positions	On Board	Available	Deployed	Pending Hire
10	4	3	1	1

As of: 08/03/12

Open Field Offices as of August 4, 2012



FEMA



Joint Preliminary Damage Assessments



FEMA

Region	State	Event	IA/PA	Number of Counties, Tribes & Cities			Begin/End
				Requested	Ongoing	Complete	
II	NY	Severe Storms/Tornadoes July 26	IA	2	0	2	Began: 7/27 Ended: 8/2
V	OH	Severe Storms/High Winds June 29 – July 2	PA	38	5	33	Began: 7/30 Ended: TBD
V	MN	Severe Storms/High Winds July 2 – July 4	PA	5 counties; 2 tribes	5 counties; 2 tribes	0	Began: 7/25 End: TBD
VII	NE	Wildfires July 20 – July 30	IA	1	0	0	Begin: 8/13 End: TBD
			PA	3	0	0	Begin: 8/13 End: TBD
X	WA	Severe Storms July 13	IA	2	0	2	Began: 8/1 End: 8/2
			PA	5	0	0	Begin: 8/7 Ended: 8/10

MCOV Fleet / Deployment Status



FEMA

MCOV FLEET STATUS						MCOV DISASTER SUPPORT DEPLOYMENTS					
Location	Units Assigned	Available FMC	Deployed Committed	PMC	NMC	DR-State	OPCON	En Route	Unit Prep	Open Request	Notes:
DC Atlanta	21	16	4		1	R4-FL-4068	4				
DC Cumberland	10	10									
DC Ft Worth	15	15									
DC Moffett	6	6									
Holliston, MA	1	1									
Denver, CO	2	2									
Bothell, WA	2	2									
TOTAL	57	52	4	0	1	TOTAL	4	0	0	0	
Included in above totals, units en route for turn-in.											

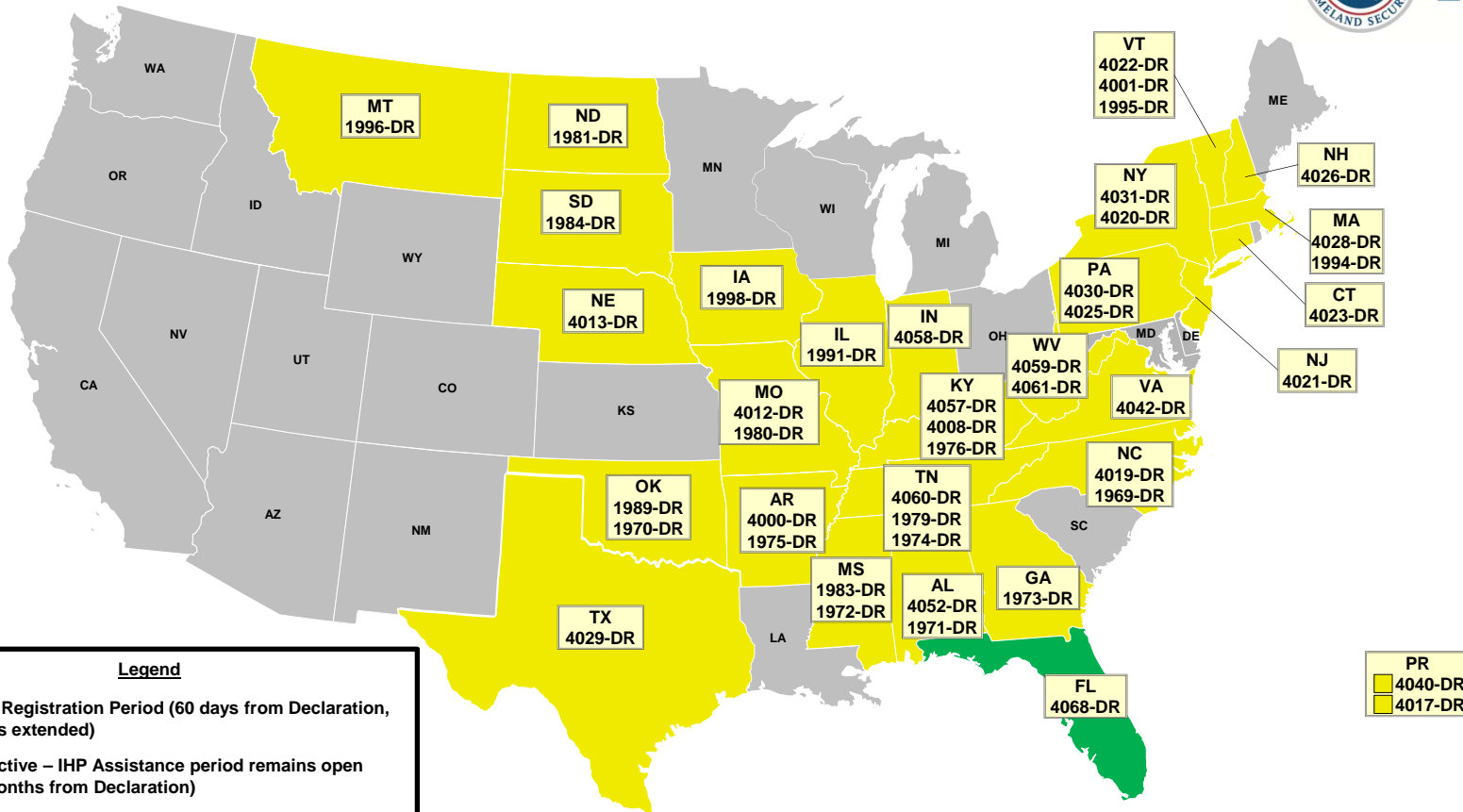
Fully Mission Capable	56
Partially Mission Capable	0
Non-Mission Capable	1
Total Not Deployed	53

Data as of: 08/02/12 @ 1500

Active IA Disasters



FEMA



# of DRs	Legend
1	Open Registration Period (60 days from Declaration, unless extended)
44	IHP Active – IHP Assistance period remains open (18 Months from Declaration)
0	IHP Closing Within 60 Days

Data as of: 08/02/12 @ 1500

IA Registration Statistics



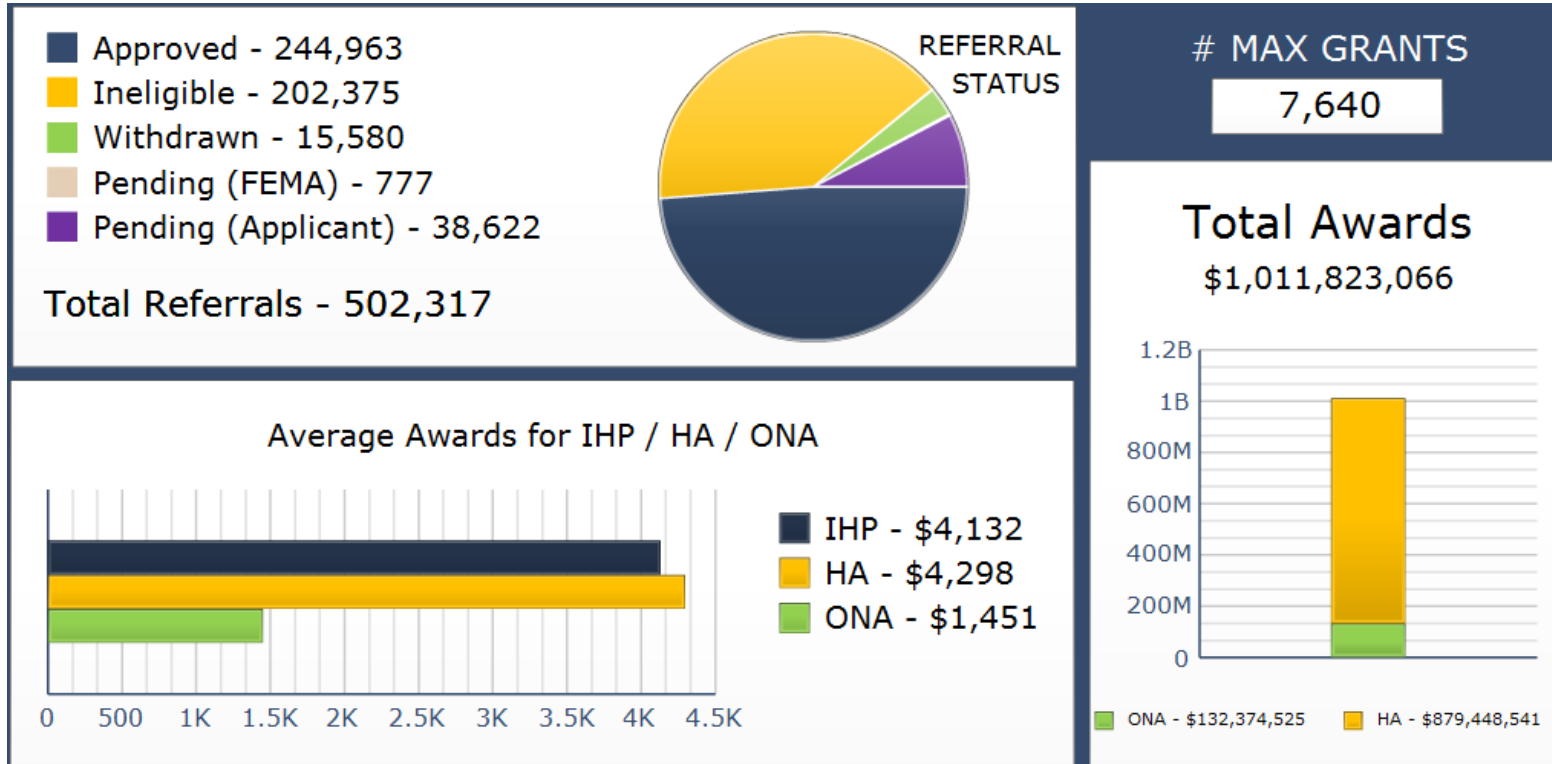
Cumulative as of August 2, 2012 @ 1500					
DR # - State	Registrations	Approved Applicants	Total HA Approved	Total ONA Approved	Total IHP Approved
4068 – FL	13,213	4,674	\$15,879,618	\$2,116,881	\$17,996,499
Totals	13,213	4,674	\$15,879,618	\$2,116,881	\$17,996,499
24 hour change	+237	+96	+\$249,395	+\$50,806	+\$300,201

NPSC Call Data for August 1, 2012	
Total NPSC Calls Answered (Helpline + Registration Intake)	1,414
Average time to answer call	11 seconds

IHP Referral Status & Awards



FEMA



Data includes the 45 IHP Active DRs
 # Max Grants = Applicants awarded maximum IHP (\$30,200 as of FY2012)

Data as of: 08/02/12 @ 1500

Housing Inspection Statistics



Data as of August 2, 2012 @ 1600					
DR # - State	Inspectors	Inspections Assigned	Inspections Completed	Inspection % Complete	Turnaround Time (Days)
4068 – FL	26	10,762	10,467	97.3%	1.8
TOTAL	26	10,762	10,467	97.3%	1.8
24 hour change	+1	+172	+222	+0.5%	-0.0

* Only displaying inspectors for DRs that currently have open registration periods

IMAT Status



FEMA

National Teams					
Team	Status	Team	Status	Team	Status
BLUE (East)		WHITE (Central)		RED (West)	
Regional Teams					
Team	Status	Team	Status	Team	Status
Region I	RI (EX)	Region V		Region IX-1	
Region II	NY	Region VI-1		Region IX-2	
Region III	VA	Region VI-2		Region X	
Region IV-1		Region VII			
Region IV-2	FL	Region VIII			

= Available/Mission Capable
 = Assigned/Deployed
 = Available/Partially Mission Capable
 = Out-of-Service

Urban Search & Rescue



FEMA

INCIDENT SUPPORT TEAMS (Red-White-Blue) – Monthly On Call Rotation											
JAN	FEB	MAR	APR	MAY	JUN	JUL	AUG	SEP	OCT	NOV	DEC
WEST				CENTRAL				EAST			
Team	Status	Team	Status	Team	Status	Team	Status	Team	Status	Team	Status
CA-TF1	Available	AZ-TF1	Available	FL-TF1	Available						
CA-TF2	Available	CO-TF1	Available	FL-TF2	Available						
CA-TF3	Available	IN-TF1	Available	MA-TF1	Available						
CA-TF4	Available	MO-TF1	Available	MD-TF1	Available						
CA-TF5	Available	NE-TF1	Available	NY-TF1	Available						
CA-TF6	Available	NM-TF1	Available	PA-TF1	Conditionally Available						
CA-TF7	Available	NV-TF1	Conditionally Available	VA-TF1	Available						
CA-TF8	Available	TN-TF1	Conditionally Available	VA-TF2	Available						
WA-TF1	Available	TX-TF1	Available	OH-TF1	Available						
		UT-TF1	Available								

= Available/Mission Capable
 = Assigned/Deployed
 = Available/Partially Mission Capable
 = Out-of-Service

RRCC / Regional Watch Center Status



FEMA

Region	RRCC	Regional Watch Center
I	Watch/Steady State	Maynard MOC (24/7)
II	Watch/Steady State	24/7
III	Watch/Steady State	24/7
IV	Watch/Steady State	24/7
V	Watch/Steady State	24/7
VI	Watch/Steady State	Denton MOC (24/7)
VII	Level III	24/7
VIII	Watch/Steady State	Denver MOC (24/7)
IX	Watch/Steady State	24/7
X	Level III	Bothell MOC (24/7)

National Team Status



Team/Status	Current Location	Remarks
National Watch Center	Washington, DC	Watch/Steady State
NRCC	Washington, DC	Not Activated
HLT	Miami, FL	Activated
DEST	Washington, DC	Not Activated
Mission Capable	Partially Mission Capable	Not Mission Capable



FEMA

FEMA's mission is to support our citizens and first responders to ensure that as a nation we work together to build, sustain, and improve our capability to prepare for, protect against, respond to, recover from, and mitigate all hazards.