



FEMA

Daily Operations Briefing

August 2, 2012

As of 8:30 a.m. EDT

Significant Activity: August 1-2



FEMA

Significant Events: None

Tropical Activity:

- Atlantic - Tropical Depression Five
- Eastern Pacific – No tropical cyclone activity expected
- Central Pacific – No tropical cyclones are expected through Friday evening
- Western Pacific – No tropical activity expected to affect US territories

Significant Weather:

- Severe thunderstorms possible – Northern Plains
- Above average temperatures continue – Southern Plains
- Critical Fire Weather Areas: ID, MT & WY
- Red Flag Warnings: ID, MT & WY
- Space Weather: No space weather storms observed or predicted

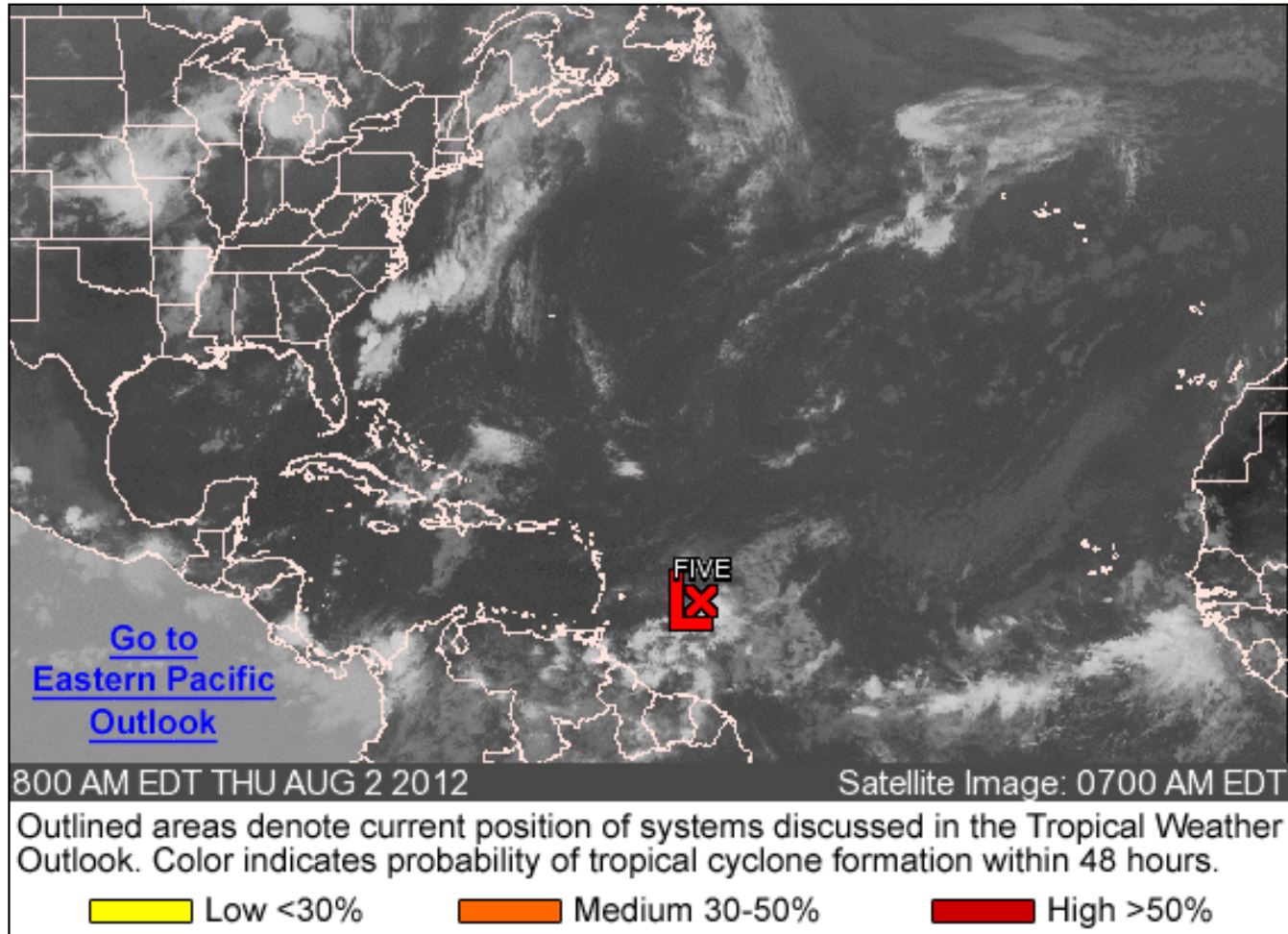
Earthquake Activity: No significant activity

Disaster Declaration Activity: Amendment #1 to FEMA-4071-DR-WV

Atlantic - Tropical Outlook



FEMA



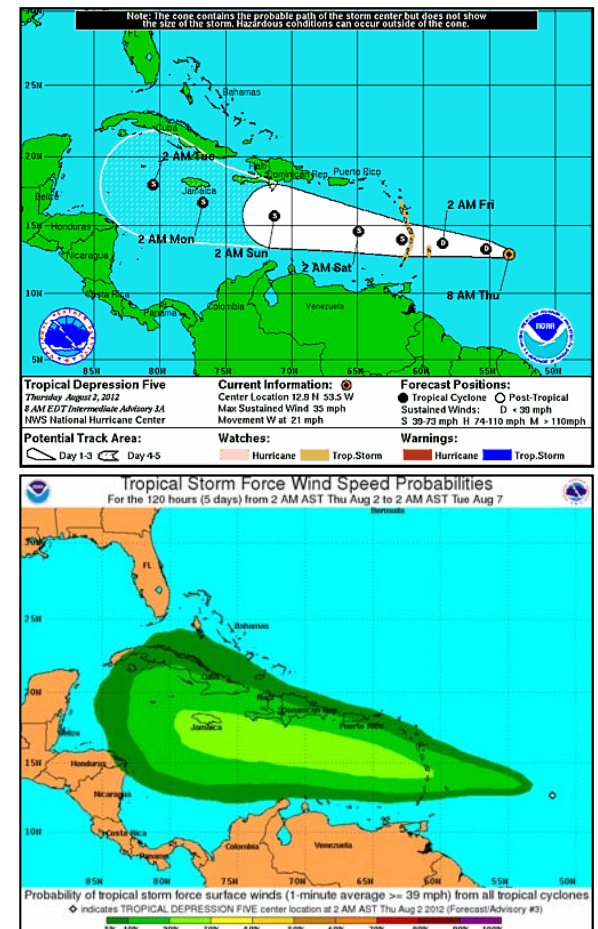


FEMA

Atlantic – Tropical Depression #5

As of 8:00 a.m. EDT (Advisory # 3A)

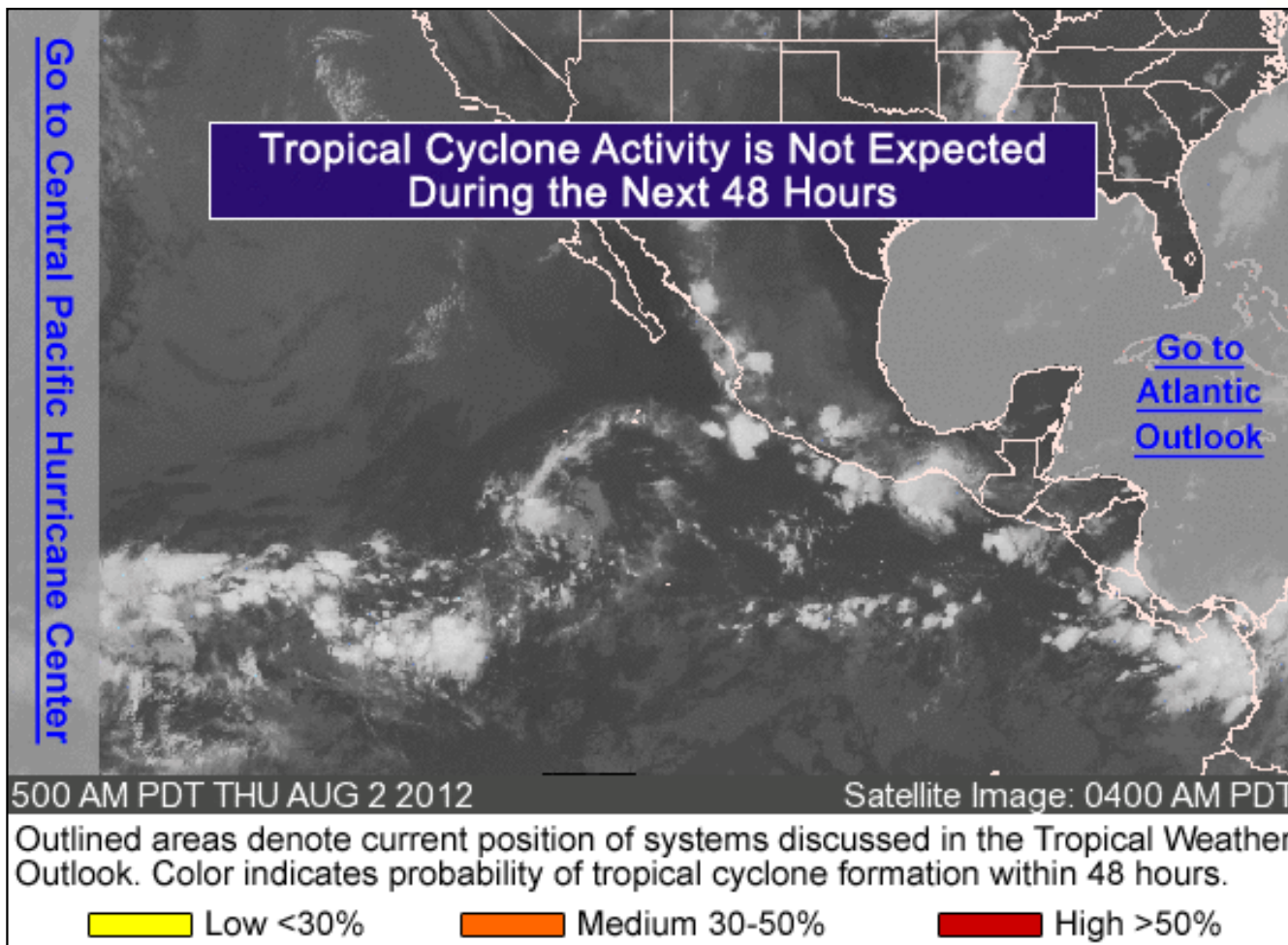
- Located 505 miles E of the Windward Islands, moving W at 21 mph
- A westward or west-northwestward motion at about the same forward speed is expected during the next couple of days
- The center should be near the Windward Islands on Friday
- Maximum sustained winds are near 35 mph
- No significant change in intensity expected today, some strengthening is possible thereafter
- Satellite pictures indicate it has not become better organized
- AF Hurricane Hunter scheduled to investigate today
- A Tropical Storm Watch is in effect for Barbados, St. Vincent and the Grenadines, and Dominica, St. Lucia, Martinique and Guadeloupe



Eastern Pacific -Tropical Outlook



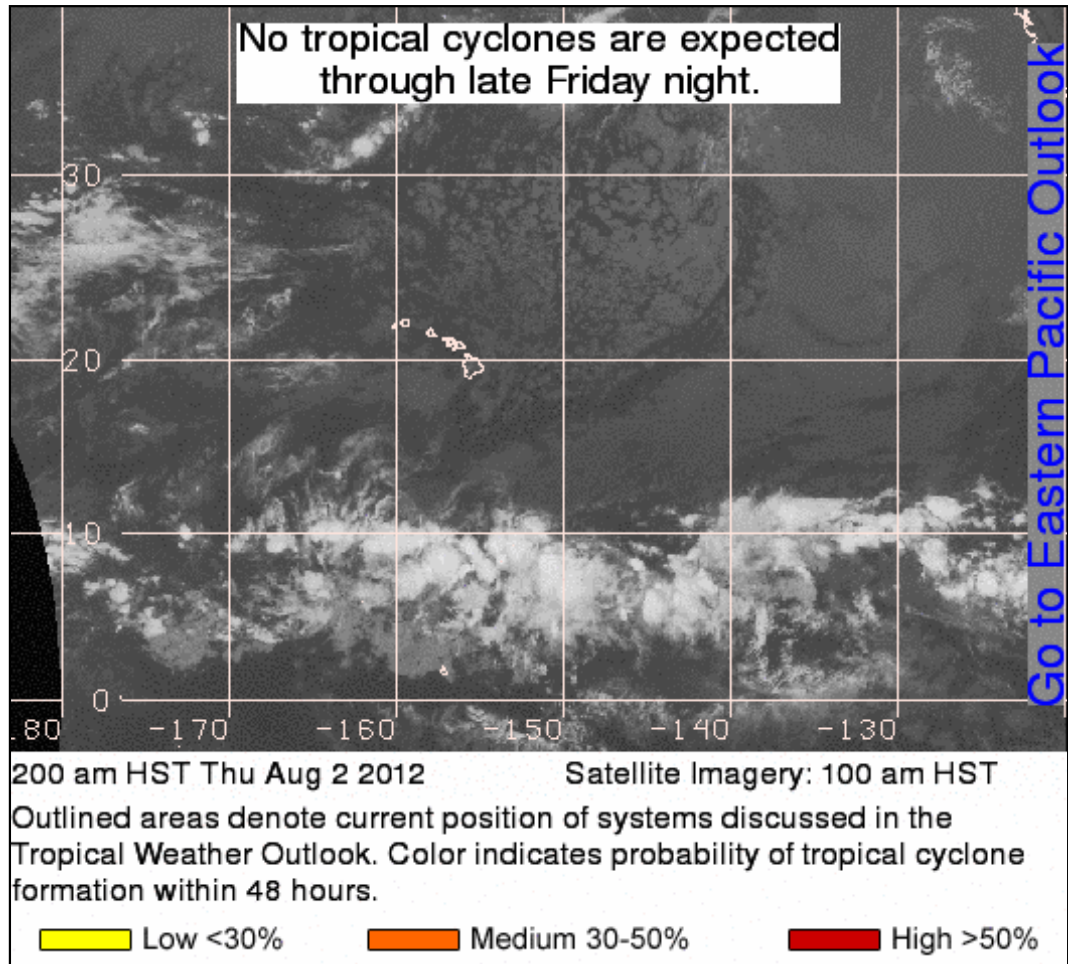
FEMA



Central Pacific - Tropical Outlook



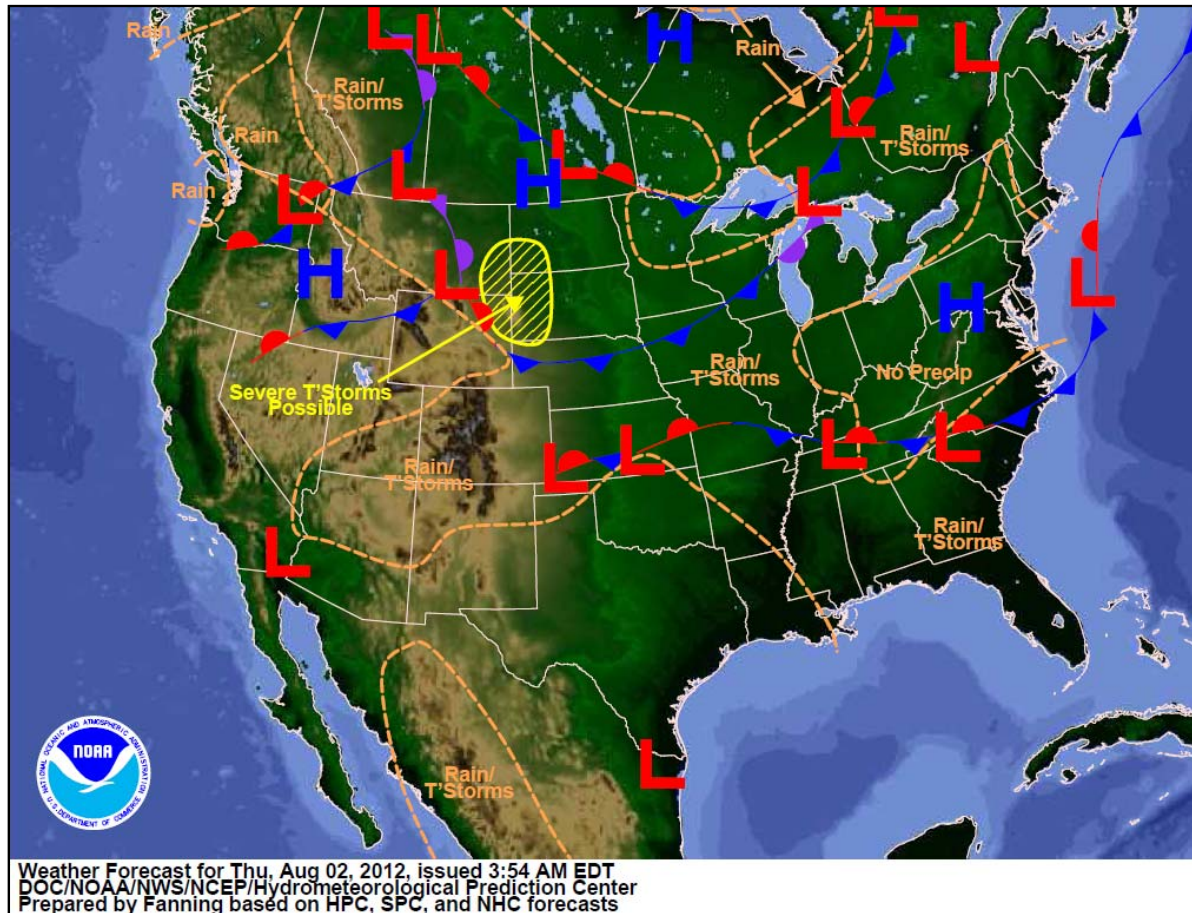
FEMA



National Weather Forecast



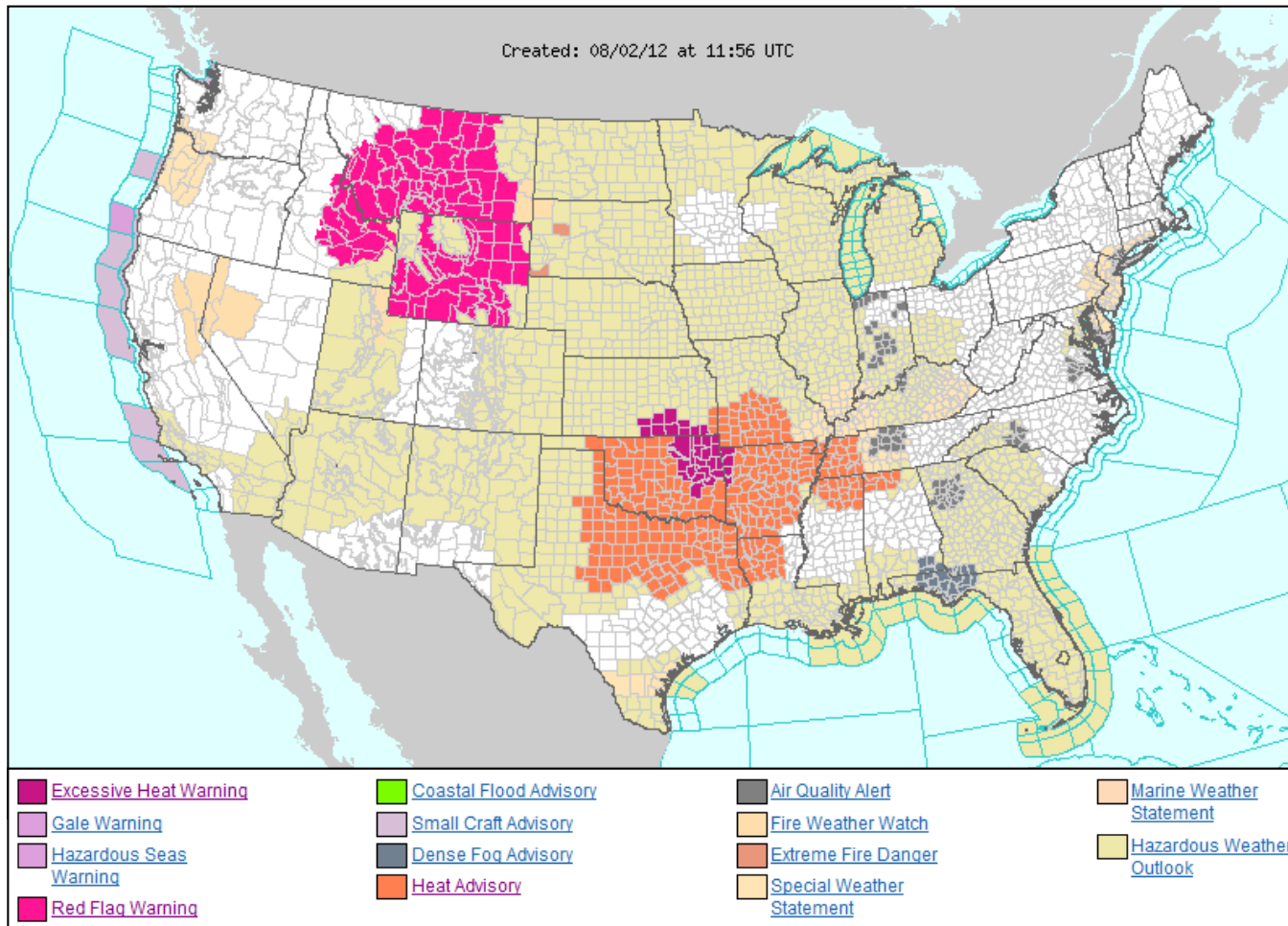
FEMA



Active Watches/Warnings



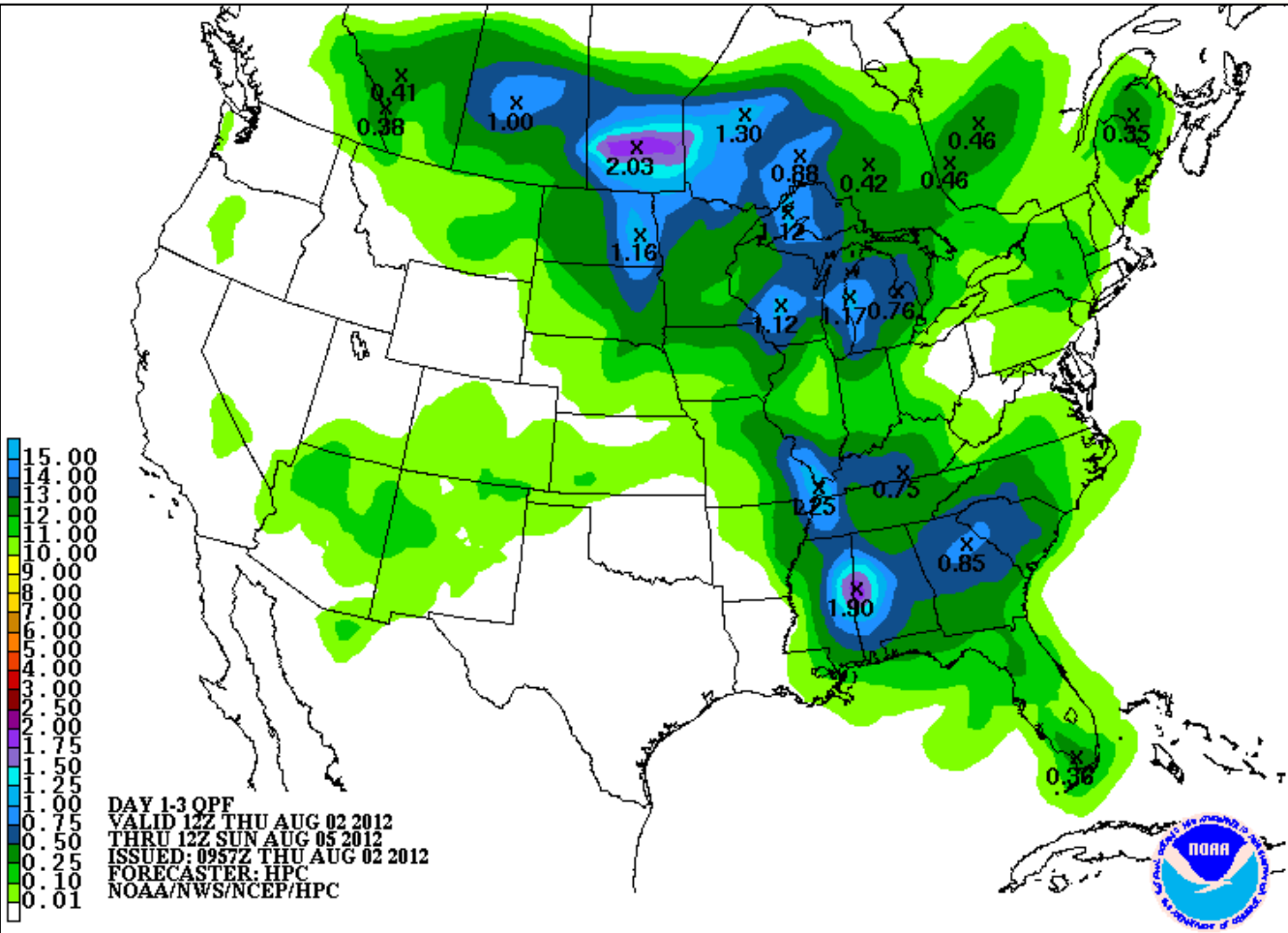
FEMA



Precipitation Forecast 1 - 3 Day



FEMA



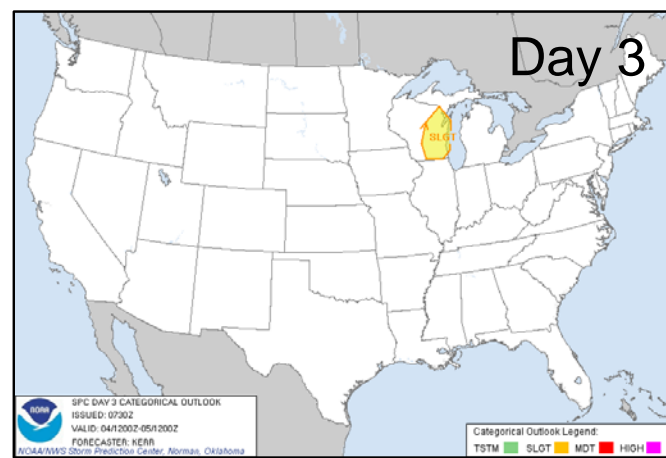
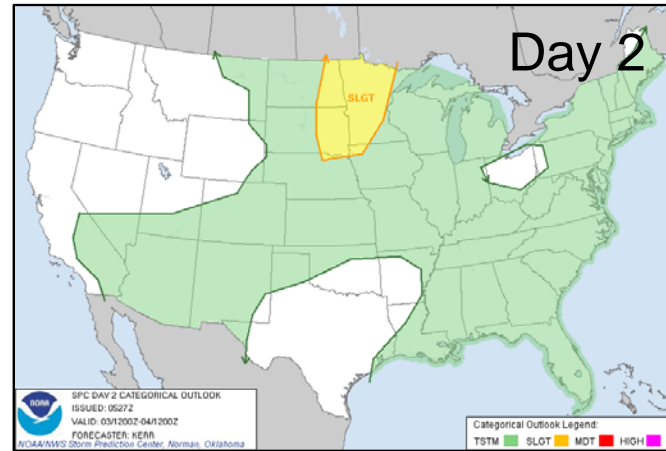
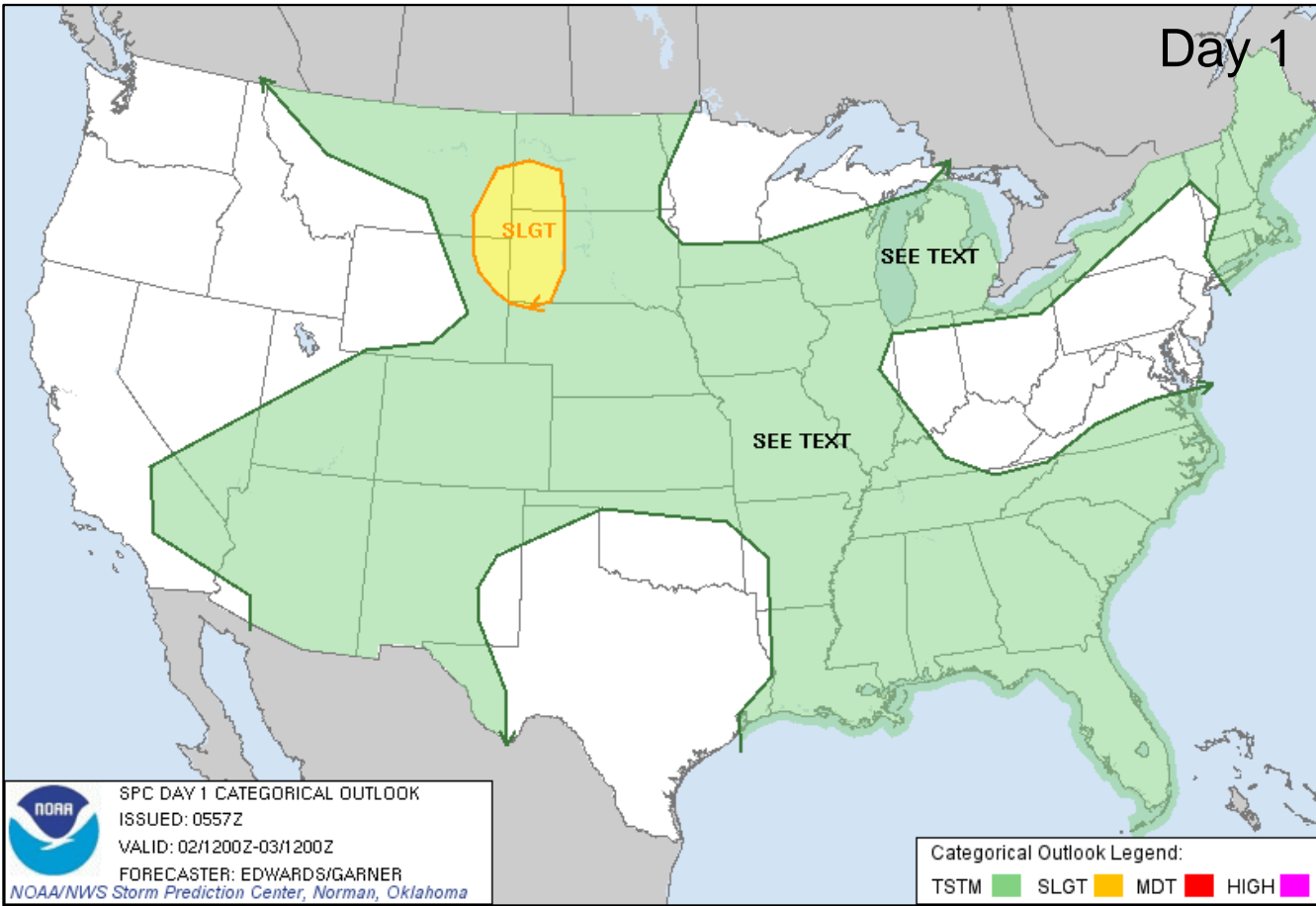
River Flood Outlook - 7 Day



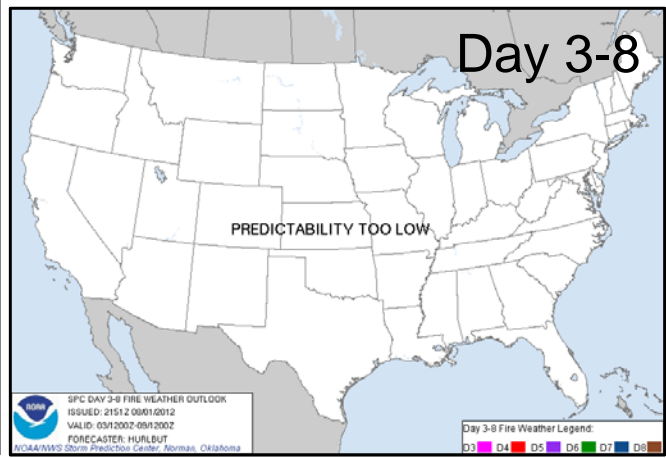
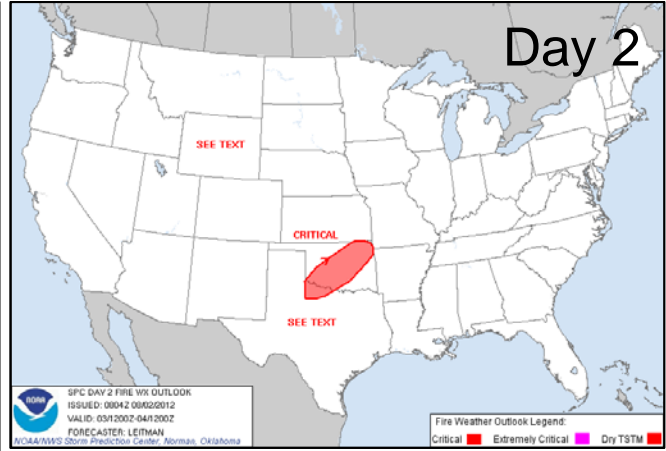
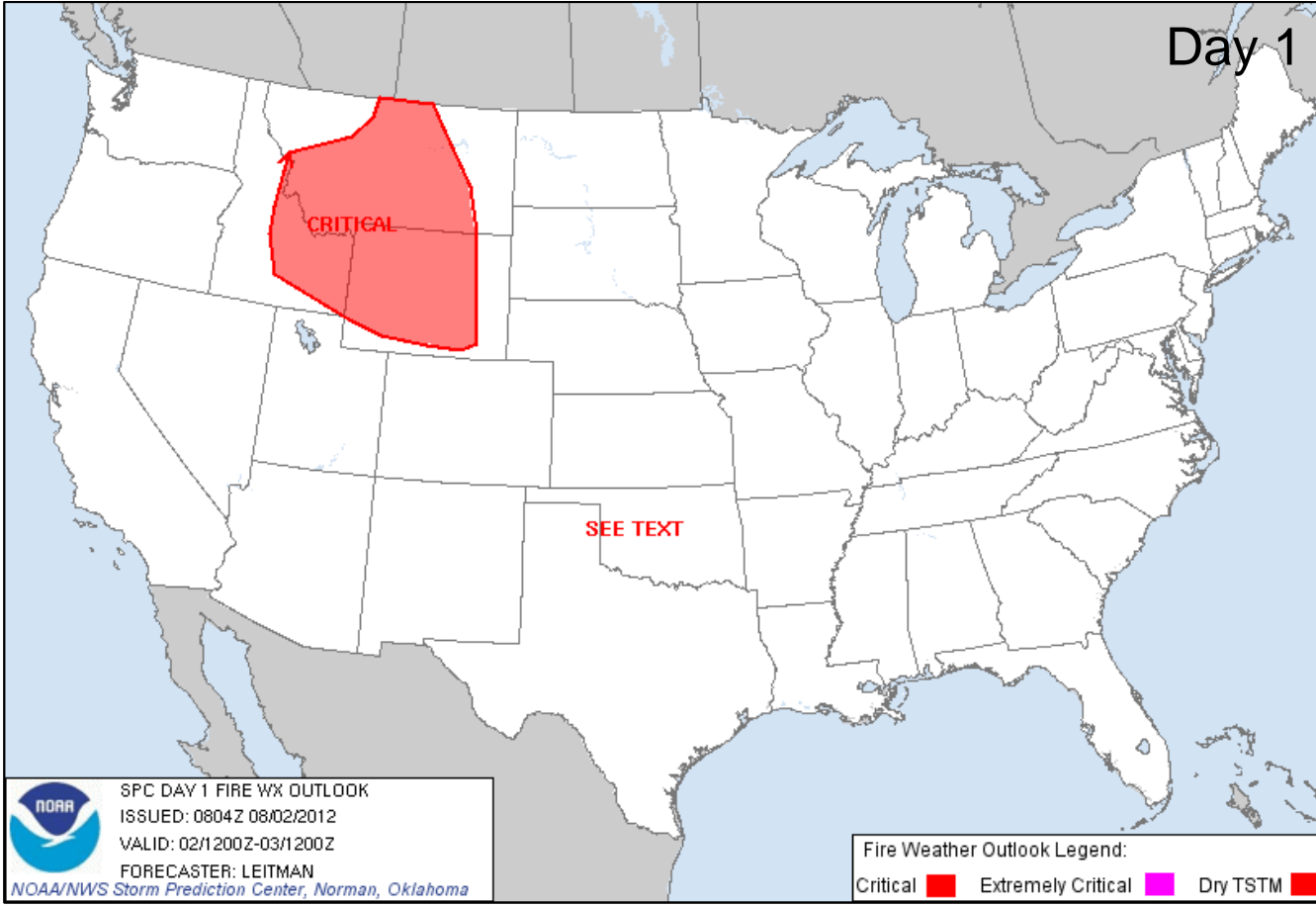
FEMA



Convective Outlook Days 1 - 3



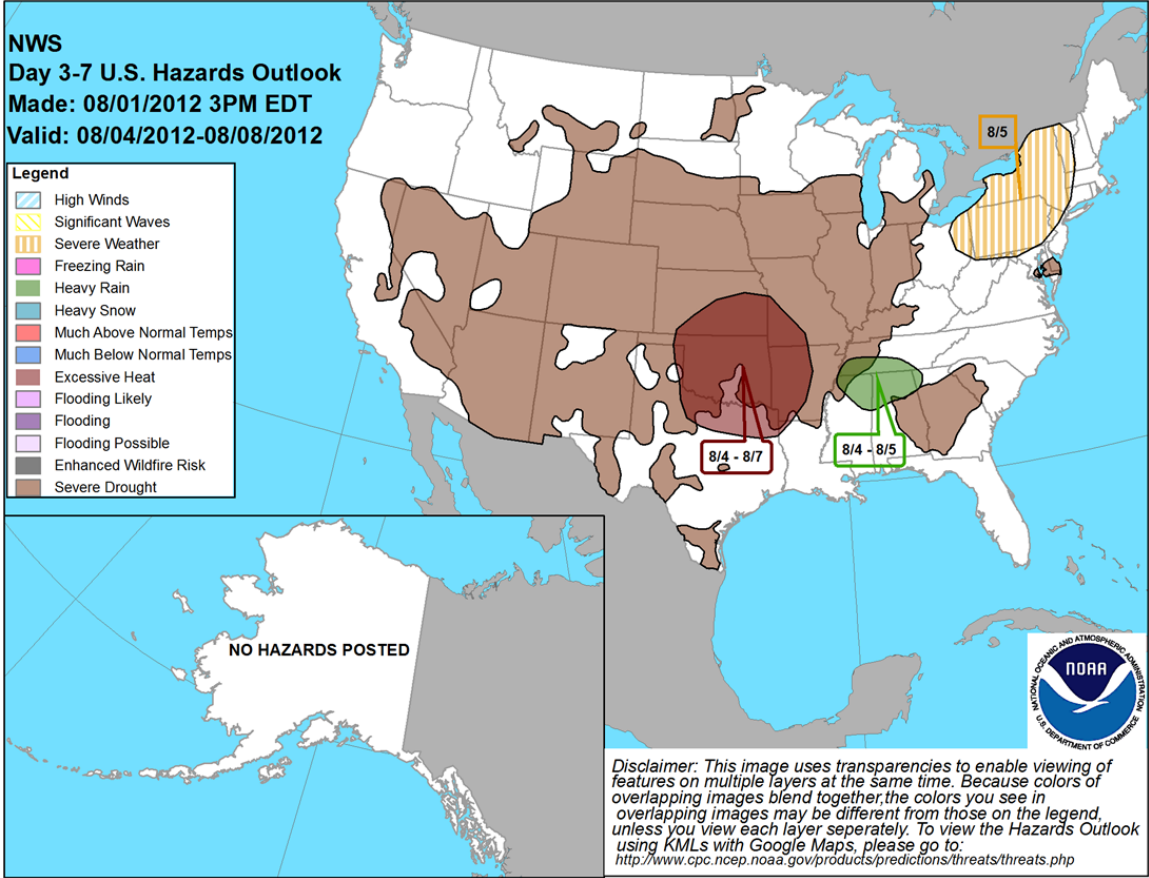
Critical Fire Weather Areas Days 1 - 8



Hazard Outlook: August 4-8



FEMA

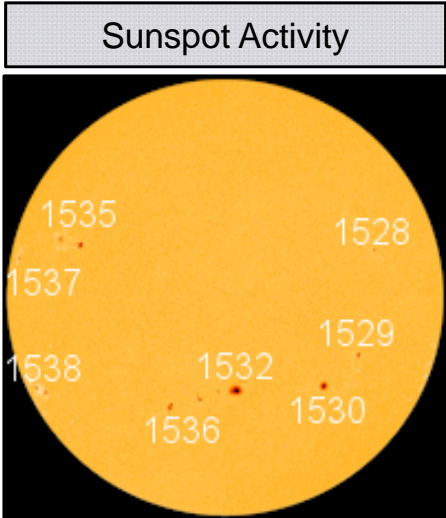
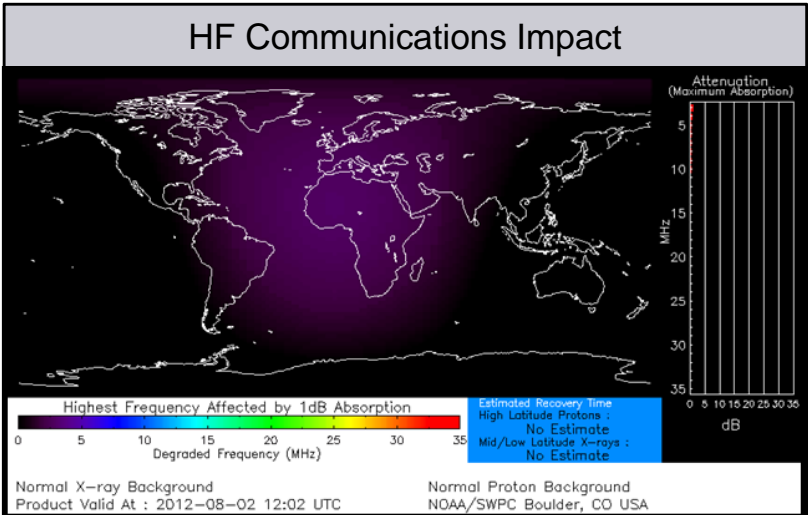


Space Weather



FEMA

NOAA Scales Activity Range 1 (minor) to 5 (extreme)	Past 24 Hours	Current	Next 24 Hours
• Geomagnetic Storms	None	None	None
• Solar Radiation Storms	None	None	None
• Radio Blackouts	None	None	None
• Space Weather	None	None	None

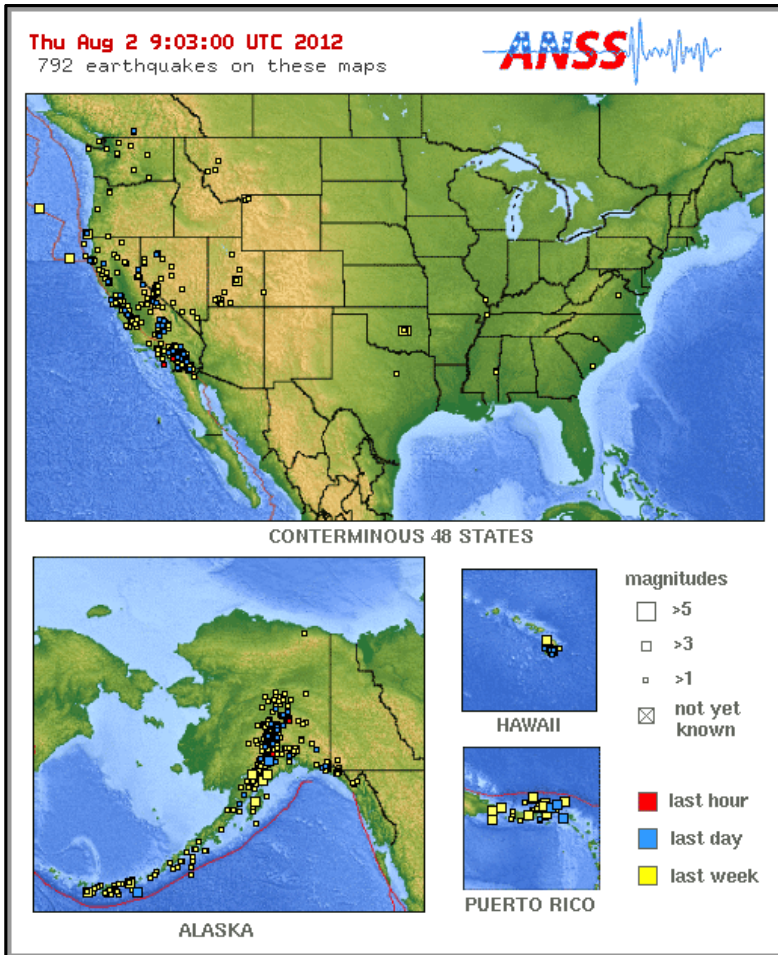




FEMA

Significant Earthquake Activity – U.S.

No significant activity



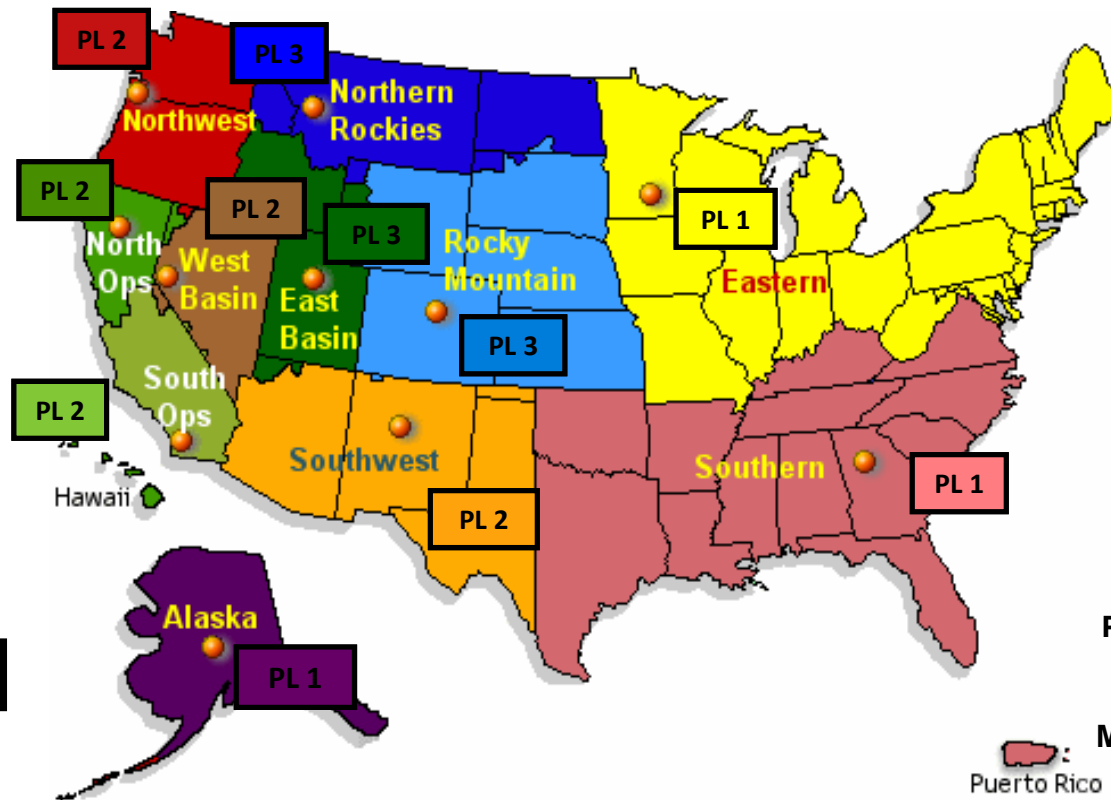
US Wildland Fire Preparedness Levels



FEMA

National Preparedness Level: 2

Several Geographic Areas are experiencing high to extreme fire danger. Wild land fire activity is increasing and large fires are occurring in one or more Geographic Areas. Minimal mobilization of resources from other Geographic Areas is occurring. There is moderate commitment of national resources with the potential to mobilize additional resources from other Geographic Areas.



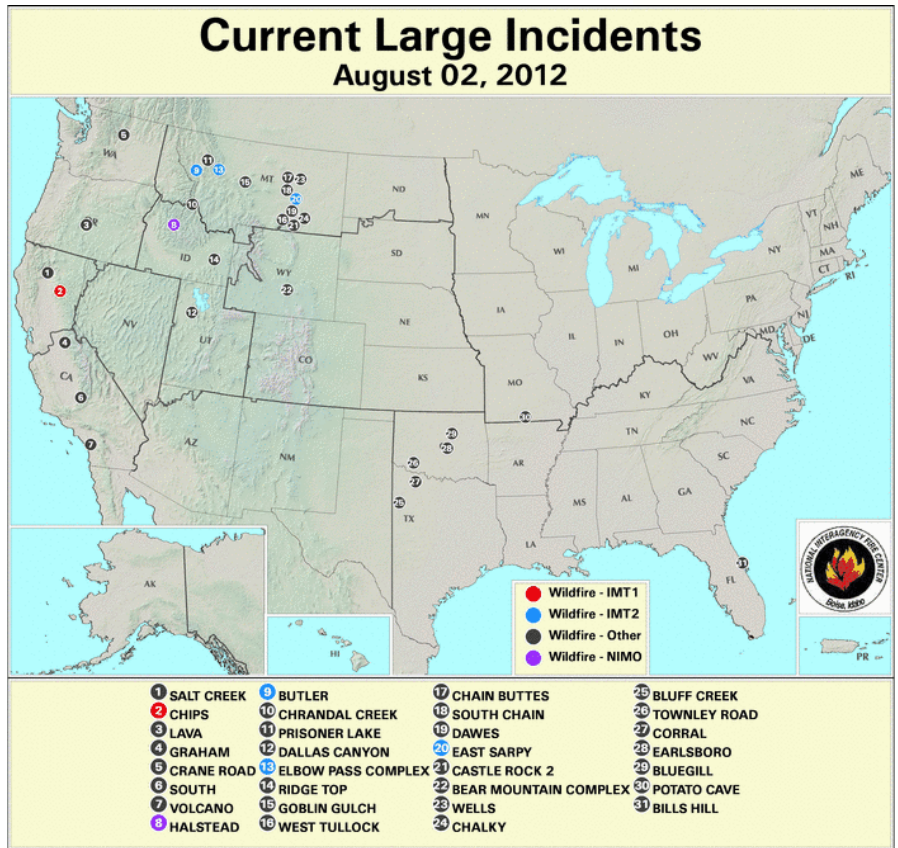
As of August 2, 2012



National Fire Activity

August 2, 2012:

- National Preparedness Level: 2
- Initial Attack Activity: Light (193)
- New Large Fires: 10
- Large Fires Contained: 5
- Uncontained Large Fires: 29
- NIMOs Committed: 0
- Type 1 IMT(s) Committed: 1
- Type 2 IMT(s) Committed: 5
- States Affected: MT, ID, UT, CA, WY, OR, WA, OK, TX, FL & MO



Western Wildfire Summary



FEMA

Fire Name (County)	FMAG #	Acres burned	% Contained	Evacuations (Type)	Structures Threatened	Structures Destroyed	Fatalities / Injuries
Montana (1)							
Elbow Pass Complex (Lewis & Clark Co)	Not Requested	7,525	Unknown	Yes (Mandatory)	Some	Not reported	0/0
California (1)							
Salt Creek Wildfire (Shasta County)	Not Requested	500	20%	Yes	220	1 outbuilding	0/0

Salt Creek Fire, CA



FEMA

Fire Name	Location	Acres burned	% Contained	Est. Full Containment	FMAG	Structures Lost / Threatened	Fatalities / Injuries
Salt Creek	Shasta County, CA	500	20	Unknown	Not requested	1 / 220	0 / 0

- Located 6 miles south of Lakehead (pop. 461), in northern CA
- Evacuations for approximately 200 rural homes over a large area
- One ARC shelter open overnight with 5 occupants
- 176 total personnel supporting fire fight; Type 2 IMT ordered
- Two high tension power lines lost; several remain threatened
- 227 local customers are without power
- The State EOC and FEMA Region IX remain at normal operations
- No requests for FEMA assistance; none are anticipated.



Disaster Requests & Declarations



FEMA

Declaration Requests in Process		Requests APPROVED (since last report)	Requests DENIED (since last report)
3	Date Requested	0	0
MT – DR Ash Creek Fire	July 25, 2012		
WI – DR Severe Storms and Flooding	July 25, 2012		
MD – DR Severe Storms & Straight-line winds	July 27, 2012		

Disaster Amendments



FEMA

Declaration Amendment Number	Effective Date	Amendment Action
Amendment #1 to FEMA-4071-DR-WV	Aug 1, 2012	Extends the incident period from June 29 th through, and including, July 8, 2012

FMAG Requests and Declarations



FEMA

Action (since last report)	Total	FMAG No. and State
Requests DENIED	0	
Requests APPROVED	0	
Requests Expected Next 24 Hours	0	None as of 1200 8/1/12

As of August 1, 2012	2012	2011*
FMAGs Approved	24	81
FMAGs Denied	13	27
<i>* Cumulative FMAG figures as of this date in 2011</i>		



FCO Cadre Member Status

Deployed	Detailed	Available	Not Available	Total
15	1	18	2	36

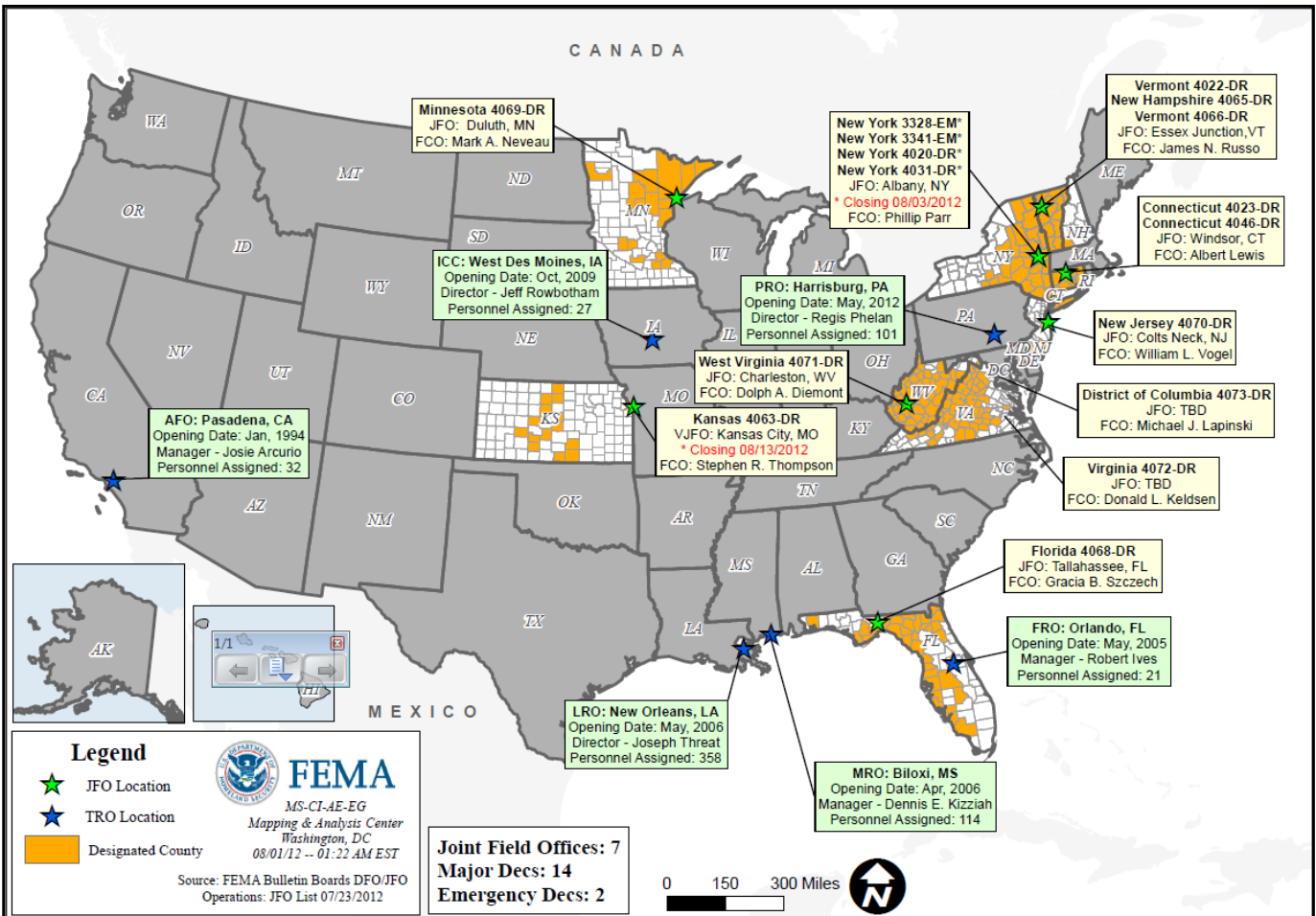
Total Available	Type 1	Type 2	Type 3	Type 4
21*	3*	10	6	2

* All Type 1 FCOs are available unless deployed to a Level 1 event

Open Field Offices as of August 2, 2012



FEMA



Joint Preliminary Damage Assessments



FEMA

				Number of Counties, Tribes & Cities			
Region	State	Event	IA/PA	Requested	Ongoing	Complete	Begin/End
II	NY	Severe Storms/Tornadoes July 26	IA	2	1	1	Began: 7/27 End: TBD
V	OH	Severe Storms/High Winds June 29 – July 2	PA	38	5	2	Began: 7/30 Ended: TBD
V	MN	Severe Storms/High Winds July 2 – July 4	PA	5 counties; 2 tribal	5 counties; 2 tribal	0	Began: 7/25 End: TBD
X	WA	Severe Storms July 13	IA	2	2	0	Began: 8/1 End: 8/2
			PA	TBD	0	0	Begin: TBD End: TBD

MCOV Fleet / Deployment Status



FEMA

MCOV FLEET STATUS						MCOV DISASTER SUPPORT DEPLOYMENTS					
Location	Units Assigned	Available FMC	Deployed Committed	PMC	NMC	DR-State	OPCON	En Route	Unit Prep	Open Request	Notes:
DC Atlanta	21	16	4		1	R4-FL-4068	4				
DC Cumberland	10	10									
DC Ft Worth	15	15									
DC Moffett	6	6									
Holliston, MA	1	1									
Denver, CO	2	2									
Bothell, WA	2	2									
TOTAL	57	52	4	0	1	TOTAL	4	0	0	0	
Included in above totals, units en route for turn-in.											

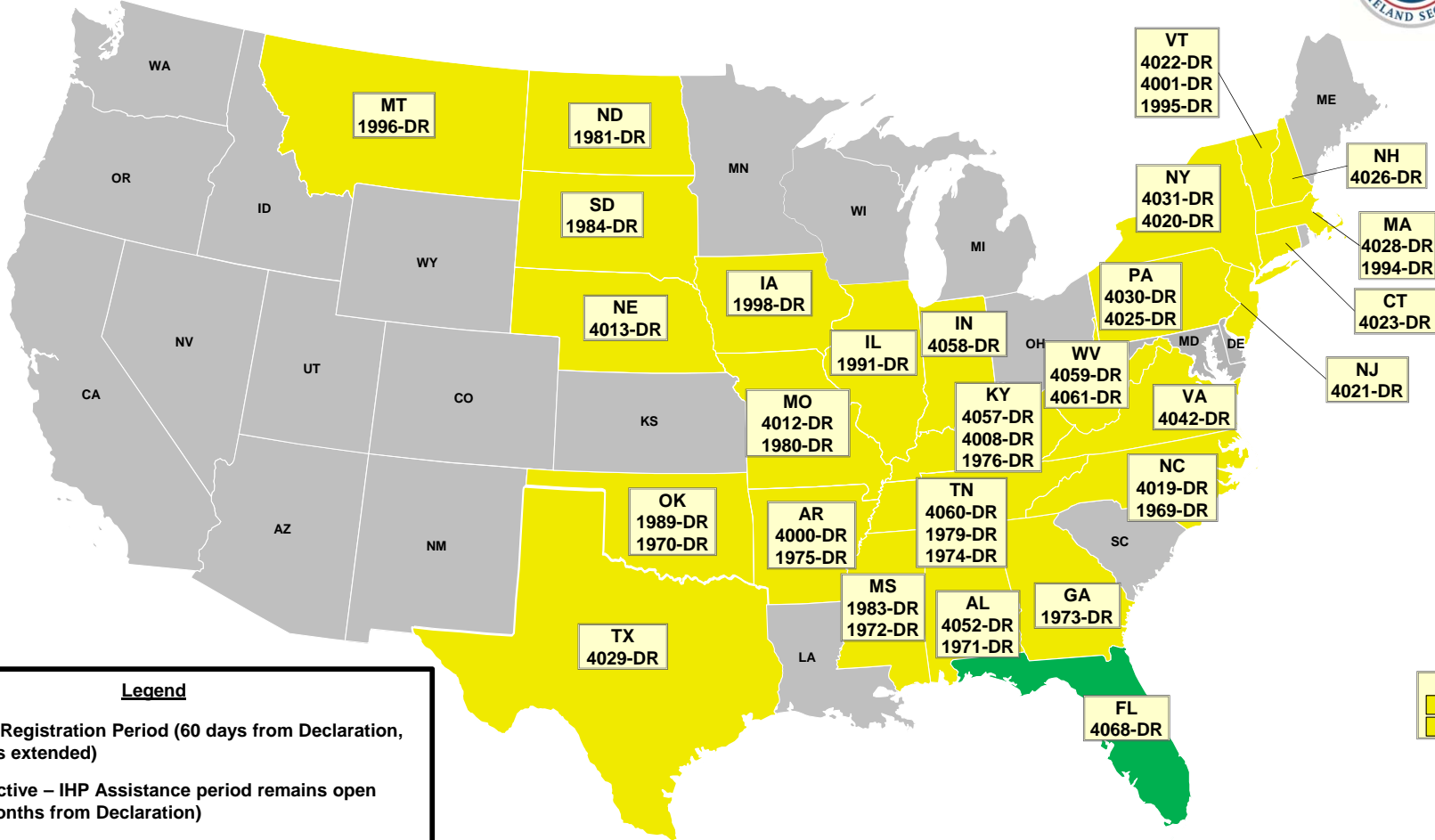
Fully Mission Capable	56
Partially Mission Capable	0
Non-Mission Capable	1
Total Not Deployed	53

Data as of: 08/01/12 @ 1500

Active IA Disasters



FEMA



# of DRs	Legend
1	Open Registration Period (60 days from Declaration, unless extended)
44	IHP Active – IHP Assistance period remains open (18 Months from Declaration)
0	IHP Closing Within 60 Days

Data as of: 08/01/12 @ 1500

IA Registration Statistics



FEMA

Cumulative as of August 1, 2012 @ 1500

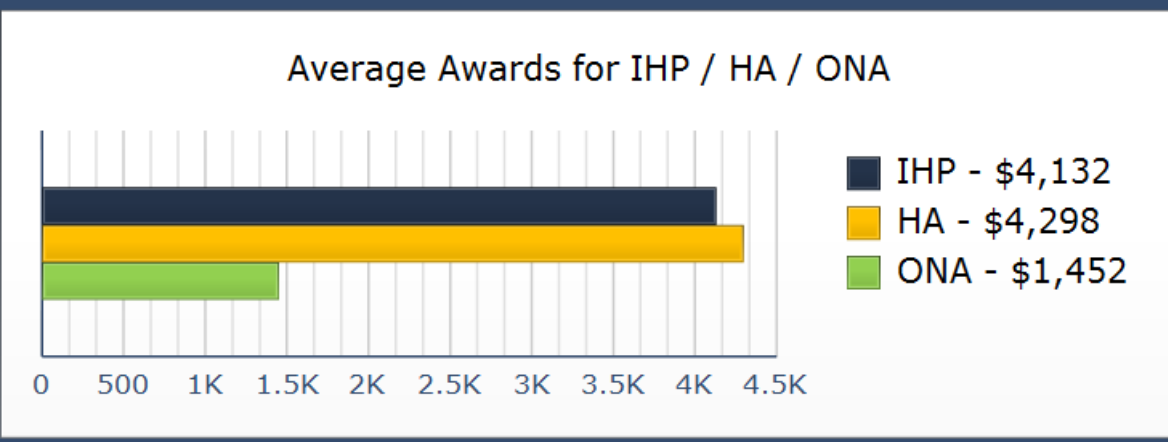
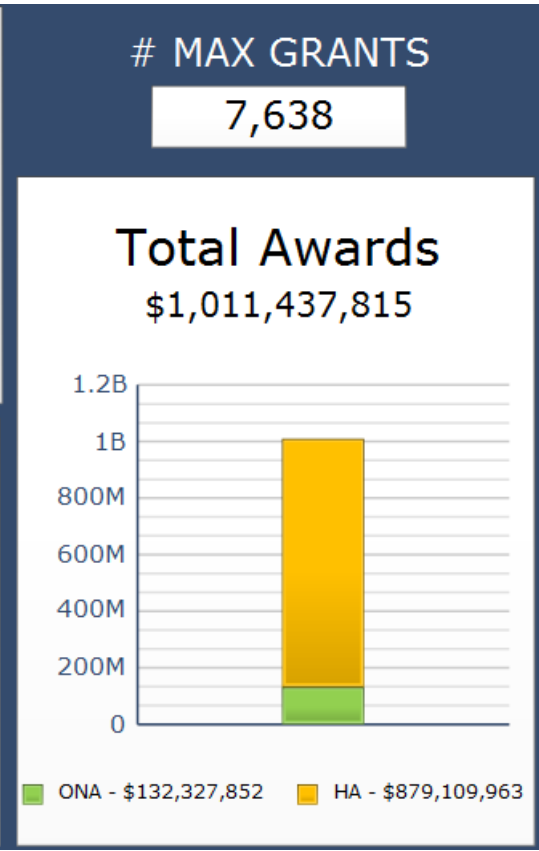
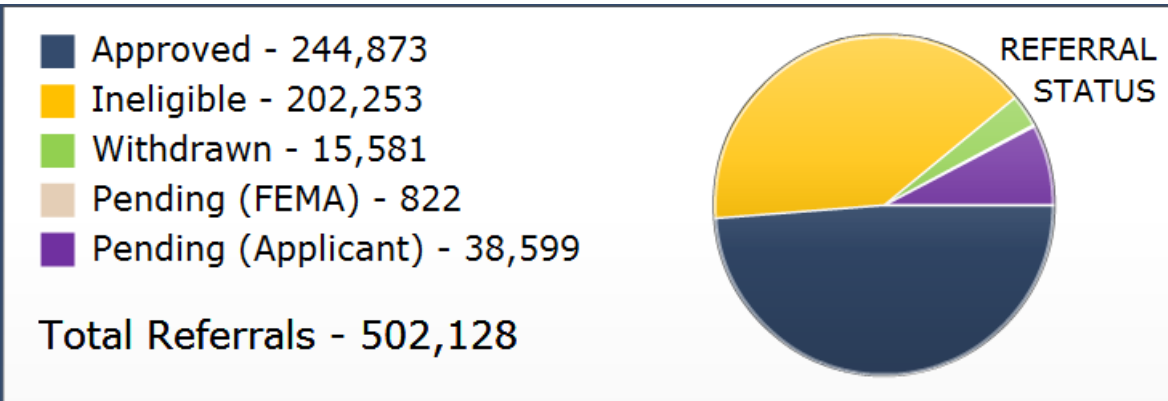
DR # - State	Registrations	Approved Applicants	Total HA Approved	Total ONA Approved	Total IHP Approved
4068 – FL	13,213	4,674	\$15,879,618	\$2,116,881	\$17,996,499
Totals	13,213	4,674	\$15,879,618	\$2,116,881	\$17,996,499
24 hour change	+237	+96	+\$249,395	+\$50,806	+\$300,201

NPSC Call Data for July 31, 2012

Total NPSC Calls Answered (Helpline + Registration Intake)	1,566
Average time to answer call	12 seconds



IHP Referral Status & Awards



Data includes the 45 IHP Active DRs
 # Max Grants = Applicants awarded maximum IHP (\$30,200 as of FY2012)

Data as of: 08/01/12 @ 1500

Housing Inspection Statistics



FEMA

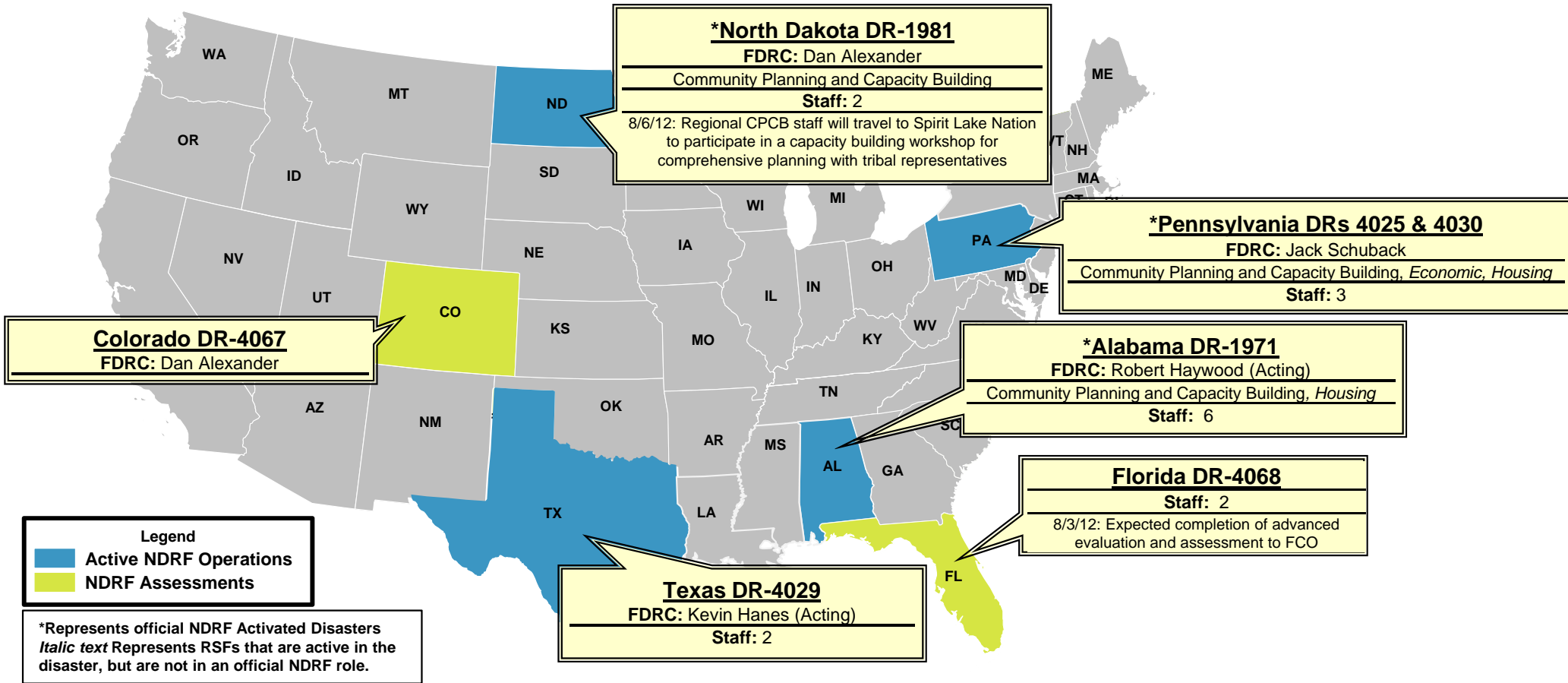
Data as of August 1, 2012 @ 1600					
DR # - State	Inspectors	Inspections Assigned	Inspections Completed	Inspection % Complete	Turnaround Time (Days)
4068 – FL	25	10,590	10,245	96.7%	1.8
TOTAL	25	10,590	10,245	96.7%	1.8
24 hour change	-2	+179	+202	+0.3%	-0.0

* Only displaying inspectors for DRs that currently have open registration periods

NDRF Operations



FEMA



NDRF – National Disaster Recovery Framework
 NDRPD – National Disaster Recovery Planning Division

Data as of: 08/01/12 @ 1500

IMAT Status



FEMA

National Teams					
Team	Status	Team	Status	Team	Status
BLUE (East)		WHITE (Central)	IN (EX)	RED (West)	
Regional Teams					
Team	Status	Team	Status	Team	Status
Region I	RI (EX)	Region V		Region IX-1	
Region II	NY	Region VI-1		Region IX-2	
Region III	VA	Region VI-2		Region X	
Region IV-1		Region VII			
Region IV-2	FL	Region VIII			

= Available/Mission Capable
 = Assigned/Deployed
 = Available/Partially Mission Capable
 = Out-of-Service

Urban Search & Rescue



INCIDENT SUPPORT TEAMS (Red-White-Blue) – Monthly On Call Rotation											
JAN	FEB	MAR	APR	MAY	JUN	JUL	AUG	SEP	OCT	NOV	DEC
WEST				CENTRAL				EAST			
Team	Status	Team	Status	Team	Status	Team	Status				
CA-TF1	Available	AZ-TF1	Available	FL-TF1	Available						
CA-TF2	Available	CO-TF1	Available	FL-TF2	Available						
CA-TF3	Available	IN-TF1	Available	MA-TF1	Available						
CA-TF4	Available	MO-TF1	Available	MD-TF1	Available						
CA-TF5	Available	NE-TF1	Available	NY-TF1	Available						
CA-TF6	Available	NM-TF1	Available	PA-TF1	Conditionally Available						
CA-TF7	Available	NV-TF1	Conditionally Available	VA-TF1	Available						
CA-TF8	Available	TN-TF1	Conditionally Available	VA-TF2	Available						
WA-TF1	Available	TX-TF1	Available	OH-TF1	Available						
		UT-TF1	Available								

= Available/Mission Capable
 = Assigned/Deployed
 = Available/Partially Mission Capable
 = Out-of-Service

RRCC / Regional Watch Center Status



FEMA

Region	RRCC	Regional Watch Center
I	Watch/Steady State	Maynard MOC (24/7)
II	Level III (Partial Activation)	24/7
III	Watch/Steady State	24/7
IV	Watch/Steady State	24/7
V	Watch/Steady State	24/7
VI	Watch/Steady State	Denton MOC (24/7)
VII	Level III (Monitoring)	24/7
VIII	Watch/Steady State	Denver MOC (24/7)
IX	Watch/Steady State	24/7
X	Level III (Monitoring)	Bothell MOC (24/7)

National Team Status



FEMA

Team/Status	Current Location	Remarks
National Watch Center	Washington, DC	Watch/Steady State
NRCC	Washington, DC	Not Activated
HLT	Miami, FL	Activated
DEST	Washington, DC	Not Activated
Mission Capable	Partially Mission Capable	Not Mission Capable



FEMA

FEMA's mission is to support our citizens and first responders to ensure that as a nation we work together to build, sustain, and improve our capability to prepare for, protect against, respond to, recover from, and mitigate all hazards.