



FEMA

Daily Operations Briefing

June 18, 2012

As of 8:30 a.m. EDT

Significant Activity: June 15-18

Significant Events:

- Wildfires – NM & CO

Tropical Activity:

- Atlantic – Area 1 (MODERATE chance – 30%)
- Eastern Pacific – Area 1 (MODERATE chance – 40%)
- Central Pacific – No tropical cyclones expected through Wednesday morning
- Western Pacific – Typhoon Guchol (05W)

Significant Weather:

- Severe thunderstorms possible – Upper Mississippi Valley to Great Lakes
- High heat expected – Southern/Central Plains
- Red Flag Warnings: NE, UT, AZ, CA, CO, NV, OR, ID, WY, & AK
- Critical Fire Weather: OR, UT, CO, NV, AZ, WY & ID
- Space Weather: Moderate activity past 24 hours; No activity expected next 24 hours

Earthquake Activity: None

Disaster Declaration Activity:

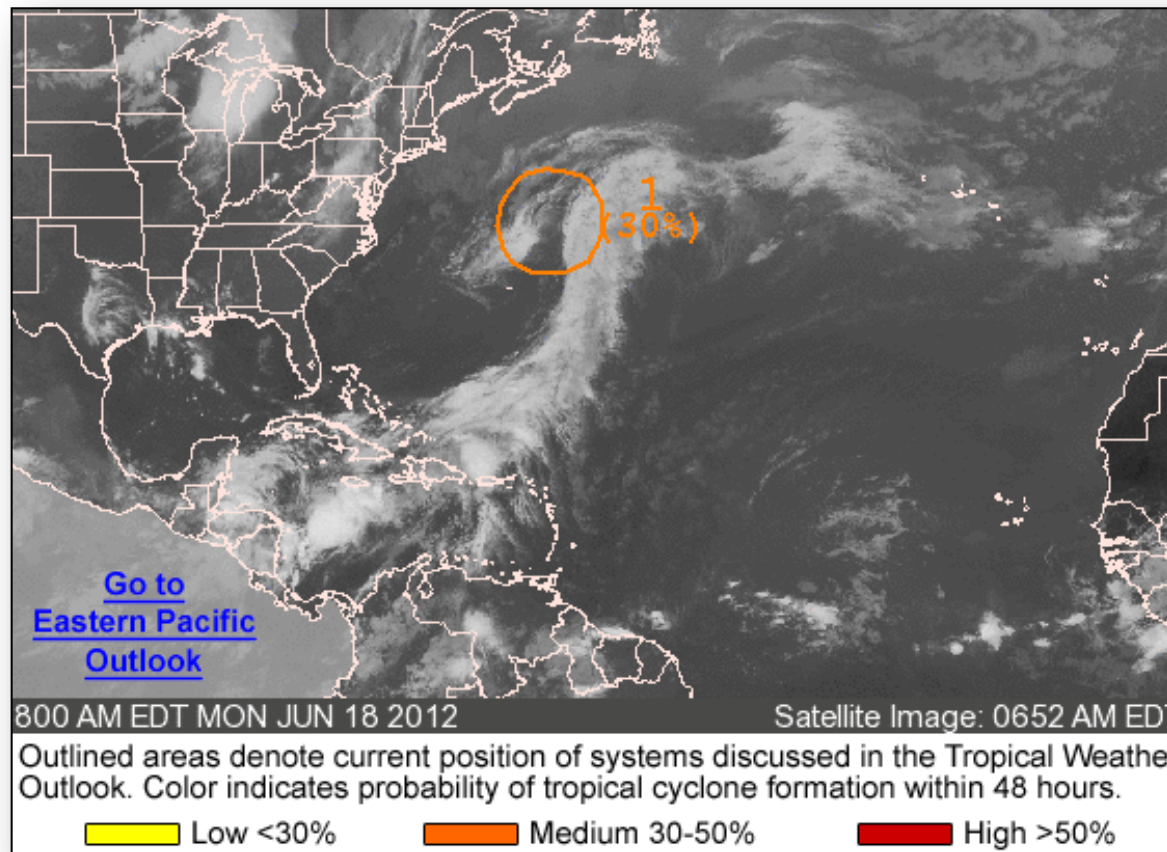
Major Disaster Declaration – New Hampshire (June 15)

Amendment No. 1 to FEMA-4064-DR-OK (June 15)

Atlantic – Tropical Outlook



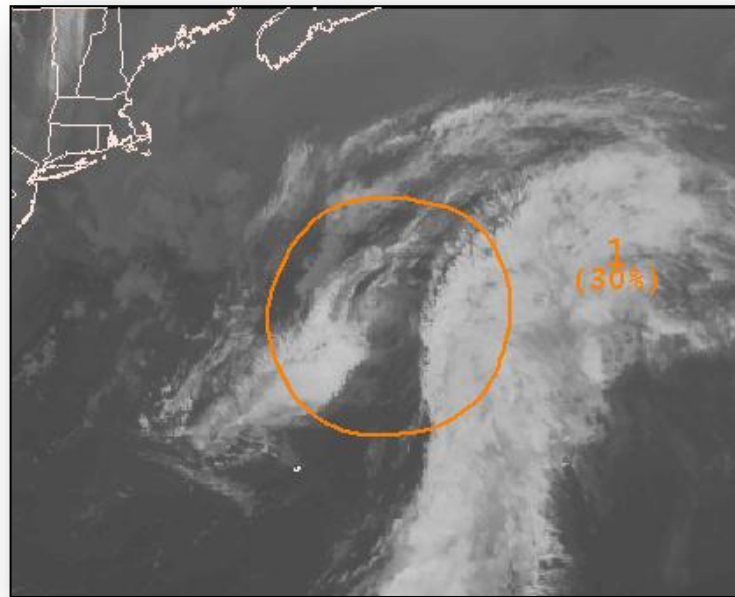
FEMA



Atlantic – Area One

At 8:00 a.m. EDT

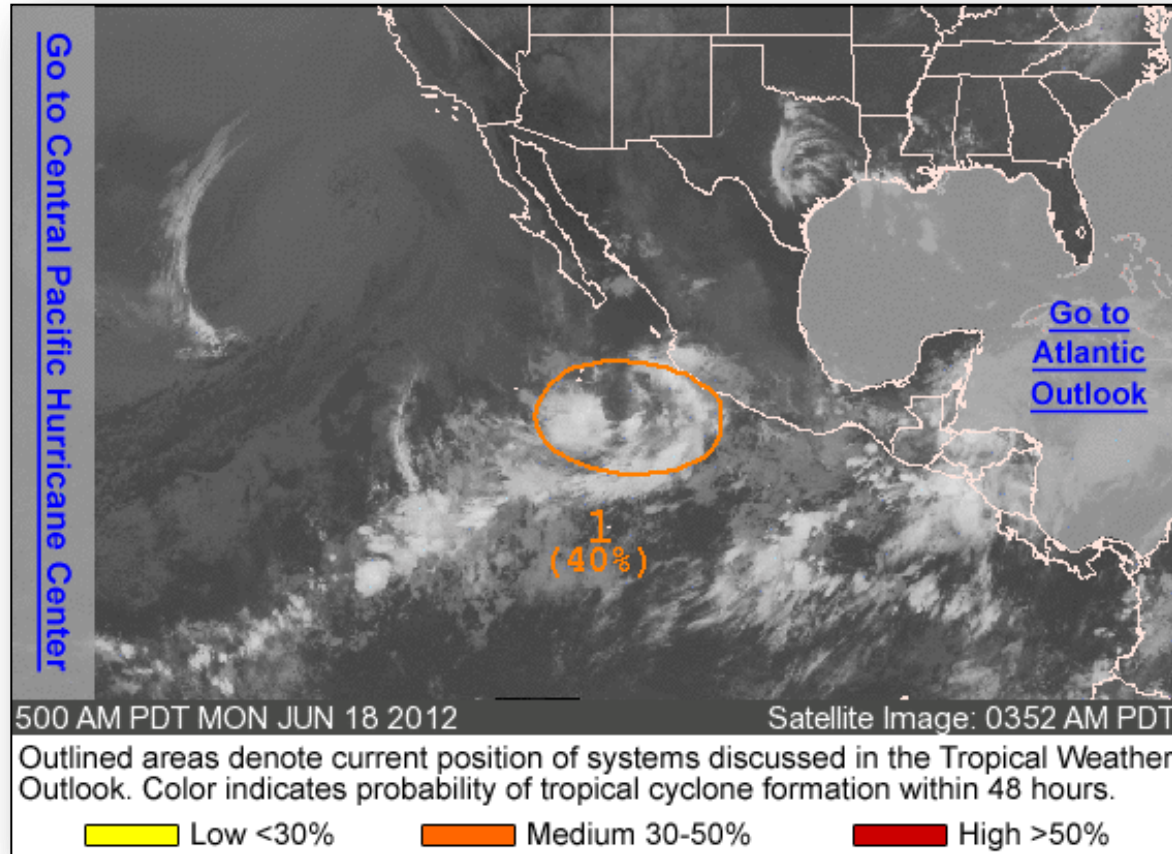
- Well defined non-tropical surface low 300 miles NE of Bermuda
- Producing gale-force winds and scattered showers and thunderstorms
- Could gradually acquire subtropical characteristics
- Moving NE at 10 mph
- MEDIUM chance (30%) of becoming tropical or subtropical cyclone next 48 hours



Eastern Pacific – Tropical Outlook



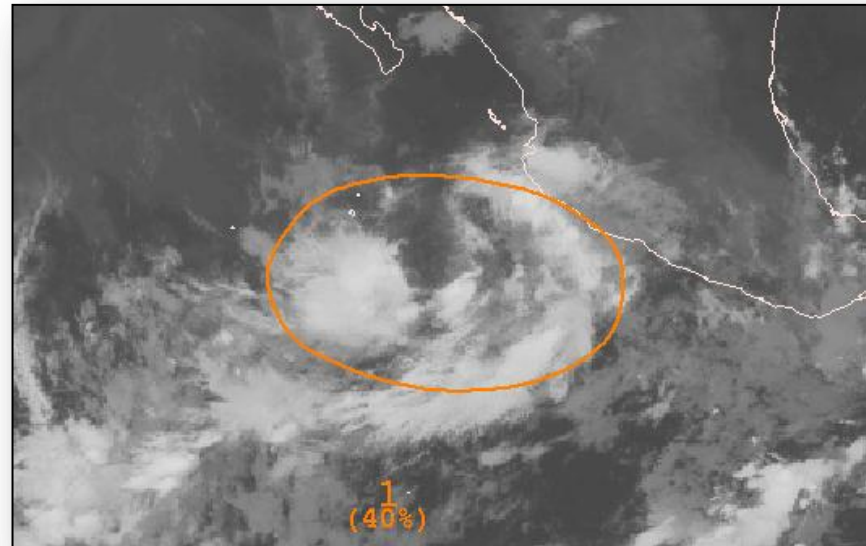
FEMA



Eastern Pacific – Area One

At 8:00 a.m. EDT

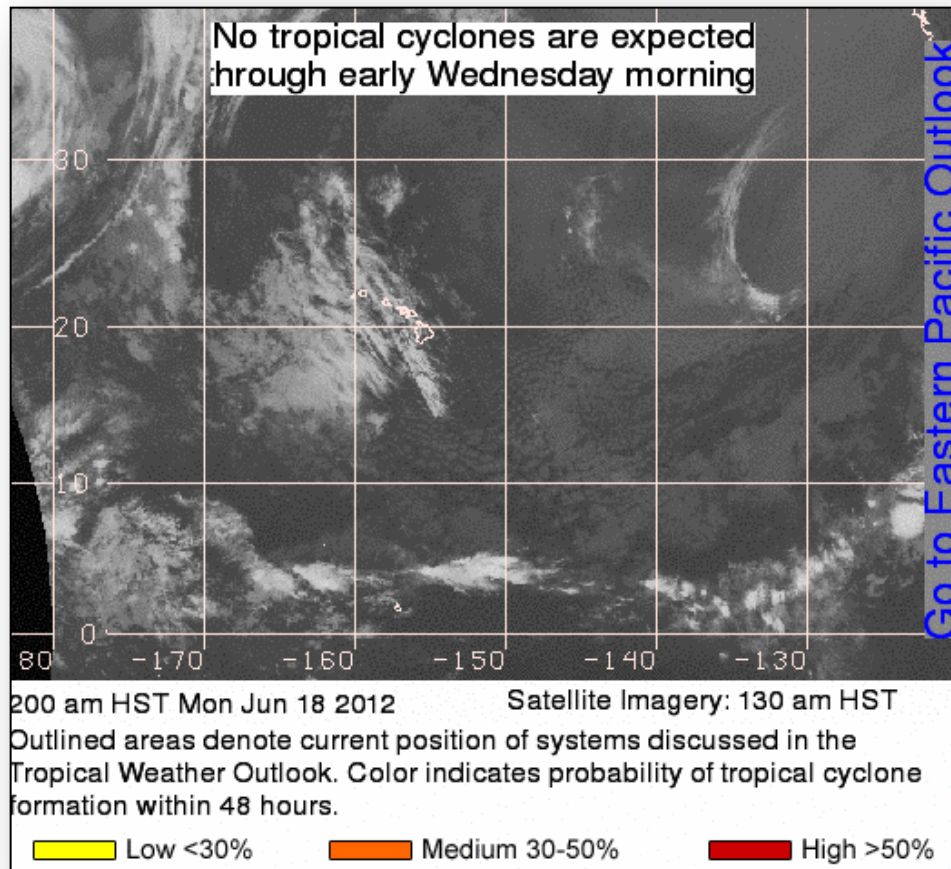
- Broad low pressure system 270 miles WSW of Manzanillo, MX
- Producing large area of disorganized showers and thunderstorms
- Some development is possible next 48 hours
- Moving slowly eastward
- MEDIUM chance (40%) of becoming tropical cyclone next 48 hours



Central Pacific – Tropical Outlook



FEMA



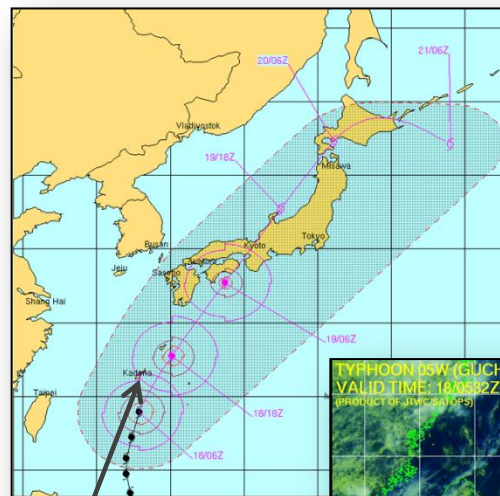
Western Pacific – Typhoon Guchol (05W)



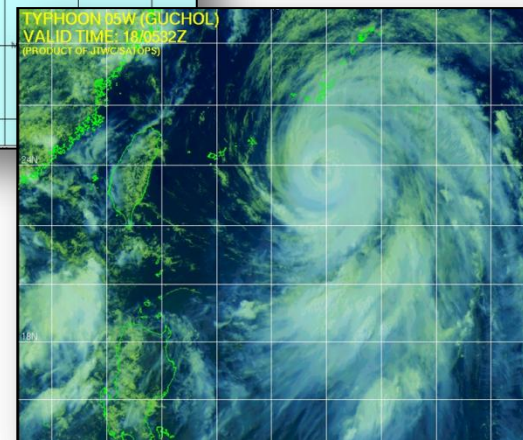
FEMA

At 3:00 a.m. EDT

- 170 miles S of Kadena AB, Okinawa, Japan
- Moving NNW at 12 mph
- Max sustained winds 80 mph, gusts 100 mph
- Max significant wave height 60 feet
- Kadena AB at TCCOR 1
- Expected to pass approximately 77 miles E of Kadena AB, Japan



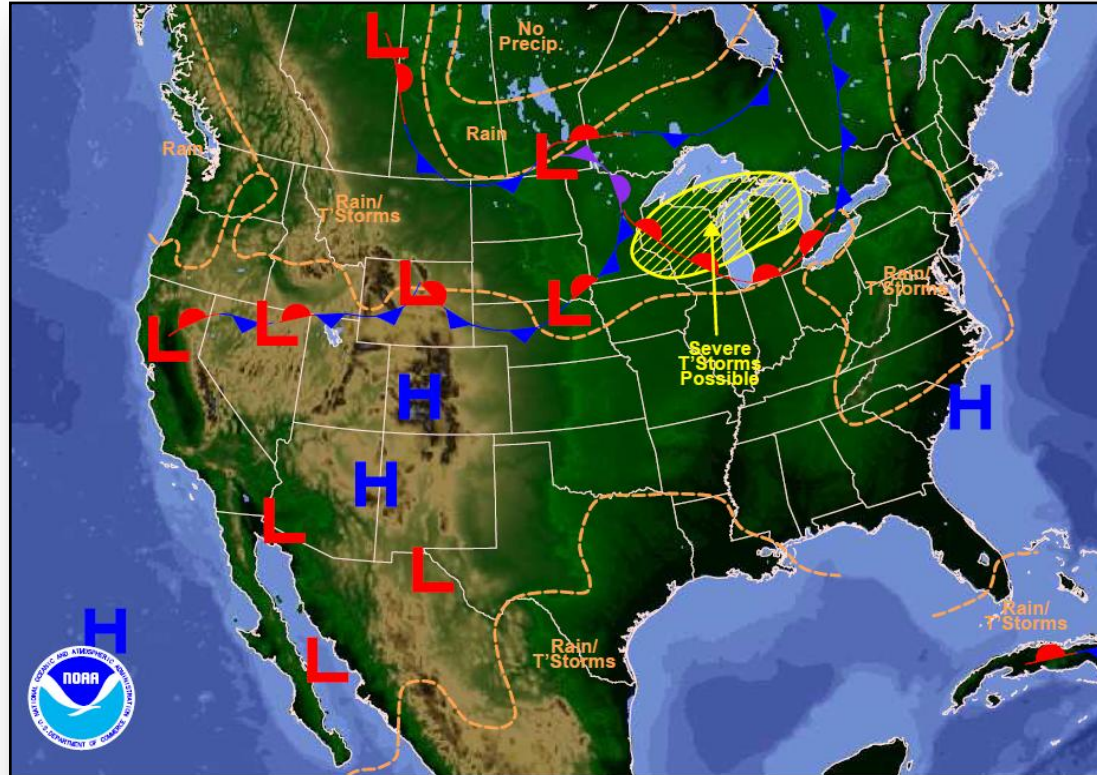
Kadena Air Base,
Okinawa, Japan



National Weather Forecast



FEMA

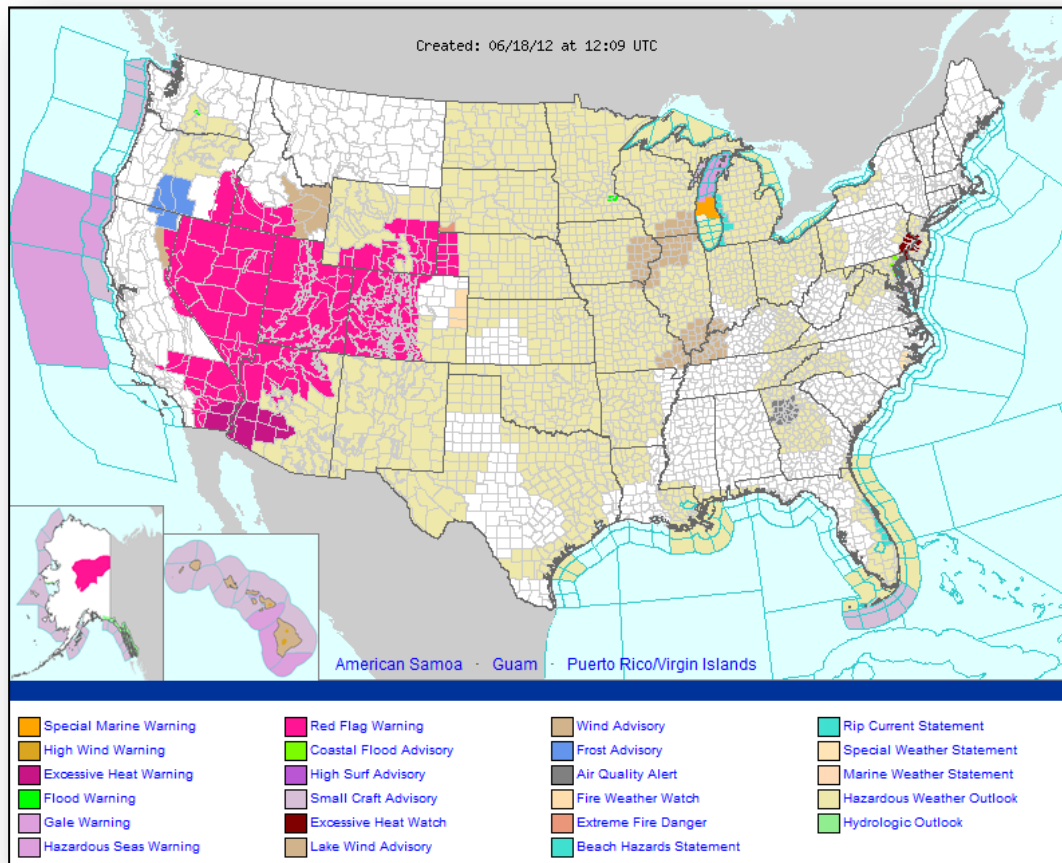


Weather Forecast for Mon, Jun 18, 2012, issued 4:25 AM EDT
DOC/NOAA/NWS/NCEP/Hydrometeorological Prediction Center
Prepared by Monarski based on HPC, SPC, and NHC forecasts

Active Watches/Warnings



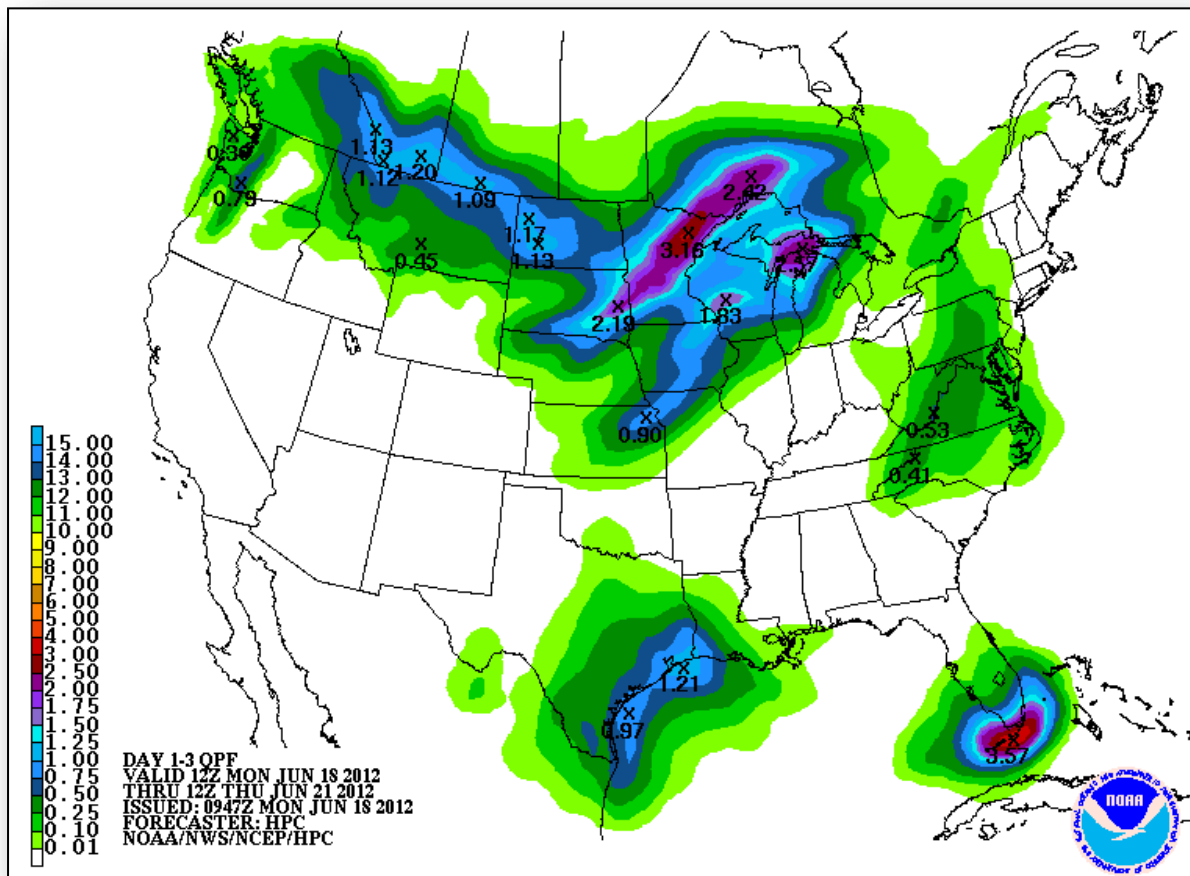
FEMA



Precipitation Forecast 1 – 3 Day



FEMA



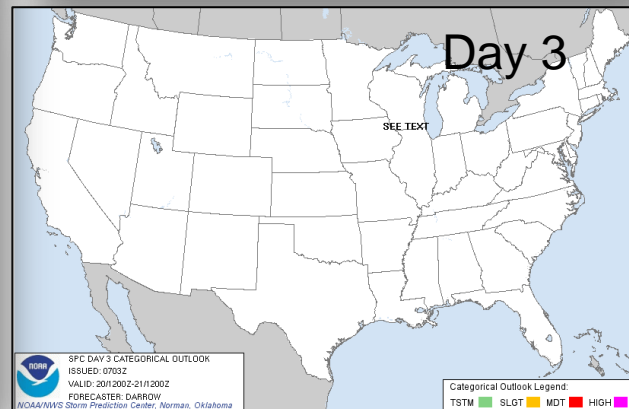
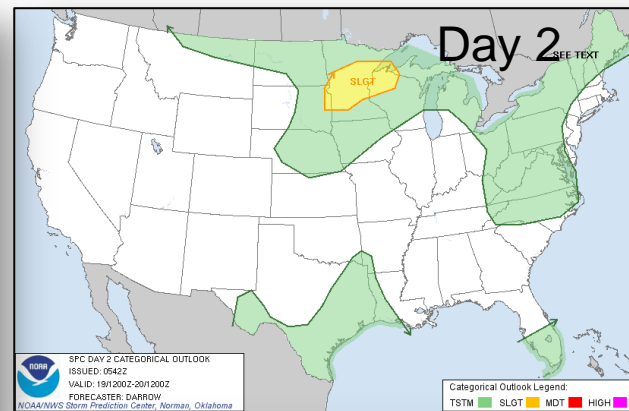
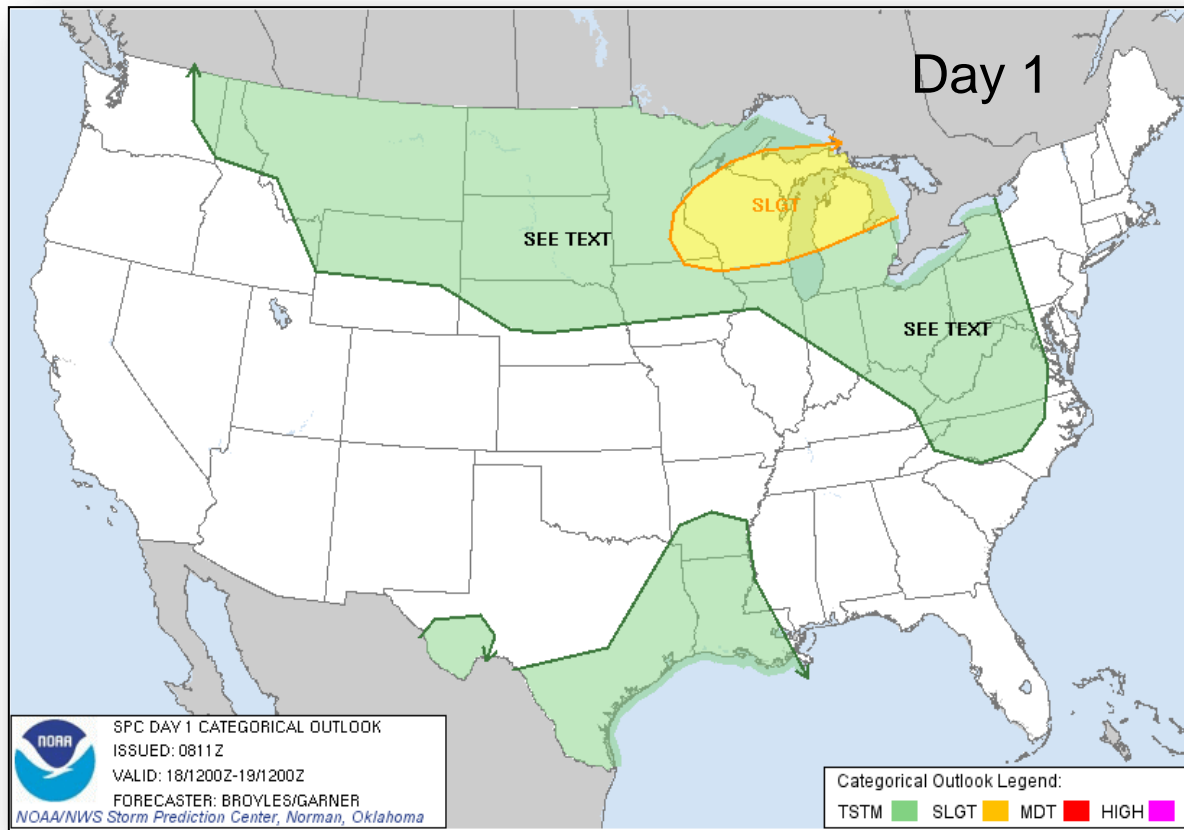
River Flood Outlook – 7 Day



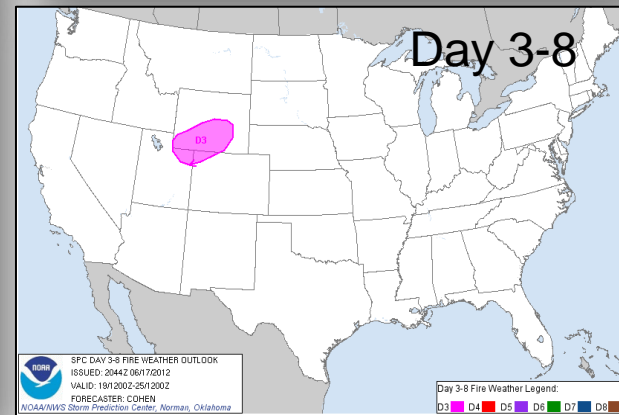
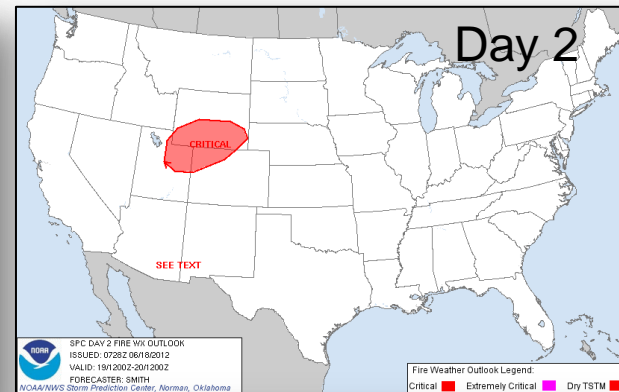
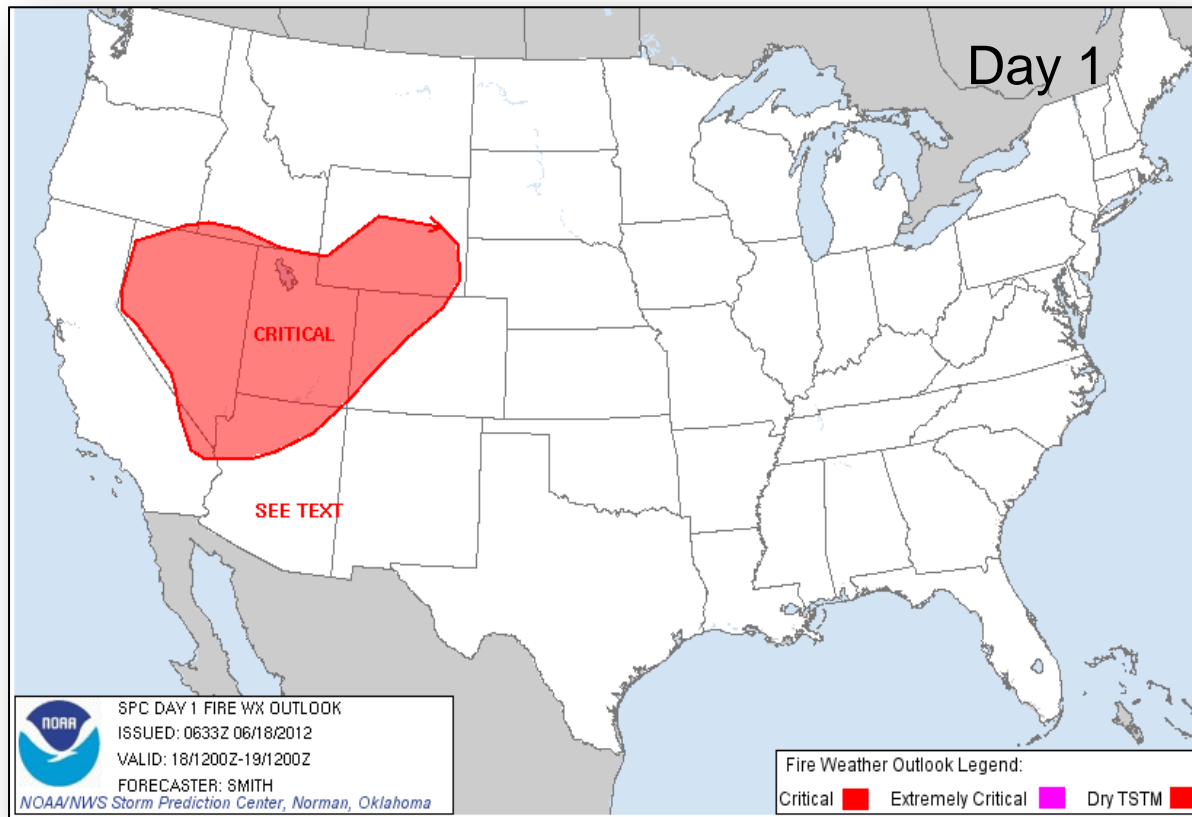
FEMA



Convective Outlook Days 1 – 3



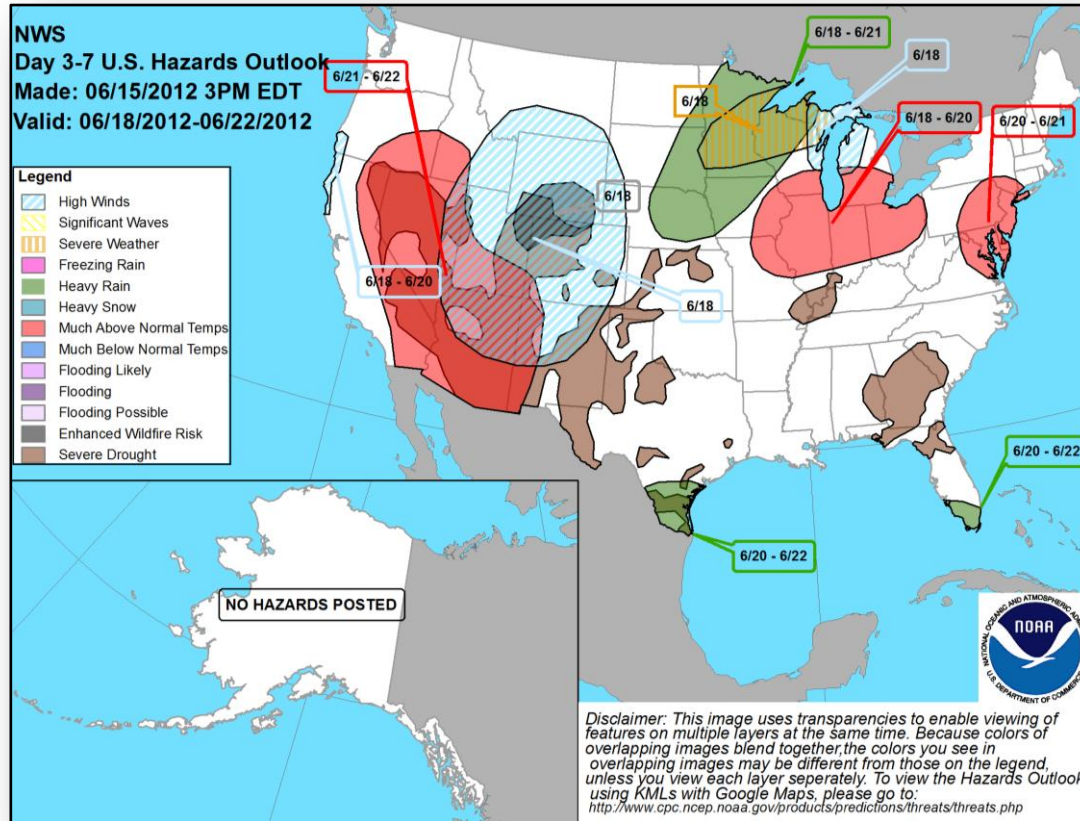
Critical Fire Weather Areas Days 1 – 8



Hazard Outlook: June 18 – 22



FEMA



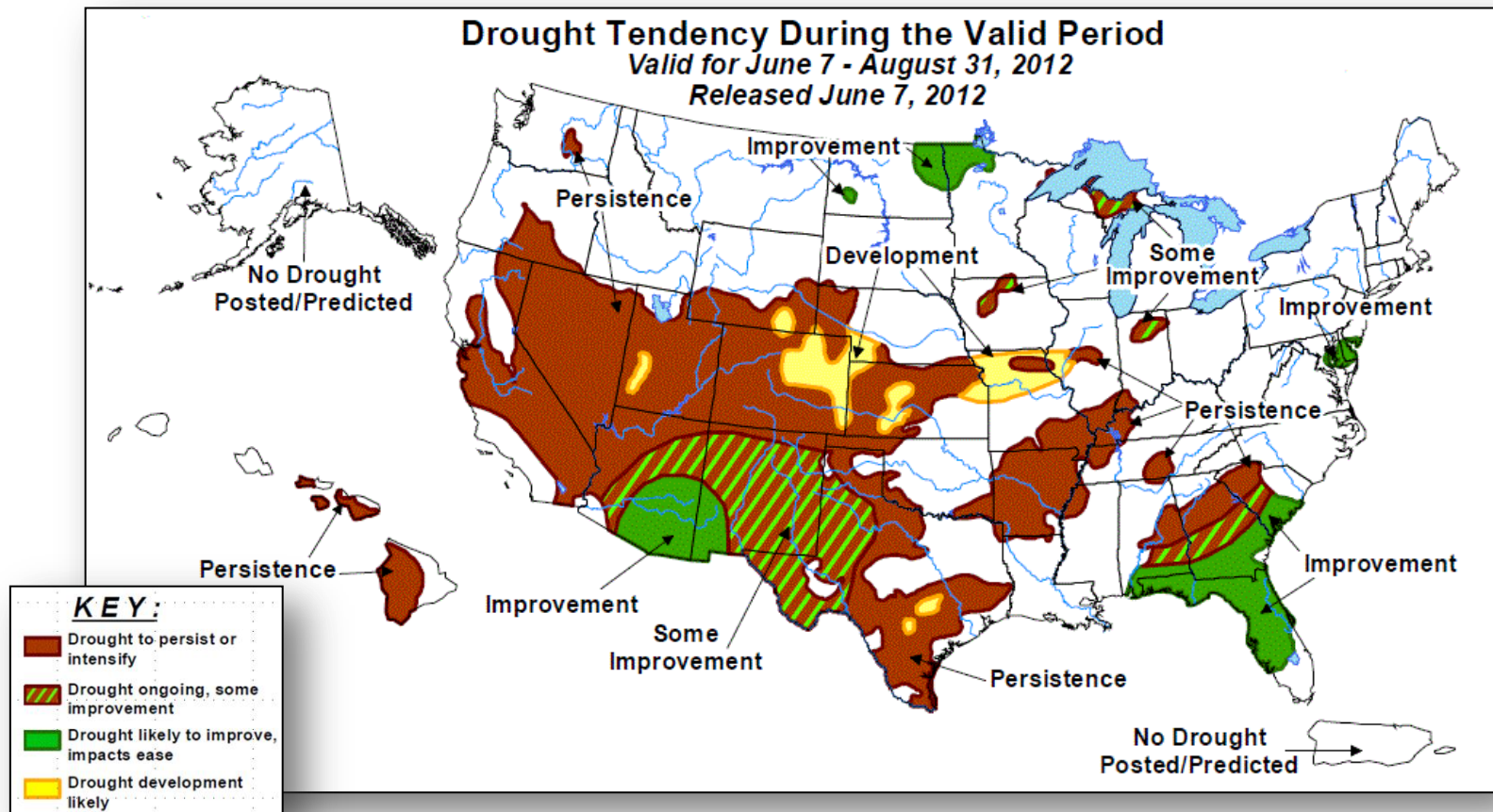


NOAA

Seasonal Drought Outlook



FEMA



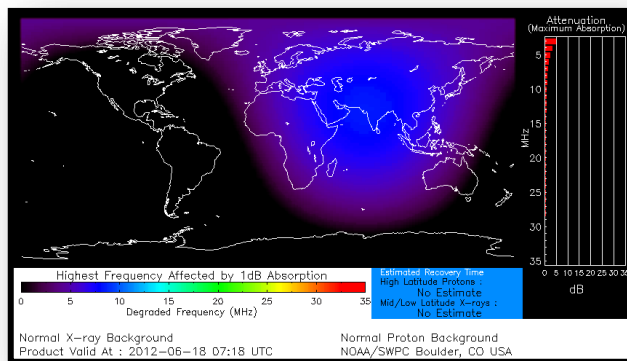
Space Weather



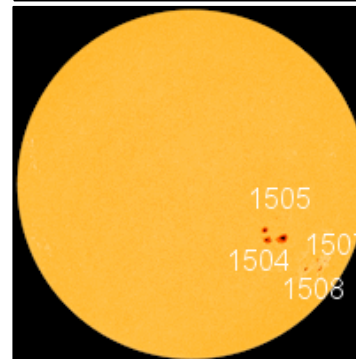
FEMA

NOAA Scales Activity Range 1 (minor) to 5 (extreme)	Past 24 Hours	Current	Next 24 Hours
Geomagnetic Storms	G2	None	None
Solar Radiation Storms	None	None	None
Radio Blackouts	None	None	None
Space Weather	Moderate	None	None

HF Communications Impact



Sunspot Activity



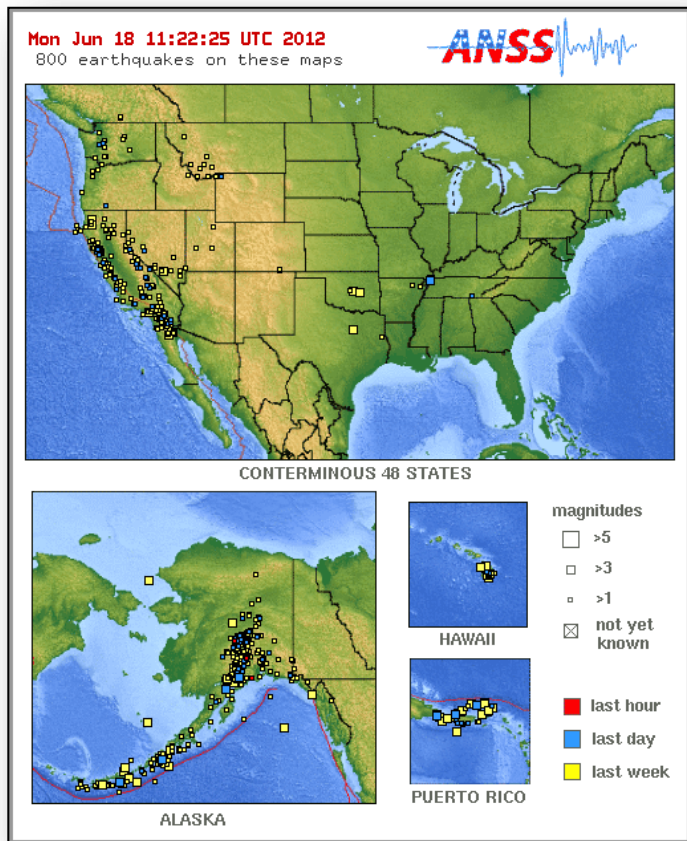
Significant Earthquake Activity



FEMA

U.S. Activity

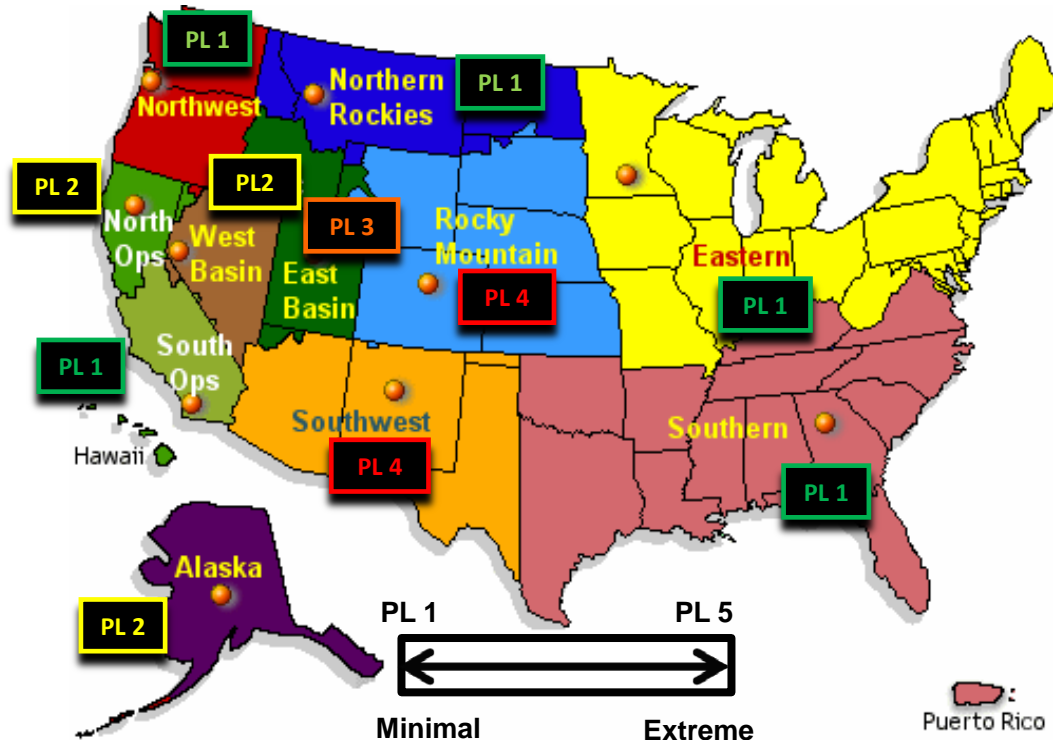
- No significant earthquake activity



U.S. Wildland Fire Preparedness Levels

National Preparedness Level: 3

Two (2) or more Geographic Areas are experiencing wildland or prescribed fire activities requiring a major commitment of National Resources. Additional resources are being ordered and mobilized through NICC. Type 1 and 2 Incident Management Teams are committed in two (2) or more Geographic Areas and crew commitment nationally is at 50%.

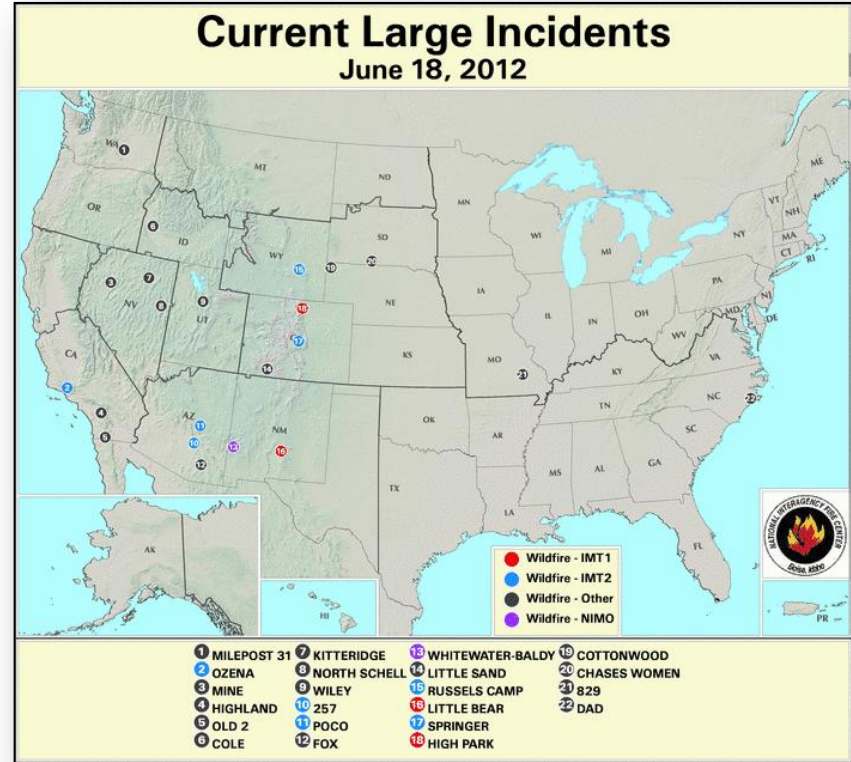


As of June 18, 2012

National Fire Activity

June 18, 2012:

- National Preparedness Level: 3
- Initial Attack Activity: Light (116)
- New Large Fires: 10
- Large Fires Contained: 5
- Uncontained Large Fires: 16
- NIMOs Committed: 2
- Type 1 IMT(s) Committed: 2
- Type 2 IMT(s) Committed: 3
- States Affected: NM, AZ, CO, WY, NE, SD, CA, UT, ID, NV, NC, WA & MO

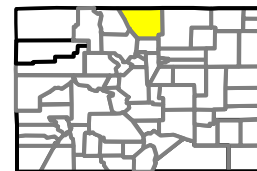
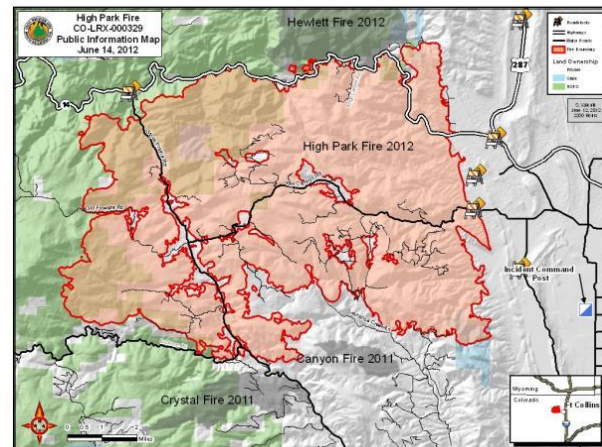


High Park Fire, CO



Fire Name	Location	Acres burned	% Contained	Est. Full Containment	FMAG Request	Structures Lost / Threatened	Fatalities / Injuries
High Park	Larimer County, CO	56,480 (+1,430)	45%	Unknown	FEMA-2980-FM-CO June 9, 2012	181 lost / 1,969 (+969) threatened	1/1

- ▲ Structure protection extremely effective—no loss of additional homes over the last few days.
- ▲ Increase in fire behavior due to strong winds and low relative humidity
- Evacuations:
 - ▲ 3,100 total evacuation notices sent; As of Friday, 1,200 notifications were sent notifying residents they may return
 - ▲ High winds caused mandatory evacuations for Hewlett Gulch and re-evacuations for Soldier and Mill Canyons
- ▲ 1 (-1) ARC shelter open; 4 (-12) occupants (*ESF6 7am, June 18*)
- ▲ 1,748 (+117) personnel, including a Type 1 IMT
- Larimer County Disaster Recovery Center remains open
- State EOC activated to Level IV
- FEMA Region VIII RRCC activated to Level III; IMAT deployed to SEOC

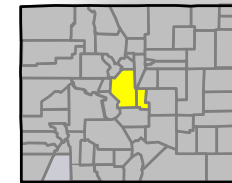
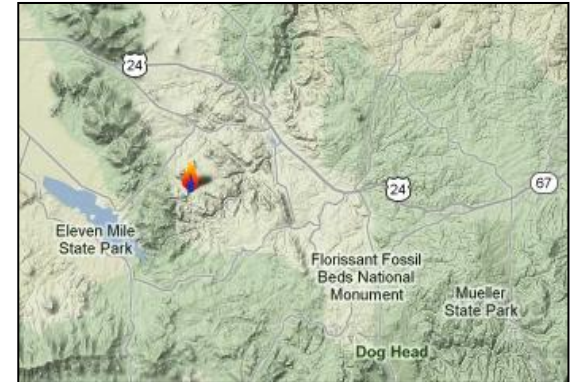


Springer Fire, CO



Fire Name	Location	Acres burned	% Contained	Est. Full Containment	FMAG Request	Structures Lost / Threatened	Fatalities / Injuries
Springer Fire	Park and Teller counties	450	0%	TBD	In Process	0 lost / 200 homes threatened	0 / 0

- Located 5 miles SW of Lake George (pop 2,110) & 40 miles W of Colorado Springs (pop 420,000)
- Burning mostly on federal land (Pike & San Isabel National Forests); and unimproved private lands – no homes or structures in fire area
- Mandatory evacuations for 200 homes: Wagon Tongue Gulch & Echo Valley subdivisions, Circle C & Beaver ranches, Mile State Park and Camp Alexander
- Evacuation Center established – Lake George Community Center
- 150 personnel; Type 2 IMT to take over management today
- FEMA Region VIII IMAT deployed to State EOC
- FEMA Region VIII RRCC activated to Level III (Monitoring)



■ = Affected counties

Little Sand Fire, CO - Final

Fire Name	Location	Acres burned	% Contained	Est. Full Containment	FMAG Request	Structures Lost / Threatened	Fatalities / Injuries
Little Sand Fire	Archuleta & Hinsdale Counties	11,988 (+371)	30%	TBD	None	0 lost / 28 homes & 43 outbuildings threatened	0 / 2

- Fire began on May 13, 2012 in lands managed by the San Juan National Forest and located in rugged and inaccessible terrain
- Located approximately 13 miles NW of Pagosa Springs (pop 1,591) in Archuleta Co. (pop 12,396) & Hinsdale Co. (pop 843)
- ▲ Evacuation for 7 residents of Weminuche Valley remains in effect
- ▲ 174 (+9) personnel with NIMO managing incident
- ▲ FEMA Region VIII IMAT deployed to State EOC
- FEMA Region VIII RRCC activated to Level III (Monitoring)

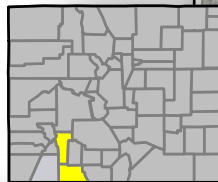
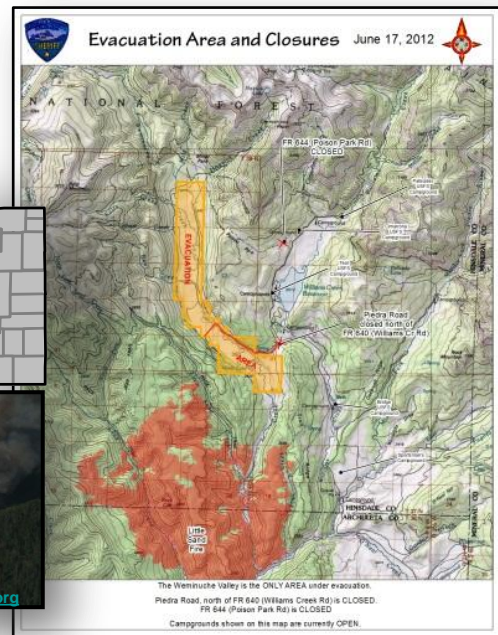


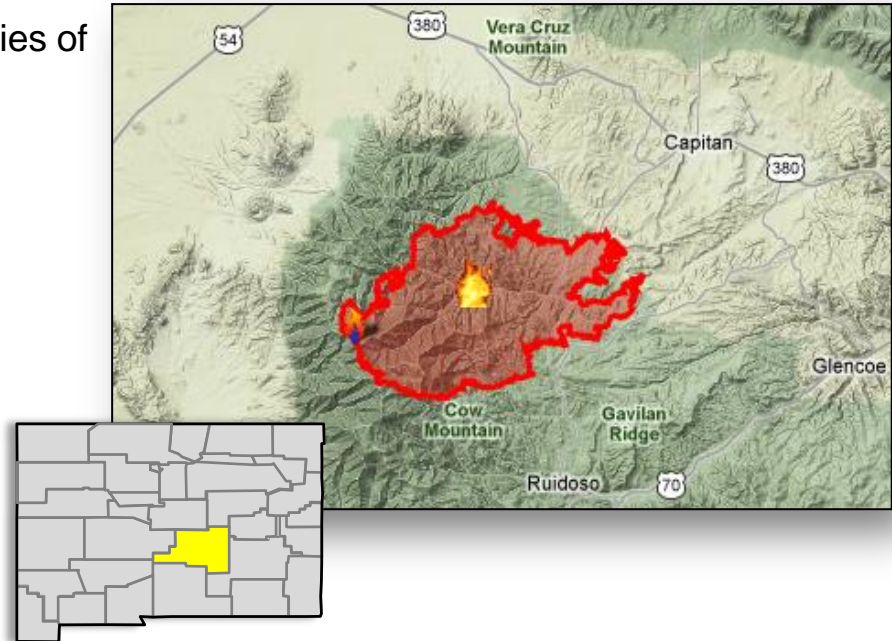
Photo Credit: www.Inciweb.org



Little Bear Fire, NM

Fire Name	Location	Acres burned	% Contained	Est. Full Containment	FMAG Request	Structures Lost / Threatened	Fatalities / Injuries
Little Bear	Lincoln County, NM	38,116 (-17)	60%	Unknown	FEMA-2979-FM-NM June 9, 2012	254 lost / Threatened unknown	0 / 3 injuries

- All evacuations have been lifted except for communities of Angus & Bonita Park
- Release of excess resources continues
- ▲ 1,136 (-182) personnel with Type 1 IMT
- ▲ Joint IA PDA's continue
- State EOC at Level III (Increased Readiness)
- FEMA LNO deployed to State EOC
- FEMA Region VI RRCC at Watch/Steady State

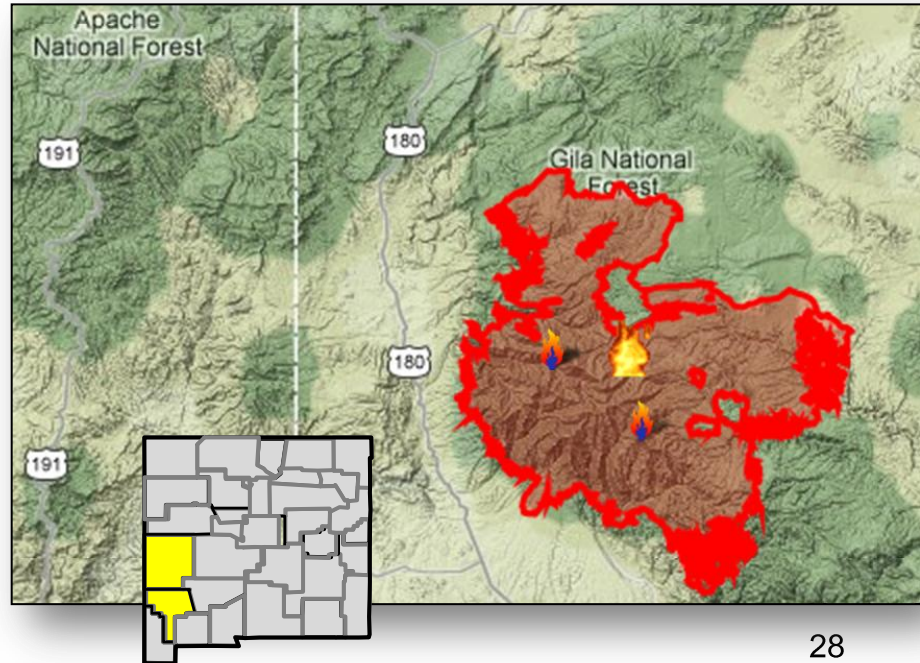


Whitewater-Baldy Complex, NM - Final



Fire Name	Location	Acres burned	% Contained	Est. Full Containment	FMAG Request	Structures Lost / Threatened	Fatalities / Injuries
Whitewater-Baldy Complex	Gila Wilderness (Catron/Grant counties)	296,562 (+5,932)	80% (+5)	July 12, 2012	FEMA-2978-FM-NM May 26, 2012	20 lost / Unknown	0 / 5

- ▲ Significant change in containment over the weekend from 63% to 80%
- ▲ 278 (-25) personnel including National Incident Management Organization
 - No evacuations
 - State EOC at Level III (Increased Readiness)
 - FEMA LNO deployed to State EOC
 - FEMA Region VI at Watch/Steady State



Major Disaster Declaration-New Hampshire



FEMA

FEMA-4065-DR-NH

- Major Disaster Declaration declared June 15, 2012
- For Severe Storm & Flooding that occurred May 29 - 31, 2012
- Public Assistance, including Direct Federal Assistance, for Cheshire County
- Hazard Mitigation statewide
- FCO James N. Russo



Approved PA county

Disaster Requests & Declarations



Declaration Requests in Process		Requests APPROVED (since last report)	Requests DENIED (since last report)
0	Date Requested	1	0
NH – DR Severe Storm and Flooding May 29-31, 2012	June 8, 2012	Declared June 15, 2012	

FMAG Requests and Declarations



Action (since last report)	Total	FMAG No. and State
Requests DENIED	0	
Requests APPROVED	0	
Requests Expected Next 24 Hours	1	Springer Fire, CO

As of June 17, 2012	2012	2011*
FMAGs Approved	7	60
FMAGs Denied	6	22
* Cumulative FMAG figures as of this date in 2011		

Disaster Amendments



Declaration Amendment Number	Effective Date	Amendment Action
Amendment No.1 FEMA-4064-DR-OK	June 15, 2012	Changes FCO from Nancy M. Casper to William J. Doran III

FCO Cadre Member Status



Deployed	Detailed	Available	Not Available	Total
13	1	20	3	37

Total Available	Type 1	Type 2	Type 3	Type 4
23*	3*	10	6	4

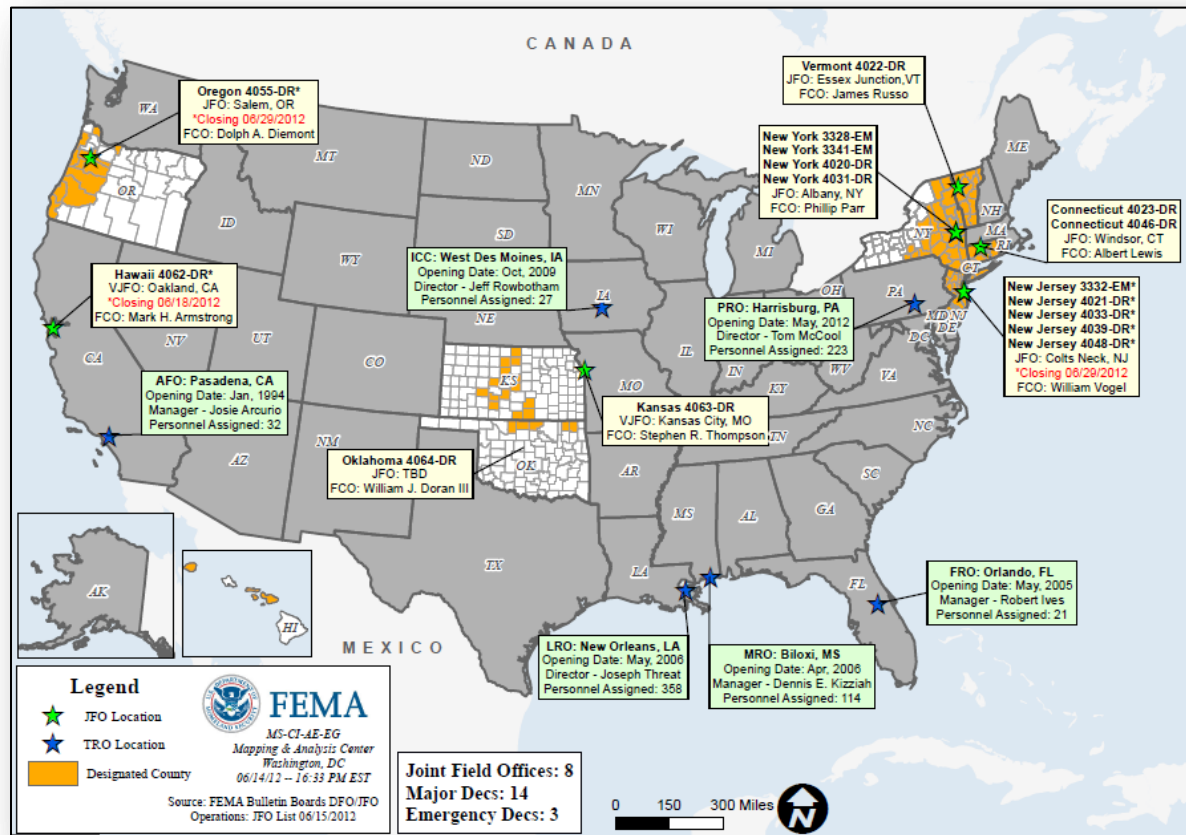
*** All Type 1 FCOs are available unless deployed to a Level 1 event**

As of: 06/15/12

Open Field Offices as of June 18, 2012



FEMA



Joint Preliminary Damage Assessments



				Number of Counties/Tribes			
Region	State	Event	IA/ PA	Requested	Ongoing	Complete	Begin / End
IV	FL	Severe Weather and Flooding June 9, 2012 - Ongoing	IA	2	2	0	Began: 6/18 End: TBD
VI	NM	Little Bear Fire June 4, 2012 – Ongoing	IA	1	1	0	Began: 6/16 End: TBD

MCOV Fleet / Deployment Status



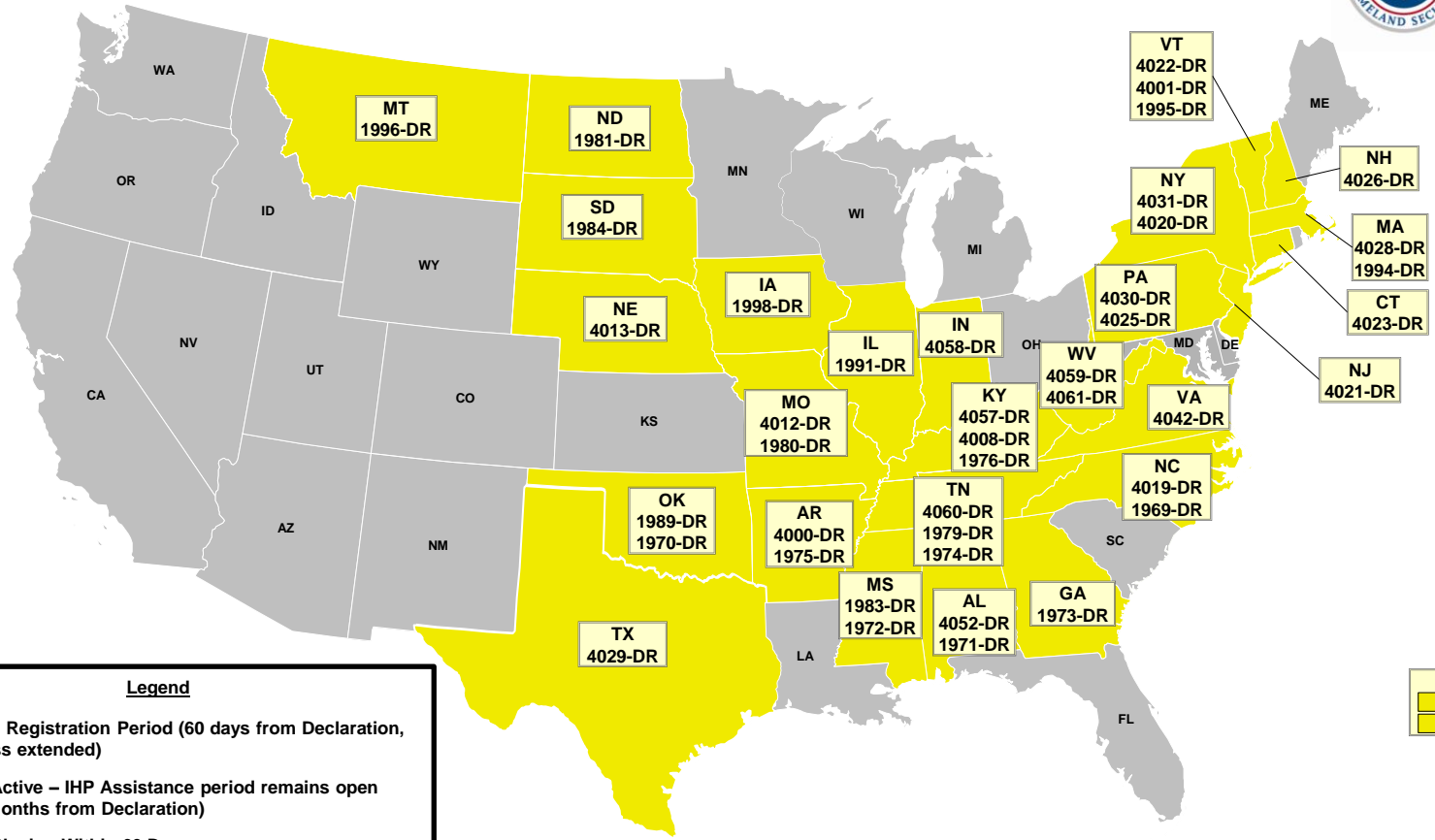
FEMA

MCOV FLEET STATUS						MCOV DISASTER SUPPORT DEPLOYMENTS					
Location	Units Assigned	Available FMC	Deployed Committed	PMC	NMC	DR-State	OPCON	En Route	Reserved	Open Request	Notes:
DC Atlanta	21	21									
DC Cumberland	10	10									
DC Ft Worth	15	15									
DC Moffett	6	6									
Holliston, MA	1	1									
Denver, CO	2	2									
Bothell, WA	2	2									
TOTAL	57	57	0	0	0	TOTAL	0	0	0	0	
Included in above totals, units en route for turn-in.											

Fully Mission Capable	57
Partially Mission Capable	0
Non-Mission Capable	0
Total Not Deployed	57

Data as of: 06/18/12 @ 0700

Active IA Disasters



of DRs

Legend

0

Open Registration Period (60 days from Declaration, unless extended)

44

IHP Active – IHP Assistance period remains open (18 Months from Declaration)

0

PR

4040-DR

4017-DR

Data as of: 06/18/12 @ 0700

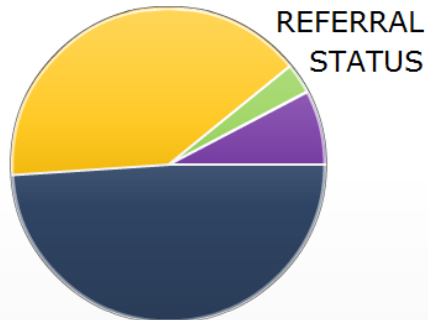
IHP Referral Status & Awards



FEMA

- Approved - 240,170
- Ineligible - 197,377
- Withdrawn - 15,273
- Pending (FEMA) - 144
- Pending (Applicant) - 37,756

Total Referrals - 490,720



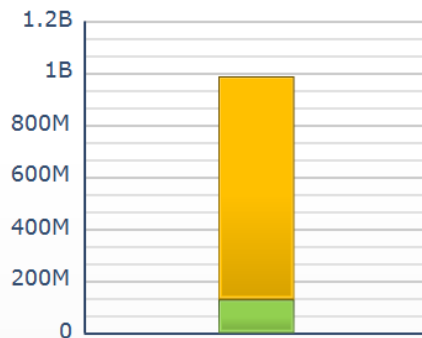
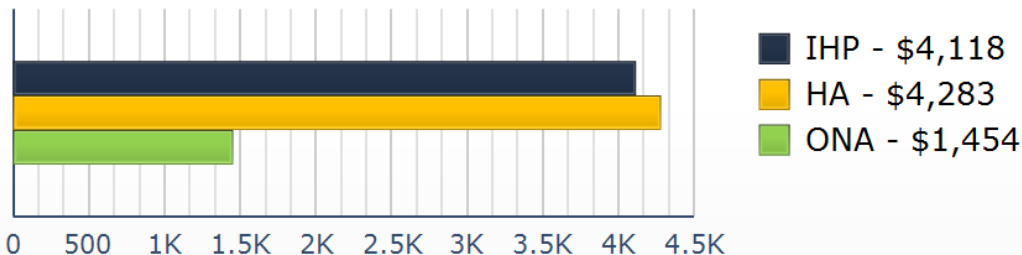
MAX GRANTS

7,523

Total Awards

\$988,588,799

Average Awards for IHP / HA / ONA



ONA - \$130,143,293 HA - \$858,445,507

Data includes the 44 IHP Active DRs

Max Grants = Applicants awarded maximum IHP (\$30,200 as of FY2012)

Data as of: 06/18/12 @ 0700

IMAT Status



FEMA

National Teams					
Team	Status	Team	Status	Team	Status
BLUE (East)		WHITE (Central)		RED (West)	
Regional Teams					
Team	Status	Team	Status	Team	Status
Region I	VT	Region V		Region IX-1	
Region II		Region VI-1		Region IX-2	
Region III		Region VI-2	OK	Region X	
Region IV-1		Region VII			
Region IV-2		Region VIII	CO		

= Available/Mission Capable
 = Available/Partially Mission Capable

= Assigned/Deployed
 = Out-of-Service

Urban Search & Rescue



INCIDENT SUPPORT TEAMS (Red-White-Blue) – Monthly On Call Rotation											
JAN	FEB	MAR	APR	MAY	JUN	JUL	AUG	SEP	OCT	NOV	DEC
WEST				CENTRAL				EAST			
Team	Status			Team	Status			Team	Status		
CA-TF1	Available			AZ-TF1	Available			FL-TF1	Available		
CA-TF2	Available			CO-TF1	Available			FL-TF2	Available		
CA-TF3	Available			IN-TF1	Available			MA-TF1	Available		
CA-TF4	Available			MO-TF1	Available			MD-TF1	Available		
CA-TF5	Available			NE-TF1	Available			NY-TF1	Available		
CA-TF6	Available			NM-TF1	Available			PA-TF1	Conditionally Available		
CA-TF7	Available			NV-TF1	Available			VA-TF1	Available		
CA-TF8	Available			TN-TF1	Available			VA-TF2	Available		
WA-TF1	Available			TX-TF1	Available			OH-TF1	Available		
				UT-TF1	Available						

= Available/Mission Capable

= Available/Partially Mission Capable

= Assigned/Deployed

= Out-of-Service

RRCC / Regional Watch Center Status



FEMA

Region	RRCC	Regional Watch Center
I	Watch/Steady State	Maynard MOC (24/7)
II	Watch/Steady State	24/7
III	Watch/Steady State	24/7
IV	Watch/Steady State	24/7
V	Watch/Steady State	24/7
VI	Watch/Steady State	Denton MOC (24/7)
VII	Watch/Steady State	24/7
VIII	Level III (8:00 – 6:00 p.m. MDT)	Denver MOC (24/7)
IX	Watch/Steady State	24/7
X	Watch/Steady State	Bothell MOC (24/7)

Exercise Highlights, as of June 15, 2012



TED-EX Exercise Highlights (60 day forecast)

Date	Exercise	Event	Capability Focus	Target Audience/ FEMA Participation	Location
June TBD	NLE 12	Exercise #4 Conduct	Cyber Security, Planning (Continuity)	All FEMA components	Multiple
6/24-6/25	VR 13	MSEL-5	WMD Response, Incident Mgt and Support	IMAT-B, R-VII IMAT	San Antonio, TX
6/26-6/28	APHIS FMDFE	Conduct	Animal Disease Emergency	NRCS (SimCell only)	College Park, MD
7/17-7/18	Amber Waves	TTX Conduct	WMD Response, Incident Mgt and Support	R-VII N-IMAT	Kansas City, MO
7/19	ESFLG	TTX Conduct	Hurricane	ESFLG	FEMA HQ
7/26	APHIS FMDFE	AAC	Animal Disease Emergency	NRCS (SimCell only)	NCR(TBD)
7/26-8/3	VR 13	Execution Period 1	WMD Response, Incident Mgt and Support	N-IMAT, R V IMAT	Camp Atterbury, IN
8/6-8/10	VR 13	Execution Period 2	WMD Response, Incident Mgt and Support	N-IMAT, R VII	Camp Atterbury, IN

National Team Status

Team/Status	Current Location	Remarks
National Watch Center	Washington, DC	Watch/Steady State
NRCC	Washington, DC	Not Activated
HLT	Miami, FL	Activated
DEST	Washington, DC	Not Activated
Mission Capable	Partially Mission Capable	Not Mission Capable



FEMA

FEMA's mission is to support our citizens and first responders to ensure that as a nation we work together to build, sustain, and improve our capability to prepare for, protect against, respond to, recover from, and mitigate all hazards.