



# **FEMA**

## **Daily Operations Briefing**

**May 21, 2012**

**As of 8:30 a.m. EDT**

# Significant Activity: May 18 - 21



## **Significant Events:**

- Wildfires – Arizona
- Severe Weather – Kansas and Nebraska

## **Tropical Activity:**

- Atlantic: Tropical Storm Alberto
- Eastern Pacific: Tropical Depression Two-E
- Western Pacific: Tropical Depression 03W

## **Significant Weather:**

- Rain & thunderstorms – Northern Rockies, Southern Plains to Central Appalachians
- Critical Fire Weather Areas: CA, NV
- Red Flag Warnings: AK, CA, NV, UT, AZ, and FL
- Space Weather: No space weather storms observed or predicted

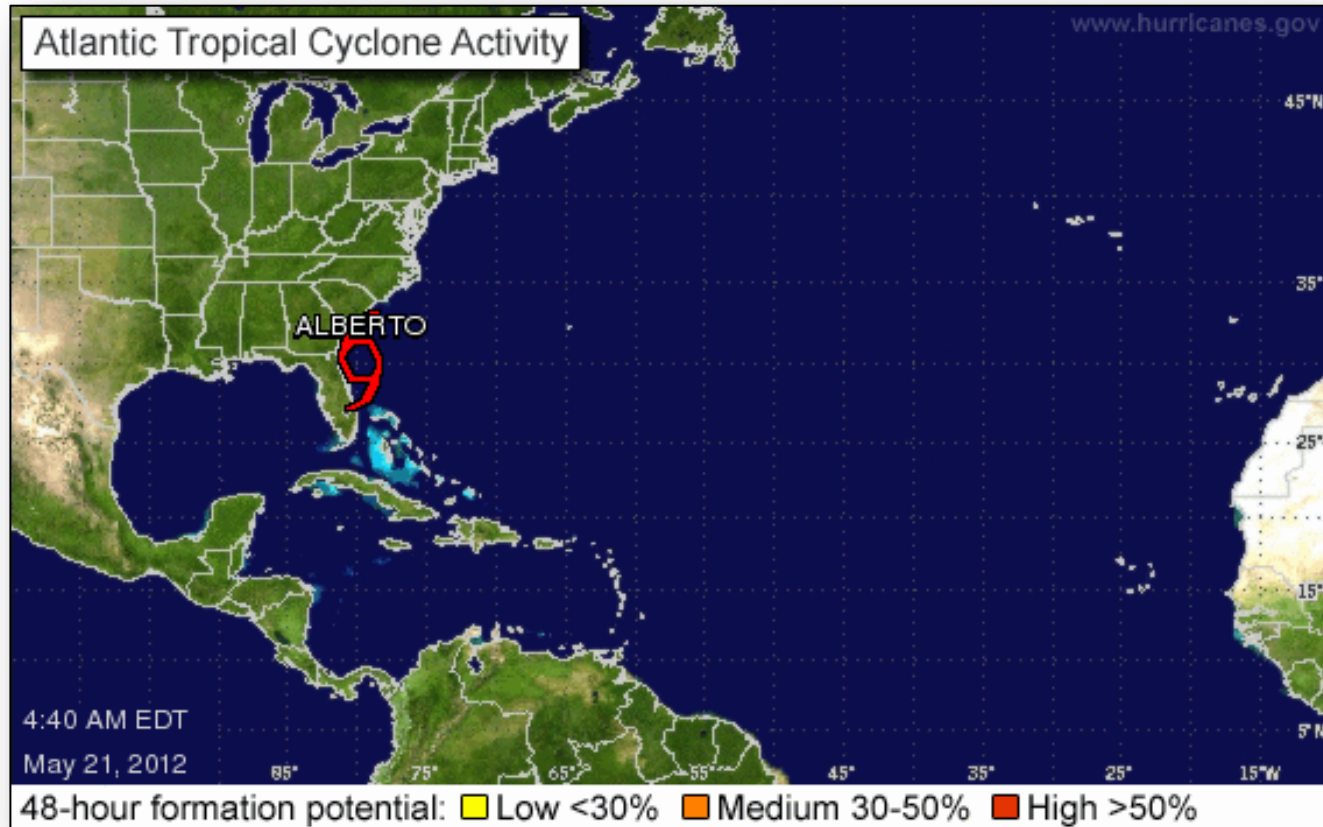
**Earthquake Activity:** No significant activity

**Disaster Declaration Activity:** None

# Atlantic – Tropical Outlook



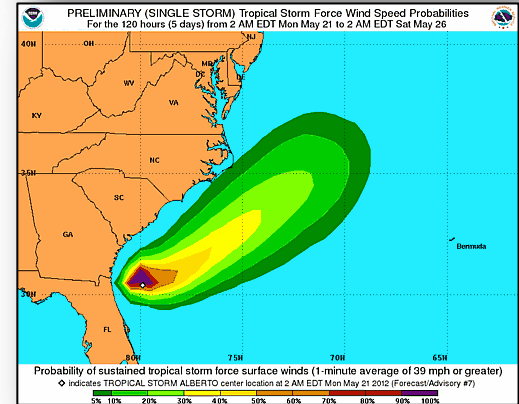
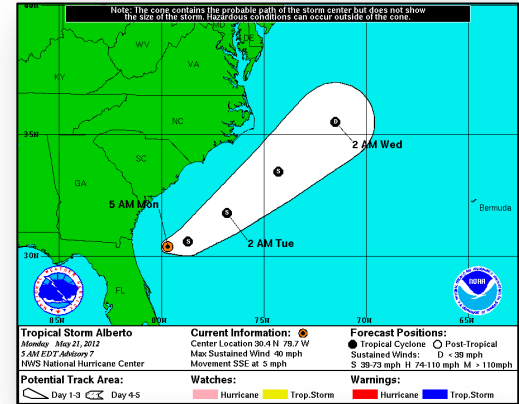
FEMA



# Atlantic – Tropical Storm Alberto

As of 5:00 a.m. EDT

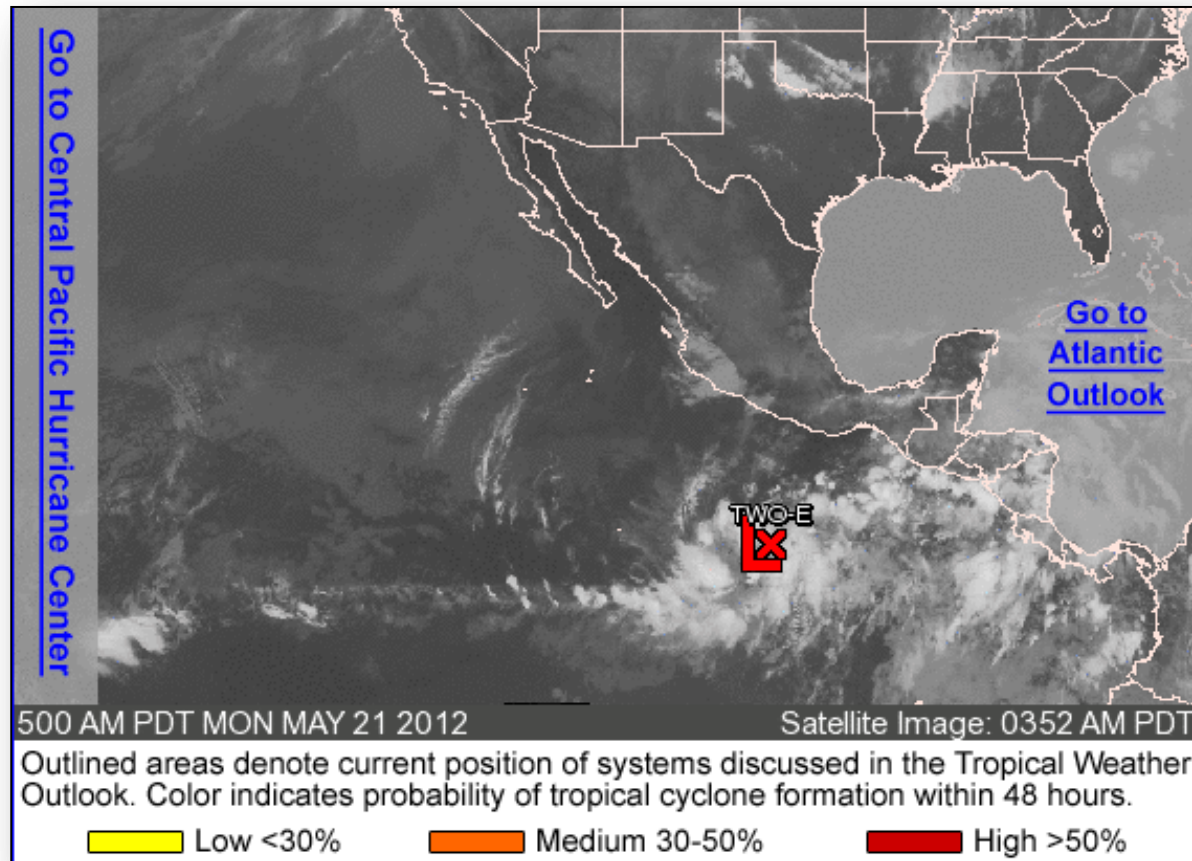
- TS Alberto was located:
  - 100 miles east-northeast of St. Augustine FL;
  - 165 miles south of Charleston, SC
- Moving SSE near 5 mph; northeastward motion increase in forward speed tonight thru Tuesday
- **On this track, the center of Alberto is expected to stay offshore of the Georgia and Carolina coasts.**
- Max sustained winds are 40 mph w/higher gusts; little change in strength is forecast the next 48 hours
- TS-force winds extend outward up to 60 miles
- All Tropical Storm Watches have been discontinued—there are no coastal watches or warnings in effect



# Eastern Pacific – Tropical Outlook



FEMA



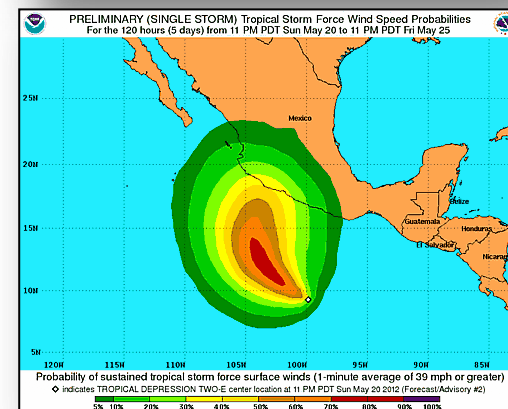
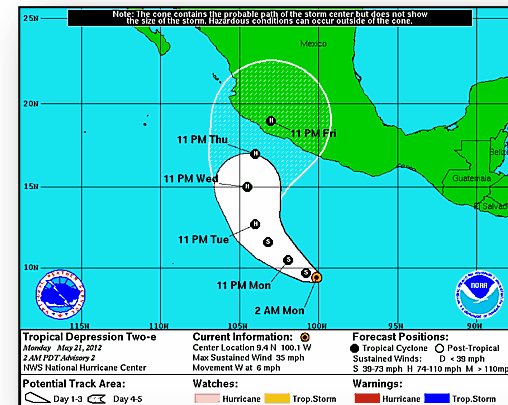
# Eastern Pacific –Tropical Depression Two-E



FEMA

As of 5:00 a.m. EDT

- TD Two-E is located
  - 520 miles south of Acapulco, Mexico.
- Moving west near 6 mph
- West-Northwest and northwest motion with increase in forward speed expected by tonight
- Maximum sustained winds of 35 mph with higher gust
- Strengthening is forecast during the next 48 hours and depression is forecast to become a tropical storm later today

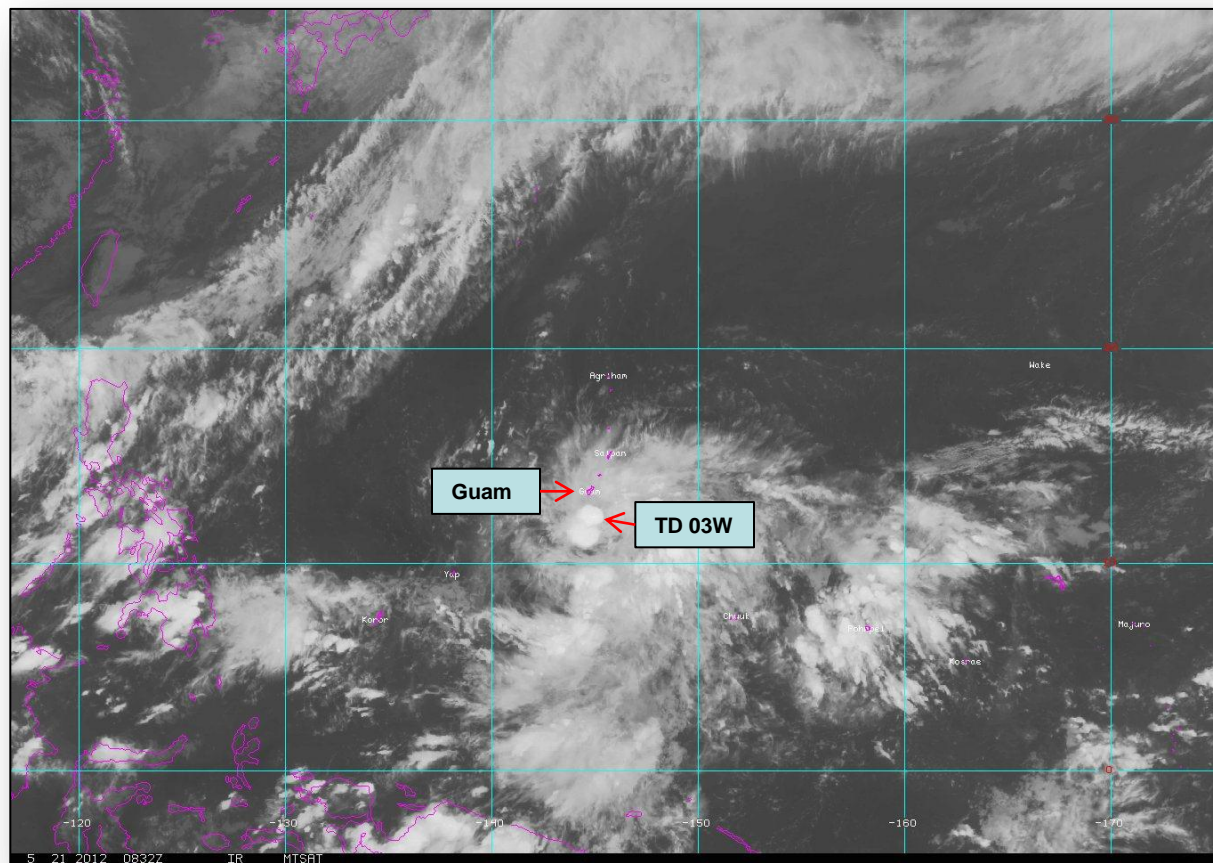




# Western Pacific – Tropical Outlook



FEMA



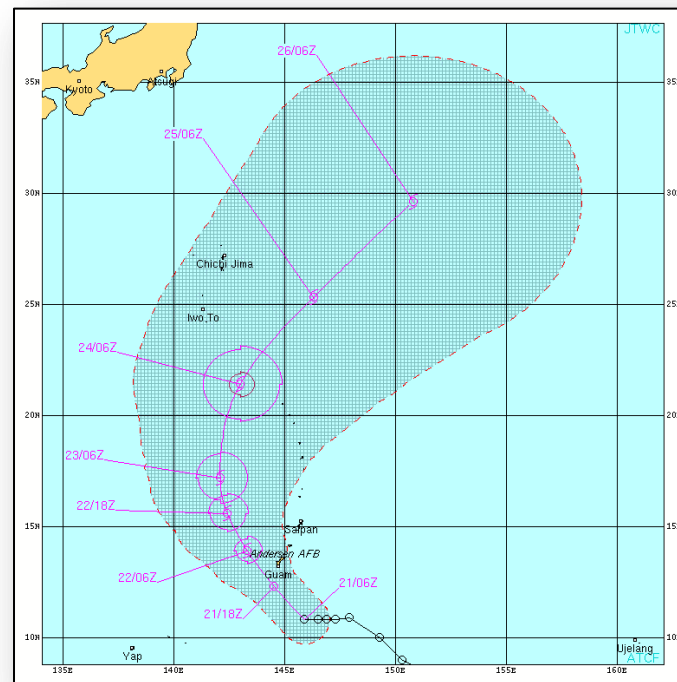
# Western Pacific – Tropical Depression 03W



FEMA

As of 5:00 a.m. EDT

- TD 03W is located
  - 185 miles south-southeast of Anderson AFB, Guam
- Moving west near 7 mph
- Should pass just south of Guam during the next 12-18 hours and then track generally northwestward
- Primarily a rain event for Guam

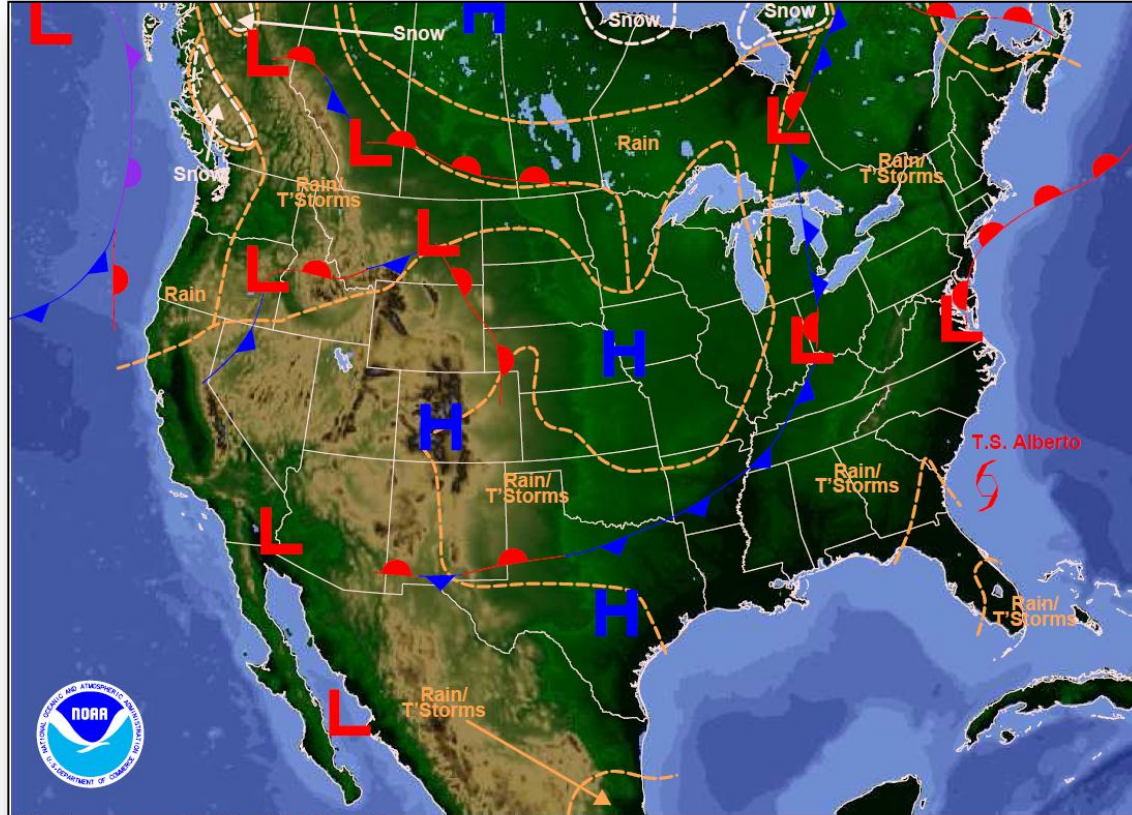




# National Weather Forecast



FEMA

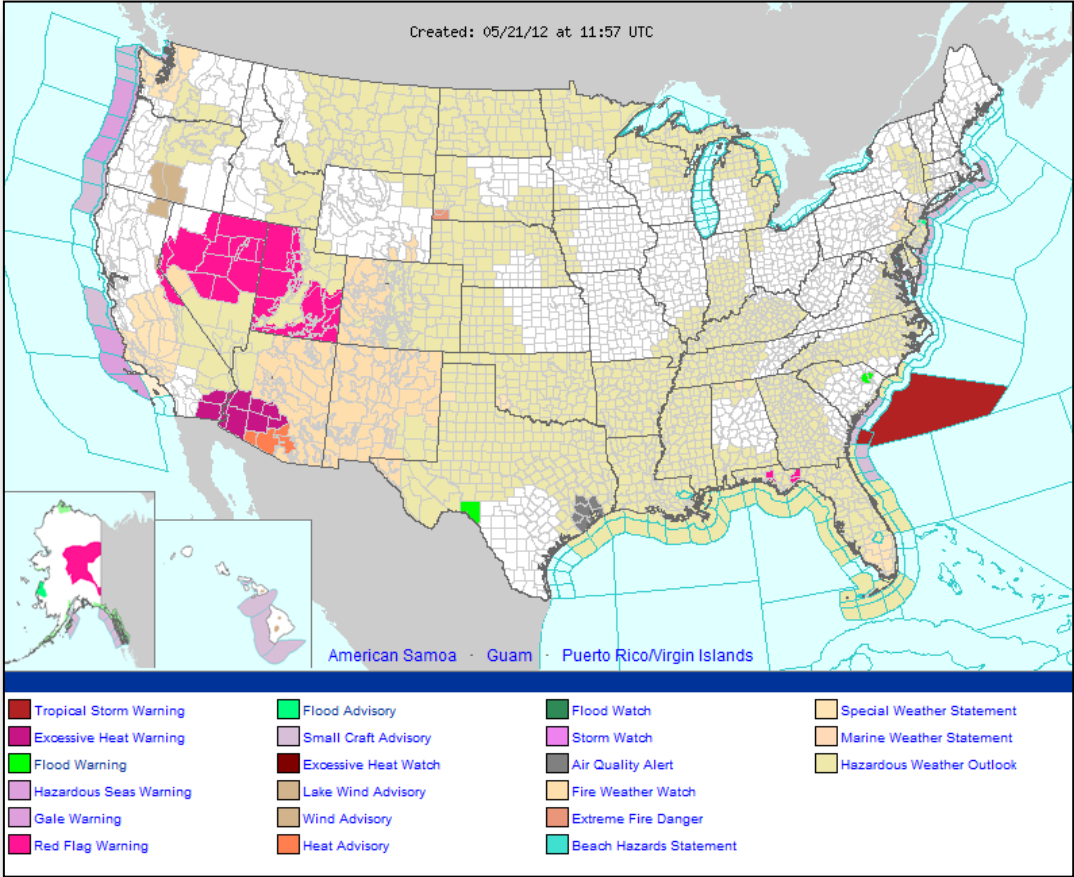


Weather Forecast for Mon, May 21, 2012, issued 4:00 AM EDT  
DOC/NOAA/NWS/NCEP/Hydrometeorological Prediction Center  
Prepared by Fanning based on HPC, SPC, and NHC forecasts

# Active Watches/Warnings



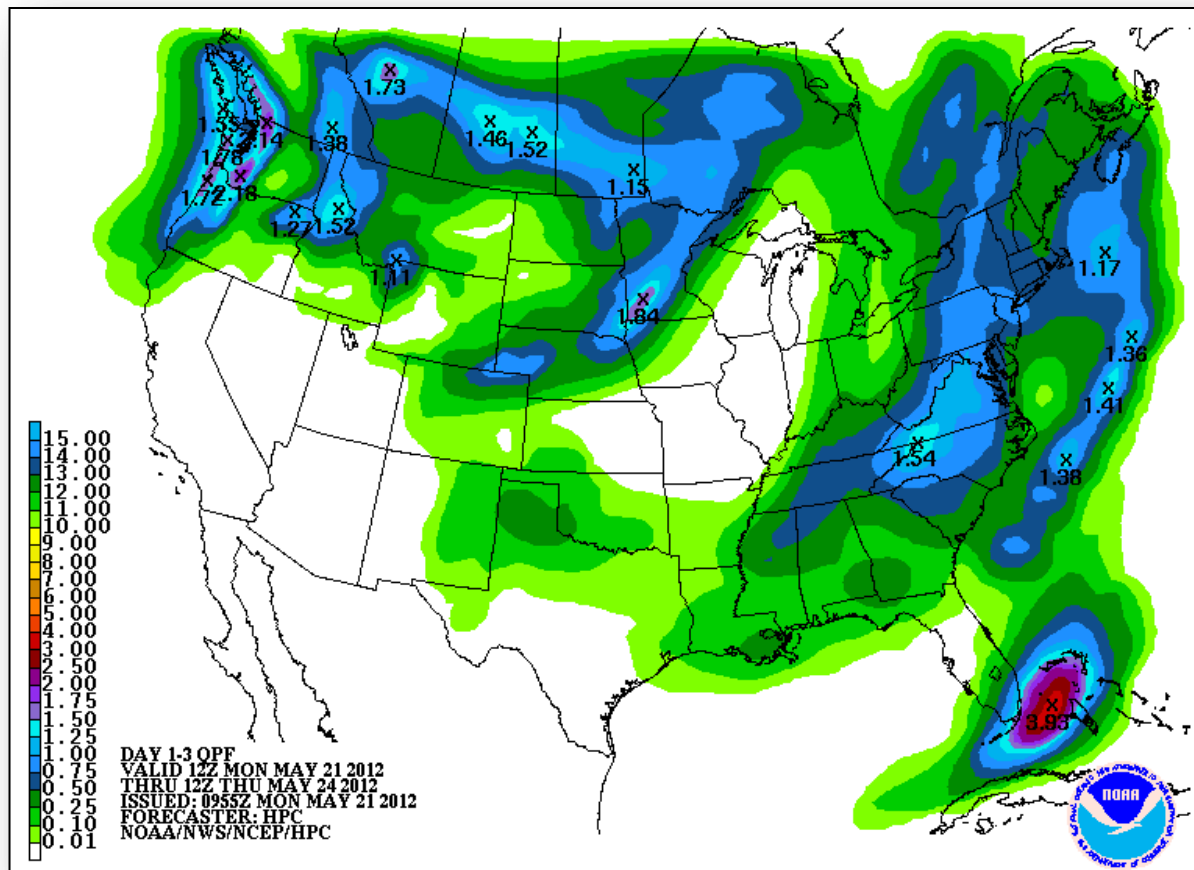
FEMA



# Precipitation Forecast 1 – 3 Day



FEMA

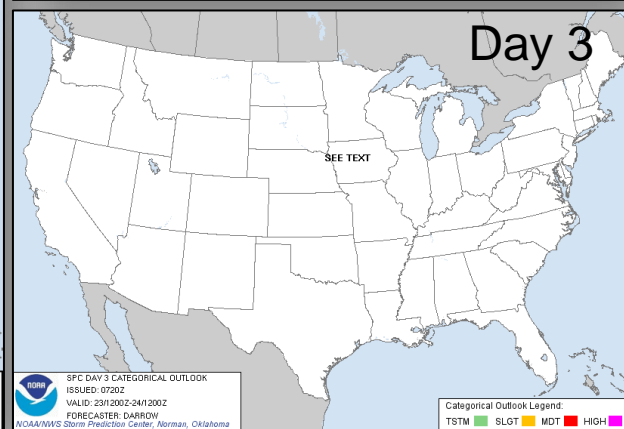
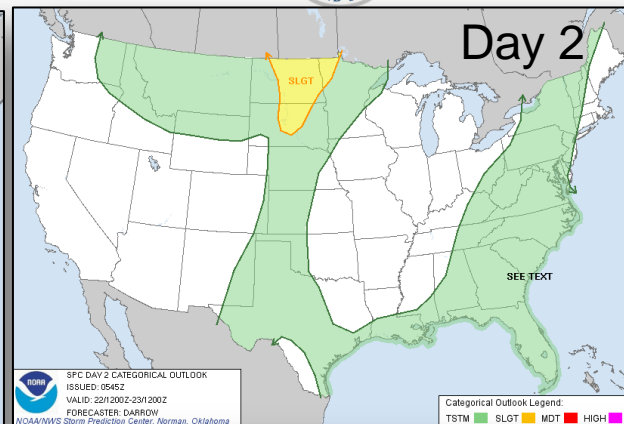
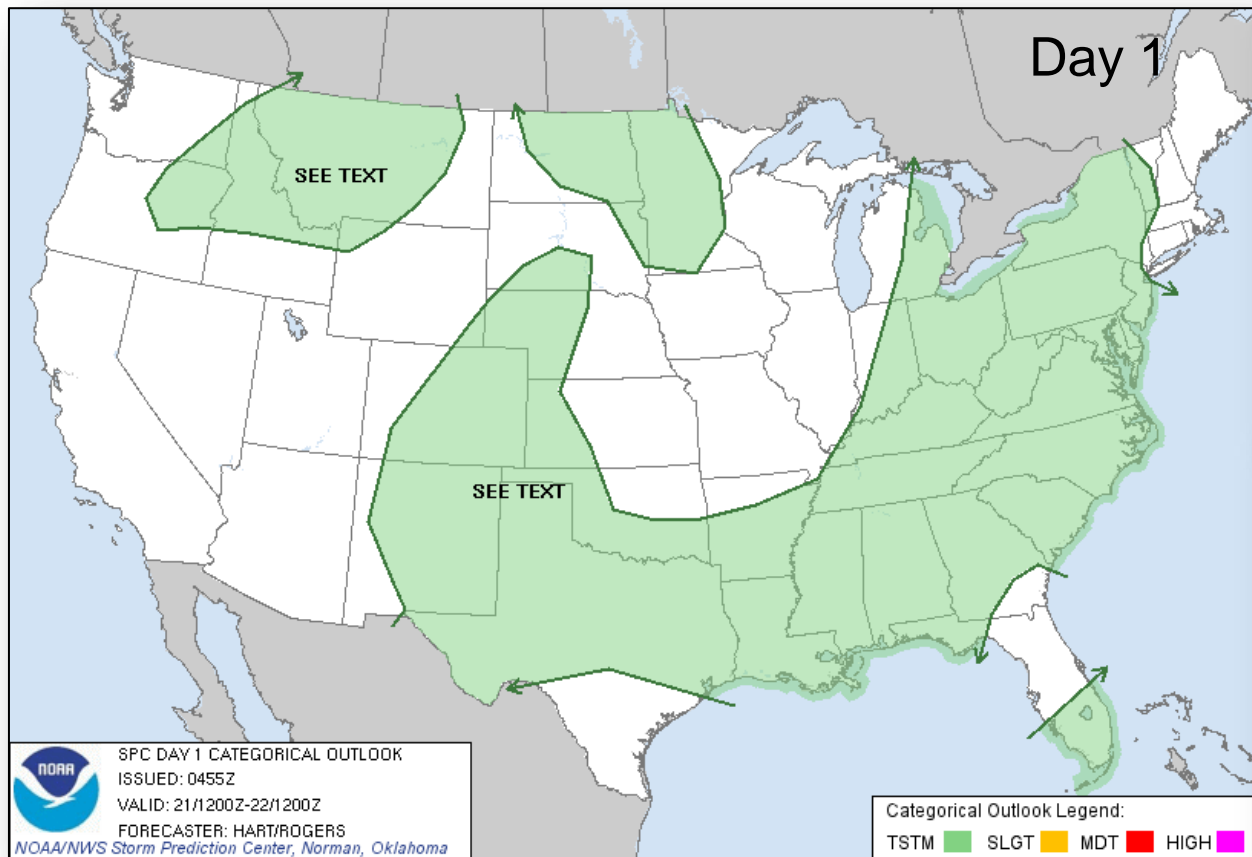




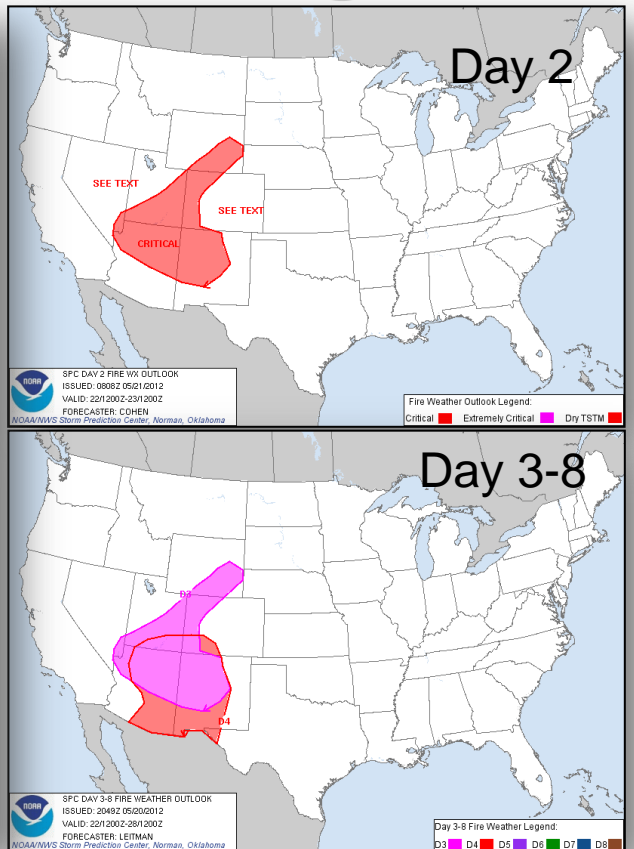
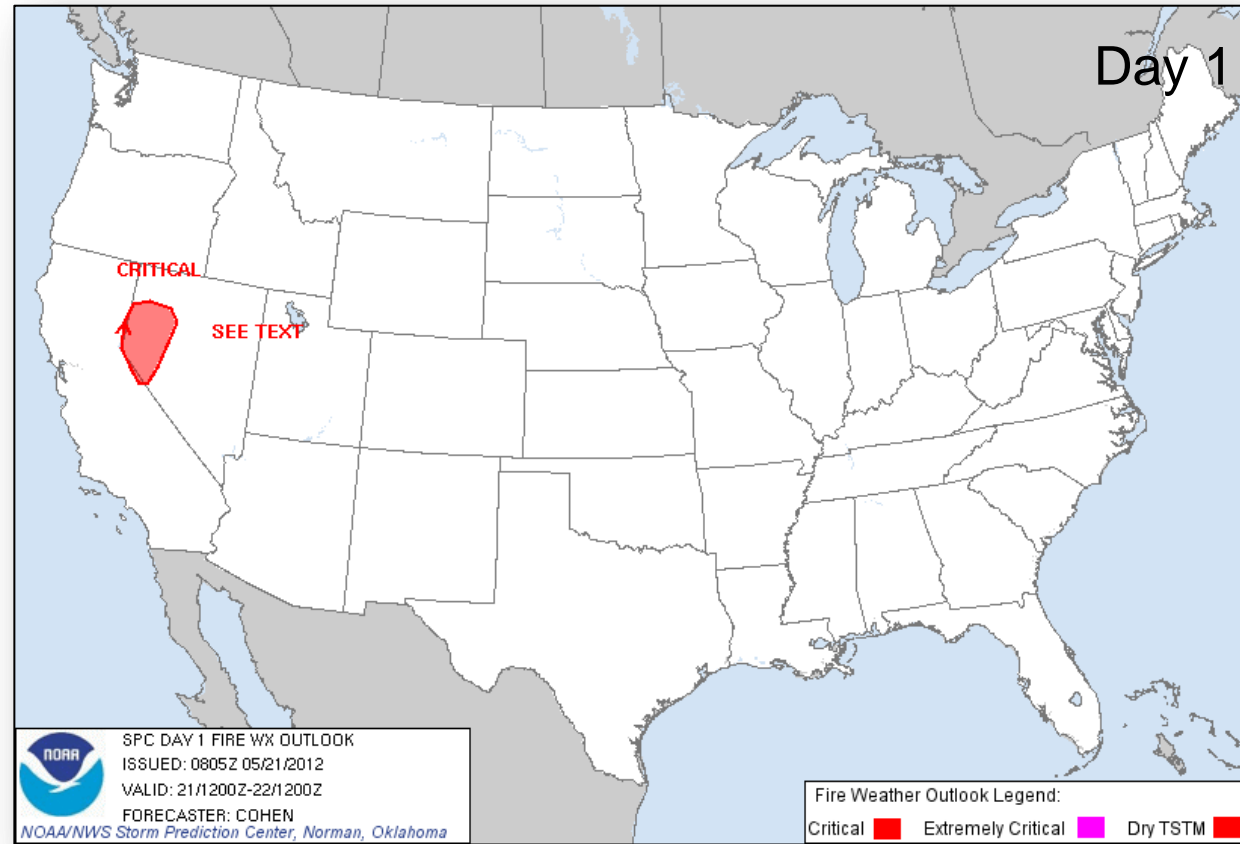
# River Flood Outlook - 7 Day



# Convective Outlook Days 1 – 3



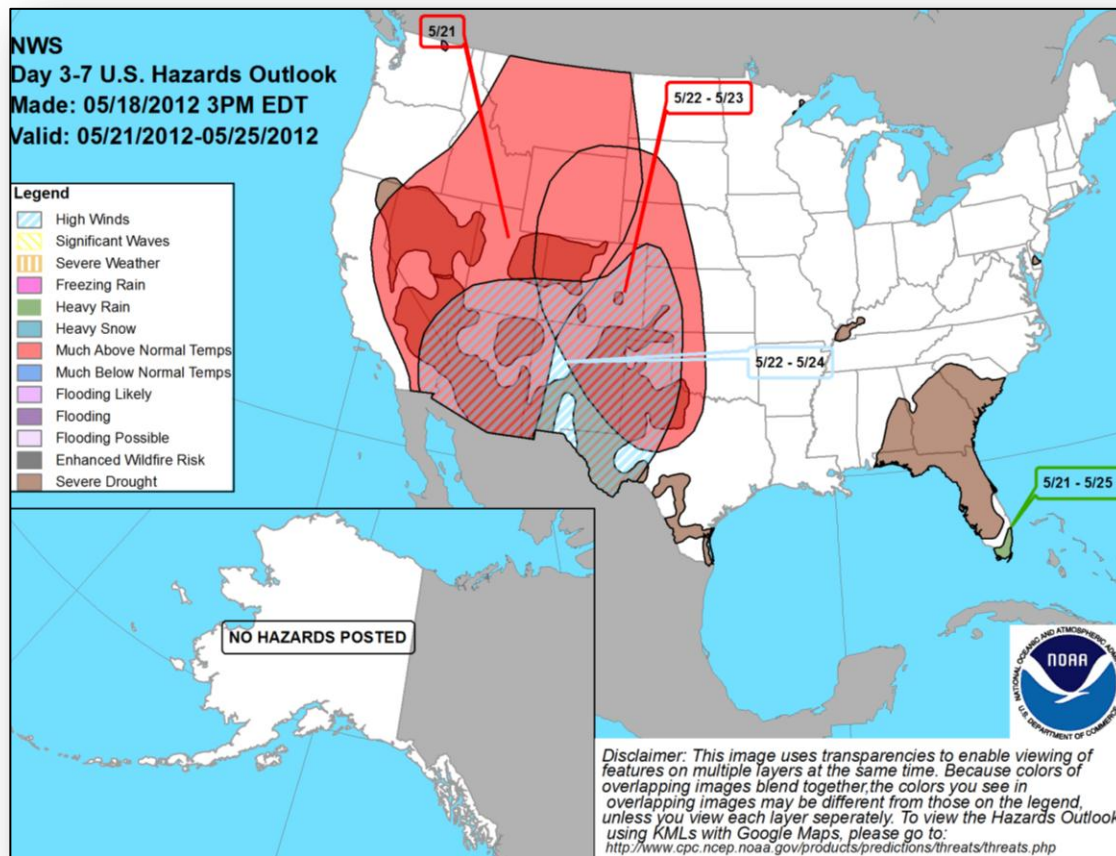
# Critical Fire Weather Areas Days 1 – 8



# Hazard Outlook: May 21 – 25



FEMA





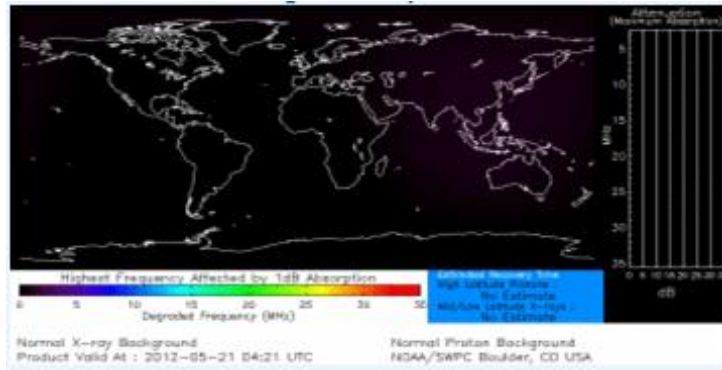
# Space Weather



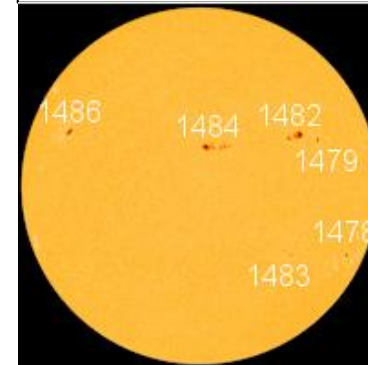
FEMA

NOAA Scales Activity Range 1 (minor) to 5 (extreme)	Past 24 Hours	Current	Next 24 Hours
Geomagnetic Storms	None	None	None
Solar Radiation Storms	None	None	None
Radio Blackouts	None	None	None
Space Weather	None	None	None

## HF Communications Impact



## Sunspot Activity



# 2012 NATO Summit - Update

## **Situation: May 20-21, 2012 – NATO Summit (Chicago, IL)**

- The 2012 NATO summit continues relatively uneventfully.
  - News media are reporting various protests and threats to the event.
  - Threat Monitoring Team continues to monitor open source and classified reporting.
- Venue: McCormick Center in Chicago, IL

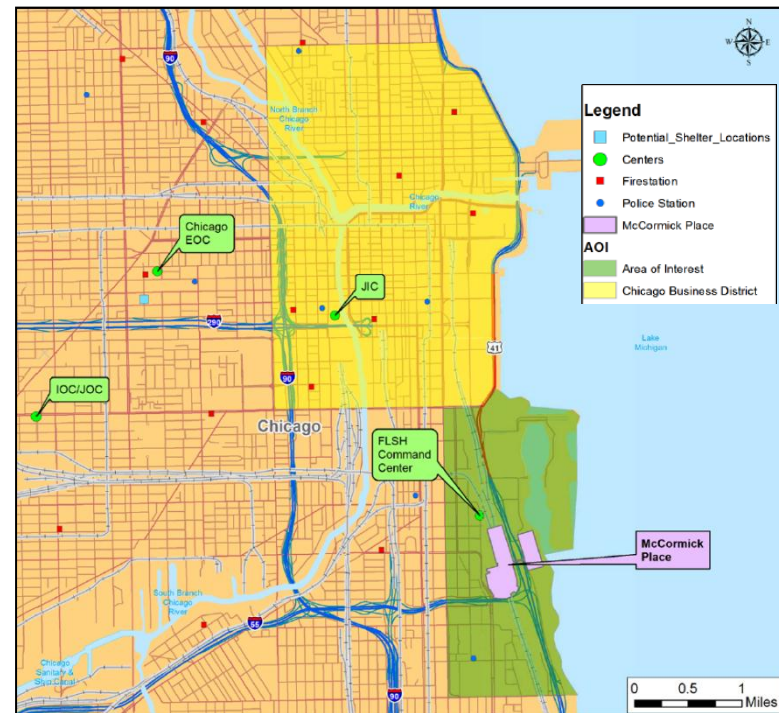
## **FEMA HQ:**

- National Watch Center maintaining 24/7 situational awareness
- NRCS, all ESFs, and the National IMAT-White are on alert
- FEMA HQ LNO identified and staffing the NJTTF

## **FEMA Region V:**

- RRCC activated to Level II with select ESFs
- Two IMAT teams (Alpha and Bravo) activated
- All members of Regional Support Team are on alert
- 12 FEMA LNOs deployed:
  - MACC (4), FBI JOC & IOC, USSS JIC, and Chicago EOC (2 ea)
  - LNOs are conducting 24/7 operations until released

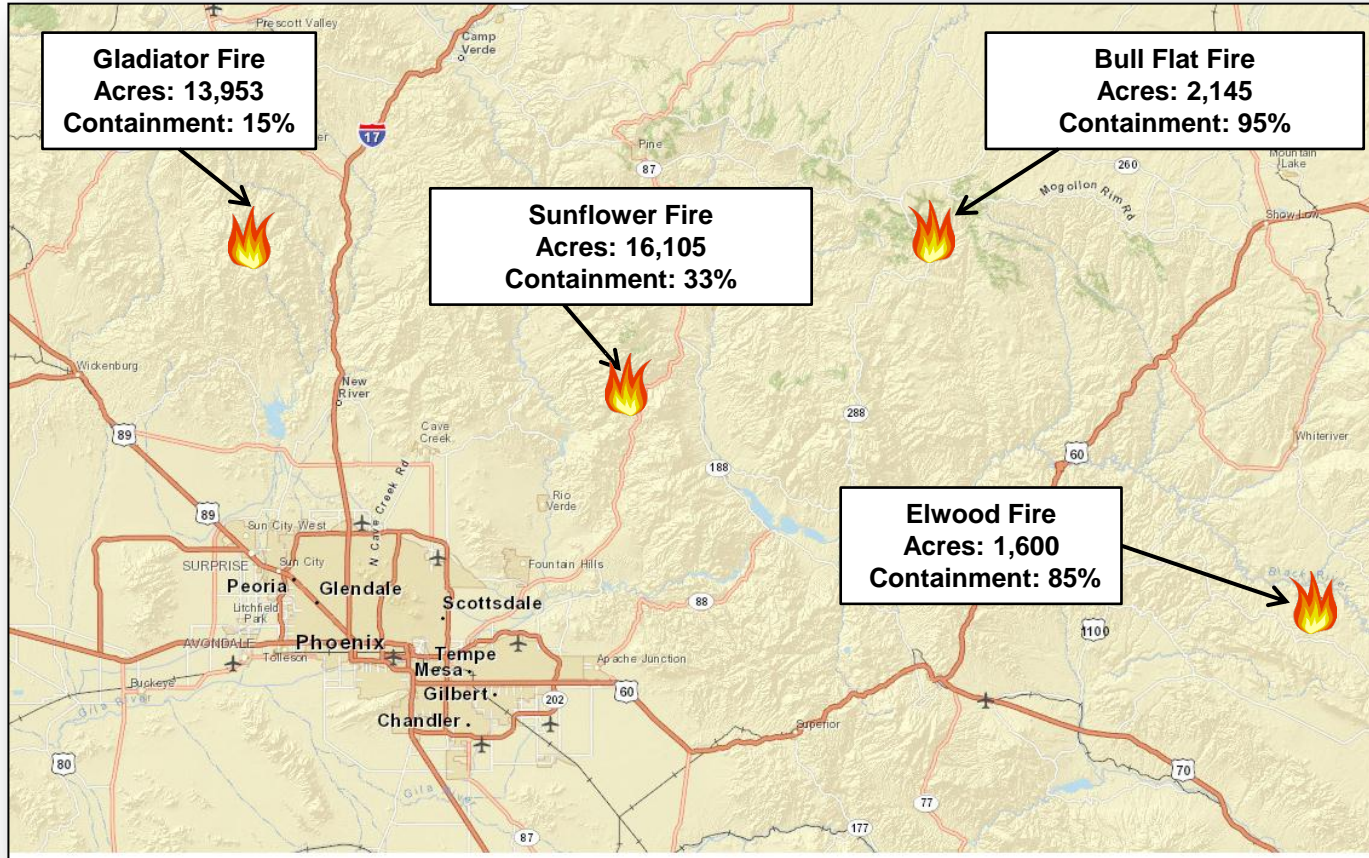
**MERS:** Denver MERS Detachment on-site at State FOB (*not on map*)



# Arizona Wildfires



FEMA



# Gladiator Fire, Arizona



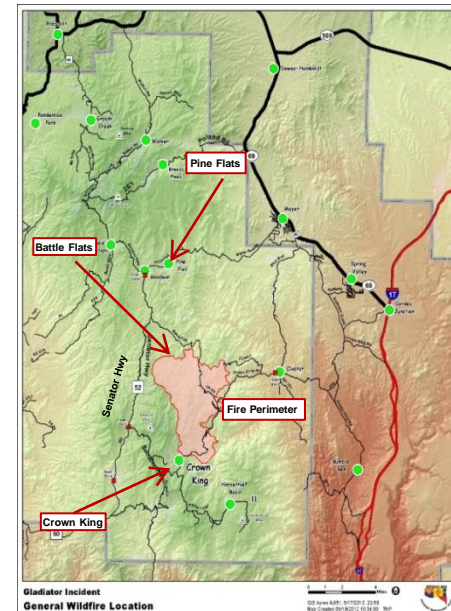
Fire Name	Location	Acres burned	% Contained	Est. Full Containment	FMAG Approved	Structures Lost / Threatened	Fatalities / Injuries
Gladiator Fire	Prescott National Forest (Yavapai Co.)	13,953 (+1,055)	15%(+3%)	TBD	None	4 structures lost/ 467 structures threatened	0 / 6

## Current Situation

- At risk: Community of Crown King, structures in Battle Flat, Pine Flats, and Turkey Creek areas, and communications sites, power lines and historic sites within the Forest.
- A hotter, drier trend with higher winds is expected over the next few days.

## Response

- ▲ Total personnel involved in fire fight: 1,127, including Type I IMT
- Mandatory evacuations remain in effect for Crown King and the Pine Flats, Turkey Creek & Battle Flats areas.
  - ▲ Approx. 315 homes affected—most are vacation homes in isolated areas.
    - ARC Reception & Care Center open in Mayer – daytime operations only.
- Yavapai County EOC remains activated; AZ EOC remains at normal ops
- FEMA Region IX RRCC remains at Watch/Steady State and monitoring





# Hewlett Fire, Colorado- FINAL



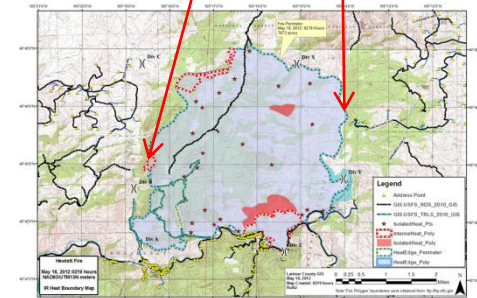
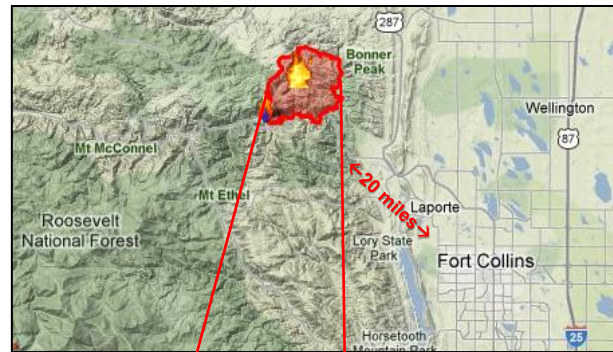
Fire Name	Location	Acres burned	% Contained	Est. Full Containment	FMAG Approved	Structures Lost / Threatened	Fatalities / Injuries
Hewlett Fire	Larimer County	▲ 7,485	▲ 87%	5/20/2012	None	0 structures lost/ 150 structures threatened	0 / 2

## Current Situation

- ▲ Firefighters made good progress on Saturday—little to no fire spread.
- ▲ Very little active fire due to wet fuel conditions over the fire area.
- ▲ Fire has been burning primarily on Federal and State property; an estimated 1,322 acres is on private land.

## Response:

- On May 18<sup>th</sup>, the Governor declared a Disaster Emergency
- All evacuations were lifted on Friday evening (May 18<sup>th</sup>)
- ▲ Total personnel supporting the firefight: 582
- ▲ All ARC shelters are closed
- FEMA Region VIII and Colorado EOC remain at normal operations



# Severe Weather – Kansas & Nebraska



## Situation

- Severe weather moved across the Central Plains on May 19<sup>th</sup>
- 25 unconfirmed tornadoes, primarily in KS

## Kansas

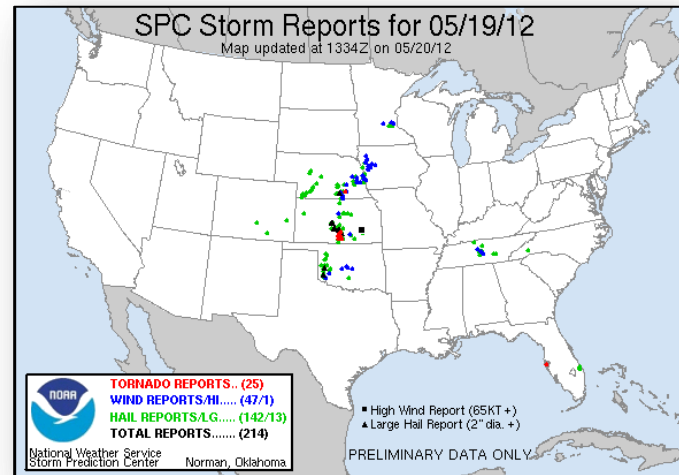
- Damages reported across two counties—Harper & Kingman
- Downed trees, power lines, & isolated major damages to homes
- NWS survey teams assessing damages on Sunday.
- No injuries or significant power outages reported.

## Nebraska

- Minor damages reported across three counties—Douglas, Sanders & Washington
- Downed trees and power lines
- No injuries, major damages or significant power outages reported

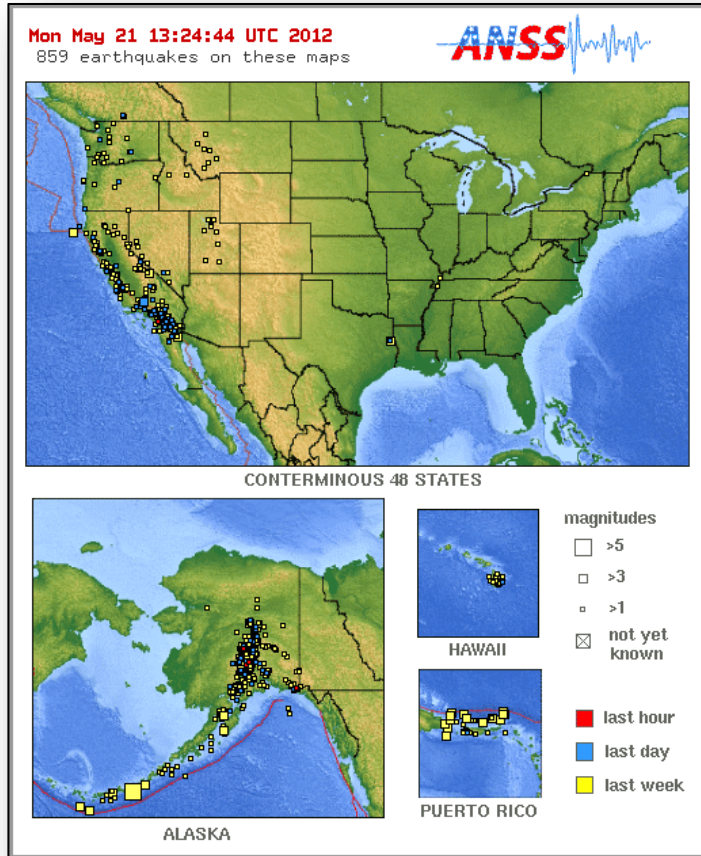
## State / Regional Response

- No shelters are open
- State EOCs remained at normal operations
- FEMA Region VII remained at Watch/Steady State
- No requests for FEMA assistance



# Significant Earthquake Activity – U.S.

- No significant earthquake activity





# Significant Earthquake Activity - International



FEMA



## M 6.0 Earthquake - Northern Italy

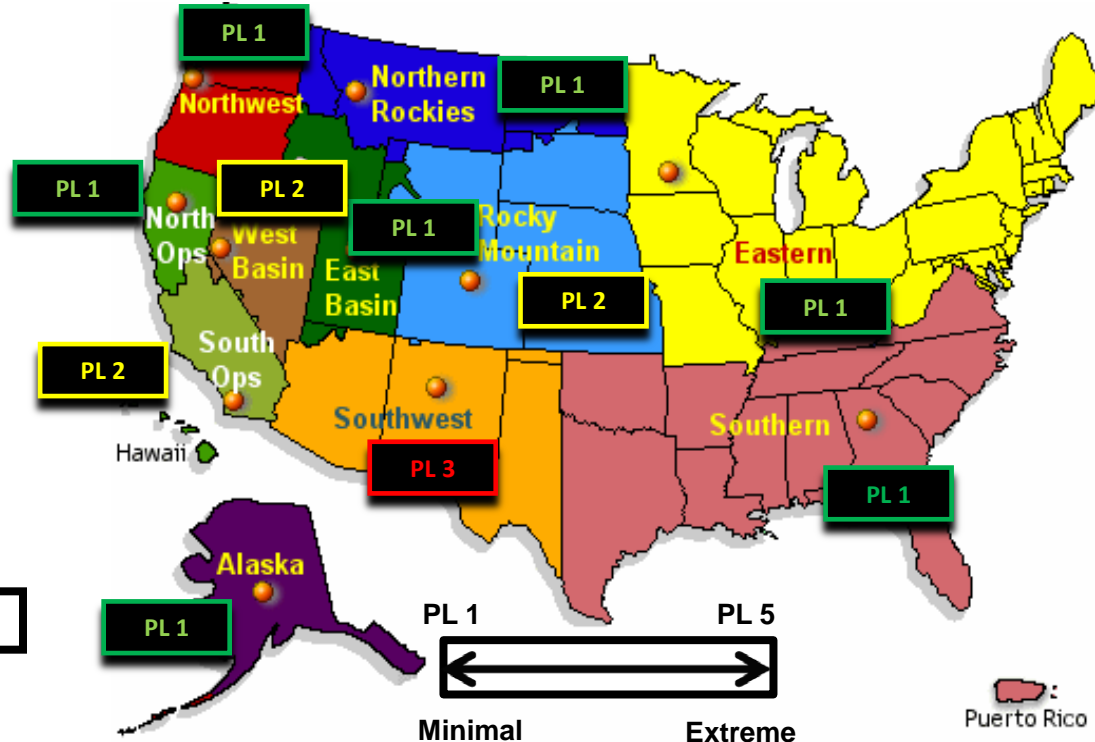
- May 19, 2012 at 10:03 p.m. EDT
  - 22 miles NNW of Bologna, Italy
  - 210 miles NNW of Rome, Italy
  - Depth: 3.2 miles
- M 5.1 aftershock occurred at depth of 6.2 miles
- USGS issued an updated PAGER alert:
  - **ORANGE** for economic losses: Significant damage is likely and disaster is potentially widespread.
  - **YELLOW** for shaking-related fatalities: Some casualties are possible.
- Media reports at least 6 fatalities, 50 injuries and widespread damage to buildings and historic sites
- US&R monitoring situation; no requests for FEMA or International assistance

# U.S. Wildland Fire Preparedness Levels



## National Preparedness Level: 2

Several Geographic Areas are experiencing high to extreme fire danger. Wild land fire activity is increasing, and large fires are occurring in one (1) or more Geographic Areas. Minimal mobilization of resources from other Geographic Areas is occurring. There is moderate commitment of National Resources with the potential to mobilize additional resources from other Geographic Areas.

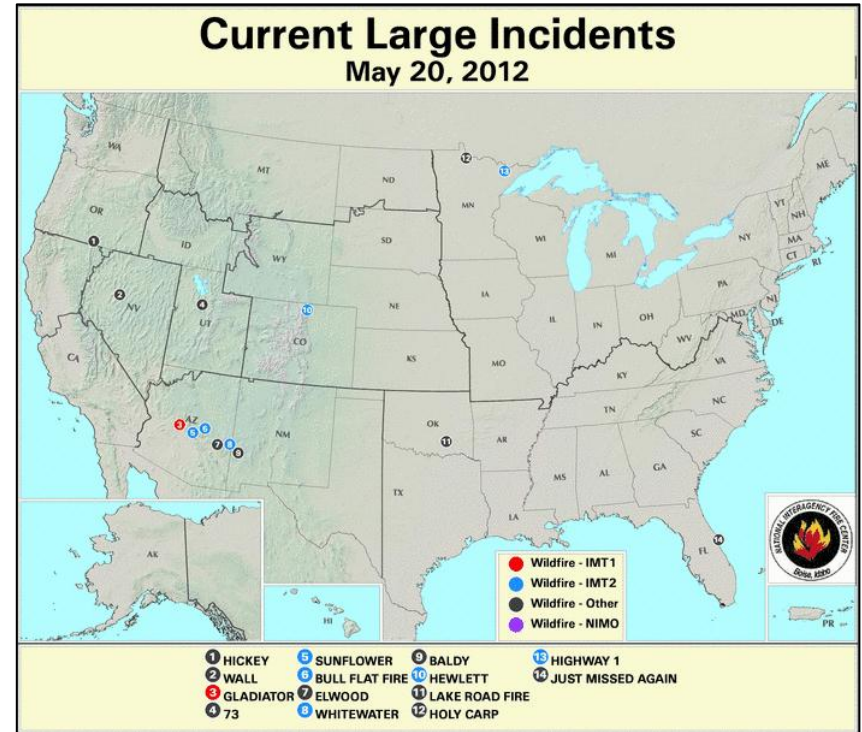


As of May 20, 2012

# National Fire Activity

## May 20, 2012:

- National Preparedness Level: 2
- Initial Attack Activity: Light (66 new fires)
- New Large Fires: 0
- Large Fires Contained: 2
- Uncontained Large Fires: 11
- Type 1 IMT(s) Committed: 1
- Type 2 IMT(s) Committed: 5
- States Affected: AZ, NM, CO, MN, FL, OK, OR, NV, UT



# Disaster Requests & Declarations



Declaration Requests in Process		Requests APPROVED (since last report)	Requests DENIED (since last report)
1	Date Requested	0	0
KS – DR Severe Storms & Tornadoes April 14-15, 2012	May 10, 2012		

# FMAG Requests and Declarations



Action (since last report)	Total	FMAG No. and State
Requests DENIED	0	
Requests APPROVED	0	
Requests Expected Next 24 Hours	0	None as of 1200 5/20/12

As of May 18, 2012	2012	2011*
FMAGs Approved	3	50
FMAGs Denied	3	14
* Cumulative FMAG figures as of this date in 2011		

# FCO Cadre Member Status



Deployed	Detailed	Available	Not Available	Total
11	3	18	5	37

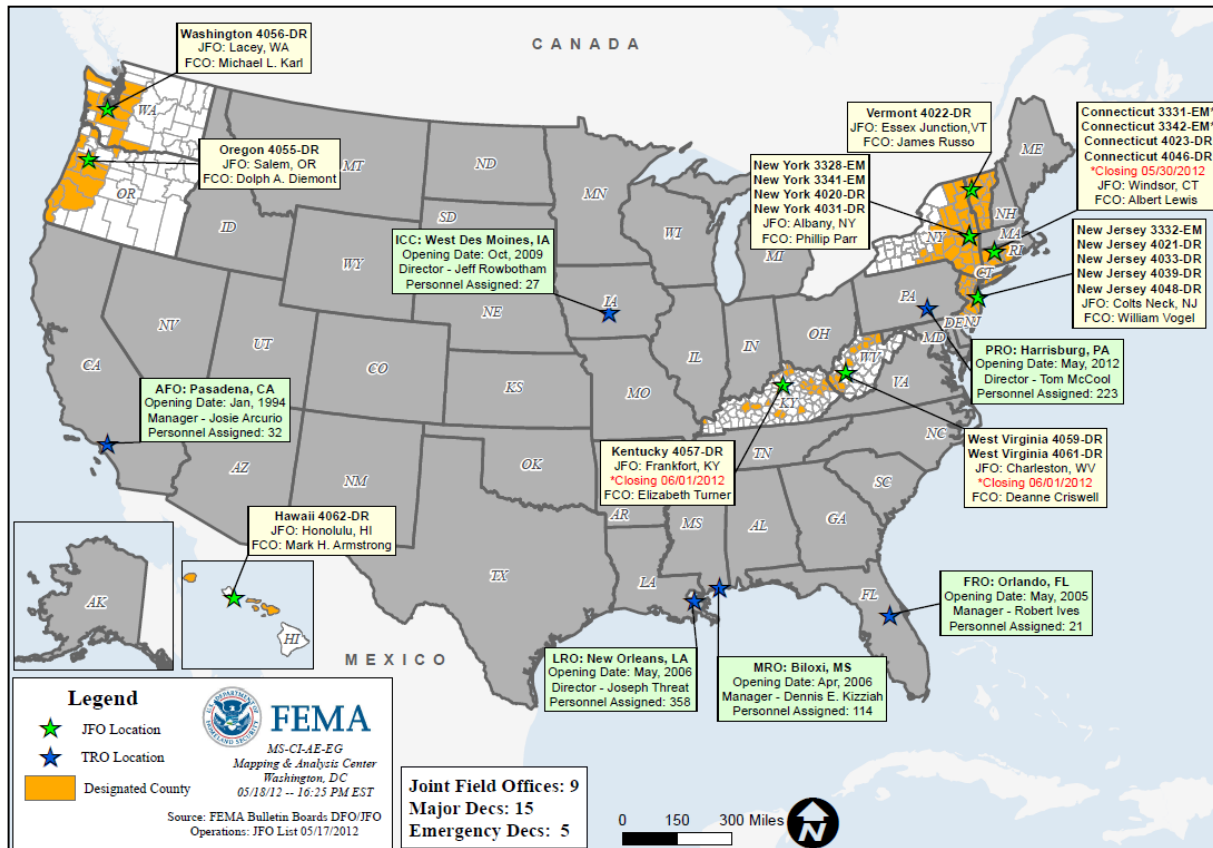
Total Available	Type 1	Type 2	Type 3	Type 4
21*	3*	9	7	2

**\* All Type 1 FCOs are available unless deployed to a Level 1 event**

# Open Field Offices as of May 21, 2012



FEMA





# MCOV Fleet / Deployment Status



FEMA

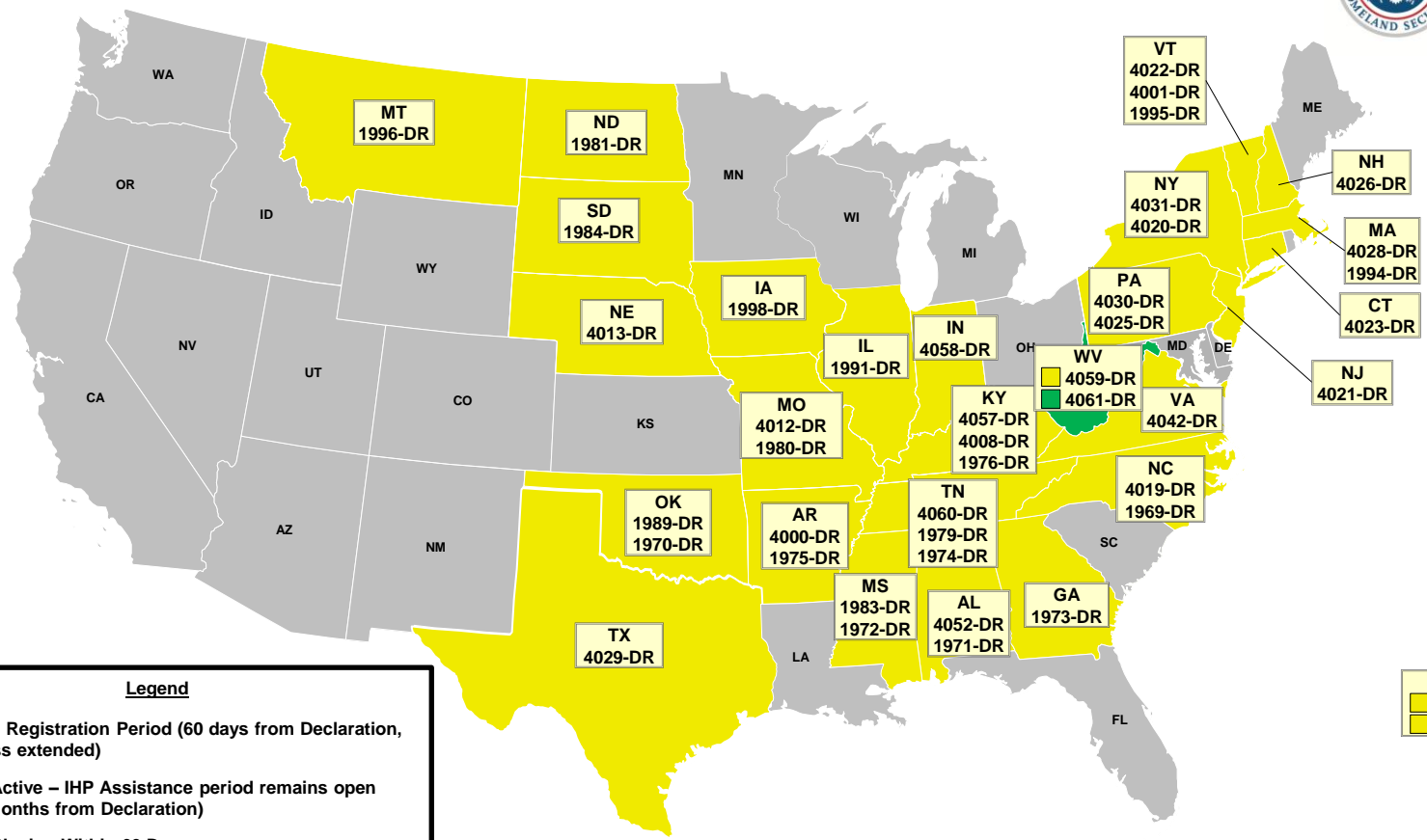
MCOV FLEET STATUS					
Location	Units Assigned	Available FMC	Deployed Committed	PMC	NMC
DC Atlanta	21	21			
DC Cumberland	13	10			3
DC Ft Worth	15	15			
DC Moffett	6	6			
Holliston, MA	1	1			
Denver, CO	2	2			
Bothell, WA	2	2			
<b>TOTAL</b>	<b>60</b>	<b>57</b>	<b>0</b>	<b>0</b>	<b>3</b>
Included in above totals, units en route for turn-in.					

MCOV DISASTER SUPPORT DEPLOYMENTS					
DR-State	OPCON	En Route	Reserved	Open Request	Notes:
<b>TOTAL</b>	<b>0</b>	<b>0</b>	<b>0</b>	<b>0</b>	

Fully Mission Capable	57
Partially Mission Capable	0
Non-Mission Capable	3
<b>Total Not Deployed</b>	<b>60</b>

Data as of: 05/21/12 @ 0700

# Active IA Disasters



# of DRs

Legend

1

Open Registration Period (60 days from Declaration, unless extended)

43IHP Active – IHP Assistance period remains open (18 Months from Declaration)

0IHP Closing Within 60 Days

Data as of: 05/21/12 @ 0700

# IA Registration Statistics



FEMA

Cumulative as of May 20, 2012 @ 1500					
DR # - State	Registrations	Approved Applicants	Total HA Approved	Total ONA Approved	Total IHP Approved
4061 – WV	823	488	\$2,172,427	\$246,816	\$2,419,242
Totals	823	488	\$2,172,427	\$246,816	\$2,419,242
72 hour change	0	+1	+\$5,411	\$0	+\$5,411

NPSC Call Data for May 18-20, 2012	
Total NPSC Calls Answered (Helpline + Registration Intake)	1,089
Average time to answer call	12 seconds

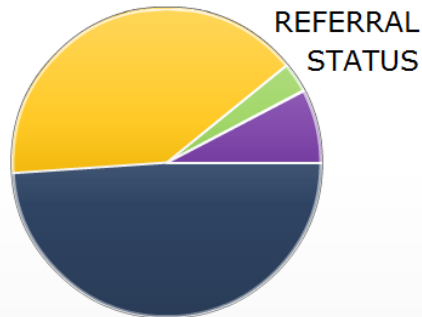
# IHP Referral Status & Awards



FEMA

- Approved - 240,078
- Ineligible - 197,318
- Withdrawn - 15,267
- Pending (FEMA) - 257
- Pending (Applicant) - 37,783

Total Referrals - 490,703



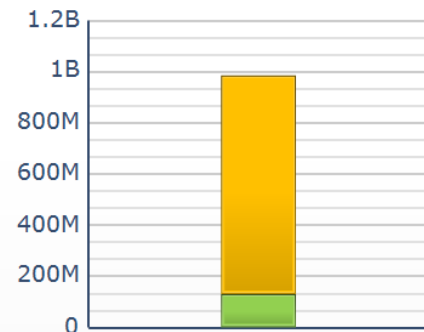
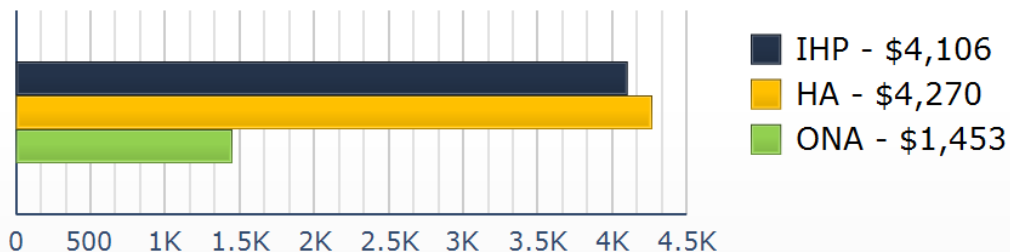
# MAX GRANTS

7,491

Total Awards

\$985,431,036

Average Awards for IHP / HA / ONA



ONA - \$129,990,719 HA - \$855,440,317

Data includes the 44 IHP Active DRs

# Max Grants = Applicants awarded maximum IHP (\$30,200 as of FY2012)

Data as of: 05/21/12 @ 0700

# Housing Inspection Statistics



**FEMA**

Data as of May 20, 2012 @ 1600					
DR # - State	Inspectors	Inspections Assigned	Inspections Completed	Inspection % Complete	Turnaround Time (Days)
4061 – WV	0	781	777	99.5%	2.0
TOTAL	0	781	777	99.5%	2.0
72 hour change	-2	+3	+7	+0.5%	+0.0

\* Only displaying inspectors for DRs that currently have open registration periods



# Direct Housing per State

## North Dakota 1981-DR

Total Units Occupied: 1,508

MH	Non-UFAS	580	UFAS	81
PM	Non-UFAS	828	UFAS	19

23 RFD at Staging Area

## Pennsylvania 4030-DR

Total Units Occupied: 236

MH	Non-UFAS	181	UFAS	1
PM	Non-UFAS	34	UFAS	20

15 RFD at Staging Area

## New York DRs 4020 & 4031 (combined)

Total Units Occupied: 89

MH	Non-UFAS	30	UFAS	3
PM	Non-UFAS	48	UFAS	8

## Missouri 1980-DR

Total Units Occupied: 314

MH	Non-UFAS	252	UFAS	28
PM	Non-UFAS	32	UFAS	2

## Arkansas 1975-DR

Total Units Occupied: 5

MH	Non-UFAS	2	UFAS	0
PM	Non-UFAS	3	UFAS	0

## North Carolina

Total Units Occupied: 48

9 Occupied

DR-1969	MH	Non-UFAS	4	UFAS	1
	PM	Non-UFAS	4	UFAS	0

32 Occupied

DR-4019	MH	Non-UFAS	2	UFAS	1
	PM	Non-UFAS	14	UFAS	15

## Occupied Units

1-25
26-100
100+

## Total Units Occupied:

2,436

## Units Available:

2,062 (568 UFAS)

Selma, AL:

1,416 (467 UFAS)

Cumberland, MD:

646 (101 UFAS)

UFAS—units constructed in accordance with the Uniform Federal Accessibility Standards  
\*UFAS Unit totals include UFAS units placed on UFAS and non-UFAS pads.

## Texas 4029-DR

Total Units Occupied: 75

MH	Non-UFAS	17	UFAS	17
PM	Non-UFAS	18	UFAS	23

## Louisiana DR 1786

Total Units Occupied: 1

PM	Non-UFAS	1	UFAS	0
----	----------	---	------	---

## Alabama 1971-DR

Total Units Occupied: 123

MH	Non-UFAS	104	UFAS	12
PM	Non-UFAS	6	UFAS	1

## Mississippi

Total Units Occupied: 44

DR-1604	<u>7 Occupied</u>				
	TT	Non-UFAS	6	UFAS	0
	MH	Non-UFAS	1	UFAS	0

DR-1972	23 Occupied				
	MH	Non-UFAS	11	UFAS	1
	PM	Non-UFAS	9	UFAS	2

DR-1983	<u>14 Occupied</u>				
	MH	Non-UFAS	11	UFAS	1
	PM	Non-UFAS	2	UFAS	0

Data as of: 05/17/12 @ 1500



# RRCC / Regional Watch Center Status



Region	RRCC	Regional Watch Center
I	Watch/Steady State	Maynard MOC (24/7)
II	Watch/Steady State	24/7
III	Watch/Steady State	24/7
IV	Watch/Steady State	24/7
V	Level II for NATO Summit	24/7
VI	Watch/Steady State	Denton MOC (24/7)
VII	Watch/Steady State	24/7
VIII	Watch/Steady State	Denver MOC (24/7)
IX	Watch/Steady State	24/7
X	Watch/Steady State	Bothell MOC (24/7)

# IMAT Status



National Teams					
Team	Status	Team	Status	Team	Status
BLUE (East)		WHITE (Central)	On Alert	RED (West)	
Regional Teams					
Team	Status	Team	Status	Team	Status
Region I	VT	Region V	Activated for NATO Summit	Region IX-1	
Region II		Region VI-1		Region IX-2	
Region III		Region VI-2		Region X	WA
Region IV-1		Region VII			
Region IV-2		Region VIII			

= Available/Mission Capable  
 = Available/Partially Mission Capable

= Assigned/Deployed  
 = Out-of-Service

# Urban Search & Rescue



INCIDENT SUPPORT TEAMS (Red-White-Blue) – Monthly On Call Rotation											
JAN	FEB	MAR	APR	MAY	JUN	JUL	AUG	SEP	OCT	NOV	DEC
WEST				CENTRAL				EAST			
Team	Status			Team	Status			Team	Status		
CA-TF1	Available			AZ-TF1	Available			FL-TF1	Available		
CA-TF2	Available			CO-TF1	Available			FL-TF2	Available		
CA-TF3	Available			IN-TF1	Available			MA-TF1	Available		
CA-TF4	Available			MO-TF1	Available			MD-TF1	Available		
CA-TF5	Available			NE-TF1	Available			NY-TF1	Available		
CA-TF6	Available			NM-TF1	Available			PA-TF1	Conditionally Available		
CA-TF7	Available			NV-TF1	Available			VA-TF1	Available		
CA-TF8	Available			TN-TF1	Available			VA-TF2	Available		
WA-TF1	Available			TX-TF1	Available			OH-TF1	Available		
				UT-TF1	Available						

= Available/Mission Capable

= Available/Partially Mission Capable

= Assigned/Deployed

= Out-of-Service

# National Team Status



Team/Status	Current Location	Remarks
National Watch Center	Washington, DC	Watch/Steady State
NRCC	Washington, DC	On Alert
HLT	Miami, FL	Not Activated
DEST	Washington, DC	Not Activated
Mission Capable	Partially Mission Capable	Not Mission Capable



# FEMA

**FEMA's mission is to support our citizens and first responders to ensure that as a nation we work together to build, sustain, and improve our capability to prepare for, protect against, respond to, recover from, and mitigate all hazards.**