



FEMA

Daily Operations Briefing

May 20, 2012

As of 8:30 a.m. EDT

Significant Activity: May 19 - 20



Significant Events: Wildfires – Arizona and Colorado

Tropical Activity:

- Atlantic: Tropical Storm Alberto
- Eastern Pacific:
 - Post Tropical Cyclone Aletta – dissipated the evening of Saturday, May 19
 - Area 1 – Medium chance (40%)

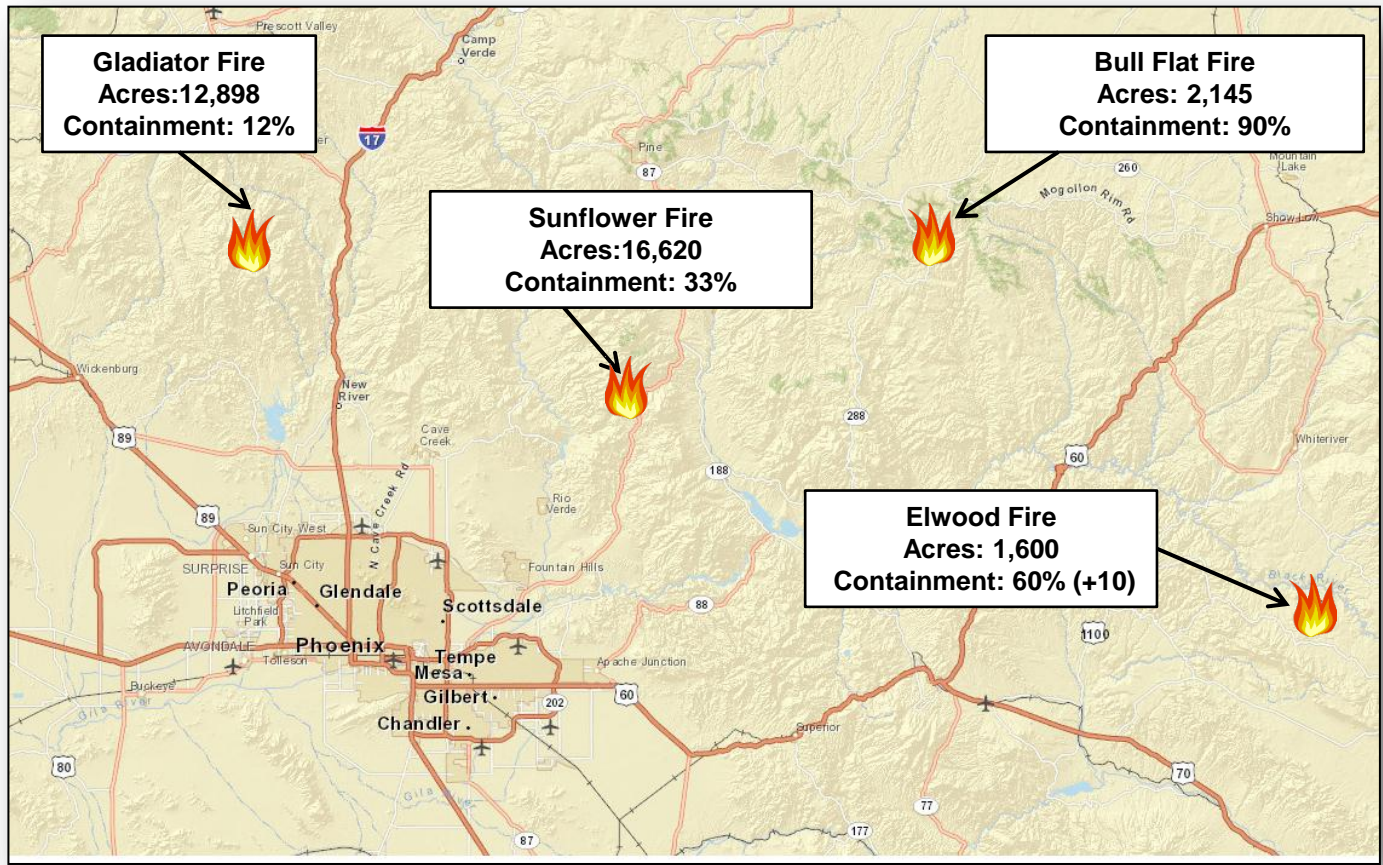
Significant Weather:

- Severe thunderstorms possible – Great Lakes
- Critical Fire Weather Areas: None
- Red Flag Warnings: Florida, Alabama and Alaska
- Space Weather: No space weather storms observed or predicted

Earthquake Activity: M6.0 - Northern Italy

Disaster Declaration Activity: None

Arizona Wildfires



Gladiator Fire, Arizona



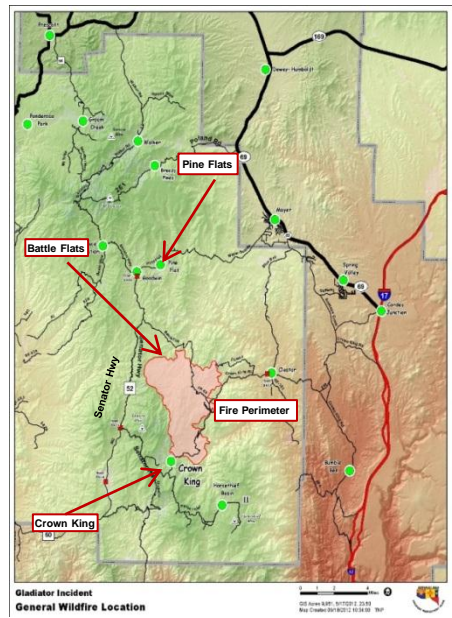
Fire Name	Location	Acres burned	% Contained	Est. Full Containment	FMAG Approved	Structures Lost / Threatened	Fatalities / Injuries
Gladiator Fire	Prescott National Forest (Yavapai Co.)	12,898	12% (+2)	TBD	None	4 structures lost/ 465 structures threatened	0 / 6

Current Situation

- At risk: Community of Crown King, structures in Battle Flat, Pine Flats, and Turkey Creek areas, and communications sites, power lines and historic sites within the Forest.
- ▲ Increased fire activity was noted on May 19—acreage will be updated after infrared sensing is complete.
- ▲ A hotter, drier trend with higher winds is expected over the next few days.

Response

- ▲ Total personnel involved in fire fight: 1,048 (+166), including Type I IMT
- Mandatory evacuations for Crown King, Pine Flats, Turkey Creek & Battle Flats.
 - ▲ Approx. 315 homes affected—most are vacation homes in isolated areas.
 - ARC Reception & Care Center open in Mayer – daytime operations only.
- Yavapai County EOC remains activated; AZ EOC remains at normal ops
- FEMA Region IX RRCC remains at Watch/Steady State and monitoring



Hewlett Fire, Colorado

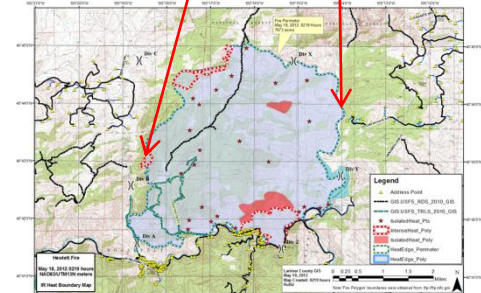
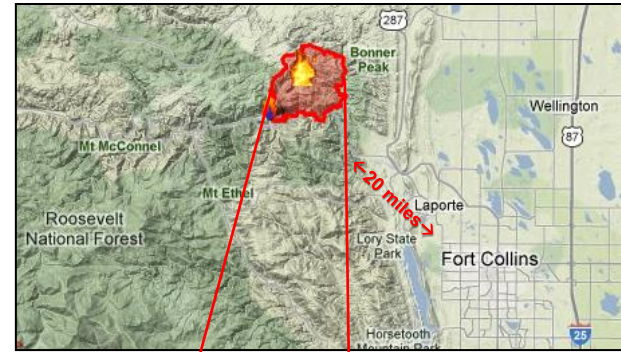
Fire Name	Location	Acres burned	% Contained	Est. Full Containment	FMAG Approved	Structures Lost / Threatened	Fatalities / Injuries
Hewlett Fire	Larimer County	7,685 (+12)	85% (+40)	5/20/2012	None	0 structures lost/ 150 structures threatened	0 / 2

Current Situation

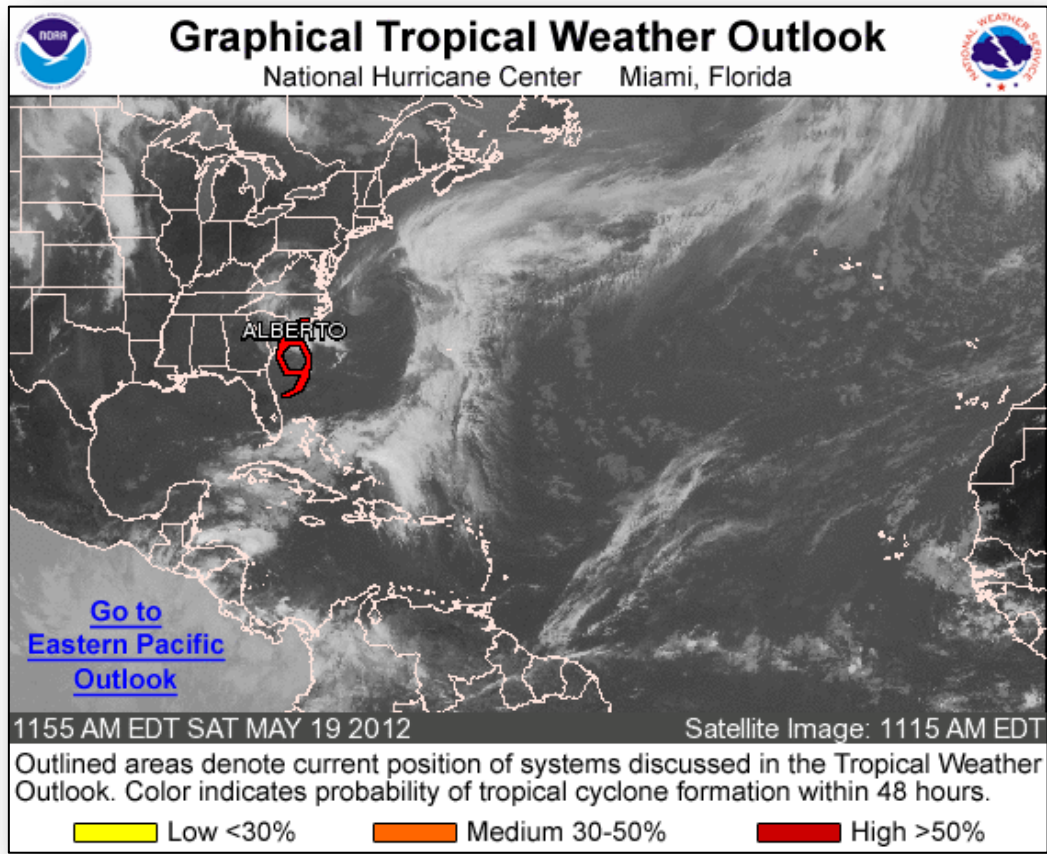
- ▲ Firefighters made good progress on Saturday—little to no fire spread.
- ▲ Very little active fire due to wet fuel conditions over the fire area.
- ▲ Fire has been burning primarily on Federal and State property; an estimated 1,322 acres is on private land.

Response:

- Governor declared a Disaster Emergency & activated National Guard
- All evacuations were lifted on Friday evening (May 18th)
- ▲ Total personnel committed: 582 (-10)
- ▲ All ARC shelters are closed.
- FEMA Region VIII and Colorado EOC remain at normal operations



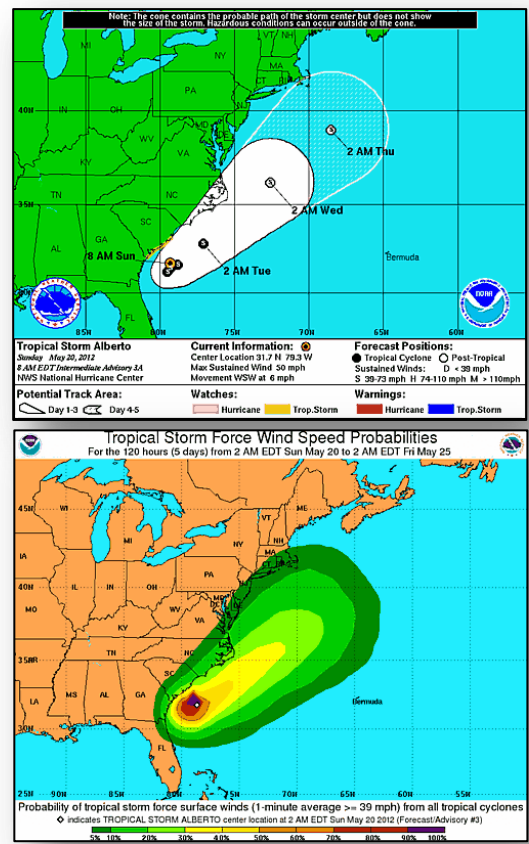
Atlantic– Tropical Outlook



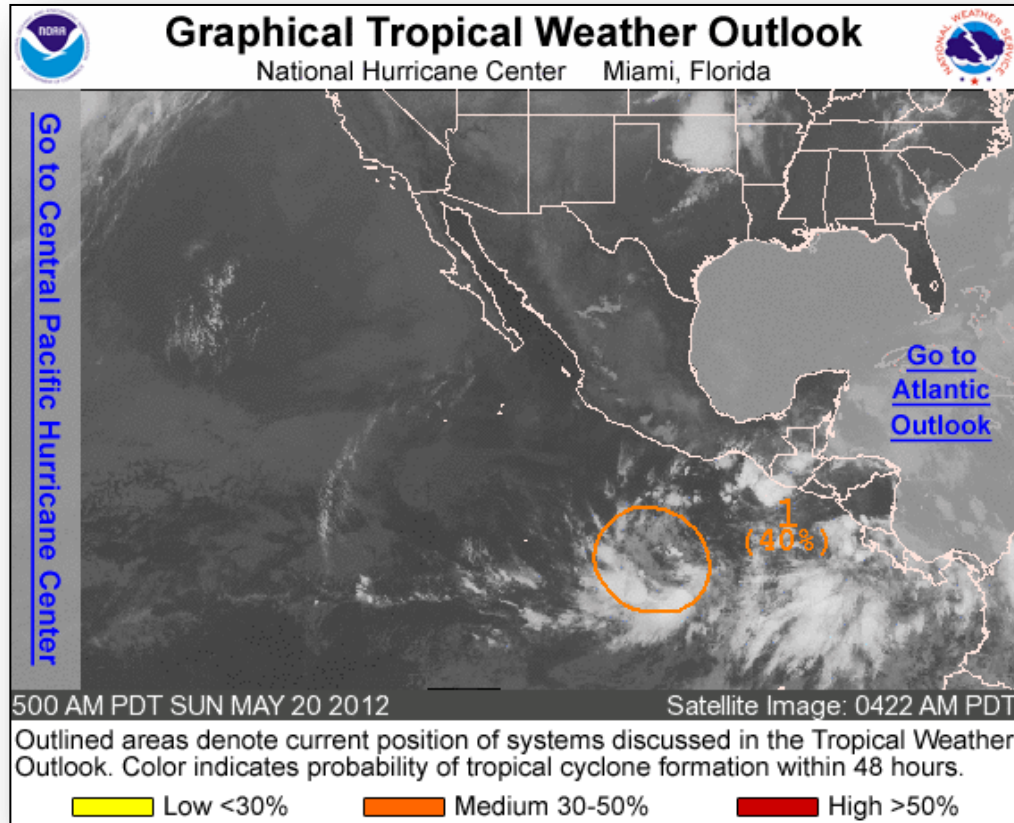
Atlantic – Tropical Storm Alberto

As of 8:00 a.m. EDT

- TS Alberto was located:
 - 95 miles SSE of Charleston, SC;
 - 115 miles ESE of Savannah, GA
- Moving WSW near 6 mph with decrease in forward speed today
- Max sustained winds near 50 mph w/higher gusts
- A turn toward the NE with little change in strength is forecast on Monday
- TS-force winds extend outward up to 70 miles
- Tropical Storm Watch is in effect from Savannah River, SC to South Santee River, SC
- Tropical storm conditions are possible along the coast of SC in the watch area later today or Monday.



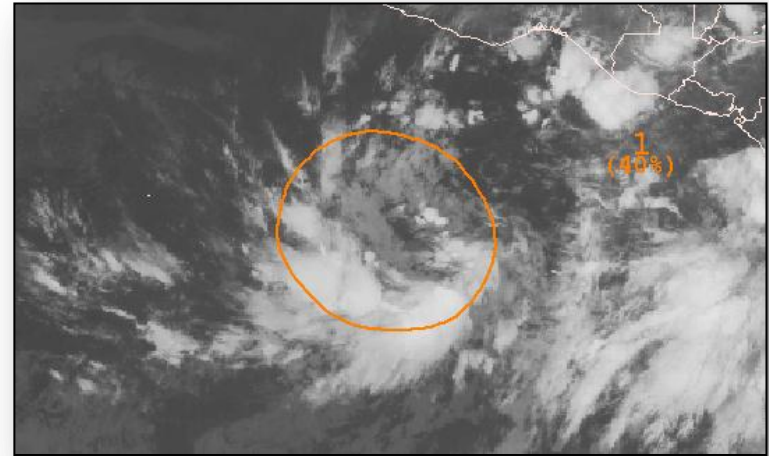
Eastern Pacific – Tropical Outlook



Eastern Pacific

Area 1

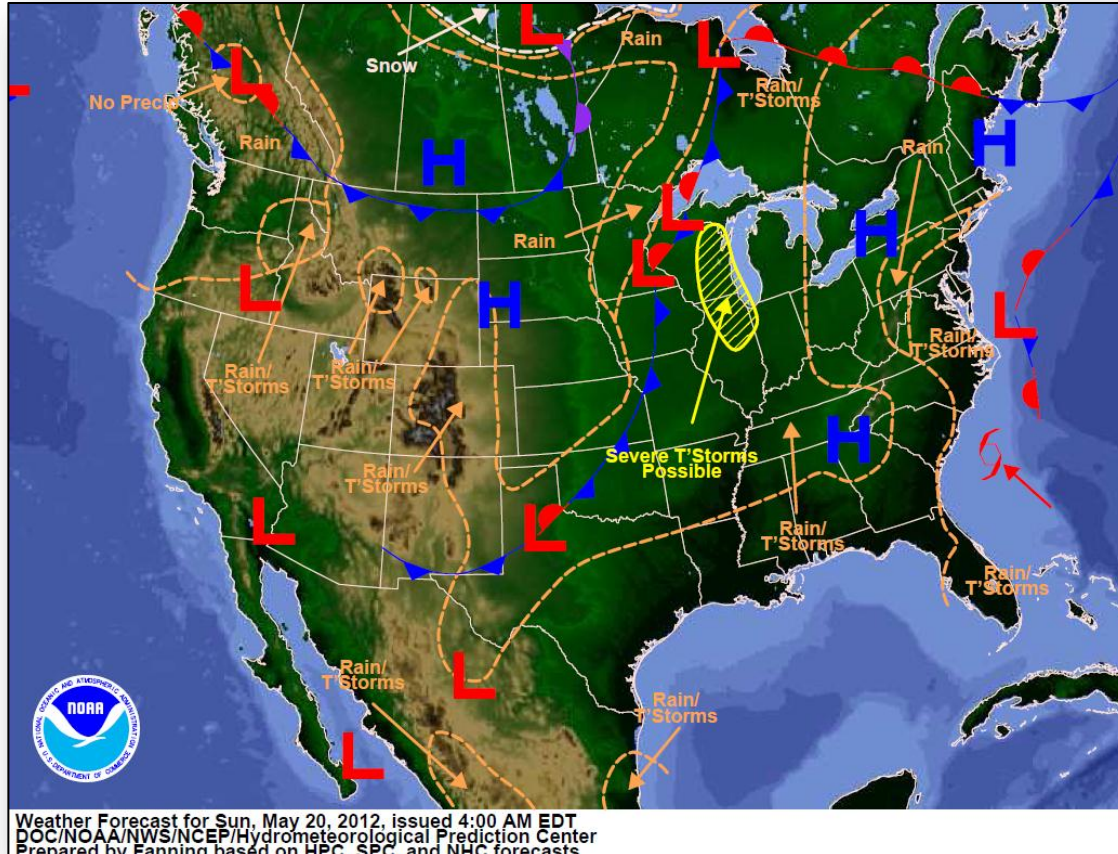
- Nearly stationary area of low pressure several hundred miles south of Acapulco, MX.
- Shower/thunderstorm activity continues to show signs of organization
- Gradual development possible over the next couple of days
- **Medium** chance (40%) of becoming tropical cyclone next 48 hours
- No coastal watches or warnings in effect



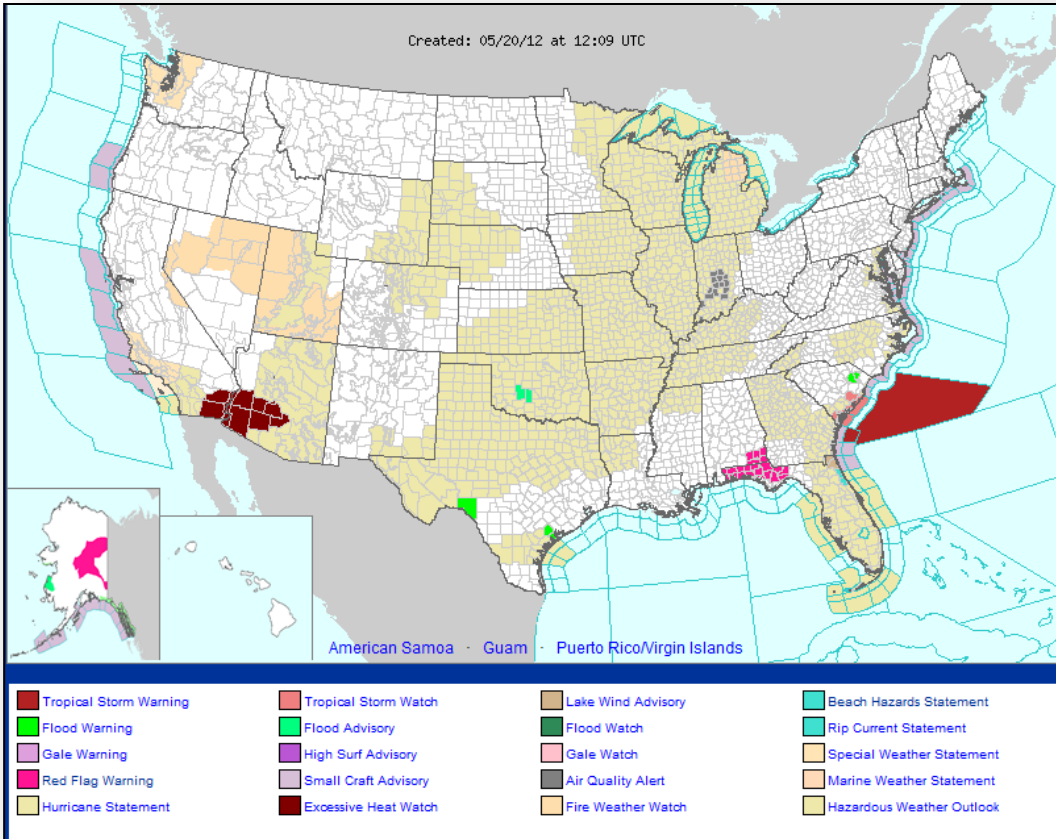
National Weather Forecast



FEMA



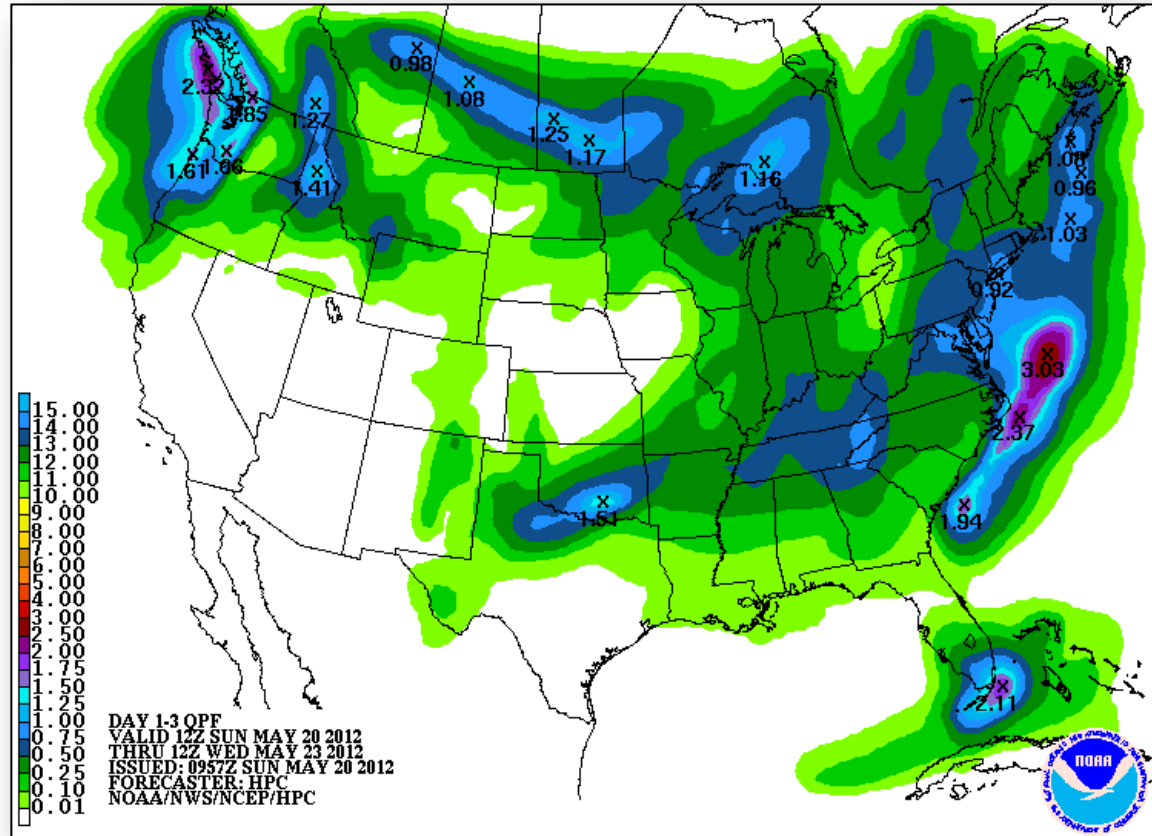
Active Watches/Warnings



Precipitation Forecast 1 – 3 Day



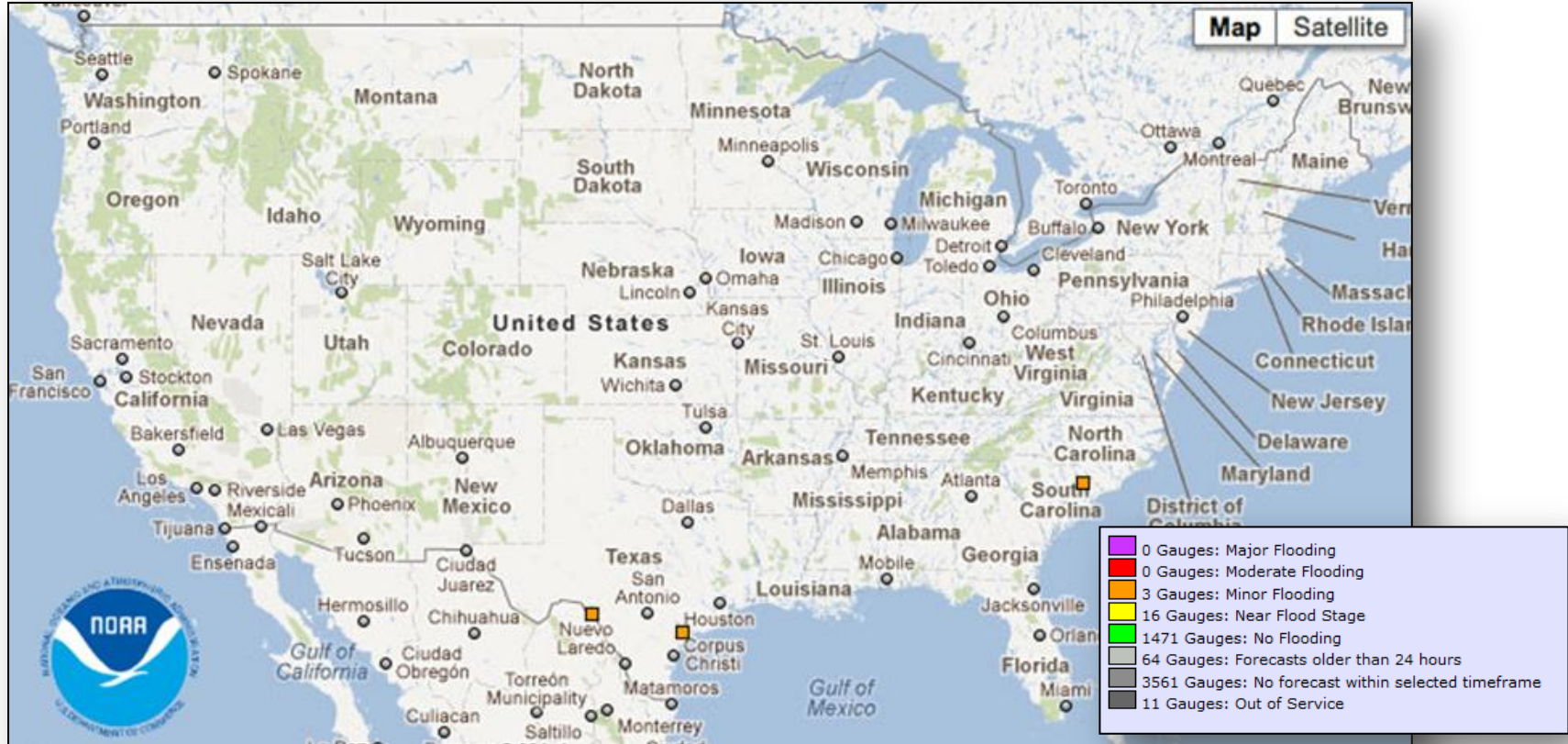
FEMA



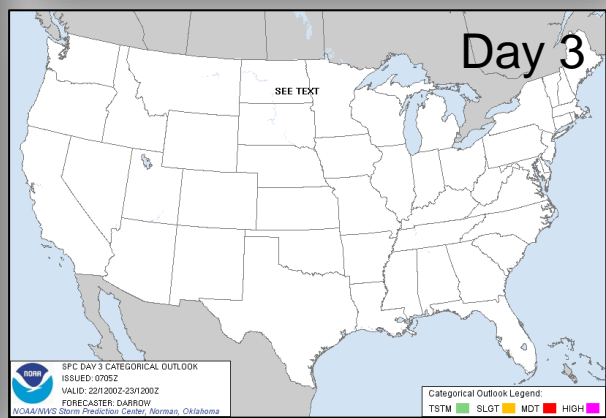
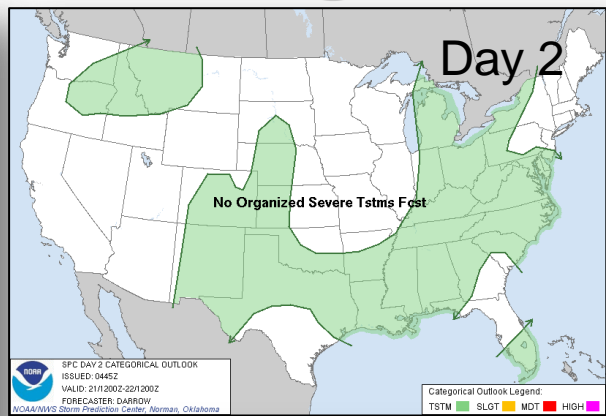
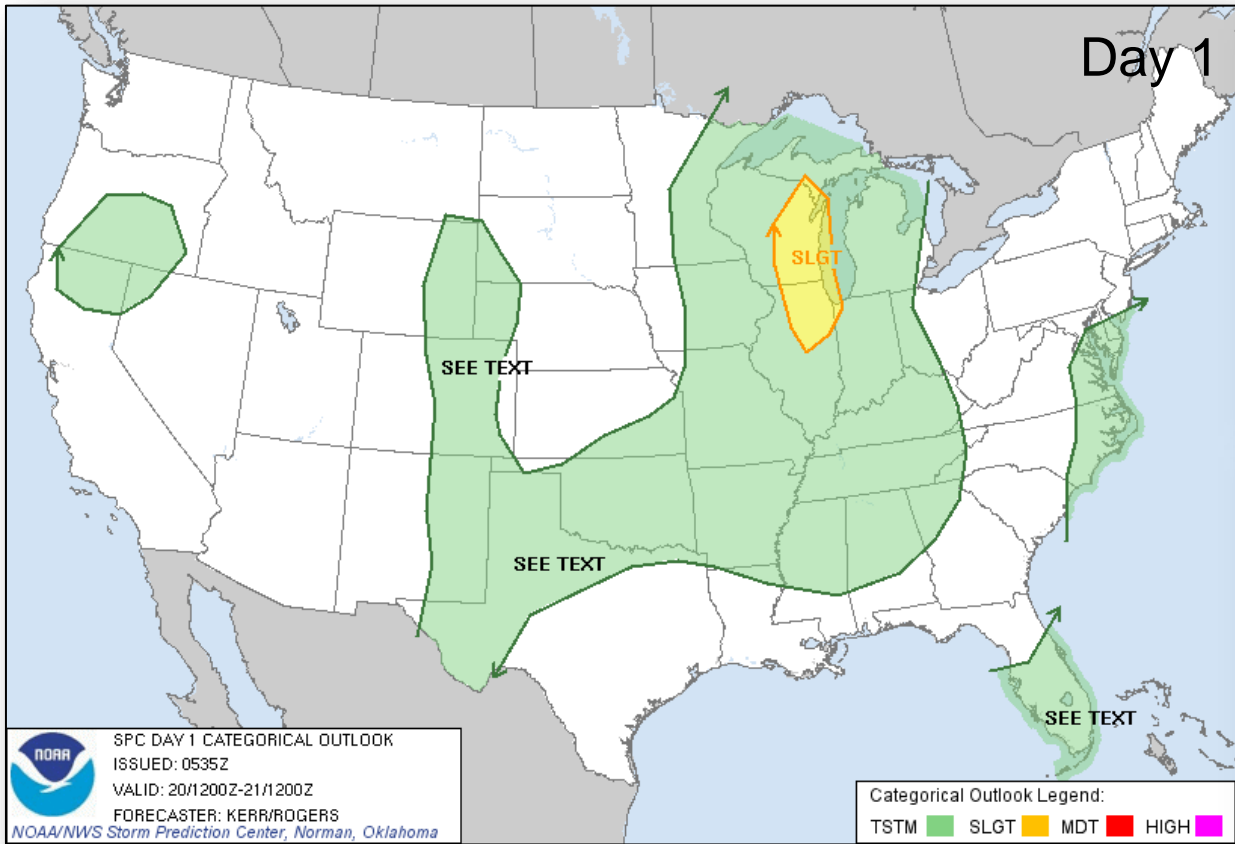
River Flood Outlook – 7 Day



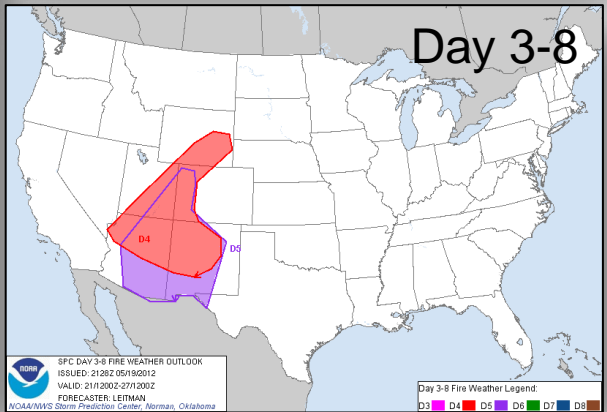
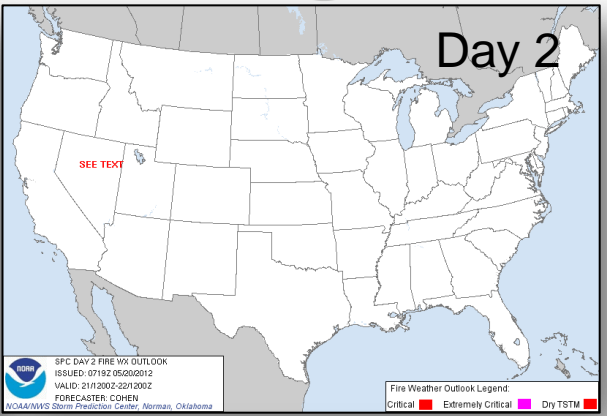
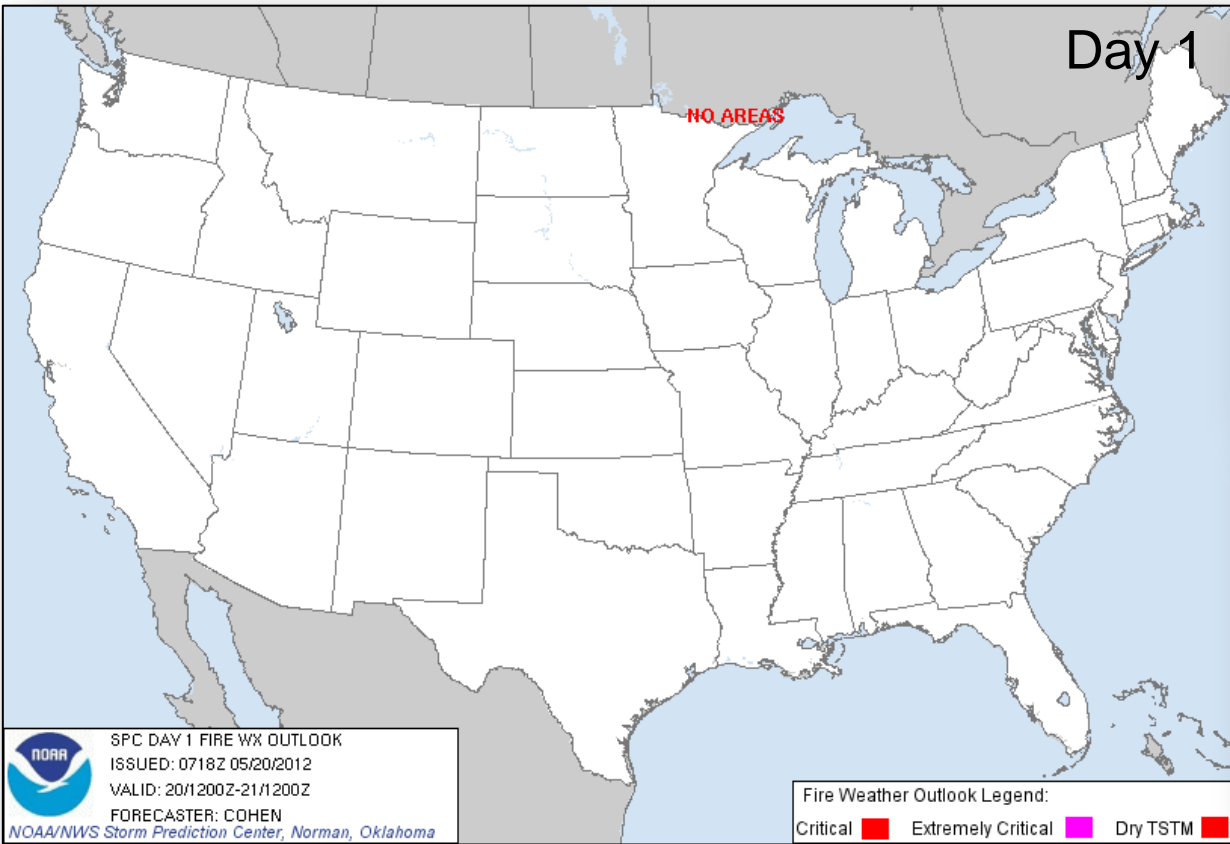
FEMA



Convective Outlook Days 1 – 3



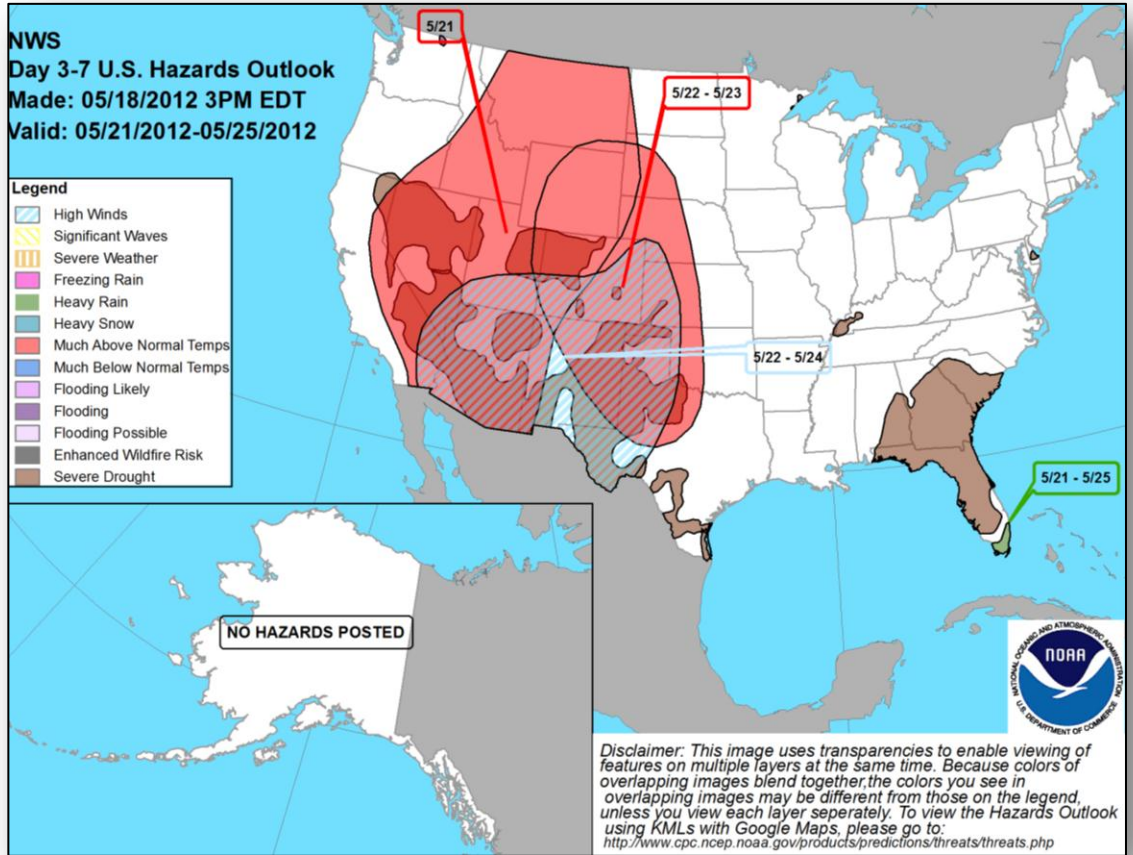
Critical Fire Weather Areas Days 1 – 8



Hazard Outlook: May 21 – 25



FEMA

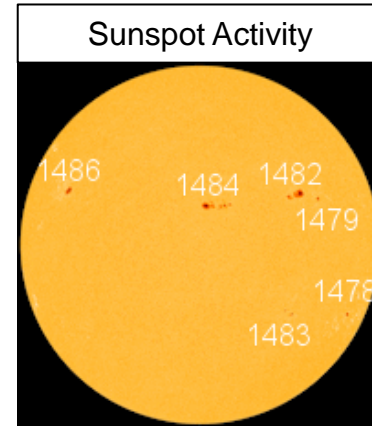
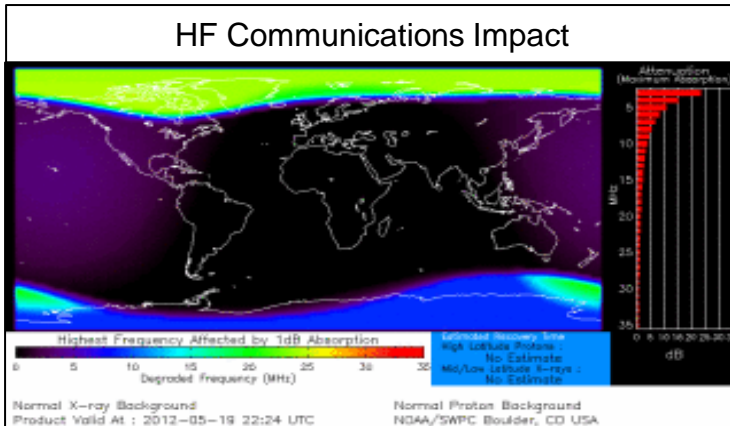


Space Weather

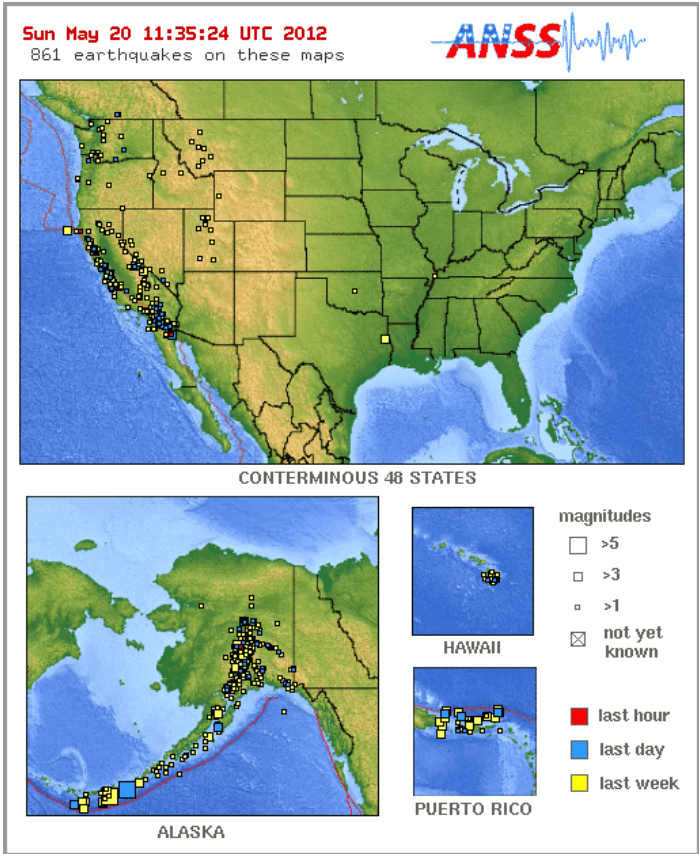


FEMA

NOAA Scales Activity Range 1 (minor) to 5 (extreme)	Past 24 Hours	Current	Next 24 Hours
Geomagnetic Storms	None	None	None
Solar Radiation Storms	None	None	None
Radio Blackouts	None	None	None
Space Weather	None	None	None



Significant Earthquake Activity – U.S.



- No significant earthquake activity

Significant Earthquake Activity - International



FEMA



M 6.0 Earthquake Northern Italy

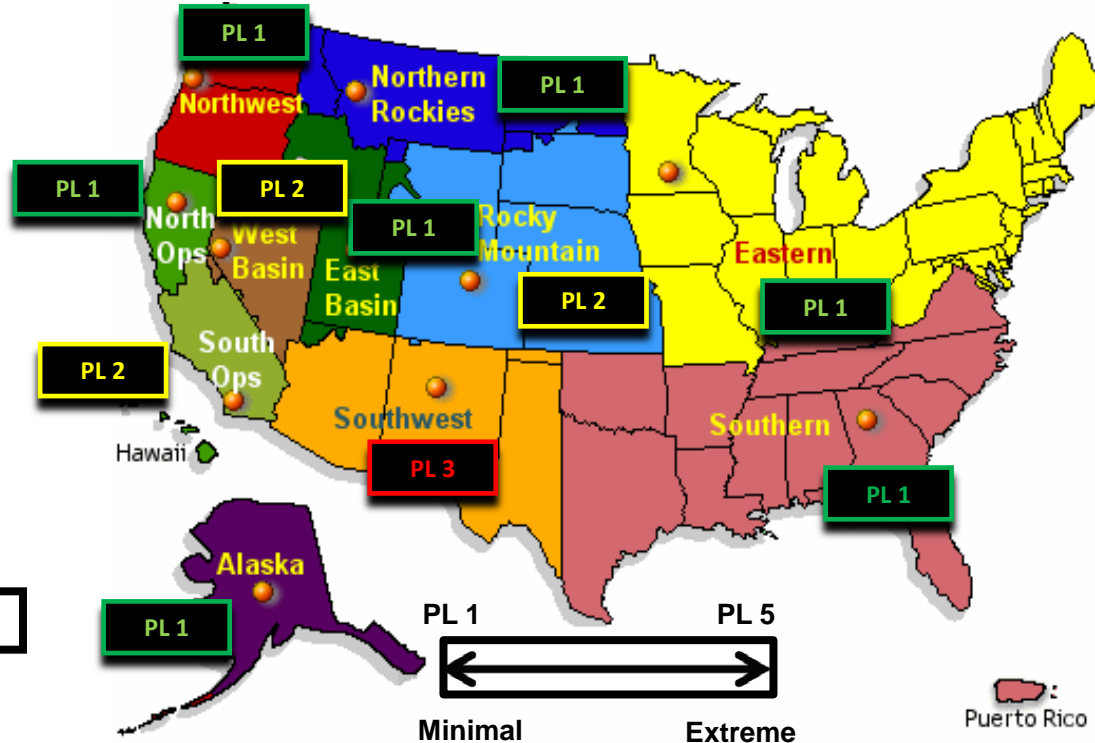
- May 19, 2012 at 10:03 p.m. EDT
 - 22 miles NNW of Bologna, Italy
 - 210 miles NNW of Rome, Italy
 - Depth: 3.2 miles
- M 5.1 aftershock occurred at depth of 6.2 miles
- USGS issued an updated PAGER alert:
 - **ORANGE** for economic losses: Significant damage is likely and disaster is potentially widespread.
 - **YELLOW** for shaking-related fatalities: Some casualties are possible.
- Media reports 50 injuries/4 fatalities and structural damage
- US&R monitoring situation; no requests for FEMA or International assistance

U.S. Wildland Fire Preparedness Levels



National Preparedness Level: 2

Several Geographic Areas are experiencing high to extreme fire danger. Wild land fire activity is increasing, and large fires are occurring in one (1) or more Geographic Areas. Minimal mobilization of resources from other Geographic Areas is occurring. There is moderate commitment of National Resources with the potential to mobilize additional resources from other Geographic Areas.

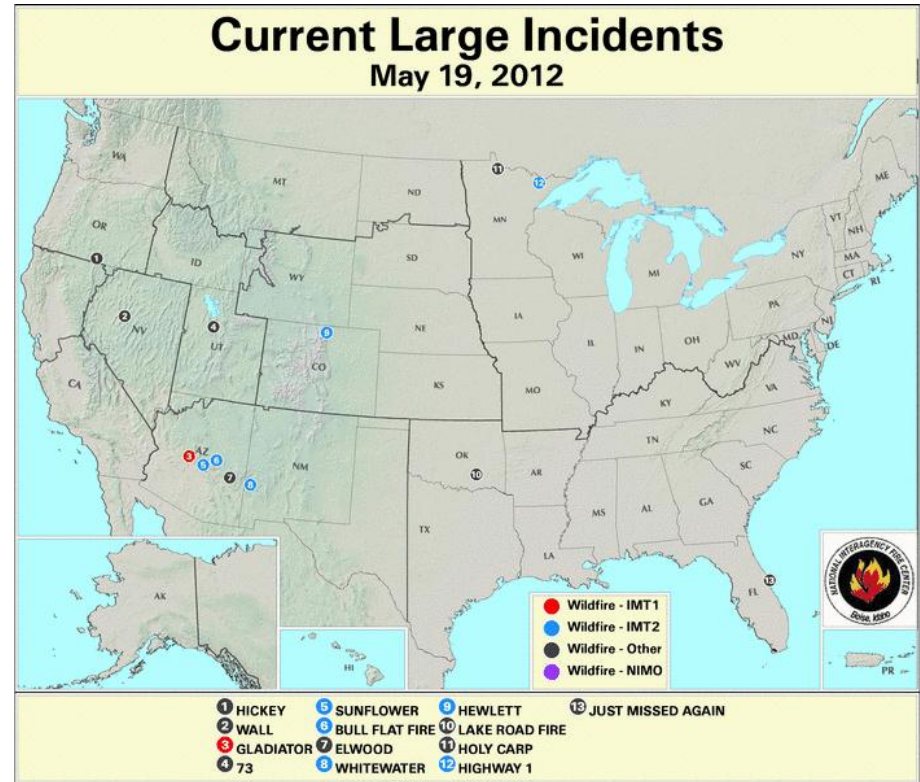


As of May 19, 2012

National Fire Activity

May 19, 2012:

- National Preparedness Level: 2
- Initial Attack Activity: Light
(106 new fires)
- New Large Fires: 2
- Large Fires Contained: 0
- Uncontained Large Fires: 13
- Type 1 IMT(s) Committed: 1
- Type 2 IMT(s) Committed: 5
- States Affected: AZ, NM, CO, MN, NV, UT, FL, OK, OR



Disaster Requests & Declarations



Declaration Requests in Process		Requests APPROVED (since last report)	Requests DENIED (since last report)
1	Date Requested	0	0
KS – DR Severe Storms & Tornadoes April 14-15, 2012	May 10, 2012		

FMAG Requests and Declarations



FEMA

Action (since last report)	Total	FMAG No. and State
Requests DENIED	0	
Requests APPROVED	0	
Requests Expected Next 24 Hours	0	None as of 1200 5/18/12

As of May 18, 2012	2012	2011*
FMAGs Approved	3	50
FMAGs Denied	3	14
* Cumulative FMAG figures as of this date in 2011		

FCO Cadre Member Status

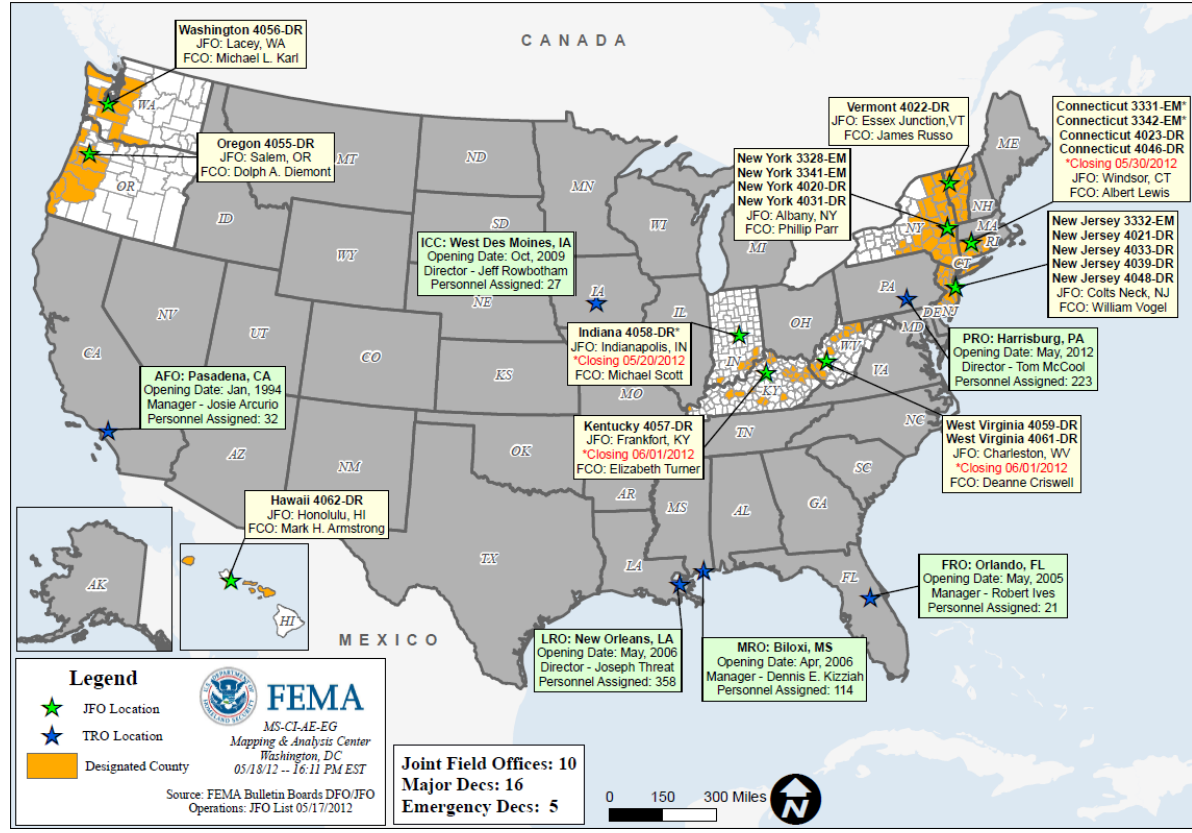


Deployed	Detailed	Available	Not Available	Total
11	3	18	5	37

Total Available	Type 1	Type 2	Type 3	Type 4
21*	3*	9	7	2

* All Type 1 FCOs are available unless deployed to a Level 1 event

Open Field Offices as of May 20, 2012



Washington 4056-DR
 JFO: Lacey, WA
 FCO: Michael L. Karl

Oregon 4055-DR
 JFO: Salem, OR
 FCO: Dolph A. Diemont

AFO: Pasadena, CA
 Opening Date: Jan, 1994
 Manager - Josie Arcurio
 Personnel Assigned: 32

Hawaii 4062-DR
 JFO: Honolulu, HI
 FCO: Mark H. Armstrong

ICC: West Des Moines, IA
 Opening Date: Oct, 2009
 Director - Jeff Rowbotham
 Personnel Assigned: 27

Indiana 4058-DR*
 JFO: Indianapolis, IN
 *Closing 05/20/2012
 FCO: Michael Scott

Kentucky 4057-DR
 JFO: Frankfort, KY
 *Closing 06/01/2012
 FCO: Elizabeth Turner

LRO: New Orleans, LA
 Opening Date: May, 2006
 Director - Joseph Threat
 Personnel Assigned: 358

MRO: Biloxi, MS
 Opening Date: Apr, 2006
 Manager - Dennis E. Kizziah
 Personnel Assigned: 114

New York 3328-EM
 New York 3341-EM
 New York 4020-DR
 New York 4031-DR
 JFO: Albany, NY
 FCO: Phillip Parr

Vermont 4022-DR
 JFO: Essex Junction, VT
 FCO: James Russo

Connecticut 3331-EM*
 Connecticut 3342-EM*
 Connecticut 4023-DR
 Connecticut 4046-DR
 *Closing 05/30/2012
 JFO: Windsor, CT
 FCO: Albert Lewis

New Jersey 3332-EM
 New Jersey 4021-DR
 New Jersey 4033-DR
 New Jersey 4039-DR
 New Jersey 4048-DR
 JFO: Colts Neck, NJ
 FCO: William Vogel

PRO: Harrisburg, PA
 Opening Date: May, 2012
 Director - Tom McCool
 Personnel Assigned: 223

West Virginia 4059-DR
 West Virginia 4061-DR
 JFO: Charleston, WV
 *Closing 06/01/2012
 FCO: Deanne Criswell

FRO: Orlando, FL
 Opening Date: May, 2005
 Manager - Robert Ives
 Personnel Assigned: 21

MCOV Fleet / Deployment Status



MCOV FLEET STATUS					
Location	Units Assigned	Available FMC	Deployed Committed	PMC	NMC
DC Atlanta	21	21			
DC Cumberland	13	10			3
DC Ft Worth	15	15			
DC Moffett	6	6			
Holliston, MA	1	1			
Denver, CO	2	2			
Bothell, WA	2	2			
TOTAL	60	57	0	0	3
Included in above totals, units en route for turn-in.					

MCOV DISASTER SUPPORT DEPLOYMENTS					
DR-State	OPCON	En Route	Reserved	Open Request	Notes:
TOTAL	0	0	0	0	

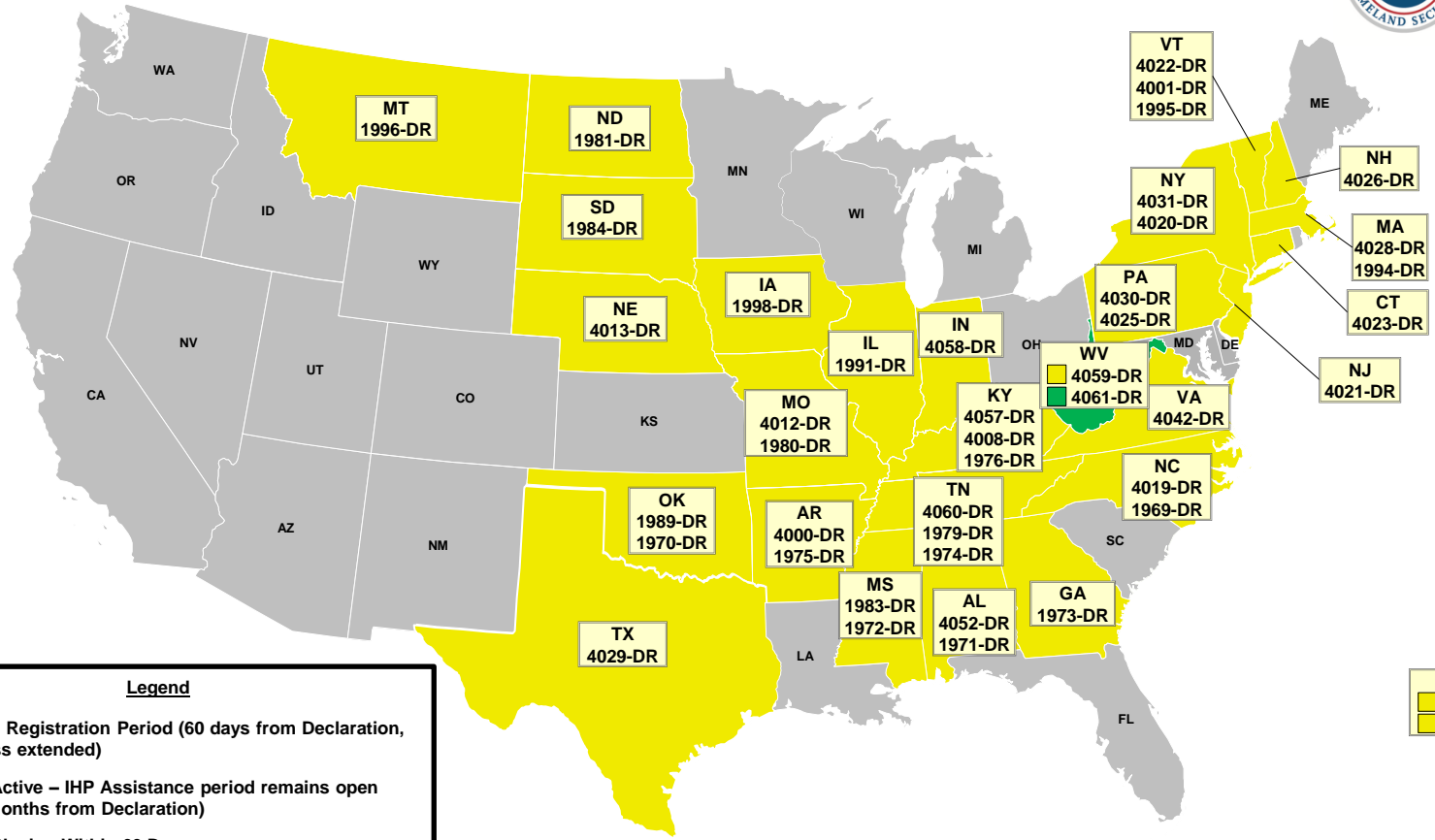
Fully Mission Capable	57
Partially Mission Capable	0
Non-Mission Capable	3
Total Not Deployed	60

Data as of: 05/17/12 @ 1500

Active IA Disasters



FEMA



# of DRs	Legend
1	Open Registration Period (60 days from Declaration, unless extended)
43	IHP Active – IHP Assistance period remains open (18 Months from Declaration)
0	IHP Closing Within 60 Days

Data as of: 05/17/12 @ 1500

IA Registration Statistics



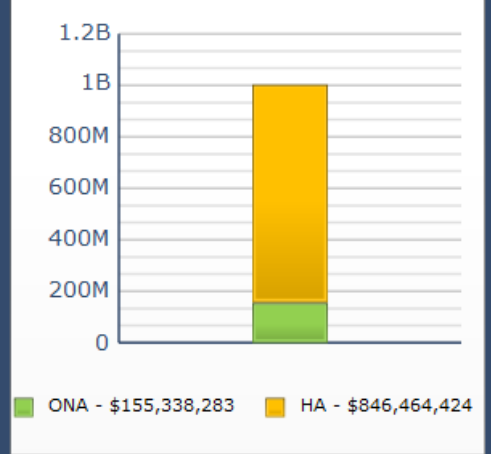
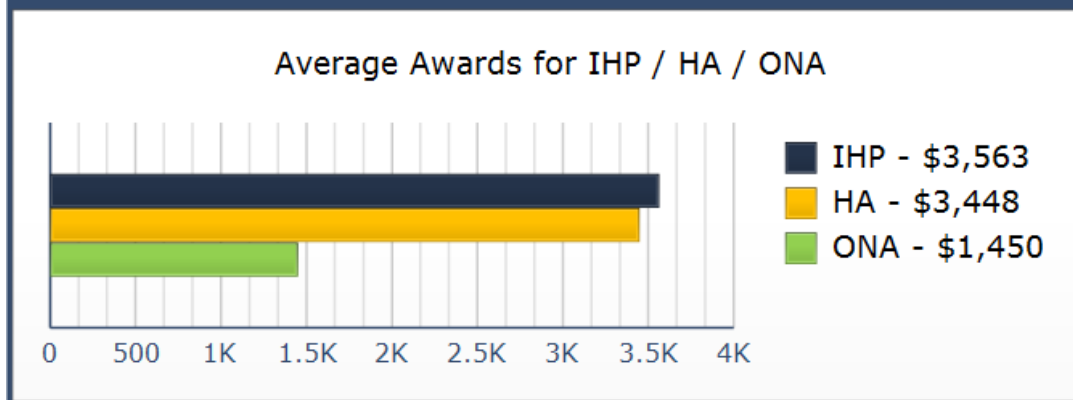
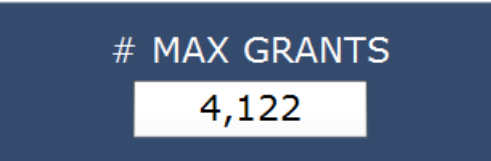
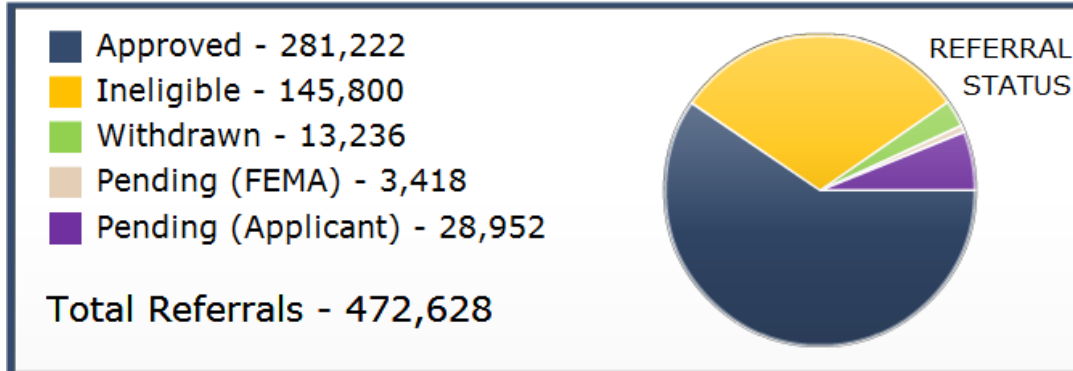
Cumulative as of May 17, 2012 @ 1500

DR # - State	Registrations	Approved Applicants	Total HA Approved	Total ONA Approved	Total IHP Approved
4061 – WV	823	487	\$2,167,016	\$246,816	\$2,413,831
Totals	823	487	\$2,167,016	\$246,816	\$2,413,831
24 hour change	0	+8	+\$8,607	\$0	+\$8,607

NPSC Call Data for May 16, 2012

Total NPSC Calls Answered (Helpline + Registration Intake)	911
Average time to answer call	11 seconds

IHP Referral Status & Awards



Data includes the 44 IHP Active DRs
 # Max Grants = Applicants awarded maximum IHP (\$30,200 as of FY2012)

Data as of: 05/17/12 @ 1500

Housing Inspection Statistics



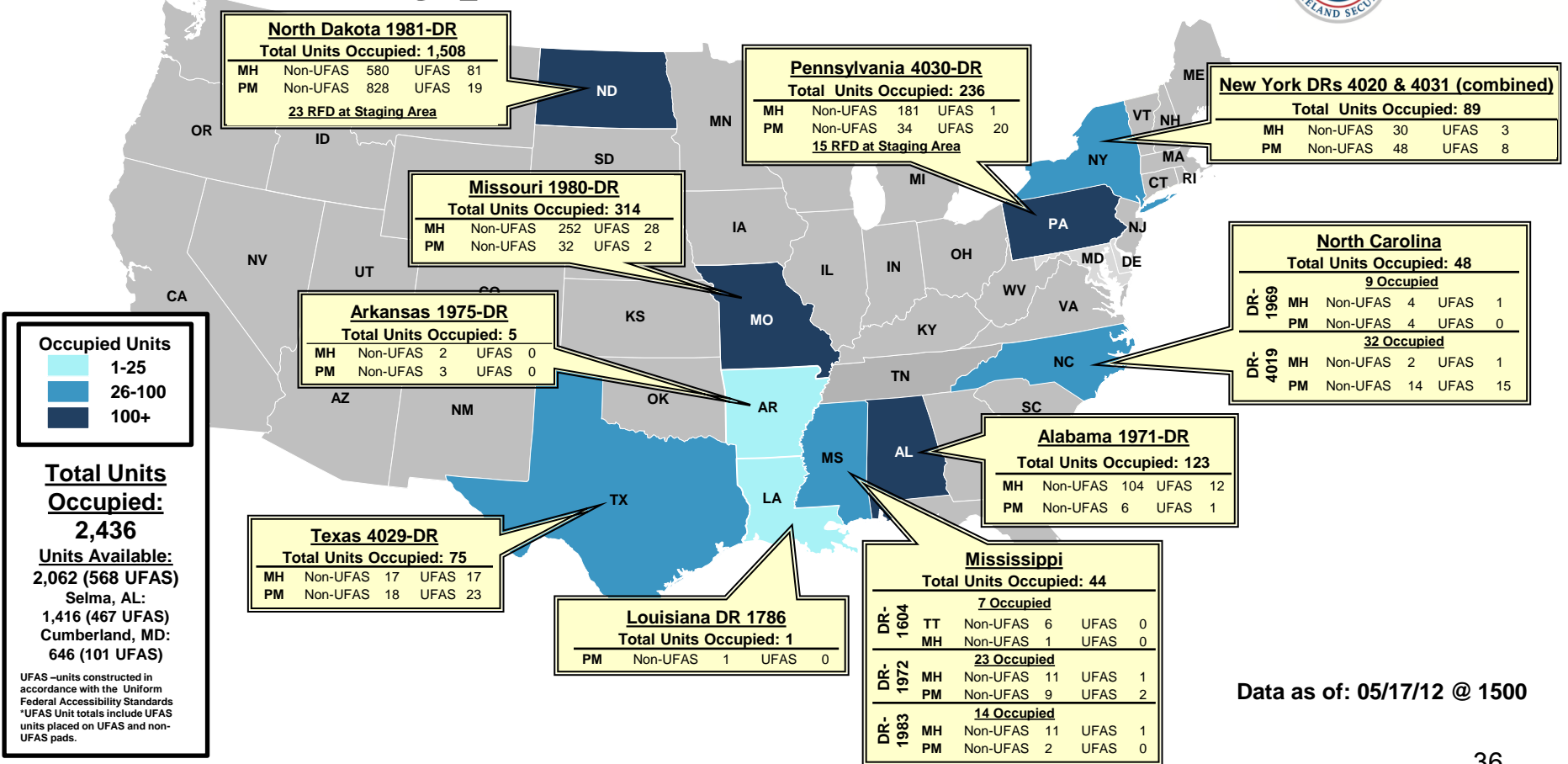
Data as of May 17, 2012 @ 1600

DR # - State	Inspectors	Inspections Assigned	Inspections Completed	Inspection % Complete	Turnaround Time (Days)
4061 – WV	2	778	770	99.0%	2.0
TOTAL	2	778	770	99.0%	2.0
24 hour change	-1	+4	+6	+0.3%	+0.0

* Only displaying inspectors for DRs that currently have open registration periods



Direct Housing per State



Data as of: 05/17/12 @ 1500

RRCC / Regional Watch Center Status



Region	RRCC	Regional Watch Center
I	Watch/Steady State	Maynard MOC (24/7)
II	Watch/Steady State	24/7
III	Watch/Steady State	24/7
IV	Watch/Steady State	24/7
V	Level II for NATO Summit	24/7
VI	Watch/Steady State	Denton MOC (24/7)
VII	Watch/Steady State	24/7
VIII	Watch/Steady State	Denver MOC (24/7)
IX	Watch/Steady State	24/7
X	Watch/Steady State	Bothell MOC (24/7)

IMAT Status



National Teams					
Team	Status	Team	Status	Team	Status
BLUE (East)		WHITE (Central)	On Alert	RED (West)	
Regional Teams					
Team	Status	Team	Status	Team	Status
Region I	VT	Region V	Activated for NATO Summit	Region IX-1	
Region II		Region VI-1		Region IX-2	
Region III		Region VI-2		Region X	WA
Region IV-1		Region VII			
Region IV-2		Region VIII			

= Available/Mission Capable
 = Assigned/Deployed
 = Available/Partially Mission Capable
 = Out-of-Service

Urban Search & Rescue



INCIDENT SUPPORT TEAMS (Red-White-Blue) – Monthly On Call Rotation											
JAN	FEB	MAR	APR	MAY	JUN	JUL	AUG	SEP	OCT	NOV	DEC
WEST				CENTRAL				EAST			
Team		Status		Team		Status		Team		Status	
CA-TF1		Available		AZ-TF1		Available		FL-TF1		Available	
CA-TF2		Available		CO-TF1		Available		FL-TF2		Available	
CA-TF3		Available		IN-TF1		Available		MA-TF1		Available	
CA-TF4		Available		MO-TF1		Available		MD-TF1		Available	
CA-TF5		Available		NE-TF1		Available		NY-TF1		Available	
CA-TF6		Available		NM-TF1		Available		PA-TF1		Conditionally Available	
CA-TF7		Available		NV-TF1		Available		VA-TF1		Available	
CA-TF8		Available		TN-TF1		Available		VA-TF2		Available	
WA-TF1		Available		TX-TF1		Available		OH-TF1		Available	
				UT-TF1		Available					

= Available/Mission Capable
 = Assigned/Deployed
 = Available/Partially Mission Capable
 = Out-of-Service

National Team Status



Team/Status	Current Location	Remarks
National Watch Center	Washington, DC	Watch/Steady State
NRCC	Washington, DC	On Alert
HLT	Miami, FL	Not Activated
DEST	Washington, DC	Not Activated
Mission Capable	Partially Mission Capable	Not Mission Capable



FEMA

FEMA's mission is to support our citizens and first responders to ensure that as a nation we work together to build, sustain, and improve our capability to prepare for, protect against, respond to, recover from, and mitigate all hazards.