



Spring Field Tour

at

Cane Springs Ranch



Friday May 8th, 2015

Agenda

9:00 am Meet at the Cane Spring Ranch Headquarters. Registration and Introductions.

9:30 am History of the Cane Spring Ranch.

~ Anita Waite, Cane Springs Representative

10:30 am Rangeland Management strategies both past and present.

~ Chris Lowman, Arizona Department of lands.

11:30 am Tour Location 1:

Conflicts and Solutions with Endangered Species. ~ Mike Blanton, BLM

12:15 pm Lunch

1:00 pm Tour Location 2: Rangeland management and current Rangeland Condition.

~ Anita Waite and Mike Blanton

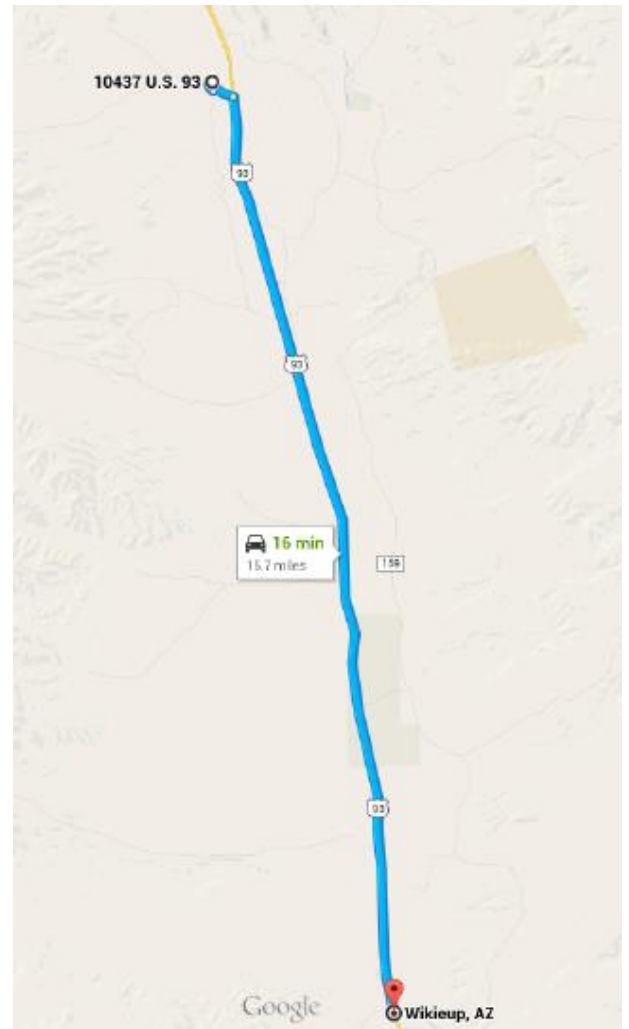
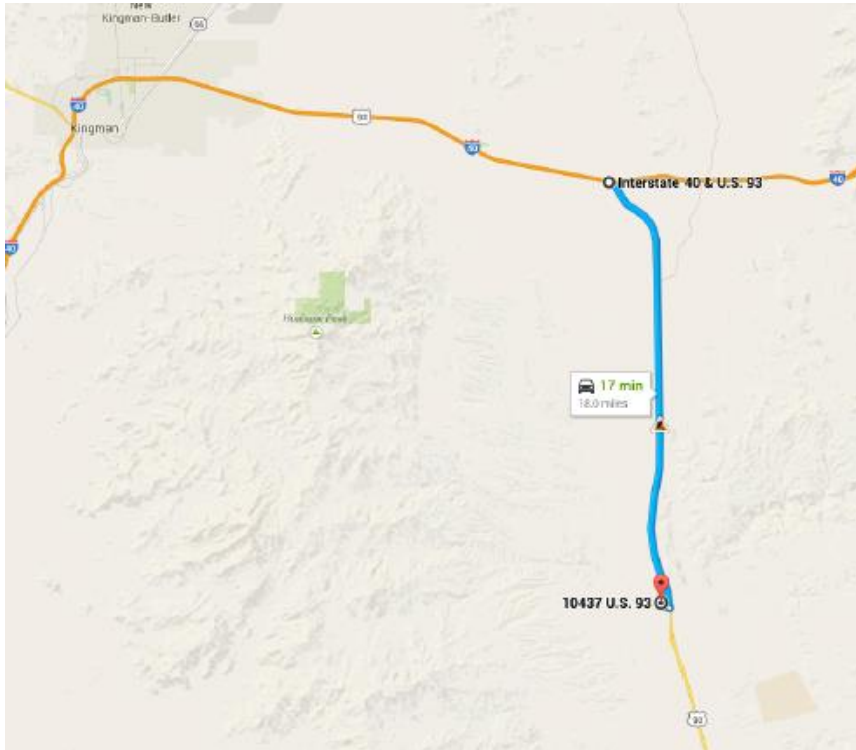
2:00 pm Tour Location 3:

Collaborative Rangeland improvements and Managing with a checkerboard land ownership system. ~ Mike Blanton

3:00 pm Arrive back at the Cane Spring Ranch Headquarters and call it a day.

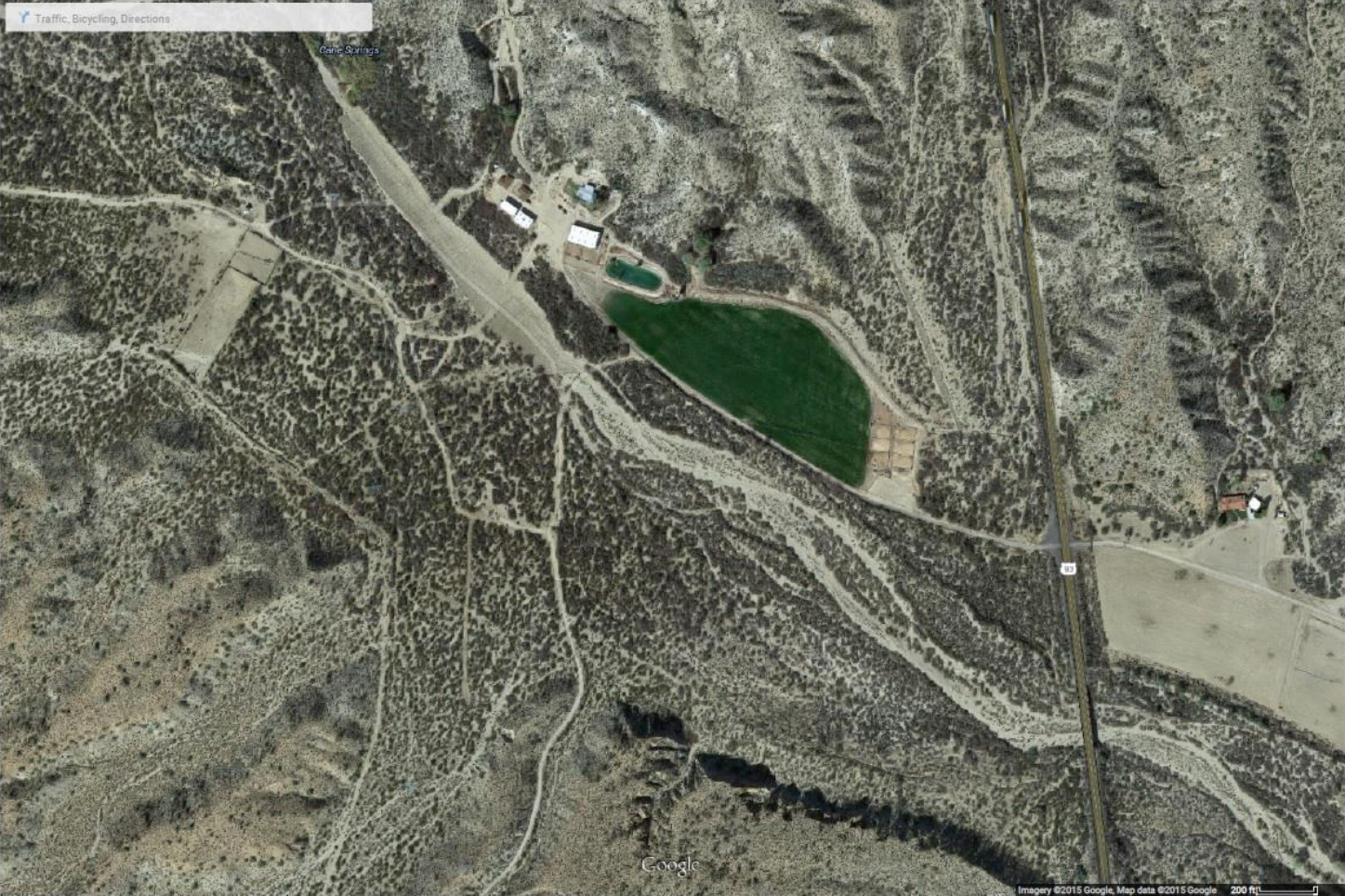
Directions:

Cane Springs Ranch Head Quarters is located on the west side of the 93 between mile markers 27 and 28. It is approximately 18 miles south of the I-40 and 15.7 miles north of Wikieup.



Traffic, Bicycling, Directions

Cane Springs



Google

Imagery ©2015 Google, Map data ©2015 Google 200 ft