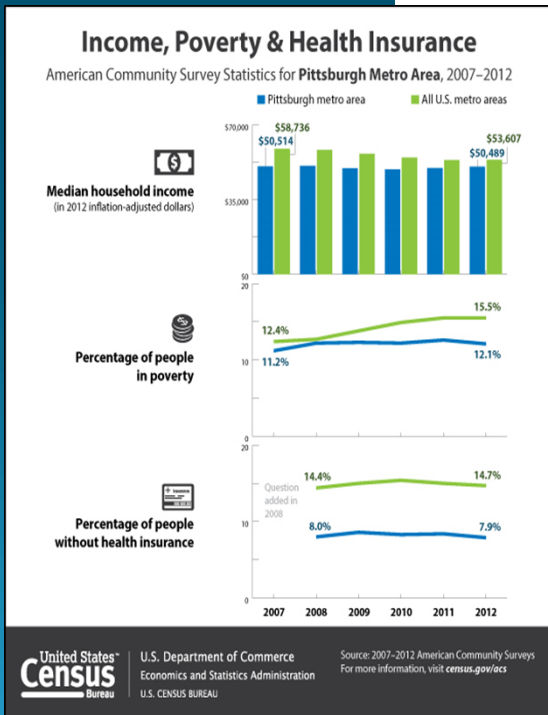


## Census Data for Community Analysis



**The Census Data for Community Analysis Workshop will help you capture the key demographic, social, economic and housing indicators that define your community.**

**Learn how to access data for small-area geographies, such as Zip Codes and Census Tracts.**

**Workshop participants will**

- **Access neighborhood-level data to create Community Profiles.**
- **Obtain the most recent data on age, income, poverty, race/ethnicity, and other measures using American Community Survey (ACS) yearly released data.**

**U.S. CENSUS BUREAU  
LOS ANGELES  
REGIONAL OFFICE**

15350 Sherman Way, Suite 400  
Van Nuys, CA 91406

Toll Free Phone: 888-806-6389  
Phone: 818-267-1725  
[www.census.gov/regions/los\\_angeles](http://www.census.gov/regions/los_angeles)

*To host a presentation and/or workshop in  
Alaska, California, Hawaii, Idaho, Nevada, Oregon  
and Washington:*

*Send an email request to [laro.pds.list@census.gov](mailto:laro.pds.list@census.gov)  
or call  
our toll free number 888-806-6389*

*All Presentations and Workshops are provided at no cost and  
Customized to Your Organizational Needs by Geography  
and Area of Interest.*