



# WAVE

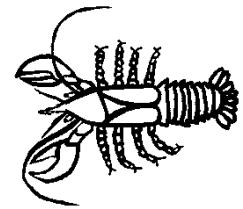
Wadeable Assessments  
by Volunteer Evaluators



## How healthy is your stream? Help NYS DEC find out!

### Become a Citizen Monitor for WAVE

1. Find a stream you would like to visit.
2. Register for a 4 hour training session at:  
<http://www.dec.ny.gov/chemical/91549.html>



### What is WAVE

This simple assessment can be performed by most everyone.

- Visit streams during July – September.
- Collect and identify stream organisms
- Preserve one example for each organism for identification by the WAVE Coordinator

If you find six or more of our “Most Wanted” organisms, the NYS DEC will consider that a healthy stream.

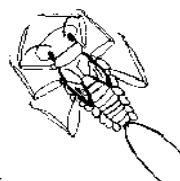
If you only find “Least Wanted” organisms, the stream will be flagged for further investigation.



### How WAVE helps NYS DEC

WAVE data are included in federal and state water quality reports.

WAVE data are also used to target NYS DEC assessments and local restoration efforts to where they are most needed.



**For More Information, contact:**

**Alene Onion, WAVE Coordinator**  
**Hudson River Estuary Program**  
**phone: 518 402 8166**  
**[amonion@gw.dec.state.ny.us](mailto:amonion@gw.dec.state.ny.us)**