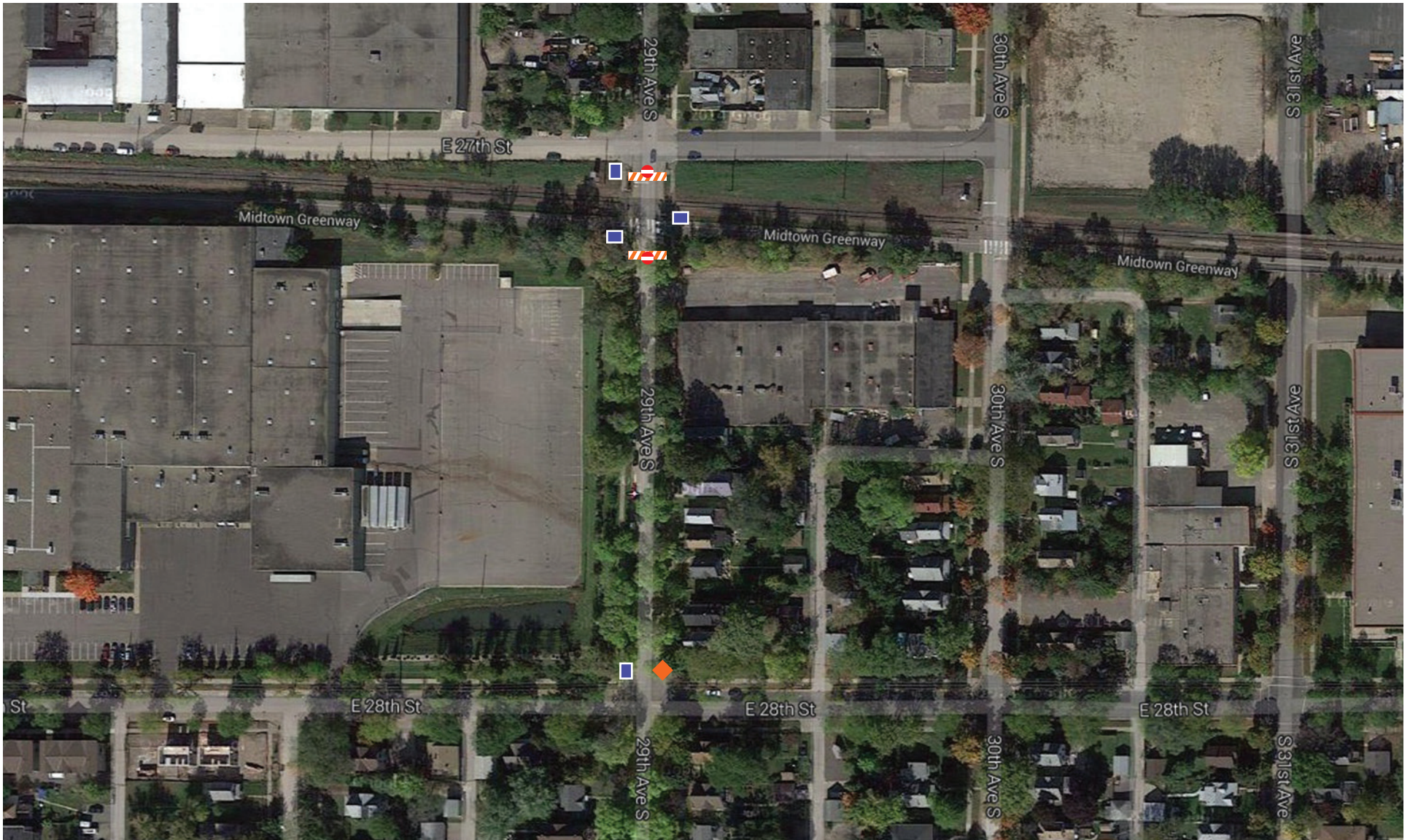


## Test Closure - 29th Ave S at Midtown Greenway

- Type III barricades and signage will reroute vehicle traffic onto adjacent streets
- Bicycle, Pedestrian and Emergency Vehicle Access will be able to circumvent the barricades
- Emergency vehicles may drive over flexible posts and continue north or south on 29th Ave S
- The test would be roughly 6-8 weeks beginning in late spring of this year
- Info signs will be placed to gather citizen feedback via 311
- Public works will take traffic volume tests along 29th Ave S and adjacent streets to determine the effectiveness of the closure



Map Key:

 Barricade

 Road Closed Ahead Signage

 311 Feedback Signage

## Test Closure - 29th Ave S at Midtown Greenway

Mock Up of the barricade at 29th Ave S and 27th St E (looking south)

