

Oakland County Historical Commission and Oakland County Parks and Recreation
in collaboration with the Farmington Historical Society Presents

OAKLAND COUNTY

RODEO THE RAILS

Retrace two main routes of the
Detroit United Railway on an
Oakland County
Interurban Bus Tour
Saturday October 6, 2012

POINTS OF INTEREST

Including the powerhouse in
Farmington, a waiting room site in
West Bloomfield, the Sylvan Lake
Inn site, the sub-station site of
Birmingham and much more

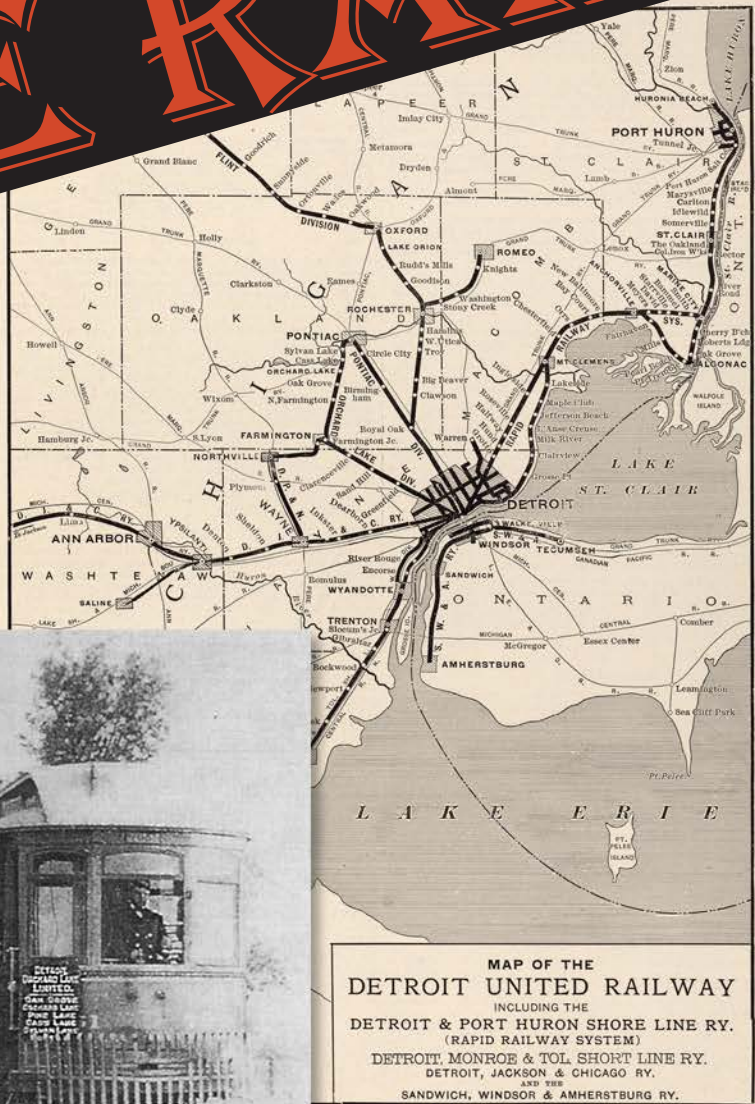
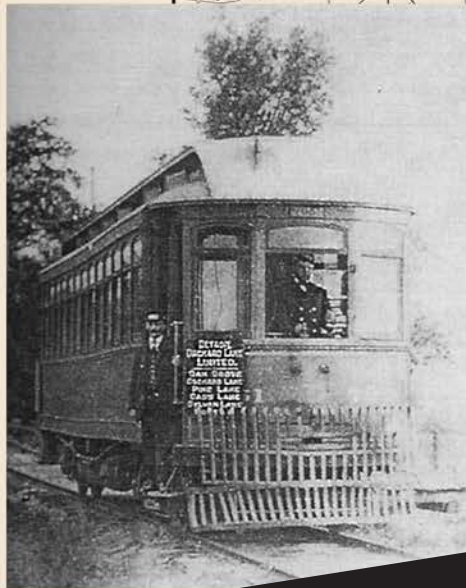
GUEST SPEAKERS

Helen Jane Peters
Sylvan Lake Inn

Ken Schramm
Author of *Detroit's Street Railways*

TOUR CONDUCTOR

Brian Golden, Author of
*Farmington Junction:
A Trolley History*



Cost: \$30/person
Includes lunch at Dick O'Dow's Irish Pub and
informative booklet with pictures, maps and more

Tour registration begins at 8:30 a.m.
Bus departs promptly at 9 a.m. and returns at 1 p.m.

For tickets call Brian Golden at 248.701.8112

The bus has limited seating and it will fill fast



FARMINGTON
HISTORICAL
SOCIETY

Flyer design and bus transportation courtesy of

OAKLAND COUNTY PARKS