



TROPICAL UPDATE

8 AM EDT

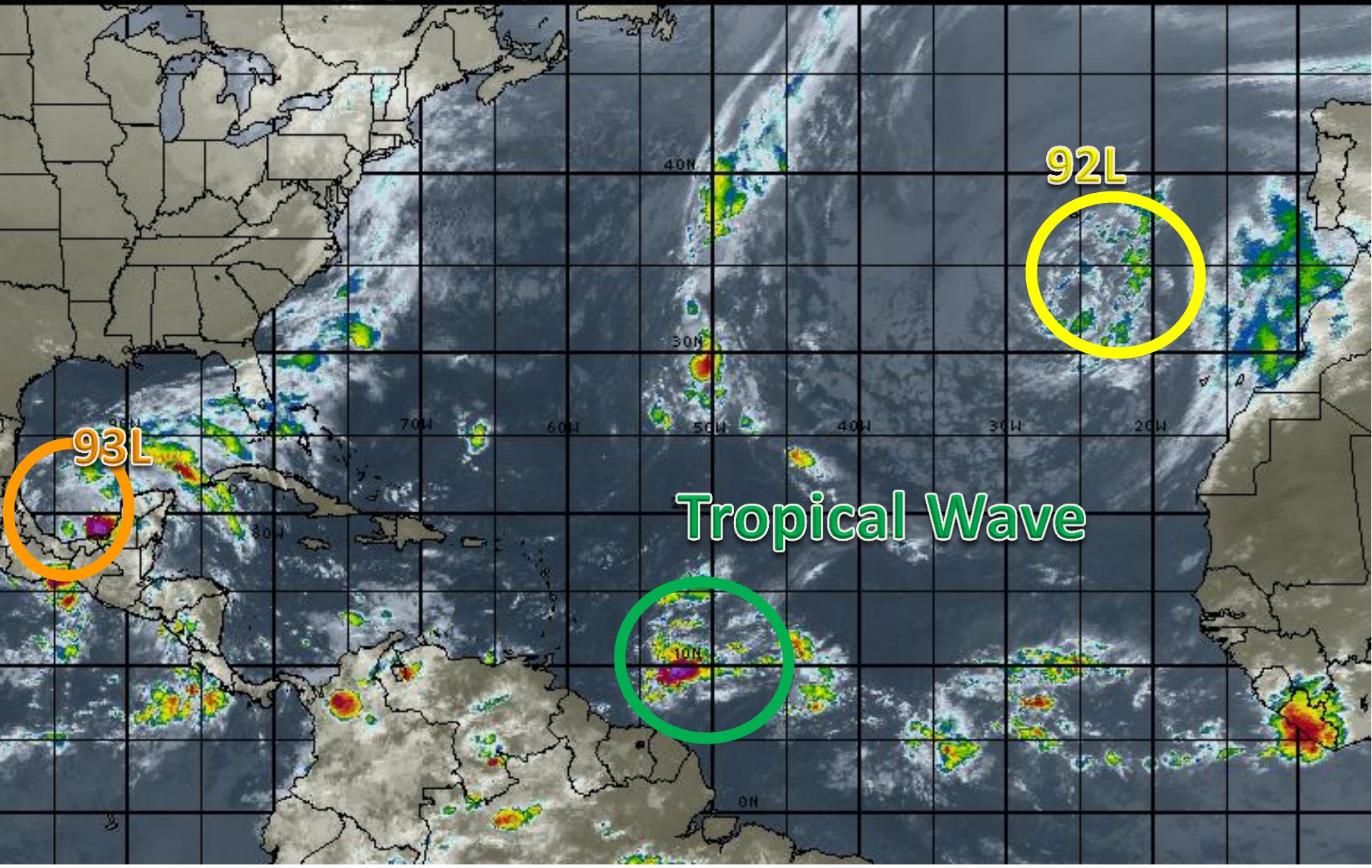
Tuesday, October 22, 2014

Invest 92L and Invest 93L

This update is intended for government and emergency response officials, and is provided for informational and situational awareness purposes only. Forecast conditions are subject to change based on a variety of environmental factors. For additional information, or for any life safety concerns with an active weather event please contact your County Emergency Management or Public Safety Office, local National Weather Service forecast office or visit the National Hurricane Center website at www.nhc.noaa.gov.

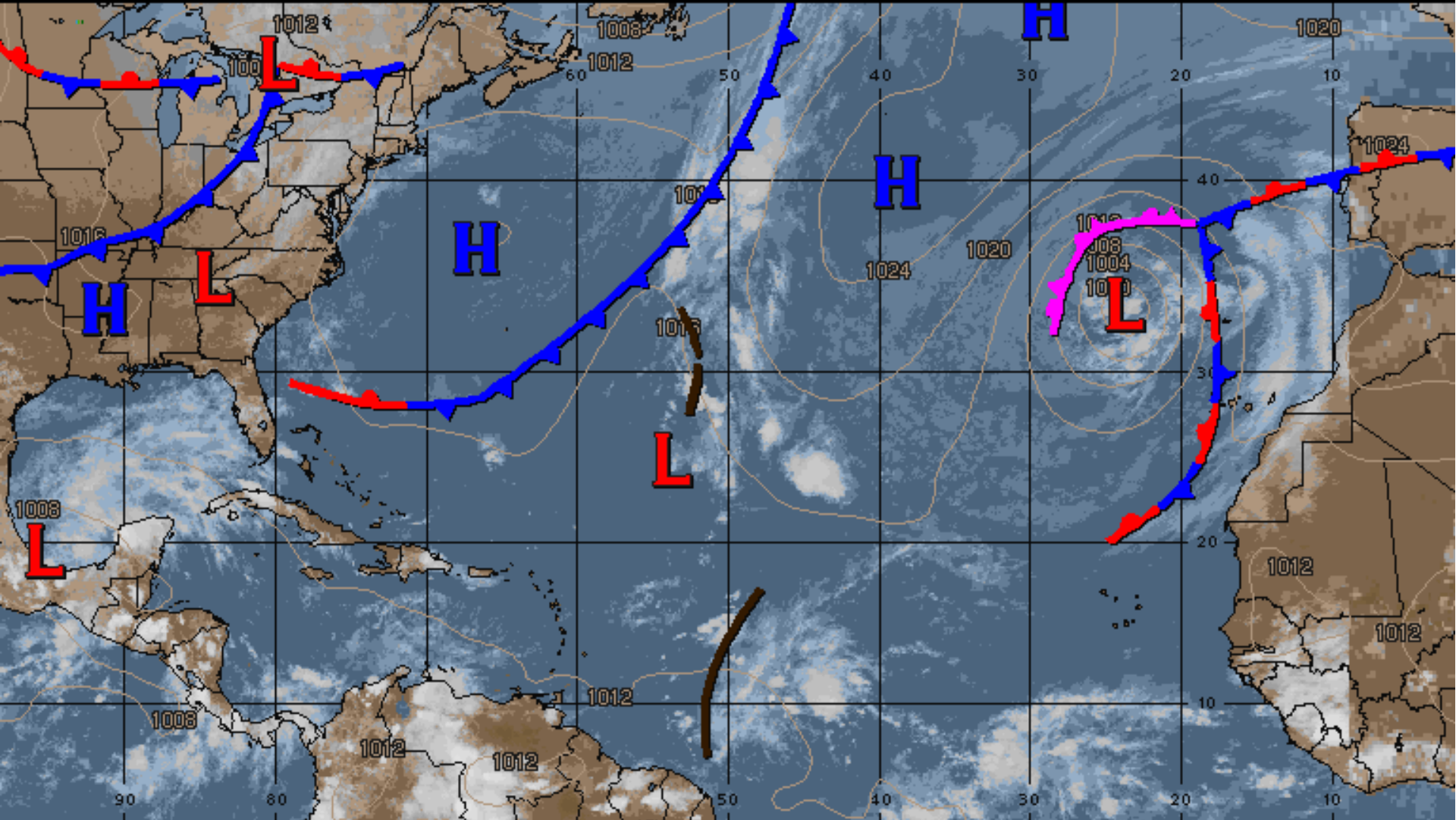
Atlantic Basin Satellite Image

09:00 21-OCT-2014 GMT ©Copyright MSI Corporation <http://www.wsi.com>



Current Tropical Surface Analysis

00:00 21-OCT-2014 GMT ©Copyright WSI Corporation <http://www.wsi.com>



TROPICAL SURFACE ANALYSIS

Valid 7 PM ET 20-Oct-14

WAVE DEPRESSION STORM HURRICANE





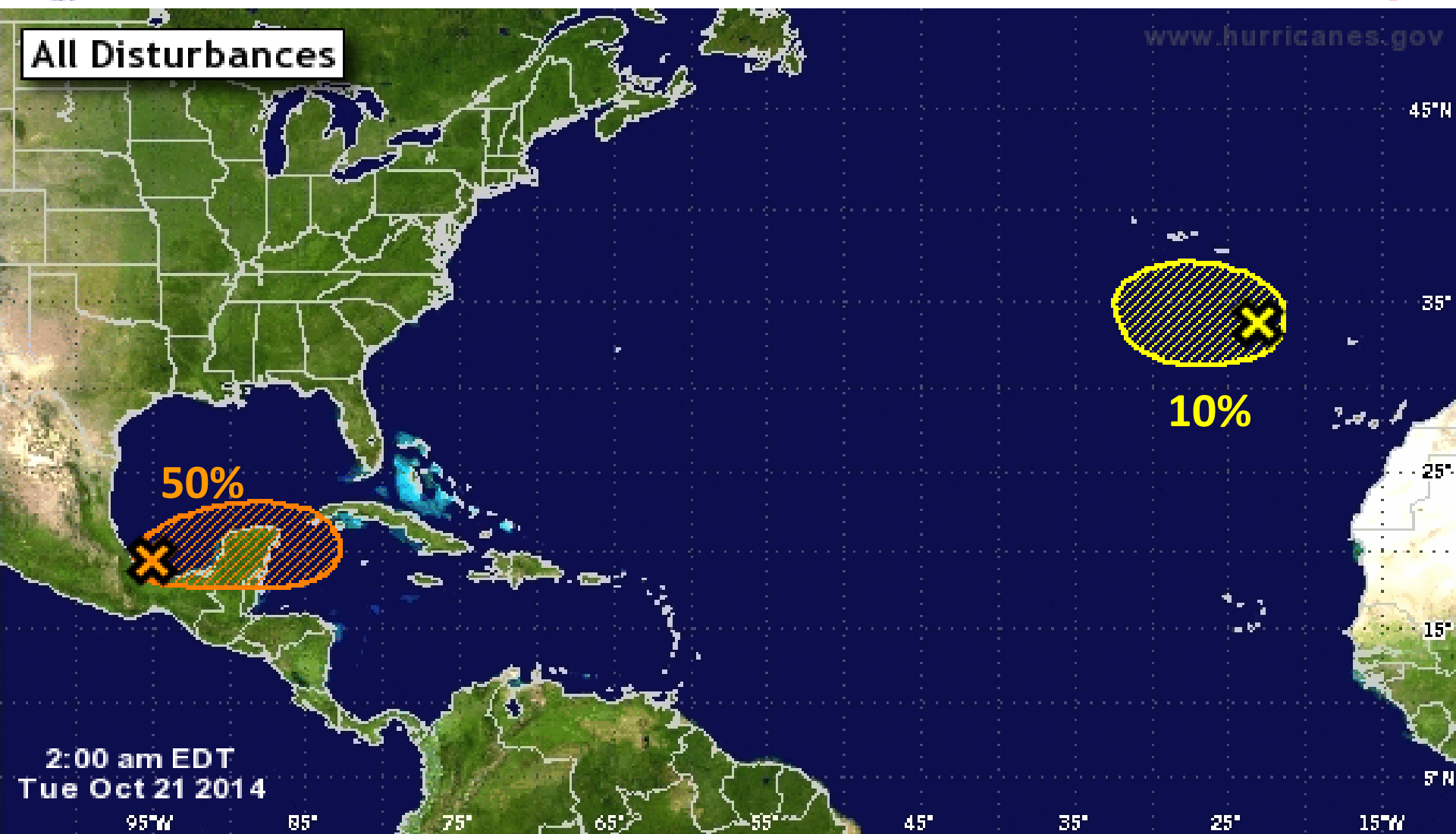
Experimental 5-Day Graphical Tropical Weather Outlook

National Hurricane Center Miami, Florida



www.hurricanes.gov

All Disturbances



2:00 am EDT
Tue Oct 21 2014

95°W 85° 75° 65° 55° 45° 35° 25° 15°W

10%

50%

Tropical Cyclone Formation Potential for the 5-Day Period Ending 2:00 am EDT Sun Oct 26 2014

Chance of Cyclone Formation in 5 Days: ■ Low < 30% ■ Medium 30-50% ■ High > 50%

X indicates current disturbance location; shading indicates potential formation area.

Invest 93L

2 AM Tue Oct 21 2014

Position 19.2 95.0W

Maximum Winds 30 mph

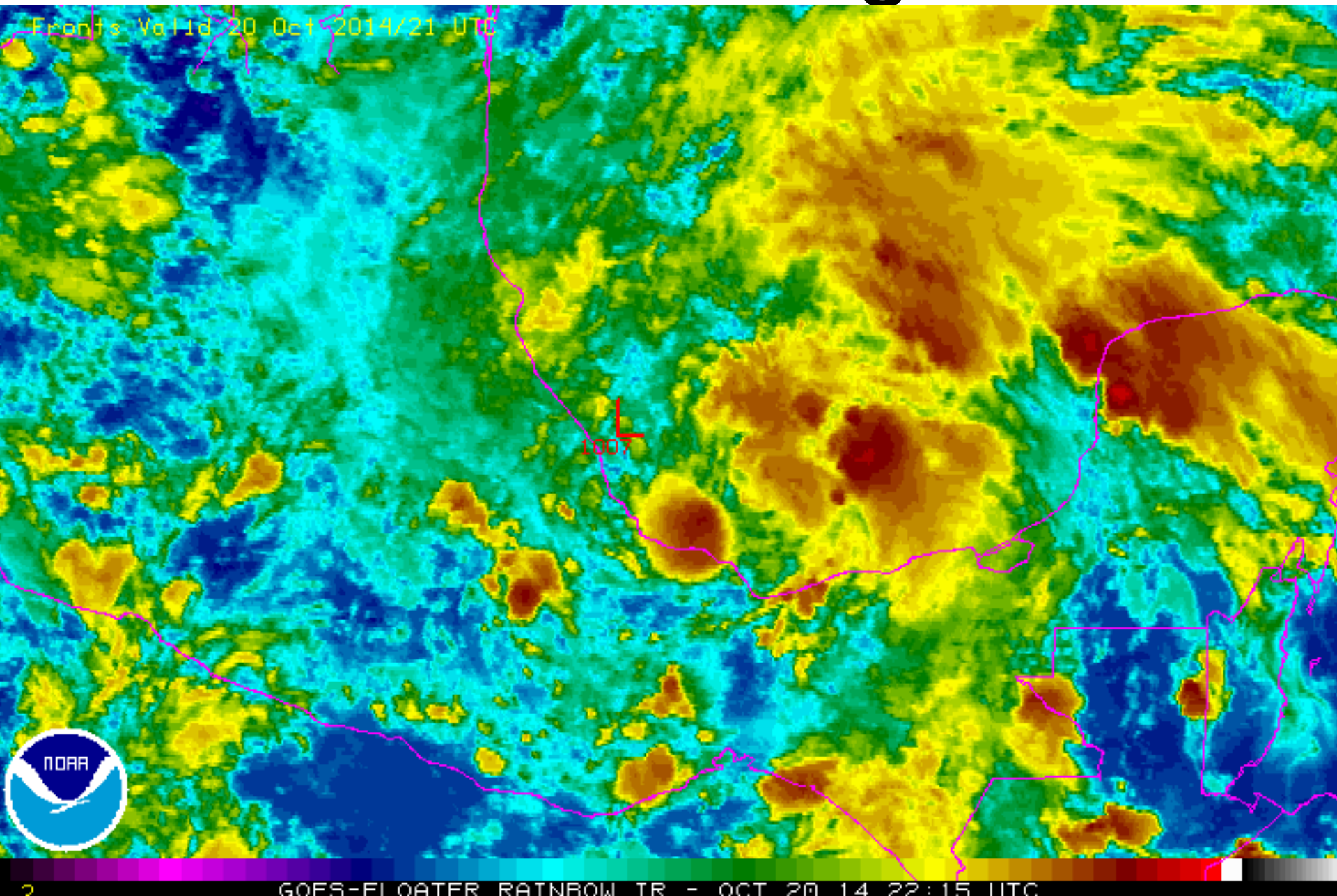
Movement ESE at 3 mph

Blue Marble basemap imagery courtesy NASA

Satellite 11:47 AM UTC



Satellite Image



Forecast Track and Timing of 93L

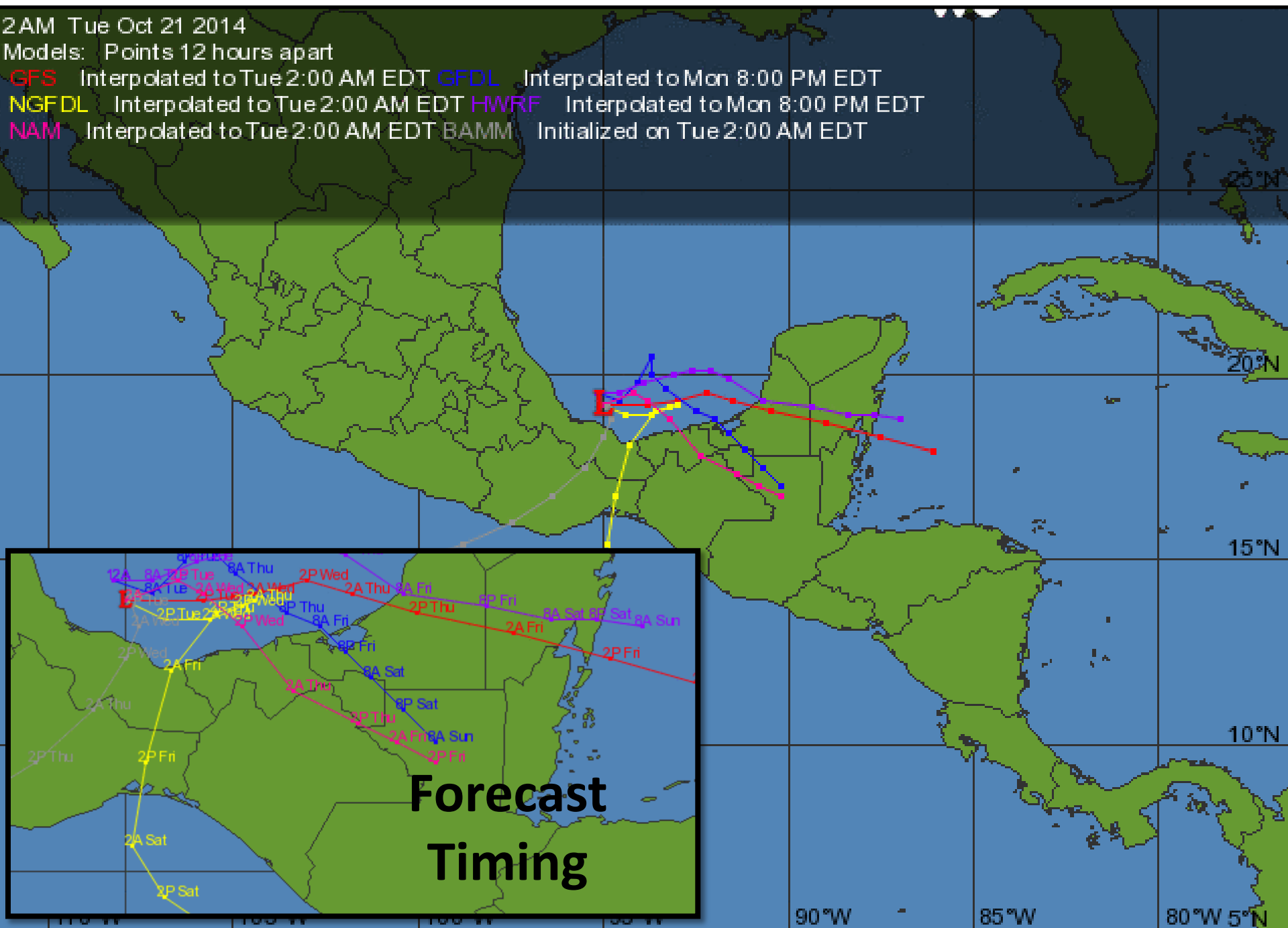
2AM Tue Oct 21 2014

Models: Points 12 hours apart

GFS Interpolated to Tue 2:00 AM EDT **GFDL** Interpolated to Mon 8:00 PM EDT

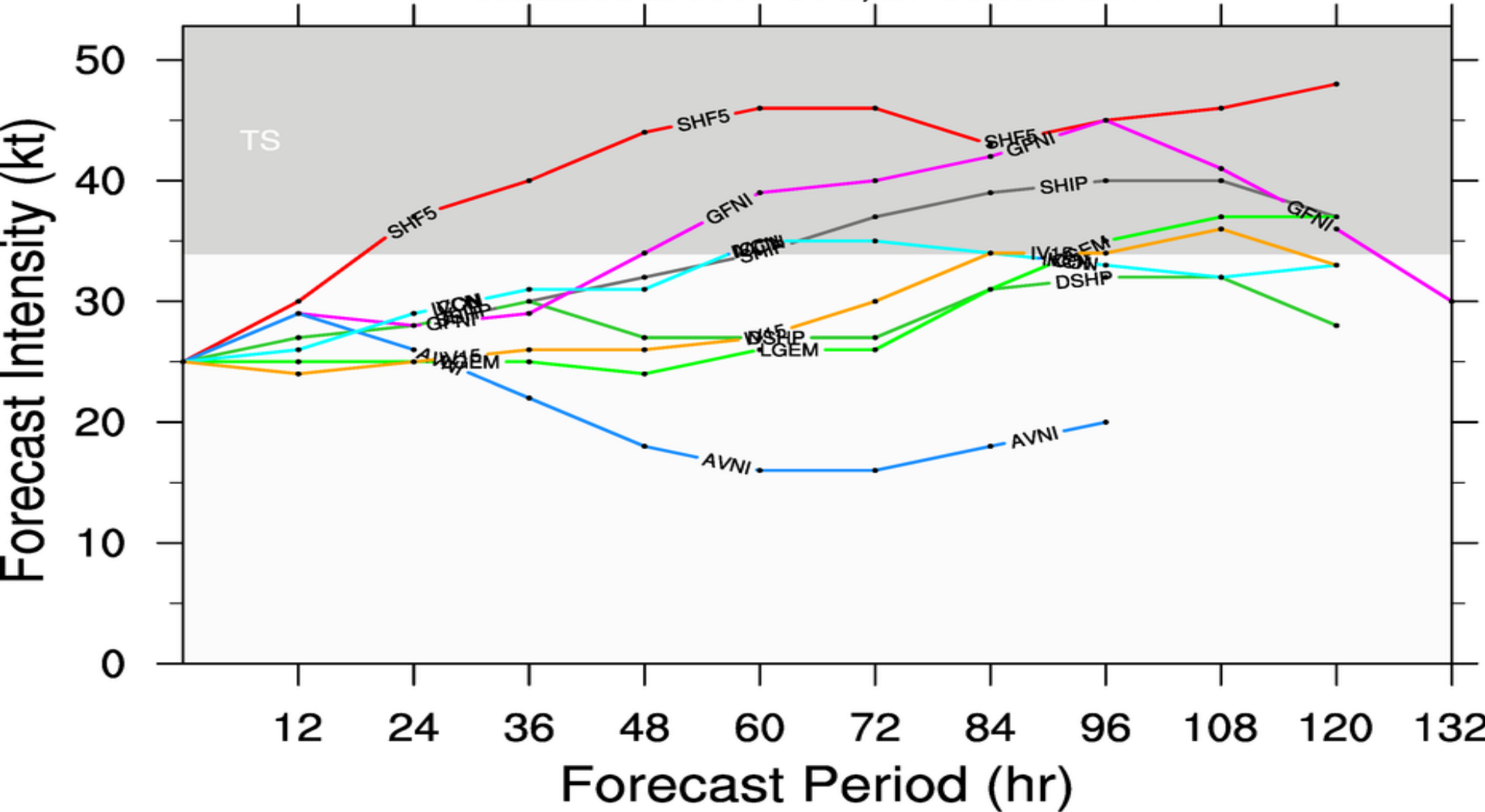
NGFDL Interpolated to Tue 2:00 AM EDT **HWRF** Interpolated to Mon 8:00 PM EDT

NAM Interpolated to Tue 2:00 AM EDT **BAMM** Initialized on Tue 2:00 AM EDT



Forecast Intensity of 93L

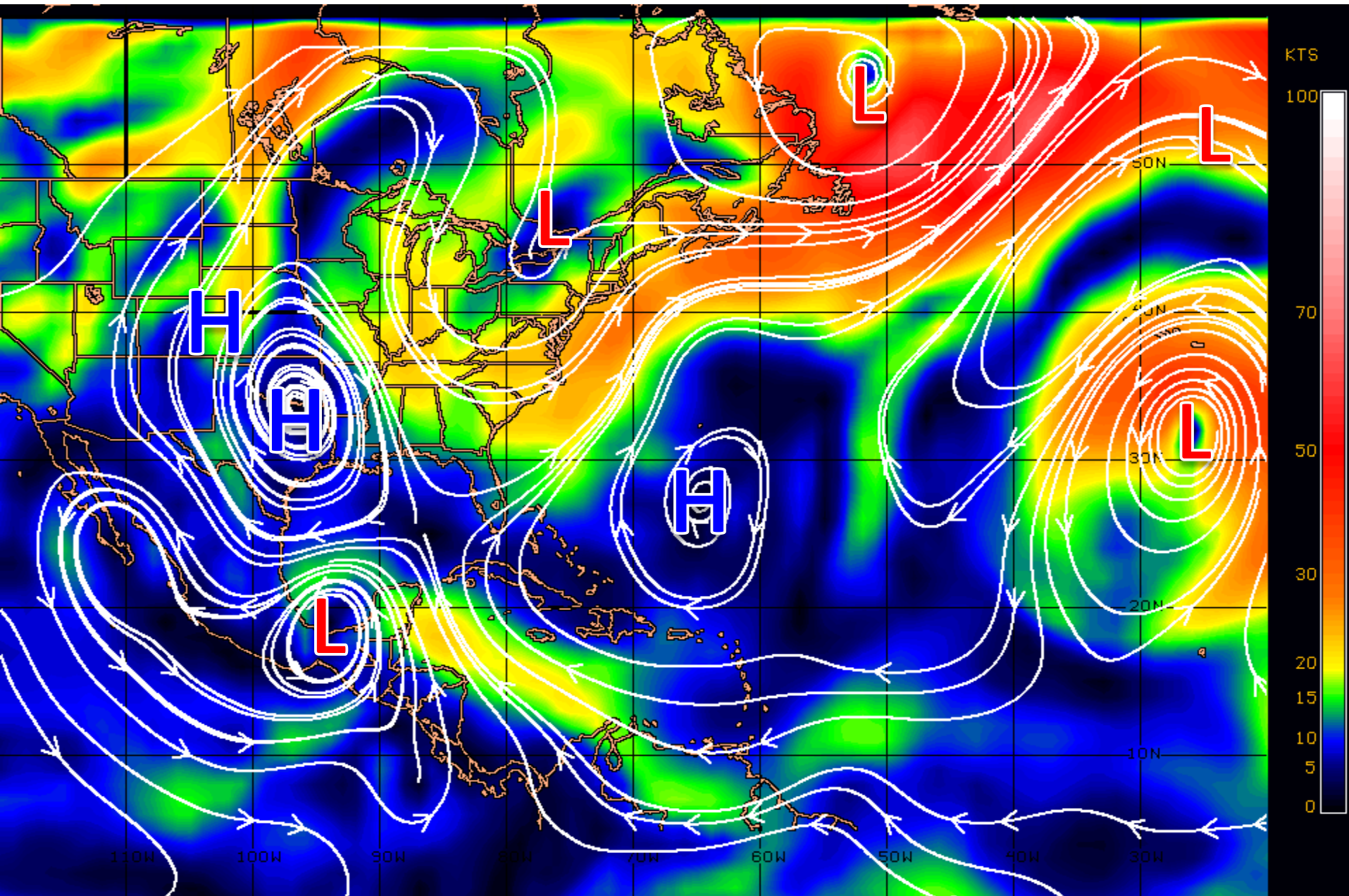
Early-cycle intensity guidance
initialized at 0600 UTC, 21 October 2014



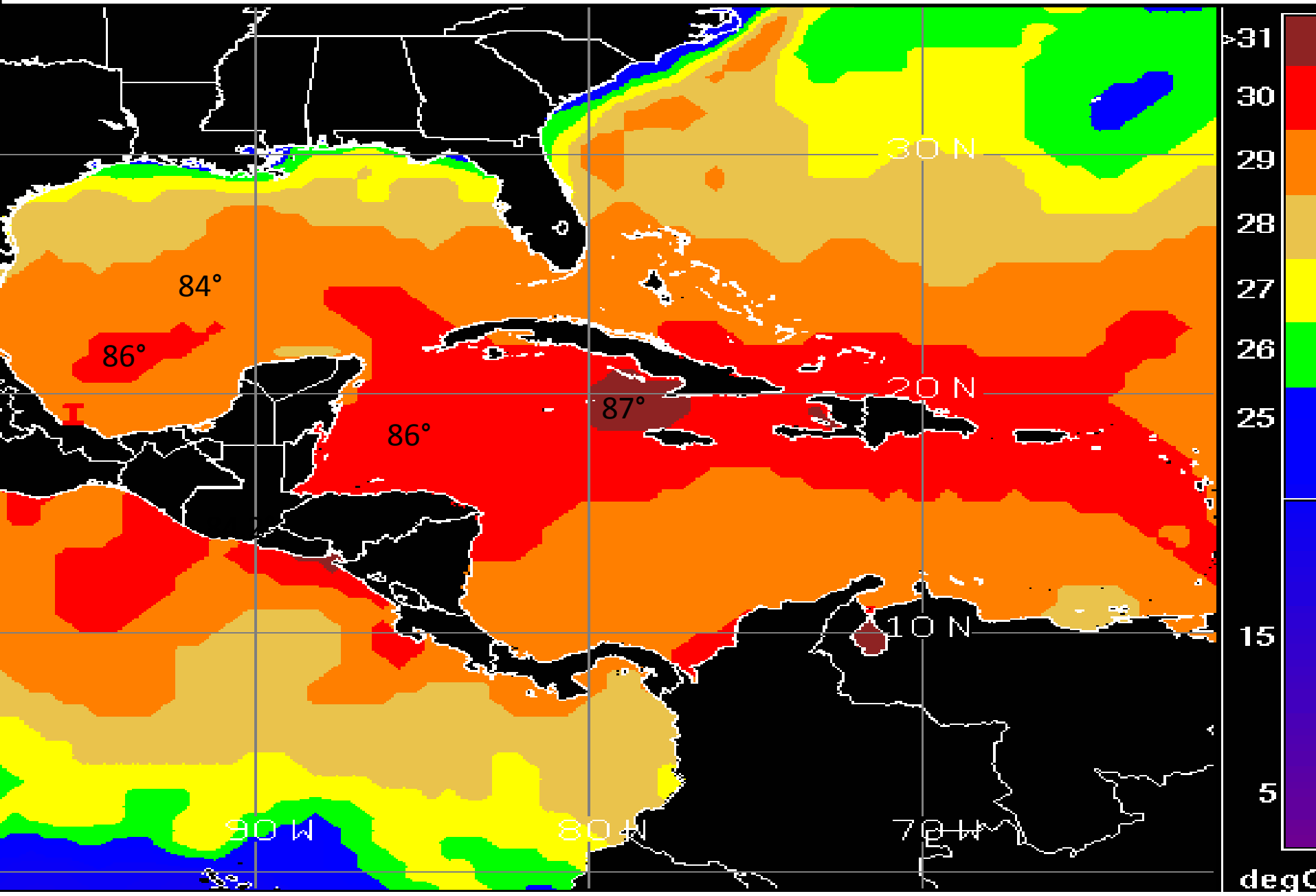
By using this plot, the user agrees to the UCAR Terms of Use
which can be accessed at: <http://www2.ucar.edu/terms-of-use>

Plot generated at 0749 UTC 21 October 2014

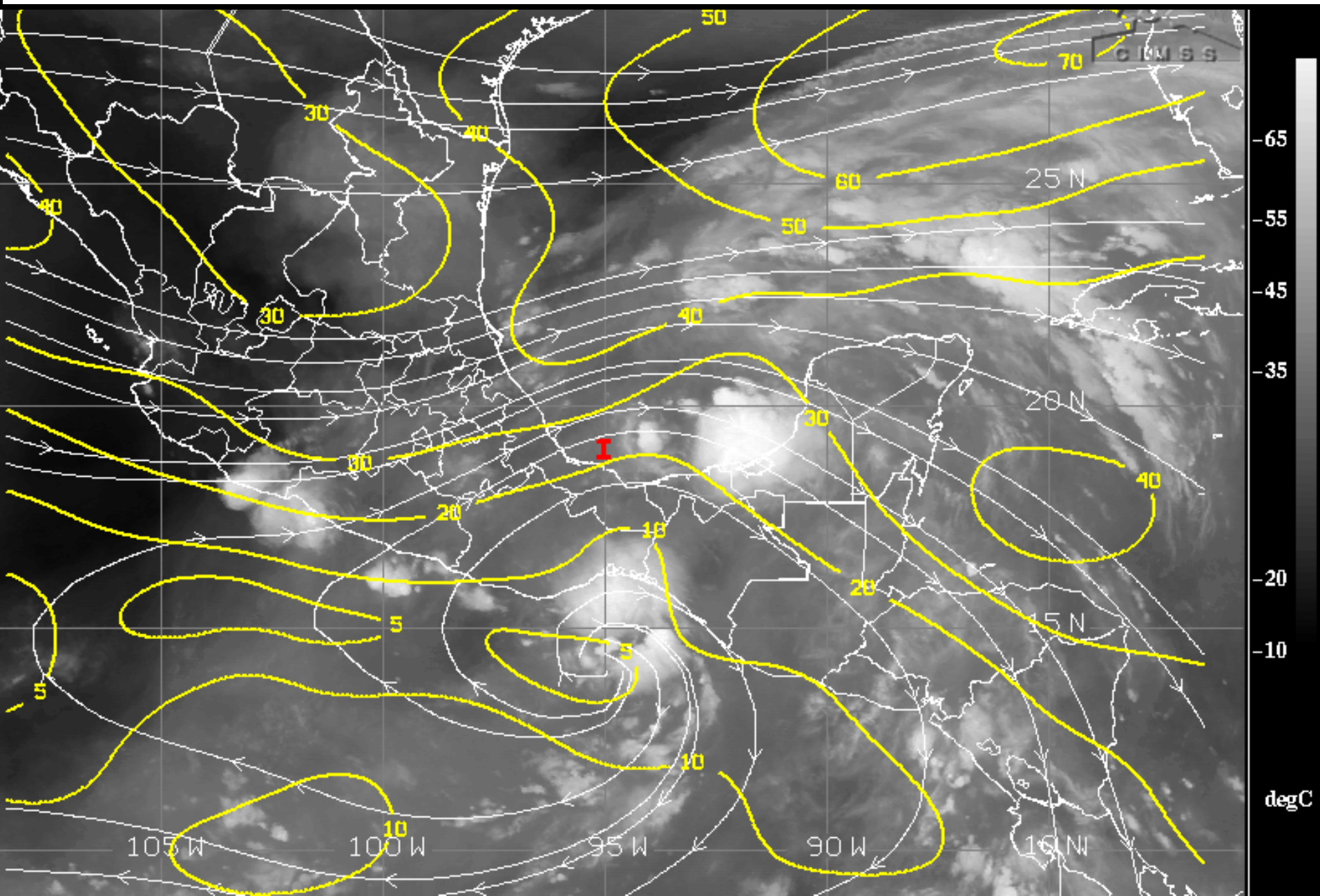
Steering Currents



Sea Surface Temperatures

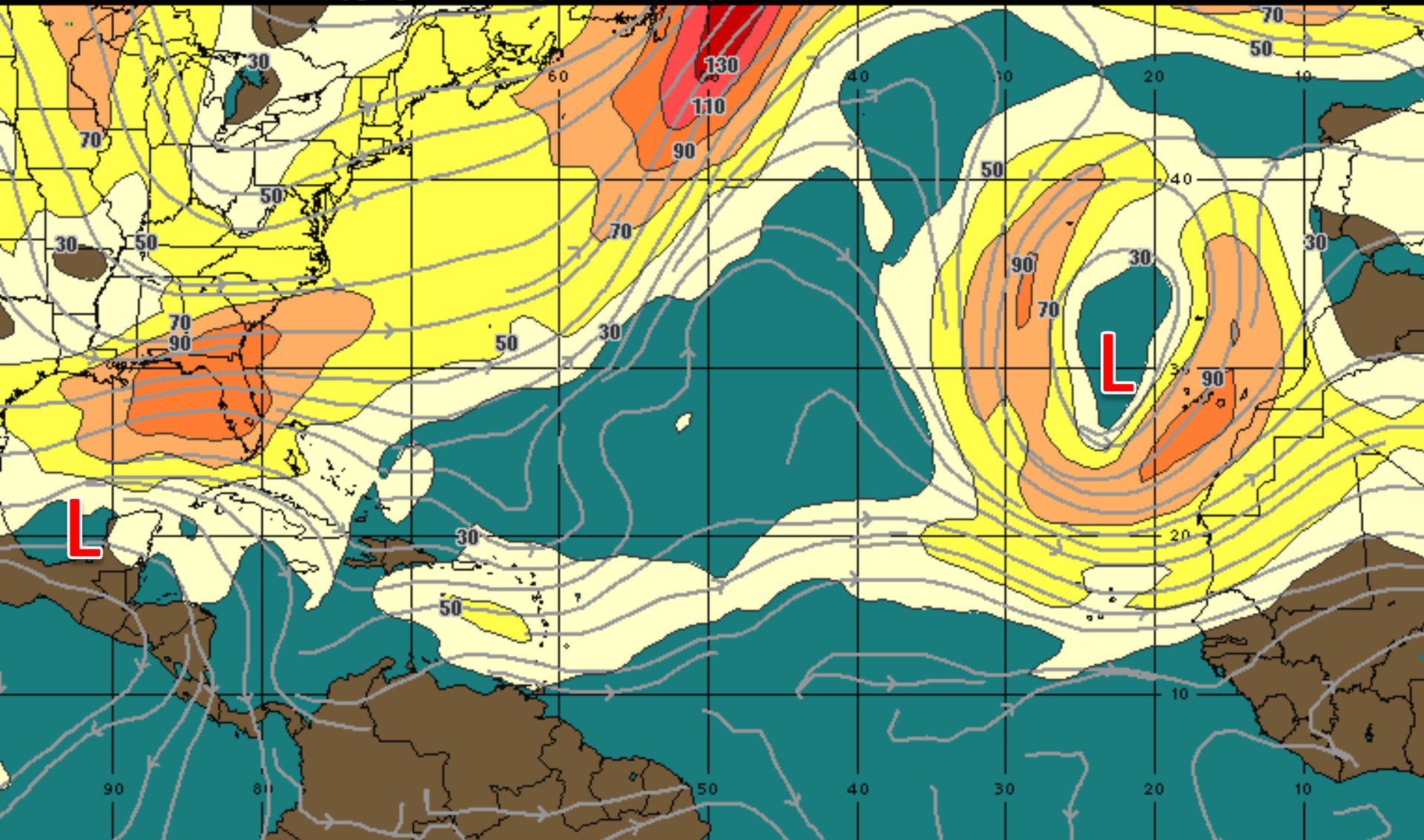


Current Wind Shear (KTS)



Forecast Wind Shear-24 Hours (Wednesday)

00:00 21-OCT-2014 GMT ©Copyright WSI Corporation <http://www.wsi.com>



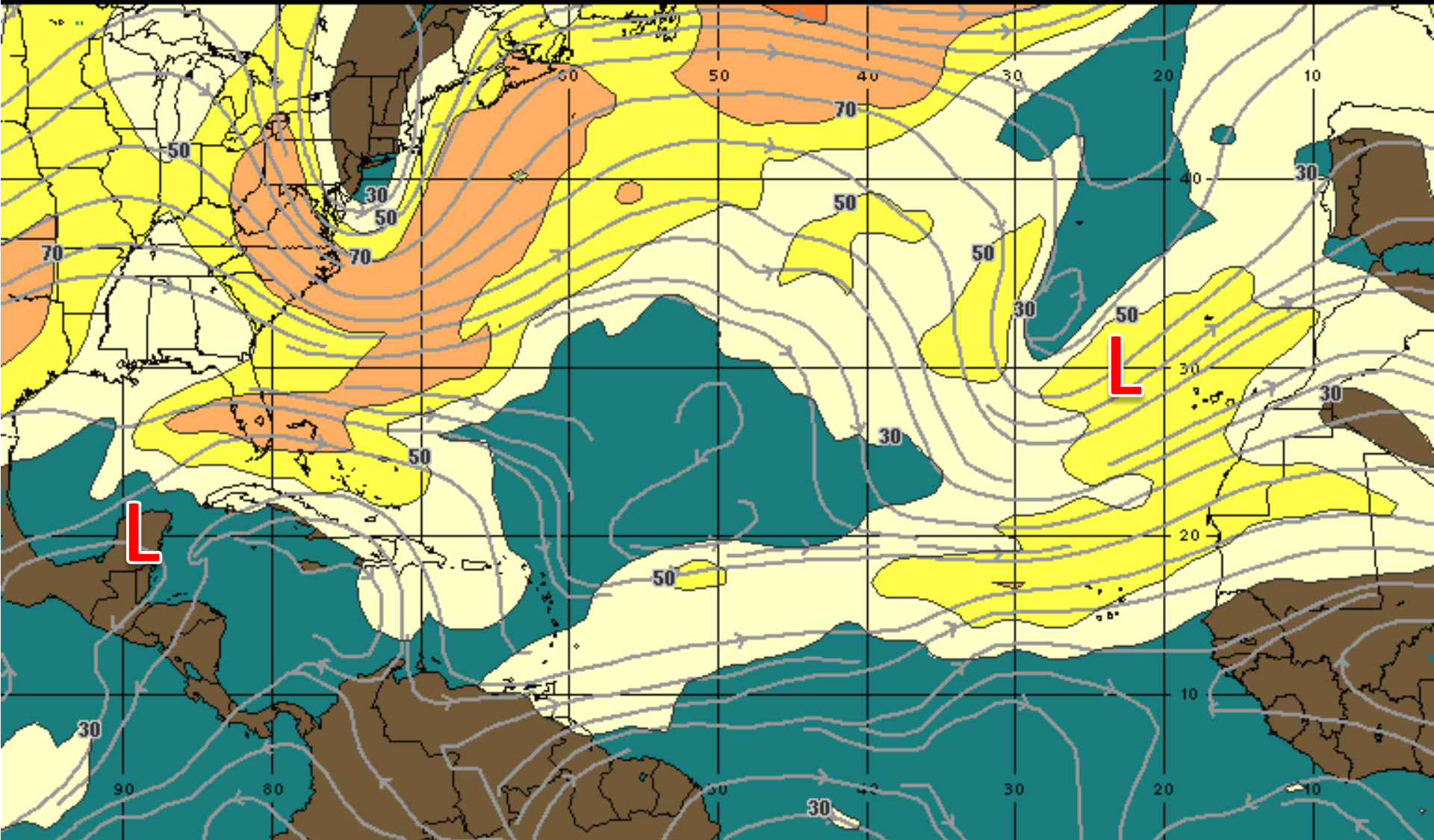
200Mb Wind Speed / Streamline Analysis
Valid 0000 UTC Tue 21-Oct-14

30 mph 50 70 90 110 130 150+

WSI®

Forecast Wind Shear-48 Hours (Thursday)

00:00 23-OCT-2014 GMT ©Copyright WSI Corporation <http://www.wsi.com>



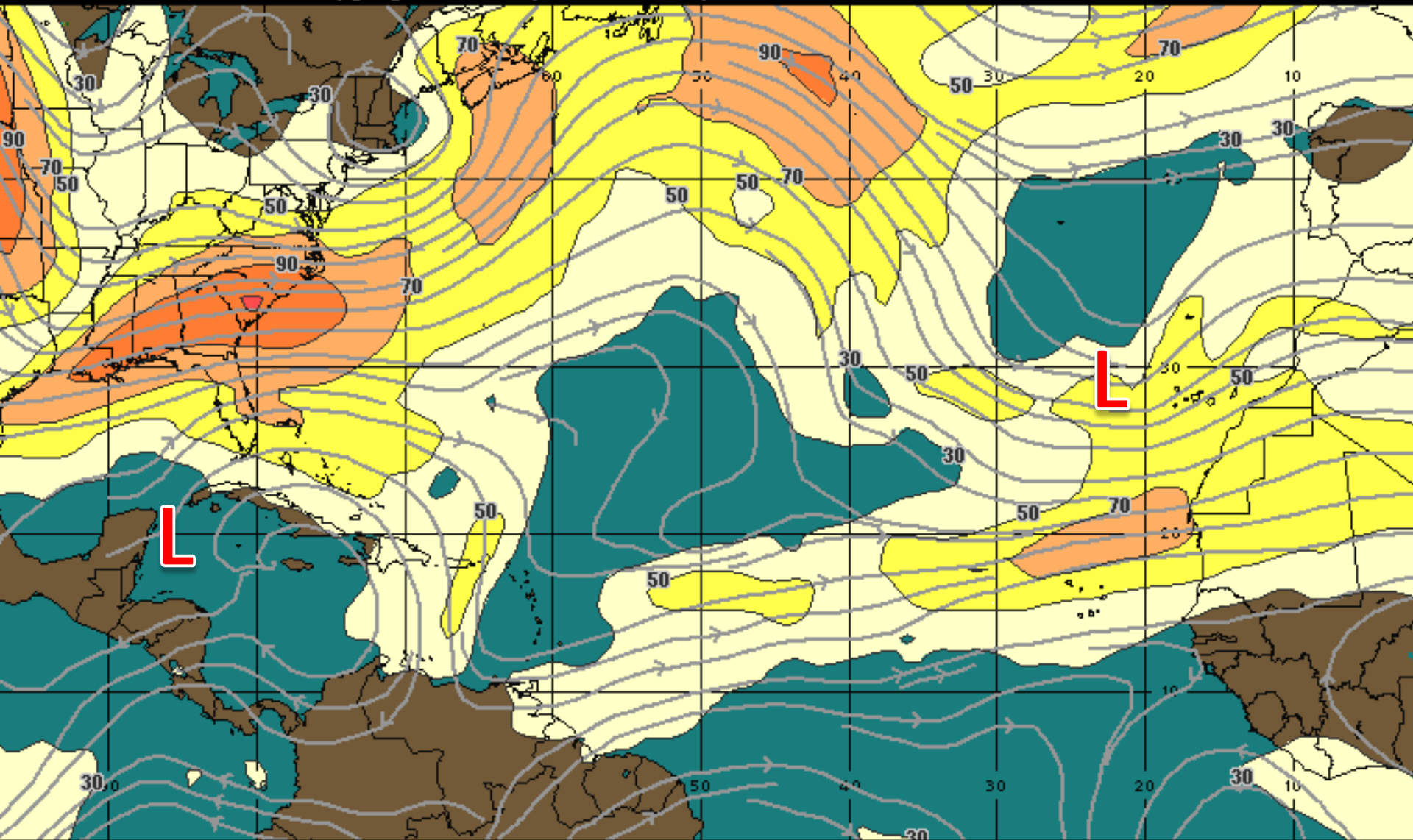
200Mb Wind Speed / Streamline Forecast
Valid 0000 UTC Thu 23-Oct-14

30 mph 50 70 90 110 130 150+

WSI[®]

Forecast Wind Shear-72 Hours (Thursday)

00:00 24-OCT-2014 GMT ©Copyright WSI Corporation <http://www.wsi.com>

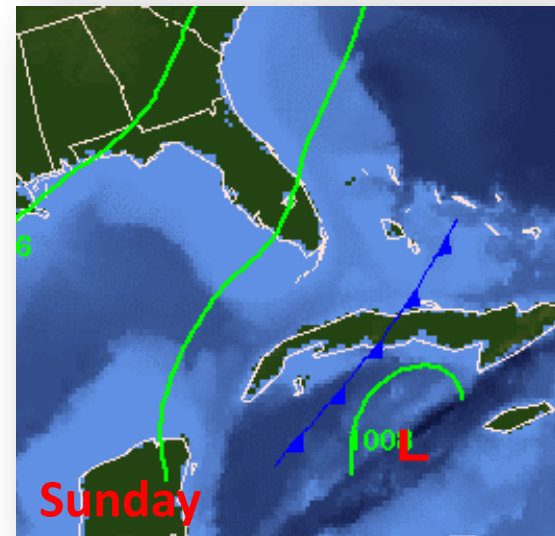
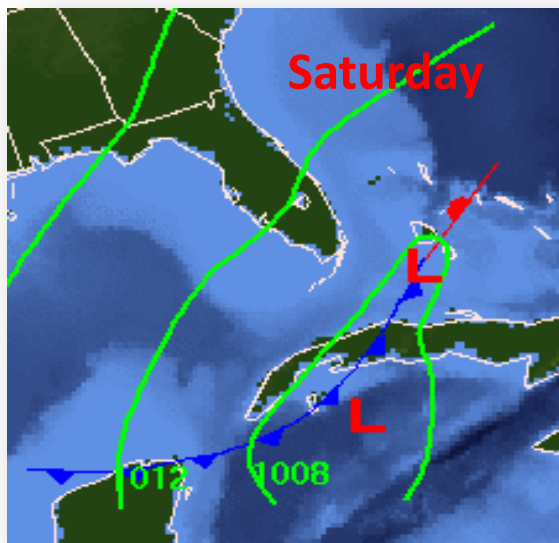
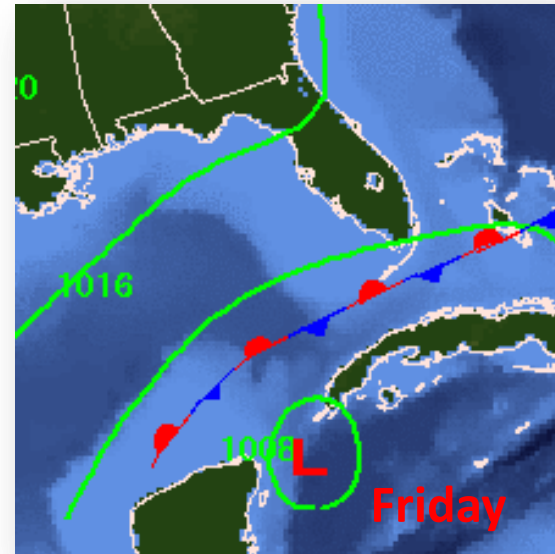
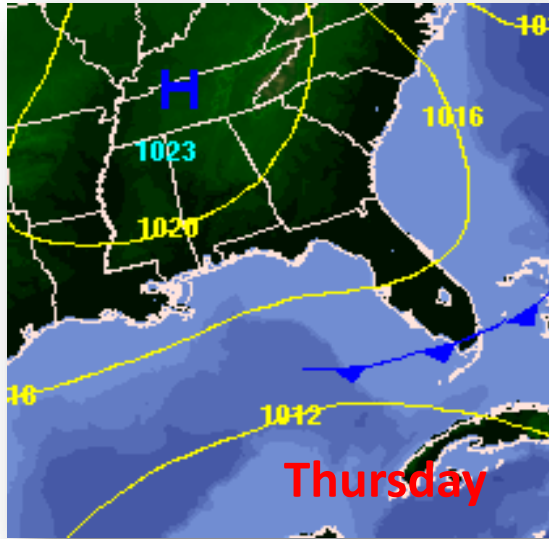


200Mb Wind Speed / Streamline Forecast
Valid 0000 UTC Fri 24-Oct-14

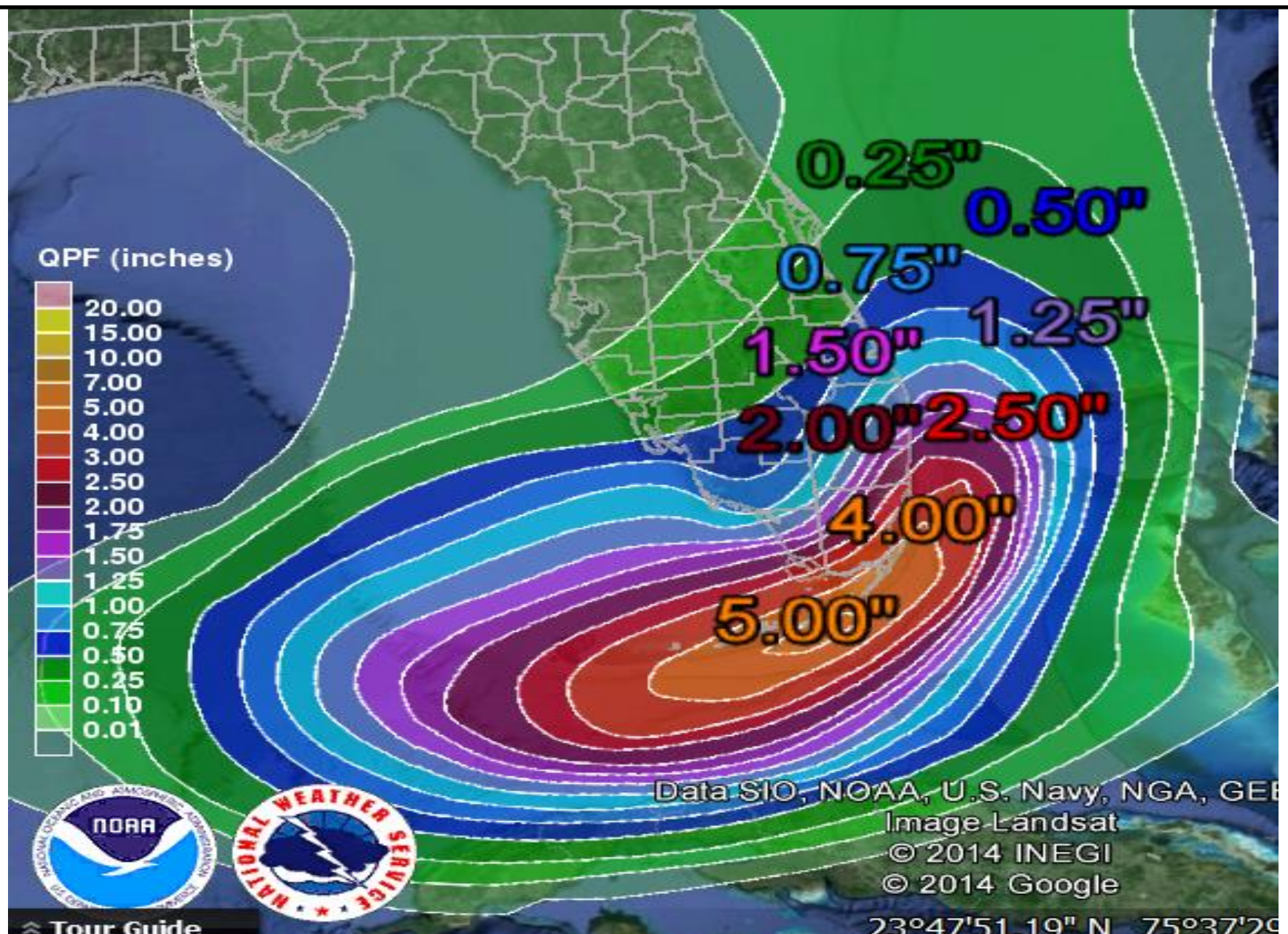
30 mph 50 70 90 110 130 150+

WSI®

Surface Map Forecast



7 Day Rainfall Forecast



Invest 92L

8 PM Mon Oct 20 2014

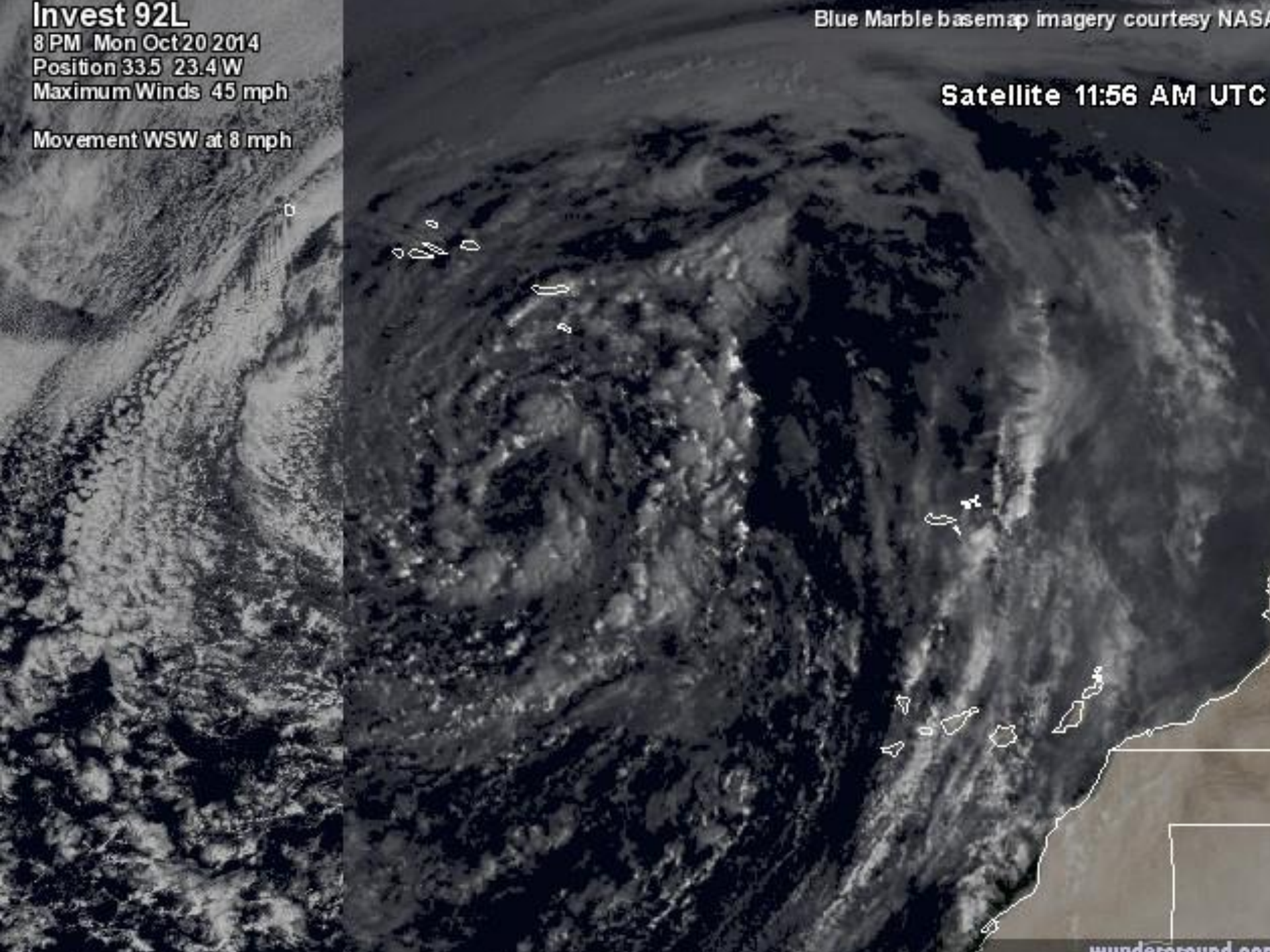
Position 33.5 23.4W

Maximum Winds 45 mph

Movement WSW at 8 mph

Blue Marble basemap imagery courtesy NASA

Satellite 11:56 AM UTC



Outlook:

92L:

- A large non-tropical low pressure system, designated as invest 92L, in the far eastern Atlantic ocean is producing strong winds of 45 mph.
- This system is now tracking over warmer waters and could gain tropical characteristics over the next day as the system moves slowly westward.
- On Thursday, increasing wind shear will begin to limit 92L chances for development.
- The NHC has placed this systems development chances at 10% in the next five days.

93L:

- An area of low pressure in the far southwestern Bay of Campeche has become better defined , however, showers and storms still remain disorganized due to increased wind shear.
- This system is forecast to remain over the warm waters of the Bay of Campeche over the next 36 to 48 hours as the system moves slowly eastward toward the Western Yucatan Peninsula.
- Forecast models then take the system across the Yucatan later in the week before the system merges with a frontal boundary south of Cuba in the northwestern Caribbean sea on Friday or Saturday.
- The NHC has placed this systems development chances at 50% over the next 5 days.
- Intensity models remain in disagreement, which is common when forecasting weak systems, and the more reliable models are keeping the system below tropical storm strength due to increasing wind shear and possible land interaction with Mexico.
- A Hurricane Hunter reconnaissance aircraft may investigate 93L this afternoon, if conditions warrant.

Florida Outlook:

- 92L is not forecast to impact Florida and will likely remain far out at sea.
- Regardless of the development or track of 93L, increased rainfall is forecast to fall across South Florida late this week as 93L will send tropical moisture northward into the southern Florida peninsula increasing rain chances (and the potential for isolated strong storms) late Tuesday through Saturday with the heaviest rainfall forecast to occur on Thursday and Friday.
- Rainfall forecasts through Sunday are currently placing up to 4 inches of rain across southern portions of the Florida Peninsula and up to 5 inches in the Florida Keys with isolated higher amounts possible. This could create flooding issues and flash flooding in urban areas may result late this week.

*Another briefing packet will be sent [this afternoon](#). For more information please visit the National Hurricane Center Webpage at www.nhc.noaa.gov



TROPICAL UPDATE

Created by:

Tiffany Hersey, Deputy State Meteorologist

Tiffany.Hersey@em.myflorida.com

State Meteorological Support Unit

Florida Division of Emergency

Management