



# **TROPICAL UPDATE**

**11 AM EDT**

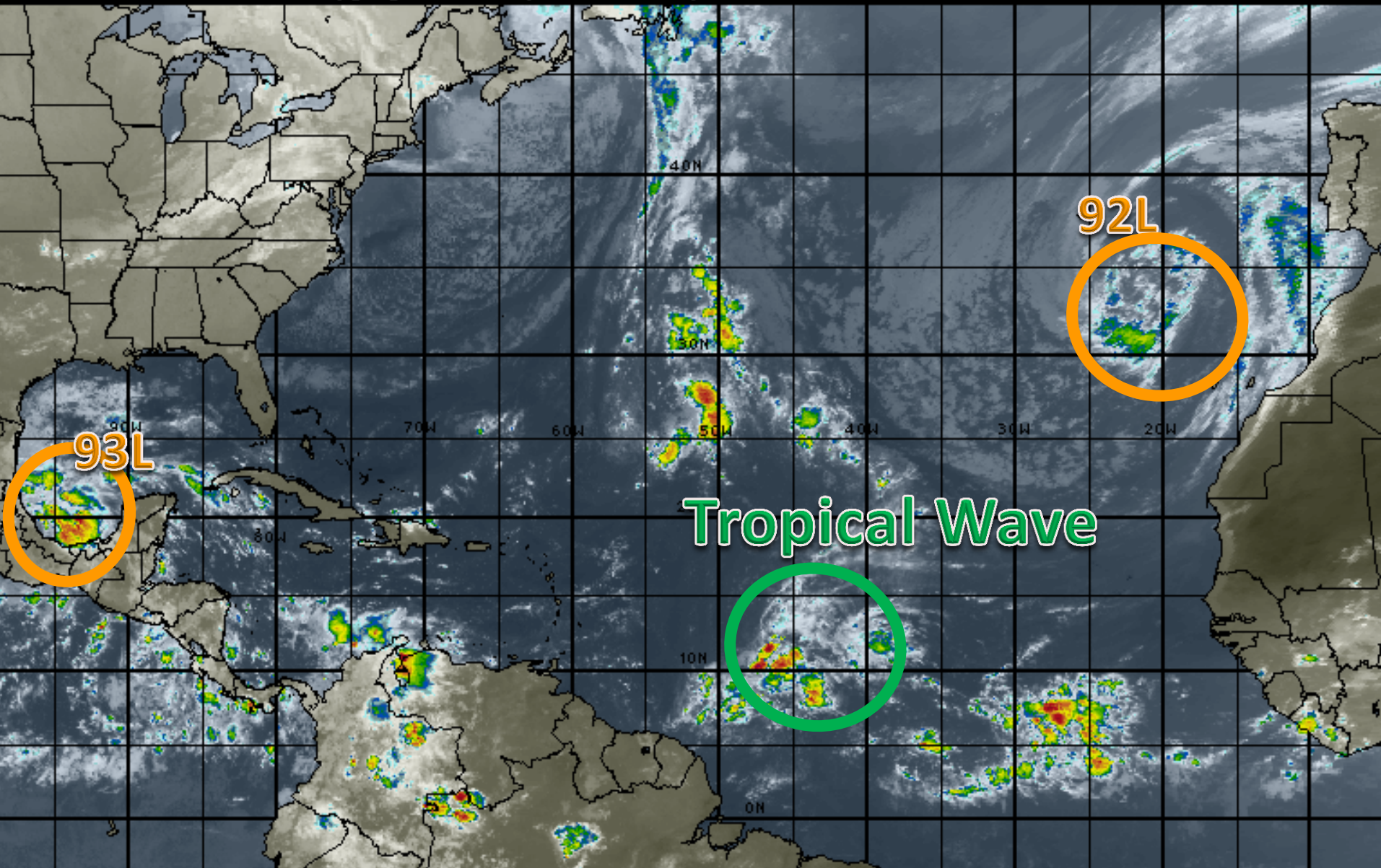
**Monday, October 20, 2014**

**Invest 92L and Invest 93L**

**This update is intended for government and emergency response officials, and is provided for informational and situational awareness purposes only. Forecast conditions are subject to change based on a variety of environmental factors. For additional information, or for any life safety concerns with an active weather event please contact your County Emergency Management or Public Safety Office, local National Weather Service forecast office or visit the National Hurricane Center website at [www.nhc.noaa.gov](http://www.nhc.noaa.gov).**

# Atlantic Basin Satellite Image

12:00 20-OCT-2014 GMT ©Copyright MSI Corporation <http://www.usi.com>

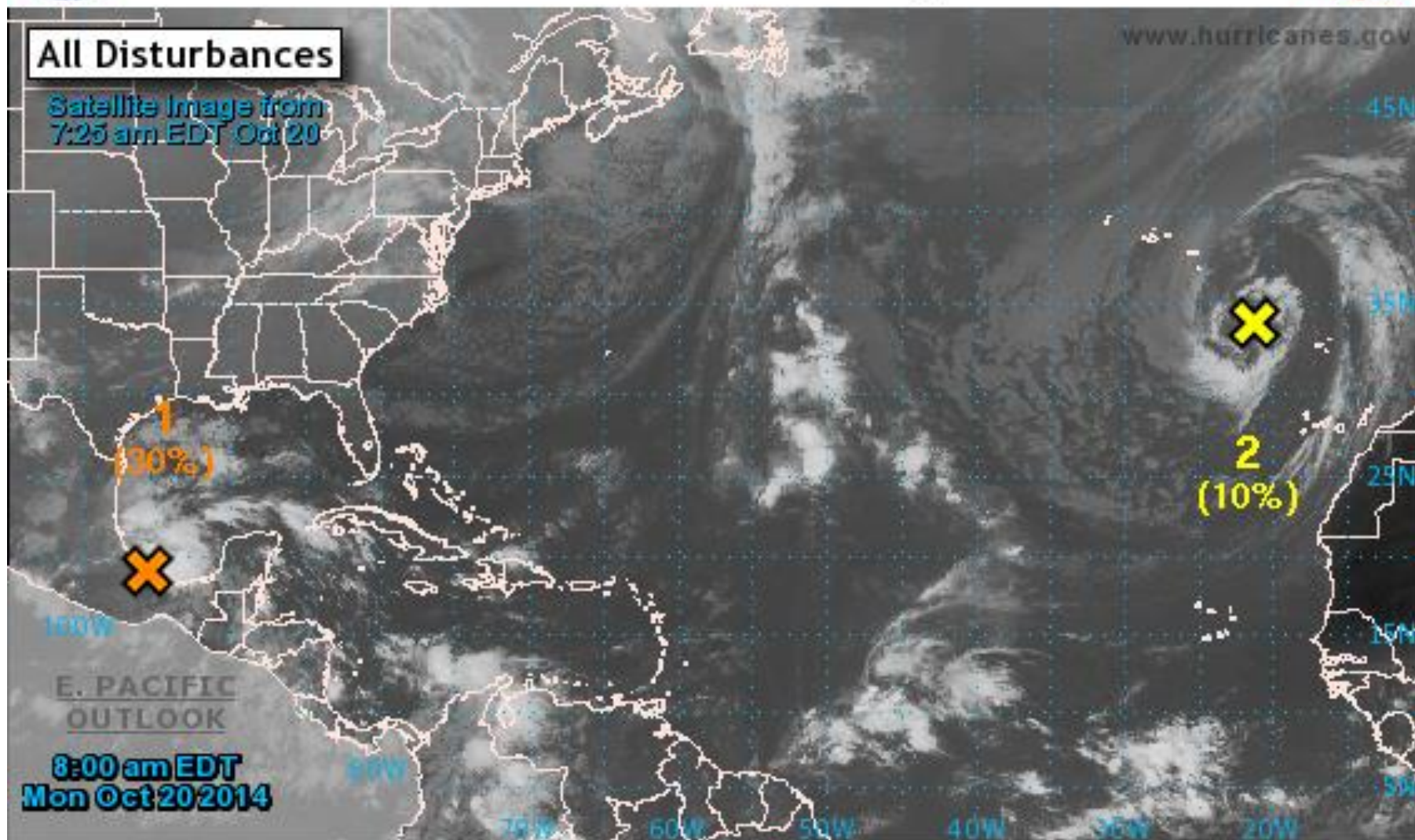






# 2-Day Graphical Tropical Weather Outlook

National Hurricane Center Miami, Florida



Current Disturbances and 2-Day Cyclone Formation Chance: < 30% 30-50% > 50%

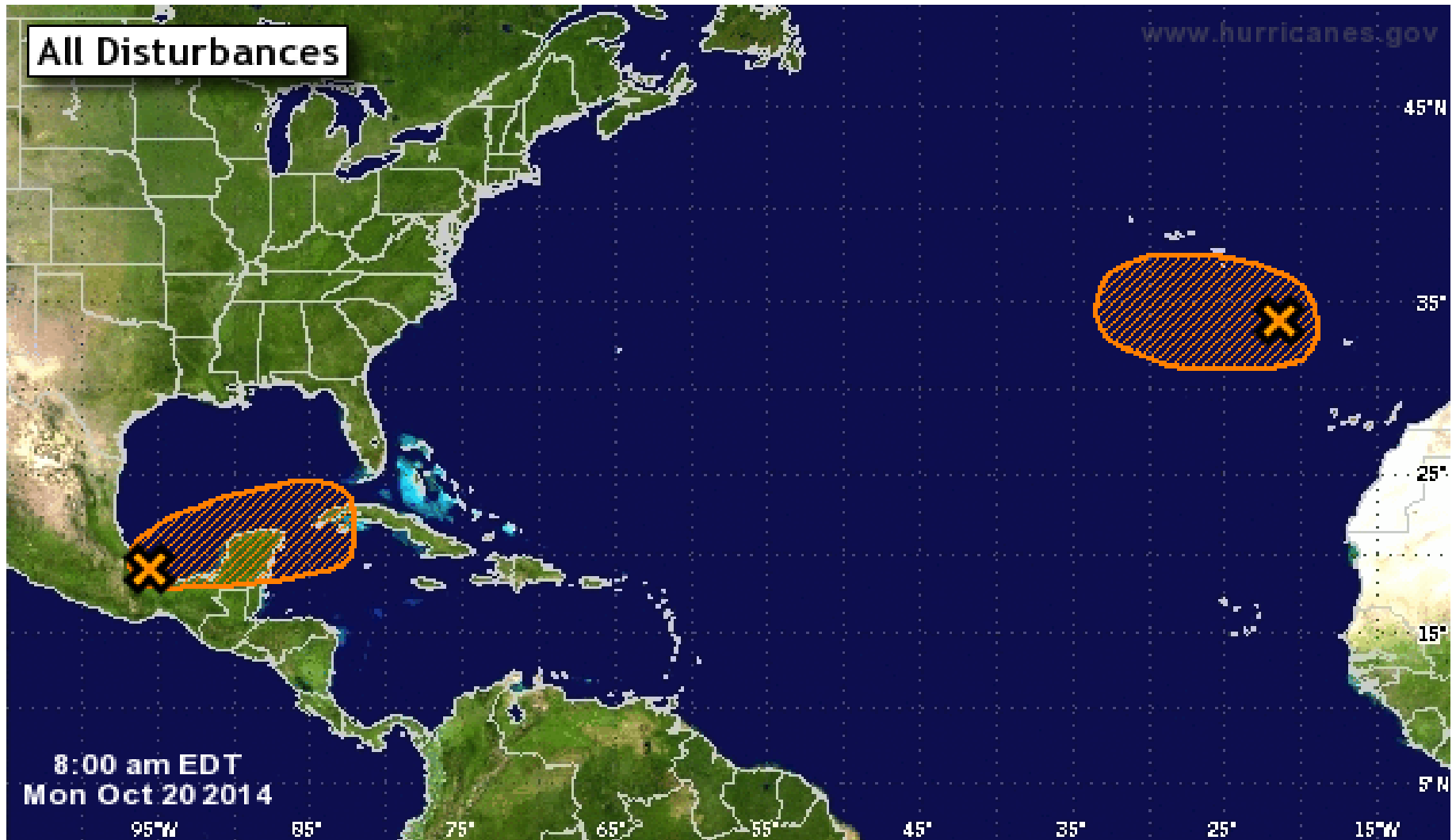
Tropical or Sub-Tropical Cyclone: Depression Storm Hurricane

Post-Tropical Cyclone Remnants



# Experimental 5-Day Graphical Tropical Weather Outlook

National Hurricane Center Miami, Florida



Tropical Cyclone Formation Potential for the 5-Day Period Ending 8:00 am EDT Sat Oct 25 2014

Chance of Cyclone Formation in 5 Days: ■ Low < 30% ■ Medium 30-50% ■ High > 50%

X indicates current disturbance location; shading indicates potential formation area.



# Invest 93L

8 AM Mon Oct 20 2014

Position 19.5 95.4W

Maximum Winds 30 mph

Movement NE at 3 mph

Blue Marble basemap imagery courtesy NASA

Satellite 12:05 PM UTC



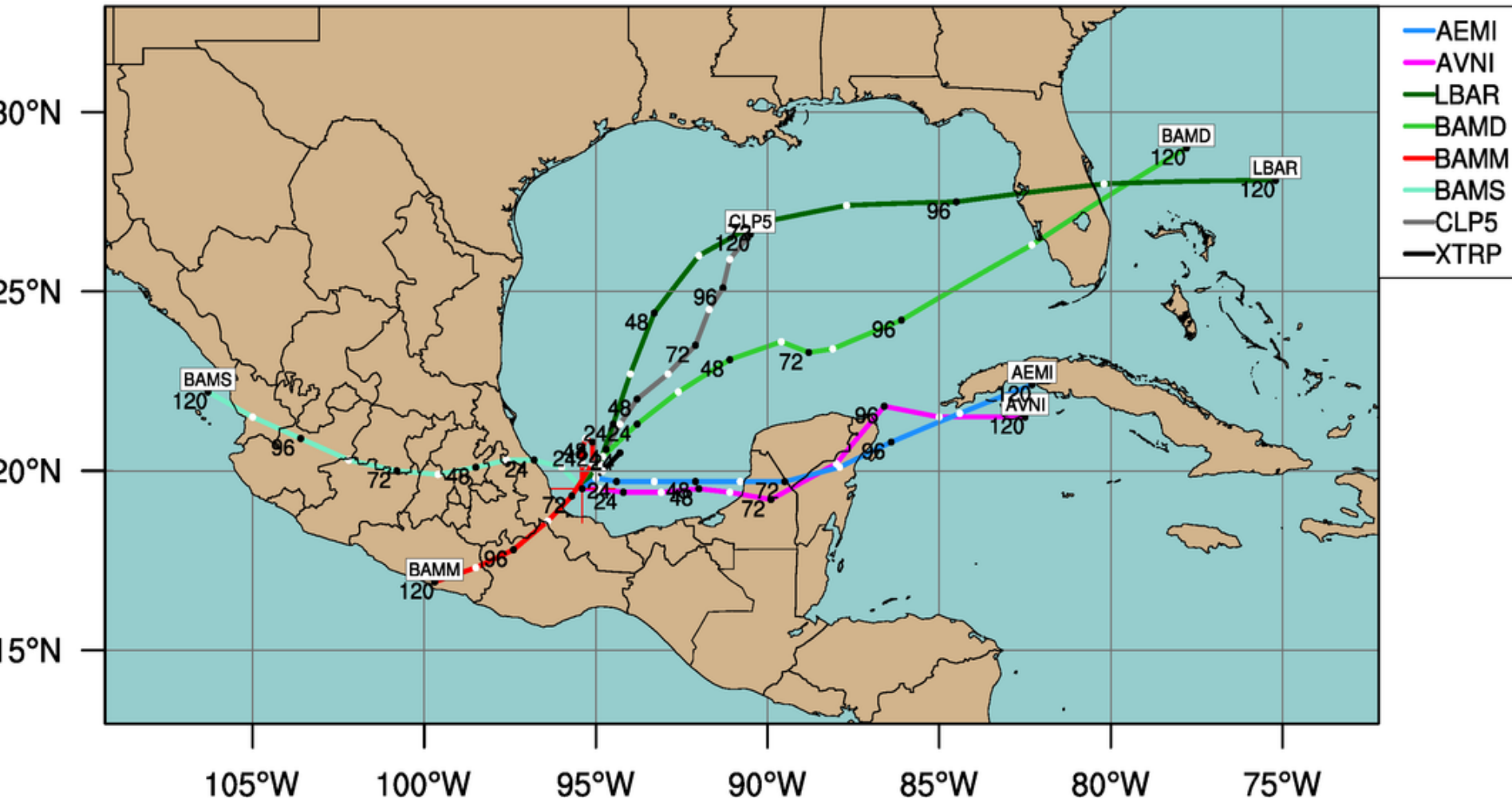


# LOW INVEST (AL93)

Early-cycle track guidance initialized at 1200 UTC, 20 October 2014

Current Intensity: 25 kt

Current Basin: North Atlantic



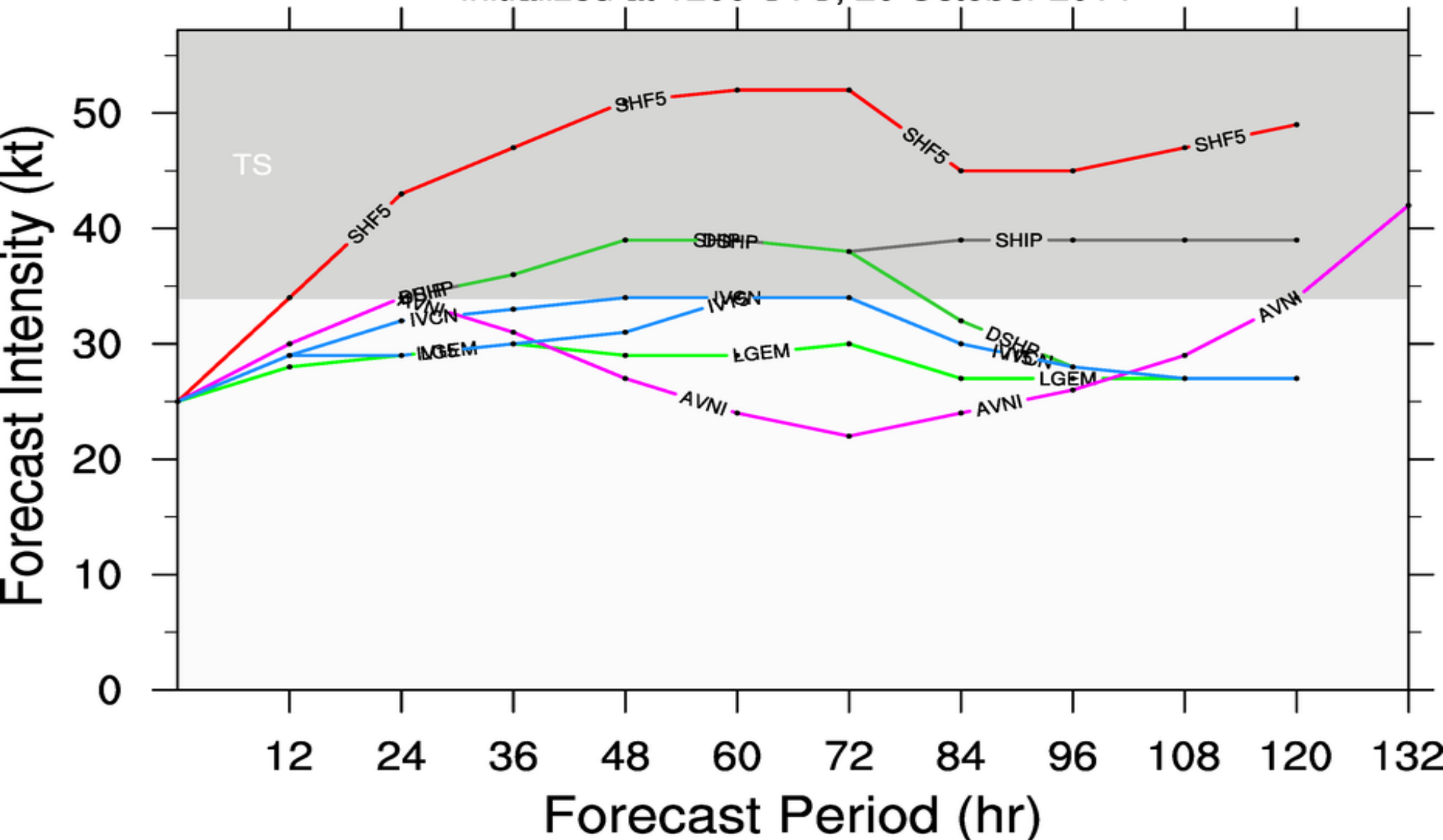
By using this plot, the user agrees to the UCAR Terms of Use  
which can be accessed at: <http://www2.ucar.edu/terms-of-use>

Plot generated at 1349 UTC 20 October 2014

# LOW INVEST (AL93)

## Early-cycle intensity guidance

initialized at 1200 UTC, 20 October 2014

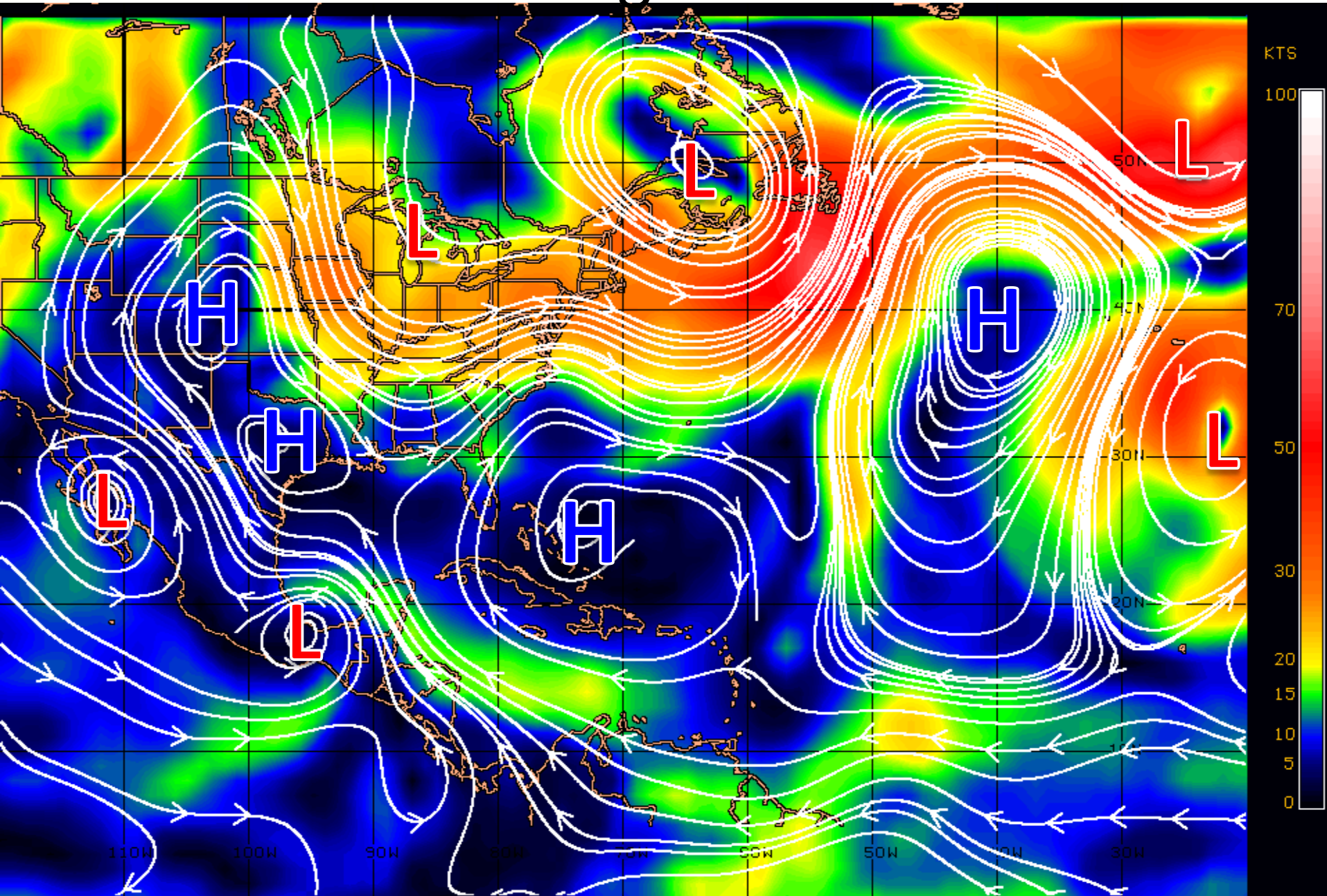


By using this plot, the user agrees to the UCAR Terms of Use which can be accessed at: <http://www2.ucar.edu/terms-of-use>

Plot generated at 1349 UTC 20 October 2014

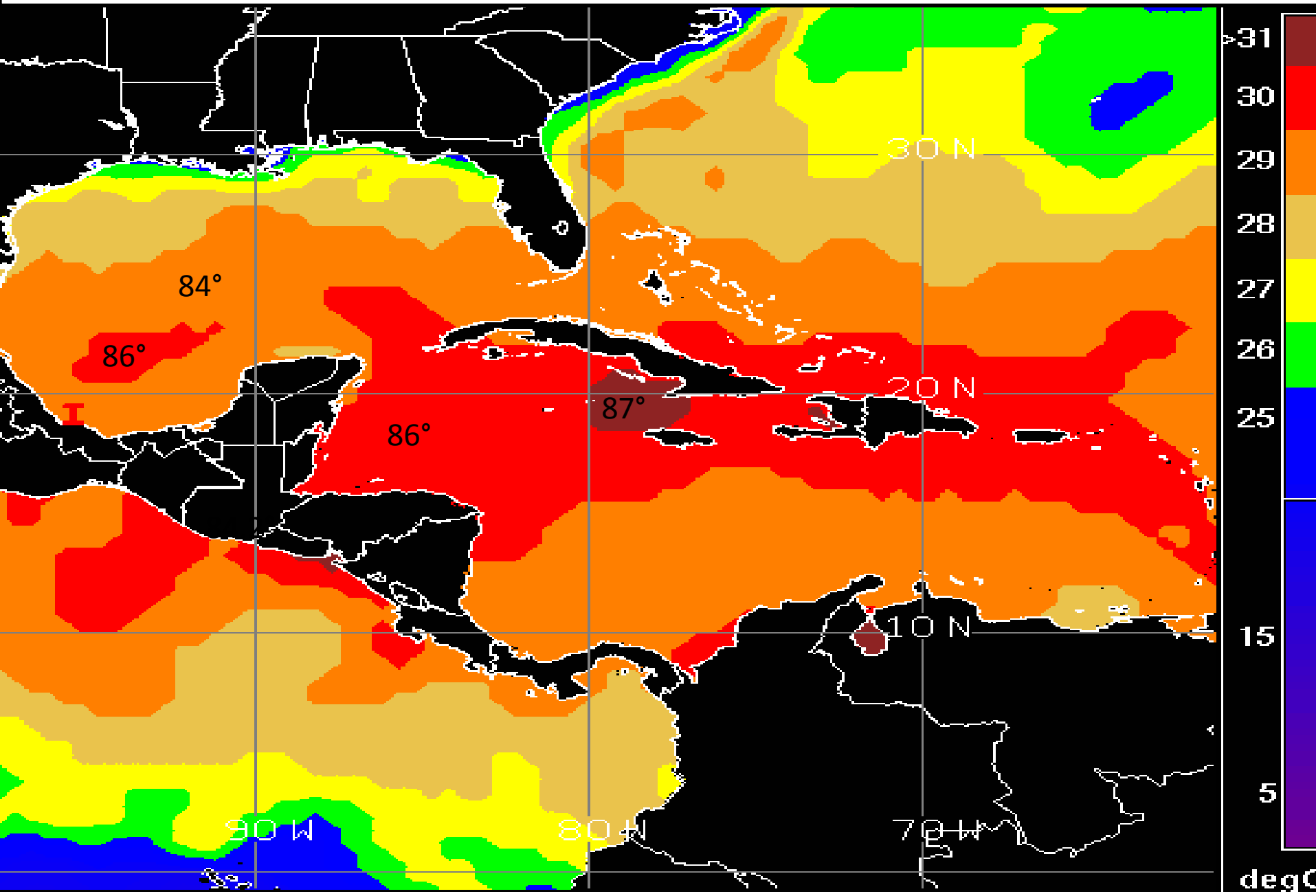


# Steering Currents

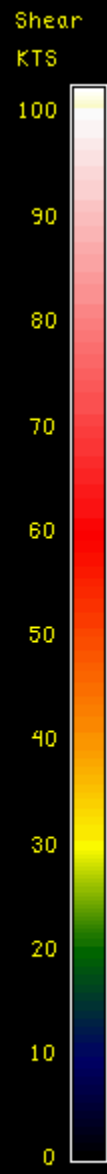
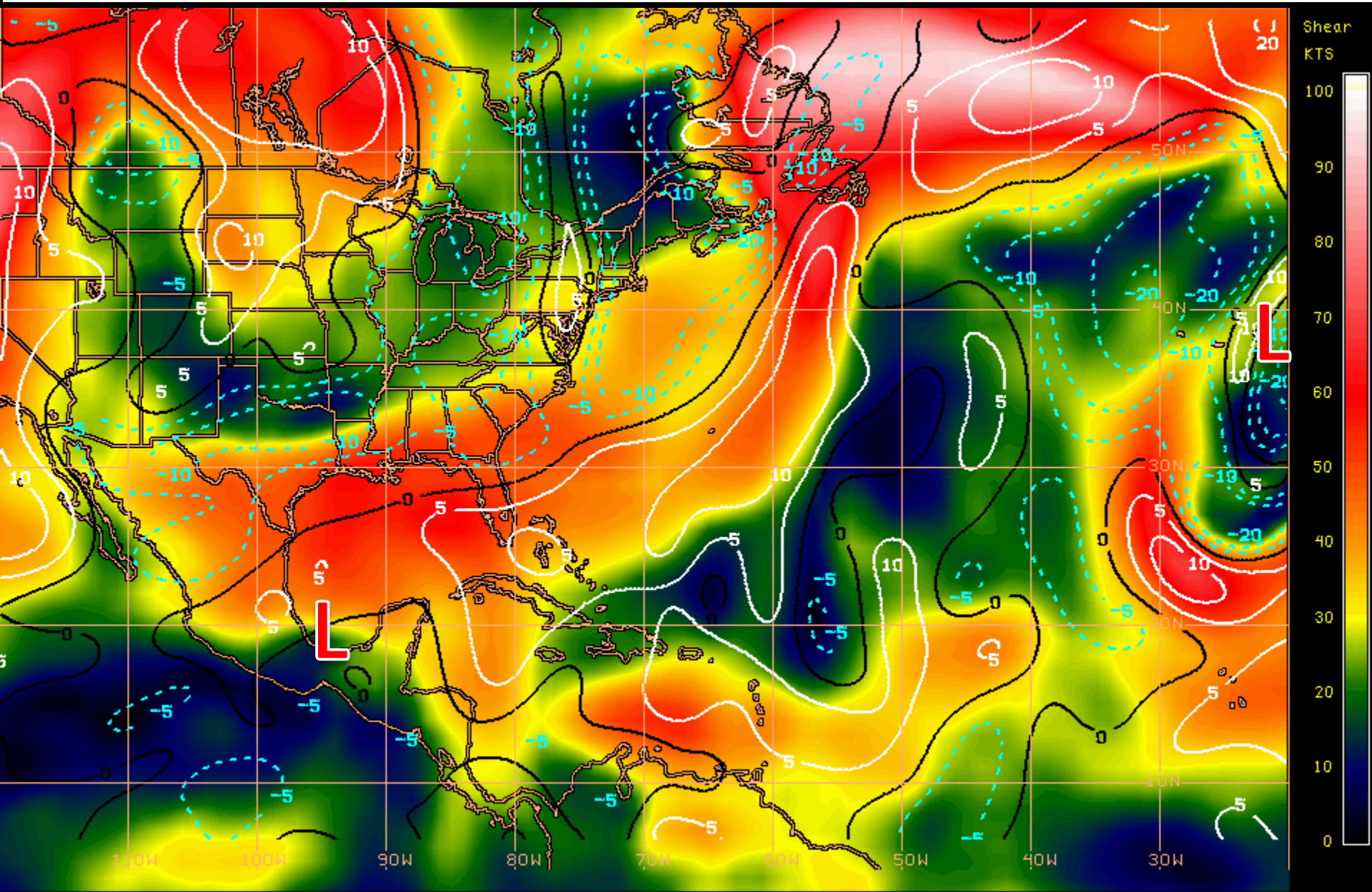




# Sea Surface Temperatures



# Current Wind Shear (shaded) and Shear Tendency (contours)

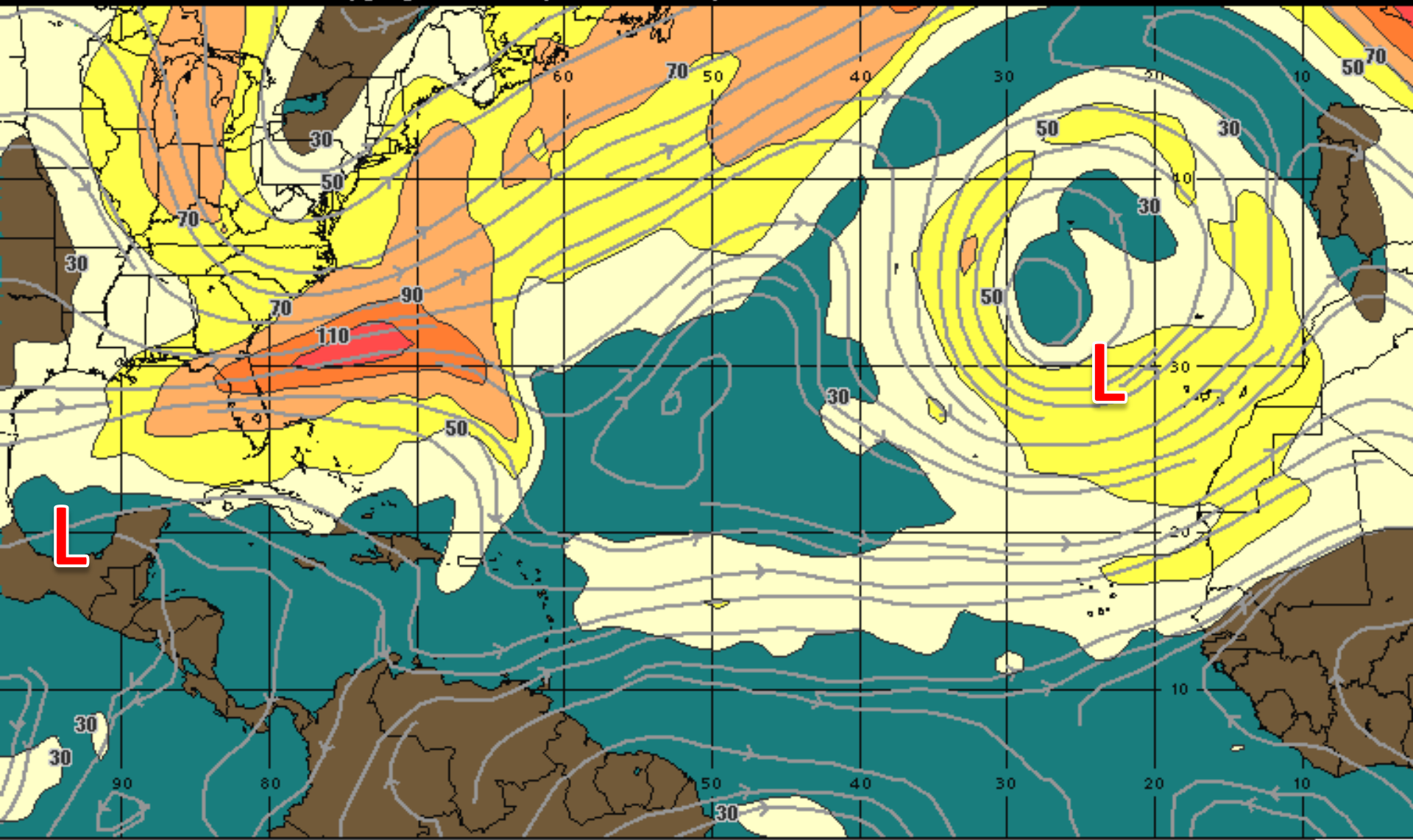


Shear Tendency (KTS) Over Past 24 Hours: Increasing — Decreasing - - - -



# Forecast Wind Shear-48 Hours (Wednesday)

00:00 22-OCT-2014 GMT ©Copyright WSI Corporation <http://www.wsi.com>



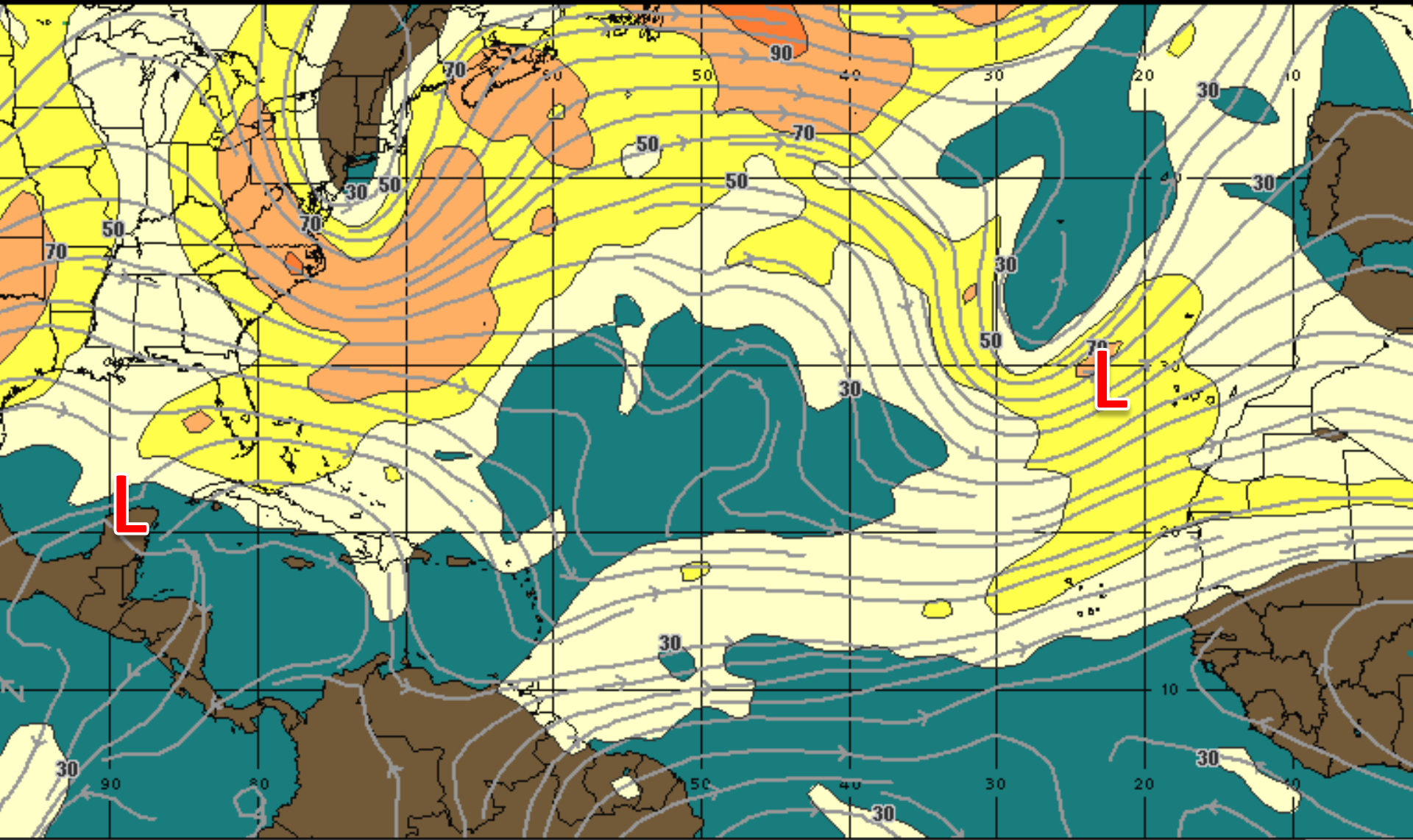
200Mb Wind Speed / Streamline Forecast  
Valid 0000 UTC Wed 22-Oct-14

30 mph 50 70 90 110 130 150 +

WSI

# Forecast Wind Shear-72 Hours (Thursday)

00:00 23-OCT-2014 GMT ©Copyright WSI Corporation <http://www.wsi.com>



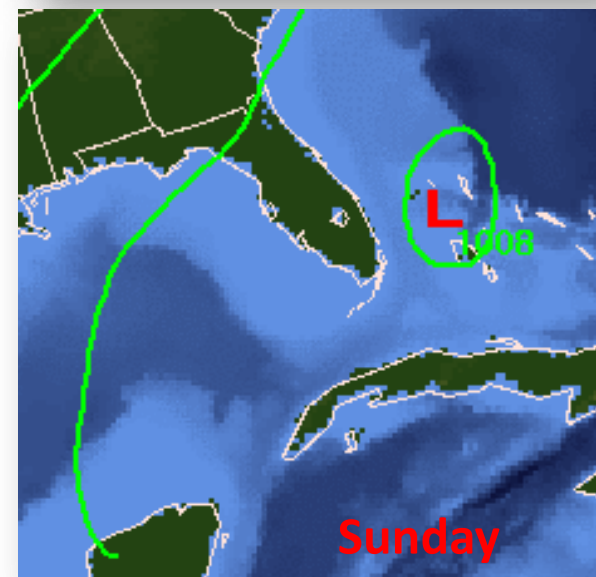
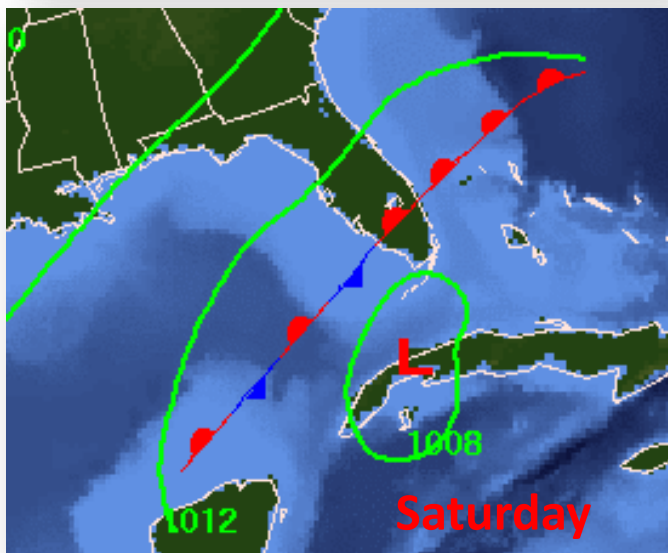
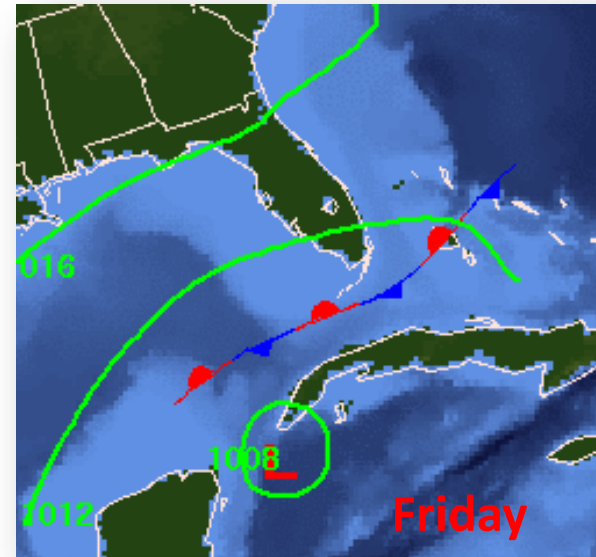
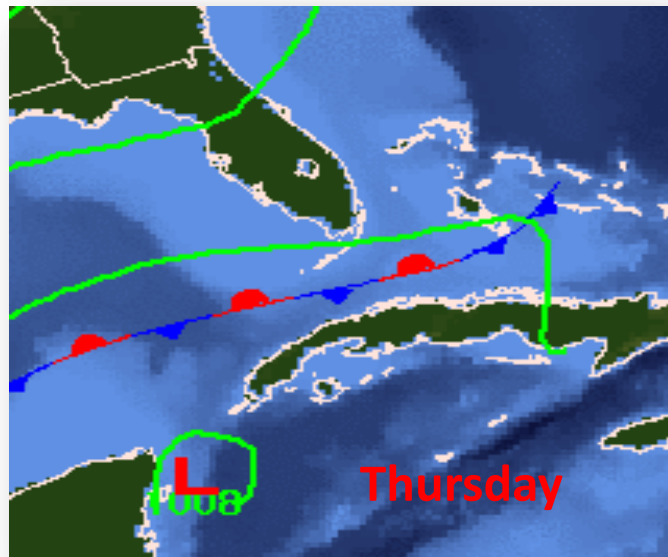
200Mb Wind Speed / Streamline Forecast  
Valid 0000 UTC Thu 23-Oct-14

30 mph 50 70 90 110 130 150 +

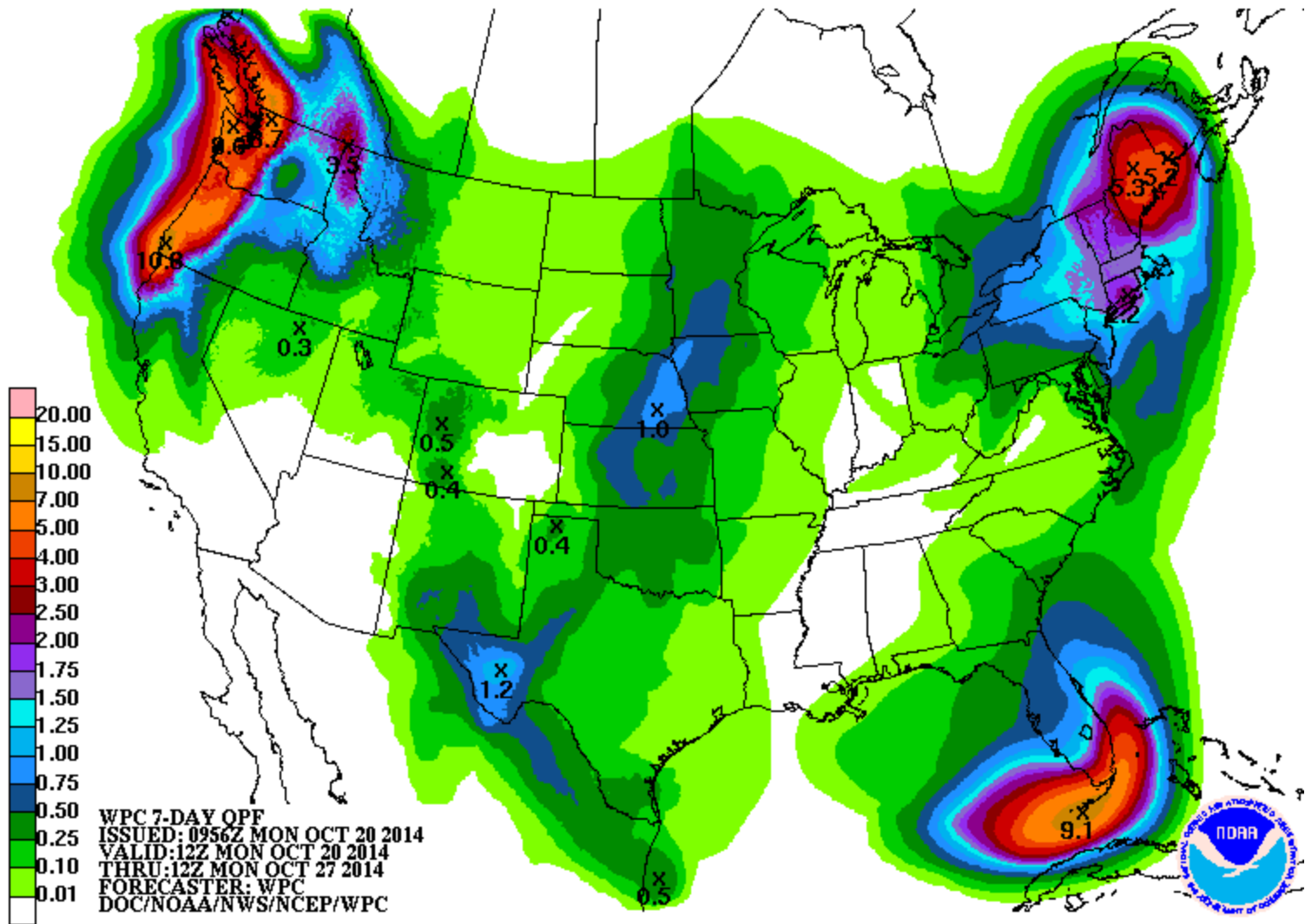
WSI®



# Surface Map Forecast



# 7 Day Rainfall Forecast





# Invest 92L

8 AM Mon Oct 20 2014

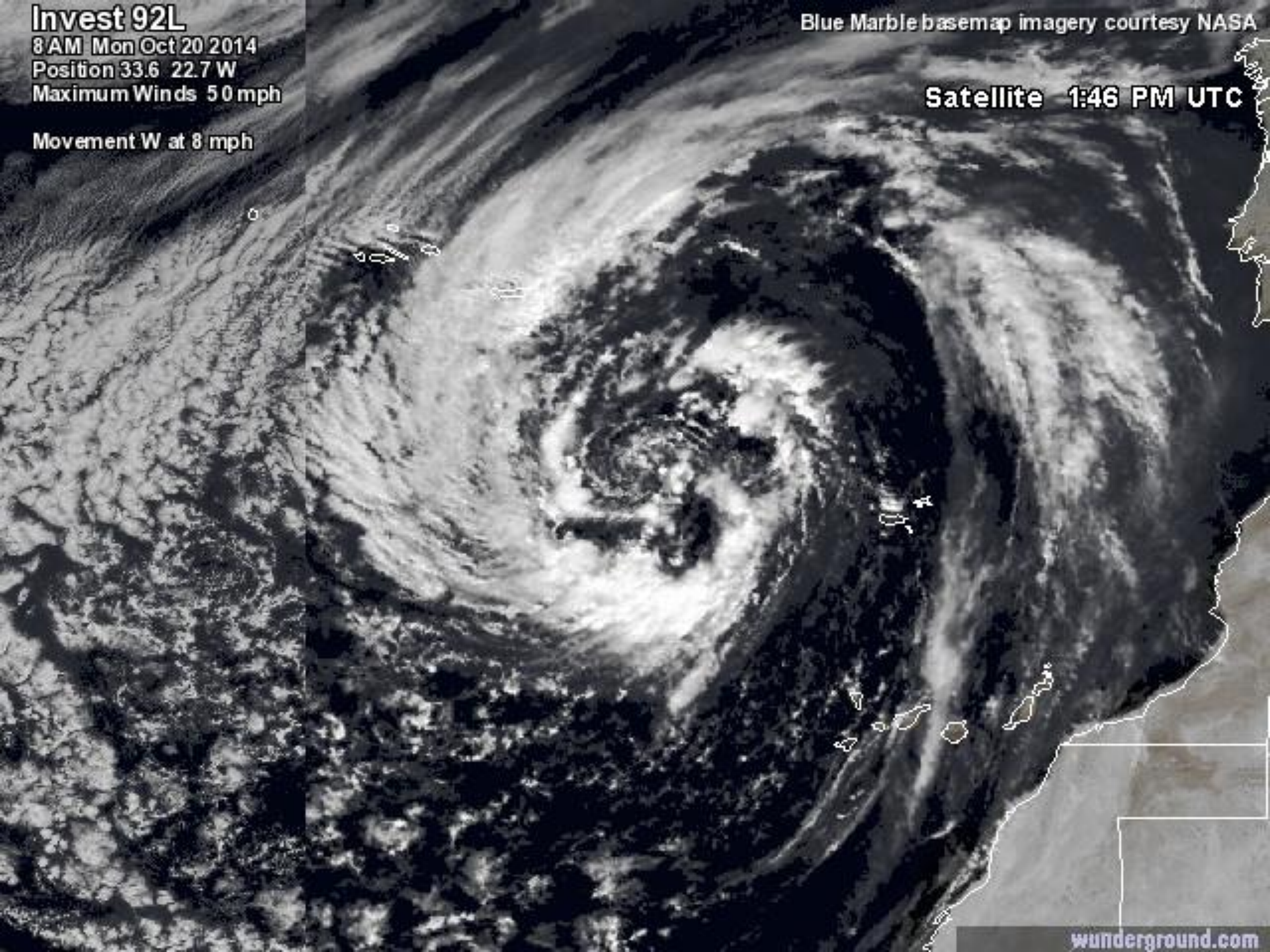
Position 33.6 22.7 W

Maximum Winds 50 mph

Movement W at 8 mph

Blue Marble basemap imagery courtesy NASA

Satellite 1:46 PM UTC



## Outlook:

### 92L:

- A non-tropical low pressure system, designated as invest 92L, in the far eastern Atlantic is producing strong winds of 50 mph.
- This system is now tracking over warmer waters and could gain tropical characteristics over the next few days as the system moves slowly westward.
- The NHC has placed this systems development chances at 30% in the next five days.

### 93L:

- An area of low pressure in the far southwestern Bay of Campeche continues to produce an area of disorganized showers and storms.
- This system is forecast to remain over warm waters and in an area of lower wind shear over the next couple of days and this could allow for some gradual development before wind shear increases out ahead of a front late this week.
- 93L is forecast to slowly move east over the next 48 hours, reaching the Yucatan Peninsula by mid-week and near the Yucatan Channel late Thursday and Friday as the system merges with a frontal boundary and pushes through the Florida Straits over the weekend.
- The NHC has placed this systems development chances at 40% over the next 5 days.
- Intensity models remain in disagreement, which is common when forecasting weak systems, and the more reliable models are keeping the system below tropical storm strength due to increasing wind shear and possible land interaction with Mexico.
- A Hurricane Hunter reconnaissance aircraft may investigate 93L tomorrow afternoon if conditions warrant.

### Florida Outlook:

- 92L is not forecast to impact Florida and will likely remain far out at sea.
- Regardless of the development or track of 93L, increased rainfall is forecast to fall across South Florida late this week as 93L will send tropical moisture northward into the southern Florida peninsula increasing rain chances (and the potential for isolated strong storms) late Tuesday through the weekend.
- Rainfall forecasts are currently placing up to 5 inches of rain across southern portions of the Florida Peninsula and up to 9 inches over the Florida Keys. This could create flooding issues and flash flooding in urban areas may result late this week.

\*Another briefing packet will be sent tomorrow morning unless development chances increase. For more information please visit the National Hurricane Center Webpage at [www.nhc.noaa.gov](http://www.nhc.noaa.gov)





# TROPICAL UPDATE

Created by:

Tiffany Hersey, Deputy State Meteorologist

[Tiffany.Hersey@em.myflorida.com](mailto:Tiffany.Hersey@em.myflorida.com)

State Meteorological Support Unit

Florida Division of Emergency

Management