



# Seasonal Influenza Report 2013-14

San Mateo County Health System, Public Health Policy and Planning  
Weeks 42 & 43 (Oct 13 to Oct 26, 2013)

[www.smchealth.org/flu](http://www.smchealth.org/flu) • Provider Reporting: 650.573.2346 • 650.573.2919 (fax)

Volume 6, Issue 2 (Issued November 4, 2013)

Karen Relucio MD, Assistant Health Officer • Deborah Van Olst, Epidemiologist • Scott Morrow MD, MPH, Health Officer

## Current Influenza Activity

### San Mateo County

- During week 43 (ending 10/26/13), San Mateo County reported minimal flu activity.
- Week 43 of the current season has a similar number of influenza detections as Week 43 of the previous season (Figures 1 and 2).
- Within the County, a total of 130 specimens have been tested for influenza since the beginning of flu season, only one of which tested positive for influenza. A total of 24 specimens have been tested for RSV since the beginning of the flu season, of which two (8.3%) were positive (Figures 1 and 3).
- Based on lab reports from reporting county and hospital laboratories\*, there was one influenza positive specimen and one RSV positive specimen during weeks 42 and 43.
- San Mateo County Public Health Lab (SMC PHL) has the ability to further subtype positive influenza A specimens. During weeks 42 and 43, no specimens tested positive for influenza, thus no subtyping was performed.
- Influenza-like-illness (ILI) surveillance of chief complaint data from San Mateo Medical Center ED is low and similar to activity for the same period last season (Figure 4).

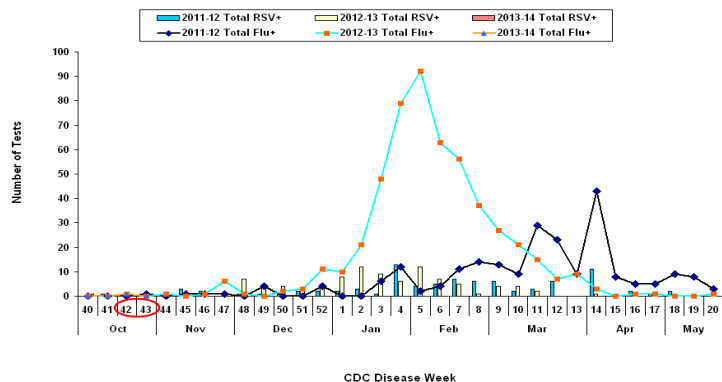
### California

- Influenza activity in California was reported as "sporadic" in week 43.
- Of 616 specimens tested, 14 (2.3%) were positive for influenza. Of the positive specimens, 14 (100.0%) were influenza A, of which two (14.3%) were H3 and five (35.7%) were H1. No specimens tested positive for influenza B.
- Outpatient visits for ILI decreased to 0.8% in week 43 from 1.0% in week 42.
- One influenza-associated death in an adult less than 65 years of age was reported during Week 43.

### United States

- During week 43 (October 20-26, 2013), influenza activity remained low in the United States.
- Of the 3,241 specimens tested, 145 (4.5%) were positive for influenza. Of the positive specimens, 135 (93.1%) were influenza A, of which seven (5.2%) were H3 and 28 (20.7%) were H1; and 10 (6.9%) were influenza B.
- No influenza-associated pediatric deaths were reported for current year during week 43.
- During week 43, 5.6% of all deaths reported through the 122-Cities Mortality Reporting System were due to P&I. This percentage was below the epidemic threshold of 6.3% for week 43.
- ILI activity in 47 states was reported as "minimal" during week 43. Three states (MS, TX, LA) reported "low" ILI activity.

Figure 1 Number of Positive Influenza & RSV Tests by Week  
San Mateo County, 2011-14



\*Our reported numbers do not represent all cases of influenza within SMC, but are intended to demonstrate trends in influenza activity. This issue does not represent data from Kaiser or Peninsula Hospital.  
Sources: SMC: San Mateo Medical Center, Sequoia Hospital, San Mateo County Public Health Lab; CA: California Influenza Surveillance Project: <http://www.cdph.ca.gov/programs/vrd/Pages/CaliforniaInfluenzaSurveillanceProject.aspx>; US: CDC Flu Activity and Surveillance: <http://www.cdc.gov/flu/weekly/fluactivity.htm>

Figure 2 Percentage of Positive Influenza Specimens Weighted by Number of Labs Reporting, San Mateo County, 2011-14

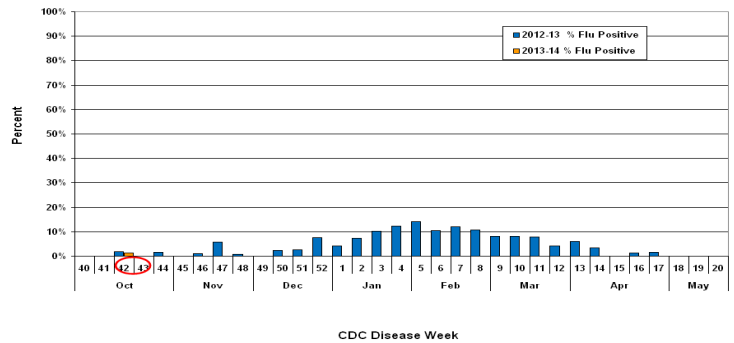


Figure 3 Percentage of Positive Respiratory Syncytial Virus (RSV) Specimens Weighted by Number of Labs Reporting, San Mateo County, 2011-14

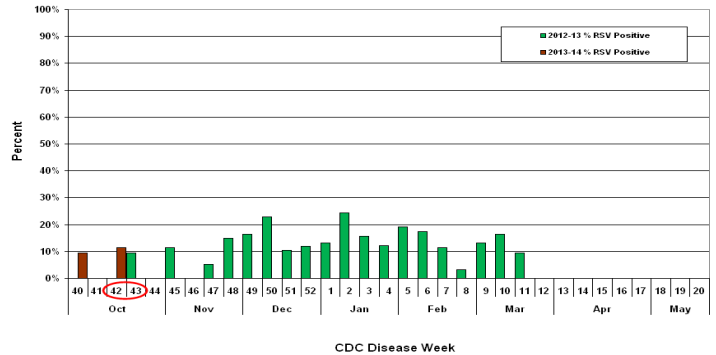
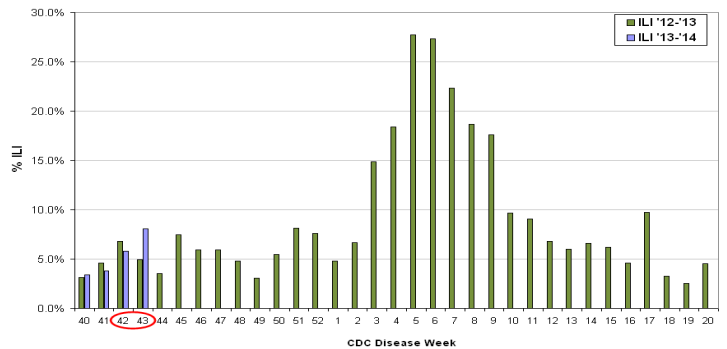


Figure 4 Proportion of Influenza-like Illness Visits (ILI):  
San Mateo County Medical Center ED, 2011-14 Influenza Seasons



## TEST OR TREAT?

Flu activity in San Mateo County is sporadic. One specimen during the last week tested positive for influenza.

- Test outpatients with suspected flu with high risk of complications, who are being considered for antiviral treatment. Empiric treatment in outpatients with ILI is not indicated at this time. Consider testing children < 2 years of age to rule out RSV vs. influenza.
- Test hospitalized patients with suspected flu. Consider empiric treatment in severely ill hospitalized (ICU) cases with suspected influenza.
- Antivirals used for treatment: Oseltamivir or Zanamivir.